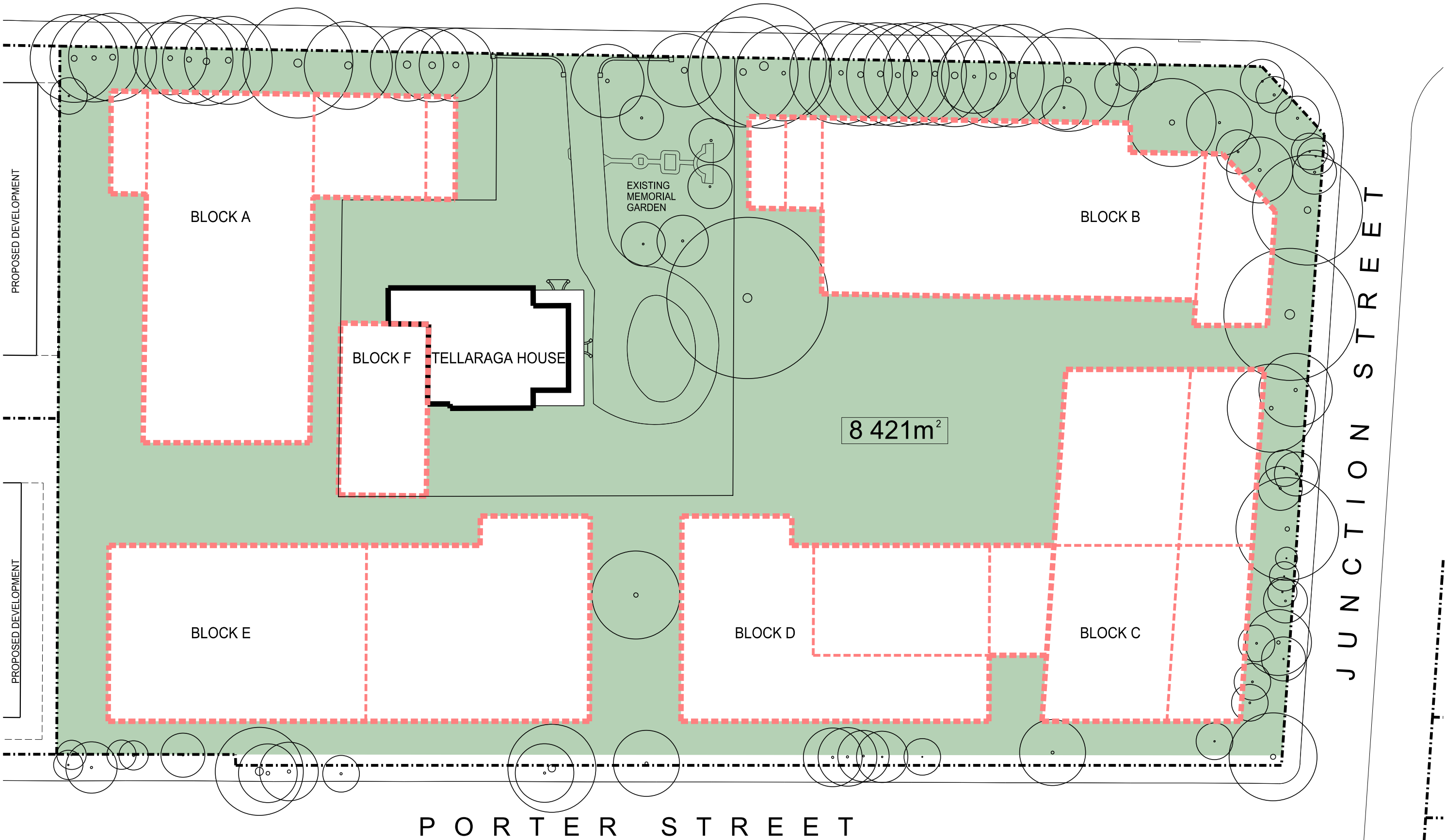


BELMORE STREET



Issue			
No.	Date	Description	Chkd
A	21/12/2011	Issue for Department of Planning	GN
B	19/03/2012		AD
C	03/04/2012	REVISED DPISSUE	AD

Any form of replication of this drawing in full or in part without the written permission of NBRS & Partners Pty Ltd constitutes an infringement of the copyright.
ABN 16 002 247 565 © 2011
Nominated Architects: Ridley Smith reg No.2268; Graham Thorburn reg No.5706
Geoffrey Deane reg No.3766; Andrew Duffin reg No.5602; Garry Hoddnett reg No.5286

- Notes
- BUILDING ENVELOPE
 - EXISTING BOUNDARY
 - POTENTIAL COMMUNAL OPEN SPACE
 - EXISTING TREE RETAINED

Drawing Title
POTENTIAL COMMUNAL
OPEN SPACE

Project & Client
Concept Plan for Crowle
Gardens Development
at
76 Belmore Street, Ryde NSW 2112
for
Achieve Australia

Architect
NBRS+PARTNERS
Level 3, 4 Glen Street, Milsons Point, NSW 2061 Australia
T: 61 2 9922 2344 F: 61 2 9922 1308
E: architects@nbsap.com.au W: www.nbsap.com.au
CAD File F:\09\09002\09002-mp\PlotSheets\09002-EA51.sht

Date 3/04/2012
Scale 1:500 @ A3
0 2.5 5 7.5 10 12.5 15m
Drawing Reference
09002-EA51-C