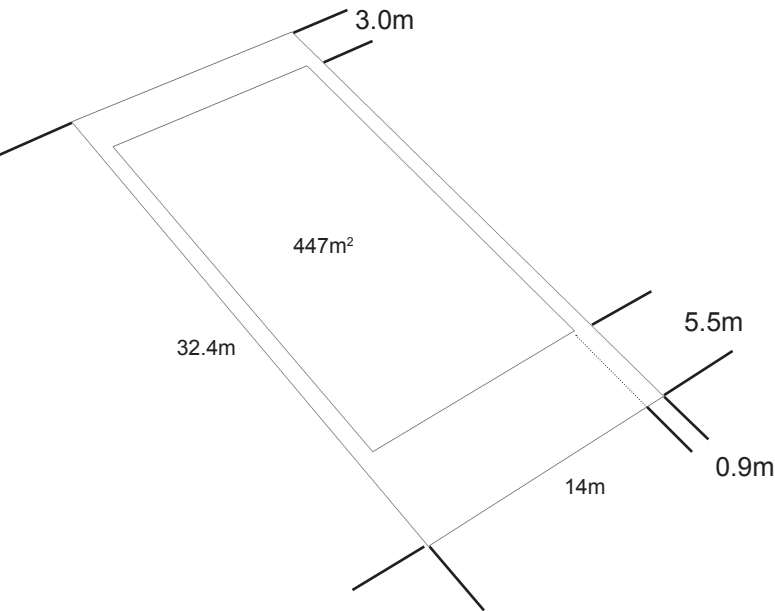
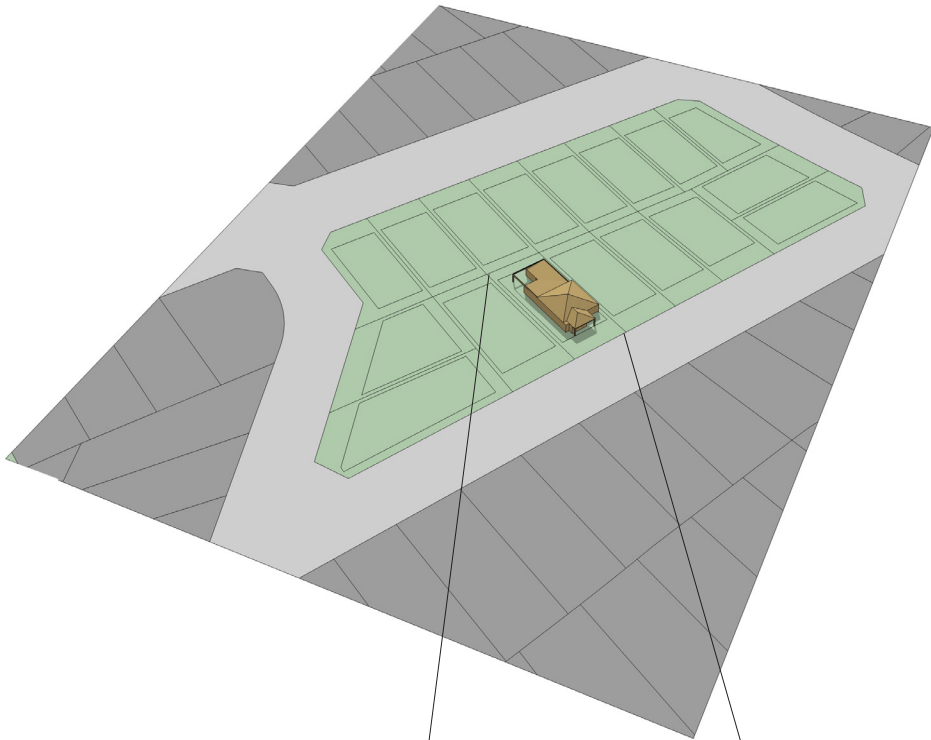
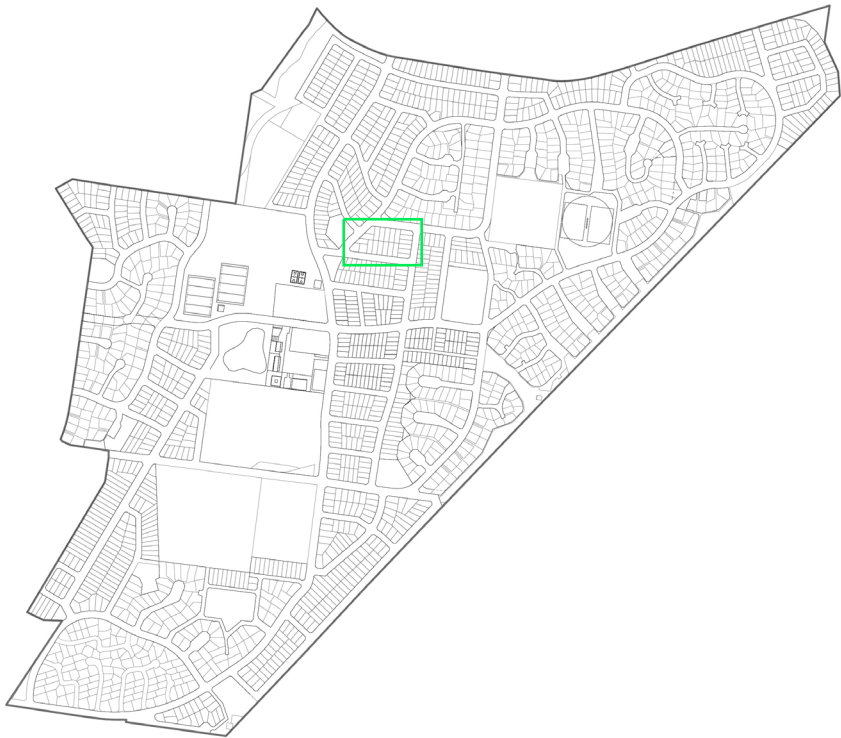


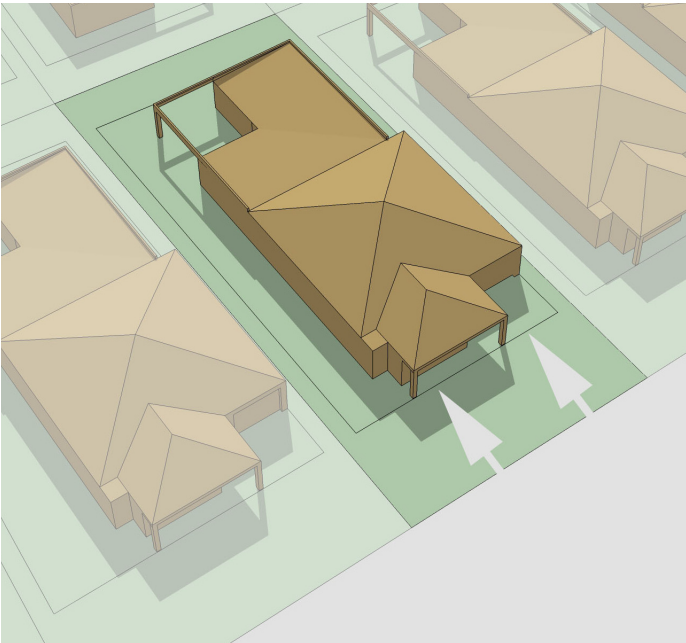
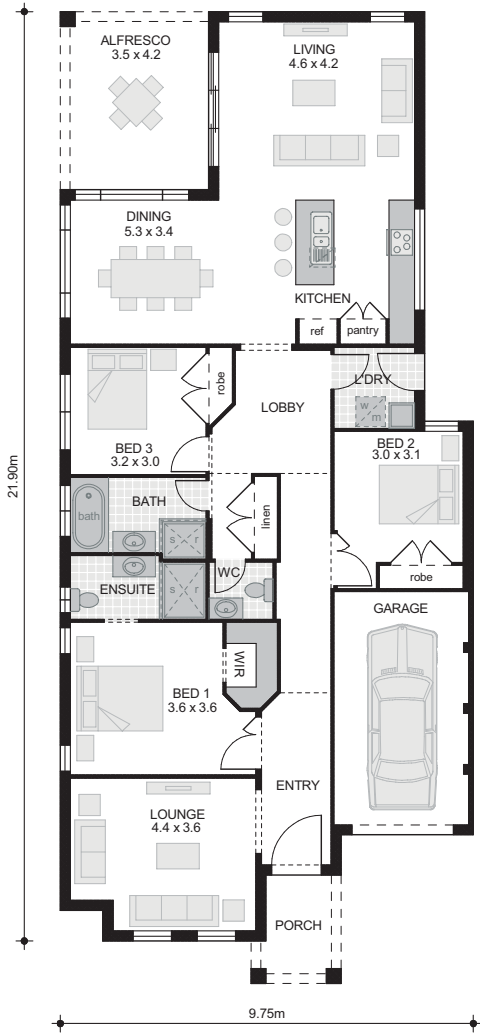


Type E

Eden Brea,
Housingtype Trenton implemented on lot size
between 400-449m²

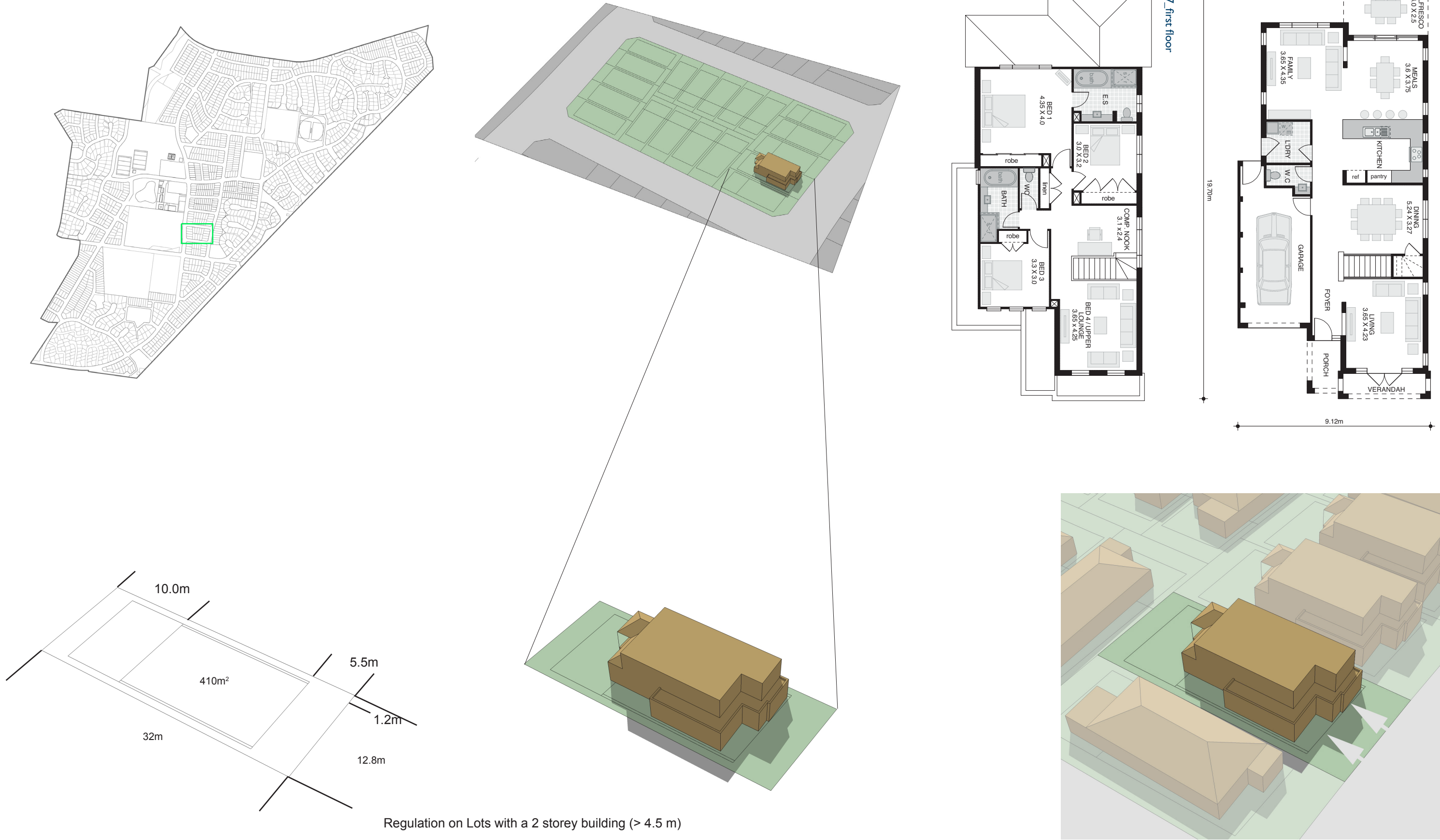


Regulation on Lots with a 1 storey building (< 4.5 m)



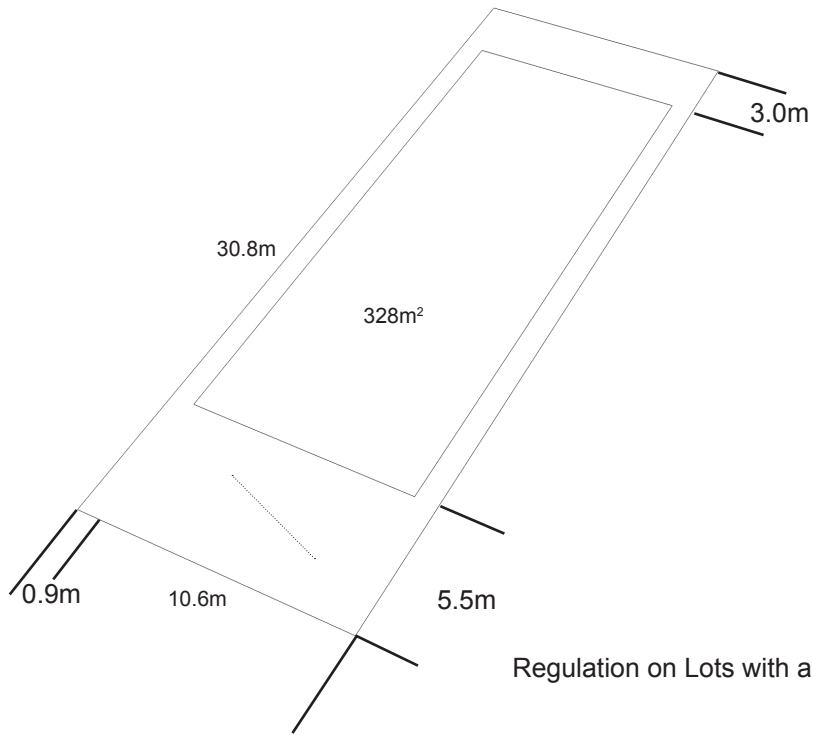
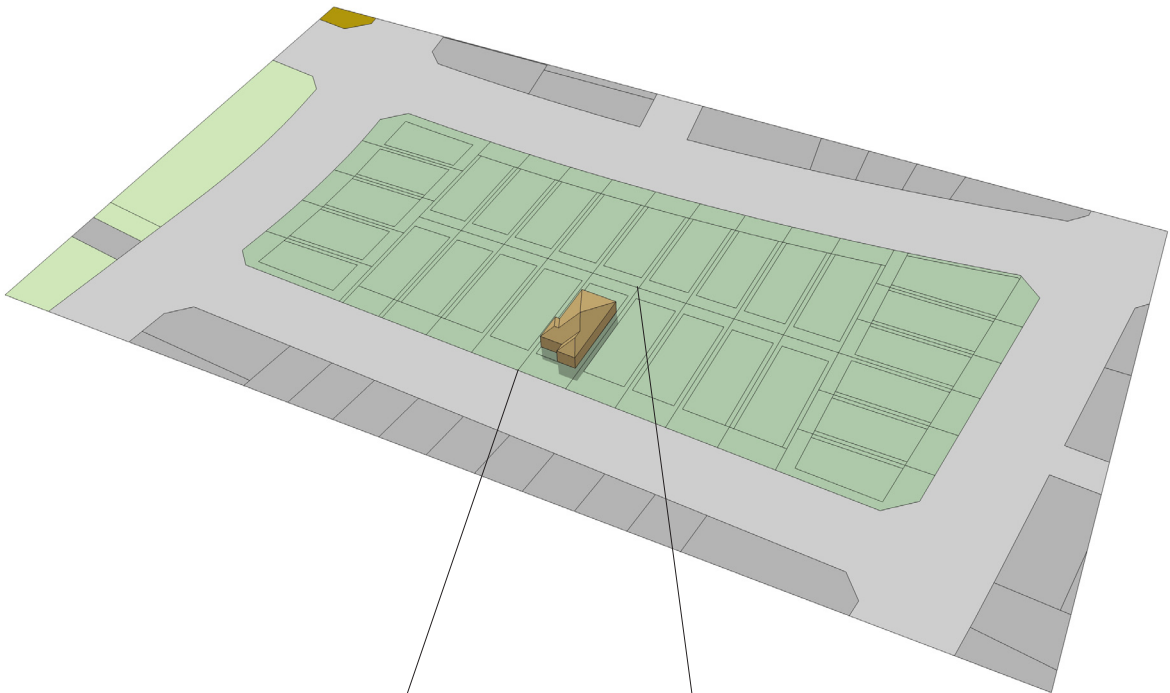
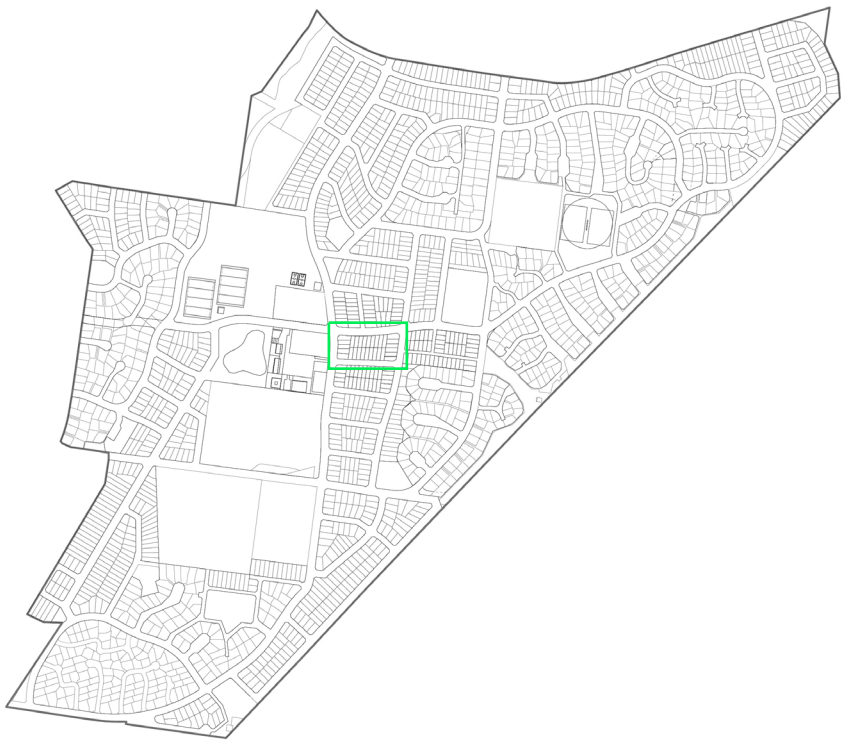
Type F

Eden Brea,
Housingtype Portsea 27 implemented on lot width
between 11.7m - 13.3m

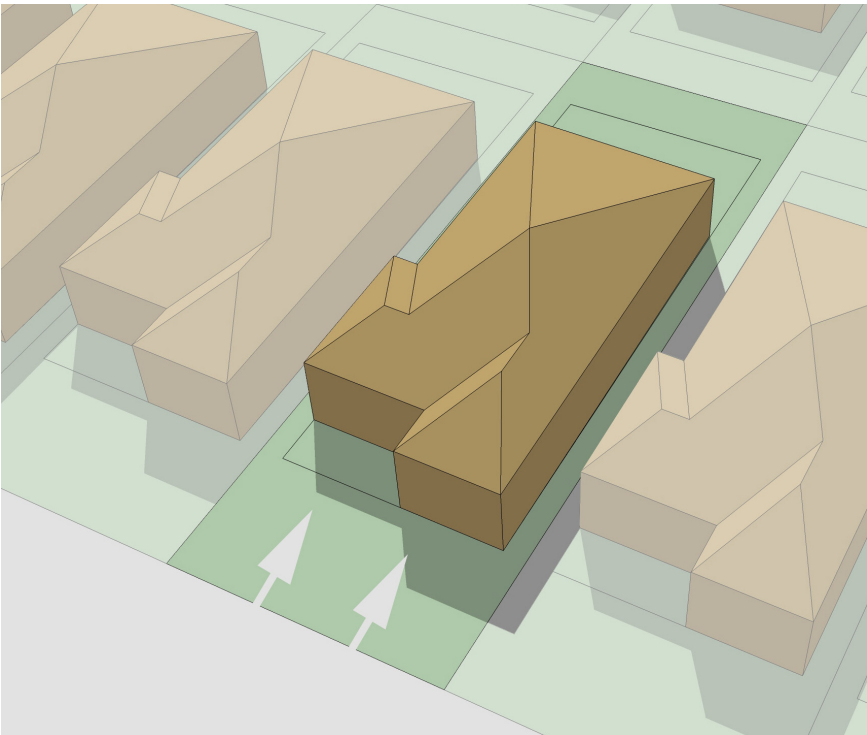
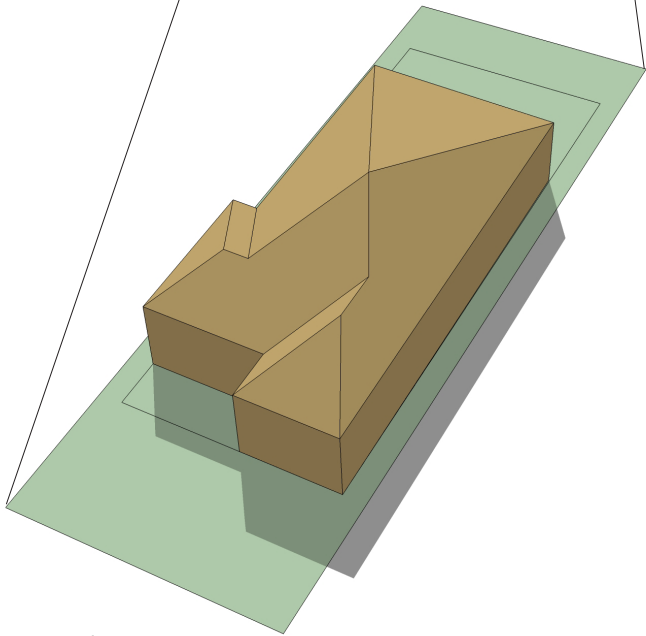


Type G

Masterton,
Housingtype Chiffley 27 implemented on small lot size
between 300-349m²

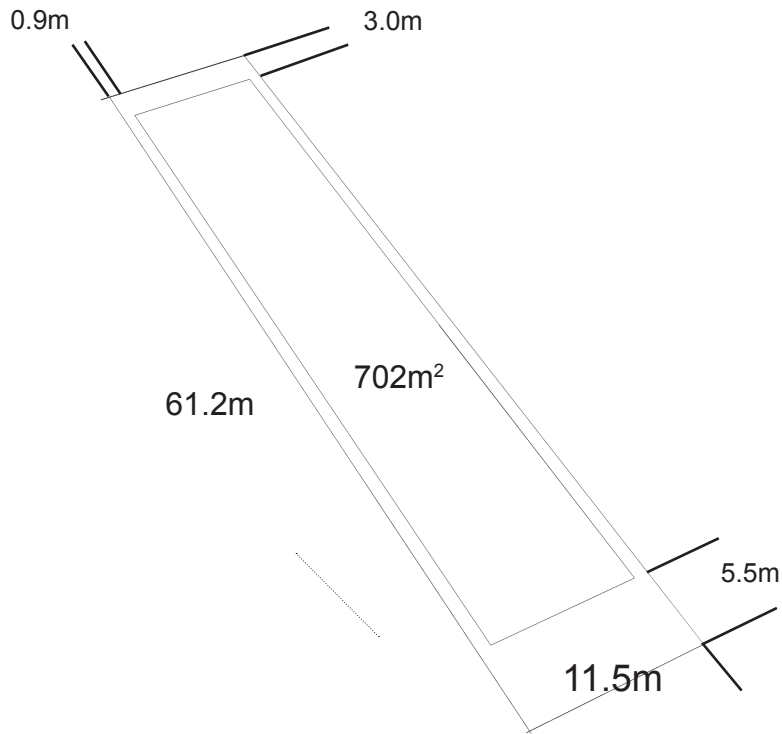
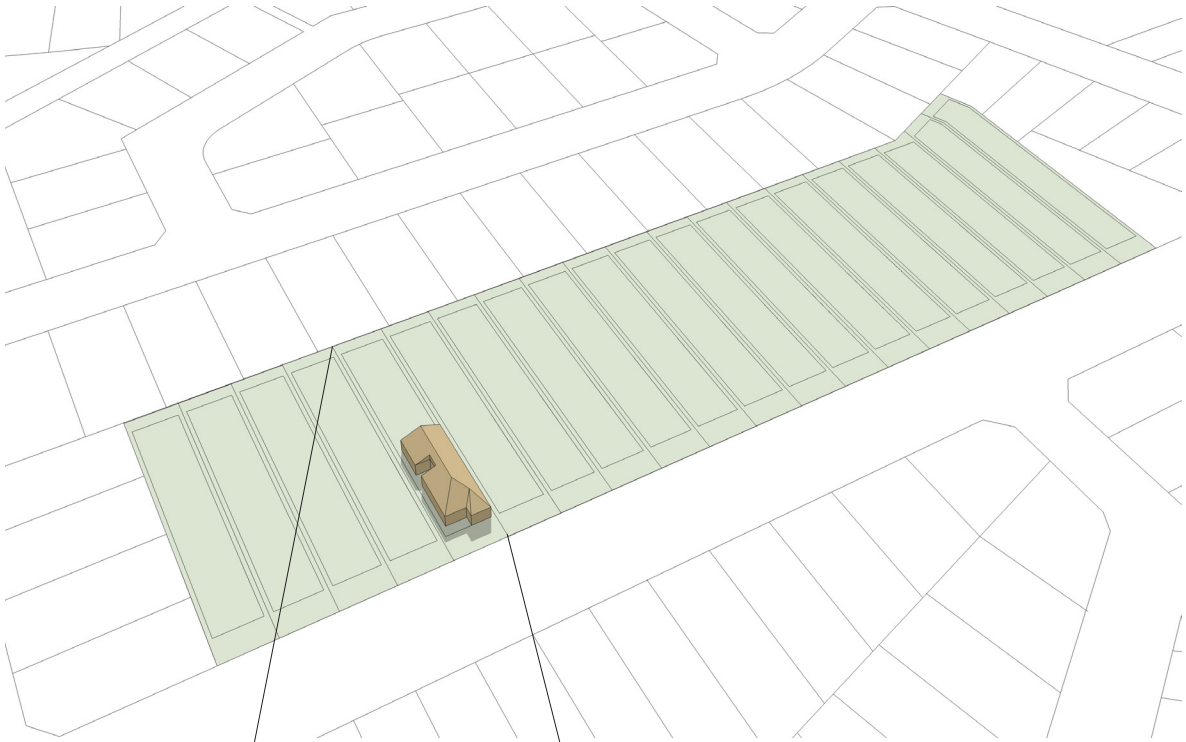


Regulation on Lots with a 2 storey building (> 4.5 m)

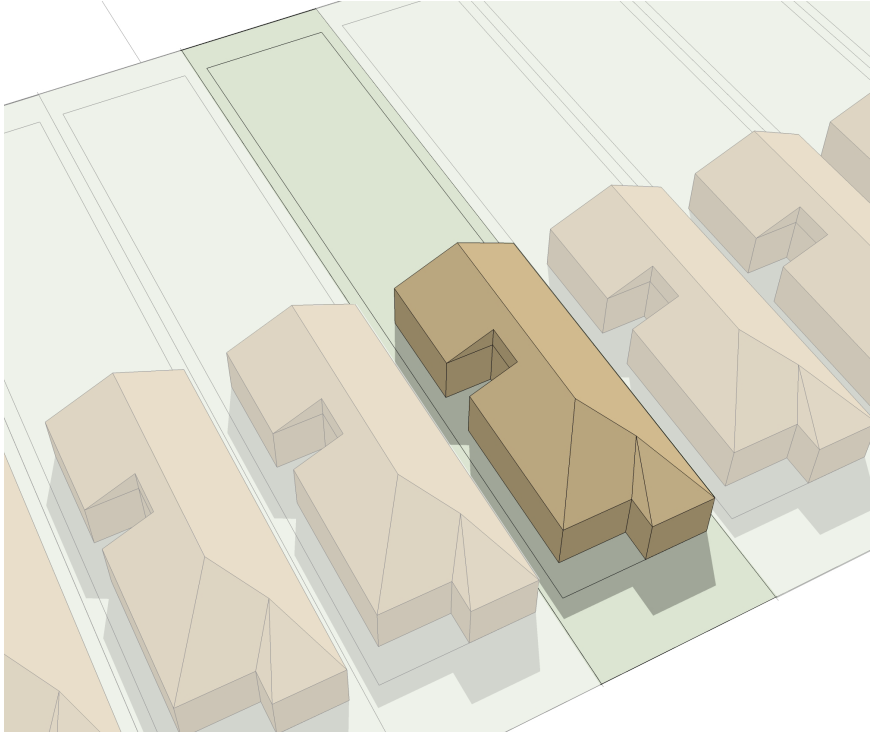
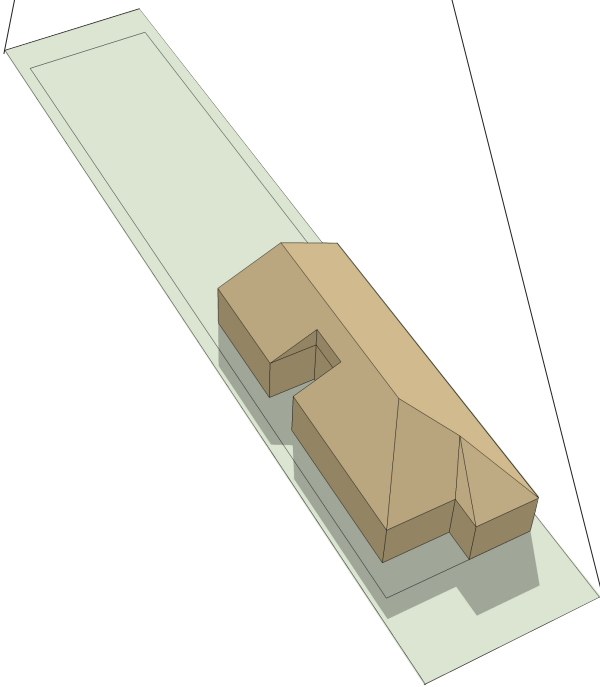


Study on Deep and Narrow Lots

Masterton,
Example Housingtype Armstrong
Lotsize 700m²



Regulation on Lots with a 1 storey building (< 4.5 m)



street-tree planting according to the scale of the street
emphazing the hierarchical pattern

front setback = 4,5 m.
setback for garage = 1 m behind front facade

different housing-types next to
eachother with a diverse lot-width.

maximum 2 storeys high

front fencing according to
JMD Design

side setback up to
4,5 m = 0,9 m

side setback higher then
4,5 m = 1,2 m



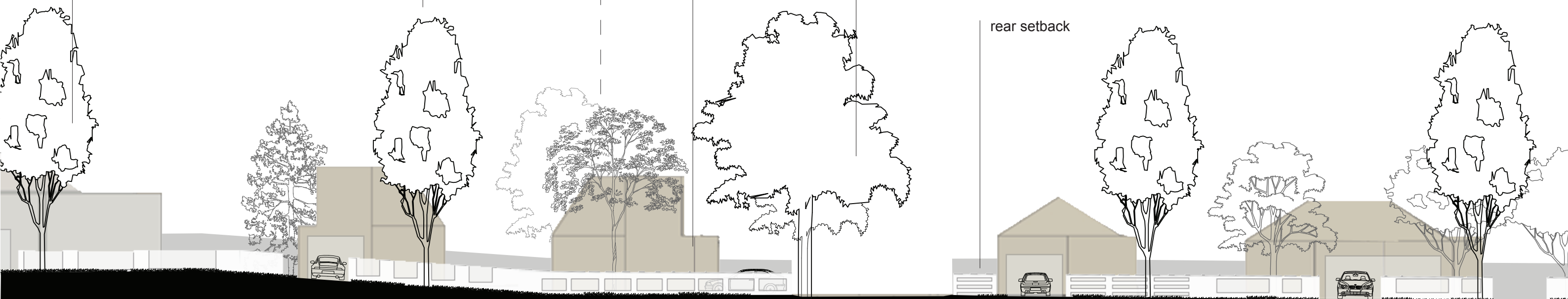
street-tree planting according to the scale of the street
emphazing the hierarchical pattern

adequate space between
upper levels

addressing the corner

landmark planting to
introduce side-street

rear setback





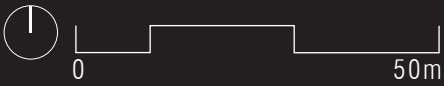
Housing - Solar Acces - 21st of June at 9:00
Airds Bradbury

urbis



Housing - Solar Acces - 21st of June at 12:00
Airds Bradbury





Housing - Solar Acces - 21st of June at 15:00
Airds Bradbury



