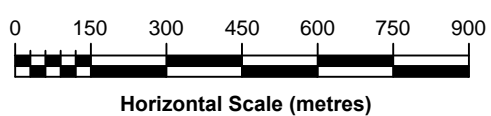


LEGEND	
---	APPROXIMATE SITE BOUNDARY
---	AREA OF SITE FOR PROPOSED URBAN OR COMMERCIAL DEVELOPMENT
▨	POSSIBLE ADDITIONAL EXTENT OF UNIT 5A
0-18	INFERRED TOTAL THICKNESS OF UNIT 5A (m) BASED ON CURRENT SUBSURFACE DATA
▲	APPROXIMATE LOCATIONS OF PIEZOCONES (CURRENT COFFEY INVESTIGATION)
⊕	APPROXIMATE LOCATIONS OF MONITORING WELLS (CURRENT COFFEY INVESTIGATION)
⊕	APPROXIMATE LOCATIONS OF BOREHOLES (CURRENT COFFEY INVESTIGATION)
⊕	APPROXIMATE LOCATIONS OF TEST PITS (CURRENT COFFEY INVESTIGATION)
▲	APPROXIMATE LOCATIONS OF PIEZOCONES (DOUGLAS PARTNERS INVESTIGATIONS, 2006 AND 2007)
⊕	APPROXIMATE LOCATIONS OF TEST PITS (DOUGLAS PARTNERS INVESTIGATIONS, 2006 AND 2007)
⊕	APPROXIMATE LOCATIONS OF TEST PITS AND PIEZOCONES (DOUGLAS PARTNERS INVESTIGATIONS, 2006 AND 2007)
+	APPROXIMATE LOCATIONS OF WATER SAMPLES (DOUGLAS PARTNERS INVESTIGATIONS, 2006 AND 2007)

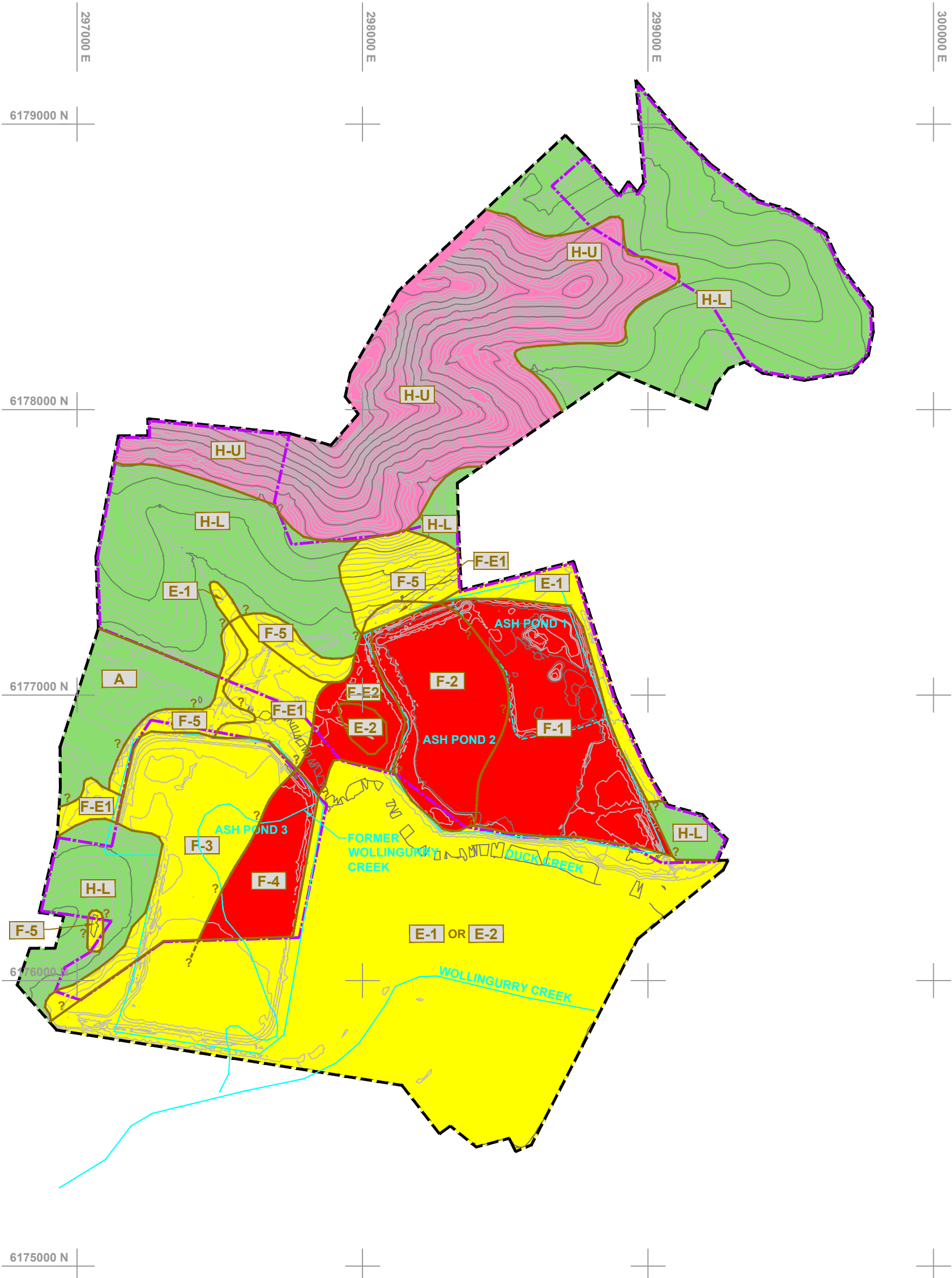
**NOTE:** THE BACKGROUND CONTOURS SHOWN IN THIS DRAWING ARE INTERPOLATED CONTOURS BETWEEN A LIMITED NUMBER OF TEST LOCATIONS WHERE THE DEPTH/THICKNESS OF THE RELEVANT UNIT IS KNOWN AND HAS BEEN DONE TO PROVIDE A PRELIMINARY THREE DIMENSIONAL PICTURE OF THE RELEVANT GEOLOGICAL UNIT DEPTH OR THICKNESS. THE GROUND CONDITIONS ARE ONLY ACCURATE AT THE TEST LOCATIONS SHOWN IN THE FIGURE. THOSE READING AND USING THIS DRAWING SHOULD NOTE THAT THE CONTOUR DATA HAS BEEN PRESENTED TO PROVIDE A BROAD INDICATION OF GROUND CONDITIONS FOR CONCEPT MASTER PLANNING PURPOSES. THE CONTOUR DATA IN THIS DRAWING SHOULD NOT BE USED FOR DETAILED DESIGN PURPOSES. DUE TO THE INHERENT VARIABILITY OF NATURAL GROUND CONDITIONS AND THE SIGNIFICANT 'MAN MADE' DISTURBANCE AT THIS SITE, SOME VARIABILITY BETWEEN THE INTERPOLATED CONTOUR DATA SHOWN HERE AND ACTUAL GROUND CONDITIONS MAY OCCUR. FURTHER ADVICE ON POSSIBLE FUTURE SUBSURFACE INVESTIGATION WORKS SHOULD BE SOUGHT FROM COFFEY IF DETAILED PLANNING OR DESIGN WORK IS TO BE CARRIED OUT FOR FUTURE DEVELOPMENT AT THIS SITE'



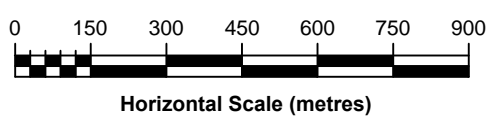
drawn	CCQ / LT
approved	SRM / JPT
date	19/08/10
scale	1:15 000
original size	A3



client:	TRUENERGY
project:	GEOTECHNICAL, CONTAMINATION AND GROUNDWATER INVESTIGATION TALLAWARRA LANDS, YALLAH, NSW
title:	INFERRED SOFT SOIL THICKNESS CONTOURS
project no:	ENVIWOLL00250AB-R05
figure no:	FIGURE 9



**FOR LEGEND AND NOTES SEE FIGURE 10B**



drawn	SRM / LT
approved	JPT
date	19/08/10
scale	1:15 000
original size	A3

**coffey**  
environments  
SPECIALISTS IN ENVIRONMENTAL,  
SOCIAL AND SAFETY PERFORMANCE

client:	TRUENERGY	
project:	GEOTECHNICAL, CONTAMINATION AND GROUNDWATER INVESTIGATION TALLAWARRA LANDS, YALLAH, NSW	
title:	GEOTECHNICAL TERRAIN UNITS WITH GEOTECHNICAL CONSTRAINTS BASED ON SIMPLE QUALITATIVE RATING SYSTEM	
project no:	ENVIWOLL00250AB-R05	figure no: FIGURE 10A

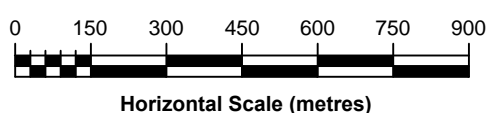
LEGEND	
---	APPROXIMATE SITE BOUNDARY
---	AREA OF SITE FOR PROPOSED URBAN OR COMMERCIAL DEVELOPMENT
GEOTECHNICAL CONSTRAINTS:	
	GENERALLY NO SIGNIFICANT GEOTECHNICAL CONSTRAINTS TO URBAN DEVELOPMENT WITHIN THESE AREAS. FURTHER GEOTECHNICAL ASSESSMENT WORKS REQUIRED DURING PLANNING AND DETAILED DESIGN STAGES FOR FUTURE DEVELOPMENT.
	LAND REQUIRING SOME GEOTECHNICAL ENGINEERING ASSESSMENT TO DESIGN AND CONSTRUCT STANDARD URBAN DEVELOPMENTS SUCH AS RESIDENTIAL SUBDIVISIONS. MORE LIMITED GROUND TREATMENT NECESSARY COMPARED TO 'RED' AREAS BELOW. DEVELOPMENT POSSIBLE BUT WOULD REQUIRE INPUT FROM THE GEOTECHNICAL ENGINEER.
	MODERATE RISK (WITH SOME HIGH RISK) OF LANDSLIDE IN THESE AREAS. FURTHER DETAILED GEOTECHNICAL ASSESSMENT WORKS WOULD BE NECESSARY TO FURTHER REFINE AREAS SUITABLE FOR DEVELOPMENT. SOME OF THIS LAND MAY BE EXCLUDED FROM FUTURE DEVELOPMENT.
	LAND REQUIRING SIGNIFICANT GEOTECHNICAL ASSESSMENT TO DESIGN AND CONSTRUCT TO URBAN DEVELOPMENT STANDARD. DEVELOPMENT COULD BE POSSIBLE BUT WOULD LIKELY REQUIRE SIGNIFICANT GEOTECHNICAL REMEDIAL WORKS. DETAILED GEOTECHNICAL ADVICE DURING THE PLANNING AND DESIGN STAGES WOULD BE REQUIRED.

**NOTES:**

1. THE HIGH PRESSURE GAS PIPELINE CONNECTING THE EASTERN GAS PIPELINE TO THE POWER PLANT PASSES BENEATH H-L, E-1 AND F-5 TERRAIN UNITS.

2. THE TERRAIN UNITS SHOWN IN THIS DRAWING ARE BASED ON AVAILABLE SUBSURFACE DATA, INTERPOLATED CONTOURS OF VARIOUS GROUND CONDITIONS BETWEEN A LIMITED NUMBER OF TEST LOCATIONS, AERIAL PHOTOGRAPHS, SURVEY MAPS, TOPOGRAPHIC MAPS, ACID SULPHATE SOIL RISK MAPS AND SITE OBSERVATIONS. THE GROUND CONDITIONS WITHIN EACH TERRAIN UNIT ARE ONLY ACCURATE AT THE TEST LOCATIONS SHOWN IN OTHER FIGURES. THOSE READING AND USING THIS DRAWING SHOULD NOTE THAT THE TERRAIN UNITS HAVE BEEN PRESENTED TO PROVIDE A BROAD INDICATION OF GROUND CONDITIONS FOR CONCEPT MASTER PLANNING PURPOSES. THE TERRAIN UNITS SHOWN IN THIS DRAWING SHOULD NOT BE USED FOR DETAILED DESIGN PURPOSES. DUE TO THE INHERENT VARIABILITY OF NATURAL GROUND CONDITIONS AND THE SIGNIFICANT 'MAN MADE' DISTURBANCE AT THIS SITE, SOME VARIABILITY BETWEEN THE BOUNDARIES OF TERRAIN UNITS MAY OCCUR. THESE TERRAIN UNITS SHOULD BE UPDATED BASED ON FUTURE INVESTIGATION WORKS AT THIS SITE. FURTHER ADVICE ON POSSIBLE FUTURE SUBSURFACE INVESTIGATION WORKS SHOULD BE SOUGHT FROM COFFEY IF DETAILED PLANNING OR DESIGN WORK IS TO BE CARRIED OUT FOR FUTURE DEVELOPMENT AT THIS SITE BASED ON THESE TERRAIN UNITS. THE EXTENT OF SUCH INVESTIGATION WORKS WILL BE GREATER IN AREAS WHERE DEVELOPMENT IS PROPOSED OVER AREAS SHOWN AS 'FILLED AND MANMADE GROUND WITH SIGNIFICANT GROUND DISTURBANCE' DUE TO THE INHERENT UNCERTAINTY OF GROUND CONDITIONS WITHIN THESE AREAS.

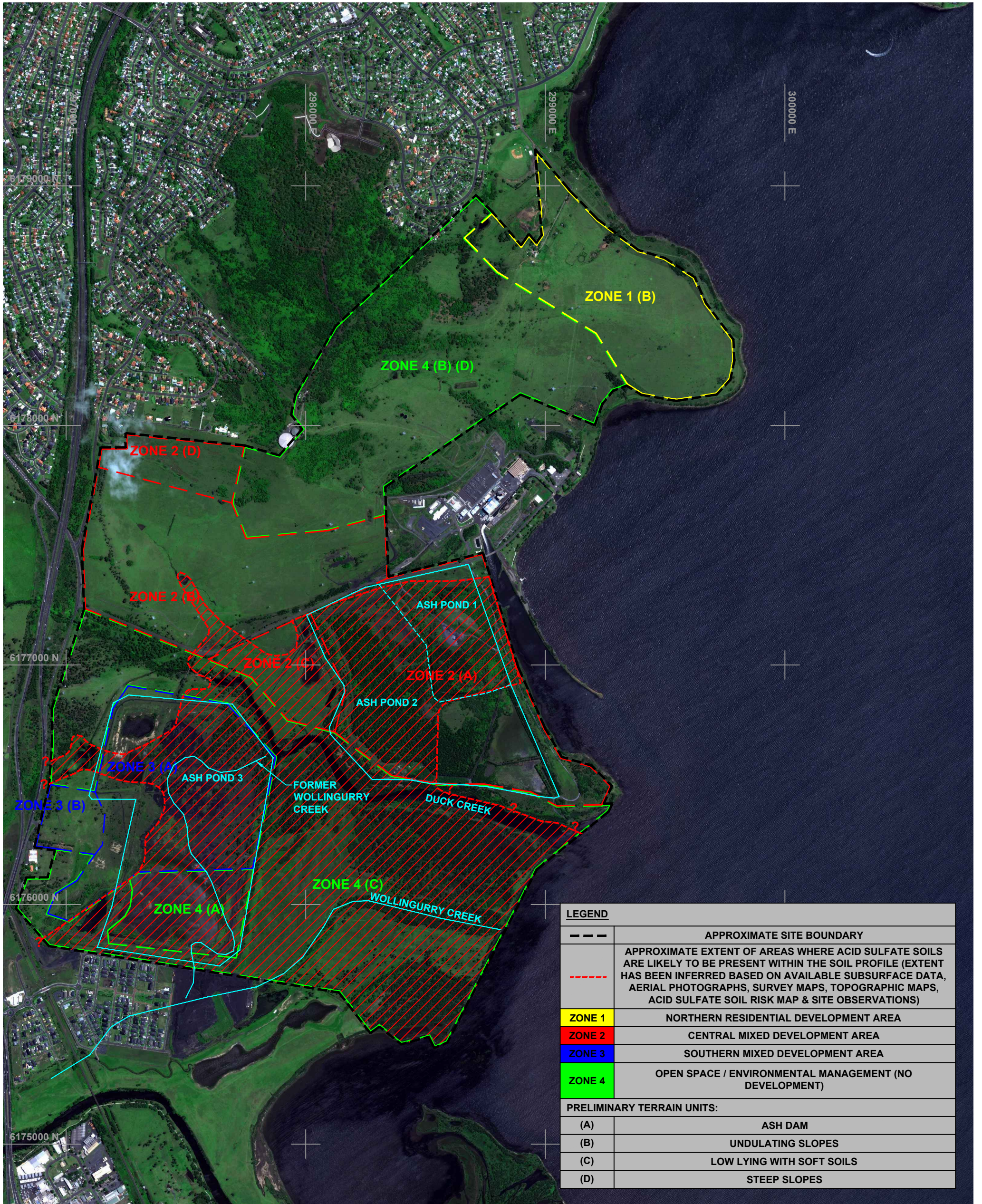
CATEGORY	MAP CODE	GENERALISED SUBSURFACE PROFILE DESCRIPTION
FILLED AND MAN MADE GROUND WITH SIGNIFICANT GROUND DISTURBANCE	F-1	ASH PONDS 1 AND 2. UNIT 1B (COALWASH) AND UNIT 1C (ASH FILL) TO A SIGNIFICANT THICKNESS – 5M TO 11M THICK, OVERLYING UNIT 5A ESTUARINE SOILS LESS THAN 2M THICK.
	F-2	ASH PONDS 1 AND 2. UNIT 1B (COALWASH) AND UNIT 1C (ASH FILL) TO A SIGNIFICANT THICKNESS – UP TO 10M THICK, OVERLYING UNIT 5A ESTUARINE SOILS THICKER THAN 2M.
	F-3	ASH POND 3. UNIT 1C (ASH FILL) TO A THICKNESS OF 0.5M TO 3M, OVERLYING UNIT 5A ESTUARINE SOILS LESS THAN 2M THICK.
	F-4	ASH POND 3. UNIT 1C (ASH FILL) TO A THICKNESS OF 0.5M TO 3M, OVERLYING UNIT 5A ESTUARINE SOILS THICKER THAN 2M.
	F-5	GENERAL FILL – COULD CONTAIN ANY FILL UNIT INCLUDING UNIT 1A TO 1D, AND A COMBINATION OF UNDERLYING SOIL UNITS (2,3,4,5 OR 6).
	F-E1	SIGNIFICANT MANMADE GROUND DISTURBANCE OVERLYING ESTUARINE FLOODPLAIN AREAS (UNIT E-1) UNDERLAIN BY POTENTIALLY COMPRESSIBLE SOILS LESS THAN 2M THICK. LIKELY SOMEWHAT COMPLEX SUBSURFACE GROUND CONDITIONS EXIST INCLUDING BURIED RECENT AND OLDER CREEK CHANNELS, BACKSWAMPS, INTERLAYERED SAND DEPOSITS OR SAND LENSES, POSSIBLE ALLUVIAL DEPOSITS WITHIN THE ESTUARINE SOILS.
	F-E2	SIGNIFICANT MANMADE GROUND DISTURBANCE OVERLYING ESTUARINE FLOODPLAIN AREAS (UNIT E-2) UNDERLAIN BY POTENTIALLY COMPRESSIBLE SOILS THICKER THAN 2M. LIKELY COMPLEX SUBSURFACE GROUND CONDITIONS EXIST INCLUDING BURIED RECENT AND OLDER CREEK CHANNELS, BACKSWAMPS, INTERLAYERED SAND DEPOSITS OR SAND LENSES, POSSIBLE ALLUVIAL DEPOSITS WITHIN THE ESTUARINE SOILS.
ESTUARINE FLOODPLAIN	E-1	LITTLE OR NO MANMADE GROUND DISTURBANCE. ESTUARINE FLOODPLAIN AREAS UNDERLAIN BY POTENTIALLY COMPRESSIBLE SOILS LESS THAN 2M THICK. LIKELY SOMEWHAT COMPLEX SUBSURFACE GROUND CONDITIONS EXIST INCLUDING BURIED RECENT AND OLDER CREEK CHANNELS, BACKSWAMPS, INTERLAYERED SAND DEPOSITS OR SAND LENSES, POSSIBLE ALLUVIAL DEPOSITS WITHIN THE ESTUARINE SOILS.
	E-2	LITTLE OR NO MANMADE GROUND DISTURBANCE. ESTUARINE FLOODPLAIN AREAS UNDERLAIN BY POTENTIALLY COMPRESSIBLE SOILS THICKER THAN 2M. LIKELY COMPLEX SUBSURFACE GROUND CONDITIONS EXIST INCLUDING BURIED RECENT AND OLDER CREEK CHANNELS, BACKSWAMPS, INTERLAYERED SAND DEPOSITS OR SAND LENSES, POSSIBLE ALLUVIAL DEPOSITS WITHIN THE ESTUARINE SOILS.
ALLUVIAL FLOODPLAIN	A	ALLUVIAL FLOODPLAIN AREAS UNDERLAIN GENERALLY BY STIFF SOILS. POSSIBLE SMALL LENSES OF ESTUARINE SOIL EXIST WITHIN THE PREDOMINANTLY ALLUVIAL SOIL PROFILE.
HILLSIDE AREAS - LOWER FOOTSLOPES	H-L	LOWER UNDULATING FOOTSLOPES OF HILLSIDE AREAS, GENERALLY WITH SLOPES LESS THAN OR EQUAL TO ABOUT 10 DEGREES. EITHER COLLUVIAL AND/OR RESIDUAL SOILS PRESENT IN THESE AREAS. SOIL COVER GENERALLY LESS THAN 2M IN MOST AREAS WITH SOME DEEPER AREAS NEAR GULLIES, OVERLYING EITHER BUDGONG SANDSTONE OR BERRY SILTSTONE ROCK.
HILLSIDE AREAS - UPPER ELEVATED AND STEEPER SLOPES	H-U	UPPER STEEP SLOPES OF HILLSIDE AREAS GENERALLY WITH SLOPES GREATER THAN ABOUT 10 DEGREES. EITHER COLLUVIAL AND/OR RESIDUAL SOILS PRESENT IN THESE AREAS. SOIL COVER GENERALLY LESS THAN 2M IN MOST AREAS WITH SOME DEEPER AREAS NEAR GULLIES, OVERLYING BUDGONG SANDSTONE ROCK.



drawn	SRM / LT
approved	JPT
date	19/08/10
scale	1:15 000
original size	A3

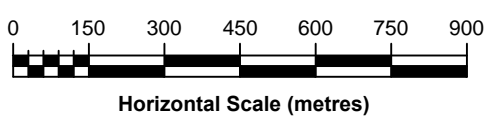
**coffey**  
environments  
SPECIALISTS IN ENVIRONMENTAL,  
SOCIAL AND SAFETY PERFORMANCE

client:	TRUENERGY	
project:	GEOTECHNICAL, CONTAMINATION AND GROUNDWATER INVESTIGATION TALLAWARRA LANDS, YALLAH, NSW	
title:	GEOTECHNICAL CONSTRAINTS - SIMPLE QUALITATIVE RATING SYSTEM USED FOR GEOTECHNICAL TERRAIN UNITS	
project no:	ENVIWOLL00250AB-R05	figure no: FIGURE 10B



LEGEND	
---	APPROXIMATE SITE BOUNDARY
---	APPROXIMATE EXTENT OF AREAS WHERE ACID SULFATE SOILS ARE LIKELY TO BE PRESENT WITHIN THE SOIL PROFILE (EXTENT HAS BEEN INFERRED BASED ON AVAILABLE SUBSURFACE DATA, AERIAL PHOTOGRAPHS, SURVEY MAPS, TOPOGRAPHIC MAPS, ACID SULFATE SOIL RISK MAP & SITE OBSERVATIONS)
ZONE 1	NORTHERN RESIDENTIAL DEVELOPMENT AREA
ZONE 2	CENTRAL MIXED DEVELOPMENT AREA
ZONE 3	SOUTHERN MIXED DEVELOPMENT AREA
ZONE 4	OPEN SPACE / ENVIRONMENTAL MANAGEMENT (NO DEVELOPMENT)
PRELIMINARY TERRAIN UNITS:	
(A)	ASH DAM
(B)	UNDULATING SLOPES
(C)	LOW LYING WITH SOFT SOILS
(D)	STEEP SLOPES

AERIAL IMAGE SOURCE: WOLLONGONG CITY COUNCIL 2010



drawn	CCQ / LT
approved	SRM / JMF
date	19/08/10
scale	1:15 000
original size	A3

**coffey**  
environments  
SPECIALISTS IN ENVIRONMENTAL,  
SOCIAL AND SAFETY PERFORMANCE

client:	TRUENERGY
project:	GEOTECHNICAL, CONTAMINATION AND GROUNDWATER INVESTIGATION TALLAWARRA LANDS, YALLAH, NSW
title:	APPROXIMATE EXTENT OF AREAS WHERE ACID SULFATE SOILS ARE LIKELY TO BE PRESENT
project no:	ENVIWOLL00250AB-R05
figure no:	FIGURE 11

# Appendix A

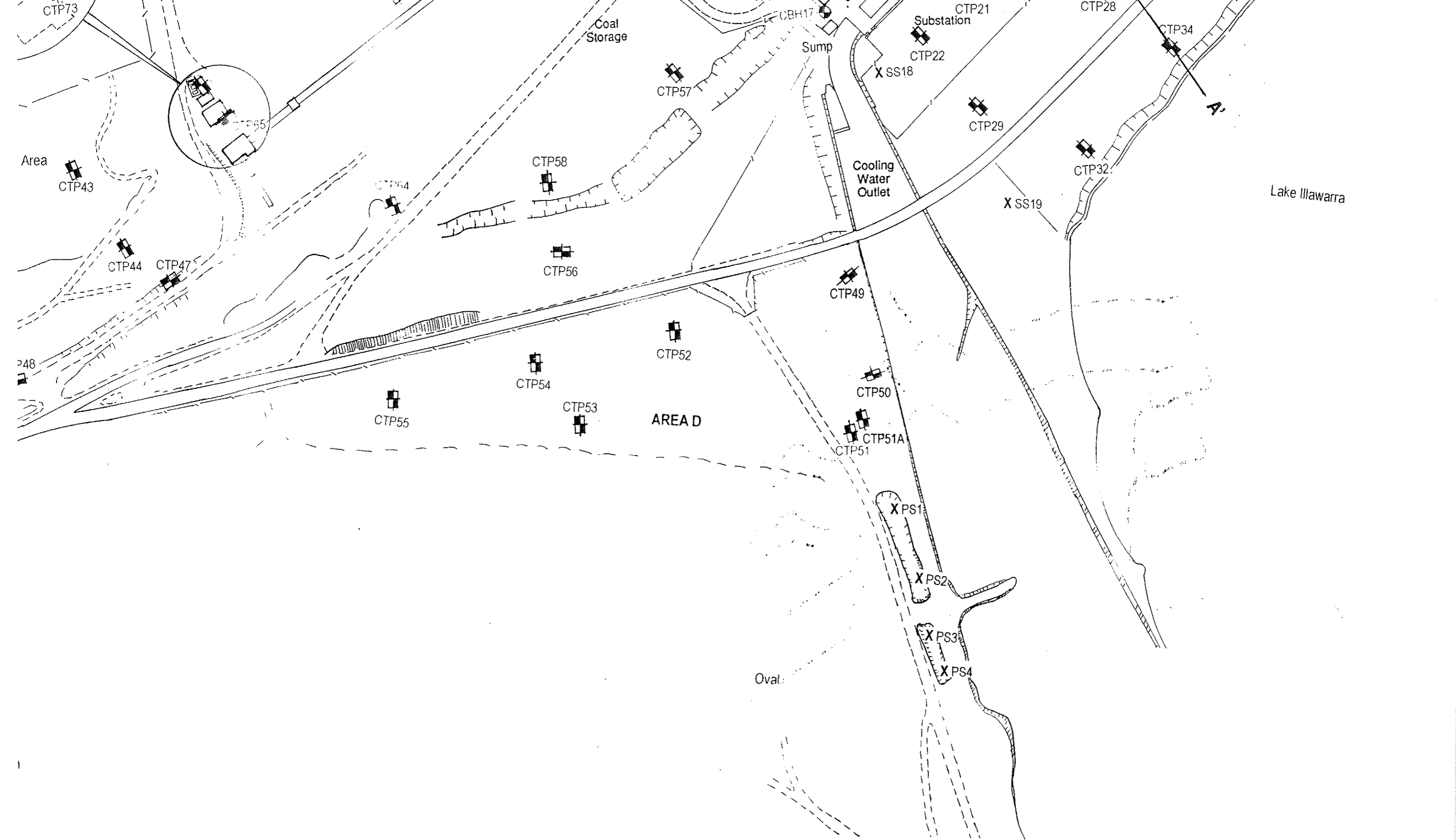
## Reports and Figures from Previous Investigations

**Geotechnical, Contamination and Groundwater Investigation,  
Tallawarra Lands, Yallah, NSW**





- A-1 Plans (former Coffey Geosciences Figures 12 and 14)**
- A-2 Douglas Partners 2010 Report**
- A-3 TRUenergy plans showing surface and groundwater monitoring locations**

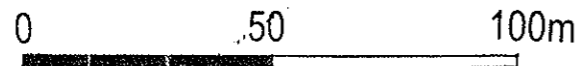
# Appendix A-1

**Plans (former Coffey Geosciences Figures 12 and 14)**



**LEGEND**

-  Approximate Test Pit Location
-  Approximate Borehole Location
-  Approximate Monitoring Well Location
-  Approximate Surface Sampling Location



**Coffey Geosciences Pty Ltd**

Geotechnical | Resources | Environmental | Technical | Project Management

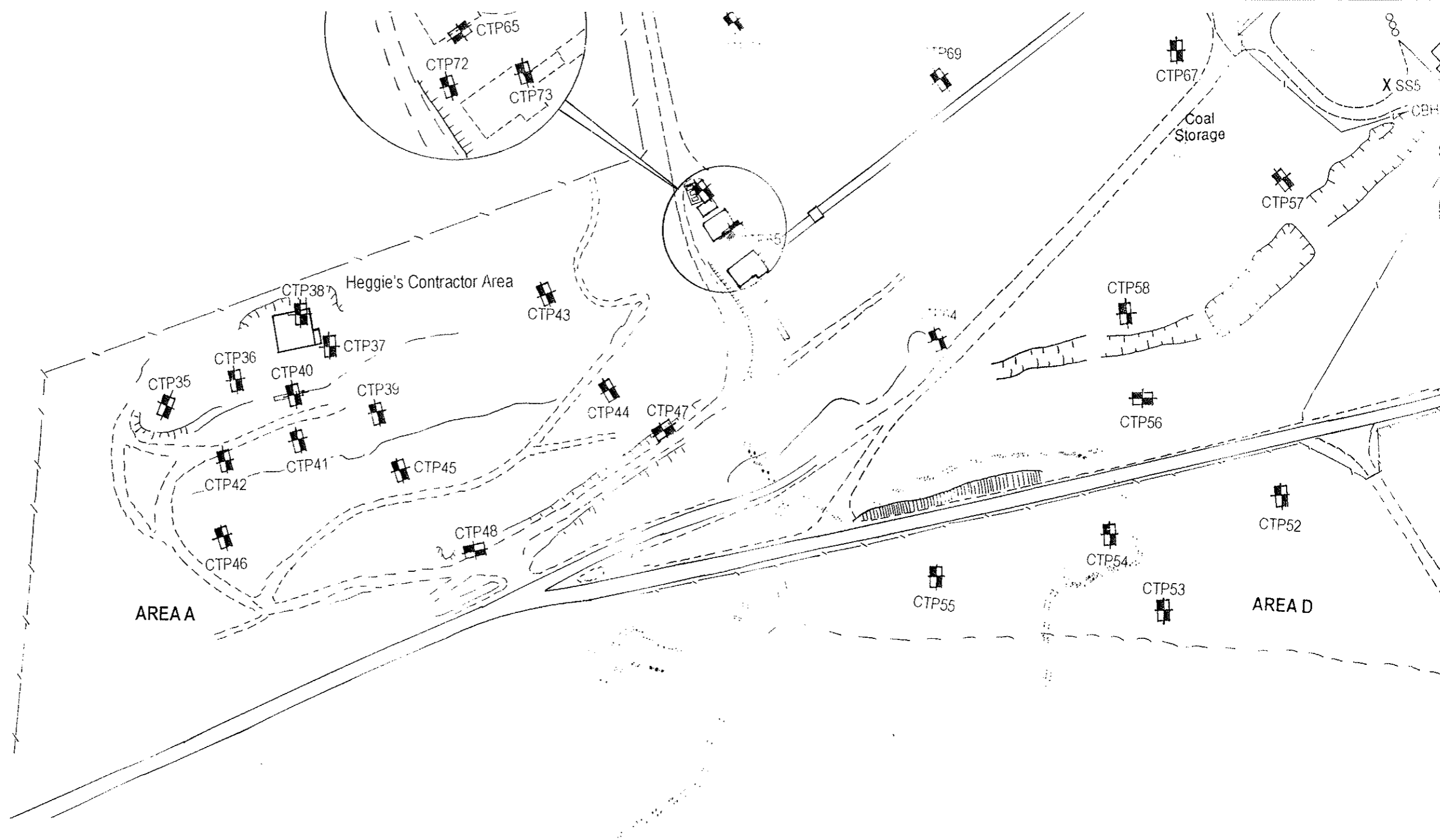
Drawn	TRR
Approved	<i>[Signature]</i>
Date	3/7/02
Scale	1:1,500

**PACIFIC POWER  
SITE CONTAMINATION ASSESSMENT  
TALLAWARRA POWER STATION, YALLAH, NSW  
APPROXIMATE POWER STATION SITE SAMPLING LOCATIONS**

Drawn by:

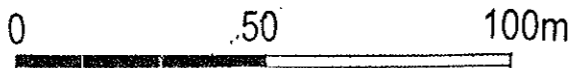
**FIGURE 12**

Job: E12538/1-AR



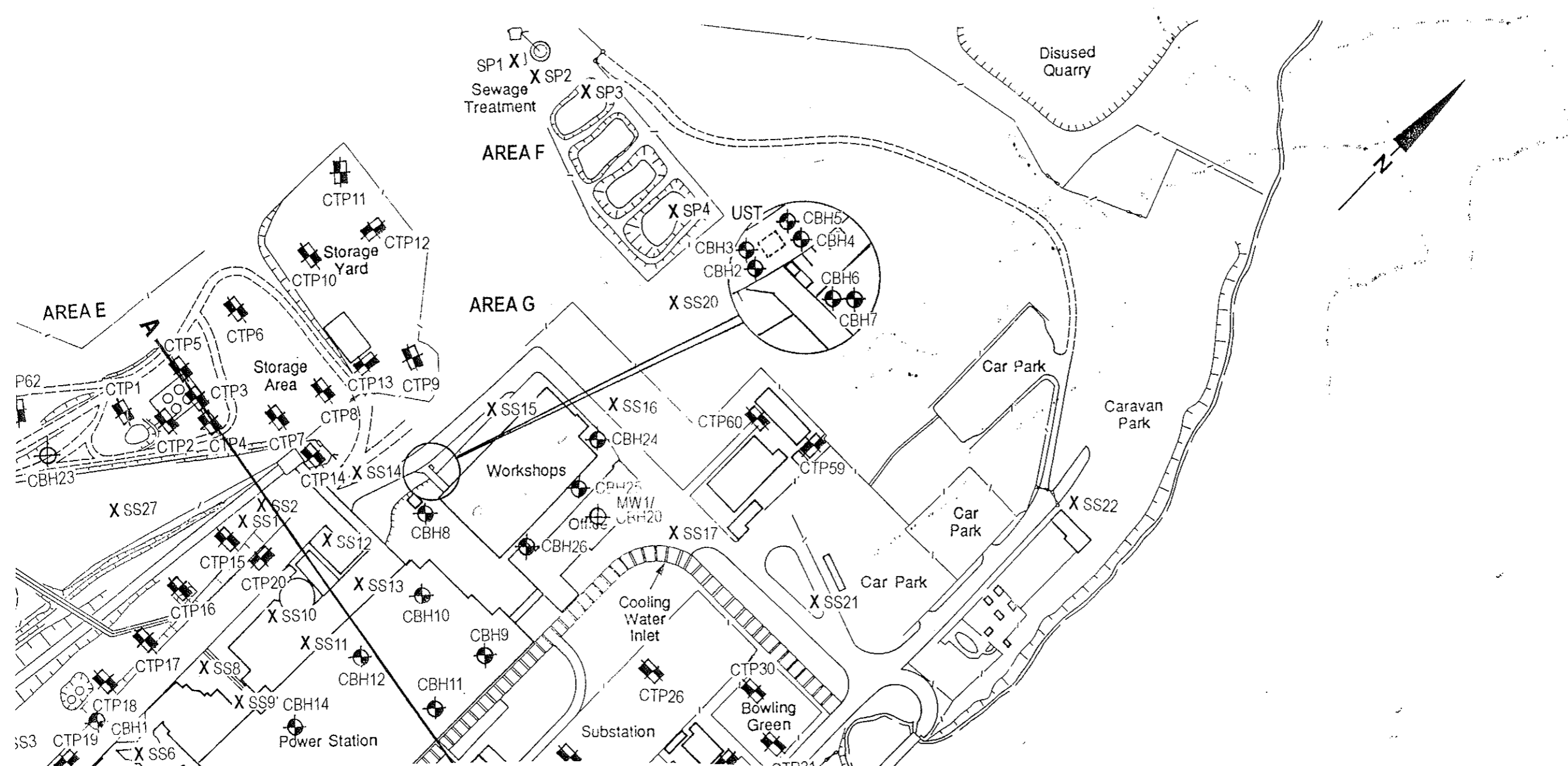
**LEGEND**

- Approximate Test Pit Location
- Approximate Borehole Location
- Approximate Monitoring Well Location
- Approximate Surface Sampling Location



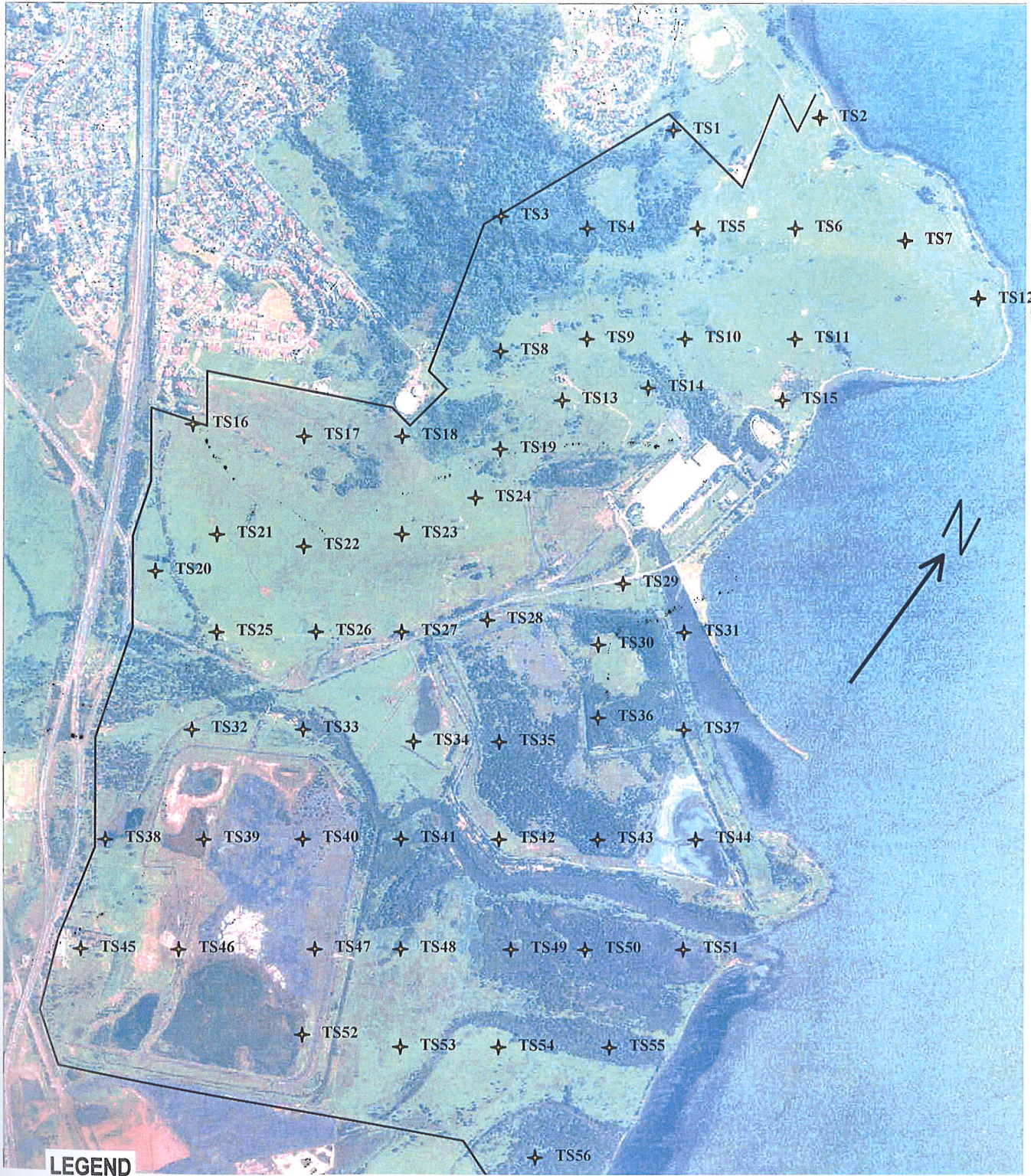
<b>Coffey Geosciences Pty Ltd</b>		Geotechnical   Resources   Environmental   Technical   Project Management	
Drawn	TRR	<b>PACIFIC POWER</b> <b>SITE CONTAMINATION ASSESSMENT</b> <b>TALLAWARRA POWER STATION, YALLAH, NSW</b> <b>APPROXIMATE POWER STATION SITE SAMPLING LOCATIONS</b>	
Approved	<i>[Signature]</i>		
Date	2/7/02		
Scale	1:1,500		
		Drawing no: <b>FIGURE 12</b>	
		Job no: E12538/1-AR	

X SP5  
Irrigation Area  
X SP6



- LEGEND**
- Approximate Test Pit Location
  - Approximate Borehole Location
  - Approximate Monitoring Well Location
  - Approximate Surface Sampling Location

<b>Coffey Geosciences Pty Ltd</b>		Geotechnical   Resources   Environmental   Technical   Project Operations
Drawn	TRR	<b>PACIFIC POWER SITE CONTAMINATION ASSESSMENT TALLAWARRA POWER STATION, YALLAH, NSW APPROXIMATE POWER STATION SITE SAMPLING LOCATIONS</b>
Approved	<i>[Signature]</i>	
Date	<i>3/7/02</i>	
Scale	1:1,500	
		Drawing no: <b>FIGURE 12</b> Ref: E12538/1-AR



**LEGEND**

- Approximate Site Boundary
- + TS56 Approximate Surface Sampling Location



<b>Coffey Geosciences Pty Ltd</b> ACN 056 335 516		Geotechnical   Resources   Environmental   Technical   Project Management	
Drawn	TRR	<b>PACIFIC POWER</b> <b>SITE CONTAMINATION ASSESSMENT</b> <b>TALLAWARRA POWER STATION, YALLAH</b> <b>PERIMETER LAND SAMPLING LOCATIONS</b>	Drawing no:
Approved	<i>QMF</i>		<b>FIGURE 14</b>
Date	<i>31/10/02</i>		Job no: <b>E12538/1-AR</b>
Scale	<b>AS SHOWN</b>		

# Appendix A-2

**Douglas Partners 2010 Report**



**Douglas Partners**  
*Geotechnics • Environment • Groundwater*

*Integrated Practical Solutions*

**REPORT  
ON  
ASBESTOS CONTAMINATION ASSESSMENT**

**TALLAWARRA LANDS  
TALLAWARRA**

*Prepared for:*  
**TRUENERGY TALLAWARRA PTY LTD**

**PROJECT 40661.03 REVISION 1  
DECEMBER 2010**



# **Douglas Partners**

**Geotechnics • Environment • Groundwater**

**REPORT  
ON  
ASBESTOS CONTAMINATION ASSESSMENT**

**TALLAWARRA LANDS  
TALLAWARRA**

*Prepared for:*  
**TRUENERGY TALLAWARRA PTY LTD**

**PROJECT 40661.03 REVISION 1  
DECEMBER 2010**

**Douglas Partners Pty Ltd**  
ABN 75 053 980 117  
1/1 Luso Drive  
Unanderra NSW 2526  
Australia

PO Box 486  
Unanderra NSW 2526  
**Phone (02) 4271 1836**  
Fax (02) 4271 1897  
[wollongong@douglaspartners.com.au](mailto:wollongong@douglaspartners.com.au)  
[www.douglaspartners.com.au](http://www.douglaspartners.com.au)



# TABLE OF CONTENTS

---

	Page
1. INTRODUCTION .....	1
2. SCOPE OF WORK .....	2
3. SITE INFORMATION.....	2
3.1 Site Identification .....	2
3.2 Current Site Condition .....	3
3.3 Regional Geology and Site Topography .....	3
4. SAMPLING AND ANALYSIS PLAN.....	4
4.1 Sampling Pattern .....	4
4.2 Sampling Density .....	4
4.3 Sample Locations.....	4
4.4 Analytical Scheme .....	5
4.5 Sample Collection .....	5
4.6 Sampling Procedure.....	5
5. RESULTS .....	6
5.1 Field Results.....	6
5.2 Laboratory Results .....	7
6. DISCUSSION AND CONCLUSION.....	7
7. RECOMMENDATIONS .....	7
8. LIMITATIONS .....	8
APPENDIX A:	Note Relating to This Report
APPENDIX B:	Drawing 1 Site Boundary and site locality Drawing 2 Lower Section of the site Drawing 3 Western Mid Section of the Site Drawing 4 Eastern Middle Section of the Site Drawing 5 Northern Section of the Site
APPENDIX C:	Sample Records
APPENDIX D:	Chain-of-Custody Despatch Sheets NATA Laboratory Reports

BAH/JAS:lp  
Project 40661.03 REVISION 1  
21 December 2010

---

**REPORT ON ASBESTOS CONTAMINATION ASSESSMENT  
TALLAWARRA LANDS, TALLAWARRA**

---

## **1. INTRODUCTION**

This report presents the results of an asbestos contamination assessment undertaken by Douglas Partners Pty Ltd (DP) at Tallawarra Lands (the site) which surround Tallawarra Power Station, Tallawarra. The assessment was commissioned by the owner of the site, TRUenergy.

Prior to construction of the current power station, the former coal powered power station was demolished. Asbestos containing material (ACM) was identified within the former power station buildings and, during demolition, ACM waste, namely building rubble, was remediated via placement in a designated containment cell within the site. It is understood that the remediation was completed under NSW Department of Environment, Climate Change and Water (DECCW) Auditor supervision and the site was deemed suitable for its ongoing use. The aim of this assessment was to provide factual information on the presence of asbestos fibres potentially deposited across the Tallawarra Lands during the demolition of the power station and ACM waste remediation, as requested by the client.

The assessment included the collection of over 530 surface samples, laboratory analysis of the samples for asbestos and reporting.

## 2. SCOPE OF WORK

The scope of the assessment included the following works:

- Set out of an approximate 100 x 100 m grid pattern across the site using a GIS mapping program and hand held GPS;
- Visual assessment of the site;
- Collection of surface soil samples using with hand tools on the 100 x 100 m grid nodes;
- Laboratory testing of samples for asbestos at a NATA accredited laboratory;
- Preparation of this factual report on the findings of the above scope of works and an assessment of the potential asbestos contamination.

## 3. SITE INFORMATION

### 3.1 Site Identification

The site has an area of 510 ha surrounding, but outside the boundary of the new Tallawarra power station (excluded from investigation) located in the central eastern portion of the site (refer to Drawing 1, Appendix A). The site comprises of 17 individual parcels of land as detailed in Table 1. The power station area has been excluded from this investigation.

**Table 1: Site Lot and Deposited Plan Numbers**

Lot 1 DP 109795	Lot 21 DP 774118
Lot 3 DP 109795	Lot 22 DP 774118
Lot 1 DP 543285	Lot 1 DP 792664
Lot 1 DP 551658	Lot 2 DP 792664
Lot 10 DP 552933	Lot 7 DP 1049520
Lot 11 DP 552933	Lot 8 DP 1049520
Lot 151 DP 628980	Lot 15 DP 1050255
Lot 20 DP 633211	Lot 1091 DP 1140369
Lot 102 DP 716727	

The site is bounded to the west by residential and rural land, as well as the Princes Highway and the Southern Freeway, to the east by Lake Illawarra, to the south by residential and vacant land and to the north by Mt Brown reserve and residential land.

### 3.2 Current Site Condition

The site was inspected on the 13 – 28 May 2010. The majority of the northern part of the site consists of rural fenced paddocks which were being used for agricultural purposes. A rural homestead and compound was located in the northern most part of the site and included sewage septic dams, sheds, fences, smaller fenced paddocks and animal shelters. Two large water tanks are located in the central part of this northern section.

The southern portion of the site consists of three ash ponds which are currently no longer in use (Site induction, dated 13 May 2010), cleared paddocks for agricultural use, dense vegetated areas of both natural and introduced species, a roadbase stockpile and an asbestos landfill. The former ash ponds have now become overgrown in parts and contain small quantities of water in some areas.

### 3.3 Regional Geology and Site Topography

Reference to the Kiama 1:100,000 Soil Landscapes Sheet shows that the site is underlain by two distinct different lithologies. The northern portion of the site is mostly underlain by Deep (>150cm) Prairie Soils which occur on the crests and upper slopes, brown Krasnozems on midslopes and red Podzolic Soils and Prairie Soils on lower slopes and drainage plains. An area in the north west is identified as Shallow (50-100 cm) Brown Podzolic Soils and Xanthozems on upper slopes, Lithosols on simple slopes and shallow (<50 cm) Brown Earths on midslopes and lower slopes. The southern portion of the site is described as disturbed land (in the power station and ash pond area) and Friable Alluvial Loams and Siliceous Sands on the upper floodplains with dark brown sands and heavy clays Prairie Soils (Gn2.41) and Yellow Podzolic Soils (Dy5.41) on lower alluvial flats.

The topography of the site is that it slopes from 110 m AHD in the north western portion of the site to 2 m AHD in the south and eastern portions of the site.

## 4. SAMPLING AND ANALYSIS PLAN

The sampling and analysis plan is described in the following sections.

### 4.1 Sampling Pattern

Sample locations were based on a 100 m x 100 m grid pattern of the site and excluded inaccessible areas such as densely vegetated areas and locations that were submerged with water such as Duck Creek and dams. The sampling pattern was chosen to provide a systematic, unbiased assessment over the whole site.

### 4.2 Sampling Density

Based on the size of the site (510 ha) and in accordance with the NSW EPA *Contaminated Sites: Sampling Design Guidelines*, 1995, a theoretical minimum of approximately 5600 sample points are required for a systematic site characterisation plan (11 samples per hectare). However, the sampling density that has been applied for this asbestos assessment is one sample per hectare which is considered appropriate to achieve the aim of the assessment, that is, to determine the potential for surface contamination by asbestos fibres across the site. If there are positive asbestos identifications then a more detailed sampling programme around the sample node would be appropriate.

### 4.3 Sample Locations

Sample locations are indicated in Drawing 2 - 5, Appendix B. A total of 536 surface sample locations were selected across the site based on the 100 m x 100 m grid pattern.

The sample locations were identified in the field based on the overlay of a grid on a geo-referenced aerial photograph and using GIS mapping programs and a hand held GPS.

Locations that were not accessible were relocated to a more appropriate location nearby. Both the relocated GPS locations and soil description were recorded on the sample record sheets.

#### **4.4 Analytical Scheme**

All samples collected were analysed for asbestos fibres.

#### **4.5 Sample Collection**

The surface samples were collected by removing the grassed surface with hand tools e.g. shovel or pick and then approximately 40 g of soil was placed into an individually labelled zip lock bag. The soil description was noted on the sample record sheets and the samples placed in a secure container for transport to the laboratory.

Sample collection was undertaken by a tertiary educated environmental engineer with three years continuous contaminated site sampling experience and a tertiary educated environmental scientist with two years continuous contaminated site sampling experience. The work was supervised by a tertiary educated environmental engineer with four years continuous contaminated site sampling experience.

#### **4.6 Sampling Procedure**

Environmental sampling was conducted according to standard operating procedures described in the DP *Field Procedures Manual* and all sampling data was recorded on sample record sheets. Soil sampling was conducted in accordance with standard operating procedures which included:

- A nitrile disposable glove to be worn and discarded after each sample is collected.
- Labelling of the sample bags with individual and unique identification including Project No. Sample No.

- placement of the bags into a enclosed and secure container for transport to the laboratory; and
- Use of chain-of-custody/sample record documentation to ensure that sample tracking and custody can be cross-checked at any point in the transfer of samples from the field to hand-over to the laboratory.

## 5. RESULTS

### 5.1 Field Results

The soil descriptions and sample locations for each sample were noted on the sample record sheets which are provided in Appendix C. The various surface soils encountered on the site is summarised as follows:

TOPSOIL:	Brown silty clay with some rootlets.
FILLING:	The filling varied over the site and comprised of brown gravelly clay with some brick fragments, and some silt; brown silty clay with some rootlets, gravel, and organic matter; black brown gravelly (coal wash) silt; grey clay filling; brown clay with some gravel; orange brown silty clay with some gravel; dark grey sandy gravel; brown clayey sand; grey sandy silty clay; grey silt; brown sandy clay; light grey gravelly silty clay; light brown mottled orange clay; light grey gravelly silty clay; black gravel (coal wash); grey sandy gravel;
CLAY:	Dark brown clay; brown clay; grey clay with some organic matter and rootlets.
SAND	Brown sand with some shell fragments and rootlets; brown slightly clayey sand.
SILTY SAND	Brown grey silty sand with some clay.
SANDY CLAY	Brown slightly sandy clay with some rootlets; grey slightly sandy clay; red brown sandy clay.
SILTY CLAY	Brown silty clays with some rootlets, sandstone gravel, shell fragments; grey sandy silty clay; light brown silty clay.

## 5.2 Laboratory Results

The samples were analysed by a NATA accredited Laboratory and the laboratory reports can be found in Appendix C along with chain of custody documentation.

No asbestos was detected at limit of 0.1 g/kg (0.01% w/w) in any of the samples.

## 6. DISCUSSION AND CONCLUSION

This assessment aimed to provide supplementary factual information regarding the presence of asbestos fibres deposited across the Tallawarra Lands following the demolition of the power station and ACM waste remediation, as requested by the client. This was completed by undertaking surface soil samples and laboratory analysis at 536 locations on a 100 m square grid across the site.

Of the 536 samples analysed for asbestos, no detections were recorded at the limit of reporting of 0.1 g/kg (0.01% w/w) in any of the samples. Additionally, the laboratory did not identify any trace amounts of asbestos in the form of fibres.

## 7. RECOMMENDATIONS

This assessment was aimed at providing factual information on the potential presence of asbestos fibres deposited across the Tallawarra Lands following the demolition of the power station and ACM waste remediation. The assessment did not investigate the potential for contamination arising from the historic and current site use. If redevelopment of the site is proposed, it is recommended that the full extent for the potential for contamination be investigated prior to redevelopment.

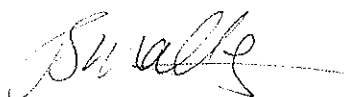
## 8. LIMITATIONS

Douglas Partners Pty Ltd (DP) has prepared this report for this project at Tallawarra Lands, Tallawarra in accordance with DP's proposal dated 9 April 2010 and acceptance received from David Maslen, dated 30 April 2010. The work was carried out under DP Conditions of Engagement. This report is provided for the exclusive use of the TRUenergy for the specific project and purpose as described in the report. It should not be used by or relied upon for other projects or purposes on the same or other site or by a third party.

The results provided in the report are considered to be indicative of the sub-surface conditions on the site only to the depths investigated at the specific sampling and/or testing locations, and only at the time the work was carried out. DP's advice may be based on observations, measurements, tests or derived interpretations. The accuracy of the advice provided by DP in this report is limited by unobserved features and variations in ground conditions across the site in areas between test locations and beyond the site boundaries or by variations with time. The advice may be limited by restrictions in the sampling and testing which was able to be carried out, as well as by the amount of data that could be collected given the project and site constraints. Actual ground conditions and materials behaviour observed or inferred at the test locations may differ from those which may be encountered elsewhere on the site. Should variations in subsurface conditions be encountered, then additional advice should be sought from DP and, if required, amendments made.

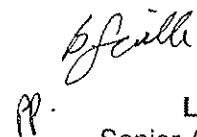
This report must be read in conjunction with the attached "Notes Relating to This Report" and any other attached explanatory notes and should be kept in its entirety without separation of individual pages or sections. DP cannot be held responsible for interpretations or conclusions from review by others of this report or test data, which are not otherwise supported by an expressed statement, interpretation, outcome or conclusion stated in this report. In preparing this report DP has necessarily relied upon information provided by the client and/or their agents.

### DOUGLAS PARTNERS PTY LTD



**Jane Smalley**  
Environmental Engineer

Reviewed by:



**L Rockett**  
Senior Associate

---

***APPENDIX A***

---

*Notes Relating to This Report*

# About this Report

# Douglas Partners



## Introduction

These notes have been provided to amplify DP's report in regard to classification methods, field procedures and the comments section. Not all are necessarily relevant to all reports.

DP's reports are based on information gained from limited subsurface excavations and sampling, supplemented by knowledge of local geology and experience. For this reason, they must be regarded as interpretive rather than factual documents, limited to some extent by the scope of information on which they rely.

## Copyright

This report is the property of Douglas Partners Pty Ltd. The report may only be used for the purpose for which it was commissioned and in accordance with the Conditions of Engagement for the commission supplied at the time of proposal. Unauthorised use of this report in any form whatsoever is prohibited.

## Borehole and Test Pit Logs

The borehole and test pit logs presented in this report are an engineering and/or geological interpretation of the subsurface conditions, and their reliability will depend to some extent on frequency of sampling and the method of drilling or excavation. Ideally, continuous undisturbed sampling or core drilling will provide the most reliable assessment, but this is not always practicable or possible to justify on economic grounds. In any case the boreholes and test pits represent only a very small sample of the total subsurface profile.

Interpretation of the information and its application to design and construction should therefore take into account the spacing of boreholes or pits, the frequency of sampling, and the possibility of other than 'straight line' variations between the test locations.

## Groundwater

Where groundwater levels are measured in boreholes there are several potential problems, namely:

- In low permeability soils groundwater may enter the hole very slowly or perhaps not at all during the time the hole is left open;

- A localised, perched water table may lead to an erroneous indication of the true water table;
- Water table levels will vary from time to time with seasons or recent weather changes. They may not be the same at the time of construction as are indicated in the report; and
- The use of water or mud as a drilling fluid will mask any groundwater inflow. Water has to be blown out of the hole and drilling mud must first be washed out of the hole if water measurements are to be made.

More reliable measurements can be made by installing standpipes which are read at intervals over several days, or perhaps weeks for low permeability soils. Piezometers, sealed in a particular stratum, may be advisable in low permeability soils or where there may be interference from a perched water table.

## Reports

The report has been prepared by qualified personnel, is based on the information obtained from field and laboratory testing, and has been undertaken to current engineering standards of interpretation and analysis. Where the report has been prepared for a specific design proposal, the information and interpretation may not be relevant if the design proposal is changed. If this happens, DP will be pleased to review the report and the sufficiency of the investigation work.

Every care is taken with the report as it relates to interpretation of subsurface conditions, discussion of geotechnical and environmental aspects, and recommendations or suggestions for design and construction. However, DP cannot always anticipate or assume responsibility for:

- Unexpected variations in ground conditions. The potential for this will depend partly on borehole or pit spacing and sampling frequency;
- Changes in policy or interpretations of policy by statutory authorities; or
- The actions of contractors responding to commercial pressures.

If these occur, DP will be pleased to assist with investigations or advice to resolve the matter.

# *About this Report*

## **Site Anomalies**

In the event that conditions encountered on site during construction appear to vary from those which were expected from the information contained in the report, DP requests that it be immediately notified. Most problems are much more readily resolved when conditions are exposed rather than at some later stage, well after the event.

## **Information for Contractual Purposes**

Where information obtained from this report is provided for tendering purposes, it is recommended that all information, including the written report and discussion, be made available. In circumstances where the discussion or comments section is not relevant to the contractual situation, it may be appropriate to prepare a specially edited document. DP would be pleased to assist in this regard and/or to make additional report copies available for contract purposes at a nominal charge.

## **Site Inspection**

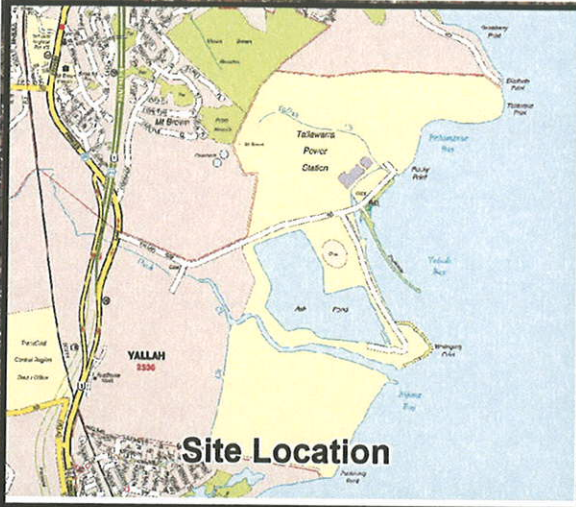
The company will always be pleased to provide engineering inspection services for geotechnical and environmental aspects of work to which this report is related. This could range from a site visit to confirm that conditions exposed are as expected, to full time engineering presence on site.

---

**APPENDIX B**

---

*Drawing 1 Site Boundary and Site Locality*  
*Drawing 2 Lower Section of the Site*  
*Drawing 3 Western Mid Section of the Site*  
*Drawing 4 Eastern Middle Section of the Site*  
*Drawing 5 Northern Section of the Site*



**Douglas Partners**  
*Geotechnics • Environment • Groundwater*

TITLE: SITE LOCATION AND SITE BOUNDARY  
 ASBESTOS CONTAMINATION ASSESSMENT  
 TALLAWARRA LANDS, TALLAWARRA

CLIENT: TRUenergy

PROJECT: 40661.03

DRAWN BY: BAH

SCALE: As Shown

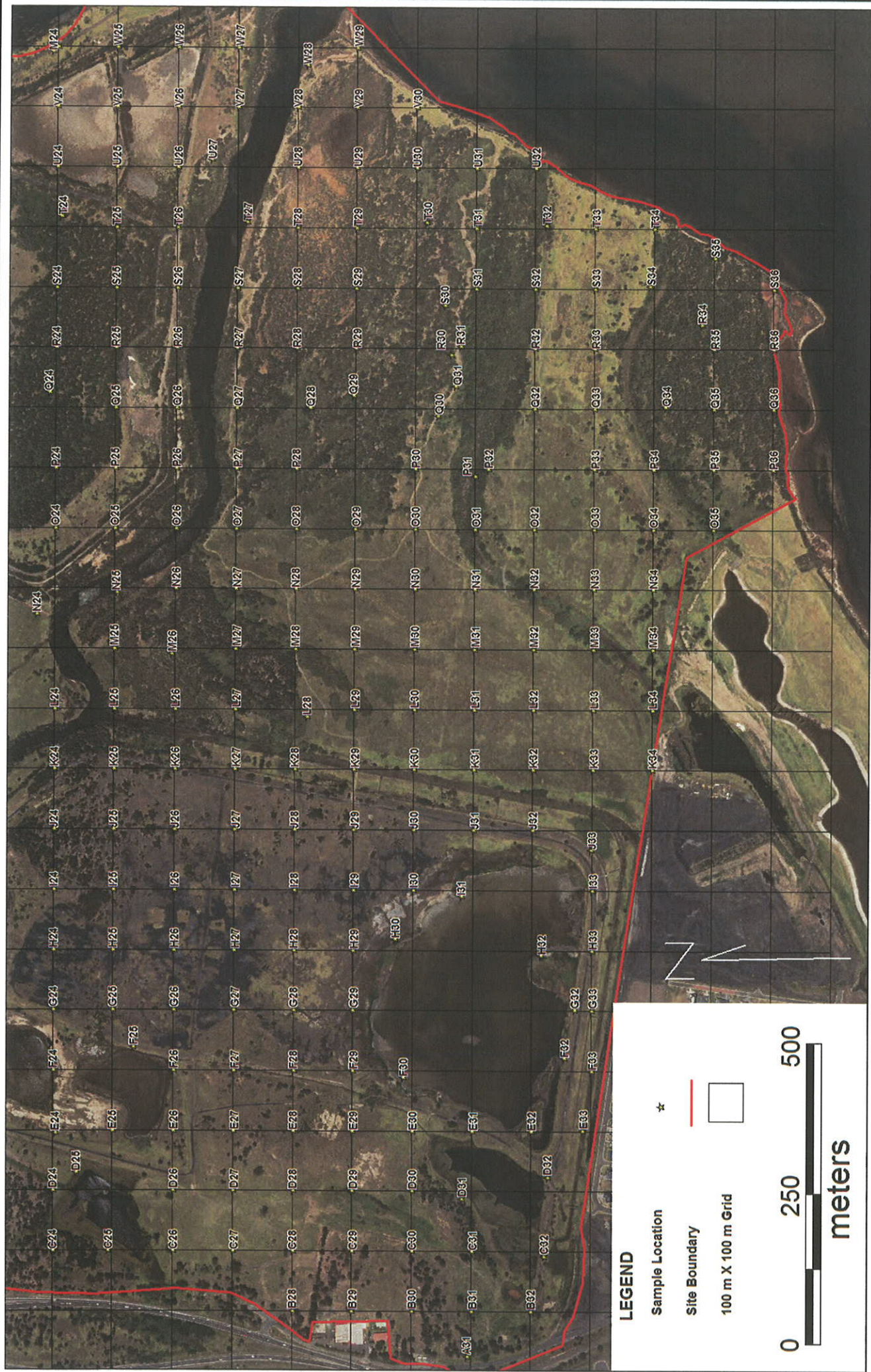
OFFICE: WOLLONGONG

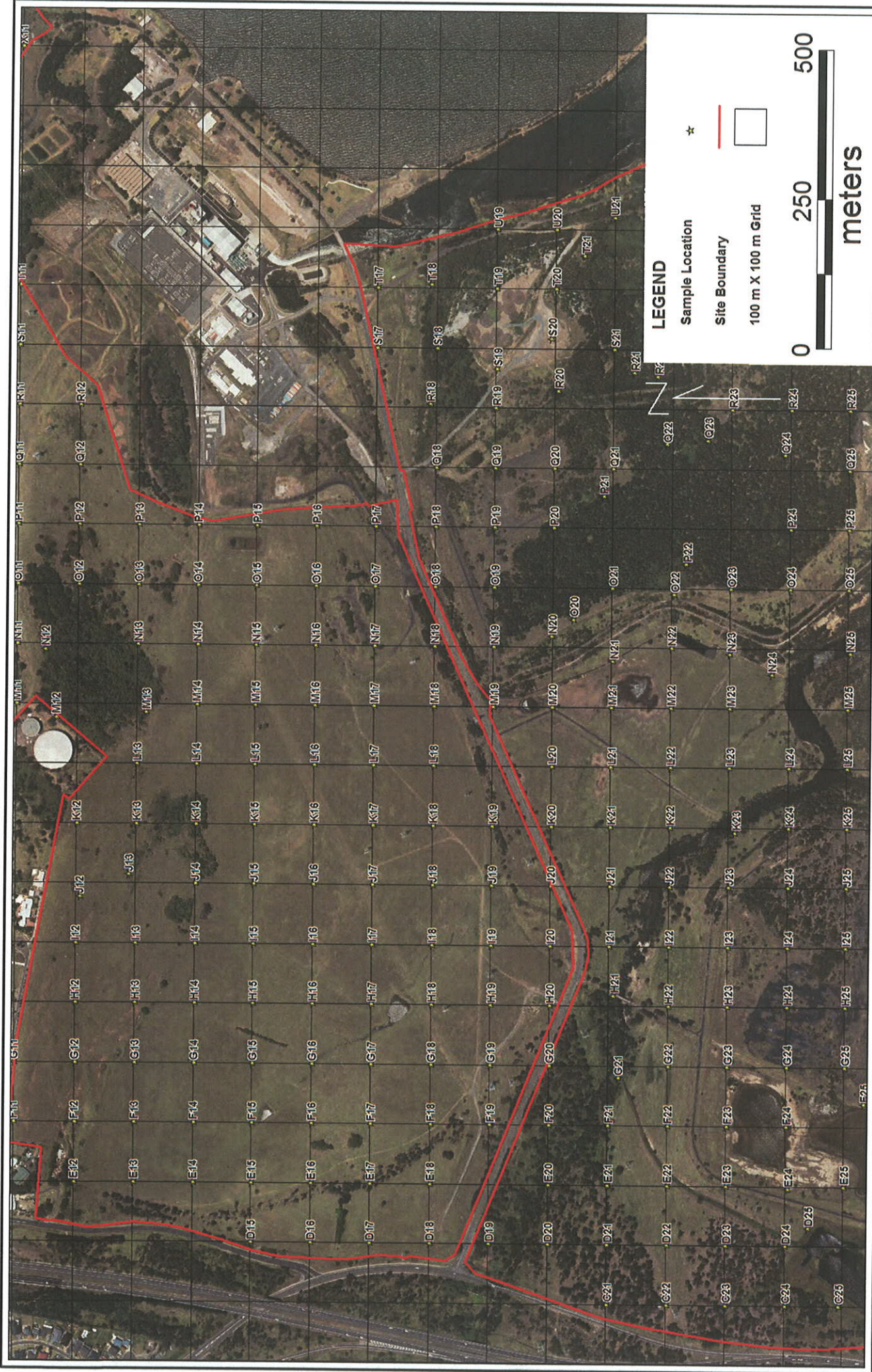
DRAWING: 1

APPROVED BY: JAS

DATE: JUNE 2010

REVISION: A





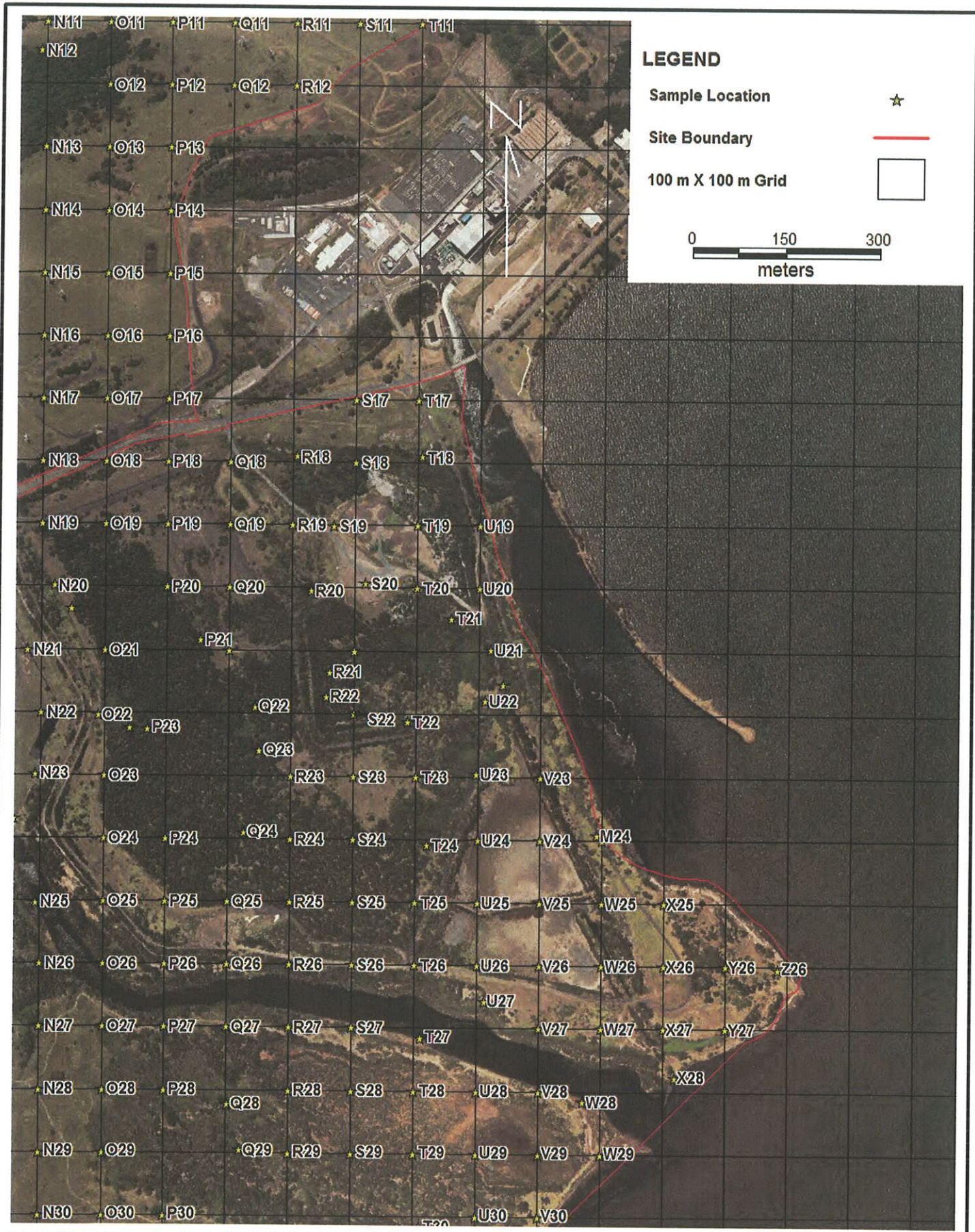
PROJECT: 40661.03  
 DRAWING: 3  
 REVISION:

TITLE: CENTRAL WESTERN PORTION OF SITE  
 ASBESTOS CONTAMINATION ASSESSMENT  
 TALLAWARRA LANDS, TALLAWARRA

CLIENT: TRUenergy  
 DRAWN BY: BAH SCALE: AS SHOWN OFFICE: WOL  
 APPROVED BY: JAS DATE: JUNE 2010

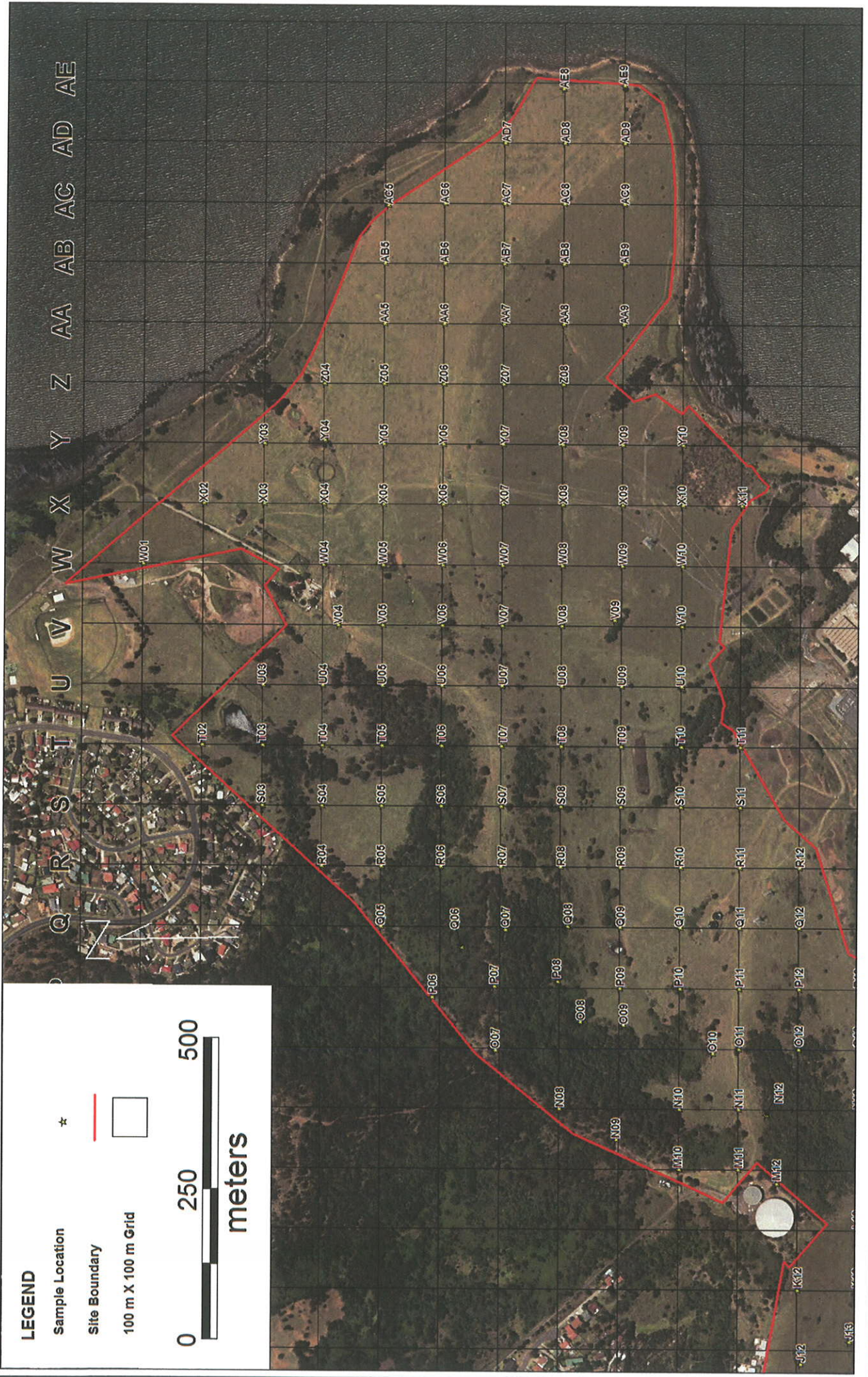


**Douglas Partners**  
 Geotechnics - Environment - Groundwater



TITLE: CENTRAL EASTERN PORTION OF SITE  
ASBESTOS CONTAMINATION ASSESSMENT  
TALLAWARRA LANDS, TALLAWARRA

CLIENT: TRUenergy		PROJECT: 40661.03	
DRAWN BY: BAH	SCALE: As Shown	OFFICE: WOLLONGONG	DRAWING: 4
APPROVED BY: JAS		DATE: JUNE 2010	REVISION: A



**LEGEND**

Sample Location \*

Site Boundary —

100 m X 100 m Grid



PROJECT: 40661.03  
DRAWING: 5  
REVISION:

TITLE: NORTHERN PORTION OF SITE  
ASBESTOS CONTAMINATION ASSESSMENT  
TALLAWARRA LANDS, TALLAWARRA

CLIENT: TRUenergy  
DRAWN BY: BAH SCALE: AS SHOWN OFFICE: WOL  
APPROVED BY: JAS DATE: JUNE 2010

**Douglas Partners**  
Geotechnics • Environment • Groundwater

---

***APPENDIX C***

---

*Sample Records*



# SAMPLE RECORD

DP ID	DATE	DESCRIPTION	EASTING	NORTHING	COMMENTS
A31	24/5/10	TOPSOIL -- brown silty clay topsoil with some rootlets	296825	6176007	paddock
B28	24/5/10	TOPSOIL -- brown silty clay topsoil with some rootlets	296900	6176300	paddock
B29	24/5/10	TOPSOIL -- brown silty clay topsoil with some rootlets	296900	6176200	paddock
B30	24/5/10	TOPSOIL -- brown silty clay topsoil with some rootlets	296900	6176100	paddock
B31	24/5/10	TOPSOIL -- brown silty clay topsoil with some rootlets	296900	6176000	paddock
B32	24/5/10	TOPSOIL -- brown silty clay topsoil with some rootlets	296900	6175900	paddock
C21	21/5/10	TOPSOIL -- brown silty clay topsoil with trace rootlets	297000	6177000	Eucalypt scrublands
C22	21/5/10	TOPSOIL -- brown silty clay topsoil with trace sand, rootlets	297000	6176900	paddock
C23	21/5/10	TOPSOIL -- brown silty clay topsoil with trace rootlets	297000	6176800	Eucalypt scrublands
C24	21/5/10	TOPSOIL -- brown silty clay topsoil with trace rootlets	297000	6176700	Eucalypt scrublands
C25	21/5/10	TOPSOIL -- brown silty clay topsoil with trace rootlets	297000	6176608	edge of pond
C26	24/5/10	TOPSOIL -- brown silty clay topsoil with some rootlets	297000	6176500	paddock
C27	24/5/10	TOPSOIL -- brown silty clay topsoil with some rootlets	297000	6176400	paddock
C28	24/5/10	FILLING -- brown gravelly clay filling with some rootlets	297000	6176300	paddock
C29	24/5/10	TOPSOIL -- brown silty clay topsoil with some rootlets	297000	6176200	paddock
C30	24/5/10	TOPSOIL -- brown silty clay topsoil with some rootlets	297000	6176100	paddock
C31	24/5/10	TOPSOIL -- brown clay topsoil with some rootlets and organic matter	297000	6176000	paddock
C32	24/5/10	FILLING -- brown slightly gravelly clay filling with some rootlets	296992	6175879	on track near dam
D15	19/5/10	TOPSOIL -- brown silty clay topsoil with some rootlets	297100	6177600	paddock
D16	17/5/10	TOPSOIL -- brown silty clay topsoil with some rootlets	297100	6177500	paddock
D17	17/5/10	TOPSOIL -- brown silty clay topsoil with some rootlets	297100	6177400	paddock
D18	19/5/10	TOPSOIL -- brown silty clay topsoil with some rootlets	297100	6177300	paddock
D19	21/5/10	TOPSOIL -- brown silty clay topsoil with some rootlets	297100	6177200	near track
D20	21/5/10	TOPSOIL -- brown silty clay topsoil with some rootlets	297100	6177100	clearing
D21	21/5/10	TOPSOIL -- brown silty clay topsoil with some rootlets and organic matter	297100	6177000	clearing
D22	21/5/10	TOPSOIL -- brown silty clay topsoil with trace rootlets	297100	6176900	paddock
D23	21/5/10	TOPSOIL -- brown silty clay topsoil with trace rootlets	297100	6176800	Eucalypt scrublands
D24	21/5/10	TOPSOIL -- brown silty clay topsoil with trace rootlets	297100	6176700	Eucalypt scrublands
D25	24/5/10	TOPSOIL -- brown silty clay topsoil with some rootlets	297131	6176661	paddock, edge of dam
D26	24/5/10	TOPSOIL -- brown silty clay topsoil with some rootlets	297100	6176500	paddock
D27	24/5/10	TOPSOIL -- brown silty clay topsoil with some rootlets	297100	6176400	paddock
D28	24/5/10	TOPSOIL -- brown silty clay topsoil with some rootlets	297100	6176300	paddock
D29	24/5/10	FILLING -- brown silty clay filling with some roots	297100	6176200	embankment



# SAMPLE RECORD

DP ID	DATE	DESCRIPTION	EASTING	NORTHING	COMMENTS
D30	24/5/10	TOPSOIL – brown silty clay topsoil with some rootlets and organic matter	297100	6176100	paddock
D31	24/5/10	TOPSOIL – brown silty clay topsoil with some rootlets	297087	6176017	edge of dam
D32	24/5/10	FILLING – brown silty clay filling with some gravel, rootlets and organic matter	297124	6175873	edge of dam
E12	17/5/10	TOPSOIL – brown silty clay topsoil with some rootlets and gravel	297200	6177900	paddock
E13	17/5/10	TOPSOIL – brown silty clay topsoil with some rootlets	297200	6177800	paddock
E14	17/5/10	TOPSOIL – brown silty clay topsoil with some rootlets	297200	6177700	paddock
E15	17/5/10	TOPSOIL – brown silty clay topsoil with some rootlets	297200	6177600	paddock
E16	17/5/10	TOPSOIL – brown silty clay topsoil with some rootlets	297200	6177500	paddock
E17	17/5/10	TOPSOIL – brown silty clay topsoil with some rootlets	297200	6177400	paddock
E18	17/5/10	TOPSOIL – brown silty clay topsoil with some rootlets	297200	6177300	paddock
E20	21/5/10	TOPSOIL – brown silty clay topsoil with some rootlets and organic matter	297200	6177100	near creek
E21	21/5/10	TOPSOIL – brown silty clay topsoil with some rootlets and organic matter	297200	6177000	paddock
E22	21/5/10	TOPSOIL – brown silty clay topsoil with some rootlets	297200	6176900	paddock
E23	20/5/10	TOPSOIL – brown silty clay topsoil with some rootlets	297200	6176800	paddock
E24	24/5/10	CLAY – brown clay with some sand and rootlets	297196	6176696	near dam
E25	24/5/10	TOPSOIL – brown clay topsoil with some gravel and rootlets	297200	6176600	paddock
E26	24/5/10	TOPSOIL – brown silty clay topsoil with some rootlets	297200	6176500	paddock
E27	24/5/10	TOPSOIL – brown silty clay topsoil with some rootlets	297200	6176400	paddock
E28	24/5/10	TOPSOIL – brown silty clay topsoil with some rootlets	297200	6176300	paddock
E29	24/5/10	TOPSOIL - brown silty clay topsoil with some rootlets	297200	6176200	paddock
E30	24/5/10	TOPSOIL - brown silty clay topsoil with some rootlets	297200	6176100	paddock
E31	24/5/10	FILLING – brown gravelly clay filling with some silt and brick fragments	297200	6176000	track
E32	24/5/10	TOPSOIL – brown silty clay topsoil with some rootlets	297200	6175900	island within dam
E33	24/5/10	TOPSOIL – brown silty clay topsoil with some rootlets	297201	6175815	near creek edge
F11	17/5/10	TOPSOIL – brown silty clay topsoil with some rootlets	297300	6178000	paddock
F12	17/5/10	TOPSOIL – brown silty clay topsoil with some rootlets	297300	6177900	paddock
F13	17/5/10	TOPSOIL – brown silty clay topsoil	297300	6177800	paddock
F14	17/5/10	TOPSOIL – brown silty clay topsoil with some rootlets	297300	6177700	paddock
F15	17/5/10	TOPSOIL – brown silty clay topsoil with some rootlets	297300	6177600	paddock
F16	17/5/10	TOPSOIL – brown silty clay topsoil with some rootlets	297300	6177500	paddock



# SAMPLE RECORD

DP ID	DATE	DESCRIPTION	EASTING	NORTHING	COMMENTS
F17	17/5/10	TOPSOIL – brown silty clay topsoil with some rootlets	297300	6177400	paddock
F18	19/5/10	TOPSOIL – brown silty clay topsoil with some rootlets	297300	6177300	paddock
F19	19/5/10	TOPSOIL – brown silty clay topsoil with some rootlets	297300	6177200	paddock
F20	21/5/10	TOPSOIL – brown silty clay topsoil with some rootlets	297300	6177100	near track
F21	21/5/10	TOPSOIL – brown silty clay topsoil with some rootlets	297300	6177000	paddock
F22	20/5/10	TOPSOIL – brown silty clay topsoil with some rootlets	297300	6176900	paddock
F23	20/5/10	SILTY SAND – light brown silty sand	297300	6176800	paddock
F24	24/5/10	SAND – brown sand with trace clay inclusions and organic matter	297300	6176700	near dam
F25	24/5/10	FILLING – brown slightly gravelly clay filling with some rootlets	297339	6176567	edge of dam
F26	24/5/10	FILLING – brown silty clay filling with some rootlets and organic matter	297300	6176500	on mound, textile layer beneath surface
F27	24/5/10	FILLING – brown silty clay filling and organic matter	297300	6176400	near embankment
F28	24/5/10	TOPSOIL – brown silty clay topsoil with some rootlets and organic matter	297300	6176300	paddock
F29	24/5/10	FILLING – grey clayey silt filling with some sand (possible ash)	297300	6176200	ash pond
F30	24/5/10	CLAY – grey clay with some organic matter	297289	6176116	edge of dam
F32	24/5/10	CLAY – brown clay with some organic matter and rootlets	297322	6175846	edge of dam
F33	24/5/10	TOPSOIL – brown silty clay topsoil with some rootlets	297300	6175800	near creek
G11	17/5/10	TOPSOIL – brown silty clay topsoil with some rootlets	297400	6178000	paddock
G12	17/5/10	TOPSOIL – brown silty clay topsoil with some rootlets	297400	6177900	paddock
G13	17/5/10	TOPSOIL – brown silty clay topsoil with some rootlets	297400	6177800	paddock
G14	17/5/10	TOPSOIL – brown silty clay topsoil with some rootlets	297400	6177700	paddock
G15	17/5/10	TOPSOIL – brown silty clay topsoil with some rootlets	297400	6177600	paddock
G16	17/5/10	TOPSOIL – brown silty clay topsoil with some rootlets	297400	6177500	paddock
G17	17/5/10	TOPSOIL – brown silty clay topsoil with some rootlets	297400	6177400	paddock
G18	19/5/10	TOPSOIL – brown silty clay topsoil with some rootlets	297400	6177300	paddock
G19	19/5/10	TOPSOIL – brown silty clay topsoil with some rootlets	297400	6177200	paddock
G20	21/5/10	TOPSOIL – brown silty clay topsoil with some rootlets	297400	6177100	near track
G21	21/5/10	TOPSOIL – brown silty clay topsoil with some rootlets	297380	6176983	near creek
G22	20/5/10	TOPSOIL – brown silty clay topsoil with some rootlets	297400	6176900	paddock
G23	20/5/10	TOPSOIL – brown silty clay topsoil	297400	6176800	paddock
G24	24/5/10	FILLING – black brown gravelly (coalwash) silt filling	297400	6176700	ash pond
G25	24/5/10	FILLING – grey clay filling	297400	6176600	paddock
G26	28/5/10	FILLING – brown gravelly (slag) clay filling	297400	6176500	ash pond
G27	28/5/10	FILLING – brown gravelly (slag) clay filling	297400	6176400	ash pond



# SAMPLE RECORD

DP ID	DATE	DESCRIPTION	EASTING	NORTHING	COMMENTS
G28	28/5/10	TOPSOIL – brown clay topsoil with some rootlets	297400	6176300	near dam
G29	28/5/10	TOPSOIL – brown clay topsoil with some rootlets	297400	6176200	near dam
G32	24/5/10	FILLING – brown clay filling with some rootlets and trave gravel	297401	6175829	embankment near creek
G33	24/5/10	TOPSOIL – brown clay topsoil with some rootlets	297400	6175800	near creek
H12	17/5/10	TOPSOIL – brown silty clay topsoil with some rootlets	297500	6177900	paddock
H13	17/5/10	TOPSOIL – brown silty clay topsoil with trace rootlets	297500	6177800	exposed soil in paddock
H14	17/5/10	TOPSOIL – brown silty clay topsoil with some rootlets	297500	6177700	paddock
H15	17/5/10	TOPSOIL – brown silty clay topsoil with some rootlets	297500	6177600	paddock
H16	17/5/10	TOPSOIL – brown silty clay topsoil with some rootlets	297500	6177500	paddock
H17	17/5/10	TOPSOIL – brown silty clay topsoil with some rootlets	297500	6177400	paddock
H18	19/5/10	TOPSOIL – brown silty clay topsoil with some rootlets	297500	6177300	paddock
H19	17/5/10	TOPSOIL – brown silty clay topsoil with some rootlets	297500	6177200	paddock
H20	17/5/10	TOPSOIL – brown silty clay topsoil with some rootlets	297500	6177100	paddock
H21	20/5/10	FILLING – dark brown silty clay filling	297518	6176993	road embankment
H22	20/5/10	TOPSOIL – brown silty clay topsoil with some rootlets	297500	6176900	long grass
H23	20/5/10	SANDY CLAY – orange and grey sandy clay	297500	6176800	long grass
H24	24/5/10	FILLING – black clay filling with some gravel (coal wash) and silt	297500	6176700	ash pond
H25	24/5/10	FILLING – brown gravelly (slag) clay filling with some silt	297500	6176600	paddock
H26	28/5/10	FILLING – brown clay filling with some gravel (slag)	297500	6176500	ash pond
H27	28/5/10	FILLING – brown clay filling with some gravel (slag)	297500	6176400	ash pond
H28	28/5/10	FILLING – brown gravelly (slag) clay filling with some rootlets	297500	6176300	ash pond
H29	28/5/10	FILLING – brown clay filling with some gravel	297500	6176200	paddock
H30	28/5/10	TOPSOIL – brown clay topsoil with some rootlets and organic matter	297519	6176130	near edge of dam
H32	28/5/10	TOPSOIL – brown clay topsoil with some rootlets	297492	6175886	edge of dam
H33	24/5/10	FILLING – brown gravelly (concrete rubble, slag) clay filling with some silt	297500	6175800	track
I12	17/5/10	TOPSOIL – brown silty clay topsoil with some rootlets	297600	6177900	paddock
I13	17/5/10	TOPSOIL – brown silty clay topsoil with some rootlets and trace gravel	297600	6177800	paddock
I14	17/5/10	TOPSOIL – brown silty clay topsoil with some rootlets	297600	6177700	paddock
I15	17/5/10	TOPSOIL – brown silty clay topsoil with some rootlets	297600	6177600	paddock
I16	17/5/10	TOPSOIL – brown silty clay topsoil with some rootlets	297600	6177500	paddock
I17	17/5/10	TOPSOIL – brown silty clay topsoil with some rootlets	297600	6177400	paddock
I18	19/5/10	TOPSOIL – brown silty clay topsoil with some rootlets	297600	6177300	paddock



# SAMPLE RECORD

DP ID	DATE	DESCRIPTION	EASTING	NORTHING	COMMENTS
I19	17/5/10	TOPSOIL – brown silty clay topsoil with some rootlets	297600	6177200	paddock
I20	19/5/10	TOPSOIL – brown silty clay topsoil with some rootlets	297600	6177100	nature strip
I21	20/5/10	TOPSOIL – dark brown silty clay topsoil with some rootlets	297600	6177000	paddock
I22	20/5/10	TOPSOIL – brown silty clay topsoil with some rootlets	297600	6176900	long grass
I23	20/5/10	TOPSOIL – brown clay topsoil with some sand and rootlets	297600	6176800	long grass
I24	24/5/10	TOPSOIL – brown clay topsoil with some rootlets	297600	6176700	paddock
I25	24/5/10	FILLING – brown gravelly (slag) clay filling with some silt and rootlets	297600	6176600	paddock
I26	28/5/10	FILLING – dark brown slightly gravelly (slag) clay filling	297600	6176500	ash pond
I27	28/5/10	FILLING – dark brown gravelly clay filling	297600	6176400	ash pond
I28	28/5/10	FILLING – dark brown slightly gravelly (slag) clay filling	297600	6176300	ash pond
I29	28/5/10	FILLING – dark brown slightly gravelly (slag) clay filling	297600	6176200	ash pond
I30	28/5/10	FILLING – dark brown slightly gravelly (slag) clay filling	297600	6176100	ash pond
I31	28/5/10	TOPSOIL – grey clay topsoil with some rootlets	297590	6176019	edge of dam
I33	28/5/10	TOPSOIL – brown clay topsoil with some rootlets	297600	6175800	edge of dam
J12	17/5/10	TOPSOIL – brown silty clay topsoil with some rootlets	297678	6177894	edge of lantana forest
J13	17/5/10	TOPSOIL – brown silty clay topsoil with some rootlets	297715	6177812	edge of lantana forest
J14	17/5/10	TOPSOIL – brown silty clay topsoil with some rootlets	297700	6177700	paddock
J15	17/5/10	TOPSOIL – brown silty clay topsoil with some rootlets	297700	6177600	paddock
J16	17/5/10	TOPSOIL – brown silty clay topsoil with some rootlets	297700	6177500	paddock
J17	17/5/10	TOPSOIL – brown silty clay topsoil with some rootlets	297700	6177400	paddock
J18	19/5/10	TOPSOIL – brown silty clay topsoil with some rootlets	297700	6177300	paddock
J19	17/5/10	TOPSOIL – brown silty clay topsoil with some rootlets	297700	6177200	paddock
J20	19/5/10	TOPSOIL – red-brown silty clay topsoil with some gravel and rootlets	297700	6177100	nature strip
J21	19/5/10	TOPSOIL – brown slightly silty clay topsoil with some sand and rootlets	297700	6177000	edge of creek
J22	20/5/10	TOPSOIL – brown silty clay topsoil with some rootlets	297700	6176900	long grass
J23	20/5/10	FILLING – dark grey sandy gravel filling	297700	6176800	road
J24	24/5/10	FILLING – brown gravelly clay filling	297700	6176700	paddock
J25	24/5/10	FILLING – brown clay filling with some gravel and rootlets	297700	6176600	paddock
J26	26/5/10	FILLING – brown clay filling with some gravel and rootlets	297700	6176500	ash pond
J27	26/5/10	FILLING – brown clay filling with some gravel and rootlets	297700	6176400	ash pond
J28	26/5/10	FILLING – brown clay filling with some gravel and rootlets	297700	6176300	ash pond
J29	26/5/10	FILLING – brown clay filling with some gravel and rootlets	297700	6176200	ash pond



# SAMPLE RECORD

DP ID	DATE	DESCRIPTION	EASTING	NORTHING	COMMENTS
J30	26/5/10	FILLING – brown clay filling with some gravel and rootlets	297700	6176100	ash pond
J31	26/5/10	FILLING – brown slightly gravelly clay filling with some rootlets	297700	6176000	track
J32	26/5/10	FILLING – brown slightly gravelly clay filling with some rootlets	297700	6175900	track
J33	26/5/10	TOPSOIL – brown clay topsoil with some rootlets	297667	6175802	near creek
K12	17/5/10	TOPSOIL – brown silty clay topsoil with some gravel and rootlets	297800	6177900	paddock
K13	17/5/10	TOPSOIL – brown silty clay topsoil with some gravel and rootlets	297800	6177800	paddock
K14	17/5/10	TOPSOIL – brown silty clay topsoil	297800	6177700	track within Lantana forest
K15	17/5/10	TOPSOIL – brown silty clay topsoil with some rootlets	297800	6177600	paddock
K16	17/5/10	TOPSOIL – brown silty clay topsoil with some rootlets	297800	6177500	paddock
K17	17/5/10	TOPSOIL – brown silty clay topsoil with some rootlets	297800	6177400	paddock
K18	17/5/10	TOPSOIL – brown silty clay topsoil with some rootlets	297800	6177300	paddock
K19	17/5/10	TOPSOIL – brown slightly sandy silty clay topsoil with some gravel (sandstone) and rootlets	297800	6177200	edge of creek
K20	20/5/10	TOPSOIL – brown silty clay topsoil with some rootlets	297800	6177100	paddock
K21	20/5/10	TOPSOIL – brown silty clay topsoil with some rootlets	297800	6177000	paddock
K22	20/5/10	CLAY – brown slightly silty clay with some rootlets	297800	6176900	paddock
K23	20/5/10	FILLING – dark grey sandy gravel filling	297791	6176790	edge of creek
K24	24/5/10	FILLING – brown gravelly clay filling	297800	6176700	embankment
K25	24/5/10	FILLING – brown gravelly clay filling with some rootlets	297800	6176600	paddock
K26	26/5/10	FILLING – brown gravelly clay filling with some rootlets	297800	6176500	track
K27	26/5/10	FILLING – brown gravelly clay filling with some rootlets	297800	6176400	edge of track
K28	26/5/10	TOPSOIL – brown silty clay topsoil with some rootlets	297800	6176300	near creek
K29	26/5/10	TOPSOIL – brown silty clay topsoil with some rootlets	297800	6176200	paddock
K30	28/5/10	TOPSOIL – brown silty clay topsoil with some rootlets	297800	6176100	paddock
K31	28/5/10	TOPSOIL – brown silty clay topsoil with some rootlets	297800	6176000	paddock
K32	28/5/10	TOPSOIL – brown silty clay topsoil with some rootlets	297800	6175900	paddock
K33	28/5/10	TOPSOIL – brown clay topsoil with some rootlets and organic matter	297800	6175800	paddock
K34	28/5/10	TOPSOIL – brown clay topsoil with some organic matter	297800	6175700	near creek
L13	17/5/10	TOPSOIL – brown silty clay with some gravel (sandstone) and rootlets	297900	6177800	paddock
L14	17/5/10	TOPSOIL – brown silty clay topsoil with some rootlets	297900	6177700	paddock
L15	17/5/10	TOPSOIL – brown silty clay topsoil with some rootlets	297900	6177600	paddock
L16	17/5/10	TOPSOIL – brown silty clay topsoil with some rootlets	297900	6177500	paddock
L17	17/5/10	TOPSOIL – brown silty clay topsoil with some rootlets	297900	6177400	paddock



# SAMPLE RECORD

DP ID	DATE	DESCRIPTION	EASTING	NORTHING	COMMENTS
L18	17/5/10	TOPSOIL – brown silty clay topsoil with some rootlets	297900	6177300	paddock
L20	20/5/10	TOPSOIL – brown silty clay topsoil with some rootlets	297900	6177100	paddock
L21	20/5/10	TOPSOIL – brown silty clay topsoil with some rootlets	297900	6177000	paddock
L22	20/5/10	TOPSOIL – brown silty clay topsoil with some rootlets	297900	6176900	paddock
L23	20/5/10	TOPSOIL – brown silty clay topsoil with some rootlets	297900	6176800	paddock
L24	20/5/10	TOPSOIL – brown silty clay topsoil with some rootlets	297900	6176700	paddock
L25	28/5/10	TOPSOIL – brown silty clay topsoil with some rootlets	297900	6176600	Lantana forest
L26	28/5/10	TOPSOIL – brown silty clay topsoil with some rootlets	297900	6176500	Casuarina forest
L27	28/5/10	FILLING – brown silty clay filling with some gravel and rootlets	297900	6176400	Lantana forest
L28	26/5/10	TOPSOIL – brown silty clay topsoil with some rootlets	297887	6176279	edge of Lantana forest
L29	26/5/10	TOPSOIL – brown silty clay topsoil with some rootlets	297900	6176200	paddock
L30	28/5/10	TOPSOIL – brown clay topsoil with some rootlets and organic matter	297900	6176100	paddock
L31	28/5/10	TOPSOIL – brown clay topsoil with some rootlets and organic matter	297900	6176000	paddock
L32	28/5/10	TOPSOIL – brown clay topsoil with some rootlets and organic matter	297900	6175900	paddock
L33	28/5/10	TOPSOIL – brown clay topsoil with some rootlets and organic matter	297900	6175800	paddock
L34	28/5/10	TOPSOIL – brown clay topsoil with some rootlets	297900	6175700	paddock
M10	19/5/10	TOPSOIL – brown silty clay topsoil with some rootlets	298000	6178100	paddock
M11	19/5/10	FILLING – orange brown silty clay filling with some gravel	298000	6178000	small soil stockpile within paddock
M12	17/5/10	TOPSOIL – brown silty clay topsoil	297977	6177935	edge of Lantana forest
M13	17/5/10	TOPSOIL – brown silty clay topsoil with some leaf litter	297986	6177786	forest
M14	17/5/10	TOPSOIL – brown silty clay topsoil with some rootlets	298000	6177700	paddock
M15	17/5/10	TOPSOIL – brown silty clay topsoil with some rootlets	298000	6177600	paddock
M16	17/5/10	TOPSOIL – brown silty clay topsoil with some rootlets	298000	6177500	paddock
M17	17/5/10	TOPSOIL – brown silty clay topsoil with some rootlets	298000	6177400	paddock
M18	17/5/10	TOPSOIL – brown silty clay topsoil with some rootlets	298000	6177300	paddock
M19	20/5/10	TOPSOIL – brown silty clay topsoil with some rootlets	298000	6177200	paddock
M20	20/5/10	FILLING – dark grey sandy gravel filling	298000	6177100	road
M21	20/5/10	CLAY – dark brown clay	298000	6177000	mid flat adjacent to dam
M22	20/5/10	TOPSOIL – brown silty clay topsoil with some rootlets	298000	6176900	paddock
M23	20/5/10	TOPSOIL – brown silty clay topsoil with some rootlets	298000	6176800	paddock



# SAMPLE RECORD

DP ID	DATE	DESCRIPTION	EASTING	NORTHING	COMMENTS
M24	20/5/10	TOPSOIL – brown silty clay topsoil with some sand and rootlets	298992	6176708	edge of creek
M25	28/5/10	TOPSOIL – brown silty clay topsoil with some rootlets	298000	6176600	edge of Casuarina forest
M26	28/5/10	TOPSOIL – brown silty clay topsoil with some rootlets	297992	6176506	Lantana forests
M27	28/5/10	TOPSOIL – brown silty sand topsoil with some rootlets	298000	6176400	Casuarina forest
M28	26/5/10	TOPSOIL – brown silty clay topsoil with some rootlets	298000	6176300	paddock
M29	28/5/10	TOPSOIL – brown silty clay topsoil with some rootlets and organic matter	298000	6176200	paddock
M30	28/5/10	TOPSOIL – brown silty clay topsoil with some rootlets and organic matter	298000	6176100	paddock
M31	28/5/10	TOPSOIL – brown silty clay topsoil with some rootlets and organic matter	298000	6176000	paddock
M32	28/5/10	TOPSOIL – brown silty clay topsoil with some rootlets and organic matter	298000	6175900	paddock
M33	28/5/10	TOPSOIL – brown silty clay topsoil with some rootlets and organic matter	298000	6175800	near creek
M34	28/5/10	TOPSOIL – brown silty clay topsoil with some rootlets and organic matter	298000	6175700	near creek
N08	19/5/10	TOPSOIL – brown silty clay topsoil with some rootlets	298100	6178300	poisoned Lantana forest
N09	13/5/10	TOPSOIL – brown silty clay topsoil with some rootlets	298049	6178205	poisoned Lantana forest
N10	13/5/10	TOPSOIL – brown silty clay topsoil with some rootlets	298100	6178100	paddock
N11	17/5/10	TOPSOIL – brown silty clay topsoil with some rootlets	298100	6178000	paddock
N12	17/5/10	TOPSOIL – brown silty clay topsoil with some rootlets	298091	6177954	edge of Lantana forest
N13	17/5/10	TOPSOIL – brown silty clay topsoil with some rootlets	298100	6177800	edge of Lantana forest
N14	17/5/10	TOPSOIL – brown silty clay topsoil with some rootlets	298100	6177700	paddock
N15	17/5/10	TOPSOIL – brown silty clay topsoil with some rootlets	298100	6177600	paddock
N16	17/5/10	TOPSOIL – brown silty clay topsoil with some rootlets	298100	6177500	paddock
N17	17/5/10	TOPSOIL – brown silty clay topsoil with some rootlets	298100	6177400	paddock
N18	19/5/10	FILLING – grey brown sandy clay filling with some gravel	298100	6177300	Casuarina forest
N19	28/5/10	FILLING – brown silty clay filling with some gravel	298100	6177200	roadway
N20	20/5/10	FILLING – brown silty clay filling with some gravel	298119	6177102	roadway
N21	20/5/10	FILLING – brown clayey sand filling	298078	6176999	paddock
N22	20/5/10	FILLING – brown clayey sand filling	298100	6176900	paddock
N23	20/5/10	TOPSOIL – brown silty clay topsoil with some rootlets	298091	6176801	paddock
N24	20/5/10	TOPSOIL – brown silty clay topsoil with some rootlets	298057	6176730	paddock



# SAMPLE RECORD

DP ID	DATE	DESCRIPTION	EASTING	NORTHING	COMMENTS
N25	28/5/10	TOPSOIL – brown slightly sandy silty clay topsoil with trace rootlets	298093	6176597	edge of creek
N26	28/5/10	TOPSOIL – brown slightly sandy silty clay topsoil with trace rootlets	298100	6176500	Lantana forest
N27	26/5/10	TOPSOIL – brown silty clay topsoil with some rootlets	298100	6176400	paddock
N28	26/5/10	TOPSOIL – brown silty clay topsoil with some rootlets	298100	6176300	paddock
N29	26/5/10	TOPSOIL – brown silty clay topsoil with some rootlets	298100	6176200	paddock
N30	26/5/10	TOPSOIL – brown silty clay topsoil with some rootlets	298100	6176100	paddock
N31	26/5/10	TOPSOIL – brown silty clay topsoil with some rootlets	298100	6176000	paddock
N32	26/5/10	TOPSOIL – brown silty clay topsoil with some rootlets	298100	6175900	paddock
N33	28/5/10	TOPSOIL – brown clay topsoil with some rootlets	298100	6175800	paddock
N34	28/5/10	TOPSOIL – brown clay topsoil with some rootlets	298100	6175700	paddock
O07	13/5/10	TOPSOIL – brown clay topsoil with some rootlets	298196	6178408	poisoned Lantana forest
O08	13/5/10	TOPSOIL – brown silty clay topsoil with some leaf litter	298243	6178266	Lantana forest
O09	13/5/10	TOPSOIL – brown clay topsoil with some rootlets	298238	6178195	edge of Lantana forest
O10	13/5/10	TOPSOIL – brown clay topsoil with some rootlets	298192	6178044	edge of Lantana forest
O11	17/5/10	TOPSOIL – brown clay topsoil with some rootlets	298200	6178000	paddock
O12	17/5/10	TOPSOIL – brown silty clay topsoil	298200	6177900	track within Lantana forest
O13	17/5/10	TOPSOIL – brown silty clay topsoil with some rootlets	298200	6177800	paddock
O14	17/5/10	TOPSOIL – brown silty clay topsoil with some rootlets	298200	6177700	paddock
O15	17/5/10	TOPSOIL – brown silty clay topsoil with some rootlets	298200	6177600	paddock
O16	17/5/10	TOPSOIL – brown silty clay topsoil with some rootlets	298200	6177500	paddock
O17	17/5/10	TOPSOIL – brown silty clay topsoil with some rootlets	298200	6177400	paddock
O18	21/5/10	TOPSOIL – brown silty clay topsoil with some rootlets and trace gravel	298200	6177300	edge of road
O19	20/5/10	FILLING – grey sandy silty gravel filling	298200	6177200	Casuarina forest
O20	20/5/10	FILLING – grey sandy silt filling	298146	6177066	Casuarina forest
O21	20/5/10	FILLING – grey sandy silt filling with some gravel	298200	6177000	Lantana forest
O22	20/5/10	FILLING – brown silty clay filling with some gravel and rootlets	298190	6176896	edge of road
O23	28/5/10	FILLING – brown silty clay filling with some gravel and rootlets	298200	6176800	edge of road
O24	20/5/10	FILLING – brown silty clay filling with some gravel and rootlets	298200	6176700	long grass
O25	20/5/10	FILLING – brown silty sandy clay filling	298200	6176600	edge of road
O26	20/5/10	TOPSOIL – brown silty sandy clay topsoil with some rootlets	298200	6176500	bank of creek
O27	21/5/10	TOPSOIL – brown silty clay topsoil with some rootlets	298200	6176400	Casuarina forest
O28	21/5/10	TOPSOIL – brown silty sand topsoil with some rootlets	298200	6176300	edge of Casuarina forest



# SAMPLE RECORD

DP ID	DATE	DESCRIPTION	EASTING	NORTHING	COMMENTS
O29	21/5/10	TOPSOIL – brown silty clay topsoil with some rootlets and organic matter	298200	6176200	paddock
O30	21/5/10	TOPSOIL – brown silty clay topsoil with some rootlets	298200	6176100	paddock
O31	21/5/10	TOPSOIL – brown clay topsoil with some sand and rootlets	298200	6176000	paddock
O32	21/5/10	TOPSOIL – brown silty clay topsoil with some rootlets	298200	6175900	paddock
O33	21/5/10	TOPSOIL – brown silty clay topsoil with some rootlets	298200	6175800	paddock
O34	21/5/10	TOPSOIL – brown silty clay topsoil with some rootlets	298200	6175700	paddock
O35	21/5/10	SANDY CLAY – brown sandy clay	298200	6175600	reed bed
P06	19/5/10	TOPSOIL – brown silty clay topsoil	298284	6178513	paddock
P07	13/5/10	TOPSOIL – brown silty clay topsoil with some rootlets	298302	6178410	edge of Lantana forest
P08	13/5/10	TOPSOIL – brown silty clay topsoil with some leaf litter	298311	6178304	edge of Lantana forest
P09	13/5/10	TOPSOIL – brown silty clay topsoil with some rootlets	298300	6178200	paddock
P10	13/5/10	TOPSOIL – brown silty clay topsoil with some gravel (siltstone) and rootlets	298300	6178100	paddock
P11	17/5/10	TOPSOIL – brown silty clay topsoil with some rootlets	298300	6178000	paddock
P12	17/5/10	TOPSOIL – brown silty clay topsoil with some rootlets	298300	6177900	paddock
P13	17/5/10	TOPSOIL – brown silty clay topsoil with some rootlets	298300	6177800	paddock
P14	17/5/10	TOPSOIL – brown silty clay topsoil with some rootlets	298300	6177700	paddock
P15	17/5/10	TOPSOIL – brown silty clay topsoil with some rootlets	298300	6177600	paddock
P16	17/5/10	TOPSOIL – brown silty clay topsoil with some rootlets	298300	6177500	paddock
P17	19/5/10	FILLING – dark grey sandy gravel filling	298300	6177400	edge of road
P18	20/5/10	FILLING – brown silty clay filling	298300	6177300	road embankment
P19	20/5/10	FILLING – grey sandy silty gravel filling	298300	6177200	long grass
P20	20/5/10	FILLING – grey silt filling with some gravel	298300	6177100	edge of Lantana forest
P21	20/5/10	FILLING – grey slightly gravelly silt filling	298354	6177016	Lantana forest
P22	20/5/10	FILLING – grey sandy silty gravel filling	298241	6176876	Casuarina forest
P23	20/5/10	FILLING – grey sandy silty gravel filling	298270	6176875	Casuarina forest
P24	20/5/10	FILLING – dark grey sandy gravel filling	298300	6176700	Casuarina forest
P25	20/5/10	FILLING – brown silty clay filling with some gravel	298300	6176600	long grass
P26	20/5/10	FILLING – brown sandy clay and gravel filling	298300	6176500	cleaning within Casuarina forest
P27	21/5/10	TOPSOIL – brown silty clay topsoil with some rootlets	298300	6176400	Melaleuca forest
P28	21/5/10	TOPSOIL – brown silty clay topsoil with some rootlets	298300	6176300	Melaleuca forest
P30	21/5/10	TOPSOIL – brown silty clay topsoil with some rootlets	298300	6176100	edge of track
P31	21/5/10	TOPSOIL – brown silty clay topsoil with some rootlets	298288	6176000	paddock



# SAMPLE RECORD

DP ID	DATE	DESCRIPTION	EASTING	NORTHING	COMMENTS
P32	21/5/10	TOPSOIL – brown silty clay topsoil with some rootlets	298300	6175978	paddock
P33	21/5/10	TOPSOIL – brown silty clay topsoil with some rootlets	298300	6175800	paddock
P34	21/5/10	TOPSOIL – brown sandy clay topsoil with some rootlets	298300	6175700	edge of creek
P35	21/5/10	SANDY CLAY – brown sandy clay	298300	6175600	edge of Lantana forest
P36	21/5/10	TOPSOIL – brown silty sandy clay topsoil with trace rootlets	298300	6175500	Casuarina forest
Q05	19/5/10	TOPSOIL – brown silty clay topsoil with some gravel (siltstone) and rootlets	298400	6178600	paddock
Q06	13/5/10	SILTY CLAY – brown silty clay	298367	6178465	poisoned Lantana forest
Q07	13/5/10	FILLING – brown silty clay filling	298396	6178392	edge of road within forest
Q08	13/5/10	TOPSOIL – brown silty clay topsoil with some rootlets	298402	6178288	edge of Lantana forest
Q09	13/5/10	TOPSOIL – brown silty clay topsoil with some rootlets	298400	6178200	paddock
Q10	13/5/10	TOPSOIL – brown silty clay topsoil with some rootlets	298400	6178100	paddock
Q11	17/5/10	TOPSOIL – brown silty clay topsoil with some rootlets	298400	6178000	paddock
Q12	17/5/10	TOPSOIL – brown silty clay topsoil with some rootlets	298400	6177900	paddock
Q18	20/5/10	FILLING – grey sandy gravel filling	298400	6177300	Eucalypt forest
Q19	20/5/10	FILLING – grey silty gravel filling	298400	6177200	paddock
Q20	20/5/10	FILLING – light grey gravelly silty clay	298400	6177100	paddock
Q21	20/5/10	FILLING – light brown mottled orange clay filling with some gravel (sandstone)	298400	6177000	paddock
Q22	20/5/10	FILLING – light grey gravelly silty clay filling	298442	6176910	forest
Q23	20/5/10	FILLING – light grey gravelly silty clay filling	298449	6176841	forest
Q24	19/5/10	FILLING – grey gravel (coalwash) filling	298425	6176711	forest
Q25	20/5/10	FILLING – light grey gravelly silt filling	298400	6176600	edge of forest
Q26	20/5/10	SILTY CLAY – brown sandy silty clay with some gravel and shell fragments	298400	6176500	creek bed
Q27	21/5/10	TOPSOIL – brown silty clay topsoil with some rootlets	298400	6176400	Casuarina forest
Q28	21/5/10	TOPSOIL – brown silty sandy clay topsoil with some rootlets	298401	6176277	Casuarina forest
Q29	21/5/10	TOPSOIL – brown silty clay topsoil with some rootlets	298422	6176204	Casuarina forest
Q30	21/5/10	TOPSOIL – brown silty clay topsoil with some rootlets	298388	6176062	near track
Q31	21/5/10	TOPSOIL – brown silty clay topsoil with some rootlets	298437	6176033	near track
Q32	21/5/10	TOPSOIL – brown silty clay topsoil with some rootlets	298400	6175900	paddock
Q33	21/5/10	TOPSOIL – brown silty clay topsoil with some rootlets	298400	6175800	paddock
Q34	21/5/10	TOPSOIL – brown sandy silt topsoil with some rootlets	298404	6175681	Casuarina forest
Q35	21/5/10	TOPSOIL – brown silty sand topsoil with some rootlets	298400	6175600	Casuarina forest
Q36	21/5/10	TOPSOIL – brown silty sand topsoil with some clay and rootlets	298400	6175500	Casuarina forest



# SAMPLE RECORD

DP ID	DATE	DESCRIPTION	EASTING	NORTHING	COMMENTS
R04	19/5/10	TOPSOIL – brown silty clay topsoil with some rootlets	298500	6178700	paddock
R05	13/5/10	TOPSOIL – brown silty clay topsoil with some rootlets	298500	6178600	edge of Lantana forest
R06	13/5/10	SILTY CLAY – brown silty clay with some organic matter	298500	6178500	poisoned Lantana forest
R07	13/5/10	TOPSOIL – brown silty clay topsoil with some rootlets	298500	6178400	paddock
R08	13/5/10	TOPSOIL – brown silty clay topsoil with some rootlets	298500	6178300	paddock
R09	13/5/10	TOPSOIL – brown silty clay topsoil with some rootlets	298500	6178200	paddock
R10	13/5/10	TOPSOIL – brown silty clay topsoil with some rootlets	298500	6178100	paddock
R11	17/5/10	TOPSOIL – brown silty clay topsoil with some rootlets	298500	6178000	paddock
R12	17/5/10	TOPSOIL – brown silty clay topsoil with some rootlets	298500	6177900	paddock
R18	19/5/10	SILTY CLAY – brown silty clay with some rootlets	298506	6177310	edge of Lantana forest
R19	19/5/10	SILTY CLAY – brown silty clay with some gravel (siltstone)	298500	6177200	paddock
R20	19/5/10	TOPSOIL – brown silty sand topsoil with some rootlets	298530	6177095	Casuarina forest
R21	19/5/10	FILLING – brown grey sandy clay filling	298561	6176966	edge of Lantana forest
R22	19/5/10	FILLING – brown sandy clay filling with some gravel	298555	6176927	Casuarina forest
R23	20/5/10	FILLING – black gravel (coalwash) filling	298500	6176800	paddock
R24	19/5/10	FILLING – black gravel (coalwash) filling	298500	6176700	forest
R25	20/5/10	FILLING – grey silt filling with some gravel	298500	6176600	forest
R26	20/5/10	FILLING – brown silty clay filling with some rootlets	298500	6176500	road embankment
R27	21/5/10	TOPSOIL – brown silty clay topsoil with some rootlets	298500	6176400	Casuarina forest
R28	21/5/10	TOPSOIL – brown silty clay topsoil with some rootlets	298500	6176300	Casuarina forest
R29	21/5/10	TOPSOIL – brown silty clay topsoil with some rootlets	298500	6176200	Casuarina forest
R30	21/5/10	TOPSOIL – brown silty clay topsoil with some rootlets	298490	6176041	near track
R31	21/5/10	TOPSOIL – brown silty clay topsoil with some organic matter and trace sand	298504	6176025	near track
R32	21/5/10	TOPSOIL – brown silty clay topsoil with some rootlets	298500	6175900	paddock
R33	21/5/10	TOPSOIL – brown silty clay topsoil with some rootlets	298500	6175800	paddock
R34	21/5/10	TOPSOIL – brown sandy clay topsoil with some rootlets	298540	6175620	edge of Lantana forest
R35	21/5/10	TOPSOIL – brown silty sand topsoil with some rootlets	298500	6175600	Casuarina forest
R36	21/5/10	SANDY CLAY – brown sandy clay with some rootlets	298500	6175500	edge of mudflats
S03	19/5/10	TOPSOIL – brown silty clay topsoil with some rootlets	298600	6178800	paddock
S04	13/5/10	TOPSOIL – brown silty clay topsoil with some rootlets	298600	6178700	paddock
S05	13/5/10	TOPSOIL – brown silty clay topsoil with some rootlets	298600	6178600	paddock
S06	13/5/10	TOPSOIL – brown silty clay topsoil with some rootlets	298600	6178500	paddock
S07	13/5/10	SILTY CLAY – brown silty clay	298600	6178400	paddock
S08	13/5/10	TOPSOIL – brown silty clay topsoil with some rootlets	298600	6178300	paddock



# SAMPLE RECORD

DP ID	DATE	DESCRIPTION	EASTING	NORTHING	COMMENTS
S09	13/5/10	TOPSOIL – brown silty clay topsoil with some rootlets	298600	6178200	paddock
S10	13/5/10	TOPSOIL – brown silty clay topsoil with some rootlets	298600	6178100	paddock
S11	17/5/10	TOPSOIL – brown silty clay topsoil with some rootlets	298600	6178000	paddock
S17	19/5/10	TOPSOIL – brown silty clay topsoil with some rootlets	298600	6177400	paddock
S18	19/5/10	TOPSOIL – brown silty clay topsoil	298600	6177300	Casuarina forest
S19	19/5/10	FILLING – grey sandy clayey silt filling	298566	6177199	edge of asbestos disposal soil covering
S20	19/5/10	FILLING – grey gravel filling	298617	6177107	edge of gravel stockpiles
S21	19/5/10	FILLING – brown gravelly clay filling	298600	6177000	Casuarina forest
S22	19/5/10	SANDY CLAY – red brown sandy clay	298600	6176900	Casuarina forest
S23	19/5/10	TOPSOIL – brown silty clay topsoil with trace gravel (sandstone)	298600	6176800	paddock
S24	19/5/10	FILLING – black gravel (coalwash) filling	298600	6176700	forest
S25	20/5/10	FILLING – grey gravelly silt filling	298600	6176600	forest
S26	20/5/10	FILLING – brown silty clay filling with some rootlets	298600	6176500	road embankment
S27	21/5/10	SANDY CLAY – grey sandy clay	298600	6176400	edge of creek
S28	21/5/10	SANDY CLAY – grey sandy clay	298600	6176300	Casuarina forest
S29	21/5/10	TOPSOIL – brown silty sandy clay topsoil with some rootlets	298600	6176200	Casuarina forest
S30	21/5/10	TOPSOIL – brown silty clay topsoil with some sand, organic matter and rootlets	298572	6176052	edge of Lantana forest
S31	21/5/10	TOPSOIL – brown silty clay topsoil with some organic matter	298600	6176000	near track
S32	21/5/10	TOPSOIL – brown silty clay topsoil with some organic matter	298600	6175900	paddock
S33	21/5/10	TOPSOIL – brown silty clay topsoil with some rootlets	298600	6175800	long grass
S34	21/5/10	TOPSOIL – brown sandy clay topsoil with some rootlets	298604	6175707	edge of Lantana forest
S35	21/5/10	TOPSOIL – brown silty sand topsoil with some clay	298651	6175598	Lantana forest
S36	21/5/10	SILTY SAND – brown grey silty sand with some clay	298600	6175500	edge of mudflats
T02	19/5/10	TOPSOIL – brown silty clay topsoil with some rootlets	298700	6178900	paddock
T03	13/5/10	TOPSOIL – brown silty clay topsoil with some rootlets	298700	6178800	paddock
T04	13/5/10	TOPSOIL – brown silty clay topsoil with some rootlets	298700	6178700	paddock
T05	13/5/10	TOPSOIL – brown silty clay topsoil with some rootlets	298700	6178600	paddock
T06	13/5/10	SILTY CLAY – brown silty clay	298700	6178500	forest
T07	13/5/10	TOPSOIL – brown silty clay topsoil with some rootlets	298700	6178400	paddock
T08	13/5/10	TOPSOIL – brown silty clay topsoil with some rootlets	298700	6178300	paddock
T09	13/5/10	TOPSOIL – brown silty clay topsoil with some rootlets	298700	6178200	paddock
T10	13/5/10	TOPSOIL – brown silty clay topsoil with some rootlets	298700	6178100	paddock
T11	17/5/10	TOPSOIL – brown silty clay topsoil with some rootlets	298700	6178000	paddock



# SAMPLE RECORD

DP ID	DATE	DESCRIPTION	EASTING	NORTHING	COMMENTS
T17	19/5/10	TOPSOIL – dark brown silty clay topsoil	298700	6177400	paddock
T18	19/5/10	TOPSOIL – brown silty clay topsoil with some rootlets	298706	6177310	paddock
T19	19/5/10	FILLING – grey brown gravelly clay filling	298700	6177200	asbestos disposal soil covering
T20	19/5/10	FILLING – grey silt filling	298700	6177100	filled embankment
T21	19/5/10	FILLING – grey silt filling	298756	6177052	Eucalypt forest
T22	19/5/10	TOPSOIL – brown silty clay topsoil with some rootlets	298685	6176888	edge of Lantana forest
T23	19/5/10	TOPSOIL – brown slightly sandy silty clay topsoil with trace rootlets	298700	6176800	paddock
T24	20/5/10	FILLING – grey sandy gravel filling	298718	6176692	Lantana forest
T25	20/5/10	FILLING – grey sandy gravel filling	298700	6176600	Casuarina forest
T26	20/5/10	FILLING – grey sandy gravel filling	298700	6176500	road
T27	21/5/10	SANDY CLAY – grey sandy clay	298709	6176384	edge of creek
T28	21/5/10	SANDY CLAY – brown and grey sandy clay with some rootlets	298700	6176300	Spinifex grass
T29	21/5/10	SANDY CLAY – brown and grey sandy clay with some rootlets	298700	6176200	Spinifex grass
T30	21/5/10	TOPSOIL – brown silty clay topsoil with some organic matter	298710	6176083	Casuarina forest
T31	21/5/10	TOPSOIL – brown silty clay topsoil with some organic matter	298700	6176000	clearing within forest
T32	21/5/10	TOPSOIL – brown silty clay topsoil with some organic matter	298705	6175882	near creek
T33	21/5/10	TOPSOIL – brown silty clay topsoil with some rootlets	298700	6175800	long grass
T34	21/5/10	TOPSOIL – dark brown silty sand with some rootlets	298700	6175700	long grass
U03	13/5/10	TOPSOIL – brown silty clay topsoil with some rootlets	298800	6178800	paddock
U04	13/5/10	TOPSOIL – brown silty clay topsoil with some rootlets and trace gravel (siltstone)	298800	6178700	paddock
U05	13/5/10	TOPSOIL – brown silty clay topsoil with some rootlets	298800	6178600	paddock
U06	13/5/10	TOPSOIL – brown silty clay topsoil with some gravel and rootlets	298800	6178500	paddock
U07	13/5/10	TOPSOIL – brown silty clay topsoil with some rootlets	298800	6178400	paddock
U08	13/5/10	TOPSOIL – brown silty clay topsoil with some rootlets	298800	6178300	paddock
U09	13/5/10	TOPSOIL – brown silty clay topsoil with some rootlets	298800	6178200	paddock
U10	13/5/10	TOPSOIL – brown silty clay topsoil with some rootlets	298800	6178100	paddock
U19	19/5/10	SILTY CLAY – grey sandy silty clay	298800	6177200	creek bed
U20	19/5/10	FILLING – grey gravel filling	298800	6177100	road embankment
U21	19/5/10	FILLING – brown grey sandy gravel filling	298820	6177002	edge of road
U22	19/5/10	FILLING – grey sandy gravel filling	298811	6176921	edge of road
U23	20/5/10	FILLING – grey sandy gravel filling	298798	6176805	edge of road
U24	19/5/10	FILLING – grey sandy silt filling with some rootlets	298800	6176700	ash pond



# SAMPLE RECORD

DP ID	DATE	DESCRIPTION	EASTING	NORTHING	COMMENTS
U25	19/5/10	FILLING - grey sandy silt filling	298800	6176600	Casuarina forest
U26	19/5/10	FILLING - grey sandy silt filling with some rootlets	298800	6176500	Casuarina forest
U27	20/5/10	FILLING - brown sandy clay and gravel filling	298813	6176443	Lantana forest
U28	21/5/10	CLAY - brown slightly sandy clay	298800	6176300	swamp grass
U29	21/5/10	CLAY - brown slightly sandy clay	298800	6176200	Spinifex grass
U30	21/5/10	TOPSOIL - brown silty sandy clay topsoil with some rootlets and organic matter	298800	6176100	near creek
U31	21/5/10	TOPSOIL - brown silty clay topsoil with some rootlets	298800	6176000	clearing within forest
U32	21/5/10	TOPSOIL - dark brown silty sand with some rootlets	298800	6175900	paddock
V04	13/5/10	SILTY CLAY - brown silty clay with some gravel	298899	6178674	paddock
V05	13/5/10	TOPSOIL - brown silty clay topsoil with some rootlets	298900	6178600	paddock
V06	13/5/10	TOPSOIL - brown silty clay topsoil with some rootlets	298900	6178500	paddock
V07	13/5/10	TOPSOIL - brown silty clay topsoil with some rootlets	298900	6178400	paddock
V08	13/5/10	TOPSOIL - brown silty clay topsoil with some rootlets	298900	6178300	paddock
V09	13/5/10	TOPSOIL - brown silty clay topsoil with some rootlets	298909	6178213	edge of forest
V10	13/5/10	TOPSOIL - brown silty clay topsoil with some rootlets	298900	6178100	paddock
V21	19/5/10	TOPSOIL - red brown slightly sandy silty clay	298840	6176947	edge of road
V23	19/5/10	TOPSOIL - brown silty clay topsoil	298900	6176800	Casuarina forest
V24	19/5/10	FILLING - grey sandy silt filling	298900	6176700	ash pond
V25	19/5/10	FILLING - grey sandy gravel filling	298900	6176600	road
V26	19/5/10	FILLING - grey sandy silt filling	298900	6176500	ash pond
V27	20/5/10	FILLING - dark grey sandy gravel filling	298900	6176400	Lantana forest
V28	21/5/10	TOPSOIL - brown sandy clay topsoil with some rootlets	298900	6176300	long grass
V29	21/5/10	CLAY - brown and grey slightly sandy clay	298900	6176200	swamp grass
V30	21/5/10	TOPSOIL - brown silty clay topsoil with some rootlets	298900	6176100	clearing
W01	19/5/10	TOPSOIL - brown silty clay topsoil with some rootlets	299000	6179000	paddock
W04	12/5/10	TOPSOIL - brown sandy clay topsoil with some rootlets	299000	6178700	paddock
W05	12/5/10	FILLING - brown sandy gravelly (sandstone) clay filling	299000	6178600	embankment around dam
W06	13/5/10	FILLING - brown silty clay with some rootlets	299000	6178500	paddock
W07	13/5/10	TOPSOIL - brown silty clay topsoil with some rootlets	299000	6178400	paddock
W08	13/5/10	TOPSOIL - brown silty clay topsoil with some rootlets	299000	6178300	paddock
W09	13/5/10	TOPSOIL - brown silty clay topsoil with some rootlets	299000	6178200	paddock
W10	13/5/10	TOPSOIL - brown silty clay topsoil with some rootlets	299000	6178100	paddock
W24	20/5/10	FILLING - grey silty clay filling with trace gravel	299000	6176700	paddock
W25	19/5/10	FILLING - grey sandy silt filling	299000	6176600	Casuarina forest



# SAMPLE RECORD

DP ID	DATE	DESCRIPTION	EASTING	NORTHING	COMMENTS
W26	19/5/10	FILLING – grey sandy silt filling	299000	6176500	ash pond
W27	20/5/10	FILLING – brown sandy clay filling with some gravel	299000	6176400	edge of road
W28	21/5/10	SAND – brown slightly clayey sand with some rootlets	298971	6176284	edge of creek
W29	21/5/10	SAND – brown sand with some organic matter	299000	6176200	edge of forest
X02	12/5/10	TOPSOIL – brown silty clay topsoil with some rootlets	299100	6178900	paddock
X03	12/5/10	TOPSOIL – brown silty clay topsoil with some rootlets	299100	6178800	paddock
X04	12/5/10	FILLING – brown sandy clay filling with some gravel and rootlets	299100	6178700	paddock
X05	12/5/10	TOPSOIL – brown sandy clay topsoil with some rootlets	299100	6178600	paddock
X06	13/5/10	TOPSOIL – brown silty clay topsoil with some rootlets	299100	6178500	paddock
X07	13/5/10	TOPSOIL – brown silty clay topsoil with some gravel (siltstone) and rootlets	299100	6178400	paddock
X08	13/5/10	TOPSOIL – brown silty clay topsoil with some rootlets	299100	6178300	paddock
X09	13/5/10	TOPSOIL – brown silty clay topsoil with some rootlets	299100	6178200	paddock
X10	13/5/10	TOPSOIL – brown silty clay topsoil with some rootlets	299100	6178100	paddock
X11	13/5/10	FILLING – brown silty clay filling with some gravel (sandstone) and rootlets	299100	6178000	embankment
X25	20/5/10	TOPSOIL – slightly sandy brown silty clay topsoil with some rootlets	299100	6176600	paddock
X26	20/5/10	TOPSOIL – brown silty clay topsoil with some sand and rootlets	299100	6176500	long grass
X27	20/5/10	TOPSOIL – brown silty clay topsoil with some rootlets	299100	6176400	paddock
X28	20/5/10	SAND – brown and white sand	299118	6176323	foreshore
Y03	12/5/10	TOPSOIL – brown silty clay topsoil with some rootlets	299200	6178800	paddock
Y04	12/5/10	TOPSOIL – brown silty clay topsoil with some rootlets	299206	6178699	edge of dam
Y05	12/5/10	TOPSOIL – brown silty clay topsoil with some rootlets	299200	6178600	paddock
Y06	13/5/10	TOPSOIL – brown silty clay topsoil with some rootlets	299200	6178500	paddock
Y07	13/5/10	TOPSOIL – dark brown silty clay topsoil with some rootlets	299200	6178400	paddock
Y08	13/5/10	TOPSOIL – brown silty clay topsoil with some rootlets	299200	6178300	paddock
Y09	13/5/10	SILTY CLAY – brown silty clay with some rootlets	299200	6178200	paddock
Y10	19/5/10	TOPSOIL – brown silty clay topsoil with some rootlets	299200	6178100	scrubland
Y25	20/5/10	SAND – brown sand with some shell fragments and rootlets	299143	61765968	paddock
Y26	20/5/10	TOPSOIL – brown silty clay topsoil with some rootlets	299200	6176500	paddock
Y27	20/5/10	TOPSOIL – brown slightly silty clay topsoil with some rootlets	299200	6176400	paddock
Z04	12/5/10	TOPSOIL – brown silty clay topsoil with some rootlets	299300	6178700	paddock
Z05	12/5/10	TOPSOIL – brown silty clay topsoil with some rootlets	299300	6178600	paddock
Z06	12/5/10	TOPSOIL – brown silty clay topsoil with some rootlets	299300	6178500	paddock



# SAMPLE RECORD

DP ID	DATE	DESCRIPTION	EASTING	NORTHING	COMMENTS
Z07	13/5/10	TOPSOIL -- brown silty clay topsoil with some rootlets	299300	6178400	paddock
Z08	13/5/10	TOPSOIL -- brown silty clay topsoil with some rootlets	299300	6178300	paddock
Z26	20/5/10	TOPSOIL -- brown silty sandy clay topsoil with some gravel (siltstone) and rootlets	299285	6176496	paddock
AA5	12/5/10	TOPSOIL -- brown silty clay topsoil with some rootlets	299400	6178600	paddock
AA6	12/5/10	TOPSOIL -- brown silty clay topsoil with some rootlets	299400	6178500	paddock
AA7	12/5/10	TOPSOIL -- brown silty clay topsoil with some rootlets	299400	6178400	paddock
AA8	12/5/10	TOPSOIL -- brown silty clay topsoil with some rootlets	299400	6178300	paddock
AA9	13/5/10	TOPSOIL -- brown silty clay topsoil with some rootlets	299400	6178200	paddock
AB5	12/5/10	TOPSOIL -- brown silty clay topsoil with some rootlets	299500	6178600	paddock
AB6	12/5/10	TOPSOIL -- brown silty clay topsoil with some rootlets	299500	6178500	paddock
AB7	12/5/10	TOPSOIL -- brown silty clay topsoil with some rootlets	299500	6178400	paddock
AB8	12/5/10	TOPSOIL -- brown silty clay topsoil with some rootlets	299500	6178300	paddock
AB9	13/5/10	TOPSOIL -- brown silty clay topsoil with some rootlets	299500	6178200	paddock
AC5	12/5/10	TOPSOIL -- brown silty clay topsoil with some rootlets	299596	6178595	paddock
AC6	12/5/10	TOPSOIL -- brown silty clay topsoil with some rootlets	299600	6178500	paddock
AC7	12/5/10	TOPSOIL -- brown silty clay topsoil with some rootlets	299600	6178400	paddock
AC8	12/5/10	TOPSOIL -- brown silty clay topsoil with some rootlets	299600	6178300	paddock
AC9	13/5/10	TOPSOIL -- brown silty clay topsoil with some rootlets	299600	6178200	paddock
AD7	12/5/10	TOPSOIL -- brown silty clay topsoil with some rootlets	299700	6178400	paddock
AD8	12/5/10	TOPSOIL -- brown silty clay topsoil with some rootlets	299700	6178300	paddock
AD9	13/5/10	TOPSOIL -- brown silty clay topsoil with some rootlets	299700	6178200	paddock
AE8	12/5/10	TOPSOIL -- brown silty clay topsoil with some rootlets	299791	6178303	paddock
AE9	13/5/10	TOPSOIL -- brown silty clay topsoil with some rootlets	299797	6178202	paddock

---

***APPENDIX D***

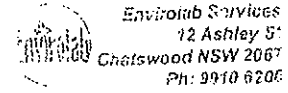
---

*Chain-of-custody Despatch Sheets  
NATA Laboratory Reports*



To: **EnviroLab Services**  
12 Ashley St  
Chatswood, NSW 2067  
Phone: +61 (0)2 9910 6200  
Fax: +61 (0)2 9910 6201

Attention: Aileen Hie



Lab No. 41394  
Date received: 25/5/10  
Received by: Ham  
Received by: JML  
Temp: Cool/Amber  
Sealing: Ice/icepack  
Security: Intact/Broken/None

Send results to: **Douglas Partners**  
Unit 1, 1 Luso Drive  
Unanderra NSW 2526  
Attention: Jane Smalley  
Jane.Smalley@douglaspartners.com.au  
Phone: 02 42711836  
Fax: 02 42711897

Project Name: Asbestos Assessment, Tailawarra Power Station  
Project Number: 40661.03  
Sampler: AAW Phone: 42711836

**All soil samples to be tested for Asbestos, as per David Springer Email dated 8 April 2010**

Standard Turnaround

Transported to laboratory by: TNT  
Relinquished by: OAS Signed: J Smalley  
Date and time: 29/5/10 2:30 pm

**SAMPLES RECEIVED**

Please sign and date to acknowledge receipt of samples and fax back

Signature:

Date: Lab Ref:

Sample ID	Lab ID	Sample ID	Lab ID	Sample ID	Lab ID	Sample ID	Lab ID	Sample ID	Lab ID
AA5	1	F21	57	K15	113	O12	169	Q07	225
AA6	2	F22	58	K16	114	O13	170	Q08	226
AA7	3	F23	59	K17	115	O14	171	Q09	227
AA8	4	G11	60	K18	116	O15	172	Q10	228
AA9	5	G12	61	K19	117	O16	173	Q11	228
AB5	6	G13	62	K20	118	O17	174	Q12	230
AB6	7	G14	63	K21	119	O18	175	Q18	231
AB7	8	G15	64	K22	120	O19	176	Q19	232
AB8	9	G16	65	K23	121	O20	177	Q20	233
AB9	10	G17	66	L13	122	O21	178	Q21	234
AC5	11	G18	67	L14	123	O22	179	Q22	235
AC6	12	G19	68	L15	124	O23	180	Q23	236
AC7	13	G20	69	L16	125	O24	181	Q24	237
AC8	14	G21	70	L17	126	O25	182	Q25	238
AC9	15	G22	71	L18	127	O26	183	Q26	239
AD7	16	G23	72	L20	128	O27	184	Q27	240
AD8	17	H12	73	L21	129	O28	185	Q28	241
AD9	18	H13	74	L22	130	O29	186	Q29	242
AE8	19	H14	75	L23	131	O30	187	Q30	243
AE9	20	H15	76	M10	132	O31	188	Q31	244
C21	21	H16	77	M11	133	O32	189	Q32	245
C22	22	H17	78	M12	134	O33	190	Q33	246
C23	23	H18	79	M13	135	O34	191	Q34	247
C24	24	H19	80	M14	136	O35	192	Q35	248
C25	25	H20	81	M15	137	P06	193	Q36	249
D15	26	H21	82	M16	138	P07	194	R04	
D16	27	H22	83	M17	139	P08	195	R05	
D17	28	H23	84	M18	140	P09	196	R06	
D18	29	I12	85	M19	141	P10	197	R07	
D19	30	I13	86	M20	142	P11	198	R08	
D20	31	I14	87	M21	143	P12	199	R09	
D21	32	I15	88	M22	144	P13	200	R10	
D22	33	I16	89	M23	145	P14	201	R11	
D23	34	I17	90	M24	146	P15	202	R12	
D24	35	I18	91	N08	147	P16	203	R18	
E12	36	I19	92	N09	148	P17	204	R19	
E13	37	I20	93	N10	149	P18	205	R20	
E14	38	I21	94	N11	150	P19	206	R21	
E15	39	I22	95	N12	151	P20	207	R22	
E16	40	I23	96	N13	152	P21	208	R23	
E17	41	J12	97	N14	153	P22	209	R24	
E18	42	J13	98	N15	154	P23	210	R25	
E20	43	J14	99	N16	155	P24	211	R26	
E21	44	J15	100	N17	156	P25	212	R27	
E22	45	J16	101	N18	157	P26	213	R28	
E23	46	J17	102	N19 migs	158	P27	214	R29	
F11	47	J18	103	N20	159	P28	215	R30	
F12	48	J19	104	N21	160	P30	216	R31	
F13	49	J20	105	N22	161	P31	217	R32	
F14	50	J21	106	N23	162	P32	218	R33	
F15	51	J21	107	N24	163	P33	219	R34	
F16	52	J22	108	O07	164	P34	220	R35	
F17	53	J23	109	O08	165	P35	221	R36	
F18	54	K12	110	O09	166	P36	222	S03	
F19	55	K13	111	O10	167	Q05	223	S04	
F20	56	K14	112	O11	168	Q06	224	S05	



EnviroLab Services  
12 Ashley St  
Chatswood NSW 2087  
Ph: 9910 6200

Job No: 41394  
Date received: 25/5/10  
Time received: 12 pm  
Received by: JML  
Temp: Cool/Ambient  
Cooling: Ice/Nopeak  
Security: Intact/Broken/None



**Envirolab Services Pty Ltd**  
ABN 37 112 535 645  
12 Ashley St Chatswood NSW 2067  
ph 02 9910 6200 fax 02 9910 6201  
enquiries@envirolabservices.com.au  
www.envirolabservices.com.au

## **CERTIFICATE OF ANALYSIS 41394**

**Client:**

**Douglas Partners Unanderra**  
Unit 1, 1 Luso Drive  
Unanderra  
NSW 2526

**Attention:** Jane Smalley

**Sample log in details:**

Your Reference:	<b><u>40661.03, Tallawarra Power Station</u></b>
No. of samples:	249 Soils
Date samples received:	25/05/10
Date completed instructions received:	25/05/10

**Analysis Details:**

Please refer to the following pages for results, methodology summary and quality control data.  
Samples were analysed as received from the client. Results relate specifically to the samples as received.  
Results are reported on a dry weight basis for solids and on an as received basis for other matrices.  
***Please refer to the last page of this report for any comments relating to the results.***

**Report Details:**

Date results requested by:	2/06/10
Date of Preliminary Report:	Not Issued
Issue Date:	1/06/10

NATA accreditation number 2901. This document shall not be reproduced except in full.

This document is issued in accordance with NATA's accreditation requirements.

Accredited for compliance with ISO/IEC 17025.

**Tests not covered by NATA are denoted with \*.**

**Results Approved By:**

  
\_\_\_\_\_  
Matt Mansfield  
Approved Signatory

Envirolab Reference: 41394  
Revision No: R 00



Asbestos ID - soils Our Reference: Your Reference Type of sample	UNITS ----- -----	41394-1 AA5 Soil	41394-2 AA6 Soil	41394-3 AA7 Soil	41394-4 AA8 Soil	41394-5 AA9 Soil
Date analysed	-	26/5/2010	26/5/2010	26/5/2010	26/5/2010	26/5/2010
Sample Description	-	Approx 40g Soil	Approx 40g Soil	Approx 40g Soil	Approx 40g Soil	Approx 40g Soil
Asbestos ID in soil	-	No asbestos found at reporting limit of 0.1g/kg	No asbestos found at reporting limit of 0.1g/kg	No asbestos found at reporting limit of 0.1g/kg	No asbestos found at reporting limit of 0.1g/kg	No asbestos found at reporting limit of 0.1g/kg
Trace Analysis	-	Respirable fibres not detected	Respirable fibres not detected	Respirable fibres not detected	Respirable fibres not detected	Respirable fibres not detected

Asbestos ID - soils Our Reference: Your Reference Type of sample	UNITS ----- -----	41394-6 AB5 Soil	41394-7 AB6 Soil	41394-8 AB7 Soil	41394-9 AB8 Soil	41394-10 AB9 Soil
Date analysed	-	26/5/2010	26/5/2010	26/5/2010	26/5/2010	26/5/2010
Sample Description	-	Approx 40g Soil	Approx 40g Soil	Approx 40g Soil	Approx 40g Soil	Approx 40g Soil
Asbestos ID in soil	-	No asbestos found at reporting limit of 0.1g/kg	No asbestos found at reporting limit of 0.1g/kg	No asbestos found at reporting limit of 0.1g/kg	No asbestos found at reporting limit of 0.1g/kg	No asbestos found at reporting limit of 0.1g/kg
Trace Analysis	-	Respirable fibres not detected	Respirable fibres not detected	Respirable fibres not detected	Respirable fibres not detected	Respirable fibres not detected

Asbestos ID - soils Our Reference: Your Reference Type of sample	UNITS ----- -----	41394-11 AC5 Soil	41394-12 AC6 Soil	41394-13 AC7 Soil	41394-14 AC8 Soil	41394-15 AC9 Soil
Date analysed	-	26/5/2010	26/5/2010	26/5/2010	26/5/2010	26/5/2010
Sample Description	-	Approx 40g Soil	Approx 40g Soil	Approx 40g Soil	Approx 40g Soil	Approx 40g Soil
Asbestos ID in soil	-	No asbestos found at reporting limit of 0.1g/kg	No asbestos found at reporting limit of 0.1g/kg	No asbestos found at reporting limit of 0.1g/kg	No asbestos found at reporting limit of 0.1g/kg	No asbestos found at reporting limit of 0.1g/kg
Trace Analysis	-	Respirable fibres not detected	Respirable fibres not detected	Respirable fibres not detected	Respirable fibres not detected	Respirable fibres not detected

Asbestos ID - soils Our Reference: Your Reference Type of sample	UNITS ----- -----	41394-16 AD7 Soil	41394-17 AD8 Soil	41394-18 AD9 Soil	41394-19 AE8 Soil	41394-20 AE9 Soil
Date analysed	-	26/5/2010	26/5/2010	26/5/2010	26/5/2010	26/5/2010
Sample Description	-	Approx 40g Soil	Approx 40g Soil	Approx 40g Soil	Approx 40g Soil	Approx 40g Soil
Asbestos ID in soil	-	No asbestos found at reporting limit of 0.1g/kg	No asbestos found at reporting limit of 0.1g/kg	No asbestos found at reporting limit of 0.1g/kg	No asbestos found at reporting limit of 0.1g/kg	No asbestos found at reporting limit of 0.1g/kg
Trace Analysis	-	Respirable fibres not detected	Respirable fibres not detected	Respirable fibres not detected	Respirable fibres not detected	Respirable fibres not detected

Asbestos ID - soils Our Reference: Your Reference Type of sample	UNITS ----- -----	41394-21 C21 Soil	41394-22 C22 Soil	41394-23 C23 Soil	41394-24 C24 Soil	41394-25 C25 Soil
Date analysed	-	26/5/2010	26/5/2010	26/5/2010	26/5/2010	26/5/2010
Sample Description	-	Approx 40g Soil	Approx 40g Soil	Approx 40g Soil	Approx 40g Soil	Approx 40g Soil
Asbestos ID in soil	-	No asbestos found at reporting limit of 0.1g/kg	No asbestos found at reporting limit of 0.1g/kg	No asbestos found at reporting limit of 0.1g/kg	No asbestos found at reporting limit of 0.1g/kg	No asbestos found at reporting limit of 0.1g/kg
Trace Analysis	-	Respirable fibres not detected	Respirable fibres not detected	Respirable fibres not detected	Respirable fibres not detected	Respirable fibres not detected

Asbestos ID - soils Our Reference: Your Reference Type of sample	UNITS ----- -----	41394-26 D15 Soil	41394-27 D16 Soil	41394-28 D17 Soil	41394-29 D18 Soil	41394-30 D19 Soil
Date analysed	-	26/5/2010	26/5/2010	26/5/2010	26/5/2010	26/5/2010
Sample Description	-	Approx 40g Soil	Approx 40g Soil	Approx 40g Soil	Approx 40g Soil	Approx 40g Soil
Asbestos ID in soil	-	No asbestos found at reporting limit of 0.1g/kg	No asbestos found at reporting limit of 0.1g/kg	No asbestos found at reporting limit of 0.1g/kg	No asbestos found at reporting limit of 0.1g/kg	No asbestos found at reporting limit of 0.1g/kg
Trace Analysis	-	Respirable fibres not detected	Respirable fibres not detected	Respirable fibres not detected	Respirable fibres not detected	Respirable fibres not detected

Asbestos ID - soils Our Reference: Your Reference Type of sample	UNITS ----- -----	41394-31 D20 Soil	41394-32 D21 Soil	41394-33 D22 Soil	41394-34 D23 Soil	41394-35 D24 Soil
Date analysed	-	26/5/2010	26/5/2010	26/5/2010	26/5/2010	26/5/2010
Sample Description	-	Approx 40g Soil	Approx 40g Soil	Approx 40g Soil	Approx 40g Soil	Approx 40g Soil
Asbestos ID in soil	-	No asbestos found at reporting limit of 0.1g/kg	No asbestos found at reporting limit of 0.1g/kg	No asbestos found at reporting limit of 0.1g/kg	No asbestos found at reporting limit of 0.1g/kg	No asbestos found at reporting limit of 0.1g/kg
Trace Analysis	-	Respirable fibres not detected	Respirable fibres not detected	Respirable fibres not detected	Respirable fibres not detected	Respirable fibres not detected

Asbestos ID - soils Our Reference: Your Reference Type of sample	UNITS ----- -----	41394-36 E12 Soil	41394-37 E13 Soil	41394-38 E14 Soil	41394-39 E15 Soil	41394-40 E16 Soil
Date analysed	-	26/5/2010	26/5/2010	26/5/2010	26/5/2010	26/5/2010
Sample Description	-	Approx 40g Soil	Approx 40g Soil	Approx 40g Soil	Approx 40g Soil	Approx 40g Soil
Asbestos ID in soil	-	No asbestos found at reporting limit of 0.1g/kg	No asbestos found at reporting limit of 0.1g/kg	No asbestos found at reporting limit of 0.1g/kg	No asbestos found at reporting limit of 0.1g/kg	No asbestos found at reporting limit of 0.1g/kg
Trace Analysis	-	Respirable fibres not detected	Respirable fibres not detected	Respirable fibres not detected	Respirable fibres not detected	Respirable fibres not detected

Asbestos ID - soils Our Reference: Your Reference Type of sample	UNITS ----- -----	41394-41 E17 Soil	41394-42 E18 Soil	41394-43 E20 Soil	41394-44 E21 Soil	41394-45 E22 Soil
Date analysed	-	26/5/2010	26/5/2010	26/5/2010	26/5/2010	26/5/2010
Sample Description	-	Approx 40g Soil	Approx 40g Soil	Approx 40g Soil	Approx 40g Soil	Approx 40g Soil
Asbestos ID in soil	-	No asbestos found at reporting limit of 0.1g/kg	No asbestos found at reporting limit of 0.1g/kg	No asbestos found at reporting limit of 0.1g/kg	No asbestos found at reporting limit of 0.1g/kg	No asbestos found at reporting limit of 0.1g/kg
Trace Analysis	-	Respirable fibres not detected	Respirable fibres not detected	Respirable fibres not detected	Respirable fibres not detected	Respirable fibres not detected