




Appendix C: Visual Simulation Package prepared by Haycraft Duloy Pty Ltd

The viewing locations for which artistic impressions have been prepared are shown on Maps A, B, C, D and E. (Haycraft Duloy refers to these Maps as Maps 2A, 2B, 2C and 2D in his Methodology Statement)

The future development area for Employment purposes is also shown with the help of a faint blue outline in the views in which it will be visible, in both internal and external views.



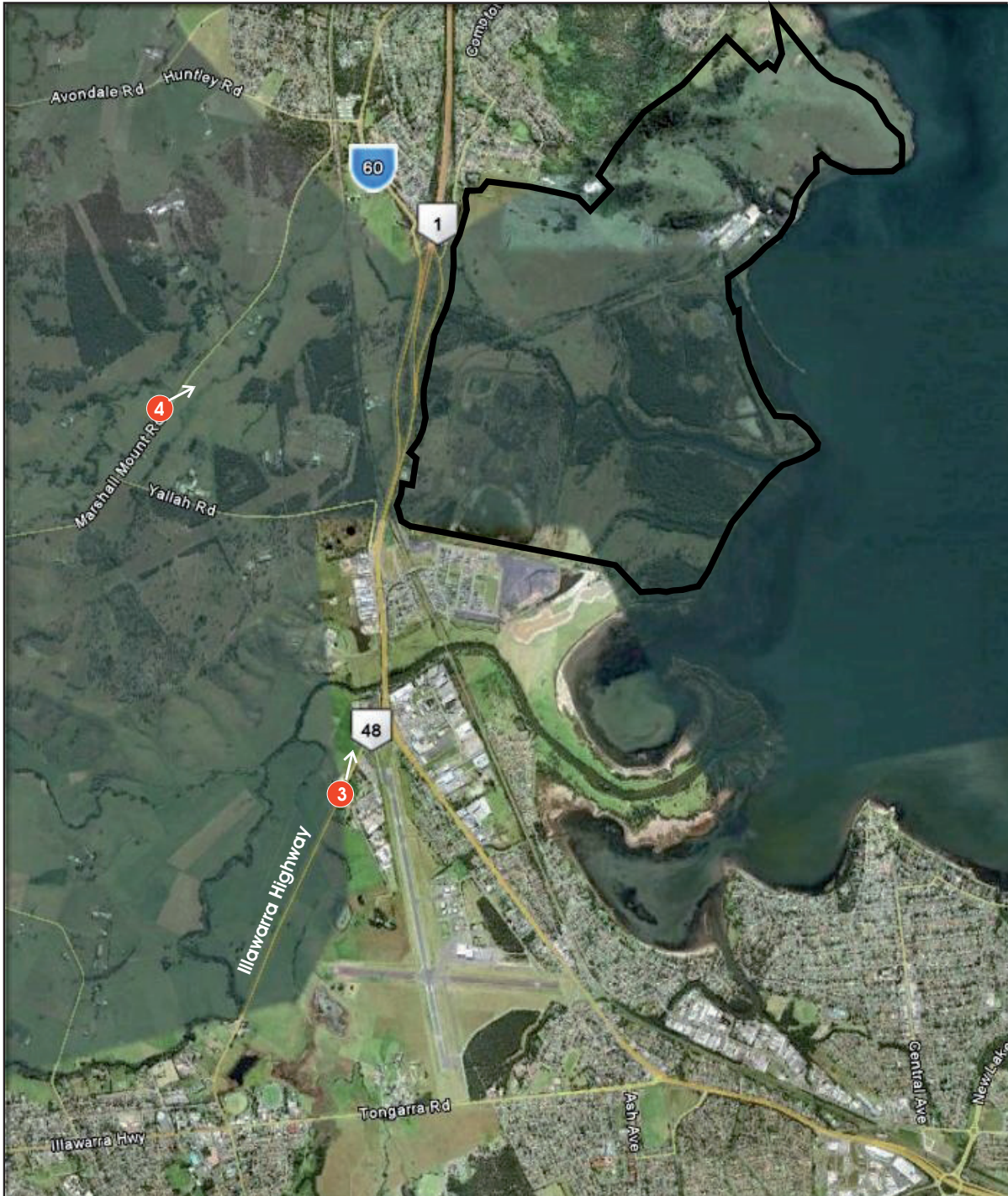
1 Viewing location

 Site boundary

Map A
Viewing locations for photomontages



Not to Scale



3 Viewing location

 Site boundary

Map B
Viewing locations for photomontages


Not to Scale





5 Viewing location

Site boundary

Map C
Viewing locations for photomontages





-  Viewing location
-  Site boundary

Map D
Viewing locations for photomontages



Not to Scale

Haycraft Duloy Pty Limited

architectural illustration

63 Justin Street Lilyfield
NSW 2040 Australia
telephone 612 9555 4433
facsimile 612 9555 4488
email hd@haycraftduloy.com.au
www.haycraftduloy.com.au
ABN 65 054 822 472



5th November, 2010

Richard Lamb & Associates
P.O. Box 1727
Neutral Bay
NSW 2089

For the attention of Komal Saxena

Dear Komal,

Re: Tallawarra Lands, Lake Illawarra

Further to your instructions we have undertaken nine illustrations showing the impact of the proposed development of the curtilage around the TRUenergy Power Station on Lake Illawarra.

Our methodology was as follows:

1) Site visit and photography from positions marked on 'Viewing Location Drawings', Map 1, Map 2A, Map 2B, Map 2C, Map 2D supplied by RLA. This was carried out on 27th June, 2010 using a Canon 5D MkII (21 MPX, translating to a file size of 60.2MB [open]) with a EF17-40, f/4L USM lens. The photography position/s were bracketed and supplied to RLA for final selection. (see addendum)

2) A model of the proposed development was generated using an architectural and engineering modelling program called 'Form Z'. Incorporated into that model was a basic model of any building currently on the subject site, including the Lake's edge and other salient landscape features that could be identified in the photos and were marked on the Masterplan and/or overhead photography. A selection of contours, landscape features, buildings, and transmission pylons where they could be identified, were also built into the model for registering onto the photograph. The proposed Stage Two power station, roads and 'blocks' representing housing and commercial buildings were modelled and placed. The height for housing was set at 9M, and commercial, from 10M to 15M (to allow for sloping ground line in some locations). (see addendum)

3) The camera positions in the model were set to replicate the chosen photography positions and the model laid over the photographs, using the landscape features to check alignment. (see addendum)

4) Each viewpoint was then traced over in pencil to take off local topography, roads, existing built structures and any new building mass appearing in and around these forms. (see addendum)

5) These line drawings were checked then painted as watercolour illustrations. Some licence was used to create stronger sunlight and shadows to assist in the 'reading' of the new work, however the effect of distance and colour perspective was preserved for accuracy.

We thank you for the opportunity to work on this commission.

Yours sincerely,
John Haycraft

A handwritten signature in black ink, reading "John Haycraft" in a cursive style, followed by two short horizontal dashes.

**External Views
(Originals and Artistic Impressions)**



View 1 (Original)
Haywards Bay Drive looking north



View 1 (Artistic Impression)
Haywards Bay Drive looking north



View 2 (Original)
From the Princes Highway looking north-northeast



View 2 (Artistic Impression)
From the Princes Highway looking north-northeast



View 3 (Original)
Illawarra Highway near intersection with Crome Lane looking north



View 3 (Artistic Impression)
Illawarra Highway near intersection with Crome Lane looking north



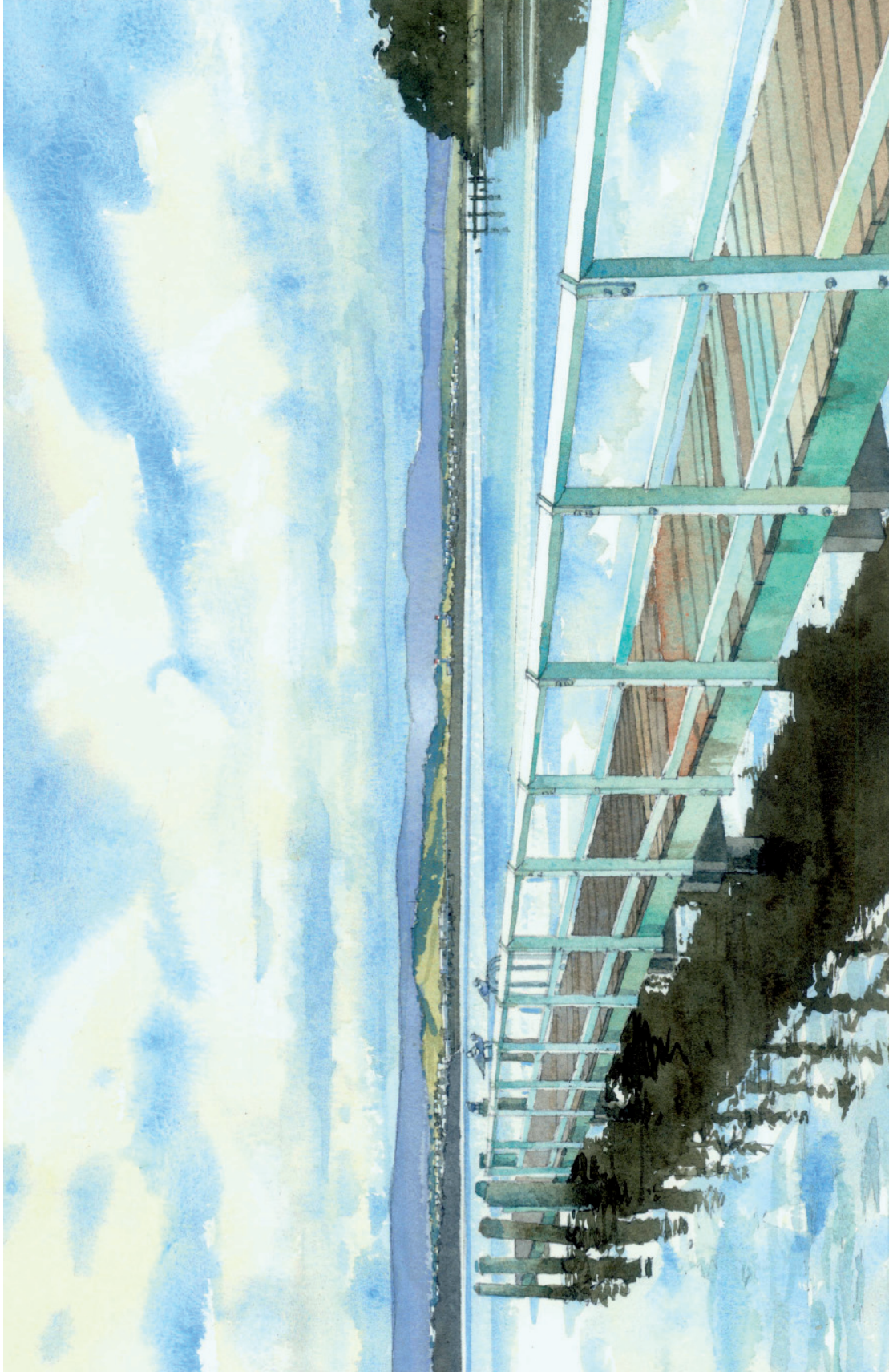
View 4 (Original)
Mount Marshall Road near No. 301, looking north



View 4 (Artistic Impression)
Mount Marshall Road near No. 301, looking north



View 5 (Original)
From the edge of the lake in Central Park on The Boulevard in the Shellharbour locality.



View 5 (Artistic Impression)
From the edge of the lake in Central Park on The Boulevard in the Shellharbour locality.



View 6 (Original)
Intersection of Cuthbert Drive and Landy Drive, Mt Warrigal.



View 6 (Artistic Impression)
Intersection of Cuthbert Drive and Landy Drive, Mt Warrigal.



View 7 (Original)

From a reserve (Koonawarra Bay Improvement) off Lakeside Drive in the Koonawarra locality, looking south.



View 7 (Artistic Impression)
From a reserve (Koonawarra Bay Improvement) off Lakeside Drive in the Koonawarra locality, looking south.