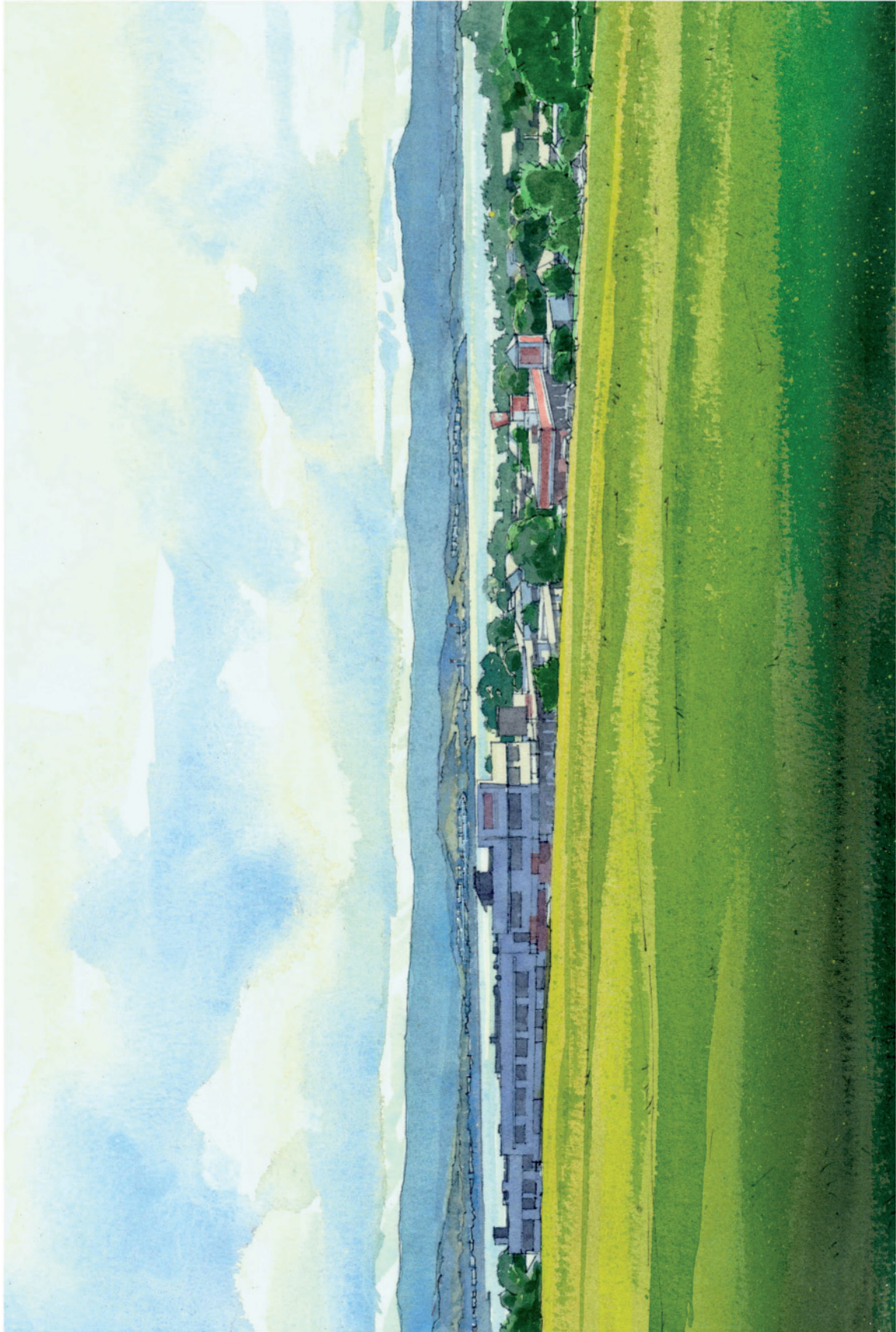




View 8 (Original)
From high point (reserve) on Lamerton Crescent in the vicinity of Shellharbour City Council Chambers looking north-northwest.



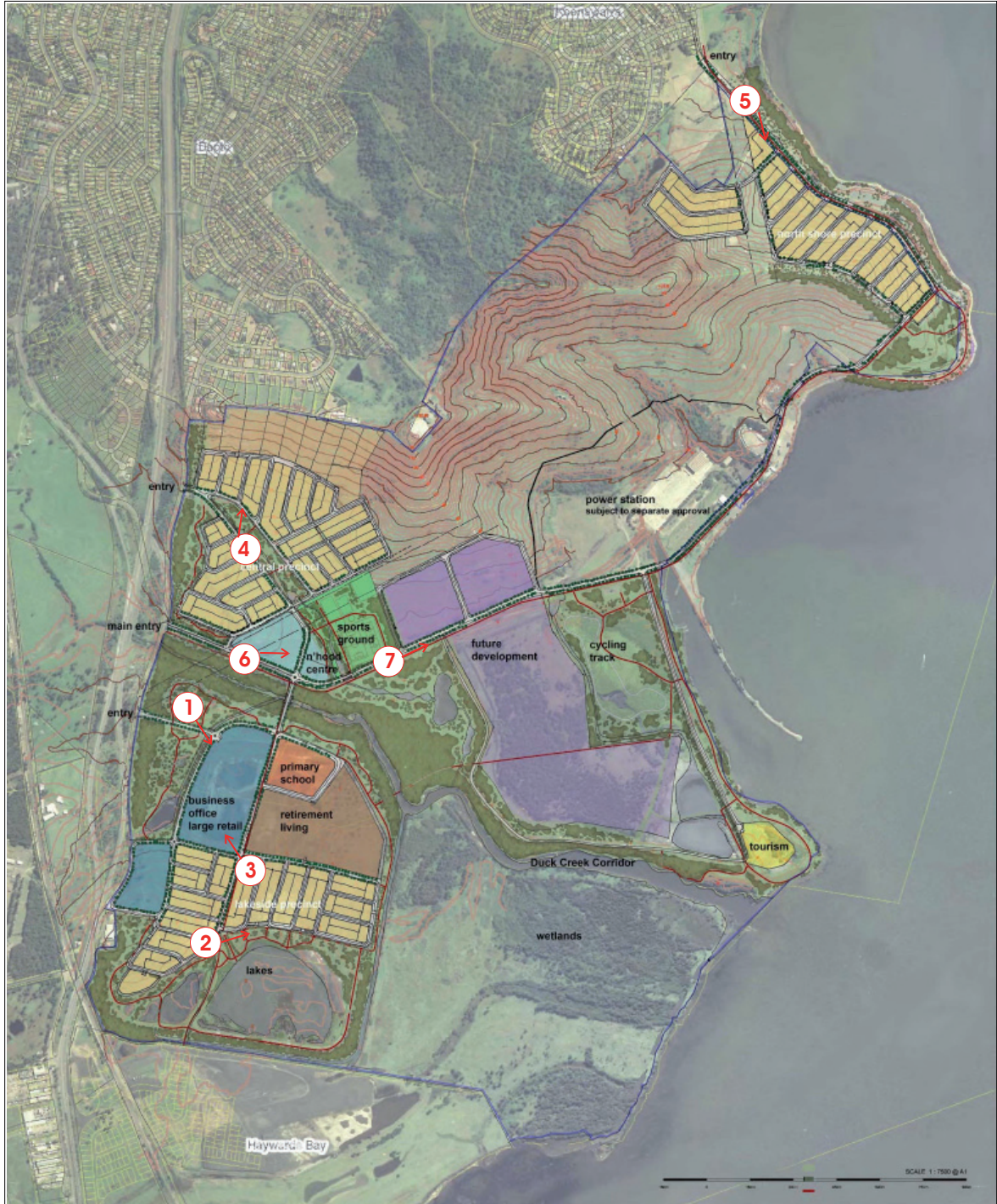
View 8 (Artistic Impression)
From high point (reserve) on Lamerton Crescent in the vicinity of Shellharbour City Council Chambers looking north-northwest.



View 9 (Original)
From the southern edge of the water tank near Mount Brown, looking south-southeast



View 9 (Artistic Impression)
From the southern edge of the water tank near Mount Brown, looking south-southeast



- ① Internal Viewing location
- Site boundary

Map E
Internal Viewing locations for photomontages (Courtesy Warren Lee Urban Design Pty Ltd)





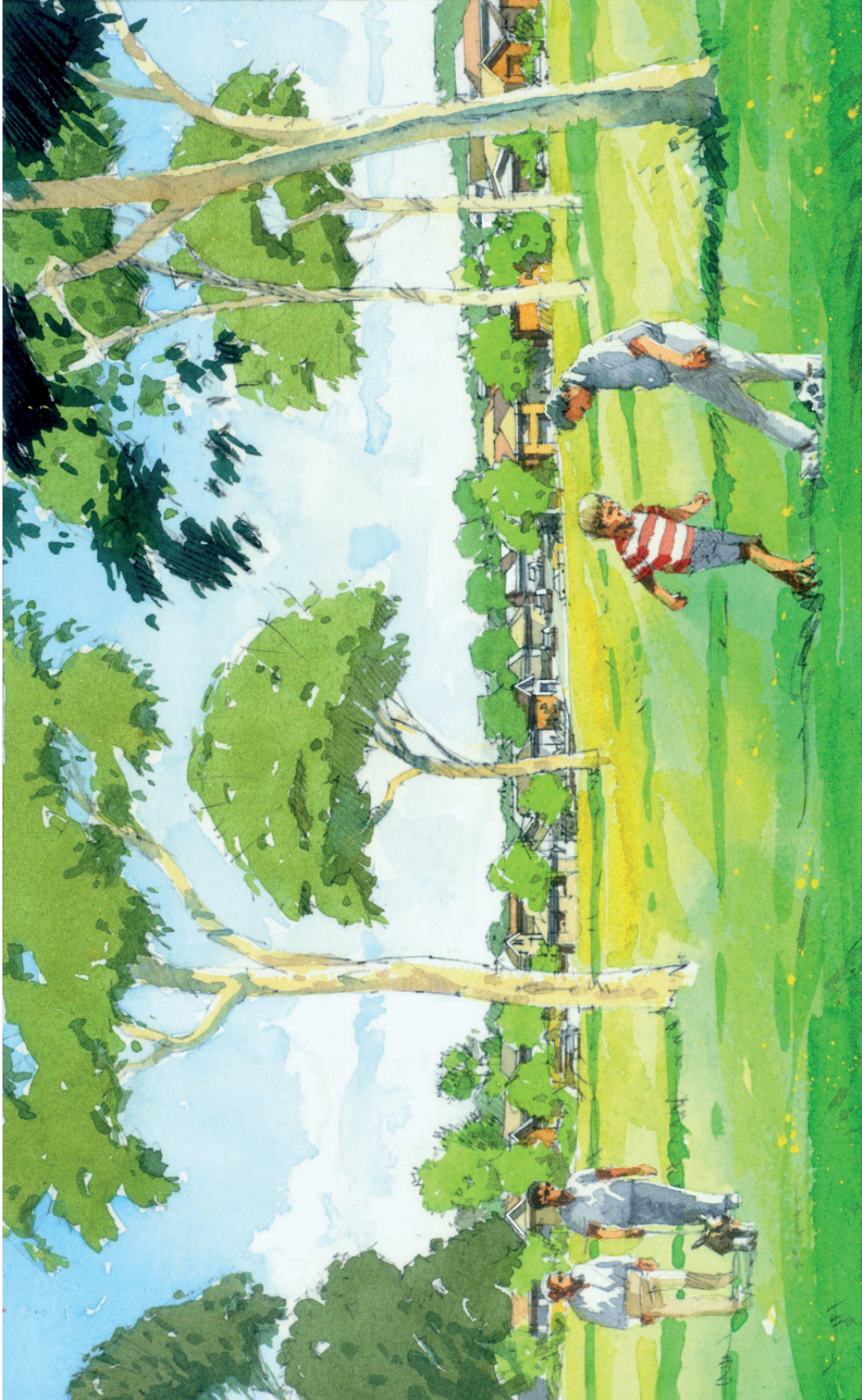
View 1 (Refer to Map E on Page 85)



View 2 (Refer to Map E on Page 85)



View 3 (Refer to Map E on Page 85)



View 4 (Refer to Map E on Page 85)



View 5 (Refer to Map E on Page 85)



View 6 (Refer to Map E on Page 85)



View 7 (Refer to Map E on Page 85)



Appendix D

Curriculum Vitae: Dr. Richard Lamb

Summary

I am a professional consultant specialising in visual impacts assessment and the principal of Richard Lamb and Associates (RLA). I am an honorary senior lecturer in Architecture and Heritage Conservation in the Faculty of Architecture, Design and Planning at the University of Sydney. I have taught and specialised in resource management, environmental impact assessment and visual perception studies for 30 years.

RLA is a firm that provides professional services, expert advice and landscape and aesthetic assessments in many different contexts. We carry out strategic planning studies to protect and enhance scenic quality and landscape heritage values, conduct scenic and aesthetic assessments in all contexts, from rural to urban, provide advice on view loss and view sharing and conduct landscape heritage studies. We act for various client groups on an independent basis, including local councils, government departments and private clients to whom we provide impartial advice. I provide expert advice, testimony and evidence to the Land and Environment Court of NSW in various classes of litigation. I have appeared in over 120 cases and made submissions to several Commissions of Inquiry. I have been the principal consultant for over 350 consultancies concerning the visual impacts and landscape heritage area of expertise during the last ten years.

At the University of Sydney I have the responsibility for teaching and research in my areas of expertise, which are visual perception and cognition, aesthetic assessment, landscape assessment, interpretation of heritage items and places and cultural transformations of environments. I teach both undergraduate and postgraduate students in these areas, giving specialised elective courses in visual and aesthetic assessment. I supervise postgraduate research students undertaking PhD and Masters degree academic research in the area of heritage conservation and Environment Behaviour Studies (EBS). I am a member of the EBS disciplinary group. The latter field is based around empirical research into human aspects of the built environment, in particular, in my area of expertise, aspects of visual perception, landscape preference and environmental cognition. I carry out empirical and scholarly research in these fields on a continuing basis.

I have a number of academic research publications in local and international journals that publish research in EBS and heritage conservation and I am the co-editor of the academic Journal of the Australian and New Zealand Association for Person-Environment Studies, called by the acronym PaPER (People and Physical Environment Research), which publishes papers in EBS, environmental psychology, cultural heritage management and in heritage conservation. The association has affiliations with a number of international EBS research organisations. I have had a number of research papers published in the last five years on landscape perception and preference, landscape aesthetics and heritage conservation.

I have developed my own methods for landscape assessment, based on my education, knowledge from research and practical experience. They are related to seminal research carried out in the 1970s, sometimes described at the Visual Management System approach, but are highly modified by myself in the light of contemporary knowledge of aesthetic preference and cognition and my experience in visual impacts assessment in urban environments. These methods have also been the subject of a number of professional seminars and of guest lecture courses I have conducted at the University of New South Wales.

Qualifications

Bachelor of Science - First Class Honours from the University of New England.

Doctor of Philosophy from the University of New England in 1975.

Honorary Senior lecturer in the Faculty of Architecture, Design and Planning and in Heritage Conservation, University of Sydney.



Visiting lecturer, University of New South Wales, School of The Built Environment

Principal of Richard Lamb and Associates and Director of Lambcon Associates Pty Ltd.

Since 1980 I have pursued research related to my teaching responsibilities and professional practice. My major research works are in:

Landscape heritage assessment

Visual perception

Landscape assessment and heritage impact assessment

Social and aesthetic values of the natural and built environment

Publications and presentations relevant to visual perception and assessment of landscapes are listed below.

Affiliations

Professional

Chartered Biologist, Institute of Biology (UK)

Editor, Journal of the Australian and New Zealand Journal for Person Environment Studies, titled "People and Physical Environment Research"

Community Organisations

Member National Trust of Australia

Chairman Landscape Conservation Committee (1995-2001)

Member Bush Management Advisory Committee (1989-2003)

Member Landscape Conservation Committee (1985-2008)

Chairman Landscape Assessment Committee (1985-1991)

Government Committees

Member, Cultural Heritage Research Advisory Committee, Department of Environment and Conservation NSW National Parks and Wildlife Service

Member, Australian Heritage Commission, NSW Natural Environment Evaluation Panel (1998-2000)

Member, South East Queensland Regional Organisation of Councils Scenic Amenity Study Program Advisory Committee (2003-2005)

International Journals for which Papers are refereed

Landscape & Urban Planning

Journal of Architectural & Planning Research

Architectural Science Review

People and Physical Environment Research (Journal of the Australian and New Zealand Association for Person Environment Studies)



Journal of Environmental Psychology
Australasian Journal of Environmental Management
Ecological Management & Restoration

Landscape Assessment and Strategic Planning for Visual Resource Protection

Assessment and Advice

- A D M Hewitt
Aesthetic assessment and evaluation of REF for proposed wind farm by Pacific Power and Partners, Crookwell.
- Ashfield City Council
Ashfield Town Centre, Study of Building Heights to be incorporated into the Town Centre Development Control Plan.
Review of DA for Abacus Ashfield Mall Redevelopment, against the performance standards of Building Heights Study.
- Brisbane City Council
Cultural Mapping exercise, for Quality Urban Corridors Program, Logan Road, Lutwyche/Gympie Roads, in association with Archimix Brisbane.
- Brisbane City Council and the Department of Natural Resources, Queensland
Protection of Scenic Landscapes Study; Regional landscape study to develop a methodology for the documentation of scenic values of the South East Region of Queensland.
South East Queensland Regional Organisation of Councils, advice on Scenic Amenity Study.
- Burt, W
Visual impact assessment and advice on view loss and view sharing including advocacy with Woollahra Council, private residential development, Queens Avenue, Vaucluse
- Camp Scott and Furphy
Visual impact assessment as part of the Review of Environmental Factors for Shellharbour Waste Water Treatment Works.
- Council of the City of Gosford
City Wide Visual Quality Study in association with David Kettle Consulting Services.
Development Control Plan-Scenic Quality.
David Kettle Consulting Services Pty Ltd
Local Environmental Study, The Scenic Highway, Terrigal.
- Demian Constructions
Strategic planning and visual impact assessment for proposed rezoning and master plan application, Riverlands Golf Course, Milperra.
- Department of Infrastructure, Planning and Natural Resources and The Uniting Church of Australia
Visual impact assessment for subdivision of land at Ingleside Road, Ingleside.
- Dupere, E
Visual impact assessment and strategic planning for proposed rezoning and subdivision of land at Menangle Road, Menangle
- Dexus Property group
Visual impact assessment and advice on building height controls for Greystanes Estate, Southern Employment Land, Greystanes.
- Globe Property Group
Visual and landscape strategic planning assessment of proposed draft amendment to Wingecarribee LEP 1989, Burradoo, Moss Vale
- Growth Centres Commission of NSW in association with Jackson Teece Architecture
Landscape and visual assessment to inform the strategic planning of development footprint and



urban form analysis of North Kellyville precinct identified as an urban release area forming part of North West Growth Centre, North Kellyville.

- Hastings Shire Council
Review and redrafting of DCPs 9 and 20 relating to scenic and heritage resource protection, Port Macquarie.
Visual resources and scenic conservation study as part of Camden Haven River Estuary Processes Study, in association with Patterson Britton and Partners.
- Hillside Planners
Landscape assessment, curtilage study and heritage impact assessment as part of a Local Environmental Study, curtilage of Duckenfield House, Duckenfield, Hunter Valley.
- Ingham Planning
Visual impact assessment for subdivision application, The Northern Road, Glenmore Park.
-
- Ingold, Trehay and Neate Pty Ltd
Local environmental study, proposed subdivision and residential development, Berkeley Vale, Wyong Shire.
- Johnson Property Group
Advice on urban design and potential visual impacts, proposed Trinity Point Marina and tourism development Concept Plan, Lake Macquarie.
Visual impact assessment of proposed residential subdivision, mitigation measures and advice on conditions for site specific DCP, Scarborough Gardens, Bonnells Bay
- Kinsmen Queensland
Visual constraints and residential development strategy advice, Lennox Head.
Advocacy concerning strategic planning process and proposed rezoning of land, Lennox Head.
- Ku ring gai Council
Brief development for municipality wide neighbourhood visual and streetscape study.
Local Environmental Study: scenic quality of South Turrumurra.
- Landcom
Strategic planning advice and visual impact assessment for proposed NSW Police Facilities on former Sydney Water land, Potts Hill.
- Lewisham Estate Pty Limited
Visual Impact Assessment Part 3A Concept Plan application. Old Canterbury Road, Lewisham.
- Meadows of Milton
Scenic resources and visual constraints study, proposed seniors living proposal involving concurrent rezoning, Milton, South Coast.
- Nergl Developments Pty Ltd
Visual Impact Assessment and Advices of rural subdivision, The Northern Road, Glenmore Park.
- Office of Marine Administration and Department of Environment and Planning
Methodology for assessment of visual issues and design guidelines for the DCP to accompany SREP 22 and 23, Sydney and Middle Harbours and Parramatta River: and Part 5 checklist.
- Pittwater Council
Scenic qualities, landscape resources and visual constraints study, potential rezoning and land swap exercise, Council Works Depot site, Ingleside.
- Quality Environmental Management
The Water Board (now Sydney Water) review of visual environmental effects for Wongawilli Reservoir proposal, West Dapto, Illawarra.
Road Transit Authority (Review of visual environmental effects for Oak Flats Highway Interchange proposal, Oak Flats to Dunmore section, Princes Highway, Illawarra).
- Rockdale City Council
Development control strategy and advice for Draft DCP, Rocky Point Road, Ramsgate.
- Rossmysra Pty Ltd
Visual impact evaluation of a series of possible locations for dwelling sites, Menai.



- Seyffer, M
Report on strategic planning issues and submission to Shoalhaven City Council related to Scenic Preservation hatching being proposed over the locality of Cambewarra Village, North Nowra.
- Shoalhaven City Council
East Nowra Local Environmental Study.
Old Erowal Bay visual quality study.
Brief for Mollymook Local Environmental Study: Visual Impacts.
Visual impacts assessment relating to land swap and rezoning proposals, Milton and Narrawallee.
- SPD Planning
Urban design and visual impact study, Beach Street, Coogee.
- Sutherland Shire Council, jointly with Wollongong City Council.
Commission of Inquiry into rezoning, primary submission on visual impacts, Helensburgh.
- The Penrith Gospel Trust
Visual impact assessment of new school house, Kingswood Road, Orchard Hills.
- Wingecarribee Shire Council
Preparation of Development Control Plan No 53 for the siting of buildings in rural zones.
- Winten Property Group
Strategic planning study for Stage 1 Master Plan, visual impact assessment for rezoning applications, principles for siting of buildings and mitigation of potential impacts, Boydtown, Eden region.

Publications

Refereed articles

- Falchero, S., Lamb, R.J., Peron, E.M. and Purcell, A.T. (1992). Is our experience of the world more complicated than we think? In Aristides, M. and C Karaletsou, *Socio-Environmental Metamorphoses: Builtscapes, Landscape, Ethnoscape, Euroscape*, Thessaloniki, Aristotle University Press, IV, 121-125.
- Fuller, A, and Lamb, R.J. (2002). The objectification and aesthetication of cultural landscapes: The meeting point of western heritage traditions and Australian Cultural Landscapes, *Journal of the Australian and New Zealand Association for Person Environment Studies*, 57, 16-26
- Lamb, R.J. (1985). Litter fall and nutrient turnover in two eucalypt woodlands. *Australian Journal of Botany*, 33, 1-14
- Lamb, R.J. (1988). The nexus between aesthetics and ecology: perception of naturalness and landscape management. *Journal of the Australian and New Zealand Association for Person Environment Studies*, 30, 23-32.
- Lamb, R.J. (1989). Identification and assessment of rural cultural landscapes: The National Trust's method, and a relevant case study. *Historic Environment* 7(2), 38-44.
- Lamb, R.J. (1991). Ecology and architecture: A tradition of neglect. *Journal of the Australian and New Zealand Association for Person Environment Studies*, 37/38, 7-18.
- Lamb, R.J. (1991). The challenge of ecology to the design professions I: Invention and intervention. *Exedra*, 3(1), 16-24.
- Lamb, R.J. (1992). Aesthetic impacts of development on valued landscapes: The nature of evidence given in five cases. *Journal of the Australian and New Zealand Association for Person Environment Studies*, 41-42, 31-52.
- Lamb, R.J. (1993). Psychological type in first year Architecture students: Potential new answers to some old questions. *Higher Education Research and Development Association*, 16, 159-164.
- Lamb, R.J. (1995). Biodiversity, in: *Architecture and the Environment*, (New Zealand Institute of Architects), 2, 1-6.
- Lamb, R.J. (1995). Biodiversity, in: *Environmental Design Guide*, (Royal Australian Institute of Architects), General Issues, 1,(3), 1-6.



- Lamb, R.J. (1995). The scenic quality of the Hawkesbury-Nepean River: a critique of three versions of community participation in its conservation. *Journal of the Australian and New Zealand Association for Person Environment Studies*, 48, 1-17.
- Lamb, R.J., & Purcell, A.T. (1990). Perception of naturalness in landscape and its relationship to vegetation structure. *Landscape and Urban Planning*, 19, 333-352.
- Lamb, R.J., and Purcell, A.T. (2002). Landscape perception: A Comparison of perceived naturalness to variations in the ecological naturalness of vegetation. *Journal of the Australian and New Zealand Association for Person Environment Studies* 57, 1-16.
- Lamb, R.J., and Holland, G. (1995). Are physical and cultural issues of ecologically sustainable development always compatible?: The Australian example of urban consolidation. *People and Physical Environment Research*, 47, 34-41.
- Lamb, R.J., and Morris, C. (1996). Symbolic, Spiritual and Aesthetic values of forests. In: Design for People, Groves, M.A. and Wong, S. (eds), Sydney, People and Physical Environment Research, pp 79-84.
- Lamb, R.J., Purcell, A.T., Mainardi Peron, E., and Falchero, S. (1994). Cognitive categorisation and preference for places. In S.J. Neary, M.S. Symes and F.E. Brown, *The Urban Experience: a People Environment Perspective*, London, E & F.N. Spon, pp 405-416.
- Outhred, R.K., Lainson, R., Lamb, R. and Outhred, D. (1985). A floristic survey of Ku Ring Gai Chase National Park. *Cunninghamia*, 3, 313-338.
- Lamb, R.J., and Purcell, A.T. (1982). A Landscape Perception Study of the Peninsula Area of Warringah Shire: Implications for Planning Controls, Building Regulations and Other Areas of Council Activities. University of Sydney, Department of Architecture, Occasional Paper, 44pp.
- Purcell, A.T. and Lamb, R.J. (1984). Landscape perception: An examination and empirical investigation of two central issues in the area. *Journal of Environmental Management*, 19, 31-63.
- Purcell, A.T. and Lamb, R. J. (1998). Preference and naturalness: An ecological approach. *Landscape and Urban Planning*, 42, 57-66.
- Purcell, A.T., Lamb, R.J., Mainardi Peron, E.M. and Falchero, S. (1994). Preference of preferences for landscapes? *Journal of Environmental Psychology* 16, 195-205.
- Peron, E., Purcell, A.T., Staats, H., Falchero, S. and Lamb, R.J. (1998). Models of preference for outdoor scenes: some experimental evidence. *Environment and Behaviour*, 30, 382-305.

Published Symposia

- Lamb, R.J. (1994). Advancing arguments for the conservation of valued places. In: Ramsay, J and Paraskevopolous, J (eds). *More Than Meets the Eye: Identifying and assessing aesthetic value*. Australian Heritage Commission Technical Workshop Series No. 7, University of Melbourne, 1993. Canberra, Australian Heritage Commission, pp 23-38.
- Lamb, R. J. (1994). Technics or ethics? In: Ross, H., Dovers, S., Sexton, M. and Rodger, A. (eds). *Sustainability and the built environment: Interpretation and strategies*. Fundamental Questions paper No. 12, Centre for Resource and Environmental Studies, Canberra, Australian National University, p 20.
- Lamb, R. J., and Morris, C. (1996). Cultural values in the assessment of old growth forests, in, *The coming of age: Forest age and heritage values*. 1997 Technical Series No. 1, Canberra, Australian Heritage Commission.
- Thorne, R.T. and Lamb, R.J. (1990). Can schools of architecture and their design teaching be improved through understanding psychological differences between individuals and groups within the organisations?. In: J. Plume (ed), *Architectural Science and Design in Harmony: Proceedings of Joint ANZASCA/ADTRA Conference*, University of New South Wales.
- Thorne, R.T. and Lamb, R.J. (1991). The education of architectural designers. What will be the qualities required of the teachers of design if the Higher Education Council policy for universities is implemented? ANZASCA Conference Proceedings, Adelaide, University of Adelaide.



Invited symposium papers

- Lamb, R.J. (1988). Ecological and perceptual changes to bushland associated with Lantana invasion. Managing Warringah's Bushland (Symposium). Sydney, Warringah Shire Council.
- Lamb, R.J. (1983). Ecological and aesthetic objectives in bush management. In: Sydney or the Bush? Australian Institute of Horticulture Conference, Sydney, Ku ring Gai CAE.
- Lamb, R.J. (1994). Unique landscape and vegetation. In: Things we want to keep: Environmental heritage management under the new Local Government Act. National Trust of Australia seminar, Australian Museum, March 1994; Sydney, National Trust of Australia.

Unrefereed conference papers

- Lamb, R.J. (1991). Integrating the natural and built environments. Practice and Theory of Cultural Heritage: A New Relationship?. University of Sydney, Continuing Education Seminar in conjunction with Australia ICOMOS, July 18, 1991.
- Lamb, R.J. (1994). Who cares about conservation of river landscapes? Public participation in the scenic quality study of the Hawkesbury-Nepean River. Hawkesbury River Bi-centenary Conference, University of Western Sydney, Hawkesbury, September, 1994.
- Lamb, R.J. (1995). Conservation of the scenic quality of rural areas: The role of local government. Planning for Rural Areas: the Key Role of Local Government Conference, Hawkesbury Nepean River Catchment Management Trust.

Research Reports

- David Kettle Consulting Services Pty Ltd and Lamb, R.J. (1995). City Wide Scenic Quality Study, City of Gosford. Gosford, Gosford City Council., 114pp, plus map atlas 33pp.
- David Kettle Consulting Services, Dr Richard Lamb and Integrated Site Management, (1995), Landscape Values of the Hoxton Park Corridor, Department of Urban Affairs and Planning, 96pp.
- Lamb, R.J. (1989)(editor and principal author). Landscape Assessment Manual of Practice. Sydney, National Trust of Australia (NSW), 30pp.
- Lamb, R.J. (1990)(editor and principal author). Landscapes of the Southern Highlands. Sydney, National Trust of Australia (NSW), 42pp.
- Lamb, R.J. and Morris, C. (1995). Cultural investigations: The feasibility of including cultural and aesthetic values in the identification of old growth forest. Joint Old Growth Forest Project, Resources and Conservation Audit Council of New South Wales.
- Lamb, R.J., and Morris, C. (1995). Scenic quality study of the Rural Lands of Hornsby Shire, Sydney, Shire of Hornsby, 33pp.
- Travers Morgan Pty Ltd and Lamb, R.J. (1996). Scenic Quality: Hawkesbury- Nepean River scenic quality study. Sydney, Department of Urban Affairs and Planning, 70pp, plus map atlas.
- Lambcon Associates (1998). Visual character study of South Turrumurra. For Ku-ring-gai Council and Department of Urban Affairs and Planning.
- Lambcon Associates (1998). Camden Local Government Area: Scenic and Cultural Landscape Study, Camden, Camden Council.
- Richard Lamb and Associates Consulting (2000). Heritage landscape and visual resources study, excluded parcels, former OTC site, Doonside.
- Richard Lamb and Associates (2005). Scenic and visual resources study, Western Sydney Regional Parklands, Doonside.