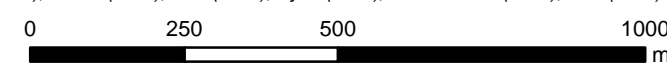


- | | | |
|---------------------------------|-----------------|---------------------------|
| Water pipeline | Road | Impact on site |
| Wastewater pipeline | Railway | Direct impact |
| Water pipeline 25 m buffer | Waterway | Potential impact |
| Wastewater pipeline 25 m buffer | Reservoir | Potential indirect impact |
| | Pumping station | No impact |

IDENTIFIED HERITAGE ITEMS IN RELATION TO THE PROPOSED WATER AND WASTEWATER SERVICES

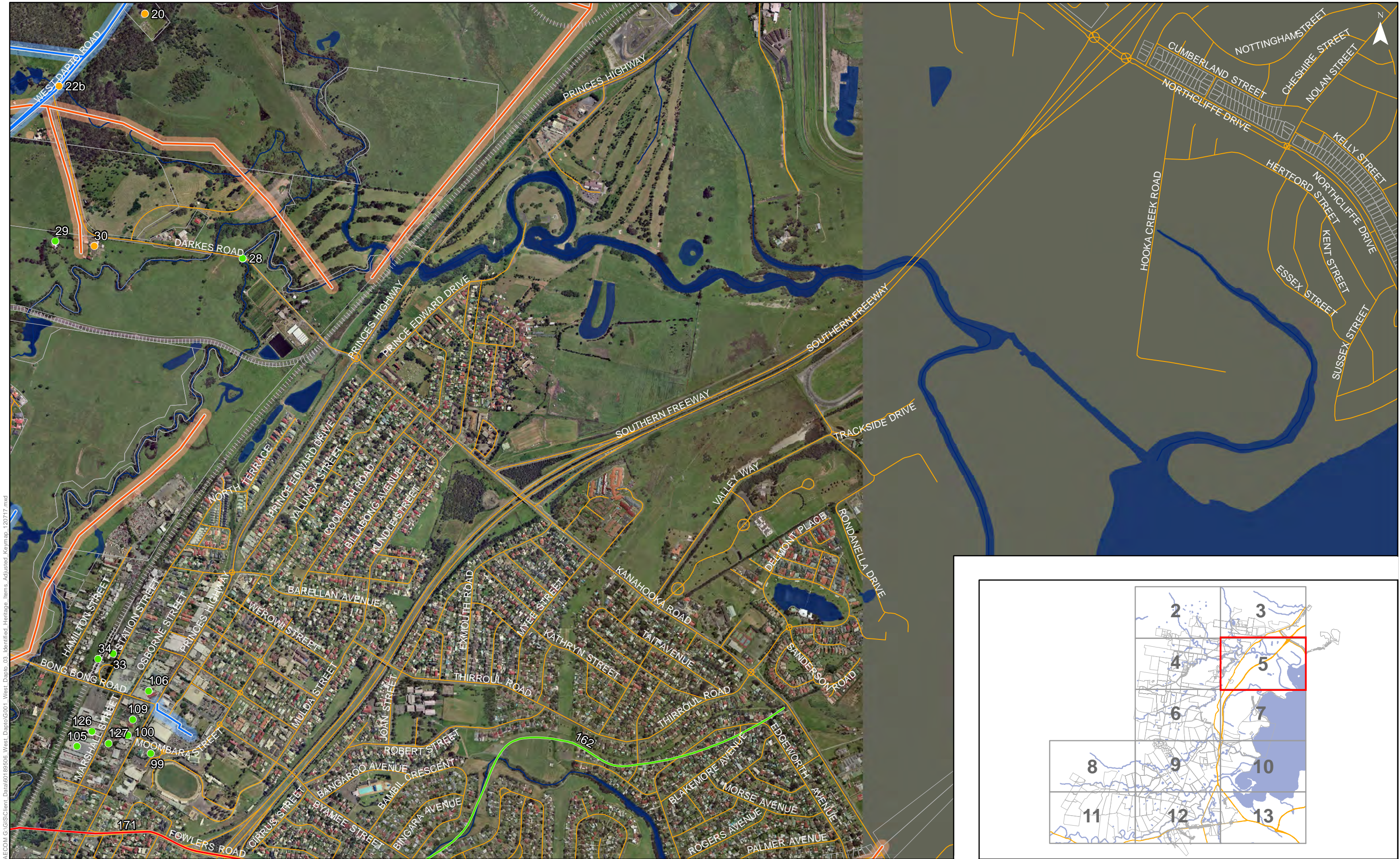
Source: LPMA (2011), AMBS (2010), HLA (2006), Hynd (2005), Navin Officer (2004), HLA (2004)



WEST DAPTO RELEASE AREA

21/07/2012

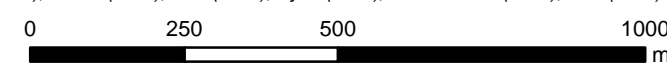
60189506

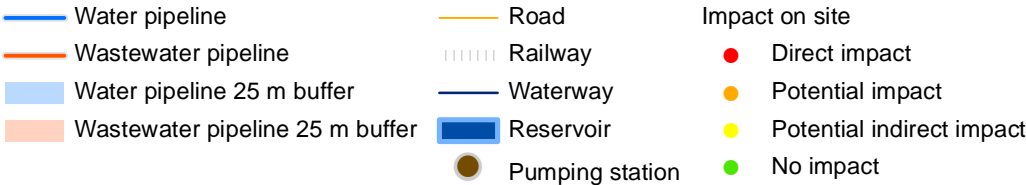
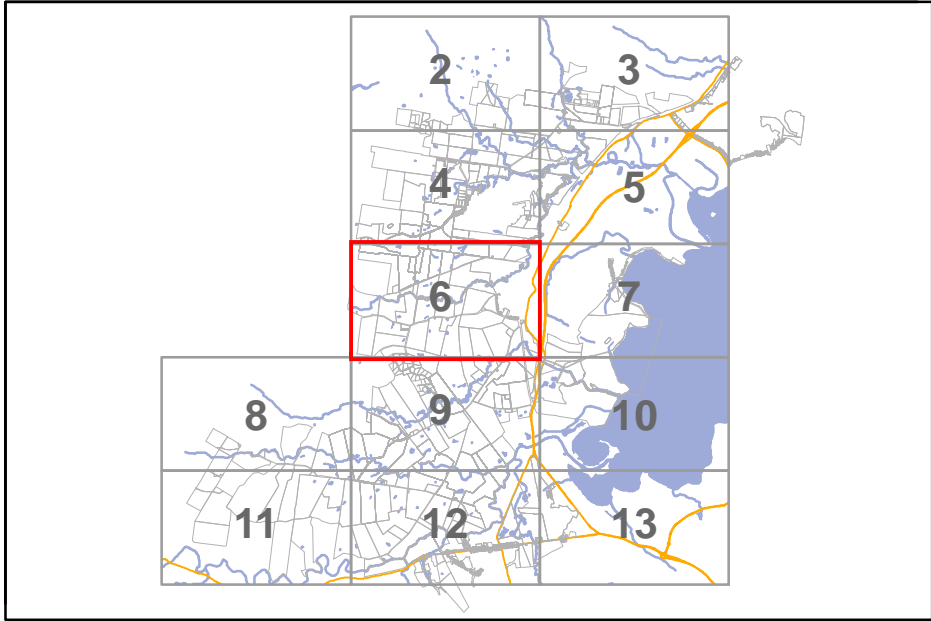


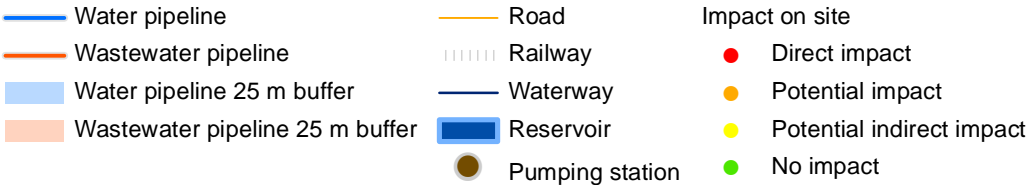
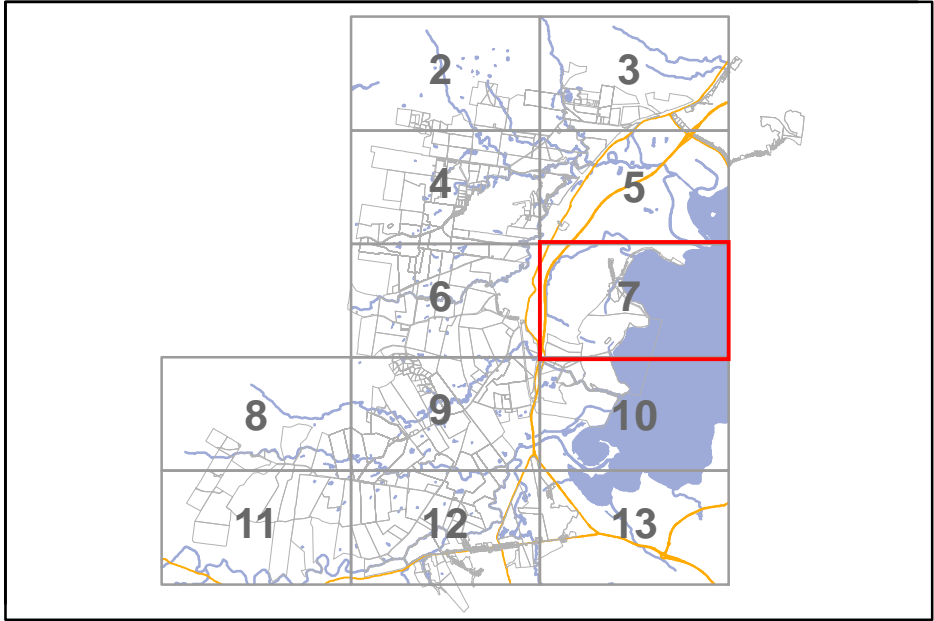
- | | | |
|---------------------------------|-----------------|---------------------------|
| Water pipeline | Road | Impact on site |
| Wastewater pipeline | Railway | Direct impact |
| Water pipeline 25 m buffer | Waterway | Potential impact |
| Wastewater pipeline 25 m buffer | Reservoir | Potential indirect impact |
| | Pumping station | No impact |

WEST DAPTO RELEASE AREA
IDENTIFIED HERITAGE ITEMS IN RELATION TO THE PROPOSED WATER AND WASTEWATER SERVICES

Source: LPMA (2011), AMBS (2010), HLA (2006), Hynd (2005), Navin Officer (2004), HLA (2004)

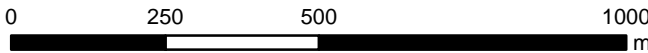




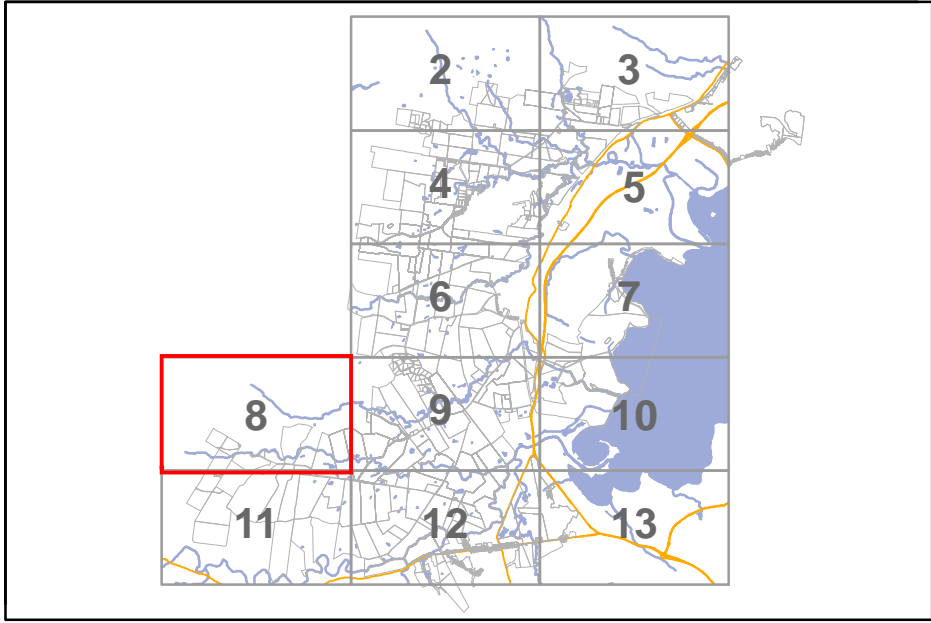


WEST DAPTO RELEASE AREA
IDENTIFIED HERITAGE ITEMS IN RELATION TO THE PROPOSED WATER AND WASTEWATER SERVICES

Source: LPMA (2011), AMBS (2010), HLA (2006), Hynd (2005), Navin Officer (2004), HLA (2004)



21/07/2012
60189506



- | | | |
|---------------------------------|-----------------|---------------------------|
| Water pipeline | Road | Impact on site |
| Wastewater pipeline | Railway | Direct impact |
| Water pipeline 25 m buffer | Waterway | Potential impact |
| Wastewater pipeline 25 m buffer | Reservoir | Potential indirect impact |
| | Pumping station | No impact |