

WEST DAPTO RELEASE AREA
REVISED CURTILAGES IN RELATION TO THE PROPOSED WATER AND WASTEWATER SERVICES
 Source: LPMA (2011)



24/07/2012

60189506



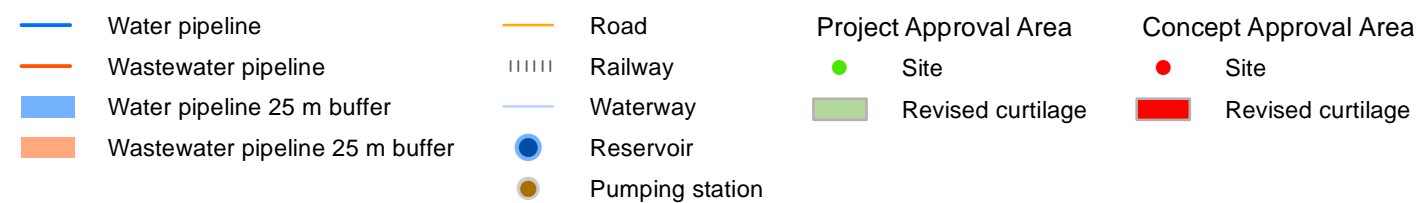
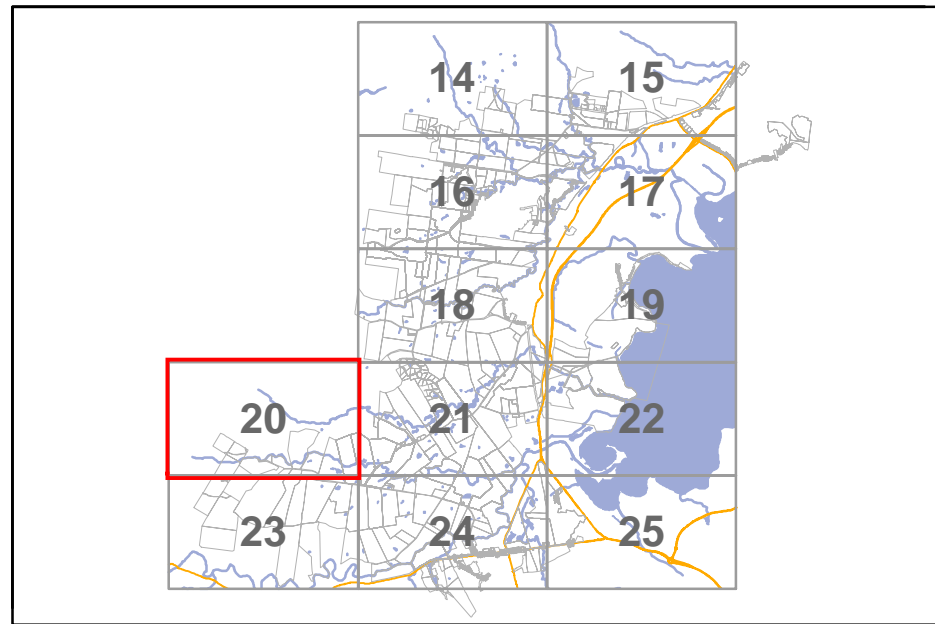
- | | | | | | | | |
|--|---------------------------------|--|-----------------|--|----------------------------|--|----------------------------|
| | Water pipeline | | Road | | Project Approval Area Site | | Concept Approval Area Site |
| | Wastewater pipeline | | Railway | | Revised curtilage | | Revised curtilage |
| | Water pipeline 25 m buffer | | Waterway | | | | |
| | Wastewater pipeline 25 m buffer | | Reservoir | | | | |
| | | | Pumping station | | | | |

WEST DAPTO RELEASE AREA
REVISED CURTILAGES IN RELATION TO THE PROPOSED WATER AND WASTEWATER SERVICES
 Source: LPMA (2011)



24/07/2012

60189506



WEST DAPTO RELEASE AREA
REVISED CURTILAGES IN RELATION TO THE PROPOSED WATER AND WASTEWATER SERVICES
 Source: LPMA (2011)



25/07/2012

60189506

Fig. **20**

