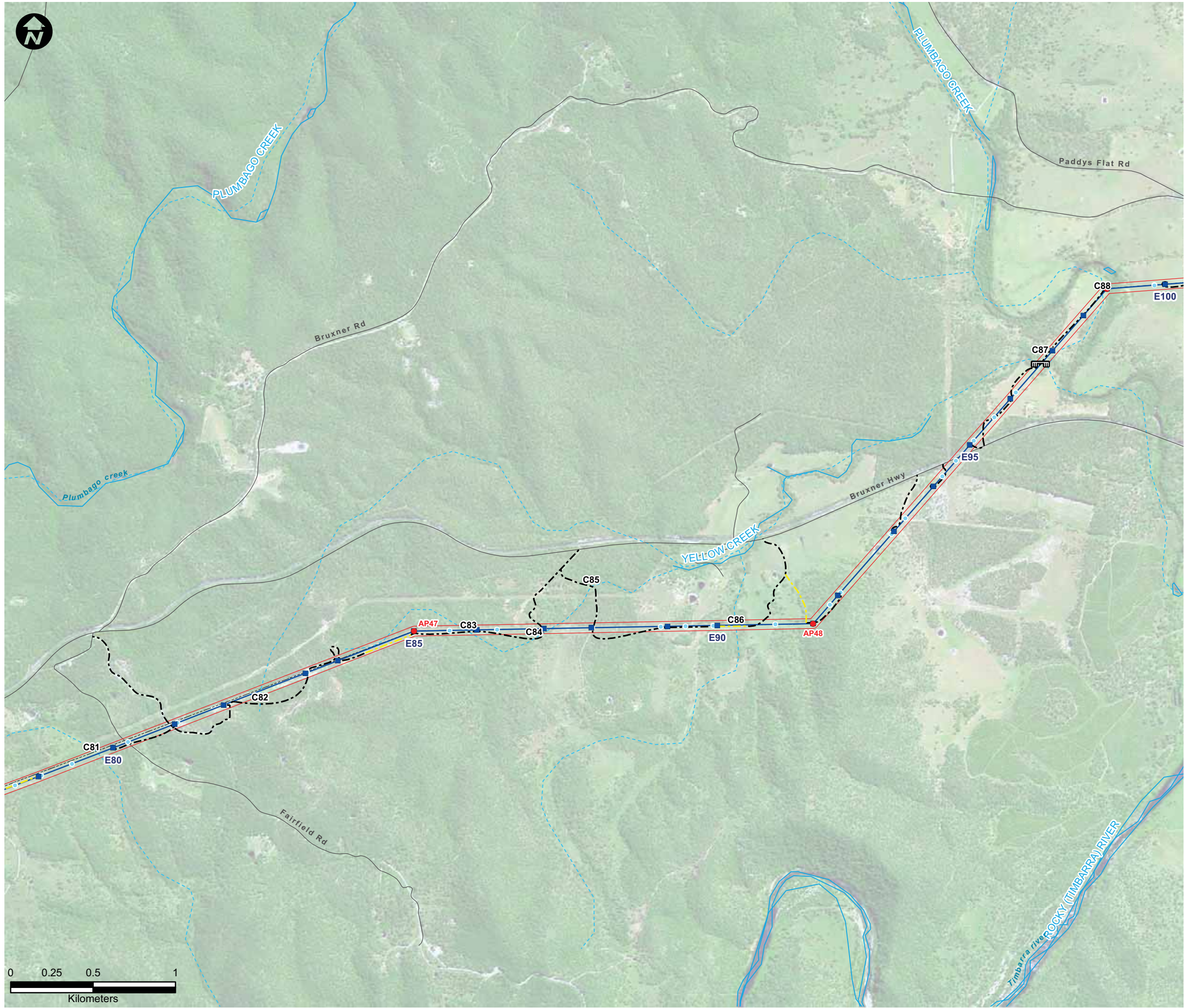
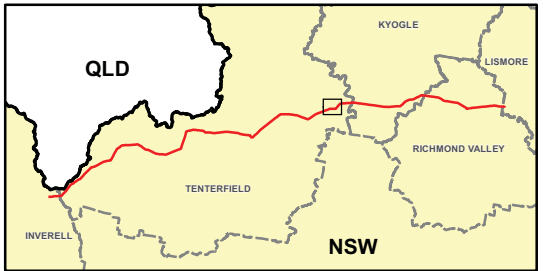


This drawing is subject to COPYRIGHT. It remains the property of URS Australia Pty Ltd.



**LEGEND:**

- Existing 96L 132kV Structure Locations<sup>^</sup>
- Existing Transmission Lines<sup>^</sup>
- Proposed 330kV Angle Positions (Indicative)<sup>^</sup>
- Proposed 330kV Structure Locations (Indicative)<sup>^</sup>
- Proposed 330kV Centreline<sup>^</sup>
- Proposed 330kV Easement<sup>^</sup>
- Substation/Switching Station
- Roads
- Waterways<sup>+</sup>:**
  - Major / Permanent Flow
  - Major / Intermittent Flow
  - Minor / Intermittent Flow
- Access Tracks<sup>+</sup>:**
  - Category 1
  - Category 2
  - Category 3
- C11** Identified or Potential Waterway Crossing Locations
  - Creek Crossing (New)
  - Creek Crossing (Upgrade Required)
  - Aquatic Ecological Community of the Lowland Catchment of the Darling River (AECDR)
- NSW DPI FFRD Threatened Species Records<sup>#</sup>:**
  - Maccullochella ikei*
  - Mogurnda adspersa*
- Endangered Populations<sup>#</sup>:**
  - Ambassis agassizii*
  - Tandanus tandanus*
- Commonwealth EPBC Act Listed Species<sup>~</sup>:**
  - Maccullochella peelii peelii*



Symbols and lines used in this figure are indicative and are not intended to reflect actual size of represented features.  
Symbols and lines have been enhanced to aid visibility.

Source: Aerial Imagery from TransGrid 2009.  
<sup>^</sup> TransGrid 2010  
<sup>+</sup> Commonwealth of Australia (Geoscience Australia) 2010  
<sup>\*</sup> Refer to Table B-1 for access track classifications  
<sup>#</sup> Fresh Water Fish Research Database - Dr Dean Gilligan, 2011 and John F. Pursey  
<sup>~</sup> Digitised from DPI's online Fishing and Aquaculture Records Viewer (<http://www.dpi.nsw.gov.au/fisheries/species-protection/records/viewer>)

Drawn: SB/STB | Approved: KT | Date: 07/03/2012

Job No.: 43177662 | File No.: 43177662.140-4.mxd

Client  
TransGrid

Project  
FAR NORTH NSW  
(DUMARESQ - LISMORE  
330kV TRANSMISSION LINE)  
PROJECT

Title  
SURFACE WATER AND  
HYDROLOGY MAPPING SERIES  
(REVISED)

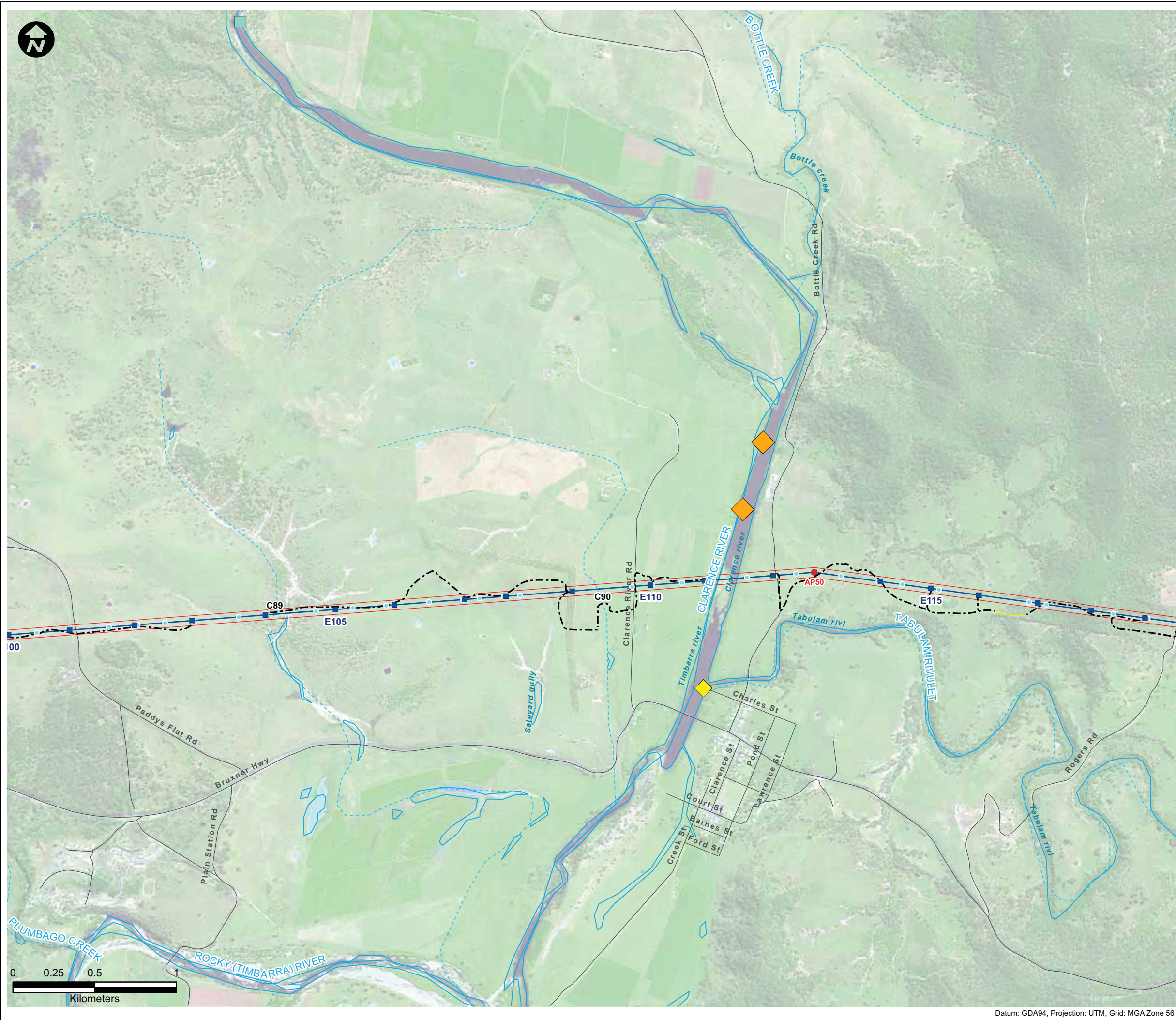
Figure: 2u



Datum: GDA94, Projection: UTM, Grid: MGA Zone 56



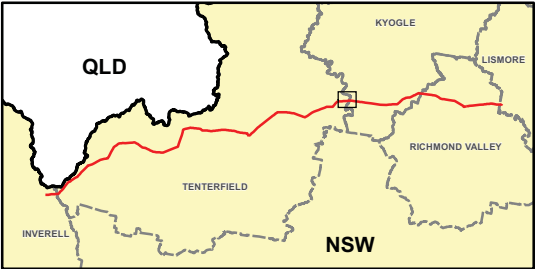
This drawing is subject to COPYRIGHT. It remains the property of URS Australia Pty Ltd.



Datum: GDA94, Projection: UTM, Grid: MGA Zone 56

**LEGEND:**

- Existing 96L 132kV Structure Locations<sup>^</sup>
- Existing Transmission Lines<sup>^</sup>
- Proposed 330kV Angle Positions (Indicative)<sup>^</sup>
- Proposed 330kV Structure Locations (Indicative)<sup>^</sup>
- Proposed 330kV Centreline<sup>^</sup>
- Proposed 330kV Easement<sup>^</sup>
- Substation/Switching Station
- Roads
- Waterways<sup>+</sup>:**
  - Major / Permanent Flow
  - Major / Intermittent Flow
  - Minor / Intermittent Flow
- Access Tracks<sup>+</sup>:**
  - Category 1
  - Category 2
  - Category 3
- C11** Identified or Potential Waterway Crossing Locations
  - Creek Crossing (New)
  - Creek Crossing (Upgrade Required)
  - Aquatic Ecological Community of the Lowland Catchment of the Darling River (AECDR)
- NSW DPI FFRD Threatened Species Records<sup>#</sup>:**
  - Maccullochella ikei*
  - Mogurnda adspersa*
- Endangered Populations<sup>#</sup>:**
  - Ambassis agassizii*
  - Tandanus tandanus*
- Commonwealth EPBC Act Listed Species<sup>~</sup>:**
  - Maccullochella peelii peelii*



Symbols and lines used in this figure are indicative and are not intended to reflect actual size of represented features. Symbols and lines have been enhanced to aid visibility.

Source: Aerial Imagery from TransGrid 2009.  
<sup>^</sup> TransGrid 2010  
<sup>+</sup> Commonwealth of Australia (Geoscience Australia) 2010  
<sup>\*</sup> Refer to Table B-1 for access track classifications  
<sup>#</sup> Fresh Water Fish Research Database - Dr Dean Gilligan, 2011 and John F. Pursey  
<sup>~</sup> Digitised from DPI's online Fishing and Aquaculture Records Viewer (<http://www.dpi.nsw.gov.au/fisheries/species-protection/records/viewer>)

Drawn: SB/STB | Approved: KT | Date: 07/03/2012

Job No.: 43177662 | File No.: 43177662.140-4.mxd

Client  
TransGrid

Project  
FAR NORTH NSW  
(DUMARESQ - LISMORE  
330kV TRANSMISSION LINE)  
PROJECT

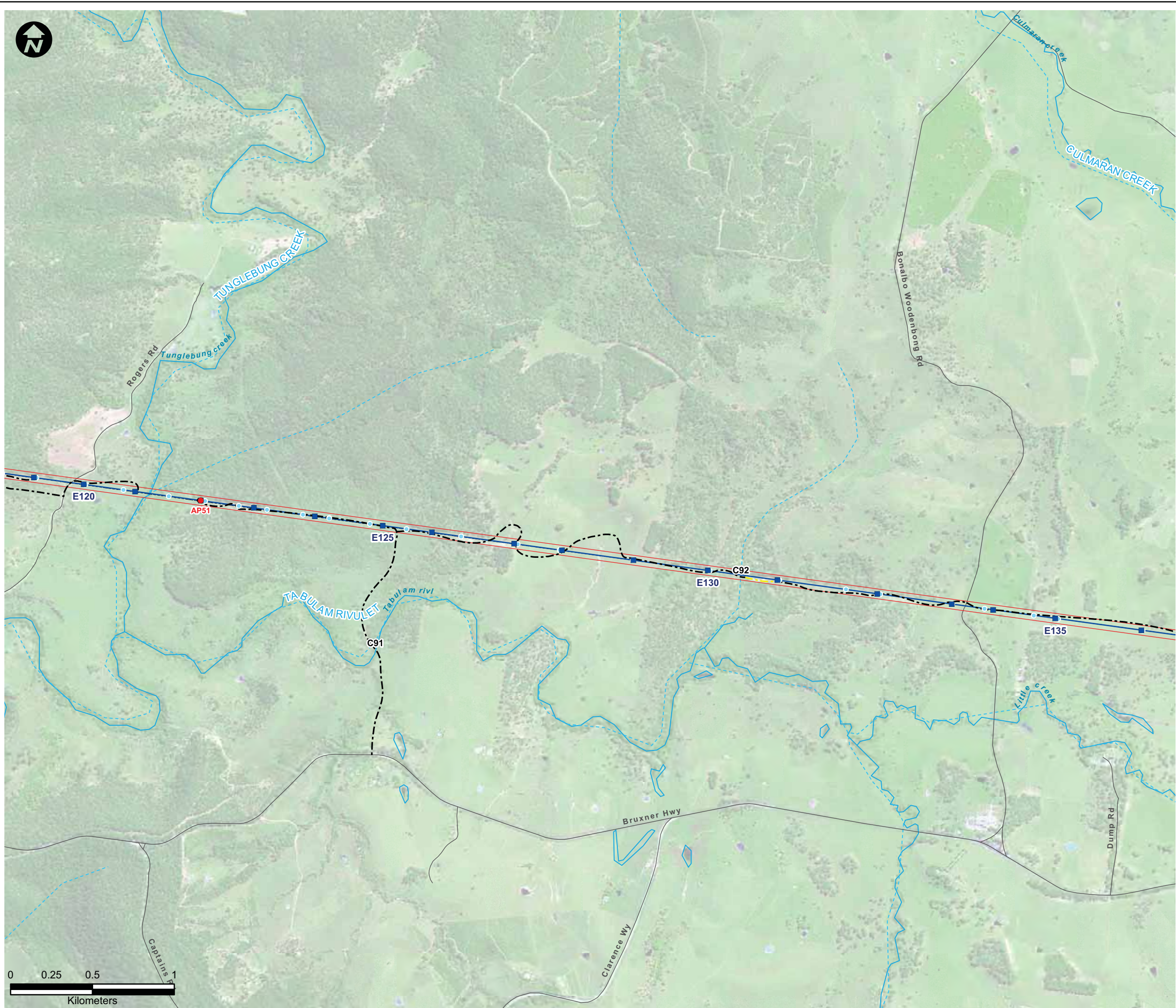
Title  
SURFACE WATER AND  
HYDROLOGY MAPPING SERIES  
(REVISED)

Figure: 2v





This drawing is subject to COPYRIGHT. It remains the property of URS Australia Pty Ltd.



LEGEND:

- Existing 96L 132kV Structure Locations^
- Existing Transmission Lines^
- Proposed 330kV Angle Positions (Indicative)^
- Proposed 330kV Structure Locations (Indicative)^
- Proposed 330kV Centreline^
- Proposed 330kV Easement^
- Substation/Switching Station
- Roads

Waterways\*:

- Major / Permanent Flow
- Major / Intermittent Flow
- Minor / Intermittent Flow

Access Tracks\*:

- Category 1
- Category 2
- Category 3

C11 Identified or Potential Waterway Crossing Locations

- Creek Crossing (New)
- Creek Crossing (Upgrade Required)
- Aquatic Ecological Community of the Lowland Catchment of the Darling River (AECDR)

NSW DPI FFRD Threatened Species Records#:

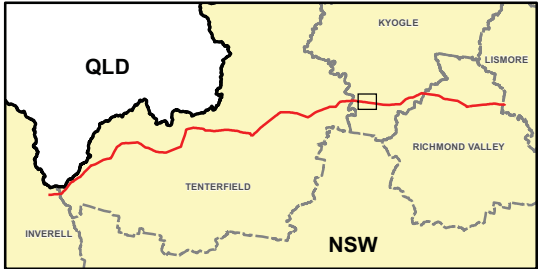
- Maccullochella ikei
- Mogurnda adspersa

Endangered Populations#:

- Ambassis agassizii
- Tandanus tandanus

Commonwealth EPBC Act Listed Species~:

- Maccullochella peelii peelii



Symbols and lines used in this figure are indicative and are not intended to reflect actual size of represented features. Symbols and lines have been enhanced to aid visibility.

Source: Aerial Imagery from TransGrid 2009.

^ TransGrid 2010

+ Commonwealth of Australia (Geoscience Australia) 2010

\* Refer to Table B-1 for access track classifications

# Fresh Water Fish Research Database - Dr Dean Gilligan, 2011

and John F. Pursey

~ Digitised from DPI's online Fishing and Aquaculture Records Viewer

(<http://www.dpi.nsw.gov.au/fisheries/species-protection/records/viewer>)

Drawn: SB/STB | Approved: KT | Date: 07/03/2012

Job No.: 43177662 | File No.: 43177662.140-4.mxd

Client: TransGrid

Project: FAR NORTH NSW (DUMARESQ - LISMORE) 330kV TRANSMISSION LINE) PROJECT

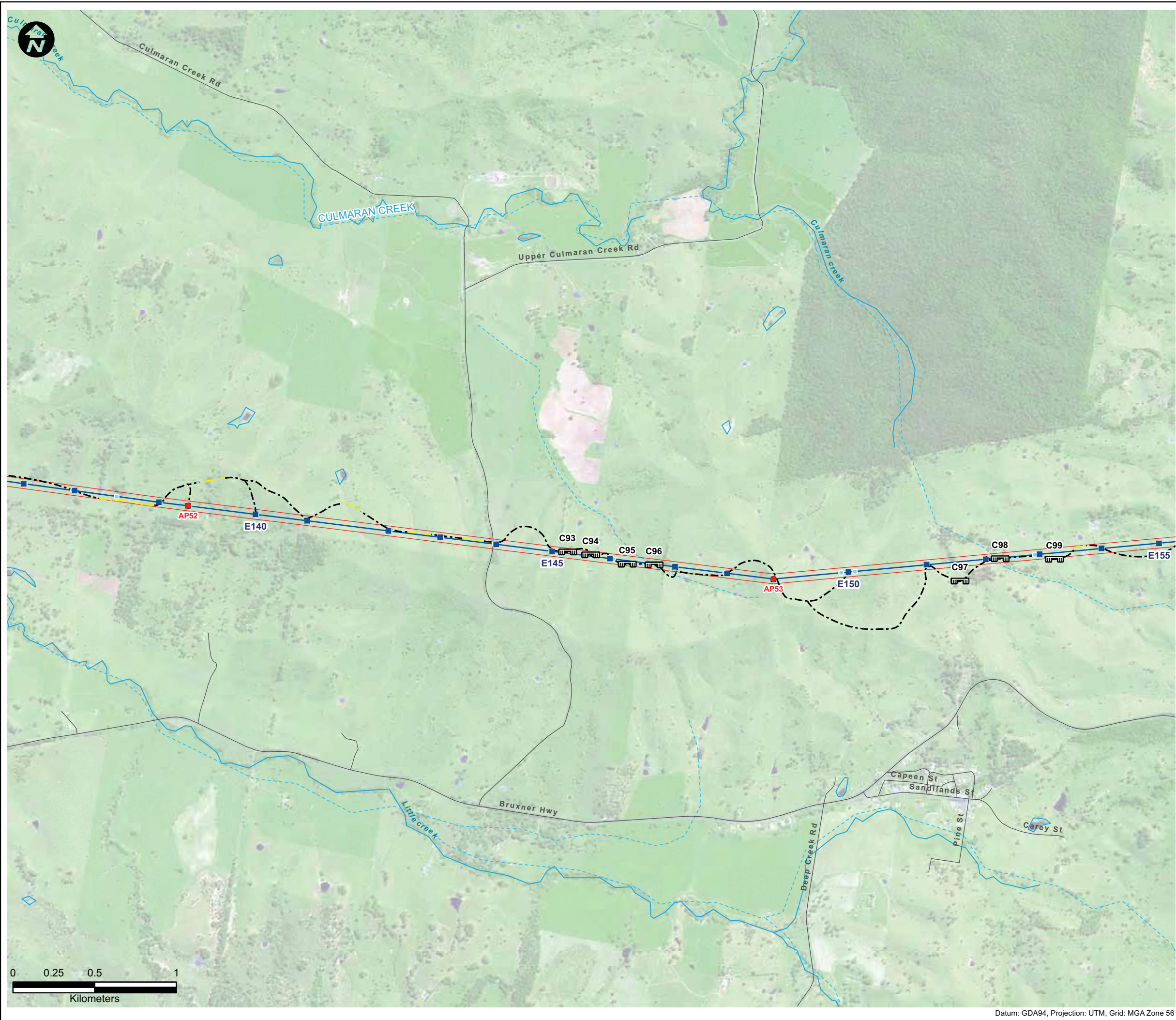
Title: SURFACE WATER AND HYDROLOGY MAPPING SERIES (REVISED)

Figure: 2w





This drawing is subject to COPYRIGHT. It remains the property of URS Australia Pty Ltd.



**LEGEND:**

- Existing 96L 132kV Structure Locations<sup>^</sup>
- Existing Transmission Lines<sup>^</sup>
- Proposed 330kV Angle Positions (Indicative)<sup>^</sup>
- Proposed 330kV Structure Locations (Indicative)<sup>^</sup>
- Proposed 330kV Centreline<sup>^</sup>
- Proposed 330kV Easement<sup>^</sup>
- Substation/Switching Station
- Roads

**Waterways<sup>+</sup>:**

- Major / Permanent Flow
- Major / Intermittent Flow
- Minor / Intermittent Flow

**Access Tracks<sup>+</sup>:**

- Category 1
- Category 2
- Category 3

**C11 Identified or Potential Waterway Crossing Locations**

- Creek Crossing (New)
- Creek Crossing (Upgrade Required)
- Aquatic Ecological Community of the Lowland Catchment of the Darling River (AECDR)

**NSW DPI FFRD Threatened Species Records<sup>#</sup>:**

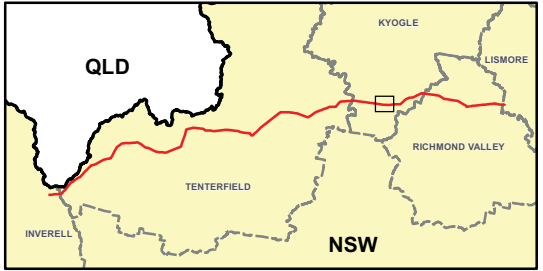
- Maccullochella ikei*
- Mogurnda adspersa*

**Endangered Populations<sup>#</sup>:**

- Ambassis agassizii*
- Tandanus tandanus*

**Commonwealth EPBC Act Listed Species<sup>~</sup>:**

- Maccullochella peelii peelii*



Symbols and lines used in this figure are indicative and are not intended to reflect actual size of represented features.  
Symbols and lines have been enhanced to aid visibility.

Source: Aerial Imagery from TransGrid 2009.

<sup>^</sup> TransGrid 2010

<sup>+</sup> Commonwealth of Australia (Geoscience Australia) 2010

<sup>\*</sup> Refer to Table B-1 for access track classifications

<sup>#</sup> Fresh Water Fish Research Database - Dr Dean Gilligan, 2011

and John F. Pursey

<sup>~</sup> Digitised from DPI's online Fishing and Aquaculture Records Viewer

(<http://www.dpi.nsw.gov.au/fisheries/species-protection/records/viewer>)

Drawn: SB/STB Approved: KT Date: 07/03/2012

Job No.: 43177662 File No.: 43177662.140-4.mxd

Client  
TransGrid

Project  
FAR NORTH NSW  
(DUMARESQ - LISMORE  
330kV TRANSMISSION LINE)  
PROJECT

Title  
SURFACE WATER AND  
HYDROLOGY MAPPING SERIES  
(REVISED)

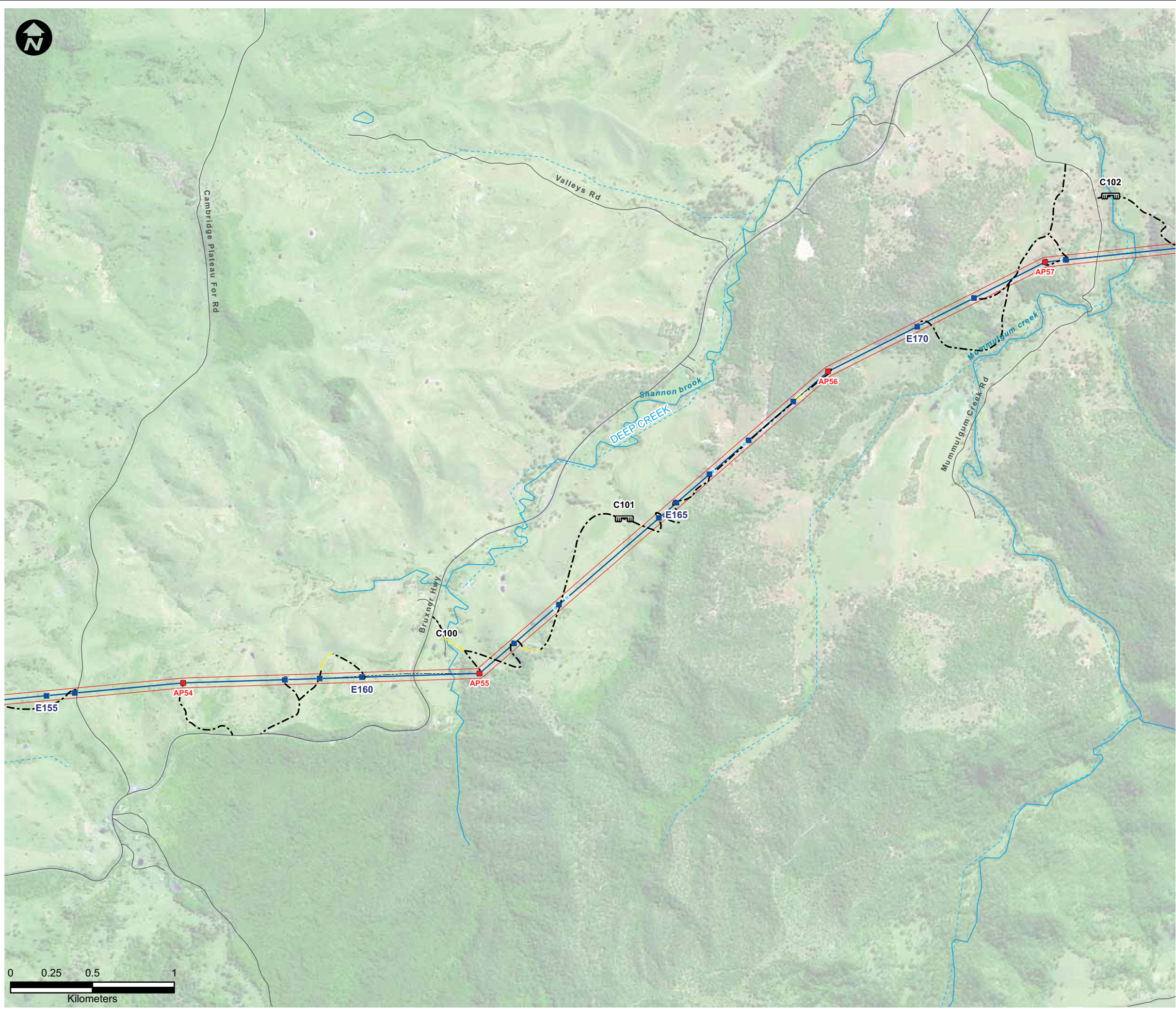
Figure: 2x



Datum: GDA94, Projection: UTM, Grid: MGA Zone 56

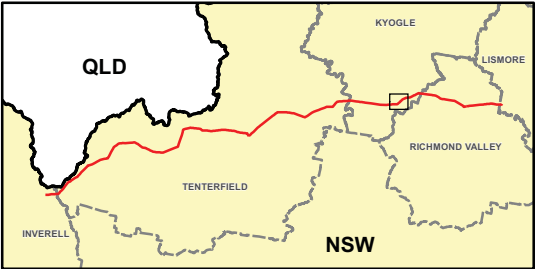


This drawing is subject to COPYRIGHT. It remains the property of URS Australia Pty Ltd.




**LEGEND:**

- Existing 96L 132kV Structure Locations<sup>^</sup>
- Existing Transmission Lines<sup>^</sup>
- Proposed 330kV Angle Positions (Indicative)<sup>^</sup>
- Proposed 330kV Structure Locations (Indicative)<sup>^</sup>
- Proposed 330kV Centreline<sup>^</sup>
- Proposed 330kV Easement<sup>^</sup>
- Substation/Switching Station
- Roads
- Waterways<sup>+</sup>:**
  - Major / Permanent Flow
  - Major / Intermittent Flow
  - Minor / Intermittent Flow
- Access Tracks<sup>+</sup>:**
  - Category 1
  - Category 2
  - Category 3
- C11** Identified or Potential Waterway Crossing Locations
  - Creek Crossing (New)
  - Creek Crossing (Upgrade Required)
- Aquatic Ecological Community of the Lowland Catchment of the Darling River (AECDR)
- NSW DPI FFRD Threatened Species Records<sup>#</sup>:**
  - Maccullochella ikei*
  - Mogurnda adspersa*
- Endangered Populations<sup>#</sup>:**
  - Ambassis agassizii*
  - Tandanus tandanus*
- Commonwealth EPBC Act Listed Species<sup>~</sup>:**
  - Maccullochella peelii peelii*



Symbols and lines used in this figure are indicative and are not intended to reflect actual size of represented features.  
Symbols and lines have been enhanced to aid visibility.

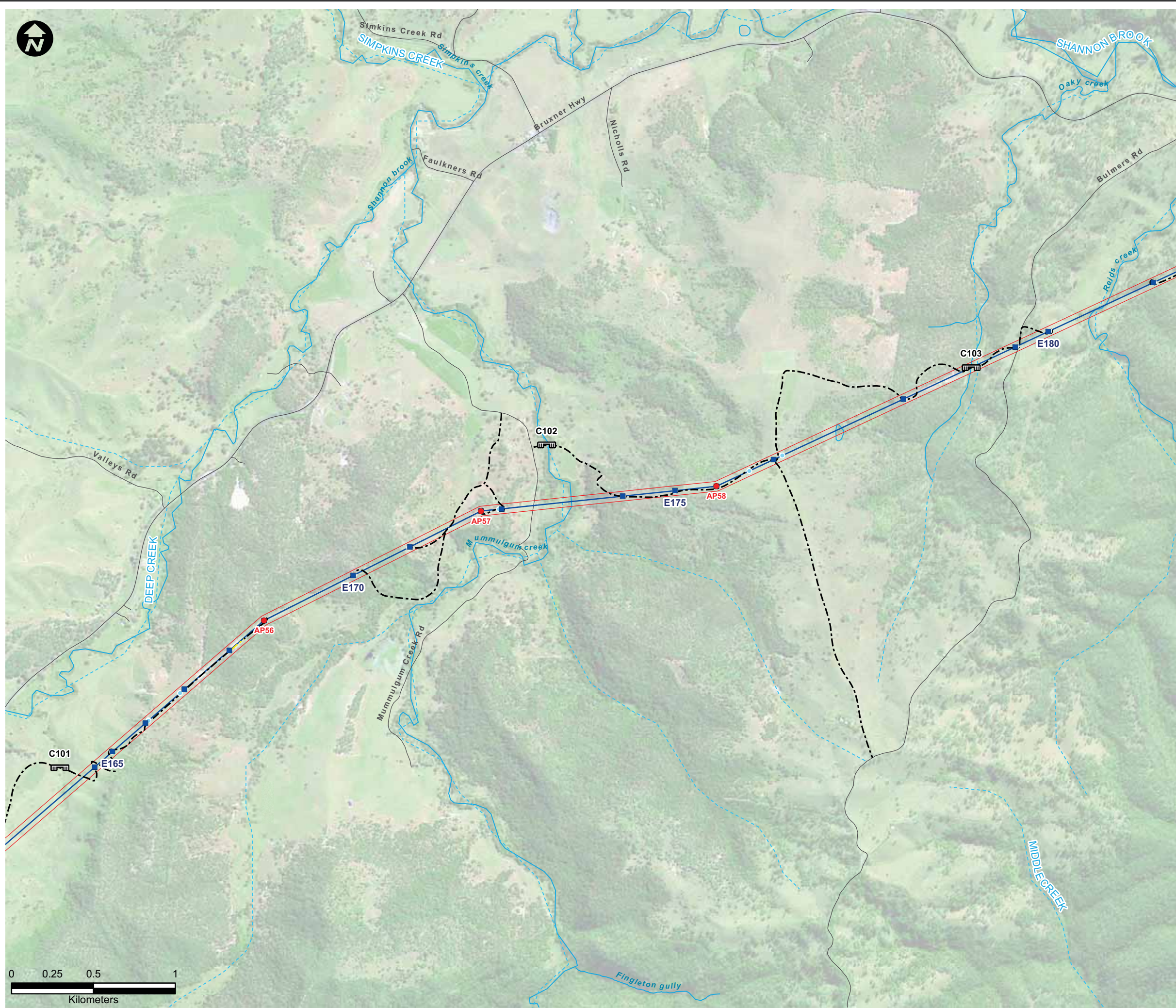
Source: Aerial Imagery from TransGrid 2009.  
<sup>^</sup> TransGrid 2010  
<sup>+</sup> Commonwealth of Australia (Geoscience Australia) 2010  
<sup>\*</sup> Refer to Table B-1 for access track classifications  
<sup>#</sup> Fresh Water Fish Research Database - Dr Dean Gilligan, 2011 and John F. Pursey  
<sup>~</sup> Digitised from DPI's online Fishing and Aquaculture Records Viewer (<http://www.dpi.nsw.gov.au/fisheries/species-protection/records/viewer>)

Drawn: SB/STB	Approved: KT	Date: 07/03/2012
Job No.: 43177662		File No.:43177662.140-4.mxd
Client TransGrid		
Project FAR NORTH NSW (DUMARESQ - LISMORE 330kV TRANSMISSION LINE) PROJECT		
Title SURFACE WATER AND HYDROLOGY MAPPING SERIES (REVISED)		
Figure: 2y		
		

Datum: GDA94, Projection: UTM, Grid: MGA Zone 56



This drawing is subject to COPYRIGHT. It remains the property of URS Australia Pty Ltd.



Datum: GDA94, Projection: UTM, Grid: MGA Zone 56

**LEGEND:**

- Existing 96L 132kV Structure Locations<sup>^</sup>
- Existing Transmission Lines<sup>^</sup>
- Proposed 330kV Angle Positions (Indicative)<sup>^</sup>
- Proposed 330kV Structure Locations (Indicative)<sup>^</sup>
- Proposed 330kV Centreline<sup>^</sup>
- Proposed 330kV Easement<sup>^</sup>
- Substation/Switching Station
- Roads

**Waterways<sup>+</sup>:**

- Major / Permanent Flow
- Major / Intermittent Flow
- Minor / Intermittent Flow

**Access Tracks<sup>+</sup>:**

- Category 1
- Category 2
- Category 3

**C11 Identified or Potential Waterway Crossing Locations**

- Creek Crossing (New)
- Creek Crossing (Upgrade Required)
- Aquatic Ecological Community of the Lowland Catchment of the Darling River (AECDR)

**NSW DPI FFRD Threatened Species Records<sup>#</sup>:**

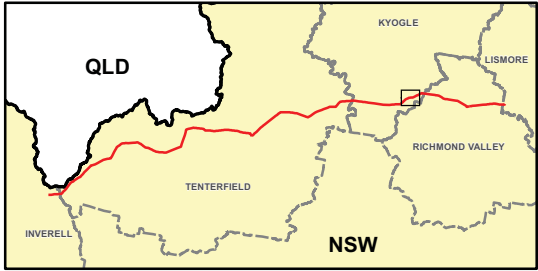
- Maccullochella ikei*
- Mogurnda adspersa*

**Endangered Populations<sup>#</sup>:**

- Ambassis agassizii*
- Tandanus tandanus*

**Commonwealth EPBC Act Listed Species<sup>~</sup>:**

- Maccullochella peelii peelii*



Symbols and lines used in this figure are indicative and are not intended to reflect actual size of represented features.  
Symbols and lines have been enhanced to aid visibility.

Source: Aerial Imagery from TransGrid 2009.

<sup>^</sup> TransGrid 2010

<sup>+</sup> Commonwealth of Australia (Geoscience Australia) 2010

<sup>\*</sup> Refer to Table B-1 for access track classifications

<sup>#</sup> Fresh Water Fish Research Database - Dr Dean Gilligan, 2011

and John F. Pursey

<sup>~</sup> Digitised from DPI's online Fishing and Aquaculture Records Viewer (<http://www.dpi.nsw.gov.au/fisheries/species-protection/records/viewer>)

Drawn: SB/STB | Approved: KT | Date: 07/03/2012

Job No.: 43177662 | File No.: 43177662.140-4.mxd

Client  
TransGrid

Project  
FAR NORTH NSW  
(DUMARESQ - LISMORE  
330kV TRANSMISSION LINE)  
PROJECT

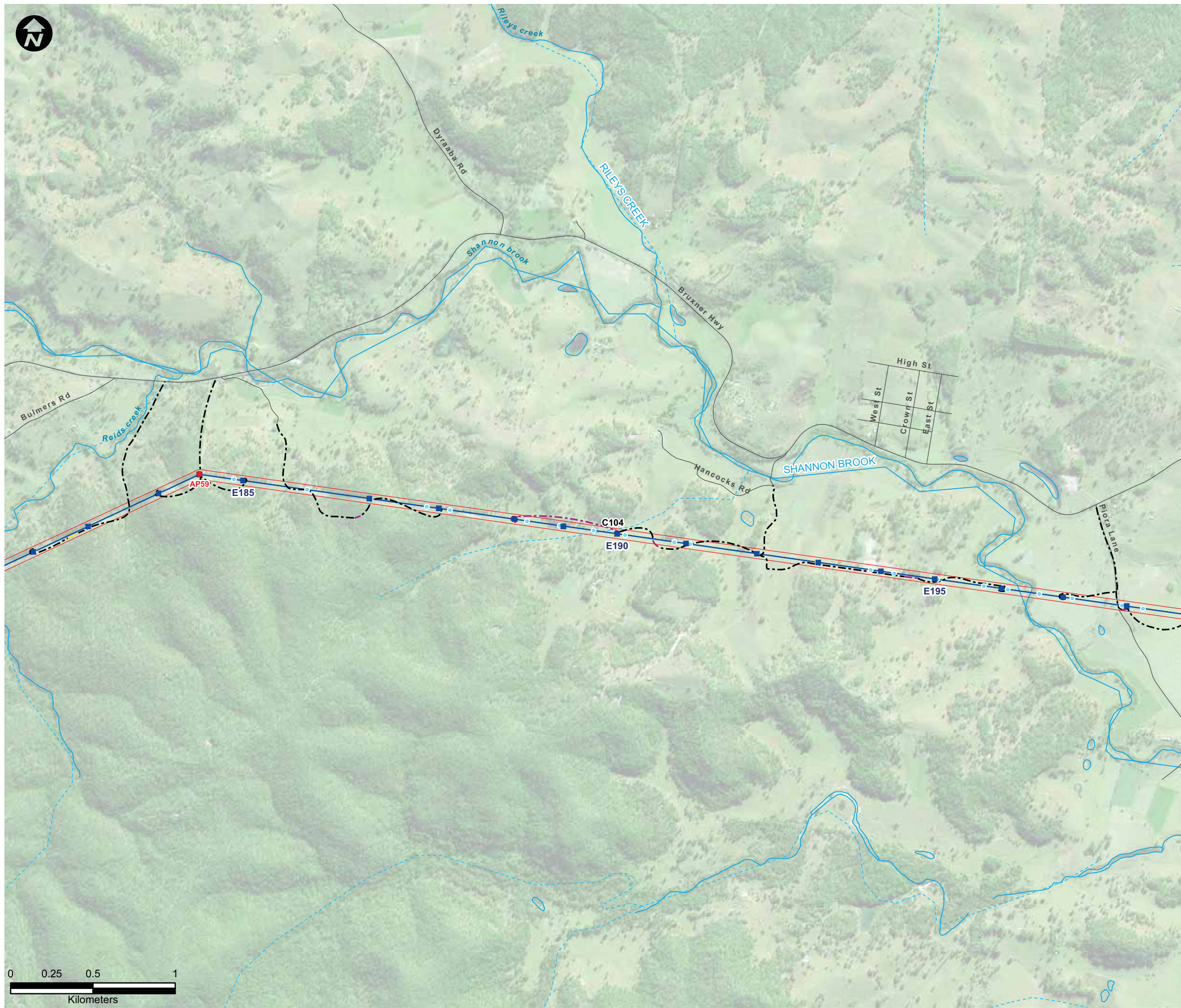
Title  
SURFACE WATER AND  
HYDROLOGY MAPPING SERIES  
(REVISED)

Figure: 2z

**URS**



This drawing is subject to COPYRIGHT. It remains the property of URS Australia Pty Ltd.



Datum: GDA94, Projection: UTM, Grid: MGA Zone 56

**LEGEND:**

- Existing 96L 132kV Structure Locations<sup>^</sup>
- Existing Transmission Lines<sup>^</sup>
- Proposed 330kV Angle Positions (Indicative)<sup>^</sup>
- Proposed 330kV Structure Locations (Indicative)<sup>^</sup>
- Proposed 330kV Centreline<sup>^</sup>
- Proposed 330kV Easement<sup>^</sup>
- Substation/Switching Station
- Roads

**Waterways<sup>+</sup>:**

- Major / Permanent Flow
- Major / Intermittent Flow
- Minor / Intermittent Flow

**Access Tracks<sup>+</sup>:**

- Category 1
- Category 2
- Category 3

**C11 Identified or Potential Waterway Crossing Locations**

- Creek Crossing (New)
- Creek Crossing (Upgrade Required)
- Aquatic Ecological Community of the Lowland Catchment of the Darling River (AECDR)

**NSW DPI FFRD Threatened Species Records<sup>#</sup>:**

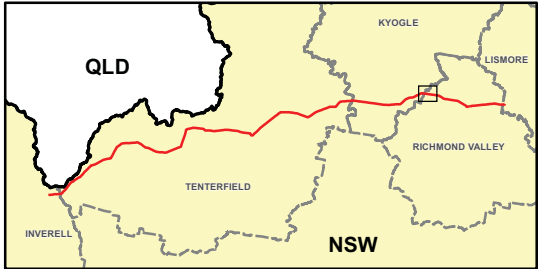
- Maccullochella ikei*
- Mogurnda adspersa*

**Endangered Populations<sup>#</sup>:**

- Ambassis agassizii*
- Tandanus tandanus*

**Commonwealth EPBC Act Listed Species<sup>~</sup>:**

- Maccullochella peelii peelii*



Symbols and lines used in this figure are indicative and are not intended to reflect actual size of represented features.  
Symbols and lines have been enhanced to aid visibility.

Source: Aerial Imagery from TransGrid 2009.

<sup>^</sup> TransGrid 2010

<sup>+</sup> Commonwealth of Australia (Geoscience Australia) 2010

<sup>\*</sup> Refer to Table B-1 for access track classifications

<sup>#</sup> Fresh Water Fish Research Database - Dr Dean Gilligan, 2011

and John F. Pursey

<sup>~</sup> Digitised from DPI's online Fishing and Aquaculture Records Viewer

(<http://www.dpi.nsw.gov.au/fisheries/species-protection/records/viewer>)

Drawn: SB/STB | Approved: KT | Date: 07/03/2012

Job No.: 43177662 | File No.: 43177662.140-4.mxd

Client  
TransGrid

Project  
FAR NORTH NSW  
(DUMARESQ - LISMORE  
330kV TRANSMISSION LINE)  
PROJECT

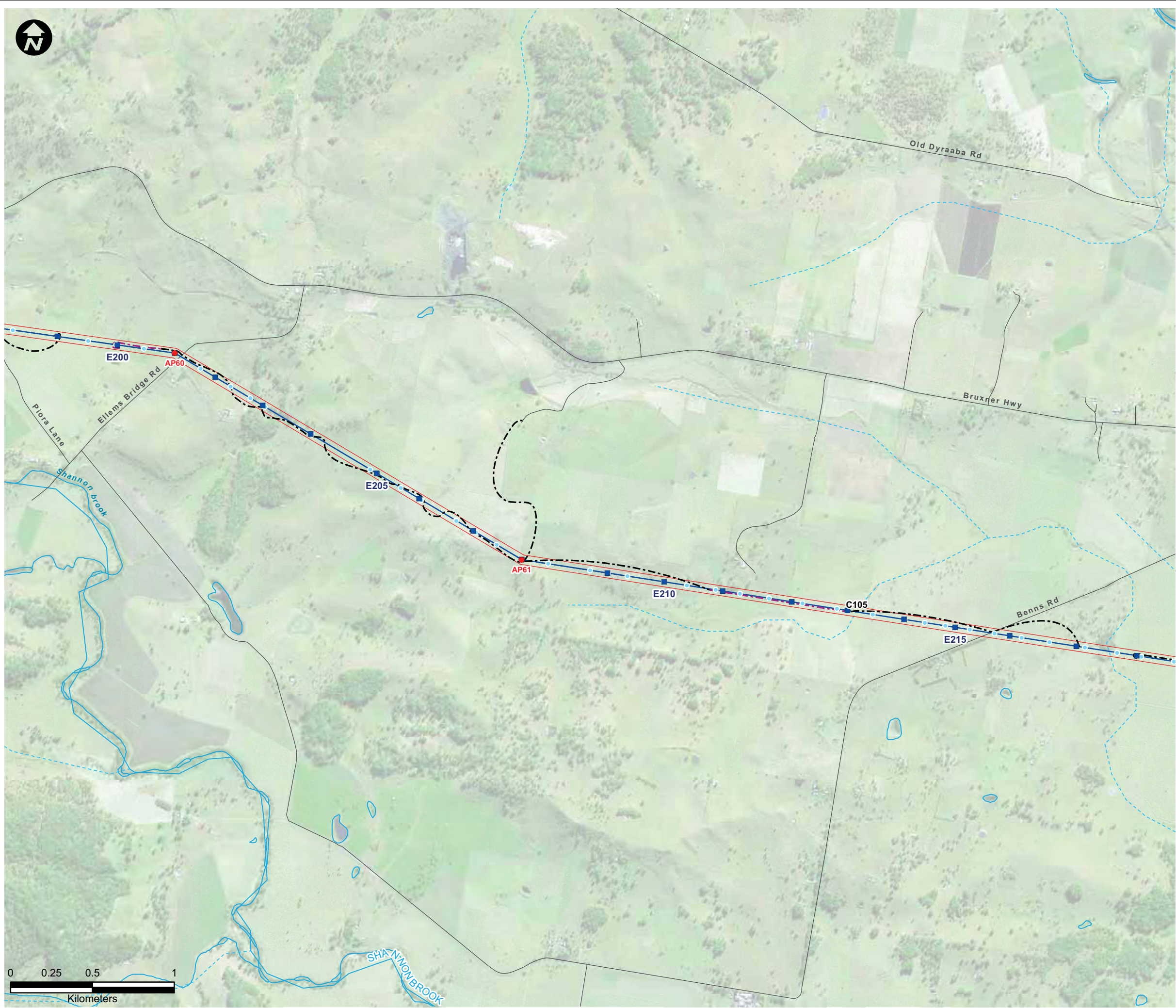
Title  
SURFACE WATER AND  
HYDROLOGY MAPPING SERIES  
(REVISED)

Figure: 2aa

**URS**



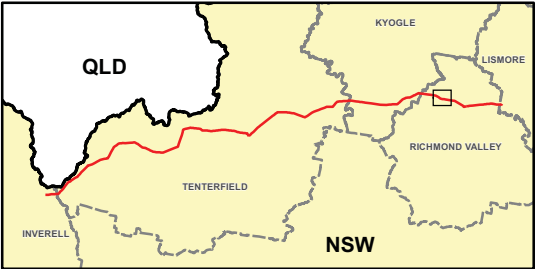
This drawing is subject to COPYRIGHT. It remains the property of URS Australia Pty Ltd.



Datum: GDA94, Projection: UTM, Grid: MGA Zone 56

**LEGEND:**

- Existing 96L 132kV Structure Locations<sup>^</sup>
- Existing Transmission Lines<sup>^</sup>
- Proposed 330kV Angle Positions (Indicative)<sup>^</sup>
- Proposed 330kV Structure Locations (Indicative)<sup>^</sup>
- Proposed 330kV Centreline<sup>^</sup>
- Proposed 330kV Easement<sup>^</sup>
- Substation/Switching Station
- Roads
- Waterways<sup>+</sup>:**
  - Major / Permanent Flow
  - Major / Intermittent Flow
  - Minor / Intermittent Flow
- Access Tracks<sup>+</sup>:**
  - Category 1
  - Category 2
  - Category 3
- C11** Identified or Potential Waterway Crossing Locations
  - Creek Crossing (New)
  - Creek Crossing (Upgrade Required)
  - Aquatic Ecological Community of the Lowland Catchment of the Darling River (AECDR)
- NSW DPI FFRD Threatened Species Records<sup>#</sup>:**
  - Maccullochella ikei*
  - Mogurnda adspersa*
- Endangered Populations<sup>#</sup>:**
  - Ambassis agassizii*
  - Tandanus tandanus*
- Commonwealth EPBC Act Listed Species<sup>~</sup>:**
  - Maccullochella peelii peelii*



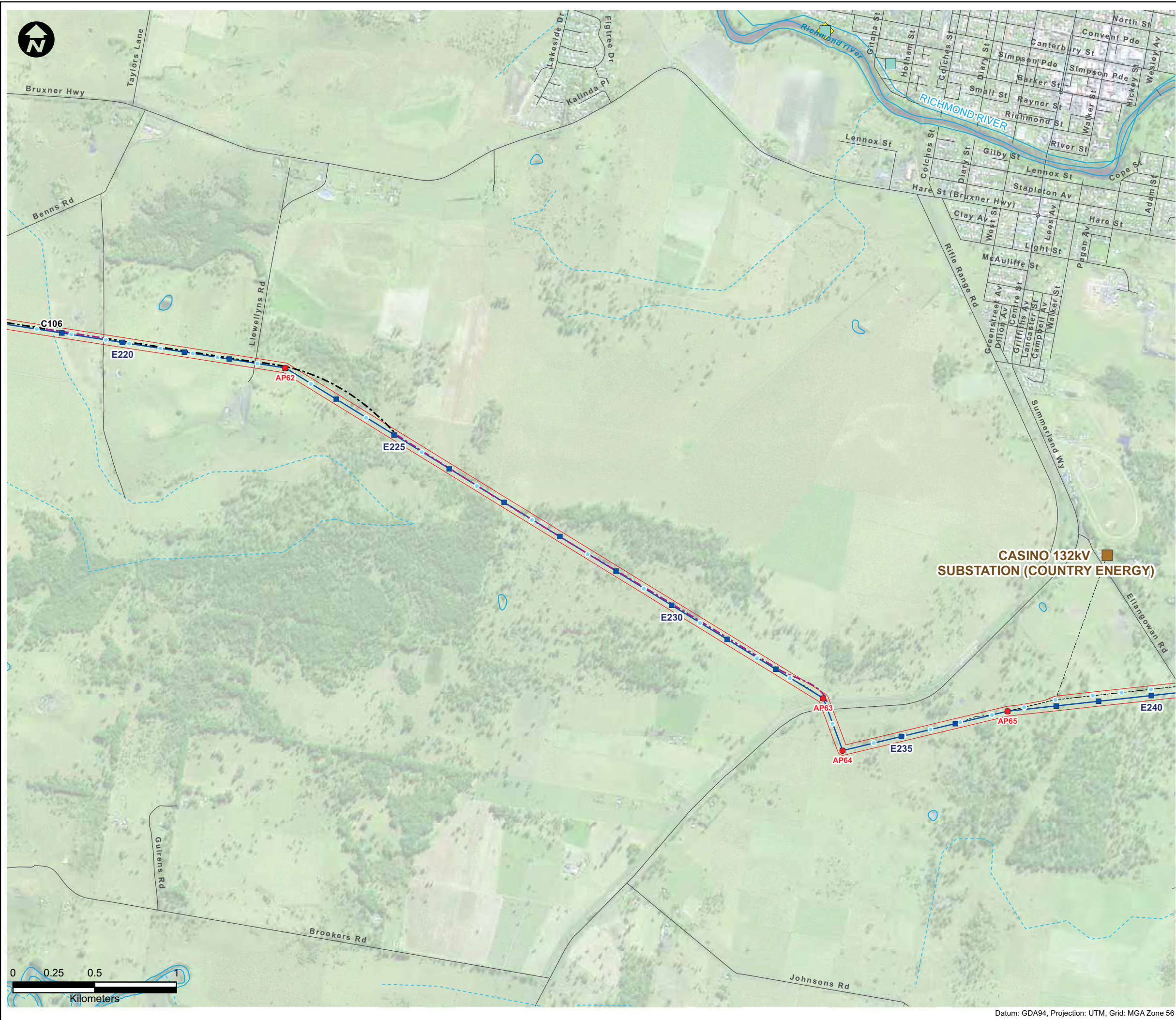
Symbols and lines used in this figure are indicative and are not intended to reflect actual size of represented features.  
Symbols and lines have been enhanced to aid visibility.  
Source: Aerial Imagery from TransGrid 2009.  
<sup>^</sup> TransGrid 2010  
<sup>+</sup> Commonwealth of Australia (Geoscience Australia) 2010  
<sup>\*</sup> Refer to Table B-1 for access track classifications  
<sup>#</sup> Fresh Water Fish Research Database - Dr Dean Gilligan, 2011 and John F. Pursey  
<sup>~</sup> Digitised from DPI's online Fishing and Aquaculture Records Viewer (<http://www.dpi.nsw.gov.au/fisheries/species-protection/records/viewer>)

Drawn: SB/STB	Approved: KT	Date: 07/03/2012
Job No.: 43177662		File No.:43177662.140-4.mxd
Client TransGrid		
Project FAR NORTH NSW (DUMARESQ - LISMORE 330kV TRANSMISSION LINE) PROJECT		
Title SURFACE WATER AND HYDROLOGY MAPPING SERIES (REVISED)		
Figure: 2ab		





This drawing is subject to COPYRIGHT. It remains the property of URS Australia Pty Ltd.



**LEGEND:**

- Existing 96L 132kV Structure Locations<sup>^</sup>
- Existing Transmission Lines<sup>^</sup>
- Proposed 330kV Angle Positions (Indicative)<sup>^</sup>
- Proposed 330kV Structure Locations (Indicative)<sup>^</sup>
- Proposed 330kV Centreline<sup>^</sup>
- Proposed 330kV Easement<sup>^</sup>
- Substation/Switching Station
- Roads

**Waterways<sup>~</sup>:**

- Major / Permanent Flow
- Major / Intermittent Flow
- Minor / Intermittent Flow

**Access Tracks<sup>~</sup>:**

- Category 1
- Category 2
- Category 3

**C11** Identified or Potential Waterway Crossing Locations

- Creek Crossing (New)
- Creek Crossing (Upgrade Required)

— Aquatic Ecological Community of the Lowland Catchment of the Darling River (AECDR)

**NSW DPI FFRD Threatened Species Records<sup>#</sup>:**

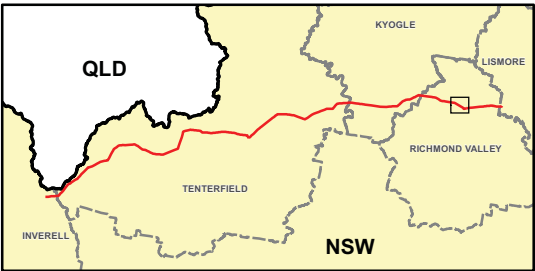
- Maccullochella ikei*
- Mogurnda adspersa*

**Endangered Populations<sup>#</sup>:**

- Ambassis agassizii*
- Tandanus tandanus*


**Commonwealth EPBC Act Listed Species<sup>~</sup>:**

- Maccullochella peelii peelii*



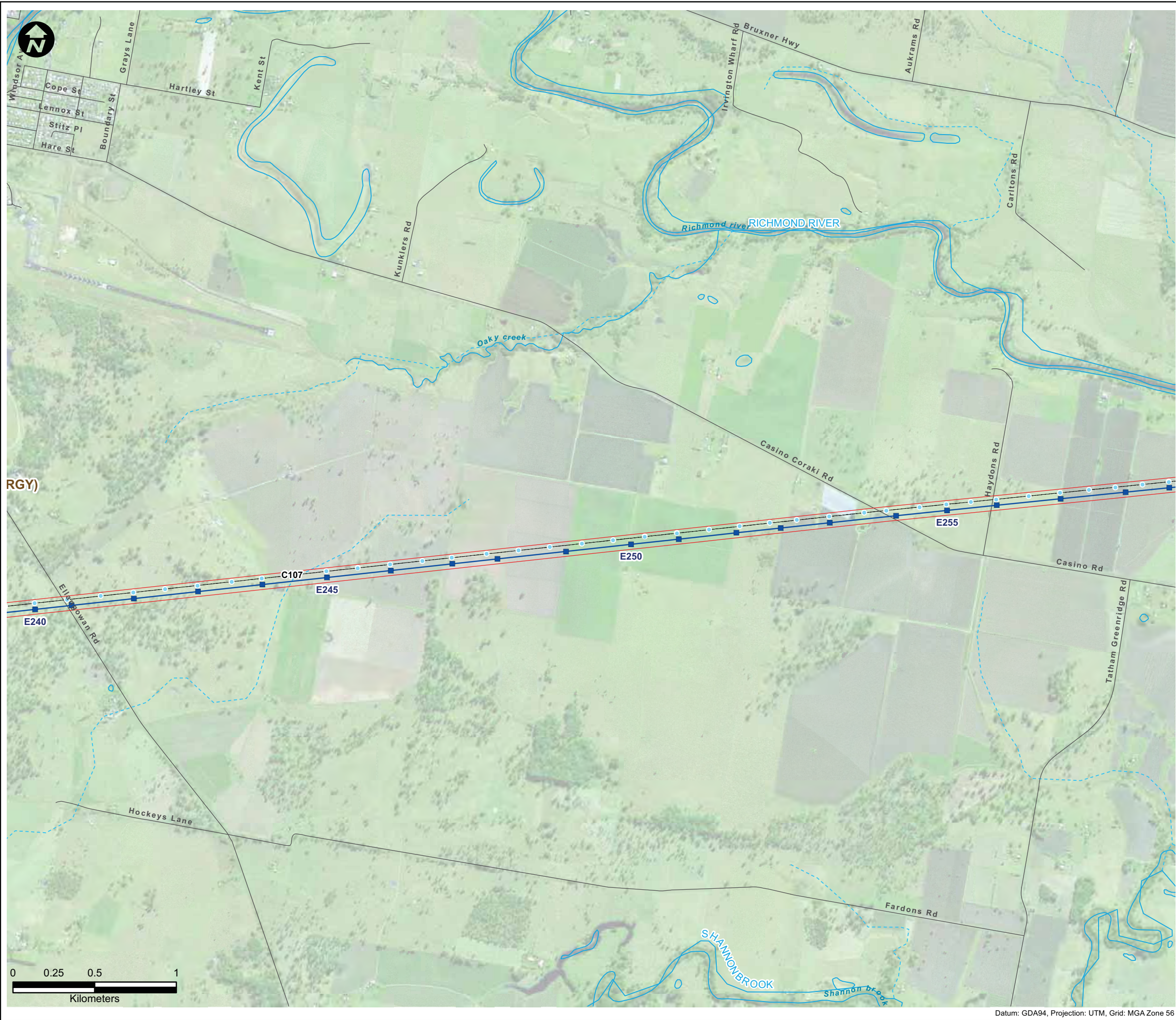
Symbols and lines used in this figure are indicative and are not intended to reflect actual size of represented features.  
Symbols and lines have been enhanced to aid visibility.

Source: Aerial Imagery from TransGrid 2009.  
<sup>^</sup> TransGrid 2010  
<sup>+</sup> Commonwealth of Australia (Geoscience Australia) 2010  
<sup>\*</sup> Refer to Table B-1 for access track classifications  
<sup>#</sup> Fresh Water Fish Research Database - Dr Dean Gilligan, 2011 and John F. Pursey  
<sup>~</sup> Digitised from DPI's online Fishing and Aquaculture Records Viewer (<http://www.dpi.nsw.gov.au/fisheries/species-protection/records/viewer>)

Drawn: SB/STB	Approved: KT	Date: 07/03/2012
Job No.: 43177662	File No.:43177662.140-4.mxd	
Client TransGrid		
Project FAR NORTH NSW (DUMARESQ - LISMORE 330kV TRANSMISSION LINE) PROJECT		
Title SURFACE WATER AND HYDROLOGY MAPPING SERIES (REVISED)		
Figure: 2ac		
		

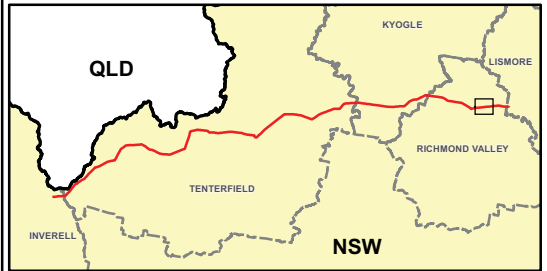


This drawing is subject to COPYRIGHT. It remains the property of URS Australia Pty Ltd.




LEGEND:

- Existing 96L 132kV Structure Locations<sup>^</sup>
  - Existing Transmission Lines<sup>^</sup>
  - Proposed 330kV Angle Positions (Indicative)<sup>^</sup>
  - Proposed 330kV Structure Locations (Indicative)<sup>^</sup>
  - Proposed 330kV Centreline<sup>^</sup>
  - Proposed 330kV Easement<sup>^</sup>
  - Substation/Switching Station
  - Roads
- Waterways<sup>+</sup>:**
- Major / Permanent Flow
  - Major / Intermittent Flow
  - Minor / Intermittent Flow
- Access Tracks<sup>+</sup>:**
- Category 1
  - Category 2
  - Category 3
- C11** Identified or Potential Waterway Crossing Locations
- Creek Crossing (New)
  - Creek Crossing (Upgrade Required)
  - Aquatic Ecological Community of the Lowland Catchment of the Darling River (AECDR)
- NSW DPI FFRD Threatened Species Records<sup>#</sup>:**
- Maccullochella ikei*
  - Mogurnda adspersa*
- Endangered Populations<sup>#</sup>:**
- Ambassis agassizii*
  - Tandanus tandanus*
- Commonwealth EPBC Act Listed Species<sup>~</sup>:**
- Maccullochella peelii peelii*



Symbols and lines used in this figure are indicative and are not intended to reflect actual size of represented features.  
Symbols and lines have been enhanced to aid visibility.

Source: Aerial Imagery from TransGrid 2009.  
<sup>^</sup> TransGrid 2010  
<sup>+</sup> Commonwealth of Australia (Geoscience Australia) 2010  
<sup>\*</sup> Refer to Table B-1 for access track classifications  
<sup>#</sup> Fresh Water Fish Research Database - Dr Dean Gilligan, 2011 and John F. Pursey  
<sup>~</sup> Digitised from DPI's online Fishing and Aquaculture Records Viewer (<http://www.dpi.nsw.gov.au/fisheries/species-protection/records/viewer>)

Drawn: SB/STB	Approved: KT	Date: 07/03/2012
Job No.: 43177662		File No.:43177662.140-4.mxd
Client TransGrid		
Project FAR NORTH NSW (DUMARESQ - LISMORE 330kV TRANSMISSION LINE) PROJECT		
Title SURFACE WATER AND HYDROLOGY MAPPING SERIES (REVISED)		
Figure: 2ad		
		



This drawing is subject to COPYRIGHT. It remains the property of URS Australia Pty Ltd.



**LEGEND:**

- Existing 96L 132kV Structure Locations<sup>^</sup>
- Existing Transmission Lines<sup>^</sup>
- Proposed 330kV Angle Positions (Indicative)<sup>^</sup>
- Proposed 330kV Structure Locations (Indicative)<sup>^</sup>
- Proposed 330kV Centreline<sup>^</sup>
- Proposed 330kV Easement<sup>^</sup>
- Substation/Switching Station
- Roads

**Waterways<sup>+</sup>:**

- Major / Permanent Flow
- Major / Intermittent Flow
- Minor / Intermittent Flow

**Access Tracks<sup>+</sup>:**

- Category 1
- Category 2
- Category 3

**C11 Identified or Potential Waterway Crossing Locations**

- Creek Crossing (New)
- Creek Crossing (Upgrade Required)
- Aquatic Ecological Community of the Lowland Catchment of the Darling River (AECDR)

**NSW DPI FFRD Threatened Species Records<sup>#</sup>:**

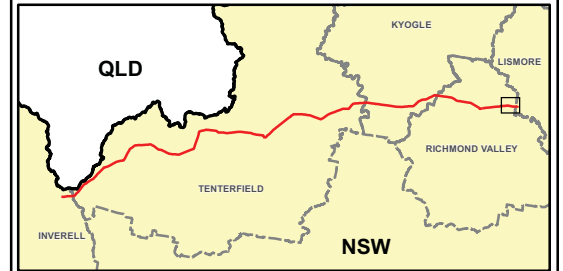
- Maccullochella ikei*
- Mogurnda adspersa*

**Endangered Populations<sup>#</sup>:**

- Ambassis agassizii*
- Tandanus tandanus*


**Commonwealth EPBC Act Listed Species<sup>~</sup>:**

- Maccullochella peelii peelii*



Symbols and lines used in this figure are indicative and are not intended to reflect actual size of represented features.  
Symbols and lines have been enhanced to aid visibility.

Source: Aerial Imagery from TransGrid 2009.  
<sup>^</sup> TransGrid 2010  
<sup>+</sup> Commonwealth of Australia (Geoscience Australia) 2010  
<sup>\*</sup> Refer to Table B-1 for access track classifications  
<sup>#</sup> Fresh Water Fish Research Database - Dr Dean Gilligan, 2011 and John F. Pursey  
<sup>~</sup> Digitised from DPI's online Fishing and Aquaculture Records Viewer (<http://www.dpi.nsw.gov.au/fisheries/species-protection/records/viewer>)

Drawn: SB/STB	Approved: KT	Date: 07/03/2012
Job No.: 43177662	File No.:43177662.140-4.mxd	
Client  TransGrid		
Project  FAR NORTH NSW (DUMARESQ - LISMORE 330kV TRANSMISSION LINE) PROJECT		
Title  SURFACE WATER AND HYDROLOGY MAPPING SERIES (REVISED)		
Figure: 2ae		
		

Datum: GDA94, Projection: UTM, Grid: MGA Zone 56