

Appendix F. Water Cycle Plans

Notes



Key to symbols

- LEGEND**
- CATCHMENT BOUNDARY
 - CATCHMENT NODE AND DISCHARGE LOCATION

Reference drawings

P2	20.07.12	AMP	ISSUED FOR COORDINATION	CJA	-
P1	10.07.12	AMP	ISSUED FOR COORDINATION	CJA	-
Rev	Date	Drawn	Description	CHK'd	App'd



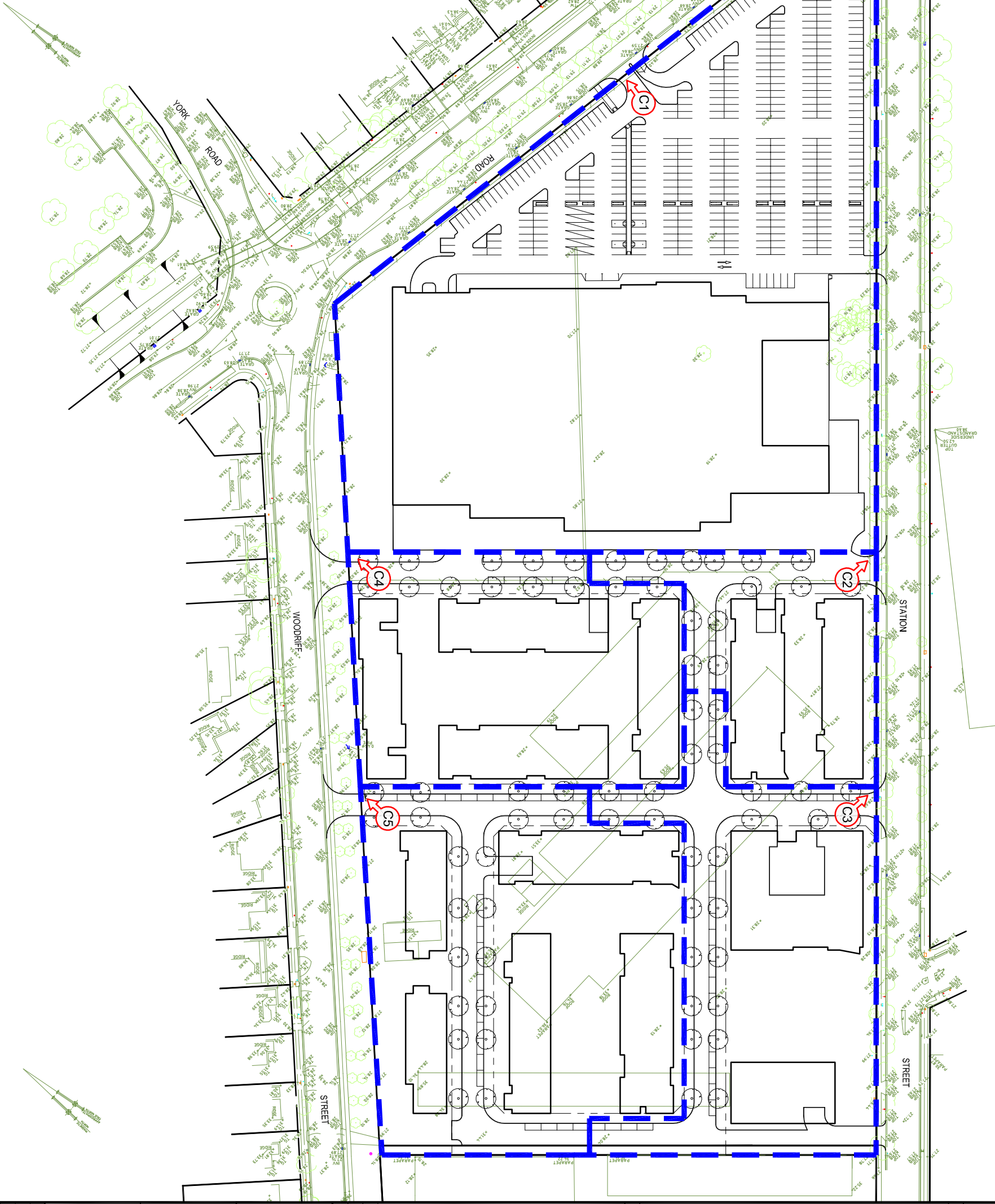
Level 3, 90 Philip Street
Perth, Western Australia 6000
Australia
PO Box 163, Perth
NSW 2124, Australia
T +61 (0)8 9488 8881
F +61 (0)8 9488 8882
W www.mottmac.com.au

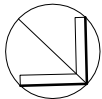
Client

PARKVIEW
CONSTRUCTIONS • DEVELOPMENTS • PROJECTS • INTERIORS
NEPEAN GREEN
PENRITH
CONCEPT CATCHMENT PLAN

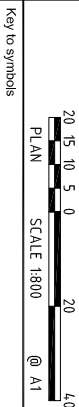
Designed	DR	Eng check	CJA	
Drawn	AMP	Coordination		
Dwg check	DR	Approved	CJA	
Scale at A1		Status	PRE	Rev
Drawing Number				P2

MMD-310574-C-SK-00-XX-0101





NOTE:
THE STORMWATER MANAGEMENT STRATEGY AS SHOWN IS INDICATIVE ONLY WITH EXACT DETAILS TO BE DETERMINED DURING THE DESIGN DEVELOPMENT PHASE OF THE PROJECT



Key to symbols

- LEGEND**
- PROPOSED STORMWATER LINE
 - PROPOSED DRAINAGE EASEMENT
 - PROPOSED STORMWATER PIT
 - INTERNAL SITE OVERLAND FLOWPATH
 - PROPOSED OSD IN BASEMENT CARPARK

Reference drawings

Rev	Date	Drawn	Description	CHK'd	App'd
P2	20.07.12	AMP	ISSUED FOR COORDINATION	CJA	-
P1	10.07.12	AMP	ISSUED FOR COORDINATION	CJA	-



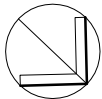
Level 3, 90 Philip Street
Perth, Western Australia 6000
Australia
PO Box 163, Perth
NSW 2124, Australia
T +61 (0)8 9488 1500
F +61 (0)8 9488 1501
W www.mottmac.com.au

Client



NEPEAN GREEN
PENRITH
CONCEPT STORMWATER
MANAGEMENT PLAN

Designed	DR	Eng check	CJA
Drawn	AMP	Coordination	CJA
Dwg check	DR	Approved	CJA
Scale at A1	1:800	Status	PRE
Drawing Number	MMD-310574-C-SK-00-XX-0102	Rev	P2



NOTE:
THE STORMWATER QUALITY TREATMENT DEVICES AS SHOWN ARE PRELIMINARY ONLY WITH THE EXACT TYPE, SIZE AND LOCATION OF THE DIFFERENT TREATMENT COMPONENTS TO BE DETERMINED DURING THE DETAIL DESIGN PHASE OF THE PROJECT



Key to symbols

- POTENTIAL WATER QUALITY TREATMENT DEVICES
- SUB-CATCHMENT BOUNDARY
 - SUB-CATCHMENT LABEL
 - GROSS POLLUTANT TRAP TANK (GPT)
 - RAINFALL STORAGE TANK

Reference drawings

P2	20.07.12	AMP	ISSUED FOR COORDINATION	CJA	-
P1	10.07.12	AMP	ISSUED FOR COORDINATION	CJA	-
Rev	Date	Drawn	Description	CHK'd	App'd



Level 3, 90 Philip Street
Perth, Western Australia 6000
Australia
PO Box 163, Perth
NSW 2124, Australia
T +61 (0)8 9481 5544
F +61 (0)8 9481 5545
W www.mottmac.com.au

PARKVIEW
CONSTRUCTIONS • DEVELOPMENTS • PROJECTS • INTERIORS

NEPEAN GREEN
PENRITH
CONCEPT STORMWATER QUALITY
TREATMENT PLAN

Designed	DR	Eng check	CJA	
Drawn	AMP	Coordination		
Dwg check	DR	Approved	CJA	
Scale at A1		Status	PRE	P2

Drawing Number
MMD-310574-C-SK-00-XX-0103



GROSS POLLUTANT TRAP GPT AT
OUTFLOW OF EACH SUB-CATCHMENT.
GPT'S PROPOSED POSITION TO
MAXIMIZE FLOW AND ALLOW EASY
ACCESS FOR MAINTENANCE (TYP)

100k RAINWATER
RE-USE TANK

40k RAINWATER
RE-USE TANK

35k RAINWATER
RE-USE TANK

75k RAINWATER
RE-USE TANK

20k RAINWATER
RE-USE TANK

RAINWATER STORAGE TANK
TO COLLECT ROOF WATER
FOR RE-USE ON SITE (TYP)