

Previous Development Application

Proposed Development Application

6.1.16 Pedestrian Network

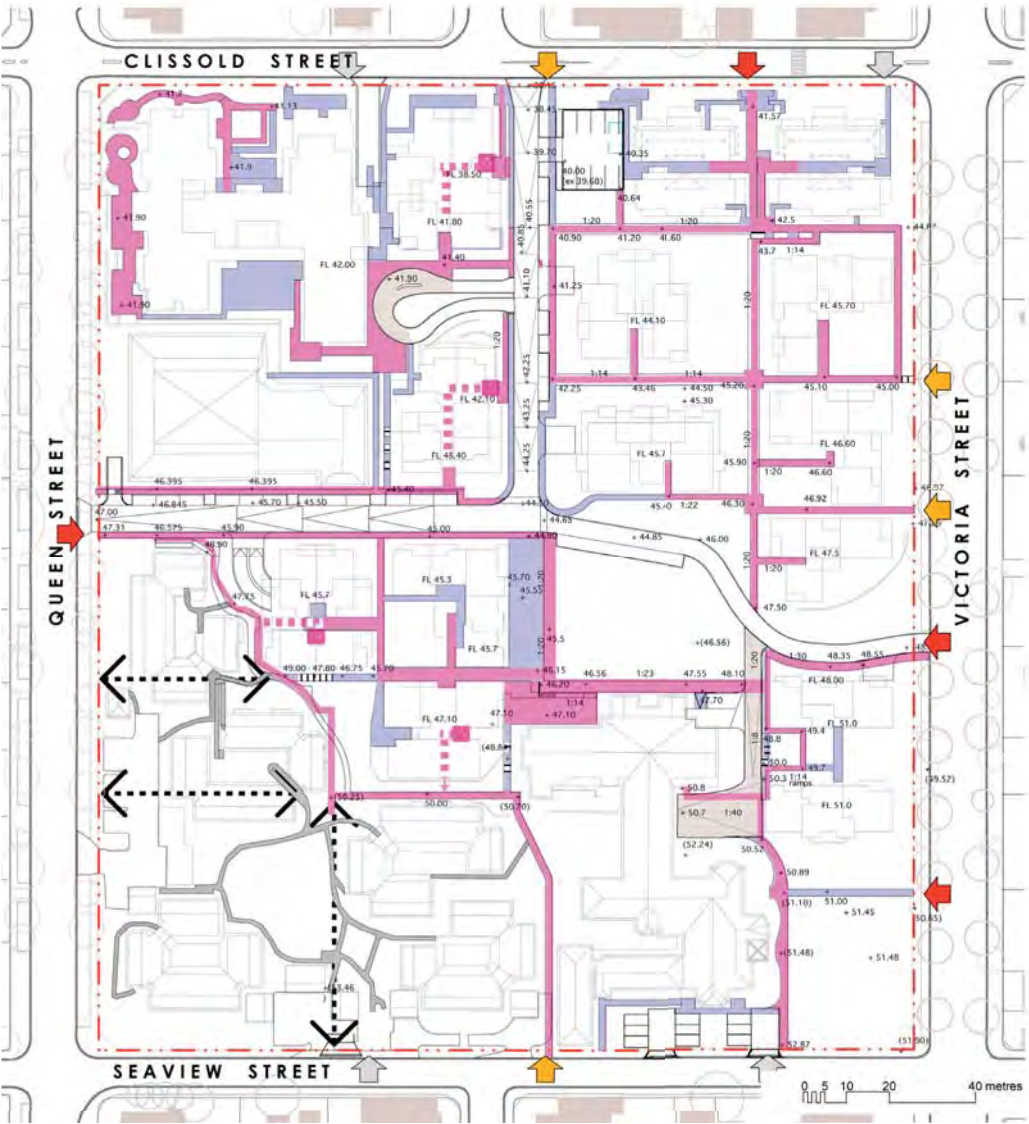


Figure. 17b Pedestrian Network

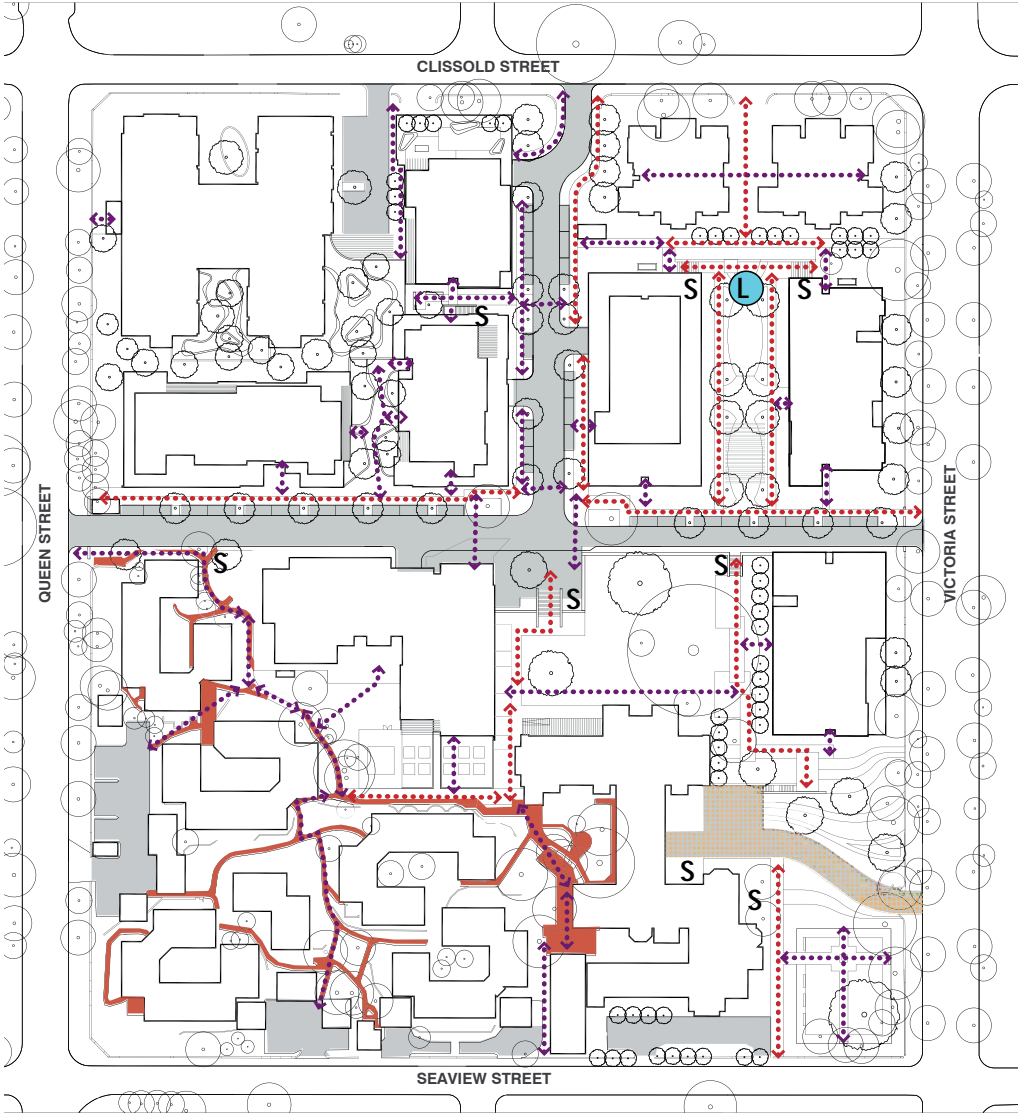
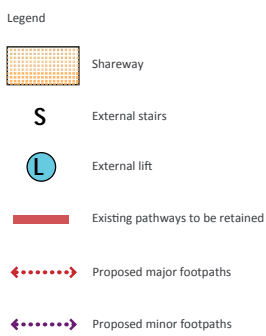
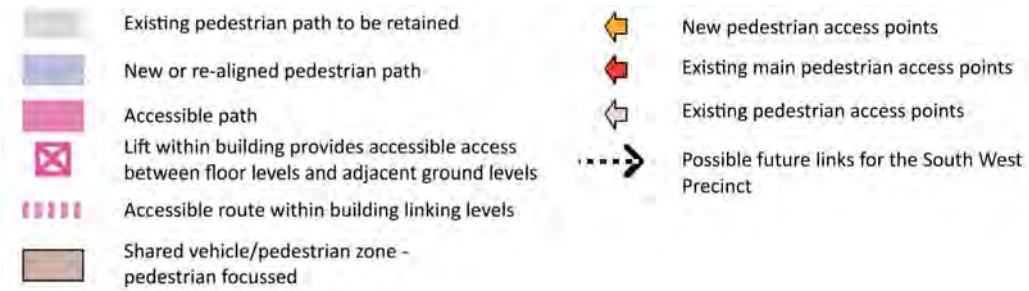


Figure. 3.22b Pedestrian Network





Previous Development Application

Proposed Development Application

6.1.17 Landscape Strategy

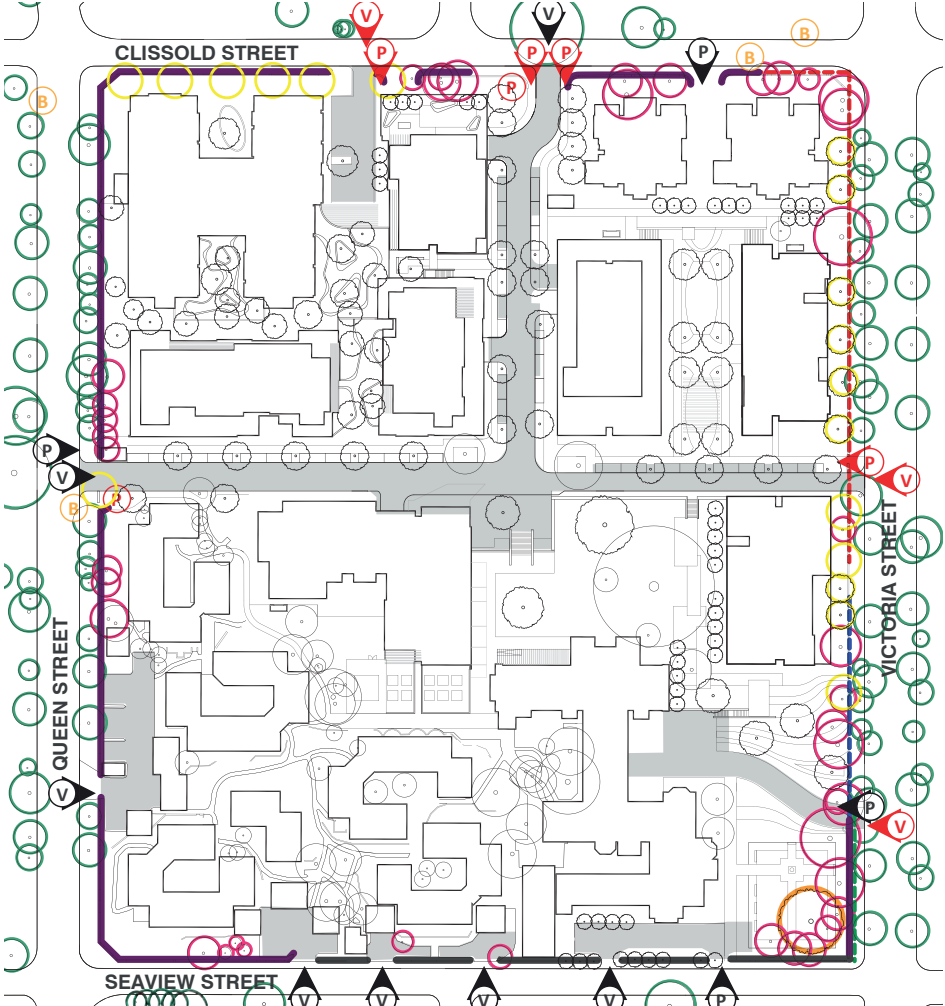
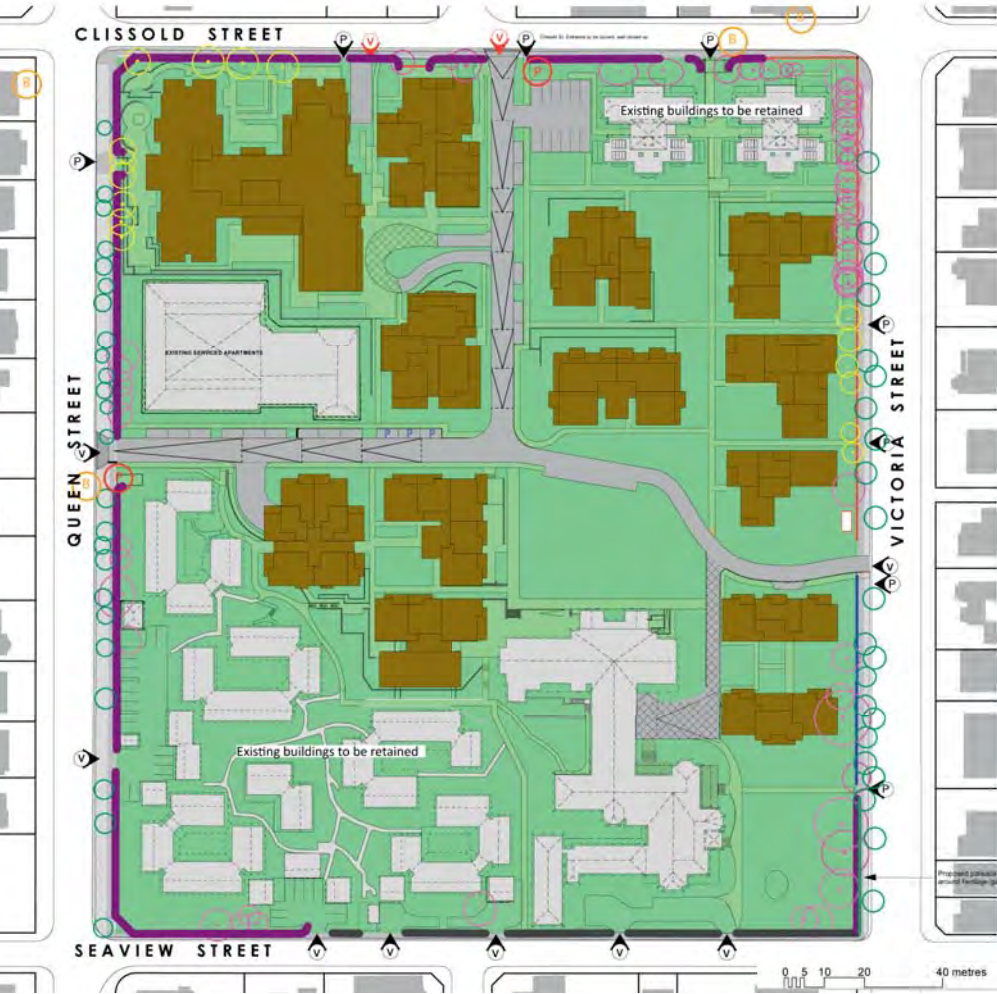
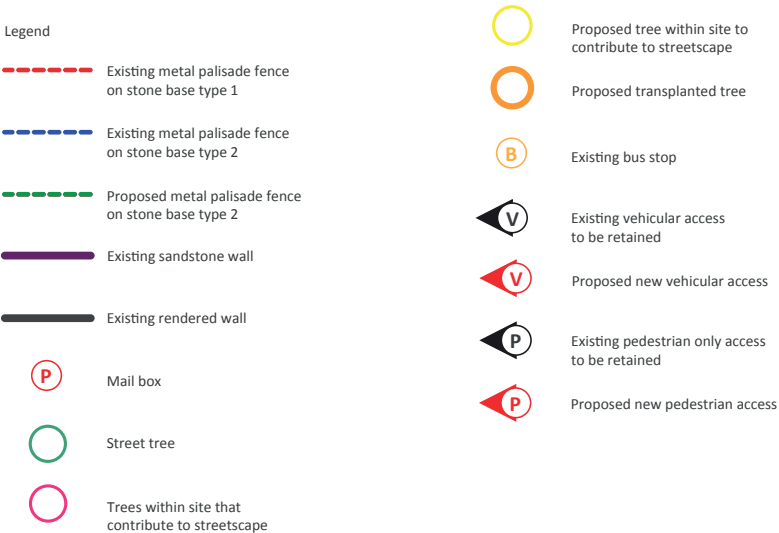
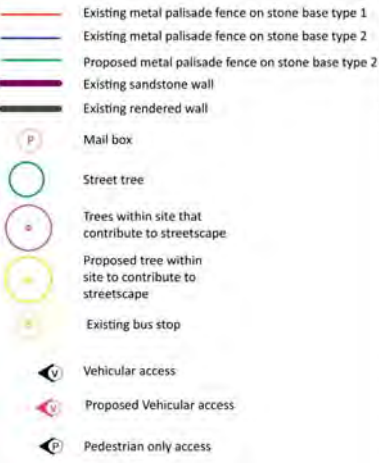


Figure. 18 Landscape Strategy

Figure. 3.23 Landscape Strategy





Previous Development Application



Figure. 19 Tree Strategy

Proposed Development Application

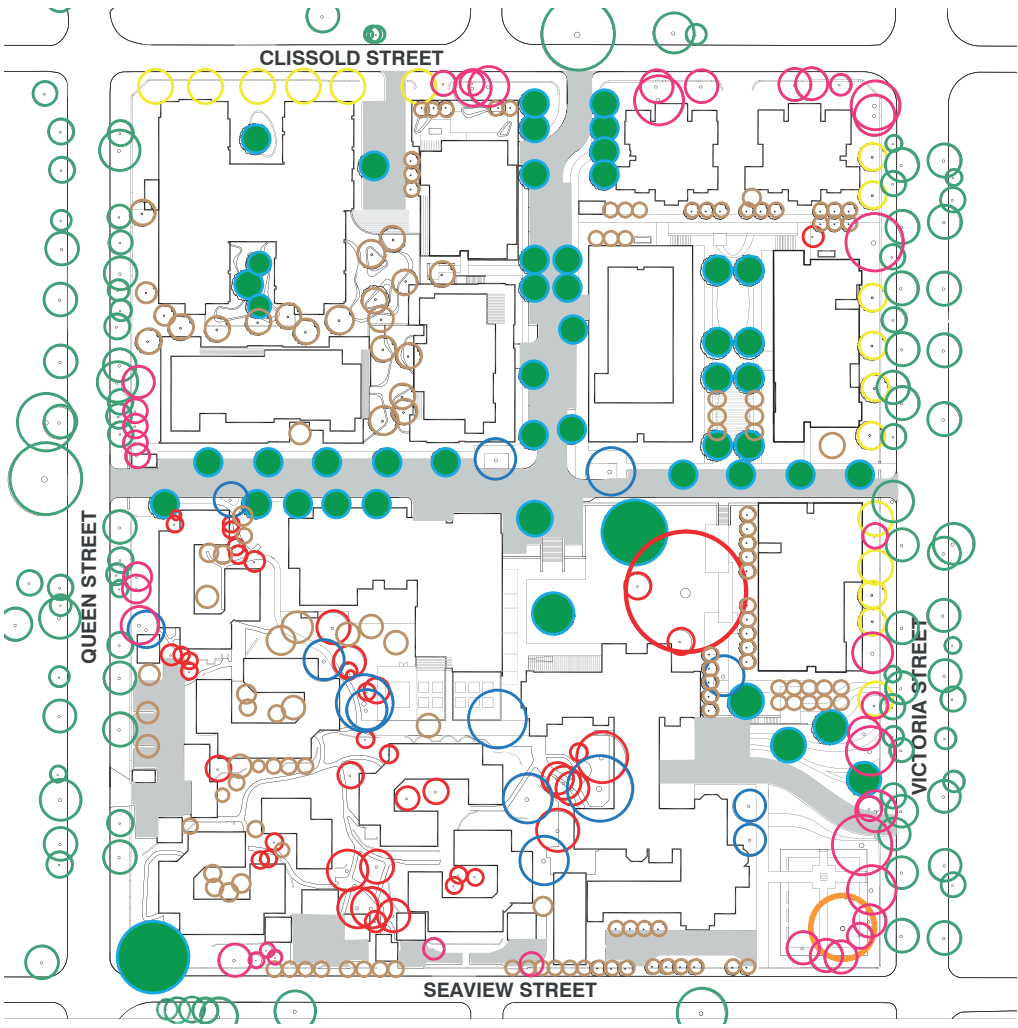
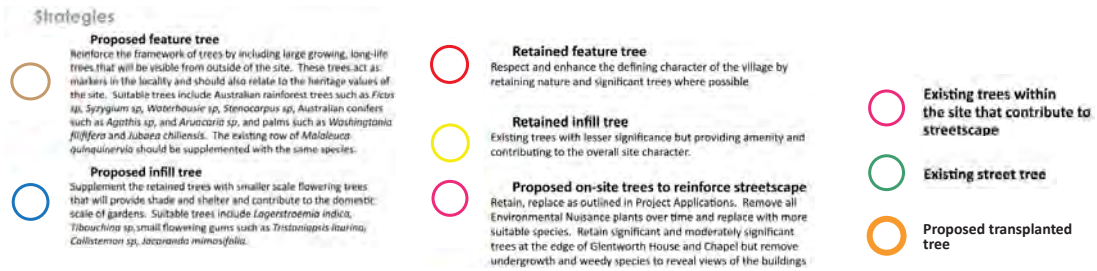
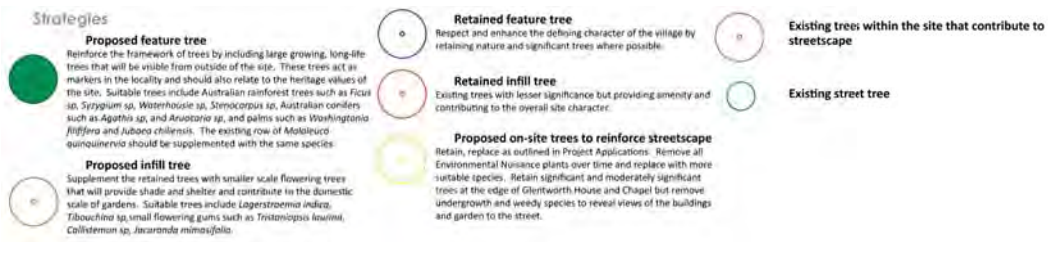


Figure. 3.24 Tree Strategy

6.1.18 Tree Strategy





Previous Development Application

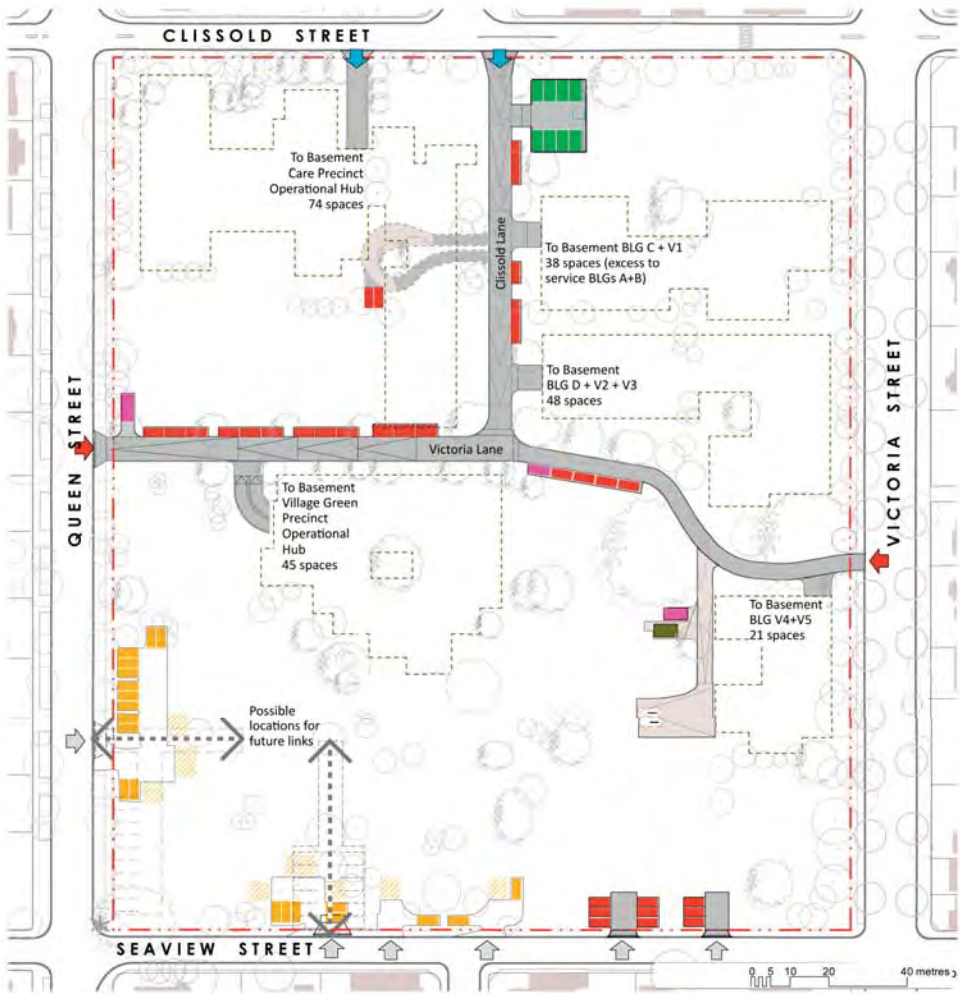


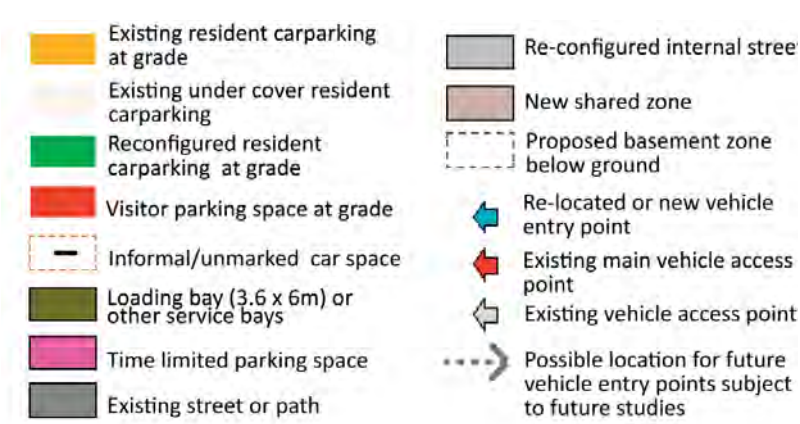
Figure. 20. Access Strategy

Proposed Development Application



Figure. 3.26 Access Strategy

6.1.19 Access Strategy





- Nutrient filtration zone
- Rainwater tank
- On site detention
- Sewer main connection and water meter to existing S-W Precinct
- Surface run-off
- Hydrant Line
- Sewer
- Existing street drainage

Previous Development Application

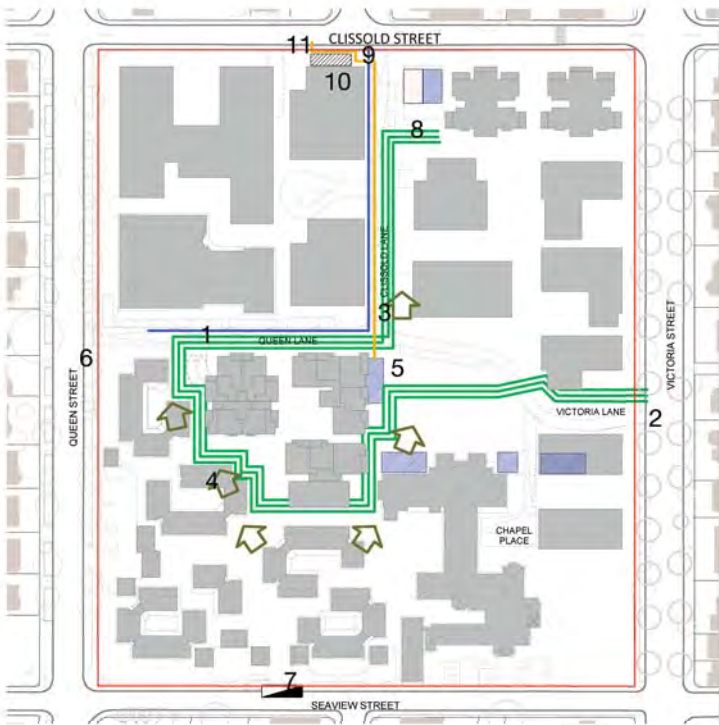


Figure. 21. Water Sensitive Urban Design Strategy

Proposed Development Application



Figure. 3.28 Water Sensitive Urban Design Strategy

6.1.20 Water Sensitive Urban Design Strategy

Previous Development Application

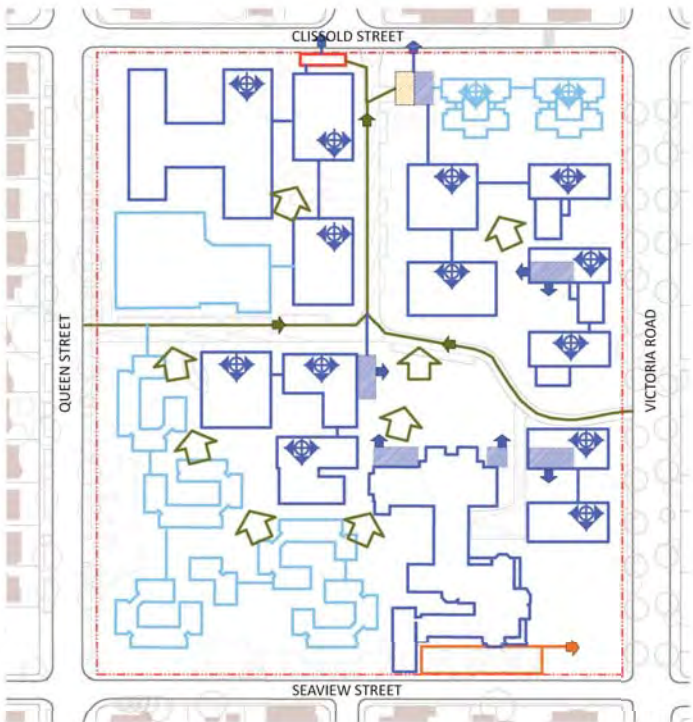


Figure. 22. Hydraulics Strategy

Proposed Development Application

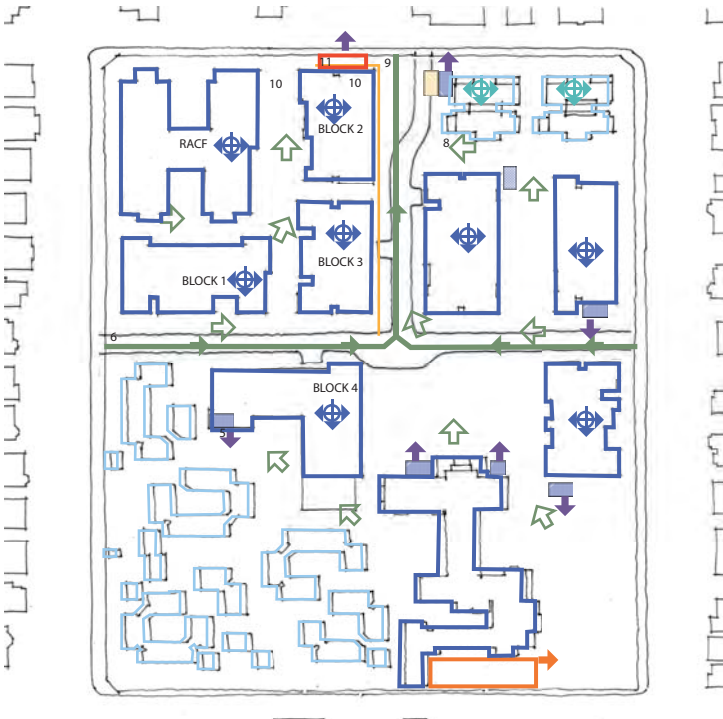


Figure. 3.29 Hydraulics Strategy

6.1.21 Hydraulics Strategy

- Nutrient filtration zone
- Surface water from carpark - connection to existing lines
- Surface water line to filtration
- Surface water run-off
- OSD
- Rainwater tank
- Roof water for re-use on landscape
- Rainwater reticulated for toilet flushing
- Roof gutters
- Existing rainwater reticulated for toilet flushing to be retained
- Existing roof gutters to be retained



Previous Development Application

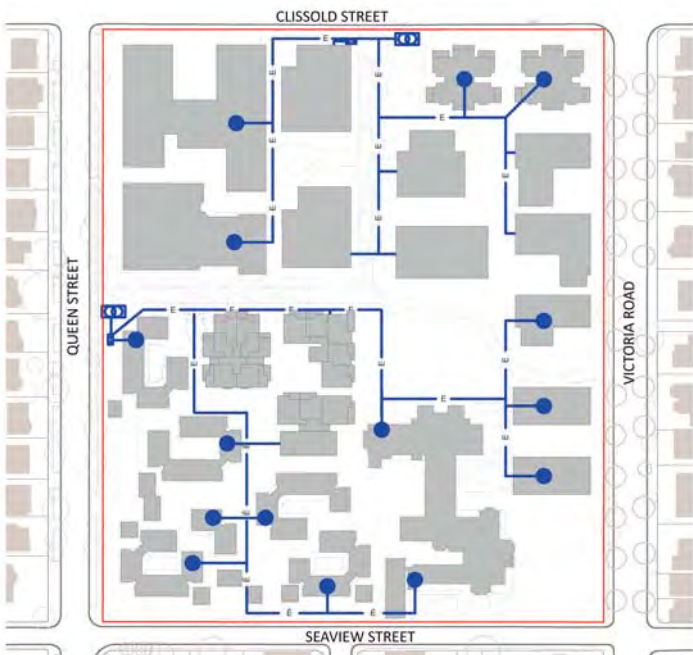


Figure. 23. Electrical Strategy

Proposed Development Application



Figure. 3.30 Electrical Strategy

6.1.22 Electrical Strategy

- Residential waste collection (240L)
- Commercial waste collection (MRV)
- Intermediate bin store

Previous Development Application



Figure. 24. Site Servicing Strategy

Proposed Development Application

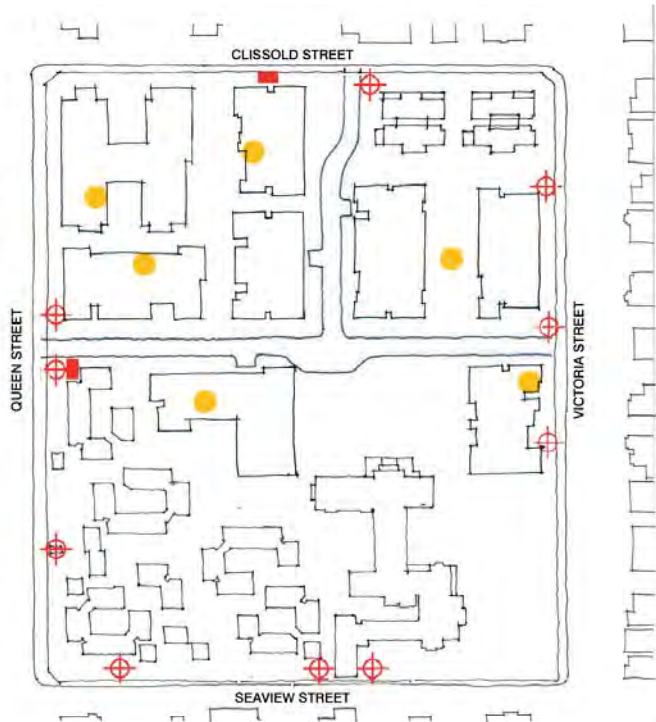


Figure. 3.31 Site Servicing Strategy

6.1.23 Site Servicing Strategy