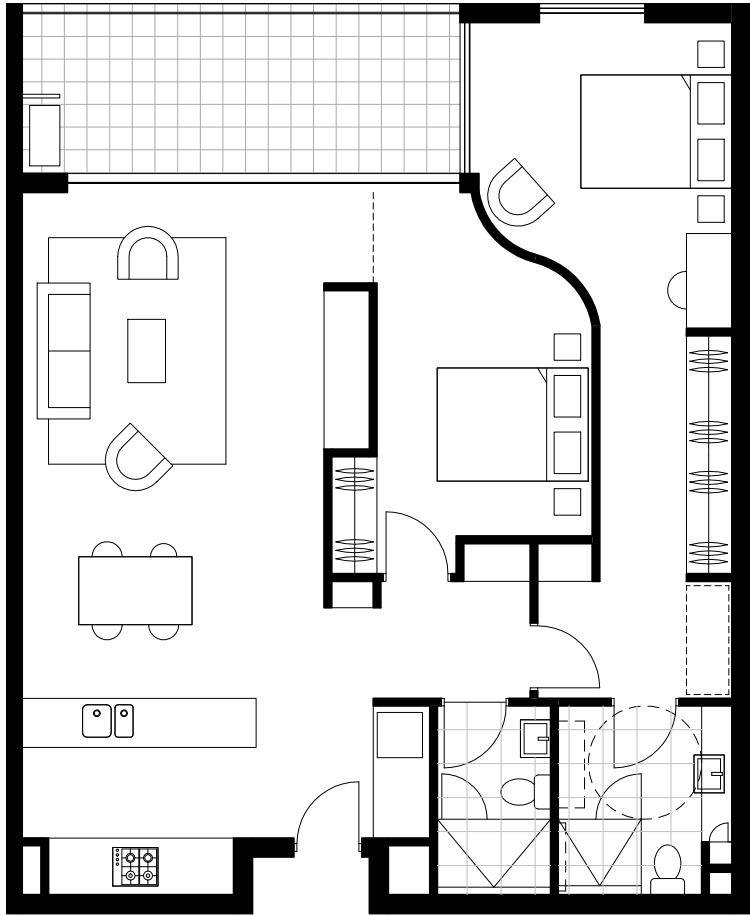
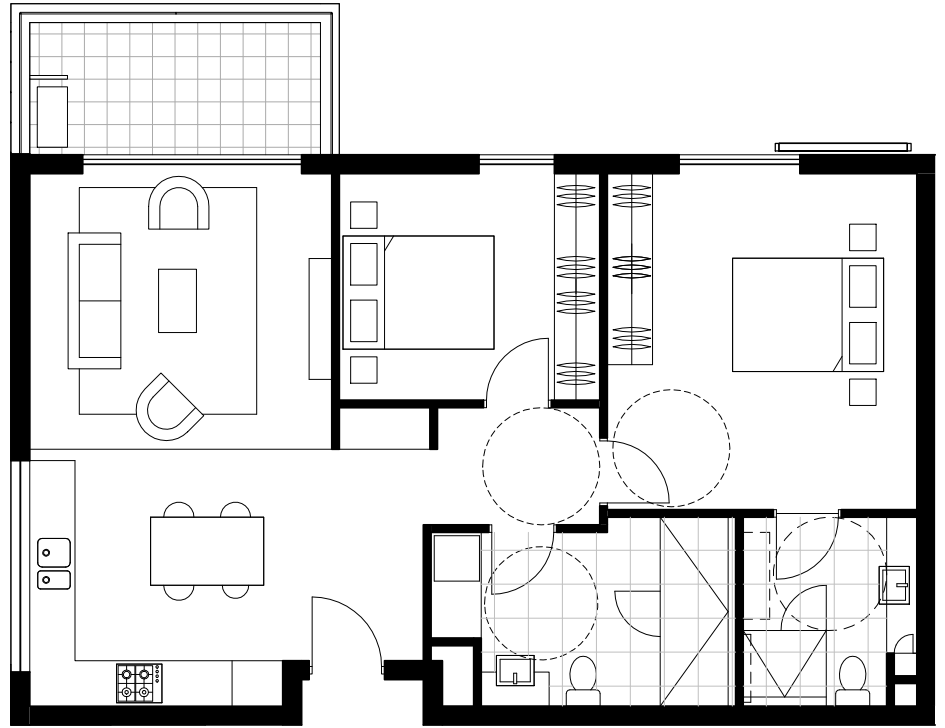


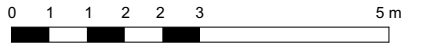
2 ONE BEDROOM PLUS STUDY TYPE 1  
1 : 50



3 TWO BEDROOM TYPE 1  
1 : 50

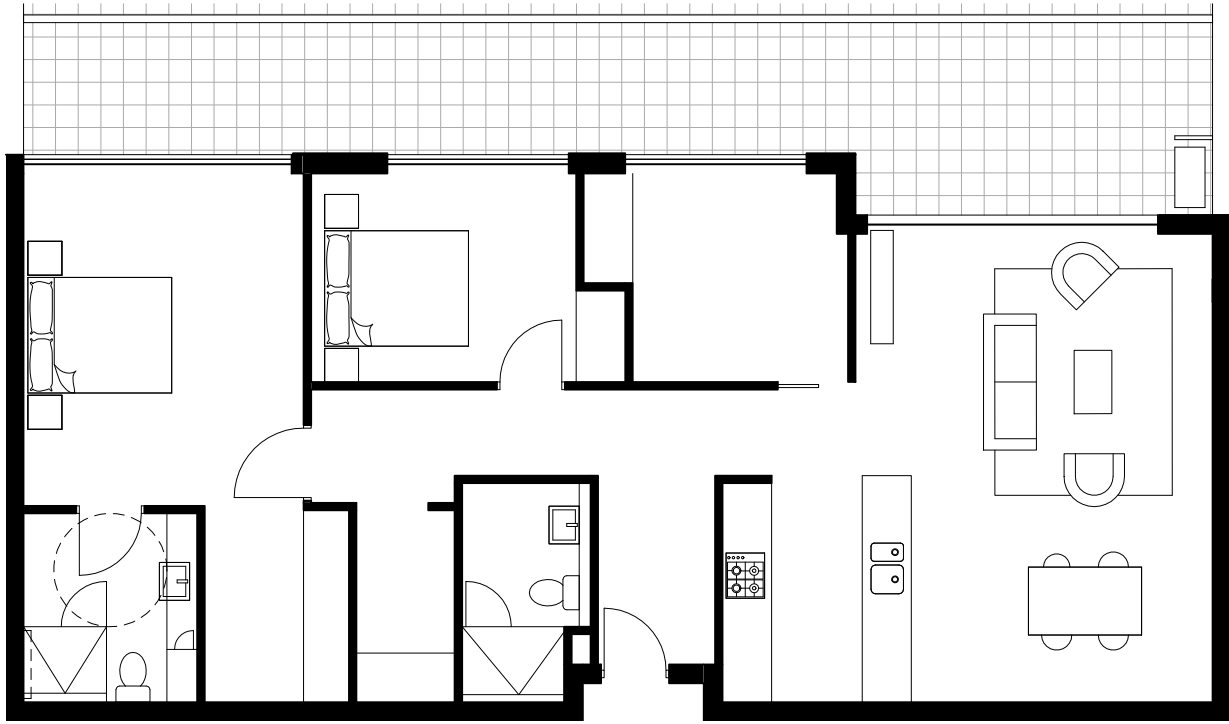


1 TWO BEDROOM TYPE 2  
1 : 50

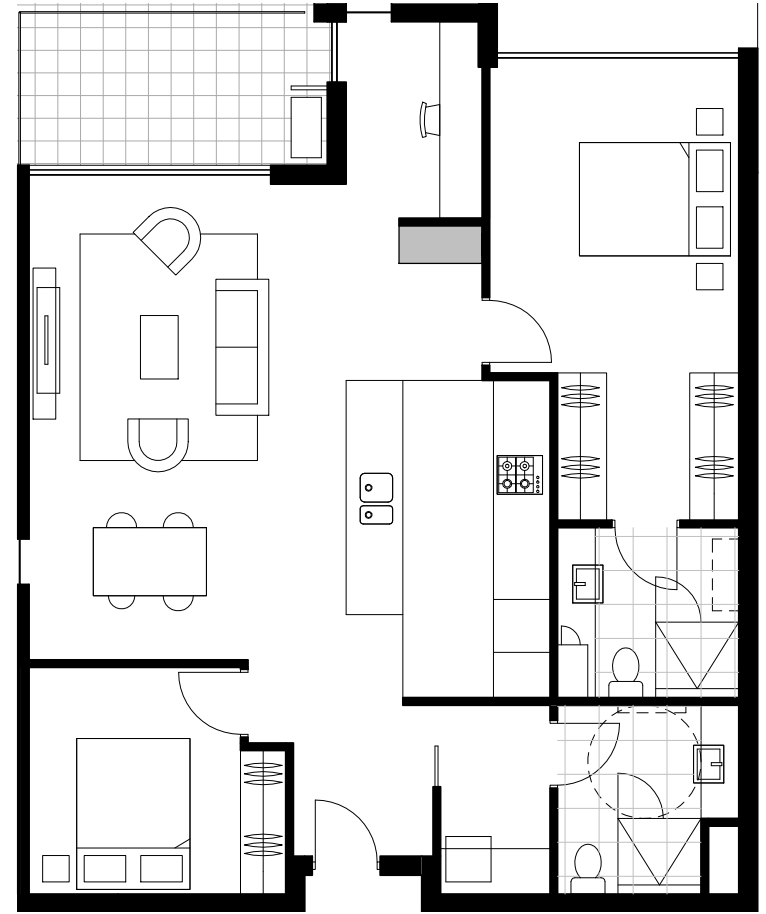


	<div>Revisions</div> <table><tr><th>No.</th><th>Date</th><th>Description</th><th>Ver</th><th>App'd</th></tr><tr><td>A</td><td>181012</td><td>75W ISSUE</td><td></td><td></td></tr></table>	No.	Date	Description	Ver	App'd	A	181012	75W ISSUE			<div>Key</div>	<div>Client</div> <div>Stockland Development Division</div>	<div>Architect</div> <div><div>AJ+C</div><div>ALLEN JACK+COTTER</div><div>79 Myrtle Street Chippendale NSW 2008 AUSTRALIA ph +61 2 9311 8222 fx +61 2 9311 8200 ABN 53 003 782 250</div></div>	<div>Project</div> <div>Cardinal Freeman Village 137 Victoria Street ASHFIELD NSW Proj. No. 12018</div>	<div>Drawing Title</div> <div>TYPICAL APARTMENT PLANS - SHEET 1</div>	<div>Scale</div> <div>1 : 50 @A1</div>	<div>Drawing No.</div> <div>DA5101</div>	<div>Issue</div> <div>A</div>
No.	Date	Description	Ver	App'd															
A	181012	75W ISSUE																	
NOT FOR CONSTRUCTION																			

Do not scale drawings. Use figured dimensions only. Check & verify levels and dimensions on site prior to the commencement of any work, the preparation of shop drawings or the fabrication of components. This drawing is the copyright of Allen Jack + Cotter Architects and is protected under the Copyright Act 1968. Do not alter, reproduce or transmit in any form, or by any means without the express permission of Allen Jack + Cotter Architects. Nominated Architects: Michael Heenan 5264, Peter Ireland 6861



1 TWO BED PLUS STUDY TYPE 1  
1 : 50



2 TWO BED PLUS STUDY TYPE 2  
1 : 50



	<div>Revisions</div> <table><tr><th>No.</th><th>Date</th><th>Description</th><th>Ver</th><th>App'd</th></tr><tr><td>A</td><td>181012</td><td>75W ISSUE</td><td></td><td></td></tr></table>	No.	Date	Description	Ver	App'd	A	181012	75W ISSUE			<div>Key</div>	<div>Client</div> <div>Stockland Development Division</div>	<div>Architect</div> <div><div>AJ+C</div><div>ALLEN JACK COTTER</div><div>79 Myrtle Street Chippendale NSW 2008 AUSTRALIA ph +61 2 9311 8222 fx +61 2 9311 8200 ABN 53 003 782 250</div></div>	<div>Project</div> <div>Cardinal Freeman Village 137 Victoria Street ASHFIELD NSW Proj. No. <b>12018</b></div>	<div>Drawing Title</div> <div>TYPICAL APARTMENT PLANS - SHEET 2</div>	<div>Scale</div> <div>1 : 50 @A1</div>	<div>Drawing No.</div> <div>DA5102</div>	<div>Issue</div> <div>A</div>
No.	Date	Description	Ver	App'd															
A	181012	75W ISSUE																	
NOT FOR CONSTRUCTION																			