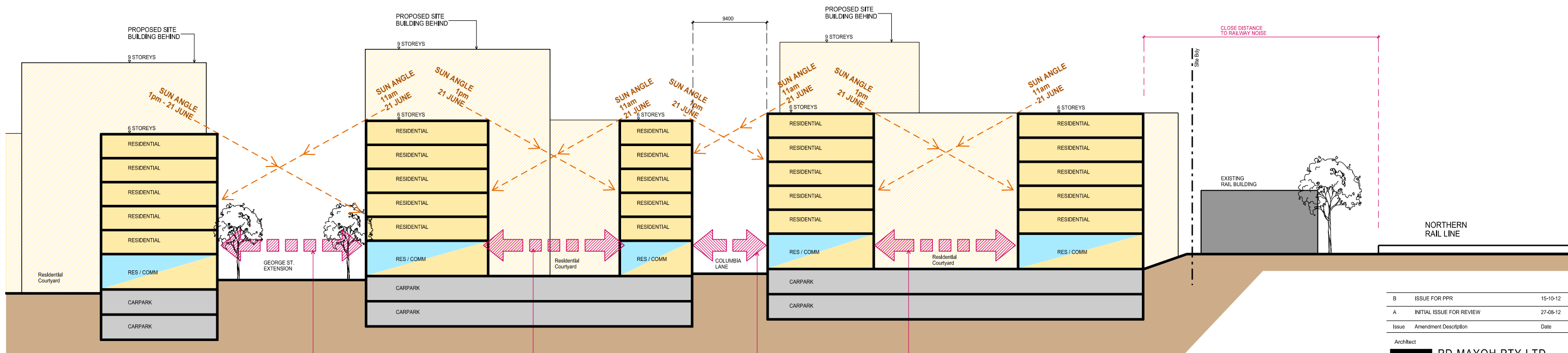
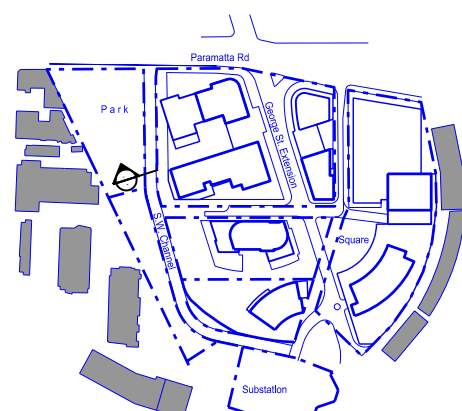


SITE SECTION
PREFERRED SCHEME

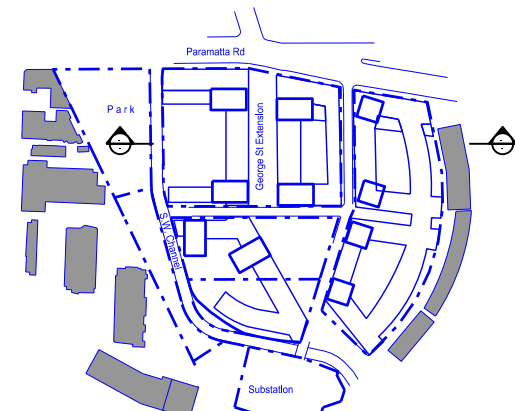


SITE SECTION
STRATHFIELD COUNCIL "FIG 3" SCHEME

RATIO OF HEIGHT TO WIDTH
EXCESSIVE IN STREETSCAPE
AND COURTYARDS
(POOR SOLAR ACCESS
& POOR OUTLOOK)



KEY PLAN
PREFERRED SCHEME



KEY PLAN
STRATHFIELD COUNCIL "FIG 3" SCHEME

B	ISSUE FOR PPR	15-10-12
A	INITIAL ISSUE FOR REVIEW	27-08-12
Issue	Amendment Description	Date

Architect
PD MAYOY PTY LTD
ABN 16788096806
Peter Mayo, Regd. Architect No 3788
Arthur Gartrell, Regd. Architect No 4040
MAYOY 60 Strathallen Avenue Northbridge NSW 2063
P : (02) 9958 0488 F : (02) 9958 6424
ARCHITECTS info@pdmayoy.com.au www.mayoyarchitects.com.au

Clients
David Lhuete Pty. Ltd.
Kennards Self-Storage Pty. Ltd.
Hai Phong Properties Pty. Ltd.

Drawing Title
**Comparison to Strathfield Council
"Figure 3" Scheme
- SITE SECTION -**

Project
CONCEPT PLAN APPLICATION FOR :
**columbia precinct
regeneration**
HOME BUSH
2-20 Parramatta Road & 11-13 Columbia Lane, Homebush NSW

Scale: 1:500 @ A1 Job No: 0834
1:1000 @ A3
0m 5 10 15 20 25 30

Checked: PH Drawn: TT

Dwg No. A.460 Issue B