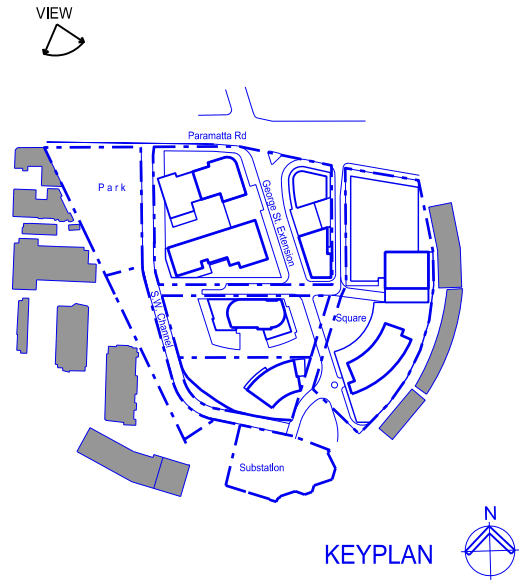
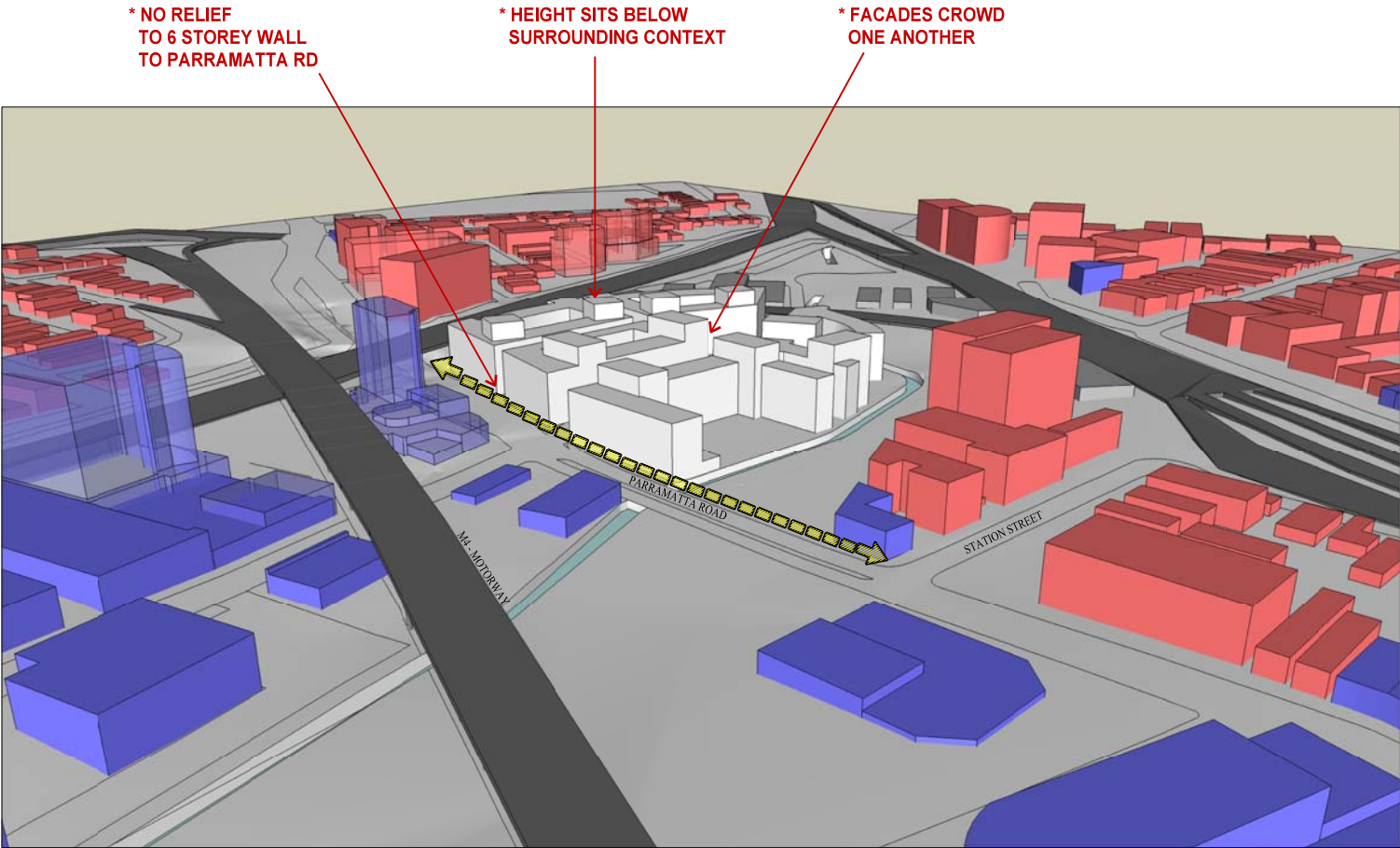


AERIAL VIEW LOOKING SOUTH EAST
PREFERRED SCHEME

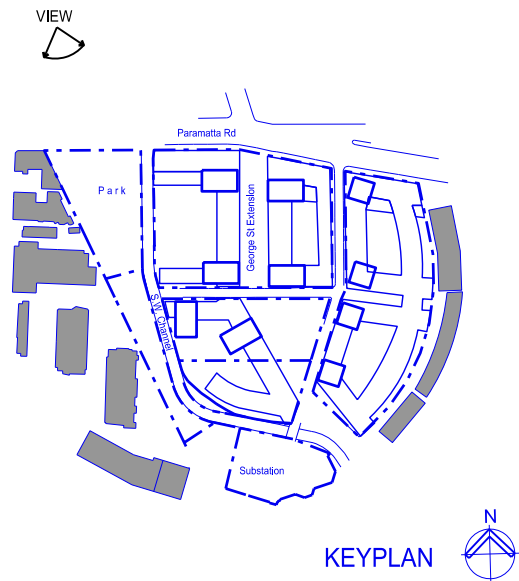


LEGEND :

| | |
|--|---|
| | PROPOSED / REFURBISHED ON SUBJECT SITE |
| | EXISTING RESIDENTIAL |
| | APPROVED RESIDENTIAL BY OTHERS (UNBUILT / UNDER CONSTRUCTION) |
| | EXISTING INFRASTRUCTURAL / INDUSTRIAL |
| | EXISTING COMMERCIAL |
| | PROPOSED COMMERCIAL BY OTHERS |



AERIAL VIEW LOOKING SOUTH EAST
STRATHFIELD COUNCIL "FIG 3" SCHEME



| | | |
|-------|--------------------------|----------|
| B | ISSUE FOR PPR | 15-10-12 |
| A | INITIAL ISSUE FOR REVIEW | 27-08-12 |
| Issue | Amendment Description | Date |

| | |
|---------------|---|
| Architect | PD MAYOY PTY LTD ABN 16788096806 Peter Mayo, Regd. Architect No 3788 Arthur Gastrell, Regd. Architect No 4040 60 Strathallen Avenue Northbridge NSW 2063 P : (02) 9958 9488 F : (02) 9958 6424 info@pdmayoh.com.au www.mayoharchitects.com.au |
| Clients | David Lhuede Pty. Ltd. Kennards Self-Storage Pty. Ltd. Hai Phong Properties Pty. Ltd. |
| Drawing Title | Comparison to Strathfield Council "Figure 3" Scheme - AERIAL VIEWS - |

| | |
|---------|---|
| Project | CONCEPT PLAN APPLICATION FOR : columbia precinct regeneration HOME BUSH 2-20 Parramatta Road & 11-13 Columbia Lane, Homebush NSW |
| Scale: | N/A |
| Job No: | 0834 |

| | | | |
|----------|-------|--------|----|
| Checked: | PH | Drawn: | TT |
| Dwg No. | A.550 | Issue | B |