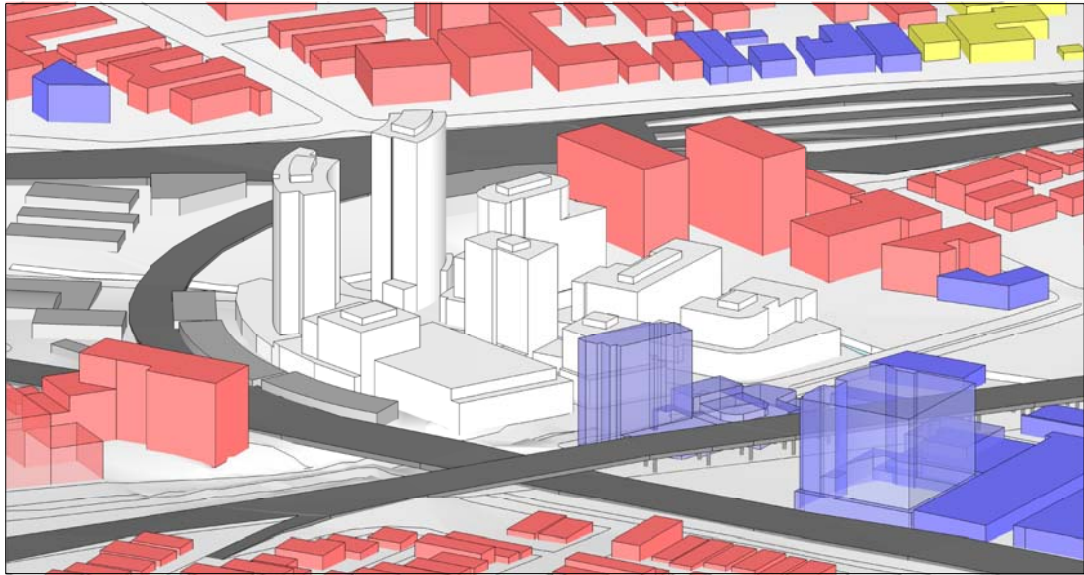
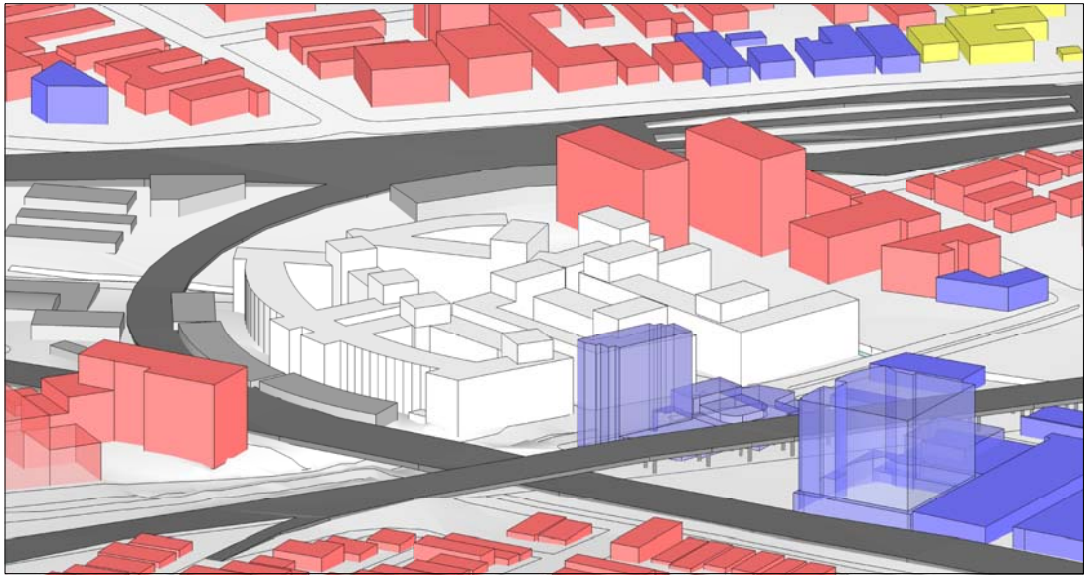


9.00 AM
21 JUNE



PREFERRED SCHEME



STRATHFIELD COUNCIL "FIGURE 3" SCHEME

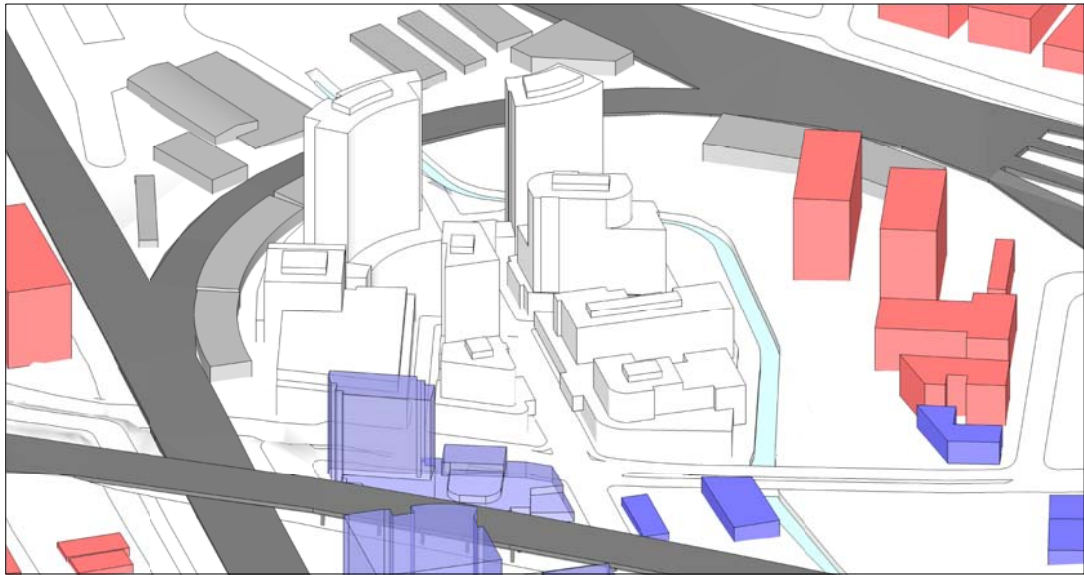
LEGEND :

	PROPOSED / REFURBISHED ON SUBJECT SITE
	EXISTING RESIDENTIAL
	APPROVED RESIDENTIAL BY OTHERS (UNBUILT / UNDER CONSTRUCTION)
	EXISTING INFRASTRUCTURAL / INDUSTRIAL
	EXISTING COMMERCIAL
	PROPOSED COMMERCIAL BY OTHERS

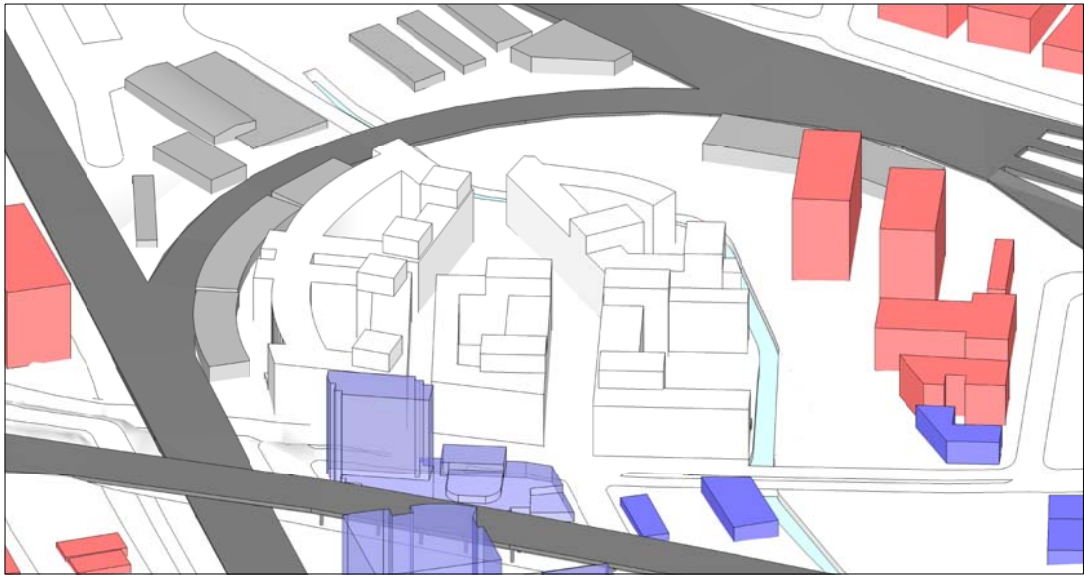
SUMMARY :

PREFERRED SCHEME HAS FAR MORE BUILDING FACADE EXPOSED TO DIRECT SUNLIGHT IN WINTER, ALLOWING FAR GREATER SOLAR ACCESS.

12.00 PM
21 JUNE

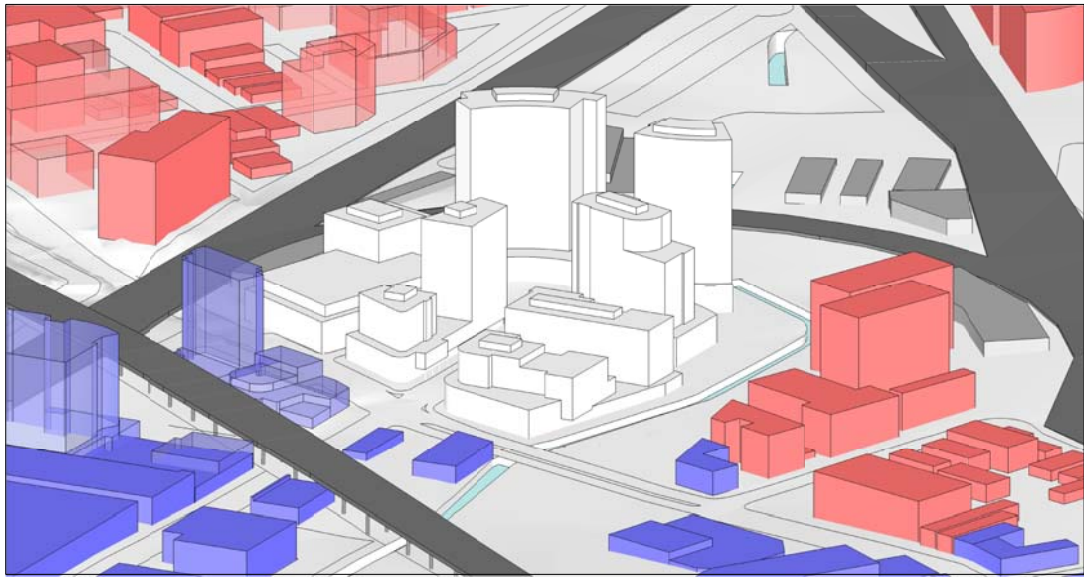


PREFERRED SCHEME

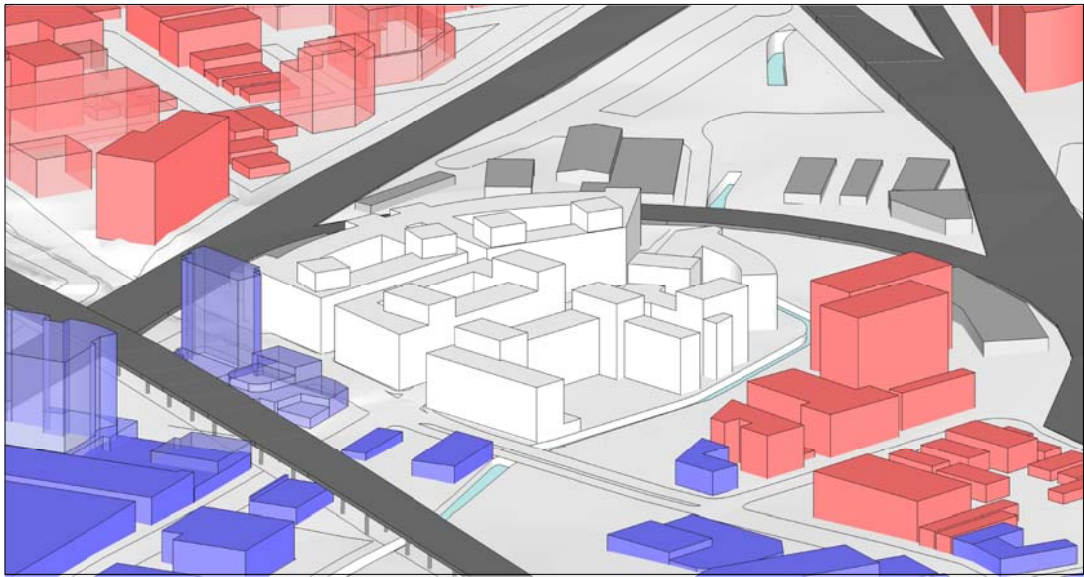


STRATHFIELD COUNCIL "FIGURE 3" SCHEME

3.00 PM
21 JUNE



PREFERRED SCHEME



STRATHFIELD COUNCIL "FIGURE 3" SCHEME

B	ISSUE FOR PPR	15-10-12
A	INITIAL ISSUE FOR REVIEW	27-08-12
Issue	Amendment Description	Date

Architect	PD MAYOY PTY LTD ABN 1678056806 Peter Mayo, Regd. Architect No 3788 Arthur Gastrell, Regd. Architect No 4040 MAYOY ARCHITECTS 60 Strathallen Avenue P : (02) 9958 9488 info@pdmayoy.com.au
Clients	David Lhuete Pty. Ltd. Kennards Self-Storage Pty. Ltd. Hai Phong Properties Pty. Ltd.

Drawing Title

Solar Eye-View Comparison to Strathfield Council "Figure 3" - MIDWINTER -

Project	CONCEPT PLAN APPLICATION FOR :
	columbia precinct regeneration HOMEBUSH
	2-20 Parramatta Road & 11-13 Columbia Lane, Homebush NSW
Scale:	N/A
Job No:	0834

Checked:	PH	Drawn:	TT
Dwg No.	A.570	Issue	B