

PLANT SCHEDULE

Zone 1		
SPECIES	PLANT TYPE	PLANTING DENSITY Plants/m ²
<i>Cyperus gracilis</i>	Ground cover	8
<i>Commelina cyanea</i>	Ground cover (near stream only)	8
<i>Lomandra longifolia</i>	Ground cover	8
<i>Microlaena stipoides</i>	Ground cover	8
<i>Cyperus gracilis</i>	Sedge	4
<i>Melaleuca ericifolia</i>	Small shrub	1
<i>Casuarina glauca</i>	Tree	0.25

Zone 2		
SPECIES	PLANT TYPE	PLANTING DENSITY Plants/m ²
<i>Melaleuca ericifolia</i>	Small shrub	1
<i>Casuarina glauca</i>	Tree	0.25

Zone 3A		
SPECIES	PLANT TYPE	PLANTING DENSITY Plants/m ²
<i>Themeda australis</i>	Ground cover	8
<i>Wahlenbergia gracilis</i>	Ground cover	8
<i>Commelina cyanea</i>	Ground cover (near stream only)	8
<i>Cheilanthes sieberi</i> subsp. <i>sieberi</i>	Ground cover	8
<i>Austrostipa ramosissima</i>	Ground cover	8
<i>Imperata cylindrica</i> var. <i>major</i>	Ground cover	8
<i>Lomandra longifolia</i>	Ground cover	8
<i>Hardenbergia violacea</i>	Ground cover	8
<i>Bursaria spinosa</i>	Small shrub	69
<i>Melaleuca ericifolia</i>	Small shrub	69
<i>Daviesia ulicifolia</i>	Erect spiky shrub	69
<i>Dillwynia sieberi</i>	Rigid prickly shrub	69
<i>Indigofera australis</i>	Shrub	69
<i>Pultenaea microphylla</i>	Erect multi-stemmed shrub	69
<i>Acacia parramattensis</i> subsp. <i>parramattensis</i>	Tall shrub	69
<i>Casuarina glauca</i>	Tree	0.0625

Zone 3a		
SPECIES	PLANT TYPE	PLANTING DENSITY Plants/m ²
<i>Themeda australis</i>	Ground cover	8
<i>Wahlenbergia gracilis</i>	Ground cover	8
<i>Commelina cyanea</i>	Ground cover	8
<i>Cheilanthes sieberi</i> subsp. <i>sieberi</i>	Ground cover	8
<i>Austrostipa ramosissima</i>	Ground cover	8
<i>Imperata cylindrica</i> var. <i>major</i>	Ground cover	8
<i>Lomandra longifolia</i>	Ground cover	8
<i>Hardenbergia violacea</i>	Ground cover	8
<i>Bursaria spinosa</i>	Small shrub	69
<i>Melaleuca ericifolia</i>	Small shrub	69
<i>Daviesia ulicifolia</i>	Erect spiky shrub	69
<i>Dillwynia sieberi</i>	Rigid prickly shrub	69
<i>Indigofera australis</i>	Shrub	69
<i>Pultenaea microphylla</i>	Erect multi-stemmed shrub	69
<i>Acacia parramattensis</i> subsp. <i>parramattensis</i>	Tall shrub	69
<i>Eucalyptus tereticornis</i>	Tree	0.0625
<i>Eucalyptus moluccana</i>	Tree	0.0625
<i>Eucalyptus baueriana</i>	Tree	0.0625
<i>Corymbia maculata</i>	Tree	0.0625
<i>Angophora floribunda</i>	Tree	0.0625

Zone 3b		
SPECIES	PLANT TYPE	PLANTING DENSITY Plants/m ²
<i>Zoysia macrantha</i>	Grass	2000
<i>Paspalum distichum</i>	Grass	1046
<i>Casuarina glauca</i>	Tree	0.5

Zone 4a		
SPECIES	PLANT TYPE	PLANTING DENSITY Plants/m ²
<i>Cyperus gracilis</i>	Sedge	4
<i>Casuarina glauca</i>	Tree	0.25

Zone 4b		
SPECIES	PLANT TYPE	PLANTING DENSITY Plants/m ²
<i>Hardenbergia violacea</i>	Ground cover	8
<i>Lomandra longifolia</i>	Ground cover	8
<i>Imperata cylindrica</i> var. <i>major</i>	Ground cover	8
<i>Bursaria spinosa</i>	Small shrub	69
<i>Melaleuca ericifolia</i>	Small shrub	69
<i>Daviesia ulicifolia</i>	Erect spiky shrub	69
<i>Dillwynia sieberi</i>	Rigid prickly shrub	69
<i>Indigofera australis</i>	Shrub	69
<i>Pultenaea microphylla</i>	Erect multi-stemmed shrub	69
<i>Acacia parramattensis</i> subsp. <i>parramattensis</i>	Tall shrub	69

© 2012 Site Image (NSW) Pty Ltd. ABN 44 801 262 380 as agent for Site Image NSW Partnership. All rights reserved. This drawing is copyright and shall not be reproduced or copied in any form or by any means (graphic, electronic or mechanical including photocopy) without the written permission of Site Image (NSW) Pty Ltd. Any license, expressed or implied, to use this document for any purpose what so ever is restricted to the terms of the written agreement between Site Image (NSW) Pty Ltd and the instructing party.

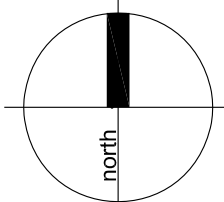
The contractor shall check and verify all work on site (including work by others) before commencing the landscape installation. Any discrepancies are to be reported to the Project Manager or Landscape Architect prior to commencing work. Do not scale this drawing. Any required dimensions not shown shall be referred to the Landscape Architect for confirmation.

Issue	Revision Description	Drawn	Check	Date
D	Amendments to Revised Civil Layout	PH	TC	05.10.2012
C	Issue for S75W	PH	TC	22.06.2012
B	Preliminary	PH	TC	12.04.2012
A	Preliminary	PH	TC	28.03.2012

LEGEND

	Existing Trees to be Retained		Zone 1		Zone 3b		Saline area
	Proposed trees - <i>Casuarina glauca</i>		Zone 2		Zone 4a		Zone 3a1
	Proposed trees - Tree species greater than 8m tall		Zone 3a2		Zone 4b		Proposed Turf - By Seed

Key Plan:



SITE IMAGE
Landscape Architects
Level 1, 3-5 Baptist Street
Sunny Hills NSW 2010 Australia
Tel: (61 2) 8332 5600
Fax: (61 2) 8332 5604
www.siteimage.com.au
Site Image (NSW) Pty Ltd
ABN 44 801 262 380

Client:
GOODMAN

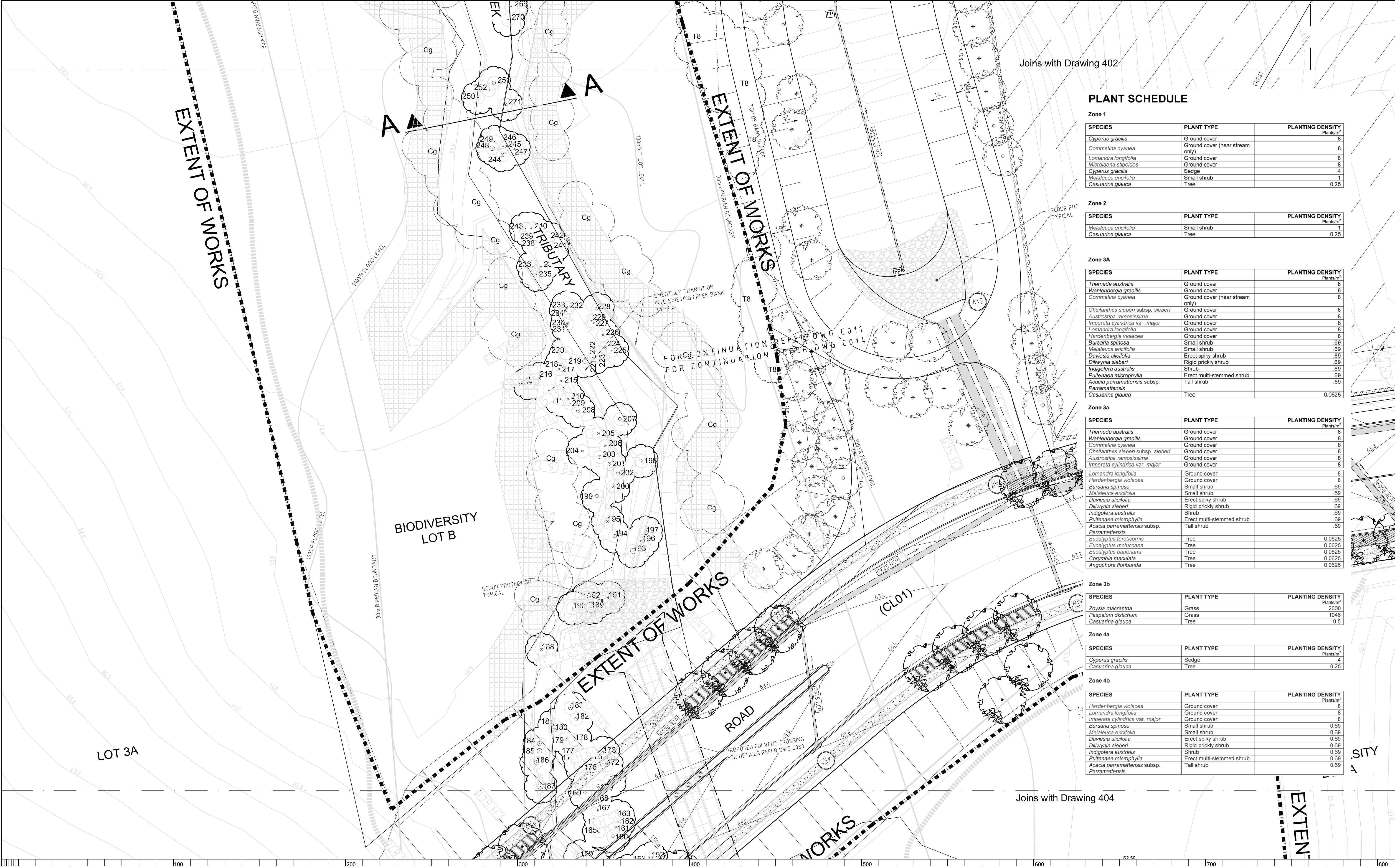
Project:
**OAKDALE STAGE 2
OPEN SPACE**

Drawing Name:
Landscape Planting Plan

S75W MOD.5

Scale: 1:250 @ A1	0 1 2 4 6 10m	Issue:
Job Number: SS11-2419	Drawing Number: 401	D

Sheet 1 of 5



PLANT SCHEDULE

Zone 1		
SPECIES	PLANT TYPE	PLANTING DENSITY Plants/m ²
<i>Cyperus gracilis</i>	Ground cover	8
<i>Commelina cyanea</i>	Ground cover (near stream only)	8
<i>Lomandra longifolia</i>	Ground cover	8
<i>Microlaena stipoides</i>	Ground cover	8
<i>Cyperus gracilis</i>	Sedge	4
<i>Melaleuca ericifolia</i>	Small shrub	1
<i>Casuarina glauca</i>	Tree	0.25

Zone 2		
SPECIES	PLANT TYPE	PLANTING DENSITY Plants/m ²
<i>Melaleuca ericifolia</i>	Small shrub	1
<i>Casuarina glauca</i>	Tree	0.25

Zone 3A		
SPECIES	PLANT TYPE	PLANTING DENSITY Plants/m ²
<i>Themeda australis</i>	Ground cover	8
<i>Wahlenbergia gracilis</i>	Ground cover	8
<i>Commelina cyanea</i>	Ground cover (near stream only)	8
<i>Cheilanthes sieberi</i> subsp. <i>sieberi</i>	Ground cover	8
<i>Austrostipa ramosissima</i>	Ground cover	8
<i>Imperata cylindrica</i> var. <i>major</i>	Ground cover	8
<i>Lomandra longifolia</i>	Ground cover	8
<i>Hardenbergia violacea</i>	Ground cover	8
<i>Bursaria spinosa</i>	Small shrub	.69
<i>Melaleuca ericifolia</i>	Small shrub	.69
<i>Daviesia ulicifolia</i>	Erect spiky shrub	.69
<i>Dillwynia sieberi</i>	Rigid prickly shrub	.69
<i>Indigofera australis</i>	Shrub	.69
<i>Pultenaea microphylla</i>	Erect multi-stemmed shrub	.69
<i>Acacia paramattensis</i> subsp. <i>paramattensis</i>	Tall shrub	.69
<i>Casuarina glauca</i>	Tree	0.0625

Zone 3a		
SPECIES	PLANT TYPE	PLANTING DENSITY Plants/m ²
<i>Themeda australis</i>	Ground cover	8
<i>Wahlenbergia gracilis</i>	Ground cover	8
<i>Commelina cyanea</i>	Ground cover	8
<i>Cheilanthes sieberi</i> subsp. <i>sieberi</i>	Ground cover	8
<i>Austrostipa ramosissima</i>	Ground cover	8
<i>Imperata cylindrica</i> var. <i>major</i>	Ground cover	8
<i>Lomandra longifolia</i>	Ground cover	8
<i>Hardenbergia violacea</i>	Ground cover	8
<i>Bursaria spinosa</i>	Small shrub	.69
<i>Melaleuca ericifolia</i>	Small shrub	.69
<i>Daviesia ulicifolia</i>	Erect spiky shrub	.69
<i>Dillwynia sieberi</i>	Rigid prickly shrub	.69
<i>Indigofera australis</i>	Shrub	.69
<i>Pultenaea microphylla</i>	Erect multi-stemmed shrub	.69
<i>Acacia paramattensis</i> subsp. <i>paramattensis</i>	Tall shrub	.69
<i>Eucalyptus tereticornis</i>	Tree	0.0625
<i>Eucalyptus moluccana</i>	Tree	0.0625
<i>Eucalyptus baueriana</i>	Tree	0.0625
<i>Corymbia maculata</i>	Tree	0.0625
<i>Angophora floribunda</i>	Tree	0.0625

Zone 3b		
SPECIES	PLANT TYPE	PLANTING DENSITY Plants/m ²
<i>Zoysia macrantha</i>	Grass	2000
<i>Paspalum distichum</i>	Grass	1046
<i>Casuarina glauca</i>	Tree	0.5

Zone 4a		
SPECIES	PLANT TYPE	PLANTING DENSITY Plants/m ²
<i>Cyperus gracilis</i>	Sedge	4
<i>Casuarina glauca</i>	Tree	0.25

Zone 4b		
SPECIES	PLANT TYPE	PLANTING DENSITY Plants/m ²
<i>Hardenbergia violacea</i>	Ground cover	8
<i>Lomandra longifolia</i>	Ground cover	8
<i>Imperata cylindrica</i> var. <i>major</i>	Ground cover	8
<i>Bursaria spinosa</i>	Small shrub	.69
<i>Melaleuca ericifolia</i>	Small shrub	.69
<i>Daviesia ulicifolia</i>	Erect spiky shrub	.69
<i>Dillwynia sieberi</i>	Rigid prickly shrub	.69
<i>Indigofera australis</i>	Shrub	.69
<i>Pultenaea microphylla</i>	Erect multi-stemmed shrub	.69
<i>Acacia paramattensis</i> subsp. <i>paramattensis</i>	Tall shrub	.69

© 2012 Site Image (NSW) Pty Ltd. ABN 44 801 262 380 as agent for Site Image NSW Partnership. All rights reserved. This drawing is copyright and shall not be reproduced or copied in any form or by any means (graphic, electronic or mechanical including photocopy) without the written permission of Site Image (NSW) Pty Ltd. Any license, expressed or implied, to use this document for any purpose what so ever is restricted to the terms of the written agreement between Site Image (NSW) Pty Ltd and the instructing party.

The contractor shall check and verify all work on site (including work by others) before commencing the landscape installation. Any discrepancies are to be reported to the Project Manager or Landscape Architect prior to commencing work. Do not scale this drawing. Any required dimensions not shown shall be referred to the Landscape Architect for confirmation.

Issue	Revision Description	Drawn	Check	Date
-	-	-	-	-
-	-	-	-	-
-	-	-	-	-
-	-	-	-	-
-	-	-	-	-
-	-	-	-	-
-	-	-	-	-
-	-	-	-	-
-	-	-	-	-
E	Revised road embankment planting	PH	TC	09.10.2012
D	Amendments to Revised Civil Layout	PH	TC	05.10.2012
C	Issue for S75W	PH	TC	22.06.2012
B	Preliminary	PH	TC	12.04.2012
A	Preliminary	PH	TC	28.03.2012

LEGEND

Existing Trees to be Retained

Proposed trees - *Casuarina glauca*

Proposed trees - Tree species greater than 8m tall

Zone 3a1

Key Plan:

SITE IMAGE

Landscape Architects

Level 1, 3-5 Baptist Street
Surry Hills NSW 2010 Australia
Tel: (61 2) 8332 5600
Fax: (61 2) 8332 5604
www.siteimage.com.au

Site Image (NSW) Pty Ltd
ABN 44 801 262 380

Client:
GOODMAN

Project:
OAKDALE STAGE 2
OPEN SPACE

Drawing Name:
Landscape Planting Plan

Sheet 3 of 5

S75W MOD.5

Scale: 1:250 @ A1

Job Number: SS11-2419

Drawing Number: 403

Issue: E

Joins with Drawing 403

PLANT SCHEDULE

Zone 1

SPECIES	PLANT TYPE	PLANTING DENSITY Plants/m ²
<i>Cyperus gracilis</i>	Ground cover	8
<i>Commelina cyanea</i>	Ground cover (near stream only)	8
<i>Lomandra longifolia</i>	Ground cover	8
<i>Microlaena stipoides</i>	Ground cover	8
<i>Cyperus gracilis</i>	Sedge	4
<i>Melaleuca ericifolia</i>	Small shrub	1
<i>Casuarina glauca</i>	Tree	0.25

Zone 2

SPECIES	PLANT TYPE	PLANTING DENSITY Plants/m ²
<i>Melaleuca ericifolia</i>	Small shrub	1
<i>Casuarina glauca</i>	Tree	0.25

Zone 3A

SPECIES	PLANT TYPE	PLANTING DENSITY Plants/m ²
<i>Themeda australis</i>	Ground cover	8
<i>Wahlenbergia gracilis</i>	Ground cover	8
<i>Commelina cyanea</i>	Ground cover (near stream only)	8
<i>Cheilanthes sieberi</i> subsp. <i>sieberi</i>	Ground cover	8
<i>Austrostipa ramosissima</i>	Ground cover	8
<i>Imperata cylindrica</i> var. <i>major</i>	Ground cover	8
<i>Lomandra longifolia</i>	Ground cover	8
<i>Hardenbergia violacea</i>	Ground cover	8
<i>Bursaria spinosa</i>	Small shrub	69
<i>Melaleuca ericifolia</i>	Small shrub	69
<i>Daviesia ulicifolia</i>	Erect spiky shrub	69
<i>Dillwynia sieberi</i>	Rigid prickly shrub	69
<i>Indigofera australis</i>	Shrub	69
<i>Pultenaea microphylla</i>	Erect multi-stemmed shrub	69
<i>Acacia paramattensis</i> subsp. <i>paramattensis</i>	Tall shrub	69
<i>Casuarina glauca</i>	Tree	0.0625

Zone 3a

SPECIES	PLANT TYPE	PLANTING DENSITY Plants/m ²
<i>Themeda australis</i>	Ground cover	8
<i>Wahlenbergia gracilis</i>	Ground cover	8
<i>Commelina cyanea</i>	Ground cover	8
<i>Cheilanthes sieberi</i> subsp. <i>sieberi</i>	Ground cover	8
<i>Austrostipa ramosissima</i>	Ground cover	8
<i>Imperata cylindrica</i> var. <i>major</i>	Ground cover	8
<i>Lomandra longifolia</i>	Ground cover	8
<i>Hardenbergia violacea</i>	Ground cover	8
<i>Bursaria spinosa</i>	Small shrub	69
<i>Melaleuca ericifolia</i>	Small shrub	69
<i>Daviesia ulicifolia</i>	Erect spiky shrub	69
<i>Dillwynia sieberi</i>	Rigid prickly shrub	69
<i>Indigofera australis</i>	Shrub	69
<i>Pultenaea microphylla</i>	Erect multi-stemmed shrub	69
<i>Acacia paramattensis</i> subsp. <i>paramattensis</i>	Tall shrub	69
<i>Eucalyptus tereticornis</i>	Tree	0.0625
<i>Eucalyptus moluccana</i>	Tree	0.0625
<i>Eucalyptus baueriana</i>	Tree	0.0625
<i>Corymbia maculata</i>	Tree	0.0625
<i>Angophora floribunda</i>	Tree	0.0625

Zone 3b

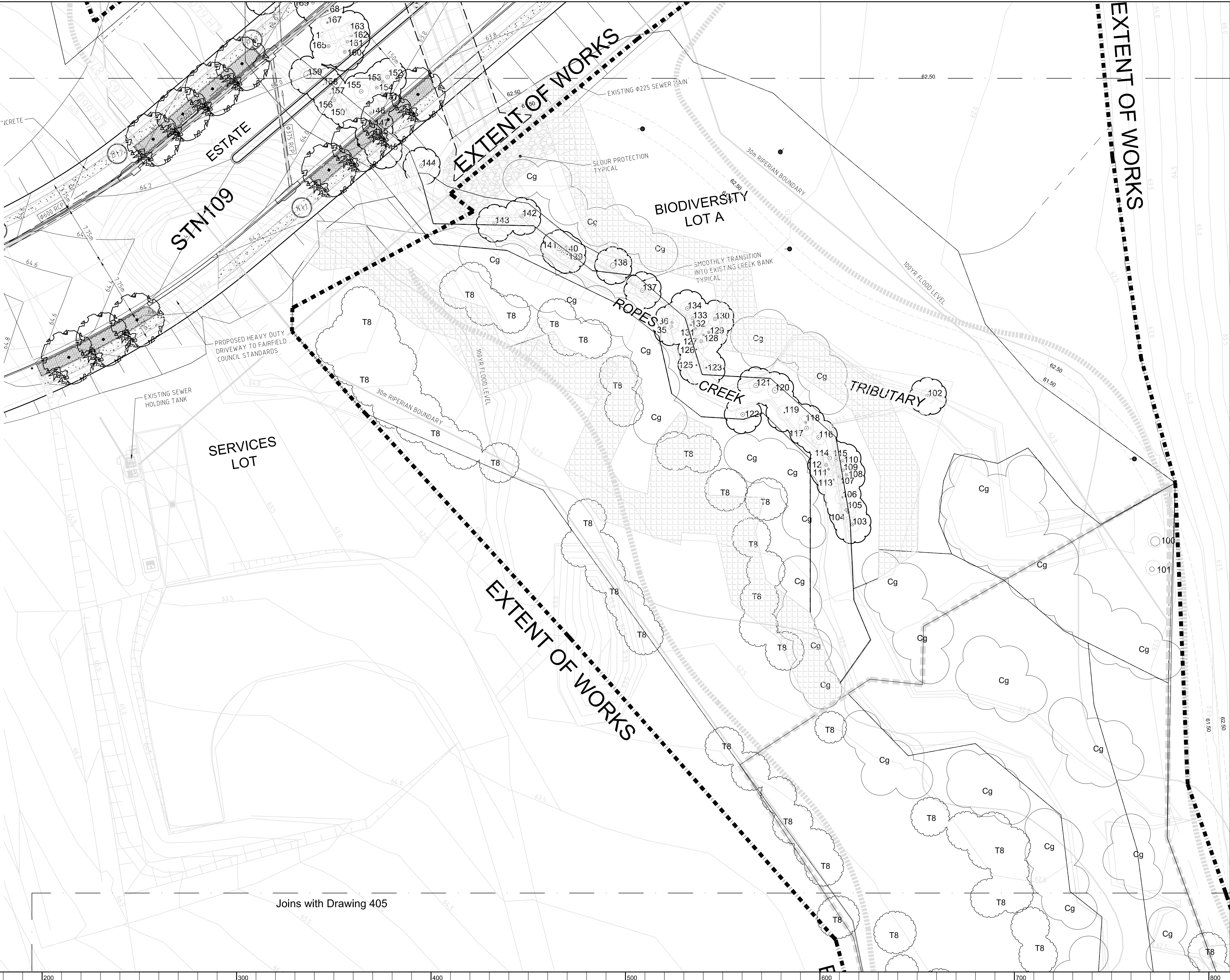
SPECIES	PLANT TYPE	PLANTING DENSITY Plants/m ²
<i>Zoysia macrantha</i>	Grass	2000
<i>Paspalum distichum</i>	Grass	1046
<i>Casuarina glauca</i>	Tree	0.5

Zone 4a

SPECIES	PLANT TYPE	PLANTING DENSITY Plants/m ²
<i>Cyperus gracilis</i>	Sedge	4
<i>Casuarina glauca</i>	Tree	0.25

Zone 4b

SPECIES	PLANT TYPE	PLANTING DENSITY Plants/m ²
<i>Hardenbergia violacea</i>	Ground cover	8
<i>Lomandra longifolia</i>	Ground cover	8
<i>Imperata cylindrica</i> var. <i>major</i>	Ground cover	8
<i>Bursaria spinosa</i>	Small shrub	0.69
<i>Melaleuca ericifolia</i>	Small shrub	0.69
<i>Daviesia ulicifolia</i>	Erect spiky shrub	0.69
<i>Dillwynia sieberi</i>	Rigid prickly shrub	0.69
<i>Indigofera australis</i>	Shrub	0.69
<i>Pultenaea microphylla</i>	Erect multi-stemmed shrub	0.69
<i>Acacia paramattensis</i> subsp. <i>paramattensis</i>	Tall shrub	0.69



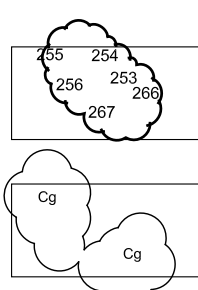
Joins with Drawing 405

© 2012 Site Image (NSW) Pty Ltd. ABN 44 801 262 380 as agent for Site Image NSW Partnership. All rights reserved. This drawing is copyright and shall not be reproduced or copied in any form or by any means (graphic, electronic or mechanical including photocopy) without the written permission of Site Image (NSW) Pty Ltd. Any license, expressed or implied, to use this document for any purpose what so ever is restricted to the terms of the written agreement between Site Image (NSW) Pty Ltd and the instructing party.

The contractor shall check and verify all work on site (including work by others) before commencing the landscape installation. Any discrepancies are to be reported to the Project Manager or Landscape Architect prior to commencing work. Do not scale this drawing. Any required dimensions not shown shall be referred to the Landscape Architect for confirmation.

Issue	Revision Description	Drawn	Check	Date
E	Revised road embankment planting	PH	TC	09.10.2012
D	Amendments to Revised Civil Layout	PH	TC	05.10.2012
C	Issue for S75W	PH	TC	22.06.2012
B	Preliminary	PH	TC	12.04.2012
A	Preliminary	PH	TC	28.03.2012

LEGEND



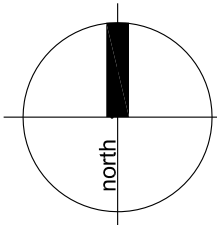
Existing Trees to be Retained

Proposed trees
- Tree species
greater than 8m tall

Proposed trees
- *Casuarina glauca*

Zone 3a1

Key Plan:



Client:
GOODMAN

Project:
**OAKDALE STAGE 2
OPEN SPACE**

Drawing Name:
Landscape Planting Plan

S75W MOD.5

Scale: 1:250 @ A1	0 1 2 4 6 10m	Issue:
Job Number: SS11-2419	Drawing Number: 404	E

Joins with Drawing 404

PLANT SCHEDULE

Zone 1

SPECIES	PLANT TYPE	PLANTING DENSITY Plants/m ²
<i>Cyperus gracilis</i>	Ground cover	8
<i>Commelina cyanea</i>	Ground cover (near stream only)	8
<i>Lomandra longifolia</i>	Ground cover	8
<i>Microlaena stipoides</i>	Ground cover	8
<i>Cyperus gracilis</i>	Sedge	4
<i>Melaleuca ericifolia</i>	Small shrub	1
<i>Casuarina glauca</i>	Tree	0.25

Zone 2

SPECIES	PLANT TYPE	PLANTING DENSITY Plants/m ²
<i>Melaleuca ericifolia</i>	Small shrub	1
<i>Casuarina glauca</i>	Tree	0.25

Zone 3A

SPECIES	PLANT TYPE	PLANTING DENSITY Plants/m ²
<i>Themeda australis</i>	Ground cover	8
<i>Wahlenbergia gracilis</i>	Ground cover	8
<i>Commelina cyanea</i>	Ground cover (near stream only)	8
<i>Cheilanthes sieberi</i> subsp. <i>sieberi</i>	Ground cover	8
<i>Austrostipa ramosissima</i>	Ground cover	8
<i>Imperata cylindrica</i> var. <i>major</i>	Ground cover	8
<i>Lomandra longifolia</i>	Ground cover	8
<i>Hardenbergia violacea</i>	Ground cover	8
<i>Bursaria spinosa</i>	Small shrub	.69
<i>Melaleuca ericifolia</i>	Small shrub	.69
<i>Daviesia ulicifolia</i>	Erect spiky shrub	.69
<i>Dillwynia sieberi</i>	Rigid prickly shrub	.69
<i>Indigofera australis</i>	Shrub	.69
<i>Pultenaea microphylla</i>	Erect multi-stemmed shrub	.69
<i>Acacia paramattensis</i> subsp. <i>paramattensis</i>	Tall shrub	.69
<i>Casuarina glauca</i>	Tree	0.0625

Zone 3a

SPECIES	PLANT TYPE	PLANTING DENSITY Plants/m ²
<i>Themeda australis</i>	Ground cover	8
<i>Wahlenbergia gracilis</i>	Ground cover	8
<i>Commelina cyanea</i>	Ground cover	8
<i>Cheilanthes sieberi</i> subsp. <i>sieberi</i>	Ground cover	8
<i>Austrostipa ramosissima</i>	Ground cover	8
<i>Imperata cylindrica</i> var. <i>major</i>	Ground cover	8
<i>Lomandra longifolia</i>	Ground cover	8
<i>Hardenbergia violacea</i>	Ground cover	8
<i>Bursaria spinosa</i>	Small shrub	.69
<i>Melaleuca ericifolia</i>	Small shrub	.69
<i>Daviesia ulicifolia</i>	Erect spiky shrub	.69
<i>Dillwynia sieberi</i>	Rigid prickly shrub	.69
<i>Indigofera australis</i>	Shrub	.69
<i>Pultenaea microphylla</i>	Erect multi-stemmed shrub	.69
<i>Acacia paramattensis</i> subsp. <i>paramattensis</i>	Tall shrub	.69
<i>Eucalyptus tereticornis</i>	Tree	0.0625
<i>Eucalyptus moluccana</i>	Tree	0.0625
<i>Eucalyptus baueriana</i>	Tree	0.0625
<i>Corymbia maculata</i>	Tree	0.0625
<i>Angophora floribunda</i>	Tree	0.0625

Zone 3b

SPECIES	PLANT TYPE	PLANTING DENSITY Plants/m ²
<i>Zoysia macrantha</i>	Grass	2000
<i>Paspalum distichum</i>	Grass	1046
<i>Casuarina glauca</i>	Tree	0.5

Zone 4a

SPECIES	PLANT TYPE	PLANTING DENSITY Plants/m ²
<i>Cyperus gracilis</i>	Sedge	4
<i>Casuarina glauca</i>	Tree	0.25

Zone 4b

SPECIES	PLANT TYPE	PLANTING DENSITY Plants/m ²
<i>Hardenbergia violacea</i>	Ground cover	8
<i>Lomandra longifolia</i>	Ground cover	8
<i>Imperata cylindrica</i> var. <i>major</i>	Ground cover	8
<i>Bursaria spinosa</i>	Small shrub	0.69
<i>Melaleuca ericifolia</i>	Small shrub	0.69
<i>Daviesia ulicifolia</i>	Erect spiky shrub	0.69
<i>Dillwynia sieberi</i>	Rigid prickly shrub	0.69
<i>Indigofera australis</i>	Shrub	0.69
<i>Pultenaea microphylla</i>	Erect multi-stemmed shrub	0.69
<i>Acacia paramattensis</i> subsp. <i>paramattensis</i>	Tall shrub	0.69

EXTENT OF WORKS

EXTENT OF WORKS

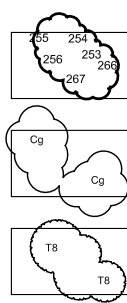
EXTENT OF WORKS

© 2012 Site Image (NSW) Pty Ltd. ABN 44 801 262 380 as agent for Site Image NSW Partnership. All rights reserved. This drawing is copyright and shall not be reproduced or copied in any form or by any means (graphic, electronic or mechanical including photocopy) without the written permission of Site Image (NSW) Pty Ltd. Any license, expressed or implied, to use this document for any purpose what so ever is restricted to the terms of the written agreement between Site Image (NSW) Pty Ltd and the instructing party.

The contractor shall check and verify all work on site (including work by others) before commencing the landscape installation. Any discrepancies are to be reported to the Project Manager or Landscape Architect prior to commencing work. Do not scale this drawing. Any required dimensions not shown shall be referred to the Landscape Architect for confirmation.

Issue	Revision Description	Drawn	Check	Date
D	Amendments to Revised Civil Layout	PH	TC	05.10.2012
C	Issue for S75W	PH	TC	22.06.2012
B	Preliminary	PH	TC	12.04.2012
A	Preliminary	PH	TC	28.03.2012

LEGEND



Existing Trees
to be Retained

Proposed trees
- *Casuarina glauca*

Proposed trees
- Tree species
greater than 8m tall

Zone 1

Zone 2

Zone 3a2

Zone 3b

Zone 4a

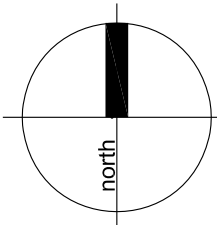
Zone 4b

Saline area

Zone 3a1

Proposed Turf
- By Seed

Key Plan:



Client:
GOODMAN

Project:
OAKDALE STAGE 2
OPEN SPACE

Drawing Name:
Landscape Planting Plan

S75W MOD.5

Scale: 1:250 @ A1

Job Number: SS11-2419

Drawing Number: 405

Issue: D