






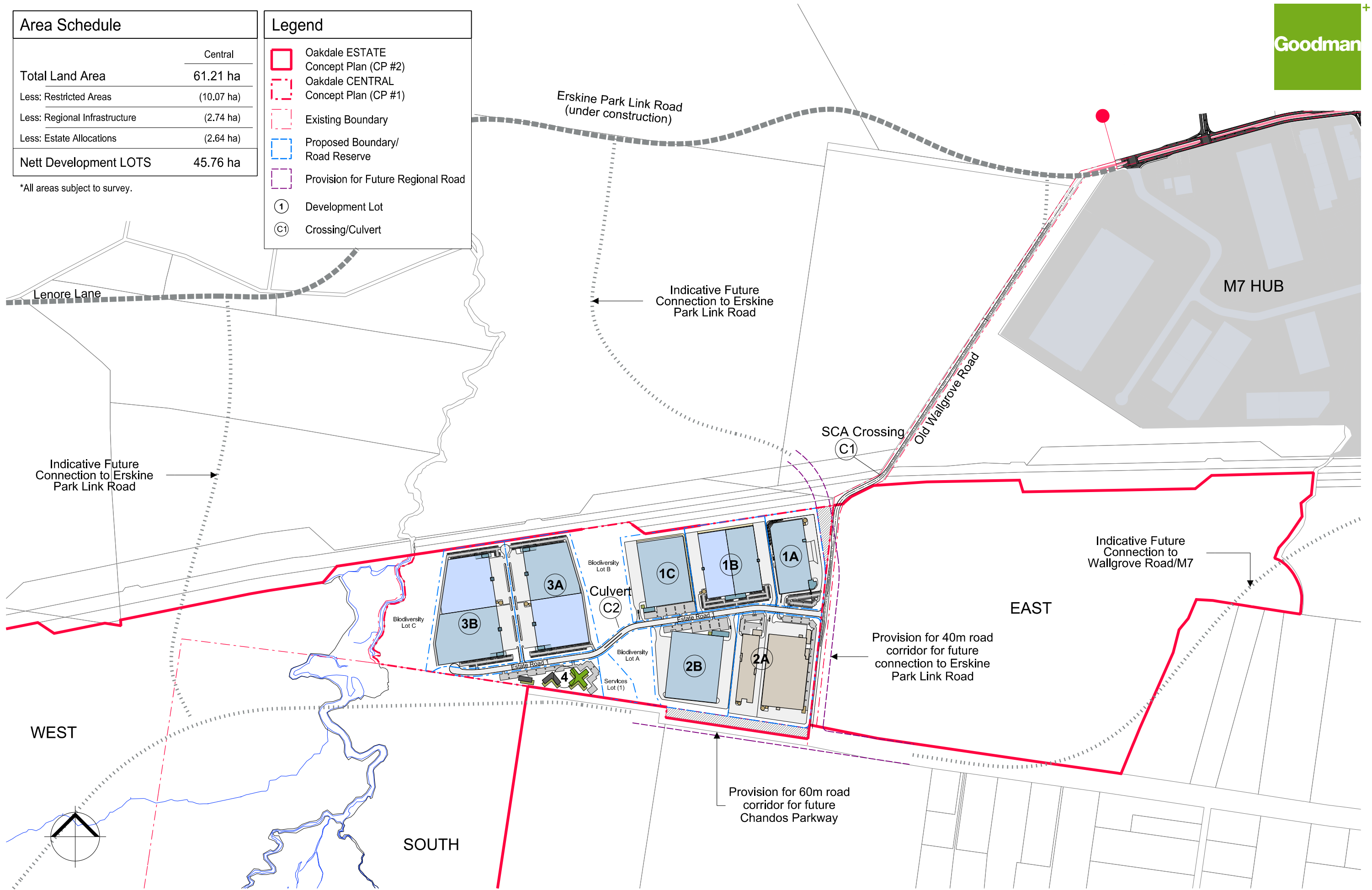




	Central
Total Land Area	61.21 ha
Less: Restricted Areas	(10.07 ha)
Less: Regional Infrastructure	(2.74 ha)
Less: Estate Allocations	(2.64 ha)
Nett Development LOTS	45.76 ha

\*All areas subject to survey.

-  Oakdale ESTATE  
Concept Plan (CP #2)
-  Oakdale CENTRAL  
Concept Plan (CP #1)
-  Existing Boundary
-  Proposed Boundary/  
Road Reserve
-  Provision for Future Regional Road
-  ① Development Lot
-  (C1) Crossing/Culvert



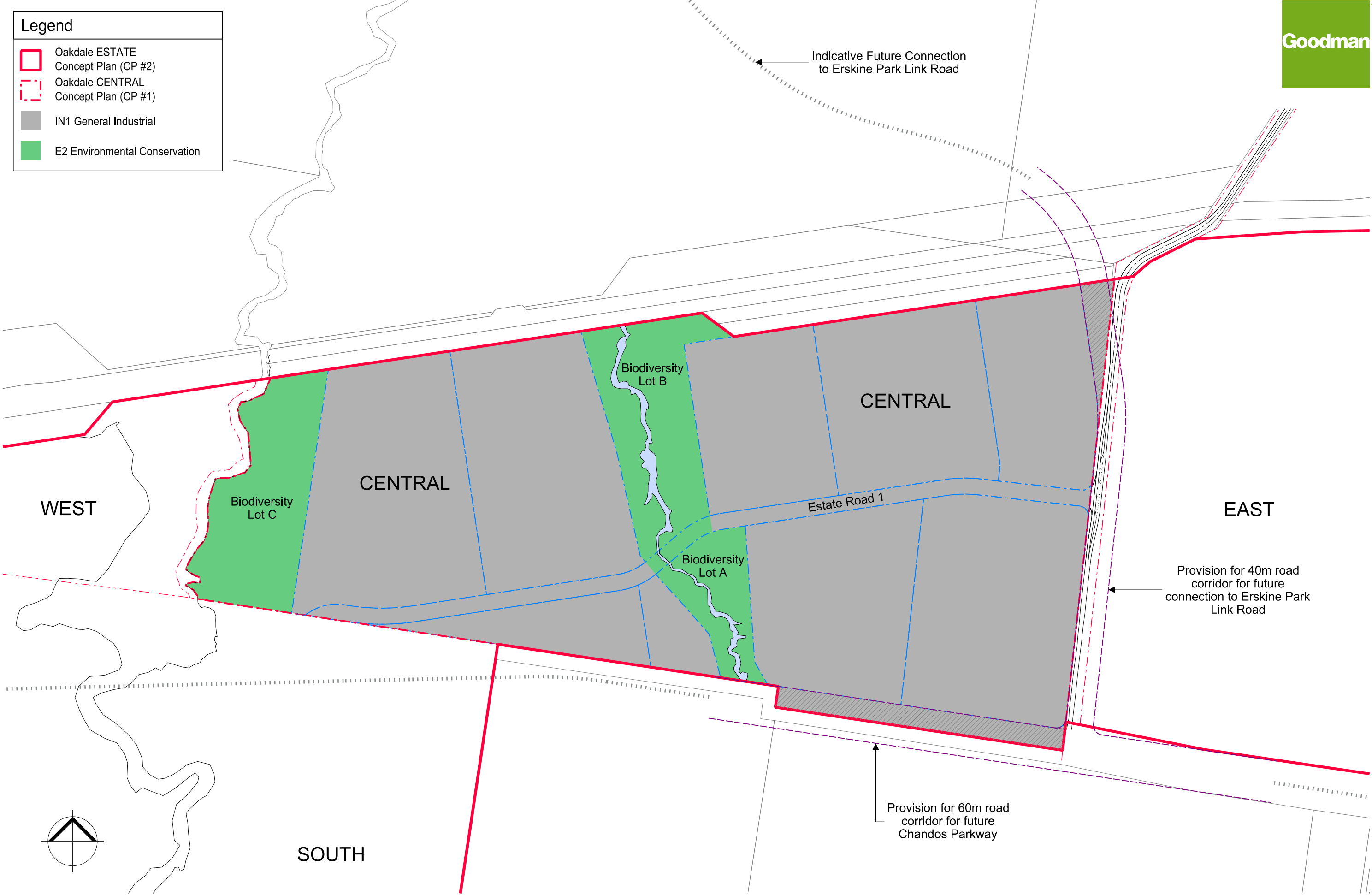
Legend

Oakdale ESTATE  
Concept Plan (CP #2)

Oakdale CENTRAL  
Concept Plan (CP #1)

IN1 General Industrial

E2 Environmental Conservation



Legend

Oakdale ESTATE  
Concept Plan (CP #2)

Oakdale CENTRAL  
Concept Plan (CP #1)

Area of Vegetation Management - 4.7 ha

The map illustrates the Vegetation Management Plan for Oakdale CENTRAL Concept Plan (CP#1 - MOD2). It shows the following features:

- Area of Vegetation Management:** A green-shaded area totaling 4.7 ha, consisting of Biodiversity Lot A, Lot B, and Lot C.
- Core Riparian Zone:** A blue-shaded area along the watercourse.
- 1 in 100 yr Flood Line:** Indicated by orange lines.
- Estate Road 1:** A blue dashed line representing the road layout.
- Road Corridors:**
  - Provision for 40m road corridor for future connection to Erskine Park Link Road.
  - Provision for 60m road corridor for future Chandos Parkway.
- Indicative Future Connection:** A dotted line showing a future connection to Erskine Park Link Road.
- Orientation:** WEST, CENTRAL, EAST, and SOUTH directions are marked.

design+

Oakdale CENTRAL  
Horsley Park

CENTRAL Concept Plan (CP#1 - MOD2)  
Proposed S75W Modification to CP#1 (08\_0065 MOD 2)

Vegetation Management Plan

1:2500 @ A1  
1:5000 @ A3  
2 Oct 12 MO

OAK CP1 04 (E)

0 50 250