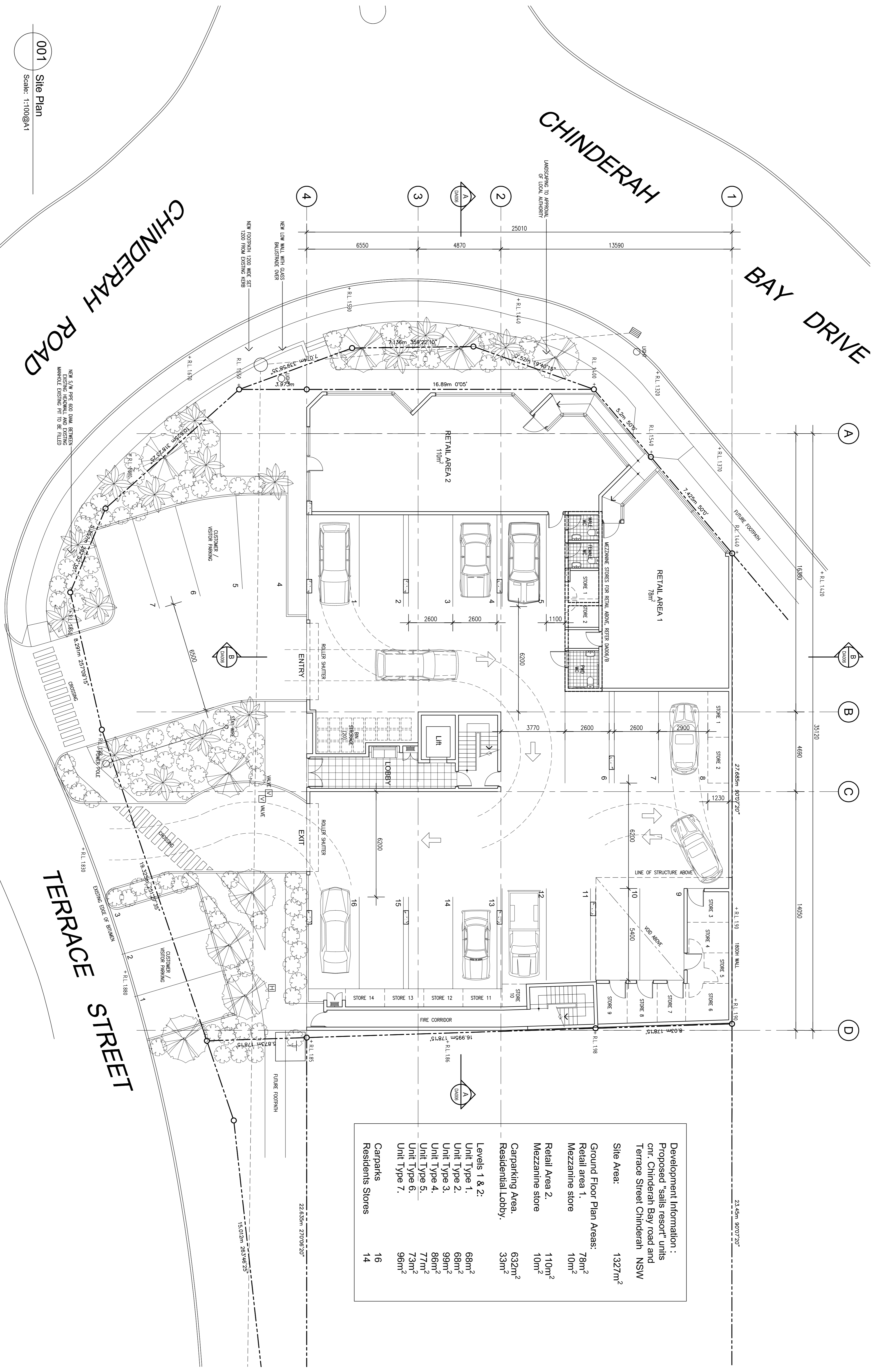


Amendment	INITIAL ISSUE
A	14.06.06
B	26.06.06
C	26.06.06

**Project:**  
PROPOSED "SALS RESORT" UNITS  
CNR CHINDERAH BAY ROAD AND  
TERRACE STREET CHINDERAH NSW

**Site Details:**  
LOT 1 DP128722 AND LOT A DP345689  
PARISH OF CUDGEN COUNTY OF ROUS

Designed by:	Drawn by:	Drawing Scale:	Drawing Number:	Issue
P.P.	R.M.	1:100@A1	035 - DA001	C



**Development Information :**  
Proposed "sals resort" units  
cnr. Chinderah Bay road and  
Terrace Street Chinderah NSW

**Site Area:** 1327m<sup>2</sup>

**Ground Floor Plan Areas:**  
Retail area 1. 78m<sup>2</sup>  
Mezzanine store 10m<sup>2</sup>  
Retail Area 2. 110m<sup>2</sup>  
Mezzanine store 10m<sup>2</sup>  
Residential Lobby. 33m<sup>2</sup>  
Levels 1 & 2:  
Unit Type 1. 68m<sup>2</sup>  
Unit Type 2. 68m<sup>2</sup>  
Unit Type 3. 99m<sup>2</sup>  
Unit Type 4. 86m<sup>2</sup>  
Unit Type 5. 77m<sup>2</sup>  
Unit Type 6. 73m<sup>2</sup>  
Unit Type 7. 96m<sup>2</sup>

**Carparks**  
Residents Stores 16  
14

**Amendment**

Amendment	INITIAL ISSUE
A	14.06.06
B	26.06.06
C	26.06.06

**Project:**  
PROPOSED "SALS RESORT" UNITS  
CNR CHINDERAH BAY ROAD AND  
TERRACE STREET CHINDERAH NSW

**Site Details:**  
LOT 1 DP128722 AND LOT A DP345689  
PARISH OF CUDGEN COUNTY OF ROUS

Designed by:	Drawn by:	Drawing Scale:	Drawing Number:	Issue
P.P.	R.M.	1:100@A1	035 - DA001	C