

Job No: X10274.01

22 December 2010

Department of Planning
Major Project Assessment
GPO Box 39,
SYDNEY NSW 2001

Attention: Clay Preshaw (via email: clay.preshaw@planning.nsw.gov.au)

Dear Major Project Assessment Section,

RE: MP 09_0048 Camden Gas Project – Submission on behalf of land owner of Lot 102 DP 1153216 Badgally Road, Catherine Fields

Reference is made to the Camden Gas Project – Northern Expansion being Major Project MP 09_0048 prepared on behalf of AGL which has recently been on public exhibition.

On behalf of the land owner and developer that recently acquired the subject property we are seeking to make a late submission on the application and in particular objecting to any potential impacts associated with the 200m buffer area from a gas well on the future residential development.

We act for The Broad Acre Development Company Pty Ltd being the owner of the subject property that recently acquired the land from Sekisui House. The property is part of the Turner Road Release Area within the South West Growth Centres and is zoned for residential purposes. The property is zoned R1 General Residential under the State Environmental Planning Policy (Sydney Growth Centres) 2006 and sits within the Turner Road Precinct Plan. Under the Precinct Plan the property has development potential for some 160 residential lots in accordance with the planning controls and the indicative road layout plan.

It has come to our attention that as part of the Gas Project that the surface gas well identified as no. CU02 in Catherine Fields is situated adjacent to this residential property and the 200m buffer area impacts on the residential development. Please find attached a site plan showing the location of the gas well on the Turner Road - Indicative Layout Plan in relation to the development of Lot 102.

The Environmental Assessment (EA) report prepared by AECOM accompanying the Major Project application gives reference to the Turner Road Release Area and identifies the siting of the surface gas well as follows:



“CU06 and CU02 would utilise future open space areas within Turner Road.” (Reference: Page 8-4)

In addition the EA reports that in relation to the future development the gas wells will not significantly impact the future development as stated:

“With future urban (residential, commercial and industrial) development potentially encroaching within this distance, a minimum buffer of 20 m to the nearest residential development is recommended by the DoPs Locational Guidelines.” (Reference: Page 8-9)

It is pointed out that the figures that are provided in the EA in relation to gas well CU02, being Figure 29 and 32, do not accurately show the relationship with the residential land in the SEPP Growth Centres and the Turner Road - Indicative Layout Plan. Figure 29 seems to indicate that this gas well (CU02) and associated buffer is outside the residential land. It is contended that this figure does not accurately reflect the subject property (Lot 102) being included as residential zoned land. In relating the position of gas well CU02 as shown in Figure 32 the buffer area as plotted by us significantly affects the residential development land of Lot 102 (see Attachment).

As stated in the EA report that CU02 is to be located in “future open space area within the Turner Road” release area, it is this submission that this gas well needs to be relocated approx some 150 – 160m to the west to be placed in the open space corridor in the identified Employment Area. Should the gas well be relocated to the west as suggested the buffer areas would not affect the residential development.

The developer is concerned with the exhibition of this EA report and the location of this gas well that may impact on the impending residential development of the subject property. The developer intends to lodge a development application to Camden Council in January 2011 with construction of the residential lots to commence in March 2011. The concern is that any potential purchasers of residential lots will have drawn to their attention the gas well location and the 200m buffer area that may adversely affect the sale of the lots.

On behalf of the developer we are seeking assurance that the gas well CU02 should be relocated in a westerly direction to be sited within the Employment Area in that area identified as Open Space Corridor and as a consequence the buffer area will not impact of the residential development of Lot 102. We are prepared to meet with the Department of Planning and / or AGL representatives to discuss this submission and can be contacted on 8808 5000.

Yours faithfully,

BROWN CONSULTING (NSW) PTY LTD

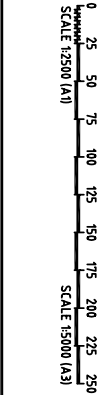


PETER LEE

Manager – Planning

Attachment – Plan showing location of Gas Well CU02 in relation to the subject property and Turner Rd release area.

SURVEY	REDUCTION RATIO			
	PLAN	1:2500	@	A1
	DATUM	A.H.D.	DESIGN	P.L.
TRACED	A.C.	DATE	22-12-10	



Disclaimer and Copyright:
ALL DIMENSIONS TO BE
CONSIDERED AS APPROXIMATE
SUPERINTENDANT PRIOR TO
CONSTRUCTION. USE WRITTEN
DIMENSIONS ONLY, DO NOT
SCALE.
Brown Consulting (NSW) Pty Ltd
Level 2/7 Bishop Street, Homebush NSW 1589 Australia
Telephone: 02 8803 3000 Facsimile: 02 8803 3099
Brown Consulting (NSW) Pty Ltd
Level 2/7 Bishop Street, Homebush NSW 1589 Australia
Telephone: 02 8803 3000 Facsimile: 02 8803 3099

**BROWN**

Level 2/7 Bishop Street, Homebush NSW 1589 Australia
Telephone: 02 8803 3000 Facsimile: 02 8803 3099

Brown Consulting (NSW) Pty Ltd
Level 2/7 Bishop Street, Homebush NSW 1589 Australia
Telephone: 02 8803 3000 Facsimile: 02 8803 3099

CLIENT :
**THE BROAD ACRE
DEVELOPMENT COMPANY P/L**

TURNER ROAD INDICATIVE LAYOUT PLAN LOCATION
GAS WELL - LOT 102 DP 1153216
SUBMISSION ON MP09-0048
GAS WELL CU02

0	ORIGINAL ISSUE	22-12-10
ISSUE	DESCRIPTION	DATE
DRAWING. No.	X10200-F2	
SHEET 1 OF 1 SHEETS		
0	AMEND	



Mr Clay Preshaw
Major Projects Assessment
NSW Department of Planning
GPO Box 39
Sydney NSW 2001

8 December 2010

Dear Mr Preshaw,

Re: Camden Gas Project Stage 3a (Northern Expansion)

I write on behalf of the community of Discalced Carmelite friars, 247 St Andrews Road, Varroville, to make a submission in regard to this proposed Northern Expansion of the Camden Gas Field Stage 3a.

Carmelite friars and our interest in this proposed project:

This community has lived and worked on this property of over 300 acres since 1964. On our land we have a retreat centre with conference facilities for residential guests, plus Mount Carmel parish church and Mount Carmel Catholic high school, as well as the community of Discalced Carmelite nuns who will make a separate submission.

At present the community is in the process of obtaining approval from Campbelltown City Council for a new priory for our own accommodation. When this is complete we will then refurbish the retreat centre buildings since retreat work is our main source of income. It is our intention to stay on this site which we have cared for as a sacred trust since 1964. It is also holy ground as the last resting place of those of the community who have died.

Our property is part of the Scenic Hills Environmental Protection Area. This has enabled us to quietly live our contemplative religious life together, to serve the spiritual and religious needs of the local people and to welcome people from all over Sydney, all states of Australia as well as from overseas.

We believe that the approval of the **Northern Expansion of the Camden Gas Project Stage 3a** is essentially a move to industrialise the Scenic Hills Environmental Protection Area. Given that the proposed expansion is one of 72 well-heads it is clear the expansion is of a major industrial size and impact. As a consequence of its size there would be disruption from noise, heavy traffic (rigs water tankers), as well as likely long term problems associated with air pollution, subsidence and damage to the quality of surface and ground water.

These consequences affect us directly in that they would undermine our continued ability to live our religious life on this site and to run our retreat centre as an attractive, safe and healthy place for spiritual and religious exercises. This is our main house. We are not a wealthy Order and, as this is the only land we own in Australia, we have nowhere else to go.

We are aware of the possible negative environmental impact this proposed development will have on the Scenic Hills area and the City of Campbelltown. I shall shortly detail these concerns. However I

think it relevant to recall the experience of our community in dealing with representatives of AGL. In July 2006 we received a letter from AGL asking us to consider the placement of gas wells on our property. They sought a meeting with us to explain what was involved.

Representatives of AGL addressed the community in August 2006. At that meeting it was stressed that we were being offered the opportunity to be part of an exciting, clean and green solution to Sydney's energy requirements. It was also an opportunity for us to share financial benefits. There was no mention that there might be any environmental issues with the process.

As it turns out, this was certainly less than frank. For example, an apologist for "fracking", Paul Sheehan, wrote in his column in the Sydney Morning Herald on 6 December 2010: "No energy extraction process is without problems". Thankfully, we did not accept the AGL offer.

In hindsight it was an exercise in persuasion or salesmanship rather than an objective exposition of all the issues involved. If it had been the latter our decision not to take up the offer would have been simpler. As a result of AGL's approach I now read whatever they present in advocating for an expansion of the Camden gas field with a strong desire to test every assertion and to seek independent confirmation of all claims. For AGL this project is, seemingly, a large commercial venture of significant benefit, above all, to its shareholders.

Camden Gas Project Stage 3a (Northern Expansion)

AGL has supplied a considerable amount of documentation in support of its application. However there are very significant gaps as well as problems with the case that has been made.

Firstly: the project is defined as a public utility undertaking. It is hard to know how extractive mining of coal gas is a public utility. It is simply a commercial venture, similar to that AGL has undertaken in the Hunter Valley where the gas is to be liquified and sold to Japan. Presumably AGL are entitled to do the same with the gas from this project. Their track record leads us to believe that the project is a commercial enterprise of primary benefit to its shareholders.

Secondly: AGL has not given clear or sufficient information about the processes involved in the proposed project for it to be adequately assessed. In our view the submission is not up to the standard required for a Major Projects Assessment.

For example it is stated that hydro fracturing involves the injection of a slurry of water and sand. There is no mention of chemical additives. Yet we know there will be chemical additives. These have not been specified.

As well, disturbingly, there is no hydrology study at all. This is essential to assess the impact of the proposed development on both surface and ground water. The position statement on Coal Seam Gas and Water by the Australian Government's National Water Commission of December 2010 is sobering reading.

The whole document is important in identifying key risks associated with Coal Seam Gas extraction and stem from "the large quantities of water being extracted, the depressurisation of coal seam aquifers and adverse effects on surface and ground water systems". "If not adequately managed and regulated, the industry risks significant, long term adverse impacts."

The National Water Commission's summary comments apply to the assessment of this application: "The consequences of not managing the water risks and uncertainties associated with the economic benefits of CSG are substantial. Therefore the Commission strongly argues for the careful, transparent and integrated consideration of water related impacts in all approval processes."

If there is any spill of contaminated water from at least some of the wells then that waste will flow through our property to Bunbury Curran Creek and into the Georges River. The environmental consequences will not only affect us but a whole river system.

Grouping of wells is a relatively new procedure with a number of uncertainties. AGL asserts that concrete reinforcing will provide strength. This has not to our knowledge been tested. Drilling from each of these wells will extend up to 2500m. This is a significant area that may well be subject to subsidence.

These lacks in the submission are clear to us who are merely laymen in this area. Experts would, no doubt, provide many more examples. What is abundantly clear however is that any approval without adequate scientific scrutiny would be morally dubious and open to legal challenge. These issues need to be clearly resolved before any approval to develop is given and not afterwards.

Thirdly: The Scenic Hills are an environmental protection area. They are visually important for the City of Campbelltown and help provide a sense of place. The Scenic Hills area protects critically endangered remnant Cumberland Plain woodland with its fauna and flora.

The Scenic Hills also protect our historical heritage and landscape. There is much evidence of Aboriginal use of the land. This land is part of the Yendell'ora ("peace between nations") gathering area where Aborigines from as far south as Melbourne and as far north as Maroochydore gathered each generation to resolve the law, reconcile conflicts.

Historic homes like "Varro Ville House" lie in a landscape with links to the early days of New South Wales. Given the particular problems related to air pollution in the Campbelltown area the Scenic Hills are also considered to be one of the two lungs of the city (the other being the parkland along the Georges River).

For us who are residents of the area it has been a continuous battle to stop what one NSW State Minister of Planning described to me as rapacious and mercenary development.

The land is already stressed and needs to be preserved and protected from inappropriate development. As landowners in the immediate area of the proposed development we are concerned about the impact of the project on the land through subsidence, as well as the fauna and flora of the area. There is the real possibility that air pollution may make our continued healthy living here compromised. We are also concerned about the impact on the surface and ground water systems of the area.

We urge the NSW Department of Planning to reject the proposed Camden Gas Project Stage 3 (Northern Expansion).

Yours sincerely,

Rev. Gregory Burke



Carmel of Mary and Joseph 345 St Andrews Road Varroville NSW 2565 Australia

☎ 02 9820 3048; fax 02 9820 3711 email: jkramer@carmelvarroville.org.au

15 December 2010

Mr Clay Preshaw
Major Projects Assessment
NSW Department of Planning
GPO Box 39
Sydney NSW 2001

Dear Mr Preshaw,

RE: Camden Gas Project Stage 3 (Northern Expansion) – submission from the Carmelite Nuns, Varroville

Dear Mr Preshaw,

Please find attached our submission from the Carmelite Nuns, Varroville, concerning the proposal for the above Project.

Thank you for granting us an extension of time for submitting our response.

Yours sincerely,

Sister Jocelyn Kramer
for the Carmelite Nuns, Varroville:

Sisters Sarah Carpenter, Joan Fanning, Elizabeth Franks, Patricia Giuliano, Helen Hill, Jennifer Jones, Jocelyn Kramer, Dulcie McGee, Alice Mulcare, Gemma O'Keeffe, Alice Page, Kathleen Page, Anna Skoczylas

Submission from the Carmelite Nuns, Varroville, to the Department of Planning re Stage 3 Camden Gas Project (Northern Expansion)

Thank you for granting our community an extension of time to make a submission about this proposal.

Our submission contains some general observations about the justification for the Project, followed by identification of specific issues that concern us: impact of the proposed Project on surface and groundwater, noise assessment, social impact of the Project, the Preliminary Hazard Analysis and the likelihood of future modifications and approvals to enable further expansion of the proposed Project.

General observations

Whilst acknowledging the benefits of exploring and extracting energy resources in NSW, we wish to express several concerns about the proposed Project as presented in the Environmental Assessment, Main Report.

The proposal involves extension of the Camden Gas Project into the Sydney Metropolitan Area. It is for the purpose of extracting coal seam gas, a non-renewable finite source of energy. The Project as described has a lifespan of 15-20 years. As a matter of principle, we favour research and development of renewable sustainable sources of energy, rather than exploitation of finite carbon-rich fossil fuels.

The Northern Expansion of the Camden Gas Project involves gas extraction in the Scenic Hills area, which has been zoned Environmental Protection (Scenic) for decades. The Scenic Hills themselves constitute a finite non-renewable resource, providing for the physical, psychological and spiritual health of the residents of south-western Sydney. We object to exploitation of the Scenic Hills for industrial and commercial purposes. We favour their development as a heritage area (aboriginal and European), a recreational area and/or nature reserve, as well as continuing agricultural/grazing activities as at present. We do not support the construction of gas wells and infrastructure, including access roads for heavy traffic such as semi-trailers and prime movers (Main Report, page 19-9) in this protected area, which is essential green space for residents of the City of Campbelltown.

Although the Project does not fall within the definition of industry under SEPP 33, it involves gas mining/extraction, and therefore we question the legal basis for the premise that the Project is 'appropriately' designated a 'public utility undertaking'. If it were, one would expect the Preliminary Hazard Analysis (Appendix D) to be concerned about the risk to the public of loss of supply of gas. But this risk is assessed as not critical (Appendix D, page 8). We have sought and received advice that the Proponent's interpretation that the Project is appropriately designated a public utility undertaking is open to question, and we do question it. To us it seems disingenuous. We wish to see AGL's interpretation exposed to scrutiny through a public enquiry and/or legal process.

Reports in the media about coal seam gas mining in Queensland, the Liverpool Plains and in the Hunter Region of NSW, together with the fatal gas explosion last month in the longwall coal mine in Greymouth, New Zealand, and the recent release of the

American film Gaslands, have alerted us to the serious health and environmental hazards associated with coal seam gas. We are concerned about the apparent lack of regulatory controls on coal seam gas extraction.

Much of the Main Report is couched in vague, non-specific language, which gives us no confidence that the real impacts of the Project are known or understood by the Proponents. It appears to us that the precautionary principle is paid only lip-service in the Environmental Assessment (Main Report, page 26-3).

Specific concerns

1. Water

The Carmelite Community is concerned about the potential impact of the Project (specifically hydro-fracturing) on surface and groundwater in the semi-rural area of the Scenic Hills. Varroville is in a localised rain shadow area, and water is a scarce resource here. This was evident to us in the 10-year drought which has broken recently. We have storage dams from which we pump water for garden use. Historic Varro Ville house nearby, with its surrounding land comprising the original Varroville estate, has heritage dams built in colonial days, said to be located over springs identified by local aboriginal people in the nineteenth century. We understand from conversation with John Ross (AGL's hydrogeologist, 10 December 2010) that there is a low probability of springs in the area, but that their existence cannot be ruled out.

According to the Position Statement released by the National Water Commission (December 2010), risks identified by the Commission 'stem from the large volumes of water being extracted, the depressurisation of coal seam aquifers, and the disposal of large volumes of treated waste water. In addition, the practice of hydro-fracturing to increase gas output has the potential to induce connection and cross-contamination between aquifers, with impacts on groundwater quality. If not adequately managed and regulated, the coal seam gas industry risks significant, long-term and adverse impacts on surface and groundwater systems.'

The conspicuous lack of any site-specific hydrology study in the Environmental Assessment for the proposed Project is of major concern to us. In this respect, the EA fails to meet the standards recently specified by the National Water Commission as follows:

- 'Adequate monitoring, including baseline assessment of surface and groundwater systems, should be undertaken to provide a benchmark for assessing cumulative impacts on other water users and water-dependent ecosystems.'
- 'Jurisdictions should undertake water and land-use change planning and management processes in an integrated way to ensure that water planning implications of projects are addressed prior to final development approval.'

Further, the Commission states that the consequences of not managing the water risks and uncertainties associated with the economic benefits of coal seam gas are substantial. Therefore, the Commission strongly argues for the careful, transparent and integrated consideration of water-related impacts in all approval processes. The current Project does not meet these criteria.

The National Water Commission's position statement reinforces our community's concerns. In line with the Commission's call for a precautionary approach to planning for and managing coal seam gas activities, we request that a thorough site-specific hydrology study be undertaken before any determination is made concerning the Project.

Following personal discussions with John Ross, AGL's manager hydrogeology (10 December 2010), we understand that baseline monitoring of groundwater is to be undertaken within the proposed Surface Project Area prior to any extractive operations. Whilst we welcome this initiative, we also support Campbelltown City Council's call for a Project-specific hydrology study to be completed prior to determination.

We list here some specific water-related questions that we wish to see answered before any determination is made in relation to the Project:

Main report: On page 9-3 it is stated that drilling and fracture stimulation water would be delivered from previous drilling and fracture stimulation campaigns, other approved sources (which?) or from licensed stand-pipes in the local area. Does this mean that large tankers will rumble up and down St Andrews Road from the stand-pipe opposite the Mount Carmel Parish Church and outside the front gate of Varro Ville (heritage) House in order to reach VV07? If so, they will inevitably create noise disturbance in the parish church, two monasteries and a Retreat Centre dedicated to contemplative prayer.

The next paragraph states that 'the proposed works would include the construction of water storage tanks at some locations.' Exactly which locations? We think that these details should be specified in advance of public consultation. Since they are not, and specific information is not available for any well location, the public is not in a position to make informed assessment of the proposals.

Similar uninformative non-specific comments are made in several places on page 9-5: 'A water management system, including water gathering lines where necessary... (Where will it be necessary?)... 'Where feasible, a central water collection point would be considered' (Where might this be? What determines feasibility?)... 'Saline water produced from the wells would be stored either in lined drill pits or water storage tanks' (Who and what determines this decision? How will waste water be stored at well location VV07?) 'Sediment and water containment controls such as silt fences and bunding would be utilised where appropriate to prevent the transport of sediment laden runoff in the vicinity of the Upper Canal' (How is appropriateness determined?)

2. Noise

The two Carmelite monasteries in Varroville house religious communities dedicated to a life of contemplative prayer. We chose to live here because the tranquil semi-rural environment with its relative silence and scenic beauty is conducive to our way of life. People join us for religious services every day, and to ask us for our prayer support for them in their various needs. The community of friars (monks) earns its income from running a Retreat Centre providing residential retreats. Their ability to

provide this facility depends on having quiet peaceful surroundings. The livelihood of both communities of friars and nuns would be threatened by industrialisation of the Scenic Hills.

The Main Report for the Project makes no mention of these sensitive land uses at Varroville. We are particularly concerned about the possibility of noise disturbance from the proposed wells VV07 (adjacent to us) and VV11 across the Upper Canal. Whilst the Noise and Vibration Impact Assessment undertaken by Heggies Pty Ltd (Appendix F) appears comprehensive, we consider that the measurement of noise impact is inadequate in various respects as it relates to Varroville.

The nearest noise monitoring location was Location 3 (51 St Andrews Road, Leppington), classified as a suburban area. We consider that noise monitoring should have been undertaken at Varroville (east of the Upper Canal), on or close to our property (345 St Andrews Road), which is best described as rural rather than suburban. Ours is a residential property, housing thirteen (13) residents (nuns) in the Carmel of Mary and Joseph. Our life of prayer continues day and night every day of the year, starting formally at 6:00 a.m. daily and ending at 9:00 p.m. daily (though sisters continue to read and pray privately later into the night). We do not fit neatly into any of the categories listed in the tables in Appendix F, since ours is a residential place of worship, in use 24 hours a day 7 days a week throughout the year. Table 4 refers to sensitive land uses *other than* residences. The description beneath Table 4 of passive recreation areas, 'characterised by contemplative activities that generate little noise and where benefits are compromised by external noise intrusion, for example, reading, meditation', accurately describes our way of life and our need for quiet surroundings. Hence the need for baseline background ambient noise monitoring in this location. Since it seems to us that the background noise levels for our specific situation have not been accurately described, we consider that the operational project-specific criteria and construction noise goals also need to be reviewed and amended to reflect our sensitive land-use situation.

If six wells are to be drilled at VV07, this will involve 24-hour a day continuous drilling for up to six months in addition to nine months of construction noise. If the same is to be done at VV11, we are potentially exposed to over a year of unremitting noise disturbance. It is also possible that we will receive noise impact from wells south of Varroville since we are located in an elevated position, and the prevailing winds come predominantly from the south (Appendix D, Figure 2). This possibility has not been taken into account in the noise impact assessment.

It appears to us that none of the underlying assumptions used in the noise contour modelling are appropriate for our situation (Figures 10, 21, 22, Appendix F). The conclusion that no mitigation is required for night-time drilling at VV07 is incorrect, since our monastery lies within the relevant (sic) night-time construction noise goal for residential locations in the subject area (Figure 21). Moreover, we consider it unsatisfactory that 'the sound power level of the actual drilling equipment to be utilised for the Northern Expansion project is, as yet, unknown' (Appendix F, page 27).

As for scheduling noisy construction work during periods when people are least likely to be affected, there is no time when we are least likely to be affected, given our daily

timetable in which our chapel is in use seven times a day between 6:00 a.m. and 9:00 p.m. seven days a week. It is stated that we could be exposed to construction noise levels above the Highly Noise Affected levels from VV07 and VV11 (Appendix F, page 34). Since this is an area zoned Environmental Protection (Scenic), we consider it inappropriate to install ugly temporary noise mitigation measures such as shipping containers (Appendix F, page 27) or permanent measures such as fencing and earth mounds.

Finally, we question the conclusions drawn in Appendix F in relation to our particular situation at Varroville and expect that exceedances of the construction noise criteria and operational noise emission levels will adversely impact upon our way of life.

For all the reasons given above, we request that further noise monitoring be undertaken in the vicinity of our property before any determination is made regarding this Project.

3. Social impact

Chapter 8 (Land Use) of the Main Report describes Varroville, located in the Upper Surface Project Area, as 'known for its beautiful hills, sweeping views and old farms. Varroville exhibits a less dense form of residential development compared with neighbouring Raby... Agriculture represents some 16% of land use in the Campbelltown LGA and is important within the Camden and Campbelltown LGAs not only for its economic benefits but also for its cultural and landscape values... Large areas of land forming part of the Subsurface and Surface Project Area within the Campbelltown and Camden LGAs are zoned for environmental protection due to their scenic value. These lands are generally located on either side of the Upper Canal easement' (pages 8-2 and 8-3).

The Upper Canal easement is precisely the area in which the main spine line and gas gathering lines are to be located, and around which the proposed well locations are clustered.

We find it disturbing that the proposal includes locating a portion of the gas gathering system within the Mount Annan Botanical Gardens, which are variously described as Sydney's largest (Main Report, page 8-3) and Australia's largest (Main Report, page 8-2) botanic gardens. We feel outraged that the Department of Planning could allow a commercial development to encroach upon or be located within the confines of a botanical garden, which by its very nature is of State and National significance.

The National Water Commission's Coal Seam Gas and Water position statement (December 2010) notes that coal seam gas development could cause significant social impacts by disrupting current land-use practices and the local environment through infrastructure construction and access. It is inevitable that infrastructure construction and access will adversely affect the Scenic Hills, since it will require upgrading roads and tracks to allow for heavy vehicles such as semi-trailers and prime movers carrying rigs, earth movers, graders, excavators, chain trenchers, pumps and generators. Water tankers and delivery vehicles will also need access. We note that water truck movements alone in the Menangle Park well field averaged 5 per week including weekends (Main Report, page 19-9). This was for one well, not for six wells

at each location. Infrastructure construction will include temporary camp sites with demountables, lighting and signage. All this will generate noise, disturb or displace colonies of native birds and animals, and possibly adversely affect aboriginal and European heritage in the area.

We consider that none of this should be happening in this area zoned Environmental Protection (Scenic). The Main Report (pages 17-12 and 16-5) suggests that well location VV07 might be visible from our Monastery, and well locations RA03 and RA09 might be visible from historic Varro Ville House.

4. Preliminary Hazard Analysis

In view of our concerns about the Northern Expansion of the Camden Gas Project, we studied the Preliminary Hazard Analysis prepared by Planager Pty Ltd (Appendix D) with particular care. The poor quality of this report gave us no reassurance whatsoever, and failed to inspire confidence in the Analysis itself.

The Preliminary Hazard Analysis gives no site-specific information. Indeed, there is no evidence that the author has even visited the Project Area. The text of the report reads like a preliminary draft; it is full of typographical errors (pages 17-18, 29 and passim), Figures 2-4 are illegible, the lists of Figures and Tables are not numbered consecutively and do not match the text, and Appendix 4, which is referred to twice in the text (pages 37 and 40) does not exist. We wonder whether the depiction of wellhead 1 in Figure 8 (Calculation of Domino Effect Factor, page 41) is correct. The text is peppered with vague statements such as ‘a leak may continue *for a considerable amount of time*’ (italics mine) before it is isolated’ (page 33). There is no discussion following the Results section, and most of the Conclusion (page 45) merely repeats an earlier section (page 25).

In addition, the Analysis seems to us to be unduly limited. Insufficient detail is given about the potential hazards of locating six wells close together, particularly in residential areas and areas of sensitive land use. The possibility of bushfires or grass fires in the Upper Surface Project Area has not been considered, and these do occur on occasions when vandals burn stolen cars at night in secluded parts of the locality. The potential for a well location to be damaged in the unlikely event of a light plane crash (since the area is over-flown daily by flights from Camden Airport) has been overlooked. No hazard analysis has been provided for in-field compression of gas, yet in-field compression is likely to be needed to enable gas to reach Rosalind Park Gas Plant from the most northerly part of the Surface Project Area (Main Report, page 4-11). Although the need for in-field compression may not arise for some two to five years from Project commencement, it is necessary for those of us likely to be affected by it to know at this stage what hazards it might pose.

Finally, we note that each revision of this document has been written and authorised by the same person. There appears to have been no peer review, no oversight and no accountability during the preparation of the Preliminary Hazard Analysis. We consider this to be unsatisfactory and unacceptable. A further revision needs to be prepared, peer reviewed and made available for public consultation as a pre-condition for determination of the Project.

5. Future modifications and approvals

In addition to the issues discussed above, we wish to express our concern about AGL's transparency in relation to the proposed Northern Expansion of the Camden Gas Project. The size of the Project seems to be consistently downplayed by the mention of twelve (12) well surface locations, instead of accurately describing the worst case scenario of seventy-two (72) wells in the Surface Project Area. Passing comments are made about the possibility of future modifications to the Project requiring additional approval, and we note the history of many modifications of the Camden Gas Project to date (Main Report, pages 1-2 to 1-4). Stage 1 of the Camden Gas Project initially comprised 22 wells. Stage 2 initially comprised 43 wells, yet subsequent approvals listed in Table 1-1 (Main Report, page 1-2 to 1-4) imply that approval was eventually obtained for up to 184 wells. In addition, approval was granted for other major structural developments such as inclusion of additional land that was omitted from the development consent, construction of a dam, and construction and relocation of access roads.

We already know that in-field compression is anticipated as a likely future development (Main Report, page 4-11). Can we be confident that approval for a gas plant in the Upper Surface Area of the Northern Expansion will not be sought by AGL in the future?

We wonder what subsequent developments might occur in the Scenic Hills if initial approval for this Project is granted. Given all the concerns we have raised, and others relating to ecology, impact on biodiversity and air quality (not mentioned in this present submission), we consider it reasonable to request that a moratorium be placed on the proposed Northern Expansion of the Camden Gas Project until these issues have been addressed in writing by AGL.

A handwritten signature in blue ink that reads "Jocelyn Kramer". The signature is written in a cursive, flowing style.

Sister Jocelyn Kramer OCD PhD

On behalf of the Carmelite Nuns, Varroville
Tel: 02 9820 3048

13 December 2010

Mr Clay Preshaw
NSW Department of Planning
23 . 33 Bridge Street
Sydney NSW 2000

By email: clay.preshaw@planning.nsw.gov.au

Dear Mr Preshaw

I am writing in relation to the recent public exhibition process for the northern expansion of the Camden Gas Project by AGL Limited. I acknowledge that the exhibition period has closed, and I seek the Department's support for consideration of this late submission.

Dart West Developments is developing two projects in the Turner Road precinct of the South West Growth Centre. The first of these, Central Hills Business Park, is both owned and being developed by Dart West. The second, Gregory Hills, is being developed by Dart West in partnership with the landowner, the Trustees of the Marist Brothers.

Both projects were rezoned in December 2007 and form part of the NSW Government's development program for the South West Growth Centre. Both projects are well underway, and over \$40m has been invested to date by Dart West. They are both long term projects and will be selling land over the next ten years.

AGL has identified one well (known as CU06) and a gas gathering line within the residential project Gregory Hills. While it is acknowledged that the final locations of the well and the gas gathering line have not yet been determined, Dart West would like to formally raise an objection to the location of CU06 within the residential zoned land. There is ample adjoining land, including land owned by the Marist Brothers, within very close proximity to the proposed CU06 well. The proposed location relative to the Gregory Hills masterplan is shown in the attached plan.

Even if AGL is able to demonstrate after DoP assessment that the wells are temporary and safe, Dart West believe it is poor planning to place a well on a site zoned for residential development. The existence of the well would force masterplanning to be altered and would compromise the sale process for land in the vicinity of the well.

Dart West is not aware of any insurmountable technical reason why this well could not be relocated outside the residential zoned land.

The proposed gas gathering pipeline appears to have been located without regard for the layout of Gregory Hills, as set out in the Department of Planning's Indicative Layout Plan for the Turner Road precinct. Instead, it appears to have been located on a now disused and significantly demolished private road. Should this pipeline still be required, Dart West seeks that it be delivered in a manner by AGL which is coordinated with the staged delivery of the Gregory Hills road network. Such delivery would need to be at no cost to Dart West and may involve relocation of the pipeline to accommodate the staged rollout of Gregory Hills. This would depend on the relative timeframes of the AGL and Gregory Hills projects.

Dart West has had preliminary discussions about AGL's proposal with AGL representatives over the last 12 - 18 months. However, the Department should be aware that no commercial arrangement has been negotiated and at no stage has the proposed well location or the route of the gas gathering pipeline been endorsed by either the Marist Brothers, as landowner, or Dart West as developer.

I trust this submission will be taken into account in the further assessment and design development of the AGL project. Should you require further information, I can be contacted on 4648 5511 or david.taylor@dartwest.com.au.

Yours sincerely

A handwritten signature in black ink, appearing to read 'D. Taylor'.

David Taylor
General Manager – Property



GREGORY HILLS MASTERPLAN



NARELLAN PROPERTIES

ABN 33 906 804 062

Mr Tony Mathew
HONORARY SECRETARY
PO Box 461x, Leumeah, NSW 2560

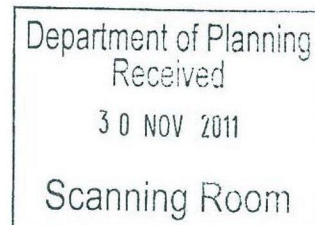


24 November 2011

The Director-General
Department of Planning and Infrastructure
GPO Box 39
Sydney NSW 2001

Attention: Mr Clay Preshaw

**Re: Camden Gas Project Stage 3 – Northern Expansion
Application Number 09- 0048**



Dear Sir,

We write in relation to the Camden Gas Project Stage 3 - Northern Expansion Project - Part 3A Major Project Application (Application Number 09_0048) currently under assessment by the Department of Planning and Infrastructure.

We are the owners of the Lot 1 DP1142394 being the Camden Lakeside Country Club at 50 Raby Road, Catherine Field.

We understand that the Major Project was publicly exhibited between October to December 2010 and AGL is currently reviewing the submissions and preparing a Submissions Report. However, we have only recently become aware of the proposal and we write to express concerns with the project.

The Project proposes one (1) surface well, Well Number CU20, in close proximity to the existing golf course (refer to Figure 1 below). Given the proximity of the well to the golf course, we are concerned with the potential for the well to be relocated onto the existing golf course land, potential ground water impacts and increased salinity risk as a result of the proposed gas project.

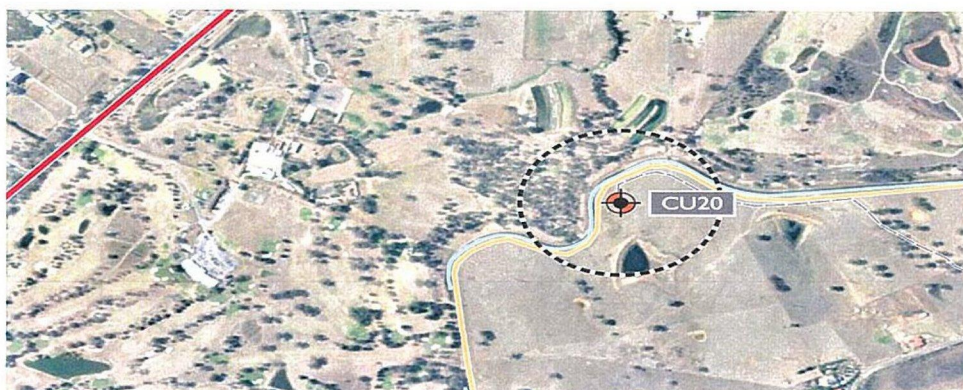


Figure 1: Location of CU20 (Source: Figure 5 of Camden Gas Project EA Report – Volume1 dated October 2010)

Location of Proposed Well

We note that the Environmental Assessment (EA) report prepared by AECOM identifies that well number CU20 is proposed to be located within the ECBG Development Area to the south of the Camden Lakeside landholdings (refer to Figure 3 below).

However, we noted that Section 4.3.1 ‘Siting and Development’ of the EA report identifies that:

“The final well surface locations may be adjusted within the assessment envelope during detailed design, based on consideration of the environmental and social constraints including land use (existing and future), topography, subsurface geology, flora and fauna, archaeological constraints, noise and visual impacts.”

We understand that the final well surface location may be up to some 200m from the location as shown in Figure 5 of the EA.

The land immediately to the north-east of the proposed well location, on the northern side of the Sydney Catchment Authority’s – Water Supply Canal is part of the Camden Lakeside Country Club Golf Course.

We are concerned that should the project progress and the well be relocated north east of the Sydney Catchment Authority’s – Water Supply Canal, the well has the potential to sterilise part of the golf course.

We also note that any relocation of the well north of the Sydney Catchment Authority’s – Water Supply Canal has the potential to affect the future redevelopment of part of the golf course as part of a golf course estate residential subdivision by SH Camden Lakeside Pty Limited.

Ground Water and Salinity Impacts

The EA report outlines the Project will result in movement changes to the ground water aquifers and a reduction in ground water quality.

We utilise water from existing dams, water from Riley’s Creek and underground water aquifers to service the golf course. The water quality of local aquifers are therefore an important to the health and quality of Rileys Creek and the health and quality of the golf course.

From our review it is unclear if the Project will result in a loss of water storage and water quality to the dams. Are there assurances that the continued use of underground water aquifers (to service the golf course) will not impact upon vegetation or result in land degradation?

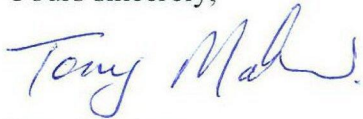
In regards to salinity, it is also unclear if the Project will result in increased salinity risk associated with the proposed hydro-fracturing and associated increased movement of groundwater.

We request assurances that the Project will not result in an increase salinity risk to our development.

In this respect we are opposed to the proposed Camden Gas Project and request that it be refused.

Should the project proceed, we request confirmation that well CU20 will not be relocated onto the northern side of the Sydney Water Catchment – Water Supply Canal.

Yours sincerely,



Tony Mathew
Honorary Secretary



Sydney
Level 2, 490 Crown St
Surry Hills NSW
2010 Australia
T 02 9380 9911
F 02 9380 9922

Melbourne
Level 1, Building D
80 Dorcas St
Southbank VIC
3006 Australia
T 03 8648 3500
F 03 8648 3599

sjb.com.au
planning@sjb.com.au

The Director-General
Department of Planning and Infrastructure
GPO Box 39
Sydney NSW 2001

Attention: Mr. Clay Preshaw

25 November 2011

**Re: Camden Gas Project Stage 3 – Northern Expansion Project
Application Number 09_0048**

Dear Sir,

We write in relation to the Camden Gas Project Stage 3 - Northern Expansion Project - Part 3A Major Project Application (Application Number 09_0048) currently under assessment by the Department of Planning and Infrastructure.

We act on behalf of SH Camden Lakeside Pty Limited (SH Camden Lakeside), the owners of the Lot 2 DP1142394, being part of the Camden Lakeside Country Club at 50A Raby Road, Catherine Field.

SH Camden Lakeside is currently in the process of redeveloping their land holdings as part of a master planned golf estate, that will accommodate some 333 dwellings set amongst 70 hectares of golf course. The first stages of residential subdivision development have been approved with construction on the first 15 dwellings due to commence early in 2012.

We understand that the Major Project was publicly exhibited between October to December 2010 and AGL is currently reviewing the submissions and preparing a Submissions Report. However, SH Camden Lakeside has only recently become aware of the proposal and we write on their behalf to express concerns with the project.

The Project proposes one (1) surface well close proximity of the SH Camden Lakeside landholding. The proximity of the well to the SH Camden Lakeside landholding and the future residential subdivision developments, raises the following key concerns and potential impacts:

- Land sterilisation
- Air quality
- Hazards, risks and leaks
- Ground water impacts and salinity risk
- Construction and operational noise, and vibration
- Public perception and impact on land values

The concerns are addressed in more detail in the attached submission.

SH Camden Lakeside is opposed to this Project proposal in its current form, however, we would be committed to working with AGL to resolve these concerns prior to an approval being granted.



We look forward to hearing from you as a matter of urgency. Please contact Oliver Roborgh at Sekisui House on 8817-4830 or Michael Baker on 9380-9911 or by email at mbaker@sjb.com.au.

Yours sincerely

A handwritten signature in black ink, appearing to read 'M. Baker'.

Michael Baker
Associate

Encl. The Hermitage, Concept Masterplan



1.0 SH Camden Lakeside Pty Limited Land Holdings

SH Camden Lakeside Pty Limited land holdings comprise the following land holdings:

Property	Address	Legal Description
Camden Lakeside Country Club	50A Raby Road, Catherine Field	Lot 2 DP1142394

The SH Camden Lakeside landholdings are identified in red in Figure 1 below.

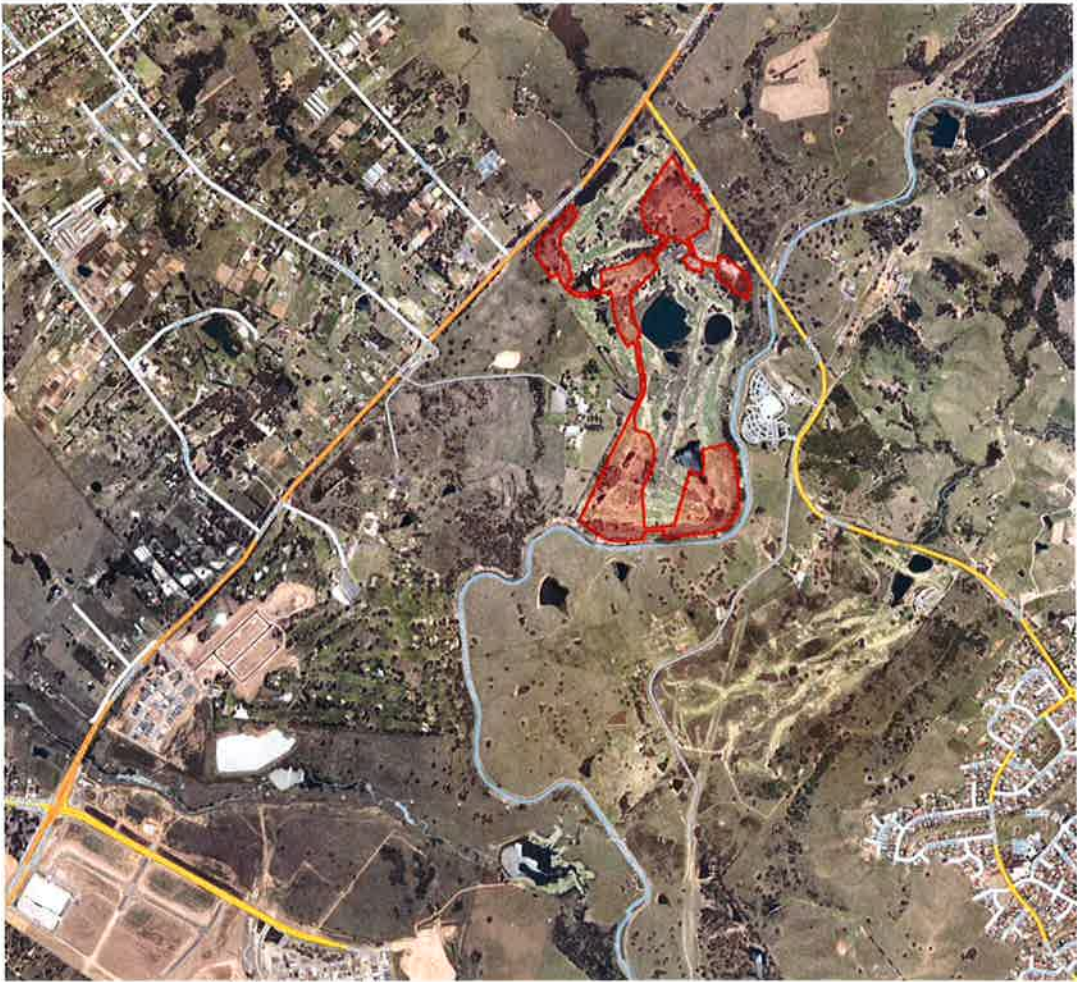


Figure 1: SH Camden Lakeside landholdings

2.0 Proposal

The Project includes:

- Approximately 20 well surface locations containing up to 6 wellheads each;
- A high pressure gas sales pipeline;
- Associated gas gathering and water lines, including interconnection with existing gas fields, along with central water storage points where required;
- Access roads and ancillary infrastructure, including storage yard(s), where required;
- Subsurface drilling of lateral well paths within the boundaries of the Subsurface Project Area.

The following proposed surface wells appear to be located within or adjoining the SH Camden Lakeside holdings (Figure 2):

- Surface well CU20. It appears this well will be located within the ECBG Development Area, on land currently zoned Environmental Protection (Scenic) under the current Camden LEP 48, and designated for Private Recreation under Draft Camden LEP 151 (pp. 8-5 of Environmental Assessment Report.)

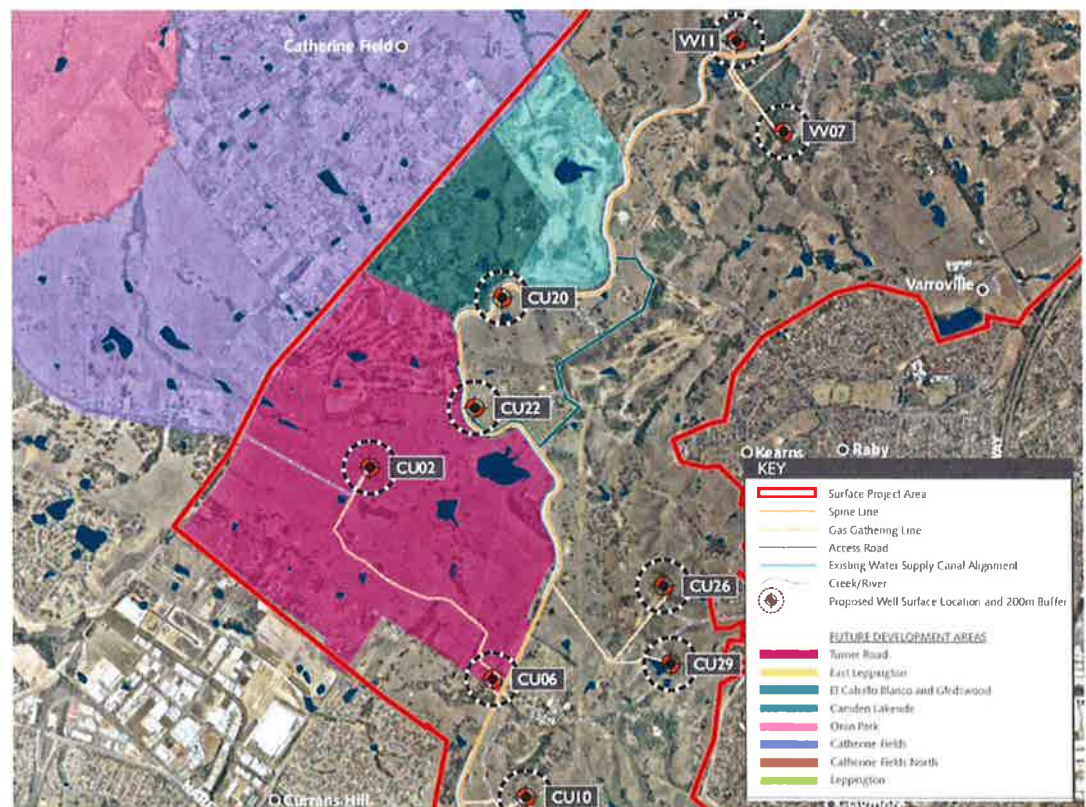


Figure 2: Location of wells and surface works

3.0 Potential Impacts

3.1 Final Well Locations and Land sterilisation

The Environmental Assessment (EA) report prepared by AECOM identifies that well number CU20 is proposed to be located within the ECBG Development Area to the south of the Camden Lakeside landholdings (refer to Figure 3 below).

However, we noted that Section 4.3.1 'Siting and Development' of the EA report identifies that:

"The final well surface locations may be adjusted within the assessment envelope during detailed design, based on consideration of the environmental and social constraints including land use (existing and future), topography, subsurface geology, flora and fauna, archaeological constraints, noise and visual impacts."

We understand from discussions with AGL that the final well surface location may be up to some 200m from the location as shown in Figure 5 of the EA (refer to Figure 3 below).



Figure 3: Location of CU20 (Source: Figure 5 of Camden Gas Project EA Report – Volume1 dated October 2010)

The land immediately to the north-east of the proposed well location, on the north-eastern side of the Sydney Catchment Authority's – Water Supply Canal is owned by SH Camden Lakeside and is zoned residential. SH Camden Lakeside proposes to develop this part of the site as part of a golf course estate development.

It is understood that the final well location could potentially be anywhere within this 200m radius and as such may be relocated on Camden Lakeside landholdings within the area of the future residential subdivision.

We are concerned that should the project progress and the well be relocated north east of the Sydney Catchment Authority's – Water Supply Canal, the well has the potential to sterilise part of the SH Camden Lakeside land holdings. Any relocation of the well north of the Sydney Catchment Authority's – Water Supply Canal has the potential to affect the future residential subdivision of this land.



In this regard, SH Camden Lakeside requests confirmation that, should the project progress, that well CU20 is not located on the northern side of the Sydney Catchment Authority's – Water Supply Canal.

3.2 Air Quality

The EA report outlines the project will result in the following emissions:

- Coal Seam Methane (CSM) gas from leakages during drilling of construction wells
- Gas vented following well shut in periods
- Odour (if oxygenation of aquifer waters occurs)
- Dust generation during use of unsealed roads

We note the air quality assessment is based upon existing residential receivers, and does not take into consideration the potential impact of gas venting upon future occupants within our land holdings.

From our review the 'immediate tie-in to the gas gathering system' is a type of mitigation measure *'that may significantly limit or even remove the need for gas venting'*. However it is unclear from the EA report if this will be undertaken for well CU020 located in the vicinity of our land holdings.

Accordingly, we request that the air quality assessment be updated to reflect the location of future residents within our landholdings (refer to masterplan attached). Further, it is requested that, if the project progresses, surface well CU020 be immediately tied-in to the gas gathering system during (well) commissioning to ensure gas venting events do not occur.

In regards to odour, we note the EA report does not accurately quantify, or assess the potential odour impacts originating from the Project. Further, there are no environmental mitigation measures relating to odour impacts in the Environmental Safeguard commitments outlined in Section 14.4 of the EA Report.

Given the proximity of the surface wells to our future residential areas, we request an odour assessment be undertaken and mitigation measures, which result in zero impact on our development be determined and implemented.

In regards to dust generation, we note well CU020 would require the construction of new access roads. It is not clear of the type of road to be constructed or the type of earthworks proposed. It is assumed these new access roads will require re-grading of the land and will be unsealed.

Although mitigation measures have been identified which would minimise dust impacts during the commissioning of any surface wells, there are no measures identified which would mitigate dust impacts during operation. Considering there will be no personnel during the operation of the well, the lack of maintenance and management of the new unsealed roads will potentially create unacceptable impacts upon future residents during high wind events.

We request that any access roads be sealed to ensure dust generation is minimised.

3.3 Hazards, Risks and Leaks

The predominant source of hazard is the potential leak of Coal Seam Methane (CSM). This will have the potential to cause injury or damage if there was ignition, resulting in a fire or explosion incident. These leaks could occur during routine operation, during equipment maintenance or work over operations.



Based on the Preliminary Hazard Analysis we understand the minimum distance required to minimise the probability of a fatality is 20 metres from the surface well, and 5 metres from the gas gathering lines. Considering the proposed wells could be located anywhere within the stated buffer zones, there is a probability that surface well CU020 could be unreasonably located in proximity to our land holdings. This could have the result in sterilising redevelopment of our landholdings, or placing future residents at risk.

It is also unclear if this analysis took into account the future residents within our land holdings, or the hazards and risks following the decommissioning of the wells/gas gathering lines that will remain in-situ.

3.4 Ground Water Impacts and Salinity Risk

The EA report outlines the Project will result in movement changes to the ground water aquifers and a reduction in ground water quality.

The owners of the golf course currently utilise water from existing dams, water from Riley's Creek and underground water aquifers to service the golf course. Future redevelopment of the landholdings will include additional golf and therefore an increased reliance on surface and ground water as a natural resource.

The water quality of local aquifers, water within Riley's Creek and dams on site are therefore an important part of the SH Camden Lakeside landholdings, in terms of the health of riparian corridors across their land holdings and the future redevelopment around a healthy and quality golf course.

From our review it is unclear if the Project will result in a reduction in volume or quality of both surface and ground water. SH Camden lakeside requests that this issue is addressed further and the true impact on our proposed development determined. It is not unreasonable to request assurance that the Project would result in zero impact on this most precious natural resource.

In regards to salinity, it is also unclear if the Project will result in increased construction costs to our development given the increased salinity risk associated with the proposed hydro-fracturing and associated increased movement of groundwater.

We request assurances that the Project will not result in an increased salinity risk to our development.

3.5 Construction and Operational Noise, and Vibration

The EA report outlines the project will result in the following noise and vibration impacts:

- Construction noise impacts from access to and drilling of the gas wells
- Construction noise and vibration impacts of installation of the gas gathering systems
- Noise impacts of the operation of the gas wells

We note the noise and vibration assessment is based upon existing residential receivers, and does not take into consideration the potential impact upon future residents.

Although it is acknowledged that noise mitigation is required for the proposed surface well *CU020* it is unclear what noise mitigation measures are proposed and if they would be adequate to ensure zero impact on the residents of our development. Further noise mitigation measures may be required within our development, unreasonably increasing construction costs and thereby impacting the feasible redevelopment of the landholdings.



Accordingly, we request that the noise and vibration assessment be updated to include an assessment of the future residents, and to clearly set out what mitigation measures would be necessary to achieve the noise criterion.

3.6 Public Perception and Impact on Land Values

The overriding key concerns of SH Camden Lakeside is that the proposed gas project has the potential to jeopardise the redevelopment of their land holdings due to public perception of the proposed gas project. The resulting impact on future sales of residential lots is a very real concern and has the potential to directly reduce the value of our landholdings.

The public perception of the gas project has the potential to have a significant impact on future residential subdivisions of the SH Camden Lakeside landholdings. The mining of gas within an urban release precinct cannot be interest of the NSW Government, if it is likely to affect public perception and land values.

4.0 Conclusion

SH Camden Lakeside is opposed to this project proposal in its current form. However, we would be committed to working with AGL to resolve these concerns prior to an approval being granted

The primary concerns relating to the Camden Gas Project relate to the lack of assessment against the future redevelopment of SH Camden Lakeside landholdings, and in particular future residents.

The location of the surface wells, and the associated air, noise, water and hazards have the potential to sterilise the redevelopment of SH Camden Lakeside landholdings, and impact upon the future delivery of housing to the locality and subsurface water supply.

We request additional assessment be undertaken with specific regard to our proposed development (refer appended master plan) to ensure that, if the Project progressed, there would be zero impact on future residents and businesses within our landholdings.

The negative public perception of the proposed Project is highly likely to negatively impact future sales thereby reducing the value of SH Camden Lakeside land holdings. This would impact upon the future delivery of housing to the locality which is an important part of the future supply of housing to the southwest and the overall Sydney Metropolitan region.

We request confirmation that, should the project proceed, that well CU20 is not relocated onto the northern side of the Sydney Catchment Authority – Water Supply Canal on SH Camden Lakeside land.

KEY INFORMATION

	The Hermitage	El Caballo Blanco	Lakeside	Total
Dwellings	1226	222	333	1781
Dwellings per NDA* (yields) hectare	15	12.5	11	
Land Area (Gross)	135.7 ha	77.1 ha	34.4 ha	247.2 ha
Land Area (Net) – Residential Zones	58.5 ha	13.3 ha	24.0 ha	95.8 ha
Land Area (Net) – Business Zones	5.5 ha			5.5 ha
Open Space/ Drainage	15.6 ha	1.5 ha	1.4 ha	18.5 ha
Satoyama	8.6 ha			
Riparian Corridors	17.0 ha	5.5 ha		22.5 ha
South Creek	17.0 ha			
Rileys Creek		5.5 ha		
Roads	32.3 ha	8.4 ha	9.2 ha	49.8 ha

*NDA is Net Developable Area for residential land is defined as:

"The land occupied by development, including internal streets plus half the width of any adjoining access roads that provide vehicular access, but excluding public open space and other non-residential land."

Source: Growth Centres Development Code (October 2005)



SJB Planning



Sydney
Level 2, 490 Crown St
Surry Hills NSW
2010 Australia
T 02 9380 9911
F 02 9380 9922

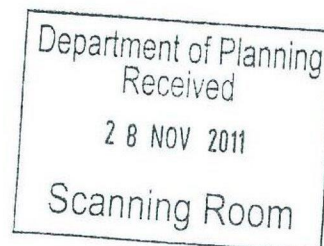
Melbourne
Level 1, Building D
80 Dorcas St
Southbank VIC
3006 Australia
T 03 8648 3500
F 03 8648 3599

sjb.com.au
planning@sjb.com.au

The Director-General
Department of Planning and Infrastructure
GPO Box 39
Sydney NSW 2001

Attention: Mr. Clay Preshaw

25 November 2011



**Re: Camden Gas Project Stage 3 - Northern Expansion Project
Application Number 09_0048**

Dear Sir,

We write in relation to the Camden Gas Project Stage 3 - Northern Expansion Project - Part 3A Major Project Application (Application Number 09_0048) currently under assessment by the Department of Planning and Infrastructure.

We act on behalf of SH Camden Valley Pty Limited (SH Camden Valley), the owners of the Camden Valley Golf Resort and former El Caballo Blanco tourist park at 650 to 880 Camden Valley Way, Catherine Field.

SH Camden Valley is currently in the process of redeveloping their land holdings as part of a master planned residential community referred to as The Hermitage. The Hermitage will offer some 1,800 home sites set amongst 120 hectares of golf course. The first stages of residential subdivision development have commenced on the site, with consent granted for approximately 265 lots and on which approximately 50 houses are either under construction or nearing completion.

We understand that the Major Project was publicly exhibited between October to December 2010 and AGL is currently reviewing the submissions and preparing a Submissions Report. However, SH Camden Valley has only recently become aware of the proposal and we write on their behalf to express concerns with the project.

The Project proposes three (3) surface wells within or in the immediate vicinity of the SH Camden Valley landholdings. The proximity of the three surface wells to the SH Camden Valley landholdings and the proposed and approved residential subdivision developments, raises the following key concerns and potential impacts:

- Land sterilisation
- Air quality
- Hazards, risks and leaks
- Ground water impacts and salinity risk
- Construction and operational noise, and vibration
- Public perception and impact on land values

The concerns are addressed in more detail in the attached submission.

SH Camden Valley is opposed to this Project proposal in its current form, however, we would be committed to working with AGL to resolve these concerns prior to an approval being granted.



We look forward to hearing from you as a matter of urgency. Please contact Oliver Roborgh at Sekisui House on 8817 4830 or Michael Baker on 9380 9911 or by email at mbaker@sjb.com.au.

Yours sincerely

A handwritten signature in black ink, appearing to read 'M. Baker', with a stylized flourish at the end.

Michael Baker
Associate

Encl. The Hermitage, Concept Masterplan



1.0 SH Camden Valley Pty Limited Land Holdings

SH Camden Valley Pty Limited land holdings comprise the following land holdings:

Property	Address	Legal Description
Camden Valley Golf Resort	650-810 Camden Valley Way, Catherine Field	Lot 100 DP1154120 Lot 1 DP 547127 Lot 3 DP 619850 Lot 701 DP1154772
Former El Caballo Blanco Tourist Park	880 Camden Valley Way Catherine Field	Lot 10 DP 1086849

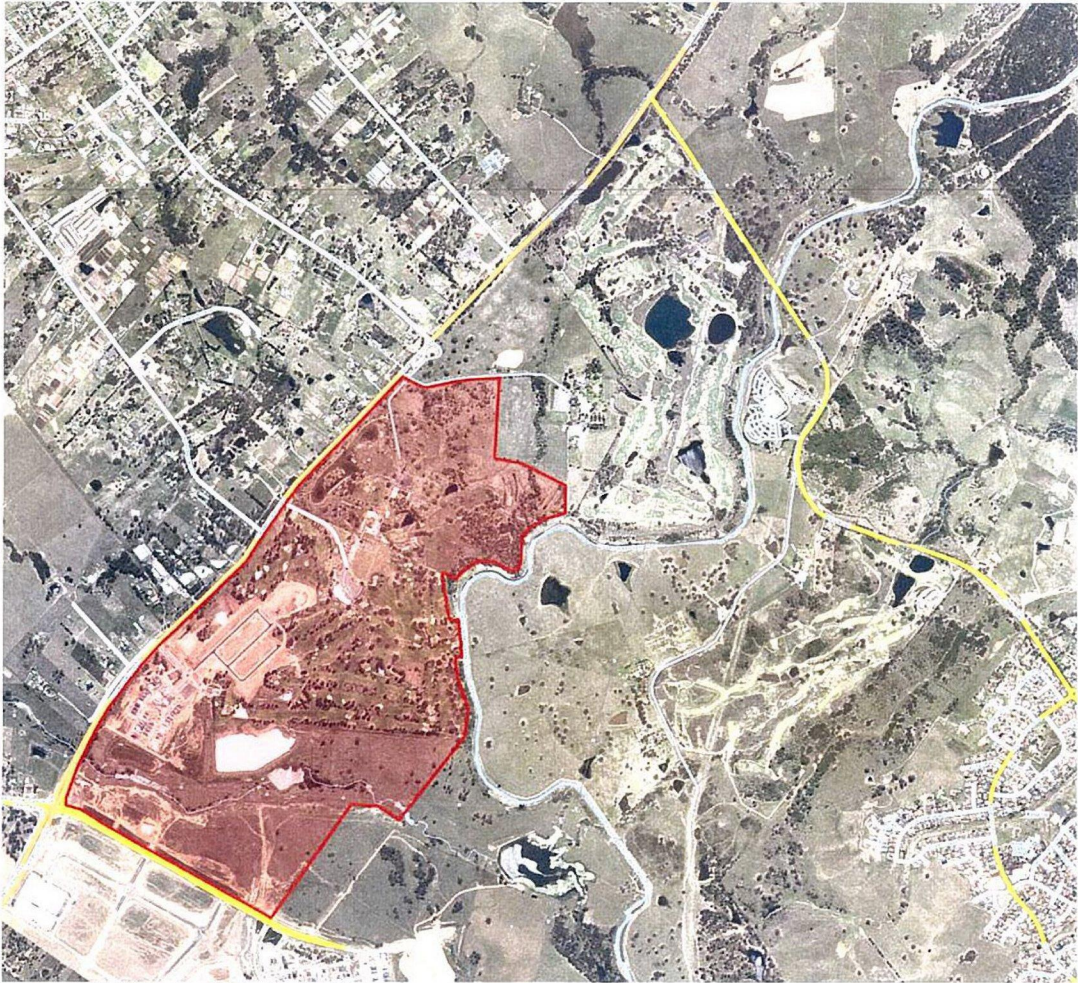


Figure 1: SH Camden Valley landholdings

2.0 Proposal

The Project includes:

- Approximately 20 well surface locations containing up to 6 wellheads each;
- A high pressure gas sales pipeline;
- Associated gas gathering and water lines, including interconnection with existing gas fields, along with central water storage points where required;
- Access roads and ancillary infrastructure, including storage yard(s), where required;
- Subsurface drilling of lateral well paths within the boundaries of the Subsurface Project Area.

The following proposed surface wells appear to be located within, or adjoining the SH Camden Valley holdings (Figure 2):

- Surface wells CU02. It appears this surface well would utilise future open space areas within Turner Road (pp8-4 of Environmental Assessment Report.)
- Surface well CU20 & CU22. It appears these wells will be located within the ECBG Development Area, on land currently zoned Environmental Protection (Scenic) under the current Camden LEP 48, and designated for Private Recreation under Draft Camden LEP 151 (pp 8-5 of Environmental Assessment Report.)

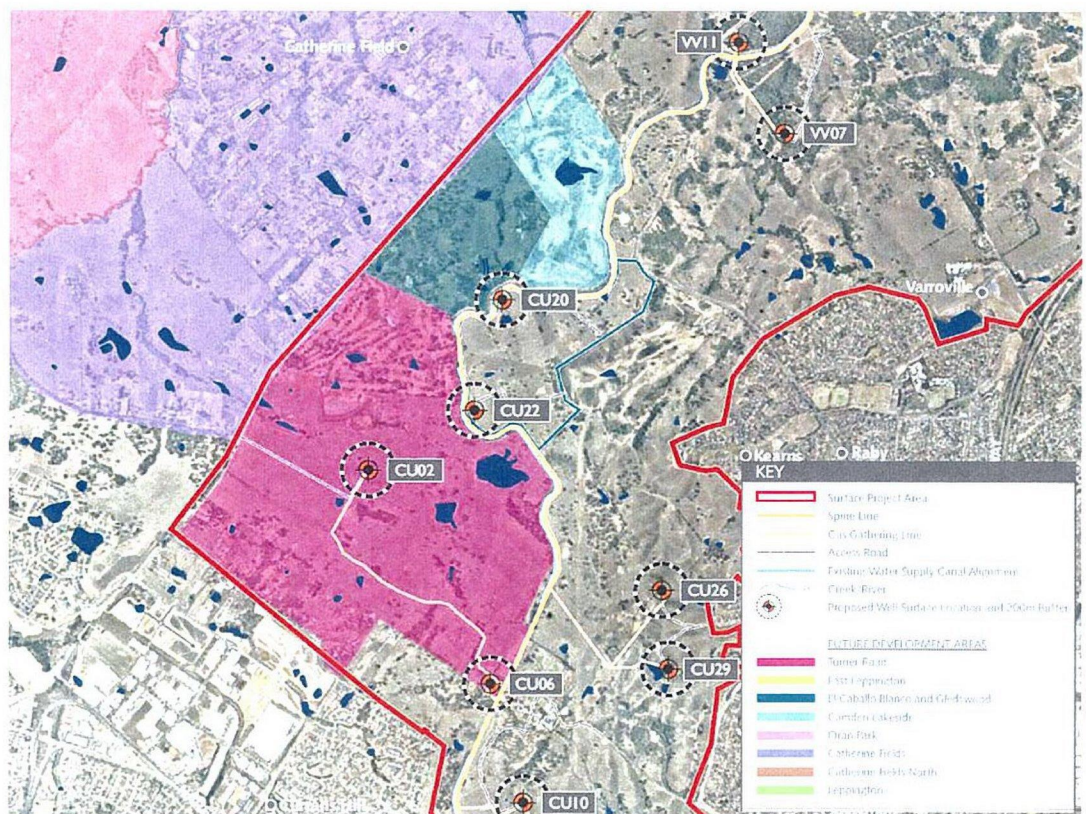


Figure 2: Location of wells and surface works

3.0 Potential Impacts

3.1 Final Well Locations and Land sterilisation

Well CU02

The Environmental Assessment (EA) report prepared by AECOM identifies that well number CU02 is proposed to utilise future open space areas within Turner Road.

However, we noted that Section 4.3.1 'Siting and Development' of the EA report identifies that:

"The final well surface locations may be adjusted within the assessment envelope during detailed design, based on consideration of the environmental and social constraints including land use (existing and future), topography, subsurface geology, flora and fauna, archaeological constraints, noise and visual impacts."

We understand from discussions with AGL that the final well surface location may be up to some 200m from the location as shown in Figure 5 of the EA (refer to Figure 3 below).

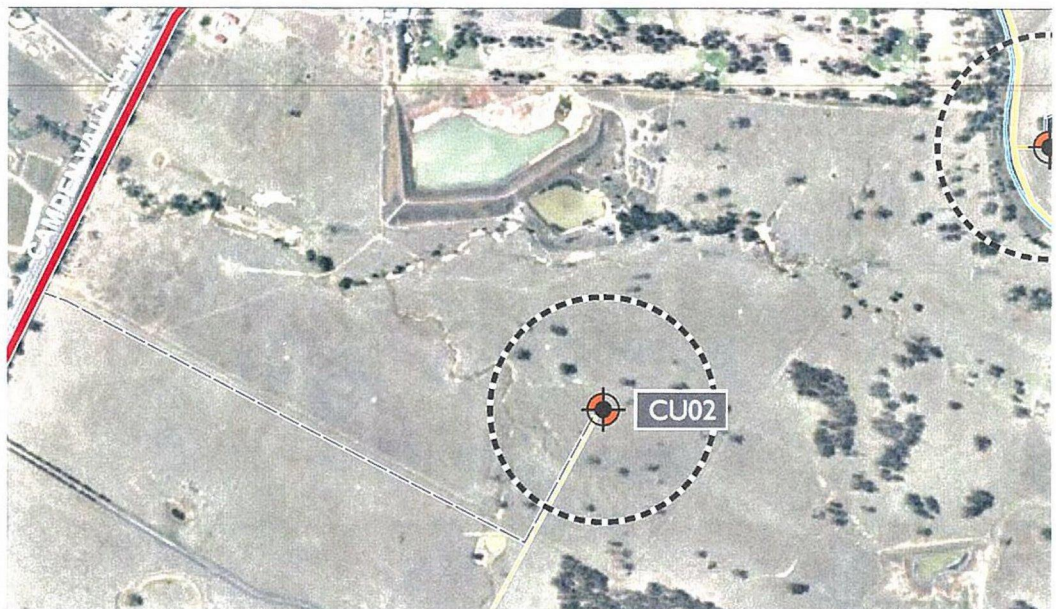


Figure 3: Location of CU02 (Source: Figure 5 of Camden Gas Project EA Report – Volume1 dated October 2010)

From our review of the location of well CU02 as identified within the EA report, this well appears to be located in close proximity to the future alignment of the North Spine Road as identified in the Turner Road DCP or alternatively within the B5 Business Development zoned portion of the land.

We are concerned that the proposed well location has the potential to sterilise this part of the site, affect future subdivision of this land and most importantly affect the alignment of the North Spine Road.

Well CU22

The Well Surface Location of Well CU22 is currently located on the eastern side of the Sydney Catchment Authority's – Water Supply Canal, outside of the SH Camden Valley land holdings as shown in Figure 4 below.



Figure 4: Location of CU22 (Source: Figure 5 of Camden Gas Project EA Report – Volume1 dated October 2010)

However, it is noted that the 200m well buffer or assessment envelope projects across the Sydney Catchment Authority's – Water Supply Canal across part of the SH Camden Valley land holdings. This part of SH Camden Valley's land holdings is zoned residential and is the subject of a residential subdivision DA currently with Camden Council awaiting determination.

It is understood that the final well location could potentially be anywhere within this 200m radius and as such may be relocated on SH Camden Valley landholdings and within the area of the proposed residential subdivision. SH Camden Valley received a verbal confirmation from Mr Adam Lollback in a meeting held 17 November 2011 at AGL offices that if the project proceeded, well CU22 would remain on the eastern side of the Sydney Catchment Authority – Water Supply Canal.

We kindly request confirmation of this advice in writing.

Well CU20

Well CU20 is shown in Figure 5 of the EA to be located on the eastern side of the Sydney Catchment Authority's – Water Supply Canal (refer to excerpt in Figure 5 below), close to the eastern boundary of SH Camden Valley's land holdings. However, the 200m buffer extends into SH Camden Valley landholdings and as such the final location of this well may potentially be on the western side of the canal and therefore on SH Camden Valley land.

We understand that AGL has been advised by neighbouring landowners that this area of the SH Camden Valley landholdings is undevelopable and therefore may be more suitable for the proposed well. As can be seen from the appended master plan this is not the case. SH Camden Valley are proposing residential development immediately adjacent to the riparian corridor which abuts the Sydney Catchment Authority Canal. Furthermore this riparian corridor surrounds Riley's Creek and is classified as a Category 1 Watercourse as defined by the Office of Environment and

Heritage (formerly DECCW) and it is understood that AGL are not permitted to locate any surface wells within 40m of top of bank.

In this regard SH Camden Valley requests confirmation that, should the project progress, well CU20 would not be located on the western side of Sydney Catchment Authority's – Water Supply Canal.

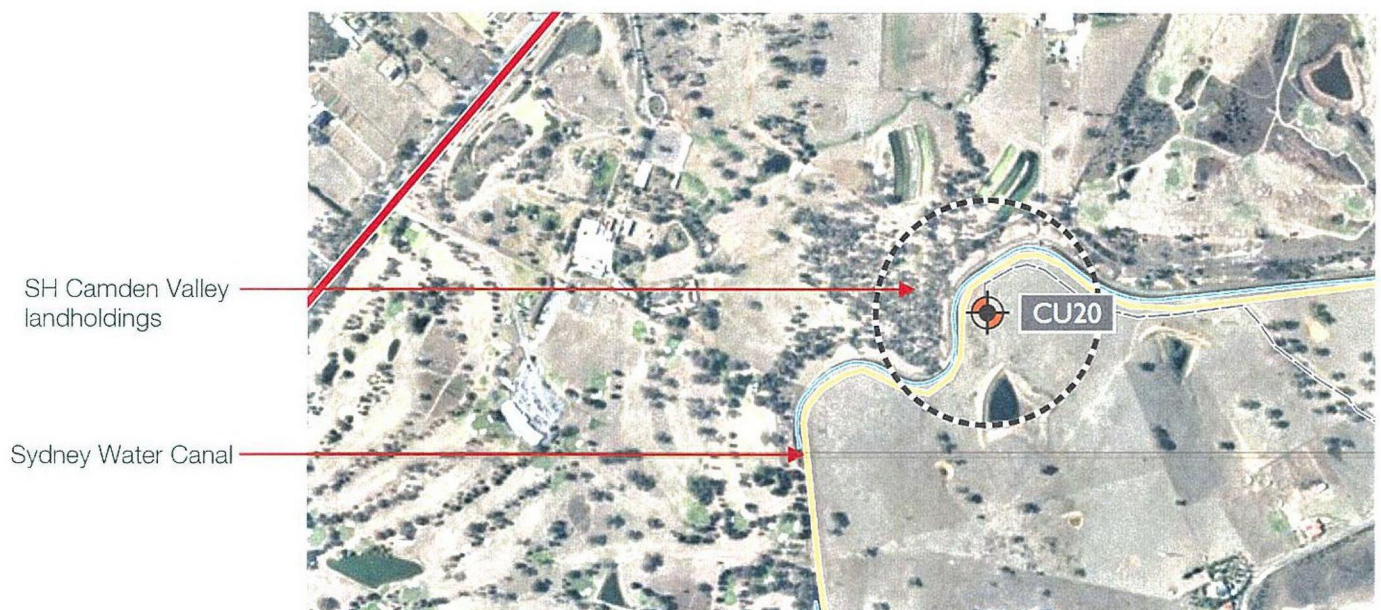


Figure 5: Location of CU20 (Source: Figure 5 of Camden Gas Project EA Report – Volume1 dated October 2010)

3.2 Air Quality

The EA report outlines the project will result in the following emissions:

- Coal Seam Methane (CSM) gas from leakages during drilling of construction wells
- Gas vented following well shut in periods
- Odour (if oxygenation of aquifer waters occurs)
- Dust generation during use of unsealed roads

We note the air quality assessment is based upon existing residential receivers, and does not take into consideration the potential impact of gas venting upon future occupants within our land holdings.

From our review the 'immediate tie-in to the gas gathering system' is a type of mitigation measure *'that may significantly limit or even remove the need for gas venting'*. However it is unclear from the EA report if this will be undertaken for wells CU02, CU020 and CU022 located in the vicinity of our land holdings.

Accordingly, we request that the air quality assessment be updated to reflect the location of future residents within our landholdings (refer to master plan attached). Further, it is requested that, if the project progresses, surface wells CU02, CU020 and CU022 be immediately tied-in to the gas gathering system during (well) commissioning to ensure gas venting events do not occur.

In regards to odour, we note the EA report does not accurately quantify, or assess the potential odour impacts originating from the Project. Further, there are no environmental mitigation



measures relating to odour impacts in the Environmental Safeguard commitments outlined in Section 14.4 of the EA Report.

Given the proximity of the surface wells to our future residential and employment areas, we request an odour assessment be undertaken and mitigation measures, which would result in zero impact on our development, be determined.

In regards to dust generation, we note wells CU02, CU020 and CU022 would require the construction of new access roads. It is not clear of the type of road to be constructed or the type of earthworks proposed. It is assumed these new access roads will require re-grading of the land and will be unsealed.

Although mitigation measures have been identified which would minimise dust impacts during the commissioning of any surface wells, there are no measures identified which would mitigate dust impacts during operation. Considering there will be no personnel during the operation of the well, the lack of maintenance and management of the new unsealed roads will potentially create unacceptable impacts upon future residents during high wind events.

We request that any access roads be sealed to ensure dust generation is minimised.

3.3 Hazards, Risks and Leaks

The predominant source of hazard is the potential leak of Coal Seam Methane (CSM). This will have the potential to cause injury or damage if there was ignition, resulting in a fire or explosion incident. These leaks could occur during routine operation, during equipment maintenance or work over operations.

Based on the Preliminary Hazard Analysis we understand the minimum distance required to minimise the probability of a fatality is 20 metres from the surface well, and 5 metres from the gas gathering lines. Considering the proposed wells could be located anywhere within the stated buffer zones, there is a probability that surface wells CU02, CU020 and CU022 could be unreasonably located in proximity to our land holdings. This could have the result in sterilising redevelopment of our landholdings, or placing future residents at risk.

It is also unclear if this analysis took into account the future residents within our land holdings, or the hazards and risks following the decommissioning of the wells/gas gathering lines that will remain in-situ.

3.4 Ground Water Impacts and Salinity Risk

The EA report outlines the Project will result in movement changes to the ground water aquifers and a reduction in ground water quality.

SH Camden Valley currently utilises existing water dams, water from South Creek and underground water aquifers to service the golf course. Future redevelopment of the landholdings will include additional golf and therefore an increased reliance on surface and ground water as a natural resource.

From our review it is unclear if the Project will result in a reduction in volume or quality of both surface and ground water. SH requests that this issue is addressed further and the true impact on our proposed development determined. It is not unreasonable to request assurance that the Project would result in zero impact on this most precious natural resource.



In regards to salinity, it is also unclear if the Project will result in increased construction costs to our development given the increased salinity risk associated with the proposed hydro-fracturing and associated increased movement of groundwater.

We request assurances that the Project will not result in an increased salinity risk to our development.

3.5 Construction and Operational Noise, and Vibration

The EA report outlines the project will result in the following noise and vibration impacts:

- Construction noise impacts from access to and drilling of the gas wells
- Construction noise and vibration impacts of installation of the gas gathering systems
- Noise impacts of the operation of the gas wells

We note the noise and vibration assessment is based upon existing residential receivers, and does not take into consideration the potential impact upon future residents.

Although it is acknowledged that noise mitigation is required for the proposed surface wells *CU02*, *CU020* and *CU022*, it is unclear what noise mitigation measures are proposed and if they would be adequate to ensure zero impact on the residents of our development. Further noise mitigation measures may be required within our development, unreasonably increasing construction costs, and thereby impacting the feasible redevelopment of the landholdings.

Accordingly, we request that the noise and vibration assessment be updated to include an assessment of the future residents, and to clearly set out what mitigation measures would be necessary to achieve the noise criterion.

3.6 Public Perception and Impact on Land Values

The overriding key concern of SH Camden Valley is that the proposed gas project has the potential to jeopardise the redevelopment of their land holdings due to negative public perception of the proposed gas project. The resulting impact on future sales of residential lots is a very real concern and has the potential to directly reduce the value of SH Camden Valley land holdings.

The SH Camden Valley land holdings are located within the Turner Road Precinct of Sydney's South West Growth Centre. In 2005, the NSW Government identified the Growth Centres as the home for new communities to accommodate 500,000 people over the next 30 years to address Sydney's chronic undersupply of housing.

The public perception of the gas project has the potential to have a significant impact on both the approved and future residential subdivisions of the SH Camden Valley landholdings. The mining of gas within the South West Growth Centres precincts cannot be in the interest of the NSW, if it is likely to affect public perception and land values.



4.0 Conclusion

SH Camden Valley is opposed to this project proposal in its current form. However, we would be committed to working with AGL to resolve these concerns prior to an approval being granted.

The primary concerns relating to the Project relate to the lack of assessment against the future redevelopment of SH Camden Valley landholdings, and in particular future residents.

We request additional assessment be undertaken with specific regard to our proposed development (refer appended master plan) to ensure that, if the Project progressed, there would be zero impact on future residents and businesses within our landholdings.

The negative public perception of the proposed Project is highly likely to negatively impact future sales thereby reducing the value of SH Camden Valley land holdings. This would impact upon the future delivery of housing to the locality which is an important part of the future supply of housing to the southwest growth area and the overall Sydney Metropolitan region.

Furthermore, we request confirmation that, should the project proceed, that wells CU20 and CU22 would not be relocated onto the western side of the Sydney Catchment Authority – Water Supply Canal.

KEY INFORMATION

	The Hermitage	El Caballo Blanco	Lakeside	Total
Dwellings	1226	222	333	1781
Dwellings per NDA* (yields) hectare	15	12.5	11	
Land Area (Gross)	135.7 ha	77.1 ha	34.4 ha	247.2 ha
Land Area (Net) – Residential Zones	58.5 ha	13.3 ha	24.0 ha	95.8 ha
Land Area (Net) – Business Zones	5.5 ha			5.5 ha
Open Space/ Drainage	15.6 ha	1.5 ha	1.4 ha	18.5 ha
Satoyama	8.6 ha			
Riparian Corridors	17.0 ha	5.5 ha		22.5 ha
South Creek	17.0 ha			
Rileys Creek		5.5 ha		
Roads	32.3 ha	8.4 ha	9.2 ha	49.8 ha

*NDA is Net Developable Area for residential land is defined as:

"The land occupied by development, including internal streets plus half the width of any adjoining access roads that provide vehicular access, but excluding public open space and other non-residential land."

Source: Growth Centres Development Code (October 2008)





24th January 2011

Mr. Clay Preshaw
Major Projects Assessment
NSW Department of Planning
GPO Box 39
SYDNEY NSW 2001

Re: Submission on Camden Gas Project Stage 3 (Northern Expansion)

Dear Mr Preshaw:

Please find attached, the submission from the Scenic Hills Association (SHA) on the project application and Environmental Assessment of AGL Energy Limited (AGL) for its proposed Camden Gas Project Stage 3 (Northern Expansion).

Yours sincerely

Jacqui Kirkby
0411 873 999

Greg Burke
0421 158 067

Barry Moore
0419 693 952

Cc. Mayor Paul Lake (Campbelltown City Council)
Andrew McDonald MP
Cate Faehrmann MLC
Brad Hazzard, MP

Updated February 4th, 2011 to correct error on page 7, point 2.2.4, last sentence, which now reads: "There are currently no known Aboriginal 'Places' within the Surface Project Area." A reference has been added to page 11, point 2.3.6: Appendix E, page 2.

SUBMISSION ON CAMDEN GAS PROJECT STAGE 3 (NORTHERN EXPANSION) FROM THE SCENIC HILLS ASSOCIATION

Thank you for granting our request for an extension of time to submit on this project.

In our letter of November 15th 2010 (requesting that extension), we expressed the view that the proximity of the public exhibition of AGL's Environmental Assessment (EA) for this project so close to year end (an extremely busy period, especially for those of our members engaged in religious activities), and the time given to respond, would mean that any response we could give before end of February would be severely limited by our ability to research and engage the professional expertise we felt we needed to make a quality response to such a large, complicated and technical document.

In that letter we also expressed the concern that the timing of the public exhibition (in the busy pre-Christmas period) and the decision to reach a project determination by the end of February (prior to the NSW elections, after which the legislation under which this is being decided is likely to be removed) did not encourage community confidence in the processes of government, particularly in light of the problems with coal seam gas (CSG) mining currently being identified by a large and growing number of groups, individuals and organisations across Australia and overseas.

Notwithstanding the limitations, we have reviewed key documents and sought preliminary advice on areas of key concern. We hope that the NSW Department of Planning (DoP) will, when considering the issues raised by us, give careful consideration to re-dressing the apparent imbalance evident in the relative time allotted to AGL and the community to make our respective cases.

1 Position Summary

The Scenic Hills is the local name given to the area covered by the Campbelltown Local Environment Plan [LEP] – District 8 (Central Hills Lands) on the South West outskirts of Sydney and adjoining land in the Camden Local Government Area (LGA). The Scenic Hills Association (SHA) was formed on March 17th 2010 by local land and home owners in, and adjacent to the Hills (in the suburbs of Varroville and St Andrews) with the aim of preserving and protecting the Hills from numerous threats to both its Environmental Protection (Scenic) zoning under that plan, and to the core aim of that zoning, which was to preserve the scenic qualities of the rural heritage landscape, with its remnant bushland (including the Critically Endangered Cumberland Plain Woodland) and its special sense of place for the community.

Our position mirrors that of the community and is strongly supported by Campbelltown City Council (Council). In 2007, Council, in rejecting a land developer's proposal to have part of the area rezoned for commercial purposes, stated¹:

“(2)...Council confirms in the strongest possible terms its support for the high value that the Community of Campbelltown and South Western Sydney places on the Scenic Hills as an iconic landscape with distinctive scenic, heritage and environmental qualities.

(3)...Council unequivocally commits to continue to maintain and preserve the Scenic Hills for future generations to enjoy.

(4)...Council declares it has no intention to amend current overall planning controls that would allow land uses and development with the Scenic Hills, not currently permitted by LEP District 8 (Central Hills Land).”

¹ Minutes of Campbelltown City Council Meeting November 13th, 2007.

AGL's current proposal - Stage 3 (Northern Expansion) of the Camden Gas Project (CGP) - extends its coal seam gas mining into the Scenic Hills of both Campbelltown and Camden LGAs, and, at the same time, into the Sydney Metropolitan Area. The *Subsurface* and *Surface Project Areas* encompass the whole land area of the Scenic Hills from Mount Annan Botanic Garden on the southern spur of the range to Denham Court Road in the north. Further, all of the proposed twelve well sites (of up to six well heads each, or 72 individual wells in total) and much of the connecting infrastructure are to be located within the Environmental Protection (Scenic) zoning of both LGAs, including the botanic garden.

We feel that AGL has been disingenuous in justifying its proposal to extend the CGP into the Scenic Hills. *Extractive industries* and *mining* are specifically prohibited under the Environmental Protection (Scenic) zoning and generally under Campbelltown LEP – District 8. However, AGL avoids this prohibition by classifying its project as either a *public utility undertaking* or *public utility installation in petroleum production*, making it permissible under the respective LEPs. SHA has received legal advice that AGL's interpretation of the legislation is not correct and may be subject to challenge.

Mounting evidence from other parts of NSW and Queensland suggests that the project is also incompatible with at least three of the objectives of the zoning (Zone 7(d1), 1 (b-c, e) in the Campbelltown LEP – District 8, concerning rural activities, including farming and agricultural research. This evidence is finding support in government departments, government agencies and universities. Last year departmental advice to the Federal Minister for Sustainability, Environment, Water, Population and Communities, warned that coal and CSG mining companies had underestimated the impacts of their activities on native springs, groundwater recovery and land subsidence². On December 3rd 2010 the National Water Commission released a Position Statement on CSG and Water, warning that “the potential impacts of Coal Seam Gas developments, particularly the cumulative effects of multiple projects are not well understood,” noting problems associated with hydrofracturing (or ‘fracking’), land subsidence, waste water management, water extraction and “significant social impacts” caused by the disruptive nature of infrastructure construction and access. Soil scientist, Peter Dart of the University of Queensland's School of Land, Crop and Food Sciences warned of CSG mining's potential to damage top agricultural soil³.

Any damage to water or soil in the Scenic Hills would be devastating in its overall impact due to the combined effect of the small size of the rural holdings, the age and dispersal of the remnant Cumberland Plain Woodland and the potential for severe droughts in the area since early colonial times.⁴ Destroying the viability of rural activity and bushland would have a domino effect on its heritage, its flora and fauna and the communities living there. However, in the preparation of its EA, AGL has avoided inconvenient findings that might have emerged from comprehensive, integrated *site-specific* research and from *local* community consultation - relying instead on ‘desk’ research, prior experience outside the area and applying a limited *envelope* approach that assumes that an otherwise complex interactive environment (at both *surface* and *subsurface* levels) can be isolated into pockets at the surface.

In particular, AGL has not provided a site-specific hydrology study or technical details in writing of its controversial use of hydrofracturing. In not doing so, it has failed to meet the

² *Australian Financial Review*, November 22nd 2010.

³ Reported in the *Courier Mail* November 20th 2010.

⁴ Local historian Verlie Fowler (former Campbelltown Councillor and former President of the Campbelltown and Airds Historical Society) wondered whether the history of severe droughts in the area was due to a localised ‘rainshadow’. We provide indicative analysis from the monitoring of rainfall at Varro Ville House over the last five years as Attachment A.

standards recently specified by the National Water Commission in its assessment of water related impacts in the EA. These omissions are consistent with the approach it has taken throughout the EA that environmental risks are all above ground in the *surface project area*, ignoring key concerns about *subsurface* impacts on the surface environment (and the connectedness between the two).

AGL may have also downplayed the expected impact of the project on this fragile environment by concealing the project size - referring to twelve well sites and associated ‘well heads’ (rather than saying 72 wells), and by omitting from the assessment critical infrastructure that must accompany the successful operation of the project, but which is yet to be specified e.g. infield compression, central water storage points and “ancillary infrastructure” including storage yards etc.

The omissions and methodological flaws in the EA limit proper scrutiny of the project, undermine the integrity of the EA and give the impression that AGL is pursuing a ‘foot in the door’ strategy that avoids proper accountability.

This casual disregard for the impact of this project on the rural nature of the Scenic Hills may derive from flawed assumptions about the future of the zoning. AGL has dismissed the need to protect the viability of the Hills’ rural activity, claiming (Main Report page 8-8), *“Much of this land has been rezoned or is proposed to be rezoned under a Draft LEP. It is therefore important to note in this regard that planned future growth in the area will result in large portions of currently undeveloped land being released and developed for a variety of land uses, thereby resulting in the loss of existing rural and agricultural land.”* This statement may apply to land in the Camden LGA where the bulk of the South West Growth Centre is located, however it does not apply to the Campbelltown objectives for the Scenic Hills. Further, it is not possible to isolate impacts on the adjoining land in Camden from that in the Campbelltown LGA.

Whether AGL’s apparent misunderstanding about the Scenic Hills is due to the lack of local research (based on an assumption that the conditions that it has been operating under in Camden can be transferred directly to the Campbelltown LGA) or is disingenuous, we cannot say. However, in the EA, AGL has also failed to outline the rare and unique properties (natural and cultural assets) of the Hills that make it a place of significance at national, state and local levels of government (and explain why the area was set aside as an Environmental Protection area under local planning in the 1970s within the Sydney Metropolitan Area [SMA]). AGL and its consultants could not have been ignorant of these facts, given the public availability of the information, nor could they have been ignorant of the ‘sensitive’ land uses in the Hills (monasteries, churches and schools), which sit in surreal juxtaposition to the industrial nature of the proposed activities. (This is discussed in detail in the next section.)

Finally, in considering the value of these community assets, we question whether the quality of the CSG deposits here (in terms of ease of extraction, given the proposal to use an unspecified amount of hydrofracturing) justifies the damage that such a process may cause to this unique area. There is nothing in the EA that addresses the economics of exploiting this resource relative to other CSG options or with reference to the cost to the community (i.e. a cost-benefit analysis), renewable energy sources are not included in the discussion of alternatives, and there is no evidence or quantitative data accompanying the “do nothing” option – only ‘motherhood’ statements. This is an unacceptable basis for making any risky business decision, and in particular, a project determination that is deemed to be of “state significance”, particularly as this must surely set precedents for further CSG exploitation in the SMA.

1.1 Our Position

SHA therefore supports Campbelltown City Council (Council) in strongly objecting to AGL's project application, and along with it, its Environmental Assessment (EA).

Two **petitions** were raised last year in support of the Scenic Hills:

- i. An online petition of 982 names (after removal of 62 incomplete entries) raised in 2010 in conjunction with the local newspaper, the Macarthur Chronicle (the Chronicle set up the petition and kept a copy). This is included as Attachment B;
- ii. 295 names gathered at the local Mount Carmel Catholic Church in 2010 (sent under separate cover).

Further, as members of the Lock the Gate Alliance we support the **call for a moratorium on all new approvals of coal and coal seam gas mining** to allow time for an independent enquiry to be carried out on the impact of the industry (and its controversial use of hydraulic fracturing) on health (human and animal), the environment, other land use, heritage, communities, land ownership and land values. Until this is done and appropriate legislation put in place to guide and regulate the industry we do not support approvals of any new projects – either to explore or develop. This includes the northern expansion of the CGP (Stage 3).

As a useful contribution to this process, we support Council's call for the establishment of a **Planning Assessment Commission** to specifically investigate this project given the flaws identified in the application and the DoP's role in permitting this EA to go on public exhibition against advice from Council and other government agencies.

2. Review of key aspects of the Environmental Assessment (EA) for Stage 3 of the Camden Gas Project.

2.1. Planning and Legal Permissibility of the Project.

AGL has classified its project as a major project under Group 2 Clause 6 of the State Environmental Planning Policy (Major Development) 2005 (SEPP 2005) and a project to which the Part 3A of the Environmental Planning and Assessment Act 1979 (NSW) applies. The NSW Minister for Planning is the determining authority.

However AGL has established its permissibility with reference to the LEPs of Camden and Campbelltown. AGL has referenced the Model Provisions in both LEPs to establish that its project is a *public utility undertaking* or *public utility installation*, and therefore does not require development consent for its activities.

SHA has received legal advice that AGL's interpretation of the applicable legislation is not correct and is subject to challenge.

2.2. Threats to Natural and Cultural Assets of National, State and Local Significance.

The EA has not recognised either the importance of, or the potential impact on the rare and unique properties of the Scenic Hills, as follows:

2.2.1. The area has a long history of severe droughts since colonial times, and indicative research on rainfall patterns (Attachment A) supports the local view that it may be in a localised rainshadow. When considering the small size of the rural holdings in the Hills and the dispersal of endangered or threatened species (flora and fauna) this means that any damage to its soil or surface water could have a catastrophic effect on the viability of the protection zone. The possibility of damage to landform (subsidence), soil and water that threatens rural activity in the Hills also threatens the Hill's European heritage, i.e. the rural heritage landscape, the agricultural and estate features contained within the landscape, and the state and nationally listed properties such as Varro Ville House, which depends on the surrounding land for its setting and context (800 acres of the original 1000 acre 1810 Varro Ville estate is wholly contained within the protection zone).⁵ All of these depend on the viability of rural activity in the Hills, but may also suffer damage directly - such as to the dams ('waterholes') established by the famous explorer Charles Sturt across the Varro Ville estate in the 1830s or to the stands of 19th century Critically Endangered Cumberland Plain Woodland that forms part of Varro Ville House's former landscape park.

2.2.2. The rural heritage landscape contained within the Hills is, itself, of increasing rarity in the Cow Pastures area. In a groundbreaking report jointly commissioned in 2000 by the NSW Heritage Council and the National Trust, the authors stated "*An overriding consideration for this entire study is that there remain within the Cumberland Plain and nearby areas, rural landscapes and landscape features of cultural value on account of their ability to demonstrate important aspects of early European occupation – gardens, vineyards, orchards, paddocks, fences, cemeteries, grant areas, windbreaks and accessways...These early colonial landscapes are, collectively of **exceptional significance** [our emphasis] for their ability to demonstrate the interaction of the early European settlers with the Australian*

⁵ See *Camden Gas Project Stage 3 (Northern Expansion) – submission from Owners of Varro Ville House*, January 12th 2010.

landscape...”⁶ The authors noted about Varro Ville: “ [It]...is one of the few estates remaining in the Campbelltown area where the form of the original grant and the former agricultural use of the estate is still appreciable to any great extent.”⁷ Many of the historic estates in the area that were included in above report are being subsumed and lost forever to development in the South West Growth Centre, including many that featured in Hardy Wilson’s, *The Cow Pasture Road* (Art in Australia, Sydney, 1920).

- 2.2.3. Mount Annan Botanic Garden is located at the southern end of the Scenic Hills. Dismissed in the Main Report of the EA as a “local tourist attraction” (page 2-4), it is the Australian native plant garden of the Royal Botanic Gardens Sydney, with a collection of over 4000 species, and is the largest botanic garden in Australia. It is home to 160 species of birds and other wildlife (including wallaroos, swamp wallabies and protected reptiles). It hosts the NSW Seedbank and the only publicly accessible collection of clonal replicas (first generation) of the endangered Wollemi Pine. AGL plans to locate portions of its gas gathering system in the botanic garden.
- 2.2.4. The Scenic Hills are central to an area of high *geographic* significance in Australian history generally and Aboriginal history in particular. Known as the Yandel’ora “land of peace between peoples”, this was a special meeting place between Aboriginal groups to settle disputes in a peaceable manner, determine law and arrange marriages at least once in a generation, with tribes coming from as far north as Maroochydore and as far south as Melbourne⁸. Its significance extends beyond the artefacts and landmarks identified by AGL in its EA, applying instead to the whole land area and its sense of place. The idea of the Yandel’ora is not dead but something living even today. St. Patrick’s College, Campbelltown, has a Yandel’ora Reconciliation Garden, a sacred space of native plants, made and maintained by the pupils. There is no mention of the Yandel’ora in the assessment of Aboriginal heritage and the associated archaeology (though these facts are freely available on the DECCW website). Appendix I Aboriginal Archaeological Assessment simply states (page 45), “There are currently no known Aboriginal Places’ within the Surface Project Area.”
- 2.2.5. AGL’s EA has ignored issues of compatibility with other land use in key parts of the Scenic Hills that are classified under certain planning instruments as ‘sensitive’, including monasteries (Carmelite community of nuns and friars), churches, and schools. The religious communities in particular, with their dedication to a life of contemplative prayer, depend on the tranquil semi-rural environment, with its relative silence and scenic beauty.⁹ The Carmelite Nuns were not consulted in the preparation of the EA yet believe that their way of life is seriously threatened by the project. We question whether AGL adequately briefed “third party” consultants about these communities in the preparation of the EA.
- 2.2.6. At both a practical and symbolic level, the Hills are regarded locally as the ‘lungs’ of Campbelltown in an area that, due to its geography, geology and (some would

⁶ Colleen Morris and Geoffrey Britton, “Colonial Landscapes of the Cumberland Plain and Camden, NSW: A Survey of selected pre-1860 Cultural Landscapes from Wollondilly to Hawkesbury LGA”, National Trust, 2000 (commissioned by the NSW Heritage Council and prepared by the National Trust of Australia, NSW, in 2000), p.4.

⁷ Colleen Morris and Geoffrey Britton, *ibid*, p. 97.

⁸ Royal Botanic Gardens website: www.rbgsyd.nsw.gov/annan/the_garden/indigenous

⁹ See submissions from both the Carmelite Friars (December 7th 2010) and Carmelite Nuns of Varroville. (December 15th 2010).

reasonably contend) past planning mistakes, already suffers unacceptably high levels of air pollution and lung related disease. Cumulative pollution impacts, along with any damage to the viability of rural activity and the associated biodiversity of remnant, Critically Endangered Cumberland Plains Woodland in this fragile environment, would result in the destruction of the Hills as a greenspace buffer zone so vital to the community (and in the eyes of the community)¹⁰.

- 2.2.7. The Scenic Hills have long been regarded by Council as the backdrop to the City of Campbelltown¹¹, separating it from Liverpool and Camden. Council has reaffirmed the Hills' role in its current planning for the LGA, citing a draft Visual Study for the new consolidated LEP, *"the landscapes of the Scenic Hills provide the setting for the City of Campbelltown and are what make it a truly unique example of a satellite city."* We note that Council has also suggested that this project has *"the potential to adversely impact on the implementation of strategic planning documents that apply to the district."*¹²

2.3. Integrity of the EA

- 2.3.1. The EA appears to be largely based on prior knowledge of other projects - in particular the Camden Gas Project in its previous stages - and desk research. Key assessments specific to the geographic area proposed for Stage 3 have not been carried out. Where site-specific assessments are deemed necessary, these are scheduled to take place **after** project approval (sub-reports). This undermines the integrity of the EA, as follows:

- The community is being asked to comment on a project that is specific to a geographic area. The community cannot comment on information that has not been provided. Further, the community does not have AGL's resources and should not have to bear the burden of seeking the information that AGL has not bothered to provide.
- In instances where the community has local knowledge or expertise, certain key information and/or the EA's conclusions have been shown to be flawed. These include European Heritage (refer Submission from the owners of Varro Ville House), Noise (refer Submission from the Carmelite Nuns), Hazard and Risk (refer Submission from the Carmelite Nuns), Consultation (refer Submission from the Carmelite Friars).
- Key reports show a lack of quality control, for example the Preliminary Hazard Analysis (See Submission from the Carmelite Nuns) with its narrow focus, layout errors, omission of site-specific data, lack of peer review, and vague qualitative statements. Consistent with other reports in the EA, the Analysis assumes that all hazards will be above ground. We would have expected that issues identified by the National Water Commission and other government agencies would have been assessed as part of this. We would also like to see included issues about well casing damage/deterioration (longevity), and the cumulative impact of so many wells placed in close proximity to each other, with the use of hydrofracturing and the potential for these to weaken the surrounding structure (among other hazards) – especially as we understand that this is a relatively new approach in CSG mining.

¹⁰ See Attachment B for community comments.

¹¹ *Campbelltown, Camden and Appin Structure Plan*, State Planning Authority of New South Wales, 1973.

¹² See Submission by Campbelltown Council page 23.

- Despite extensive reliance in the EA on AGL's experience with the CGP Stages 1 and 2, AGL¹³, in its meeting with SHA on Friday December 10th 2010 admitted (in response to questioning by SHA representatives) that it had no lessons to bring to the CGP Stage 3 as it had not carried out any environmental monitoring in the previous ten years of the CGP. Further AGL admitted that it was not possible to gain this information *after the fact*, as it had taken no base line measurements. That being the case, AGL's experience with the CGP to date, and for the purposes of the EA, is entirely subjective.
- In AGL's Community Consultative Committee meeting of November 25th 2010, and again in the December meeting with SHA, AGL admitted that it had not carried out an hydrology/hydrogeology study and was relying on general knowledge of the Sydney Basin for its assessment of ground and surface water impacts (despite government agencies tabling these as key issues). AGL's hydrogeologist admitted to members of SHA that without a specific study he could not say how dams (including the historic dams across the Varro Ville estate, which he was apparently unaware of) were fed, and he could not rule out the possibility of natural springs in the area. It follows therefore, and with reference to concerns raised by the National Water Commission in particular, that AGL cannot rule out ground and surface water contamination in this fragile environment.

2.3.2. Key claims in the EA are just blatantly untrue or questionable.

- In the Main Report, on page 1-6, AGL claims, *"During the preparation of this EA, key stakeholders were identified. These stakeholders included local community groups as well as key government agencies. Throughout the preparation of the EA, these stakeholders have been kept informed of the progress of the Project and issues raised by these stakeholders have been addressed as part of the EA."* The EA further states (Main Report page1-8), *"Well surface locations, gas gathering lines and access roads have been chosen in consultation with landowners"*, and (Main Report, page 3-4) *"Consultation with landholders during the early Project design phase ensured that well surface locations and other infrastructure were sited to accommodate the primary existing land use."* While AGL has kindly responded to SHA's request for meetings since the EA went on public exhibition and has invited SHA onto its Community Consultative Committee, SHA was not included in the preparation of the EA and we are not aware of any other 'community groups' in the Scenic Hills that were consulted. Landowners such as the Carmelite Friars have complained (in their Submission) that AGL did not behave with integrity in presenting the benefits of having wells located on their property while omitting key information about problems and risks. The Serbian Orthodox Diocese of Aged Care & Education Property Fund claim that its land has been included in the EA as the location for a well site of up to six wells (VV07) despite it declining permission to AGL to locate them there. A representative of the Diocese has further indicated that they were unaware of this fact until it was brought to their attention by SHA after the deadline for closure of submissions.

¹³ Present from AGL were Adam Lollback (Lands and Approval Manager, Upstream Gas) and the recently appointed John Ross (Manager Hydrogeology, Upstream Gas).

- In the Main Report page 8-8, in referring to the ‘undeveloped’ and ‘agricultural’ land in the *surface project area*, AGL states, “*Much of this land has been rezoned or is proposed to be rezoned under a Draft LEP. It is therefore important to note in this regard that planned future growth in the area will result in large portions of currently undeveloped land being released and developed for a variety of land uses, thereby resulting in the loss of existing rural and agricultural land.*” This statement is not correct. It may apply to land in the Camden LGA where the bulk of the South West Growth Centre is located, but, to our knowledge, does not apply generally to the *surface project area* of the CGP (Stage 3).
 - Feedback to one of our members leads us to question whether AGL’s proposed management of Aboriginal artefacts of *moderate to high archaeological sensitivity* has the agreement of the local Aboriginal community.
 - Constant references to environmental management and monitoring in prior stages of the CGP are apparently untrue though we wonder about the statement (page 1-7) “*The outcomes and recommendations contained within this EA would be incorporated into the existing EMS for the CGP. This would ensure a consistent level of environmental management and monitoring across the CGP.*” Given AGL’s admission (above), and assuming this is a statement of true intent, it would signal a continuation of the status quo (i.e. **no** monitoring).
- 2.3.3. We note Campbelltown City Council’s claim in its submission that the EA has failed to satisfactorily address all the Director General Requirements (DGRs).
- 2.3.4. The project is not fully specified.
- In our meetings with AGL, it acknowledged that it would need in-field compression for its northern well sites (RA03, RA09, VV07 and VV11). AGL also acknowledged that it might need in-field compression for another three of the mid-range well sites (CU20, 22 and 02). In fact the requirement for in-field compression cannot be specified for any well site until the performance of the wells is ascertained. This means that a third of the well sites are not fully specified, and at least 60% are in doubt. As such, AGL is asking for approval to proceed with a project, elements of which are known to be required but whose form and location do not form part of this report.
 - Central water storage points, ancillary infrastructure (including storage yards) are listed as part of the project but their location is designated as “where required”.
 - It is disturbing that comments by AGL and the DoP suggest some complicity in allowing this, as it raises concerns that AGL is being allowed to pursue a ‘foot in the door’ strategy.
- 2.3.5. We believe that the envelope approach variously referred to as the *development envelope* or *assessment envelope* or the *environment envelope* is a flawed methodology. In limiting its site-specific environmental assessment of impacts (post approval) to a small geographic area around the *surface area* of the well sites and connecting infrastructure, it ignores the complex interactive nature of the environment (though this is at the forefront of current academic study across a number of disciplines) and does not take account of emerging evidence about *subsurface* risks to the environment from coal seam gas mining particularly with regard to groundwater and the use of hydrofracturing.

2.3.6. AGL's attitude to the findings of the EA (as expressed in the EA) gives little confidence that significant damage will not occur to the environment. AGL commits only to giving 'due care' but if there is conflict between the needs of the project and that of the environment, the project comes first. This is very evident in its undertakings on Aboriginal heritage. Where artefacts or areas of high archaeological sensitivity "cannot be avoided" they are merely to be removed and replaced later (we question the acceptability of this to the local aboriginal community) or further archaeological work done (prior to destruction?). Where there are conflicts with European Heritage AGL will "consider" taking certain action but makes no commitments. With regard to Critically Endangered Cumberland Plain Woodland (CPW) the EA (Appendix E, page 2) says, "*Despite the high level of flexibility in locating the major infrastructure of the project and the adoption of ecological sustainability principles in the design of the project there remains some potential for CPW to be affected in locations such as Well Surface Locations (WSL), the Gas Gathering Lines (GGL) and Main Gas Gathering Spine.*" Notably the criteria and process for deciding whether something can/cannot be avoided are not specified and seem to be entirely at the discretion of AGL.

2.4. Possible remedial action by the DoP

2.4.1. It is our view that the **site-specific sub-reports** are essential for **project determination**. We do not accept the provision of sub-reports following project approval, nor that these should be generic to the CGP as a whole. Further we have no confidence in AGL's ability to provide quality sub-reports without independent scrutiny and community vetting, as follows:

- In our meetings with AGL, and in the EA, AGL has not demonstrated an understanding of, or perhaps sufficient regard for scientific method, giving us no confidence in AGL's ability to prepare or oversee sub-reports of an acceptable standard. As an example, in the community meeting in November, AGL referenced two sources of evidence to support the long term integrity of its concrete and steel well casings:
 - a. The longevity of concrete and steel buildings (ignoring the different environment that well bores operate in),
 - b. Tests being conducted on well casings of the 1970s (while admitting that the technology used in the 1970s may not be identical to that used in today's wells).
- AGL has applied the term "independent" to consultants that are more aptly described as "third party" where AGL has merely outsourced the work under its own control and supervision.¹⁴
- Issues of quality and quality control of reports have been documented in point 2.3.1 but are reiterated here.
- AGL's refusal to provide written detail of critical risk areas, e.g. its hydrofracturing process, the chemicals used, the expected incidence of usage of this technique - on the basis that it is 'too technical' - gives us no confidence in AGL's willingness to subject their project to proper scrutiny.

¹⁴ This point was raised by us in the Community Consultative Committee in November.

- The DoP's acceptance of this EA for public exhibition without incorporating the requests of Campbelltown City Council and other government agencies gives us no confidence that the DoP can oversee the sub-reports either and we note that this was the same conclusion arrived at by Council.

2.4.2. In our meeting with AGL on December 10th 2010, AGL indicated that it would be conducting a baseline assessment and monitoring of environmental impacts in Stage 3 (though this is not included in the EA). **We do not accept this as a condition of approval**, as follows:

- We have no confidence in AGL's ability to self-monitor.
 - AGL, in this EA and in meetings with us, has not exhibited an understanding of (or perhaps enough regard for) scientific method.
 - AGL's past performance and its non-inclusion of this issue in the EA suggest a prior careless disregard for the environment and heritage until community pressure is applied.
- We question whether a true base line could now be taken given emerging evidence on the environmental damage caused during exploration work, and noting that this has recently informed the "tough new rules" announced by the NSW Minister for Planning on December 19th 2010.
- Most importantly, however, baseline monitoring of Stage 3 merely makes the Scenic Hills Environmental Protection zone the 'guinea pig' for future developments. We cannot accept this as a condition of approval. The preciousness of water in this area (demonstrated by a history of severe droughts since colonial times) when combined with the small size of current landholdings, risks their viability. Damage to essential streams, dams and catchment and/or any reduction in water supply in this fragile area would spell the end of the Hills as we know them. It would irreparably damage the heritage of the area both directly and as a consequence of the dependence of that heritage on the viability of the Hills as a rural concern, together with the associated biodiversity of remnant, protected Cumberland Plains Woodland (some of which is part of the landscape park associated with Varro Ville House). It would disrupt the community in the Hills, in particular those whose land use is categorised as 'sensitive', and destroy land values. It would compromise planning for the LGA¹⁵.

2.5. Conclusions and Discussion.

The EA appears to have been prepared under a legislative environment of 'facilitation' rather than 'regulation'. The generality of the data used (rather than site-specific data), the errors, the use of vague motherhood statements, the omission of important detail and the number of 'unknowns' do not allow expert scrutiny of the documents. In the Main Report, AGL's own language absolves it of commitment - it may "consider" doing things but makes few undertakings that it can be held accountable for - and there are a number of sub-reports outstanding. We find the methodology underpinning applicable parts of the environmental assessment flawed as it ignores the complex interactive nature of the environment (though this is at the forefront of current academic study) and does not take account of emerging evidence about risks from CSG mining (especially water impacts). AGL either does not

¹⁵ See Submission by Campbelltown Council page 23.

understand the environment it intends to operate in Stage 3 or has chosen to downplay the importance of the area and its fragility. As a result this application appears to be a request to the DoP for *carte blanche* to explore, to ‘make it up as it goes along’ and to self-monitor. Yet AGL, in its meetings with us, has constantly emphasised that it has met the requirements of the DoP. That being the case, the DoP is not doing the job the community expects.

For at least the last decade the community has been led to believe that CSG was the environmentally friendly energy alternative. This is because its environmental credentials were only assessed at the end use stage. When its assessment includes the production phase, an entirely different and alarming picture emerges. Where CSG has been in production for some time and has undergone rapid growth – as in the USA, and Queensland – the adverse impact on communities, landholders, environment and health cannot be ignored. According to the EA, the production of CSG in NSW is only 3.5% of that in Queensland, yet already problems are emerging. The petroleum industry points to different regulatory and geological environments to reassure the community in NSW. However concerns tabled by specialist consultants since 2001, and reports of problems from Queensland relate to issues that appear to be common across these geological environments: well casings being sheared off by fracking¹⁶, cement carbonation and deterioration¹⁷, “unknown and unsuspected faults [in the geology]...acting as conduits allowing water to drain from the upper aquifers of the Artesian Basin into the previously separate lower Permian layers [affecting shallower groundwater resources]”¹⁸. The Position Statement of the National Water Commission released on December 3rd 2010 summarises much of what has apparently been known for the last decade.

Until now, the plight of landholders and communities has been able to be ignored probably because the problems were outside the major population centres. This project takes CSG mining into the metropolitan area of Australia’s largest city and threatens to destroy important national and state cultural assets along with a much needed ‘oasis’ in the middle of rampant development in Sydney’s South West.

In 2005, a specialist consultant identified four key hazards of CSG mining in the Wyong area by Sydney Gas Ltd (now incorporated into AGL), with application to the whole of NSW, concluding, “...there should be no further drilling in the area until a full and independent hydrology study as been carried out. Consideration should also be given to classifying coal bed methane sites as *industrial chemical sites* [our italics] controlled by the relevant regulations.”¹⁹ This is a long way from being the benign *public utility undertaking* that AGL claims for this project and the consequent regulations it expects to operate under in the Scenic Hills Protection area.

2.6. SHA position

SHA supports environmentally friendly renewable energy alternatives and would welcome discussion of how the Scenic Hills could participate in such a scheme. However there are currently too many unknowns with CSG mining. As such, and following the precautionary principle, we cannot support this project’s extension into the Scenic Hills. As presented, we regard the CGP Stage 3 (Northern Expansion) as another attempt to industrialise the Hills, notably the Environmental Protection area, in a long line of previous attempts from other

¹⁶ Tori Shensstone, formerly of Bow Energy, in an address to the Brisbane Ekka 2009.

¹⁷ Damien Mavroudis, *Downhole Environmental Risks Associated with Drilling and Well Completion Practices in the Cooper/Eromanga Basins*, Department of Primary Industries and Resources, SA, March 2001.

¹⁸ C. M. Aitkinson, *Environmental Hazards of Oil and Gas Exploration*, Prepared for National Parks of NSW Inc. Sydney, August 2002

¹⁹ C. M. Aitkinson, *Coal Bed Methane Hazards in New South Wales*, Prepared for Tony Davis & Associates, Australian Gas Alliance, New South Wales, January 2005, p.3.

proponents - the RTA in 2008-2010 (for a major truck rest area in/adjoining the Environmental Protection zone) and the aforementioned 2007 proposal for a business park – both of which were opposed by Council and the community and were ultimately disallowed. We urge the DoP to respect the Local Environment Plans for the Scenic Hills (Camden and Campbelltown) and reject this project application.

Attachment A: Comparison of Annual Rainfall (mm) across Different Locations in the Sydney Metropolitan Area

	2006 (August to Dec.)	% diff.	2007	% diff.	2008	% diff.	2009	% diff.	2010	% diff.	Av. diff. (‘07-’10)	Total (‘07-’10)	% diff.
Observatory Hill (Sydney CBD)	994.0 (414.0)		1499.2		1082.6		956.2		1153.8			4691.8	
Liverpool (11.5km from Varroville) c/f Sydney	521.3 (220.6)	-48% (-47%)	1044.2	-30%	995.6	-08%	697.7	-27%	865.8*	-25%	-23%	3603.3	-23%
Ingleburn (4.1km from Varroville) c/f Sydney	474.0 (226.4)	-53% (-45%)	1011.2	-32%	923.0	-15%	655.5	-31%	879.2*	-23%	-25%	3468.9	-26%
Varro Ville House (c/f Liverpool and Ingleburn)	N/A (176.0)	(-20%) (-22%)	938.3	-10%	879.5	-12%	612.5	-12%	739.5	-15%	-12%	3169.8	-12%
				-07%		-05%		-07%		-16%	-08%		-09%

* Much of the monthly data collected were not quality controlled, and by comparison with other years may have been overestimated. The Varroville data is consistent with other years when compared with Sydney CBD.

Commentary

As expected Ingleburn and Liverpool (south west of Sydney CBD) get approximately 30% less annual rain than Sydney CBD on average (using the more reliable data), while Varroville gets approximately 7% less rain than its nearest suburb to the north east (similar to the difference between Liverpool and Ingleburn). Notably however, in the drought of 2006, the effects were more severe with the south western suburbs getting only half the annual rainfall of Sydney, and Varroville getting 20% less rain than its nearest suburbs (measured over the last five months of that year) or almost 60% less rain than Sydney. This exaggerated effect is not seen in other drought years of the last decade and appears to be related to specific weather effects in that year (just as in 2008 there was relatively more rain across Sydney). However it supports historical records of severe localised droughts.

Note: Rainfall at Ingleburn, Liverpool and Sydney were taken from Bureau of Meteorology weather stations, while the rainfall at Varroville was recorded at Varro Ville House. Only the last five months of rainfall were recorded at Varro Ville House in 2006.

Scenic Hills Petition - Attachment B

To: NSW Premier Kristina Kenelly, NSW Minister Tony Kelly (Planning/Infrastructure), NSW Minister David Campbell (Transport & Roads):

We, the undersigned, wish to preserve the Scenic Hills region of Campbelltown on the South West outskirts of Sydney as expressed in the Campbelltown Local Environment Plan (LEP) – District 8 (Central Hills Lands). We are deeply concerned that there are two plans underway that are contrary to the zoning and/or objectives of that zoning but whose proponents are seeking/have sought the approval of the NSW Government in order to proceed:

1. **Australian Gas Light Company (AGL)** is seeking approval from the NSW Minister for Planning to put gas extraction wells, gas gathering pipelines and a gas extraction plant into the area zoned Environmental Protection (Scenic) at Varroville under Part 3A of the Environmental Planning and Assessment Act 1979 (Application No.09-0048);
2. **The NSW Roads and Traffic Authority (RTA)** has sought and gained approval from the NSW Minister for Transport & Roads to put a major heavy vehicle rest area at Varroville adjoining the area zoned Environmental Protection (Scenic) at Varroville.

Both plans will adversely affect the viability of the Scenic Hills region, and the quality of life of the surrounding residential, religious, and heritage communities. They will also degrade the environmental, historic, cultural and spiritual values of the area. We ask that the wishes of the community, as reflected in the current Campbelltown LEP, be respected and that approval of both projects be denied (AGL) and/or withdrawn (RTA).

No. (Office Use)	Date	Name	Address	Signature

Scenic Hills Petition - Attachment B

1.	Apr 23 2010	David Campbell	Curran Hill	
2.	Apr 23 2010	Jacqui Kirkby	Varroville	
3.	Apr 23 2010	Jocelyn Kramer	Varroville	
4.	Apr 23 2010	Dorothy Robinson	Mt Riverview, NSW	I believe this development is totally inappropriate. I have been a regular visitor to Varroville for over 30 years and I am very upset to learn of this proposal.
5.	Apr 23 2010	Peter Gibbs	Varroville	Shameful desecration of an area strongly protected for thirty five years. This area is regarded as the Centennial Park of the Southwest and therefore untouchable.
6.	Apr 23 2010	Maria Wilson	Varroville	I am against the development for AGL. Surely there is an area for this away from residential homes and the scenic hills for this type of development. As far as RTA goes this will cause more noise and pollution with the stopping and starting up of the trucks. Can this truck stop be put in an area where there are no residential homes nearby.
7.	Apr 23 2010	Elizabeth McGuire	St Andrews	In addition to this environmental vandalism, the Heavy Vehicle Rest Area will cause a very dangerous area on a road we have waited so long to have upgraded. The rest area should be located south of Narellan Rd before the traffic from newly developing areas joins the road. The Government has helped fund the widening of the road with additional on and off ramps only to undermine all of this work by approving a Heavy Vehicle Rest Area right in the middle of the busiest and most dangerous section of road. The decision is beyond comprehension.
8.	Apr 23 2010	John Chew	Campbelltown	I support a plan to preserve this residential suburban green buffer and environmental preserve over proposals to install a heavy vehicle rest area and a gas power plant.
9.	Apr 23 2010	Jeanne Villani	Sydney	Have the people who plan to desecrate this beautiful area ever been there and seen what they are proposing to destroy - shameful!
10.	Apr 23 2010	Lea McLachlan	Kearns NSW	This proposed AGL development will devastate our beautiful area. Too much pollution, too close to schools, too close to families. At what cost? Our health? Macarthur SAYS NO!
11.	Apr 23 2010	Alan Baynham	Central Coast	An Environmental Protection Zone denotes an area that should be protected. It is beyond belief that this area is even being considered for industrial activity. Future generations will rage at the ignorance of this proposal.
12.	Apr 23 2010	Maria Cindric	Raby	I strongly object to the AGL development. The impact on the health of local residents and the pollution this will contribute to an area already experiencing levels above national safety standards.
13.	Apr 23 2010	Mark Andrew Street	Eschol Park	
14.	Apr 23 2010	Peta Joanne Street	Eschol Park	
15.	Apr 23 2010	patricia shepherd	st.andrews	I strongly object to AGL development. They should leave nature the way it was meant to be. Leave scenic hills alone.
16.	Apr 23 2010	Naomi Simpson	Roseville	Have family living right next to this proposed site!
17.	Apr 23 2010	Katherine Knight	Teloepa	Scenic Hills is a precious Sydney asset. Please CONTINUE its PROTECTION. I admire AGL's focus on

Scenic Hills Petition - Attachment B

					alternative energy sources, but not to the destruction of an area already zoned Environment Protection and with such cultural, spiritual and historic values.
18.	Apr 23 2010	James Bell	Goulburn		I travel through this area each week and value it's heritage and aesthetic importance. Lets not lose more of our valuable open space, particularly space of such historic significance.
19.	Apr 23 2010	Glenda Kirkby	St. Ives		Sincerely James Bell How can we justify the destruction of yet another significant heritage area - our government apartments need to be accountable to the people of the state. Hear our voices.
20.	Apr 23 2010	Sue Kelly	12 Hawkins Pde Blaxl		
21.	Apr 23 2010	rosemary breen	Inverell		We need protected zones that ARE protected. Future generations will thank you if you have the strength to withstand the AGL petitioning.
22.	Apr 23 2010	Roberta Dormer	Gold Coast		I have been visiting my sister in Raby for the past 25 years and to put a gas plant so close to residential properties has the potential for a disaster and damaging the environment is unacceptable.
23.	Apr 23 2010	Anita Riley	Raby		I strongly oppose these 2 proposals for the scenic hills. They will greatly affect the quality of life of the residents in the surrounding area. Residents who are expected to abide by the Scenic Hills Protections Order when it comes to development, yet big corporations can just come in and disregard everyone else.
24.	Apr 23 2010	Florence Iorfino	Varroville NSW		
25.	Apr 23 2010	Elisabeth Peeters	Kirchzarten/Ger many		
26.	Apr 23 2010	Jacqueline Milne	Robertson		The Scenic Hills are part of the rich and important history of Campbelltown. The green belt of the hills is a prized asset to preserve and protect not to exploit and destroy.
27.	Apr 23 2010	Greg Johnston	St Andrews		Our family moved here 22 years ago to look into the Scenic Hills, not a truckstop and gas plant. Our votes will go to whatever party decides to stop this nonsense.
28.	Apr 24 2010	Laurie Bissett			
29.	Apr 24 2010	Johny Arattukulam	Varroville		Let God's will be done!
30.	Apr 24 2010	Belinda Mitrovich	Castle Hill		As a regular visitor to this area I ask that the needs of the community and wider population are heard and respected. The south west is already undergoing massive change and development as Sydney expands, and as this continues government should recognise the legitimate need for communities to have green space & a connection to the area's history - this is not easily replaced. We need to think about long term benefits not just short term gain.
31.	Apr 24 2010	Michael Barbato	Kiama		As an occasional visitor to the Carmelite sisters at Varroville, I greatly appreciate the need to preserve the peace and ambience of the Scenic Hills for all those who live there as well as those that visit or attend spiritual retreats.

Scenic Hills Petition - Attachment B

32.	Apr 24 2010	Lauren Eagles	St Andrews	
33.	Apr 24 2010	Vicki Eagles	St Andrews	I am appalled at the idea of placing a gas plant so close to schools and residential properties!
34.	Apr 24 2010	Katherine Jones	Eschol Park	
35.	Apr 24 2010	Norvin Roma	St. Andrews	What is then an Environmental Protection Zone if it doesn't apply to areas like the Scenic Hills? I strongly oppose to the proposed AGL's gas extraction plant and approved RTA's truck stop in Varroville.
36.	Apr 24 2010	kelly jones	eschol park	
37.	Apr 24 2010	Vivien Simpson	Robertson	
38.	Apr 24 2010	Margie Flint	Grasmere	I vehemently oppose the proposed AGL's gas extraction plant and approved RTA's truck stop in Varroville. It's time the Govt listened to the people and NOT to the developers. I've had enough of this pathetic Government.
39.	Apr 24 2010	karen potter	campbelltown	
40.	Apr 24 2010	Andrea Schoenheimer	Ashmore Qld	Environmental Protection Zoning must apply to everyone including business. Sydney is already highly polluted with green space at a minimum so this last area of the Scenic hills must be protected.
41.	Apr 24 2010	Myra Godfrey	Raby	I have lived at Raby for 22 years and I moved here to enjoy the Scenic Hills. I am opposed to the proposed gas plant and the RTA truck stop. These hills are a zoned protected and should be left untouched by any development.
42.	Apr 24 2010	Stuart	raby	As a resident in the area for more than twenty years, I was shocked and outraged at the news of this proposed development by AGL. If the story which has been printed in both our local papers is anything to go by, there are a lot of secret deals being made by big business and a few select power brokers behind closed doors.
43.	Apr 24 2010	Tracey Chenoweth	Raby	We do not want this here, this a young family area, please think of the kids not the money..
44.	Apr 25 2010	Peter Lewis	Roseville, NSW	The NSW State Government must stop abusing local area democratic rights. Listen to the people!
45.	Apr 25 2010	Chris Lewis	Roseville, NSW	Stop over-development in the Sydney region. Keep the green belt and respect the LEP, and Heritage Listed sites.
46.	Apr 25 2010	Maggie Chambers	North Sydney	The Scenic Hills are a precious reminder of our colonial past. The landscape and the remnant colonial buildings must not be threatened or destroyed by powerful groups such as AGL and RTA or by individuals seeking personal gain. Once developed, it will be gone forever.
47.	Apr 26 2010	Annette Brown	Campbelltown	
48.	Apr 26 2010	Barry Moore	St Andrews	No development in Scenic Hills
49.	Apr 26 2010	Daniel Lewis	Raby	Leave the Scenic Hills alone
50.	Apr 26 2010	mr leslie shepherd		
51.	Apr 26 2010	Len Williamson	Varroville	Not here! Not now! Not ever!

Please post petition forms back to: Scenic Hills Association,
PO Box 5946, MINTO BC 2566. www.scenic hills.org.au

Scenic Hills Petition - Attachment B

52.	Apr 26 2010	Katrina Hobhouse	Campbelltown	The Scenic Hills is an environmental protection area. A truck stop would contravene a major objective of the Scenic Hills while an AGL Gas Treatment Plant located in the Hills would be contrary to the zoning. Such projects should be located in designated industrial areas and not in historic, rural or environmentally-sensitive areas.
53.	Apr 26 2010	Gary Hudson	KEARNS	It is a well known fact that the air quality in the Campbelltown area is not of the same quality as other Sydney environs. This project will have a further negative impact on our community. Please do not tamper with the quality of life for our children.
54.	Apr 26 2010	Amanda Godfrey	Eagle Vale	
55.	Apr 26 2010	Jennifer Collins	St Andrews	How dare you even consider tearing apart the last green belt in this area. Our quality of life will be destroyed by this truck stop and gas plant. If this goes ahead don't even consider re-election on the strength of this electorate.
56.	Apr 27 2010	Laura Iorfino	Varroville	
57.	Apr 27 2010	Jessica Hoare	Raby	
58.	Apr 27 2010	Soraiya Gharahkhani	Raby	
59.	Apr 27 2010	Bianca Gharahkhani	Raby	
60.	Apr 27 2010	Tendai Dzwairo	Raby	
61.	Apr 27 2010	Eloisa Gharahkhani	St Andrews	
62.	Apr 27 2010	Saeed Gharahkhani	St Andrews	
63.	Apr 27 2010	Geoffrey Britton	Zetland	
64.	Apr 27 2010	Luke Fuda	Leumeah	
65.	Apr 27 2010	Karen Wright	Mount Carmel School	We need to make it very clear that we do not want this next to our school. It is irresponsible to think that this would ever be an acceptable location between two schools and religious communities.
66.	Apr 27 2010	Catherine Graham	Mount Carmel School	
67.	Apr 27 2010	Roger Powell	Leumeah, NSW	The Scenic Hills area is an inappropriate place for a gas refinery.
68.	Apr 27 2010	Kevin Harpley	Varroville	Mt Carmel High School Teacher.
69.	Apr 27 2010	Alexis Dailey	Eschol Park	The very reason we bought a house in this area was to enjoy the "scenic hills", do not destroy them!!
70.	Apr 27 2010	Emily Davis	Varroville	
71.	Apr 27 2010	Kristina Owen	Mt Carmel	Students should not attend a school in such close proximity to a truck stop and gas plant. Lets preserve and

Scenic Hills Petition - Attachment B

			School	protect this beautiful environment and conserve the green areas remaining. The local community have every right to be heard.
72.	Apr 27 2010	Lisa Skola	Raby	I have lived in this area for 27 years it is important to save the scenic hills. I am tired of the government trying to destroy our beautiful area. I don't even have gas. if this is meant for the Camden area let them have it.
73.	Apr 27 2010	John Skola	Raby	
74.	Apr 27 2010	Lauren Skola	Raby	
75.	Apr 27 2010	Emily Skola	Raby	
76.	Apr 27 2010	Chardy Miller	Mount Carmel School	
77.	Apr 27 2010	Phil McIntosh	Mount Carmel School	
78.	Apr 27 2010	Michael Quinn	Mount Carmel School	
79.	Apr 27 2010	John Patrick Kelly	Mt Carmel High School	The Scenic Hills have been defined exactly for this reason - they are a green reserve surrounding our area that are protected from commercial and industrial development to allow a scenic vista and a healthy green belt. A gas processing plant and a truck stop are completely contrary to this definition.
80.	Apr 27 2010	Jennifer Adams	Mt Carmel High School	
81.	Apr 27 2010	Lynette Willis	Mount Carmel School	
82.	Apr 27 2010	Kristina Rombi	Eagle Vale	This idea is crazy! There is already sooo much infrastructure in Campbelltown that has destroyed our wonderful natural environment. This cannot go ahead. If you try to enforce this and don't listen to what the people want you will be in for a tough battle!! Just because you don't live in Campbelltown doesn't mean you have the right to destroy where other people live. Use the brain God gave you its there for a purpose. Please show that you can be a reasonable politician and not a complete oblivious idiot to what is truly important.
83.	Apr 27 2010	Clarissa Pearce	Mount Carmel High	
84.	Apr 27 2010	Claudia Patten	Eagle Vale	Please don't let this happen to the people of Campbelltown. Why is our insatiable appetite for energy clouding our reasoning to protect the already delicate environment.
85.	Apr 27 2010	Elise Jane Markus	Varroville	I work at Mt Carmel High School and having this built near a place where young adults breathe and develop- it's just not wise. Please do not build this at such a beautiful and serene location!
86.	Apr 27 2010	Hayley Mills	Campbelltown	
87.	Apr 27 2010	Nikki Nightingale	Woodbine	
88.	Apr 27 2010	alan c henville	raby	how about the co2 omissions

Scenic Hills Petition - Attachment B

89.	Apr 27 2010	Sarah Janson	Mt Carmel High	
90.	Apr 27 2010	Diane Redmayne	Mt Carmel High	I have treasured the scenic hills area since moving into the area in 1983 and am saddened to think that politicians and business should want desecrate this area and over ride the wishes of the local citizens. Children need a nurturing environment in which to grow and learn - we teach them about caring for the environment and integrity- where are our role models in state leadership??
91.	Apr 27 2010	John Rombi	Eagle Vale	We're constantly told that SW Sydney (Macarthur area) has the worst pollution in the Sydney basin. We're losing our Scenic Hills to development. Kristina Keneally (as planning minister) ok'd the Power Plant just south of Campbelltown in a beautiful rural area.....and now the Gas Plant. If we ever build Nuclear Reactors, I'm sure Macarthur will be chosen for the radio active waste..... Not only save The Scenic Hills, but save Campbelltown!!
92.	Apr 27 2010	dianna itskos	narellan	
93.	Apr 27 2010	rebecca	Raby	
94.	Apr 27 2010	Anne Janson	Dapto NSW	
95.	Apr 27 2010	Chassagne Miller		
96.	Apr 27 2010	HELEN EDMOND	WINGHAM	I AM NO LONGER A RESIDENT OF CAMPBELLTOWN, BUT VISIT ON A REGULAR BASIS. TO TAKE AWAY SCENIC HILLS WOULD BE A BIG MISTAKE, AS THERE ARE NOT MANY UNTOUCHED, NATURAL AREAS IN CAMPBELLTOWN. PLEASE RECONSIDER LOCATIONS FOR THE GAS PLANT AND PIPELINES.
97.	Apr 27 2010	Gwenda Ellen Collett	Leumeah.2560	Don't like dictatorial governments approving projects against the wishes of the people in the areas concerned. They do so at their own peril as those same people will vote & the people will be the ones who will dictate dictatorial governments OUT!
98.	Apr 27 2010	Bronwyn Van Den Nouw	Mount Carmel HS	
99.	Apr 27 2010	Gareth Reavell	Leumeah	
100.	Apr 27 2010	Mary Khalil	Raby	How can you poison our children - what person would allow an agl gas plant so close to a school and homes.
101.	Apr 27 2010	Alexander Khalil	Raby	
102.	Apr 27 2010	Michelle McDonald	Glen Alpine	
103.	Apr 27 2010	Dennis & Sue Lean	Varroville	We stronly oppose to the AGL and Tuck site being developed in our community!!
104.	Apr 27 2010	William Peisker	Ambarvale	As one of the most rapidly expanding areas in NSW, there has to be a balance between much needed infrastructure and preservation
105.	Apr 27 2010	eddie sheridan	raby	

Scenic Hills Petition - Attachment B

106.	Apr 27 2010	Matt Limbrey	Varroville	To put something like this near a school with over a 1000 students and close to a heavily populated residential area is incredibly hard to believe.
107.	Apr 27 2010	Patrick Rae		
108.	Apr 27 2010	Sheila McLean	Ingleburn	A gas extraction plant is not appropriate for this protected area!
109.	Apr 27 2010	Mark & Vi	Raby	We strongly oppose to the scenic hills being destroyed by AGL & a truck stop. Shame on the people who have the upper hand on this matter. Property value, lifestyle and the health of the next generation should be considered! We moved into this area for its beauty!
110.	Apr 28 2010	Renee Ghali	Eagle Vale	Dont let our beautiful area be runted!
111.	Apr 28 2010	Jessica Read-Farrell	Kearns	Leave Scenic Hills alone, leave this area the way it is.
112.	Apr 28 2010	Theresa Moore	Mt Carmel High Schoo	
113.	Apr 28 2010	Joshua Barnes	MCHS	What A stupid idea....
114.	Apr 28 2010	Hannah Bolomey		
115.	Apr 28 2010	brooke Townend		
116.	Apr 28 2010	Catherine Cumming	MCHS	
117.	Apr 28 2010	Tyler Loneragan	Mt. Carmel	I don't want a gas plant ruining this area!
118.	Apr 28 2010	Karlene Galiluyo	MT Carmel Highschool	
119.	Apr 28 2010	Roisin Robinson	mt carmel	
120.	Apr 28 2010	Shanine Pineda	Mount Carmel H.S	LEAVE THIS AREA ALONE!!!!!!
121.	Apr 28 2010	Jennifer Hambly	MCHS	Leave the Scenic Hills alone
122.	Apr 28 2010	Briana Hurst	mount carmel high	
123.	Apr 28 2010	Therona Govender	Mount Carmel High Sc	Please leave Scenic Hills alone. Do not ruin the area. Consider the future generation.
124.	Apr 28 2010	Lincoln Matahau	Mount Carmel High	Save the hills please
125.	Apr 28 2010	Brittany Moores	MCHS	LEAVE SCENIC HILLS ALONE!!! DO NOT RUIN THE AREA!!! YOUR MAKING CAMPBELLTOWN UGLY! COSIDER THE FUTURE GENERATION. !!! please=]

Scenic Hills Petition - Attachment B

126.	Apr 28 2010	Sabrina Seghabi	MCHS	LEAVE SCENIC HILLS ALONE!! do not ruin the areas considered future generation..
127.	Apr 28 2010	Gladys Andrea Regala	MountCarmel High	
128.	Apr 28 2010	Jaime Hallett	Mount Carmel High	
129.	Apr 28 2010	David Fakhouri	Mount Carmel HS	LEAVE SCENIC HILLS ALONE don't ruin the area consider the future generation!!!!!!!!!!!!!!
130.	Apr 28 2010	Evan Hunter	Mt Carmel High	Don't mess with our school!
131.	Apr 28 2010	Joshua Petrinovic	Mount Carmel H.S	Dont mess with our School!
132.	Apr 28 2010	Uriel Manuel		
133.	Apr 28 2010	Kevin Farrow	Mt Carmel High Schoo	
134.	Apr 28 2010	Katie	Mtcarmel High School	
135.	Apr 28 2010	christopher ganem	mount carmel high	DONT MESS WITH OUR SCHOOL
136.	Apr 28 2010	Daniel Foster	Mount Carmel High	Save the hills.... It will effect later generations LEAVE IT ALONE!
137.	Apr 28 2010	billy mcgiggin.	mchs	Heartless=
138.	Apr 28 2010	Nicola Brown		
139.	Apr 28 2010	Georgia Serrano	Mount Carmel High	
140.	Apr 28 2010	sam gale	Mt Carmel HighSchool	I DO NOT WANT A GAS PLANT AROUND MY SCHOOL NO WAY !! LEAVE SCENIC HILLS ALONE !! CONSIDER THE FUTURE GENERATION OF KIDS IN THIS AREA !!
141.	Apr 28 2010	Shane Menezes	Mt Carmel High Schoo	
142.	Apr 28 2010	Jonathan Ronquillo	Mt Carmel	
143.	Apr 28 2010	Thomas Smith	Mount Carmel HS	
144.	Apr 28 2010	Nathalie Kelibitaka	Mount Carmel H.S	Please leave Scenic Hills alone.
145.	Apr 28 2010	Dean Wilkins	MCHS	

Scenic Hills Petition - Attachment B

146.	Apr 28 2010	Simone Pitterling		
147.	Apr 28 2010	Taylor Stanekovic	Mt Carmel High	
148.	Apr 28 2010	Jessica Farrow	Mt Carmel High School	
149.	Apr 28 2010	Salote Alone	Mt Carmel High School	Save the scenic hills! for our sake:)
150.	Apr 28 2010	Layla Longam	Raby	Stupid idea.....
151.	Apr 28 2010	Bradley Hayes	Mount Carmel High	
152.	Apr 28 2010	Rebekka Reyes	M.C.H.S	ManN... leavee the SCENIC HILLS alone!! GOSHH.. I'm so CUT noww!
153.	Apr 28 2010	Jodie Hallett	Mt Carmel Highschool	
154.	Apr 28 2010	James Rutland	Mount Carmel High	
155.	Apr 28 2010	David Straney	kentlyn!!!	do not add a gas plant. it will kill us. we will not be able to learn to our full potential. :) is what we want not :(
156.	Apr 28 2010	Mary Manlapaz	St Andrews	how could you be so heartless ! :(
157.	Apr 28 2010	Max Herdar	Ingelburn	Leave it alone
158.	Apr 28 2010	Mohammed Lakhia	Israel	Allah Akbar!
159.	Apr 28 2010	Connor Walker	Mount Carmel HS	Shame on you Gas company Build else where
160.	Apr 28 2010	Theresa Serrano	Mount Carmel High	
161.	Apr 28 2010	Sheradan Stanekovic	Mount Carmel HS	Don't Distract our learning.
162.	Apr 28 2010	Georgia Stanekovic	Mount Carmel HS	Save scenic Hills
163.	Apr 28 2010	emily beggs	kearns	peace save the trees dude :) I strongly object to AGL development. They should leave nature the way it was meant to be .Leave scenic hills alone. YOU HAVE NO SOUL ! >:(
164.	Apr 28 2010	Erin Scanlon	Mt carmel high	

Scenic Hills Petition - Attachment B

165.	Apr 28 2010	Chelsea Cleary	Mt Carmel H.S	
166.	Apr 28 2010	Ronald Estepa	Mt Carmel School	<p>Firstly, It is called the 'Scenic' Hills for a reason. It wouldn't be very scenic if there was a Gas Plant situated in those hills.</p> <p>The community of Mt Carmel is 100% against the proposed Gas Plant and I am certain that the various communities of the area are against it as well.</p> <p>Ultimately, the Proposed Gas Plant will affect the student's health which will eventually disrupt their Education, and education is key.</p> <p>This does nothing but harm, for the area of Varroville, the Scenic Hills and Campbelltown. It is just placed in an inappropriate area.</p> <p>As a parent,i oppose the plans as it will greatly impact upon the area of Mt carmel school</p> <p>Please don't let development happen in this beautiful area. Seeing the green hills make you feel that you don't live in a big city.</p>
167.	Apr 28 2010	carol miller	varroville	
168.	Apr 28 2010	Amanda Macrae	Raby	
169.	Apr 28 2010	christina lesa	mt carmel highschool	
170.	Apr 28 2010	Marie	Canoy	
171.	Apr 28 2010	Lauren Rice	mt carmel highschool	don't build a gas plant, because it will affect us, leave us and scenic hills alone!!
172.	Apr 28 2010	Kaitlyn Marriott	Mt Carmel High Schoo	
173.	Apr 28 2010	paul canoy		
174.	Apr 28 2010	rachel bryant	mount carmel	pleeeeeeeeeeeassee don't :)
175.	Apr 28 2010	Bridget Brunero	Mount Carmel	
176.	Apr 28 2010	Don Aldak	mt carmel high skool	helloo , shame on you , you have no souls (gingers)
177.	Apr 28 2010	spongebob		
178.	Apr 28 2010	Dillon Reyes	MCHS Marist	I disagree with the building of this plant.
179.	Apr 28 2010	Kyle Craig	Mt Carmel HighSchool	I WANT TO BREATHE CLEAN AIR! i am ashamed of you
180.	Apr 28 2010	Martyn Reyes	Mt Carmel	not cool guys, not cool.

Scenic Hills Petition - Attachment B

			Chantelle Thompson	HighSchool	PEACE
181.	Apr 28 2010		Chantelle Thompson	Mount carmel	PEACE
182.	Apr 28 2010		Gabriel Puglia	Mt Carmel High Schoo	I strongly support this petition due to the fact that I do not want the air pollution of Campbelltown to increase any more than it is. This will therefore cause harm to the high amount of asfhmatics in the Campbelltown area.
183.	Apr 28 2010		Sarah Chavolla	Mount Carmel	Save Scenic Hills. Don't disturb our learning. Without a doubt, when the people who are planning to build this were getting their educations, no one was disturbing them so why take our rights on learning without distractions?
184.	Apr 28 2010		Amy Bonello	Mount Carmel	How cruel !
185.	Apr 28 2010		Anna Calado	MCHS	you're taking my breath away.
186.	Apr 28 2010		Daniel Lawrence	Campbelltown	
187.	Apr 28 2010		Stan Gandera	Eagle Vale	Protect our Scenic Hills, stop polluting the air we breath.
188.	Apr 28 2010		Jordan Wrice	MCHS	It's a horrible idea, build it somewhere where there are no school children and think of the community. Please stop now!
189.	Apr 28 2010		BRN	MCHS	We must preserve the environmental and historical values of this area.
190.	Apr 28 2010		Roger Smith	Campbelltown	
191.	Apr 28 2010		R. Freeman	Raby	I have lived in Raby for over 20 years, and truly value the greenery we are so privileged to have! I live in close proximity of the hills, and am saddened to think that through Politicians (who don't live in the area) that they could contemplate such infrastructure! I enjoy this area as it is away from all the hustle and bustle of City life! People are raising their kids here, there is a school nearby, this is just ludicrous! I could only imagine that medical expenses would increase due to people becoming sick from all the pollution! Please don't ruin our area through ignorance and money!
192.	Apr 28 2010		Anthony Flint	Camden	
193.	Apr 28 2010		Carleena Robinson	CAMPBELLTO WN	no way !!
194.	Apr 28 2010		Danielle Johnson	Mount Carmel High	SAVE THE TREES ! (:
195.	Apr 28 2010		Sr. Catherine Teo	Campbelltown	
196.	Apr 28 2010		Astrid Gleeson	Mt Carmel High Schoo	Emissions from the treatment plant are harmful to people with asthma and other respiratory illnesses. Mt Carmel High School is close to the proposed site. We have students with asthma. A Heavy Vehicle Rest Area will lead to a lot of vehicular noise close to a school.
197.	Apr 28 2010		Kylie Langham	Raby	Nooooooooo

Scenic Hills Petition - Attachment B

198.	Apr 28 2010	Sam Langham	Raby	Save the Hills!!
199.	Apr 28 2010	L Heather	Ambarvale	
200.	Apr 28 2010	Heather Munro	Northmead	This is a beautiful area and close to a large Catholic High School and soccer fields not to mention housing.
201.	Apr 28 2010	Evan Jones	MCHS	get lost!!!
202.	Apr 28 2010	tyler mcgarrrity	MCHS	no way!!!
203.	Apr 28 2010	zac mcgarrrity	MCHS	nooooooooo!
204.	Apr 28 2010	paul megroin	MCHS	why!
205.	Apr 28 2010	Janette Smith	Raby	Leave the Scenic Hills the way they are: scenic
206.	Apr 28 2010	David Ronald Murray	Wollongong	These are clearly inappropriate developments for this area
207.	Apr 28 2010	Christine Hogarth	Bradbury	The impact on the population and the environment would be devastating if approval is given for this infrastructure. The Campbelltown area is already too polluted!
208.	Apr 28 2010	Simone Bowskill	Wentworth Falls	This is typical of our state Government ie allowing development in an area which should be protected as a curtilage to an historic building. Also there should not be development in these areas on the fringe of Sydney it is just extending the urban areas further out.
209.	Apr 28 2010	Jason Shoebridge	Mt Carmel High Schoo	
210.	Apr 28 2010	Eliza Gates		
211.	Apr 28 2010	Nancy Fox	Mosman NSW	I wish to preserve Scenic Hills as it is under the LEP!
212.	Apr 28 2010	Melissa Brown	Woodbine	These developments are not welcome. Such should be considered for unpopulated areas where no protection orders exist. The Macarthur it appears has turned into a dumping ground for developments that would not be accepted in Sydney areas. Macarthur residents love that untouched nature exists in our region. Please stop spoiling it.
213.	Apr 28 2010	a gale		A TRUCK STOP A GAS PLANT WHATS NEXT FOR RABY ???
214.	Apr 28 2010	Murray John Hook	Pennant Hills	
215.	Apr 28 2010	Karel Stark	Bow Bowing	We love this piece of countryside. This is why we moved here years ago. We simply didn't want the city at our doorstep. A Gas plant - well that's just ridiculous in Scenic Hills considering that it has an environmental protection act. What about the impact to the local schools and residents? Our local children attend this school. dont put that gas thing even close to us the gases can make us sick and stuff im not happy about this
216.	Apr 28 2010	Kieran Murphy	woodbine	
217.	Apr 28 2010	Jayden Kennedy	Kearns	
218.	Apr 28 2010	Jake Docen	Campbelltown	This Gas Plant is going to affect many aspects of scenic hills life not only will it effect the environment the

Scenic Hills Petition - Attachment B

					animals and people especially Asthmatics in which marcarthur boasts the most in australia. This is a project driven by greed and is unnessacery. Truck stops roads and gas plants will destroy everything. I say no because it's a stupid idea to waste such beauty
219.	Apr 28 2010	rachael Buxton	campbelltown		DON'T DO IT!!
220.	Apr 28 2010	Johnny John	Everest		you serious you crazy dayam thats whack s***
221.	Apr 28 2010	Michelle Brown	Campbelltown		leave it alone
222.	Apr 28 2010	Stefan Vergara	Ingleburn		
223.	Apr 28 2010	Michelle Clarke	Eagle Vale		
224.	Apr 28 2010	Hayden Polatos	Ingleburn - MCHS		WTF R U THINKING! right near a school r u crazy dont even think about it its ridiculous.
225.	Apr 28 2010	Jane Tarran	Clovelly / Sydney		The proposed developments by AGL and the RTA are clearly inappropriate in the Scenic Hills region. They are contrary to the Campbelltown LEP and will impact severely on local people and visitors alike. Why do we go through extensive, rigorous and valid planning processes, only to have these overturned at the whim of the State Government?
226.	Apr 28 2010	Drina Maneze			
227.	Apr 28 2010	Elise Blight	MCHS		Stop harming the environment!!
228.	Apr 28 2010	Martin Farrell	Bow Bowing plumbing		Why does man always chase the dollar . I would like to see a place were kids can see how life is different with animals and country life instead of a life of concrete bricks and mortar . so humans now can just breed have another homan that will never see a house or a egg getting laid or soon a tree thank you council
229.	Apr 28 2010	Joanne Godfrey	Eagle vale 2558		
230.	Apr 28 2010	Cynthia Nadai	Lilyfield NSW		I have been to this area. It is a gem. Please DO NOT destroy it by developing the area. We will NEVER be able to recoup it. Thank you
231.	Apr 28 2010	Kim Dunwoodie	Mt Carmel High Schoo		
232.	Apr 28 2010	Michael Edwards	Hornsby		
233.	Apr 28 2010	J.A. Dunlop	Retreatant Mt Carmel		I fully concur with the statement that both these plans will affect the viability of the Scenic Hills region, and the quality of life of the surrounding residential, religious, and heritage communities, thereby degrading the environmental, historic, cultural and spiritual values of the area. Approval for both the AGL project and the RTA proposal should be denied and withdrawn.

Scenic Hills Petition - Attachment B

234.	Apr 28 2010	Maria Lauric	St. Andrews	Please do not make our environment a toxic one. This is a neighbourhood of families, young and old. It is not fair if you go ahead with this; WE WERE HERE FIRST! Councillors, do your job and look after the people who vote and their environment!
235.	Apr 28 2010	mr max wilson	raby	
236.	Apr 28 2010	steven wilson	raby	
237.	Apr 28 2010	kayla wilson	raby	
238.	Apr 29 2010	Marion MacKinnon	Wollongong	It was planned to be the lungs of Campbelltown. It should remain so.
239.	Apr 29 2010	Fergus Fricke	Balmain	
240.	Apr 29 2010	Laura Cann	Mount Carmel High	
241.	Apr 29 2010	Tanushaa Chand	MCHS	We dont need anymore pollution in our country, we already have enough as it is...
242.	Apr 29 2010	Ana-Maria Hufanu	MCHS	We need to save our planet, and not ruin it just because of some persons greed... SAVE OUR PLANET...
243.	Apr 29 2010	raymar nunez	MCHS	nooooooooooooo
244.	Apr 29 2010	Caitlyn Mining	M.C.H.S	
245.	Apr 29 2010	lincoln da has	mchs	mchs says no to that ridiculous plan
246.	Apr 29 2010	Melanie Gong	mount carmel.	
247.	Apr 29 2010	Liza Lim chin	MCHS	
248.	Apr 29 2010	Olivia Serret	MCHS	
249.	Apr 29 2010	Shaun Irwin	MCHS	MC PRIDE. no but seriously...
250.	Apr 29 2010	Erin Romero	Mount Carmel High	
251.	Apr 29 2010	Morgan Keane	Mchs	
252.	Apr 29 2010	bryan Browne		
253.	Apr 29 2010	Hayley Kipling	MCHS	
254.	Apr 29 2010	Rebekah Brunker	MCHS	
255.	Apr 29 2010	Sharni Bonfield	Mt Carmel High	

Scenic Hills Petition - Attachment B

256.	Apr 29 2010	Danielle Lyon	Mt Carmel High School	
257.	Apr 29 2010	Riley Coughlan	mt carmel high school	:D
258.	Apr 29 2010	Ruby Daniel	MCHS	Save us
259.	Apr 29 2010	Georgia Rowe		
260.	Apr 29 2010	Robert Surridge	MCHS	
261.	Apr 29 2010	Chloe Minor	MCHS	
262.	Apr 29 2010	William Humbley	Mt Carmel HS	The fact that the government didn't deny these proposals as soon as they saw where the plant and rest area are planned to be placed. The government says children are the future, and yet they seem to be able to contemplate placing a gas plant and allowing heavy vehicles in close proximity to a school. The area is had enough to get through at peak times, trucks are just going to make it harder. With such a bottle neck, someone will be killed. Trucks and cars don't mix. Just like a gas plant and a school don't mix.
263.	Apr 29 2010	Dios Lacap	MCHS	moooo :)
264.	Apr 29 2010	Elaine Tuigamala	MCHS	WWJD !
265.	Apr 29 2010	Johanna Taylor	MCHS	
266.	Apr 29 2010	Maria Binny	MCHS	NO WAY!
267.	Apr 29 2010	Carolyn Le	Minto	
268.	Apr 29 2010	Caroline Resiak	MCHS	I don't wanna have an ugly gas station in the view of my school! :(
269.	Apr 29 2010	Shane Wells	MCHS High	
270.	Apr 29 2010	Anne Marie Salvacion	MCHS	
271.	Apr 29 2010	Sarah Horan	MCHS	
272.	Apr 29 2010	Emily Holton	MCHS	
273.	Apr 29 2010	Kathryn Murray	MCHS	
274.	Apr 29 2010	Dana Buttigieg	MCHS	WWJD!!!! :p
275.	Apr 29 2010	Adrienne Phillips	Mt Carmel High School	
276.	Apr 29 2010	Paige Mitchell	MCHS	
277.	Apr 29 2010	Eugenie Coronel	MCHS	

Scenic Hills Petition - Attachment B

278.	Apr 29 2010	Alexander Tseng	Mt Carmel	
279.	Apr 29 2010	Shaun Robins	MCHS	it will have an effect on any asthematic people that goes to Mt Carmel or that live in the area
280.	Apr 29 2010	Louise Brunker	MCHS	
281.	Apr 29 2010	Jemma Hallett	Mount Carmel School	
282.	Apr 29 2010	Lochlan Johnston	MCHS	SAVE US!!
283.	Apr 29 2010	Mitchell Baird	Mt Carmel School	With out the green 'Scenic Hills' that provide a sense of clean and fresh air there will be more of a risk coming to school and breathing in the possible toxic gasses that are coming out of the plant.
284.	Apr 29 2010	Sebastian Houbert	Mount Carmel	I don't want to have a gas station near our school because the fumes can be toxic and ruin our health!
285.	Apr 29 2010	Patrick Garcia	MCHS	
286.	Apr 29 2010	Keiran Hallam		
287.	Apr 29 2010	Brie-Anna Byrnes	Mt Carmel HS	Please do not touch scenic hills there is not many places left like this. Do not pollute our air and ruin our school environment. Thank you =)
288.	Apr 29 2010	Rachelle Maitre	MCHS	
289.	Apr 29 2010	Dana Johnston	MCHS	
290.	Apr 29 2010	Tianna Dominiak		
291.	Apr 29 2010	Dylan Muddell		
292.	Apr 29 2010	Ashlee Helene	MCHS	
293.	Apr 29 2010	Kevin Clement	MCHS	
294.	Apr 29 2010	Rachael Johnston	MCH	Don't put the truck gas station near our school because we will than be breathing in pollution and it is not healthy for humans so please do not do it.
295.	Apr 29 2010	Jason Seeney	MCHS	
296.	Apr 29 2010	James Muddell	MCHS	
297.	Apr 29 2010	Katherine Xavier	Mount Carmel High Sc	This is a terrible threat to the air quality and health of our students and teachers. In an area that is already suffering the impacts of urban sprawl, this is certainly a huge hazard for the entire community. We must fight against this.
298.	Apr 29 2010	Daphne Serrano	MCHS	
299.	Apr 29 2010	Emily Nilsson	Mount Carmel High	

Scenic Hills Petition - Attachment B

300.	Apr 29 2010	Ashleigh Brooks	Varroville	I go to Mount Carmel school and i'm here 5 out of seven days of the week and think its a stupid place to put it seeing as that it's a suburban and a place for our animals to graze. Don't build it here!
301.	Apr 29 2010	Samantha Campbell	Mount Carmel H.S	Save Our School!!
302.	Apr 29 2010	Eli Gordon	mchs	
303.	Apr 29 2010	Jake Liwayan	Mount Carmel High	
304.	Apr 29 2010	Kirstie O'Connor	Mount Carmel High	
305.	Apr 29 2010	Eliza Ward	mchs	Yeh what everyone else said:.)
306.	Apr 29 2010	Brenda Tseng	Mount Carmel High	
307.	Apr 29 2010	Matylda Brecz	Mt Carmel HS	DONT TOUCH OUR SCENIC HILLS! The gas station will ruin the air we breathe, and not just around the school. If the government wants to do something good for our community at least ask us what we need!! The gas station will pollute our air and ruin the health of students. We DONT want our grass lands and trees to become a rare sight!! LEAVE OUR ENVIRONMENT ALONE!
308.	Apr 29 2010	rachel Andaira	Eschol park	
309.	Apr 29 2010	Aiden Pershouse	MCHS	
310.	Apr 29 2010	Jackson Spek	MCHS	
311.	Apr 29 2010	Simon Wise	MCHS	
312.	Apr 29 2010	jarred delauneey (;		
313.	Apr 29 2010	Nathan Baird		
314.	Apr 29 2010	Mitchell Bryant	MCHS	
315.	Apr 29 2010	Josh Allen	mchs	meh
316.	Apr 29 2010	Adrian Hropic	MCHS Varroville	
317.	Apr 29 2010	Paige Butler	Mount Carmel High Sc	As a Student of Mount Carmel High School, I think that it will effect our learning and it will also be a loud noise. Plus I like our nature and if it is there than it will effect the trees and it will be hard for us to get oxygen and we need the trees to breath
318.	Apr 29 2010	Jason Ruasol	MCHS	
319.	Apr 29 2010	maria alfaro-	mchs	

Scenic Hills Petition - Attachment B

		ramirez		
320.	Apr 29 2010	Brandan Clothier	MCHS	hundreds of Athsmatics in the area will suffer, including me. Think of citizens of our area. The population of the area will suffer. Campbelltown will have no benefits because most likely the gas will be shipped to China etc. Is this the Australia you want? A place where no one wants to go? Global warming will not cease if this continues. Please stop. We don't want people breathing polluted air. It could be hazardous for the people in the area and for our future generations. WE DON'T WANT A GAS PLANT IN OUR AREA!
321.	Apr 29 2010	Rainier Reyes	MCHS	
322.	Apr 29 2010	Sophia Curtain	Mount Carmel	
323.	Apr 29 2010	Jarred Delauney	MCHS	
324.	Apr 29 2010	David Chacon	MCHS	This gasplant should not be allowed to be built as it could affect people at our school.
325.	Apr 29 2010	Emily McCarty	MCHS	
326.	Apr 29 2010	Chris Gavin	MCHS Varroville	:(':(
327.	Apr 29 2010	jarrod hansen	MCHS Varroville	
328.	Apr 29 2010	Jarrod Kemp	MCHS	
329.	Apr 29 2010	Elle Georgiou	MCHS	:(':(
330.	Apr 29 2010	Lincoln De Haas	Varroville	DONT DOG OUR SCHOOL. THINK OF THE FUTURE.
331.	Apr 29 2010	Tessa Docen	MCHS	
332.	Apr 29 2010	Demi Villareal	MCHS	No thankyou. :(
333.	Apr 29 2010	Shane McAneny	MCHS	As a student of Mt Carmel i believe that this would affected the education for students In MCHS!
334.	Apr 29 2010	Raymar Nunez	MCHS	this is shocking! Dont u dare do this!
335.	Apr 29 2010	Therese Pace	MCHS	DON'T DO IT! :(IT STUPID TO KILL OUR ENVIRONMENT!!!!
336.	Apr 29 2010	Isuru Perera	MCHS	this is really bad 4 the environment and 4 our education.
337.	Apr 29 2010	Braiden Buttigieg	MCHS	Your ruining the air that we breath !
338.	Apr 29 2010	Joelle Paco	Mt Carmel High	
339.	Apr 29 2010	Jerome Morgan	Mt.carmel high	!!!STOP THE GAS PLANT!!!

Scenic Hills Petition - Attachment B

340.	Apr 29 2010	Caera Ebonia	Mount Carmel High	That's a pro place don't close it. They'll fail the environment :O~! The scenic hills is a special place with special memories ; If they close it where can we ride teh horses!! :O They will also polute the environment! NOT COOL. THAT'S CUT :O :!(
341.	Apr 29 2010	Racquel Paradeza	MCHS	omygulay. D: the scenic hills are such a pro place. Putting a gas plant there is FAILLLL. :(
342.	Apr 29 2010	Taylor Mahoney	Mchs	GAHH. im cut now. :(
343.	Apr 29 2010	Adem Teope	Mchs	SAVE !!! OUR ENVIROMENT
344.	Apr 29 2010	Erin Plasto	Varroville	-
345.	Apr 29 2010	Joshua Romero	MCHS	Dont think about yourself think about the future 4 our world and think about the animals.
346.	Apr 29 2010	Bianca Ljubnkov	mchs	-
347.	Apr 29 2010	Svitlana Ilkina	MCHS	-
348.	Apr 29 2010	joy-angelo santos	carmel hs	dont touch this
349.	Apr 29 2010	Christal Jeffs	Eschol Park	
350.	Apr 29 2010	bob stevens	kearns	why would they do such a thing ??
351.	Apr 29 2010	Jarrod Kemp.	Mount Carmel	Ur making me cry... :'(
352.	Apr 29 2010	Stephan Mahoney	varroville	Save us and the horses ! and get rid of the gases
353.	Apr 29 2010	Andrew James Burns	Carmel High	please dont touch
354.	Apr 29 2010	Braiden Buttigieg	MCHS	Whats more important? The students of Mt Carmel? or a Gas plant which no one loves...ITS A UNWANTED GAS PLANT !
355.	Apr 29 2010	Jeff Huggo	St Gregs High School	I DONT WANT THEM TO DO IT
356.	Apr 29 2010	Demi Villareal.	MCHS	:(meanies.
357.	Apr 29 2010	Thomas Churchin	MCHS	I also think that asthmatic people will be in danger, and also, if there is a big truck-stop then students at Mt Carmel that get picked up on spitfire drive will not be able to cross the road there, as the trucks will make it dangerous, making the car-park the only viable place to get dropped off and picked up, and it is already crowded.
358.	Apr 29 2010	Emma Forrest	MCHS	
359.	Apr 29 2010	Erin Macrae	Raby	

Scenic Hills Petition - Attachment B

360.	Apr 29 2010	Alison Macrae	Raby	
361.	Apr 29 2010	Ian Macrae	Raby	
362.	Apr 29 2010	Gladys Lane	Padstow	
363.	Apr 29 2010	Gary Lane	South Hurstville	
364.	Apr 29 2010	Tahlia Rubio	Eagle-Vale	I think that it is a bad idea to put an unwanted gas plant near a school.
365.	Apr 29 2010	michelle Scanlon	ingleburn	Think of others but yourself!
366.	Apr 29 2010	Tara Templeton	Mount Carmel HS	i live in ingleburn and i don't want to have this right behind my Daughters school MCHS ! >:(
367.	Apr 29 2010	Sarah Ghanem	Mt Carmel High	THINK OF THE COWS! thats their home !!
368.	Apr 29 2010	Michael Rombi	Eagle Vale/ MCHS	I cant believe that you people would consider putting a gas plant right behind a high school. Students that are asthmatic will be affected greatly !
369.	Apr 29 2010	Michael Hatton	Eagle Vale	We just want a peaceful countryside instead of some huge gas plant in our way! IT'S DISGUSTING!!!!!!
370.	Apr 29 2010	Sarah Colley	Mount Carmel	Think of all us kids that got to mount carmel and how we will all be affected. But also think of what it will do to our lifes... IT IS NOT A GOOD IDEA... SO DONT DO IT
371.	Apr 29 2010	Nicole Jenkins	Mt Carmel	There are way cons then pros with the plan of the gas plant.
372.	Apr 29 2010	Melissa Manjon	Mt Carmel	How would you like going to a school behind a gas plant..?
373.	Apr 29 2010	Aaron Viles	MCHS	I didn't think so. -:-
374.	Apr 29 2010	Lauren Jackson	Mt Carmel	Please don't :)
375.	Apr 29 2010	Aaron Alquillera	Campbelltown	I think that it is bad to have a gas plant behind my school! Because it is bad for all of the people who has asthma is bad for the future of Mt Carmel!! :(It will effect the Mt Carmel Community and people who lives in Raby and St Andrews! :(
376.	Apr 29 2010	Logan Lawson	mchs	this is cruel to the cows and the people who have to put up with smell !! don't destroy the environment, think of the kids and think of the animals... why would you do this to us?
377.	Apr 29 2010	Matthew Manjon	St Andrews	
378.	Apr 29 2010	Damian Hatton	Eaglevale	How about consulting the people who this development will affect rather than the people who will make money out of it?
379.	Apr 29 2010	Benjamin Gilholme	Ingleburn	
380.	Apr 29 2010	Samantha Brown	Blair Athols	

Scenic Hills Petition - Attachment B

381.	Apr 29 2010	warren Normoyle			
382.	Apr 29 2010	Jakob Reh	RTHS		
383.	Apr 29 2010	Nicole Roman	MCHS		
384.	Apr 29 2010	Joshua Putra	MCHS	er..i like cow (:	
385.	Apr 29 2010	matt bradley	BOW BOWING/ MCHS	DON'T ADD ONE! :P	
386.	Apr 29 2010	Emma Reh	St Andrews		
387.	Apr 29 2010	Joshua Reh	St Andrews		
388.	Apr 29 2010	Gale Reh	St Andrews		
389.	Apr 29 2010	Alisha Southwell	MCHS	It will ruin our natural environment :(
390.	Apr 29 2010	Robert Rocela	Mac Fields	THINK OF THE CHILDREN !	
391.	Apr 29 2010	Lee Brown	Blair Athol		
392.	Apr 29 2010	MATT BRAD	MCHS	I LIKE ZE COWS MAN, DON'T KILL ZE COWS MAN! :P :P	
393.	Apr 29 2010	lewis spek	mchs	what if theres a fire ? then mt carmel goes boom, then blood everywhere..so DONT DO IT !	
394.	Apr 29 2010	Rachel Ward	MCHS		
395.	Apr 29 2010	Erin Roach	Kearns/MCHS	Please don't!	
396.	Apr 29 2010	Kirsty Wells	Mt Carmel High	naww. thaats mean):	
397.	Apr 29 2010	Justin Hallam	MCHS	Don't do it!	
398.	Apr 29 2010	Jonathan Ronquillo	Mt carmel	OMG OMG OMG OMG NOOOOO dont do it, i live near there it will be so loud, I need to study think of my friends the cows, lm so sad there's a hole in my heart. I CAN FEEL The pain :(
399.	Apr 29 2010	ben wiggins	st Andrews	WHY WOULD YOU EVEN THINK OF PUTING A GAS PLANT NEAR A SCHOOL! WOULD YOU GO TO A SCHOOL WITH A GAS PLANT NEXT 2 IT???	
				think about it	
400.	Apr 29 2010	Sherree Demillo	mchs	VERYbad!:(
401.	Apr 29 2010	Angela Brown	Blair Athol	Don't you DARE build one!	
402.	Apr 29 2010	sabastion aera	egvale	leave it mtc alone	

Scenic Hills Petition - Attachment B

403.	Apr 29 2010	Lorraine Kaloush	MCHS			A gas plant is not a good idea, having it next to a school is a terrible idea its not WANTED!! Think about the environment and us kids who have to go to school. NO NO NO!
404.	Apr 29 2010	kierah mccue-shore	mtc			vagabond this is repulsive idea
405.	Apr 29 2010	Massimo Lucas	MCHS			I just think that shouldn't happen
406.	Apr 29 2010	LEANNE RUSSELL	BOW BOWING			Please dont destroy one of the last remaining green areas in suburban Sydney. This plant is not wanted in the macarthur area.
407.	Apr 29 2010	Tarni Coughlan	MCHS			
408.	Apr 29 2010	Erika Dillon	MCHS			
409.	Apr 29 2010	Carolyn Said	Camden			
410.	Apr 29 2010	Trevor Gale	Ingleburn			Come on Ms Keneally stop smiling for the cameras and start doing for and listening to the people.
411.	Apr 29 2010	Gina Plate	Chatswood			The rolling pastured hills surrounding Campbelltown, surviving reminders of the agricultural heritage of the district provide a green buffer and sense of open space in an area rapidly developing residential sprawl. This amenity and benefit would be severely compromised by developments recently proposed by AGL & RTA.
412.	Apr 29 2010	Dylan Kaldasaun	MCHS			I f this plant is built the fumes can harm alot of asmatic people
413.	Apr 29 2010	Susan Critharis	Caringbah, NSW			
414.	Apr 29 2010	R. Rose	Campbelltown			Keep the scenic hills for all to enjoy.
415.	Apr 29 2010	Paul Perrin	Raby			The scenic hills at Varroville are in an inappropriate location for a gas extraction plant. An emission-producing plant should not be built near residential areas and schools. These plans should be taken off the table immediately.
416.	Apr 29 2010	Christine Giles	Haberfield			Please do not destroy our heritage. Keep it for now and the future.
417.	Apr 29 2010	Jarrah McCue-Shore	Eschol Park			
418.	Apr 29 2010	Maciej Baczewski	MCHS			
419.	Apr 29 2010	Aniruddha Shinde	MCHS			Stop the gas plant.

Scenic Hills Petition - Attachment B

420.	Apr 29 2010	Andrew Chacon	Mount Carmel	Keep us alive no more pollution for the Macarthur Region
421.	Apr 29 2010	Micahel Russell	MCHS	
422.	Apr 29 2010	Edmond Abdou		
423.	Apr 29 2010	Daniel Maneze	MCHS	
424.	Apr 29 2010	Anthony Lauric	Mount Carmel HS	You are so crazy if you put anything toxic near our homes and school
425.	Apr 29 2010	Damien Lauric	MCHS	
426.	Apr 29 2010	Sandra Templeton	Leumeah	I am very concerned at the plant at the proposal to build this gas plant near MCHS, where my children go to school.
427.	Apr 29 2010	Lauren Templeton	MCHS	I go to MCHS and i dont want to suffer from the pollution
428.	Apr 29 2010	Ivan Templeton	Leumeah	
429.	Apr 29 2010	Andrew 'Mo'	MCHS	There goes Cross Country & the cows.
430.	Apr 29 2010	Craig Freeman	Raby	My neighbours and I are completely against this proposed plan... We have lived in this area for many many years and to think they would do this near our homes is outrageous, not to mention it will be within close proximity of a school is just ridiculous!
431.	Apr 29 2010	Jennifer Barnes	Bradbury	Ridiculous spot for a gas plant, right near the kids school, go build it next to your home instead.....
432.	Apr 29 2010	Ellouise Houbert	ST Patricks college	
433.	Apr 29 2010	Tegan Carter		
434.	Apr 29 2010	Kerry Hulbert		
435.	Apr 29 2010	Emma Powell	MCHS	I do not want a gas plant in varroville because there are farms there which may make the animals on the farms sick and also because i go to school there.
436.	Apr 29 2010	Julie O'Niel		
437.	Apr 29 2010	Eric Houbert		
438.	Apr 29 2010	Timothy Almonte	Mount Carmel	-
439.	Apr 29 2010	Lynda Houbert		
440.	Apr 29 2010	Carmen Wells	Bow Bowling	
441.	Apr 29 2010	Stephanie Speechley	Mount Carmel	Please don't Put a Gas Plant right behind my school!. I would rather see the nature we have around us. not look out the window and see some horrible gas plant. DONT PUT THE GAS PLANT!!
442.	Apr 29 2010	Emily Barlow	Ingleburn	

Scenic Hills Petition - Attachment B

443.	Apr 29 2010	Carole ALLEN	Leichhardt NSW 2040	Our heritage is under threat, our kids will have no sense of place and history. A similar threat of development hovers over Callan Park in Leichhardt. Please Ms Keneally RECONSIDER. Thankyou.
444.	Apr 29 2010	David Allen Gardiner	Maitland	
445.	Apr 29 2010	Ashley Brumec	varroville	
446.	Apr 29 2010	Luke Jackson	Ingleburn	
447.	Apr 29 2010	Michael Jackson	Ingleburn	
448.	Apr 29 2010	Meaghan Ferris	MCHS	
449.	Apr 29 2010	Michelle Jackson	Ingleburn	
450.	Apr 29 2010	chris puglia		
451.	Apr 29 2010	Bradley Mowlam	Varroville, NSW, AUS	Save scenic hills!
452.	Apr 29 2010	Danielle Johnson	MCHS	Save the trees? :)
453.	Apr 29 2010	Abigail Reyes	mchs	please don't put that gas plant behind my school.:(
454.	Apr 29 2010	eliza rankin	australia ruse nsw	think of the cows and that aesthetics
455.	Apr 29 2010	Katie Brown	Mount Carmel High	
456.	Apr 29 2010	Liselle Reyes	Ingleburn	
457.	Apr 29 2010	Janell Mahoney	Eaglevale	
458.	Apr 29 2010	Ashley Mahoney	eaglevale	
459.	Apr 29 2010	Kerri-Anne Rosario	MCHS	no
460.	Apr 29 2010	Margaret Sheppard	Sydney- Varroville	To go ahead with such development as proposed for this area would be disastrous - surely some areas which are beautiful should remain so! Please leave the area alone!!
461.	Apr 29 2010	Chloe Mahoney	Varroville	i do not think that the plant is safe for anyone especially a school environment think of all the lives that could be put in to trouble especially for the ill . As well the environment could be impacted strongly. Overall i feel that there was not enough thought put in to the plan of the gas plant. I feel that we live in a democratic society and we didn't have a right of speech when this plan was thought of. So where is the equality in that.

Scenic Hills Petition - Attachment B

462.	Apr 29 2010	Claire Lincoln .P	home	Dont do it it not right .P	
463.	Apr 29 2010	Veronica Lincoln	?	I don't think it is very safe to have such a thing right next to a school that may have sick children going there and I think this is very bad for the environment.	
464.	Apr 29 2010	John Ferris			
465.	Apr 29 2010	Tyrone Morgan	Raby	the the gas plant now!!	
466.	Apr 29 2010	Andrea Morgan	raby	I don't want a gas plant in our homes and schools.	
467.	Apr 29 2010	Karen Polatos	Ingleburn	My son goes to MCHS and we are moving areas so this wont effect us but still we don't wont our friends and my sons friends to be going to a school near a gas plant it is shameful. You want children to go to school and look out the window to see a gas plant instead of a beautiful scenery you are crazy! you should be ashamed!	
468.	Apr 29 2010	Robert Bennett	Ingleburn	My wife suffers from Asthma. The air quality in the area is poor now and if the proposed heavy vehical rest area and the AGL plant go ahead, the air quality would be worse.	
469.	Apr 29 2010	Victoria Zullo	Eagle Vale		
470.	Apr 29 2010	DW	Minto	its been there forever!	
471.	Apr 29 2010	NathanMckneigh t	MCHS		
472.	Apr 29 2010	Regan Clements	Raby	You people are a disgrace, just think of asthmatics and students of MCHS . This will not just pollute Varroville but suburbs all over Campbelltown. Please NSW government think again say no to the AGL plant	
473.	Apr 29 2010	Chantelle Loo	Campbelltown		
474.	Apr 29 2010	Jodie Hatton	Eagle Vale		
475.	Apr 29 2010	Ken Barnes		it is disappointing to know that the future of our children can be threatened by building this plant.	
476.	Apr 29 2010	Paolo Lingat	MCHS	lol @ genius who thought of building a gas plant and a truck stop next to a school..	
477.	Apr 29 2010	Simon Abernethy	Narellan	The last thing we need in the Macarthur is another pollution emitting industry. The basin air is already a problem.	
478.	Apr 29 2010	Sefine Tevaga	Mount Carmel HS	The AGL Plant should be put somewhere, where no body will get harmed. So, plaese move it somewhere else.	
479.	Apr 29 2010	Kenneth Sunga	Campbelltown		
480.	Apr 29 2010	Romer Balon	Campbelltown		
481.	Apr 29 2010	Catherine Balon	Campbelltown		
482.	Apr 29 2010	Nic Vance	MCHS		
483.	Apr 29 2010	Martin Nguyen	MCHS		
484.	Apr 29 2010	Ronette Reyes	mount carmel	So much for preventing global warming and climate change.	

Scenic Hills Petition - Attachment B

			jenny wells	high	
485.	Apr 29 2010		jenny wells	grenfell 2810	Urgent call from grandson who attends Mt Carmel School at Varroville to sign this petition as school area will be affected
486.	Apr 29 2010		Demi Villareal..	MCHS	NOT NICE !
487.	Apr 29 2010		jim wells	grenfell 2810	
488.	Apr 29 2010		Chloe Young	mchs	
489.	Apr 29 2010		jan Ebonia	mchs	
490.	Apr 29 2010		theo loucanaris	melbourne	
491.	Apr 29 2010		Kathleen Hutcheson	Macquarie Fields	
492.	Apr 29 2010		Tim Hart	Kearns	
493.	Apr 29 2010		Kris Hall	Blue Bay	
494.	Apr 29 2010		Meghann Clarence	Raby, NSW	
495.	Apr 29 2010		Rodney Kennedy	Campbelltown	Health is more important! Find a better way!
496.	Apr 29 2010		Renee marshall	The oaks	Save scenic hills!! We don't need anymore air pollution around mt Carmel a's we already have ingulburn industrial area!!
497.	Apr 29 2010		Jarrod Stephenson	Raby	its to close to my school of mount carmel and my house
498.	Apr 29 2010		Melissa Pennington	Campbelltown	
499.	Apr 29 2010		Sarah Moore	Perth	
500.	Apr 29 2010		Megan pilon	Campbelltown	
501.	Apr 29 2010		Courtney cox	Campbelltown	I went to school at mt Carmel. Don't kill the environment, the community and the school spirit through building gas wells. It is NOT worth it!
502.	Apr 29 2010		Emma-Kate Hewitt	Sydney	
503.	Apr 29 2010		John Geitz	campbelltown	
504.	Apr 29 2010		Yaeun Hah		SAVE THE EARTH (:
505.	Apr 29 2010		Sarah Awad	Eaglevale	*sadface :(
506.	Apr 29 2010		Dana Buttigieg :)	MCHS	WHY WONT YOU PLEASE THINK OF THE CHILDREN

Scenic Hills Petition - Attachment B

507.	Apr 29 2010	Joelle Paco.	Campbelltown	This gas station thing isn't really going to do any of us good so there isn't really a point in building one. We have diseases and poverty and all those bad things in the world to worry about and so we don't need this affecting our lives as well.
508.	Apr 29 2010	Anthony Mackett	Parramatta	Environmental and community protection should be top priority.
509.	Apr 29 2010	Fred Quish	sydney :)	wat everyone else said !
510.	Apr 29 2010	Jenna Buttigieg	Campbelltown	The gas plant could have implications for our school, Mt Carmel, which is also located in Varroville.
511.	Apr 29 2010	Gregory Burke	Varroville	We need to protect our natural, cultural and historical heritage. If the Scenic Hills area is destroyed it will undermine the retreat centre the Carmelites have run here for 46 years.
512.	Apr 29 2010	Tahnee McHutchison	Macquarie Fields	I go to Mt Carmel High School & building this plant is absolutely stupid ! Hopefully they stop it, it would be such a shame to ruin such beautiful scenic hills !
513.	Apr 29 2010	Joshua Pereira		
514.	Apr 29 2010	Jessieeee (:	RABY !	thats mean ! - -
515.	Apr 29 2010	Jessica Solah	Eaglevale	
516.	Apr 29 2010	Dev Sharma	Ingleburn	DO NOT BUILD THIS GAS PLANT !
517.	Apr 29 2010	Brenton McKnight	Minto	
518.	Apr 29 2010	Kirstie Cantrill	Ingleburn	
519.	Apr 29 2010	Claire Fenn	Campbelltown	
520.	Apr 29 2010	Joshua Kemmis	Raby, NSW	
521.	Apr 29 2010	Emma Lynn		
522.	Apr 29 2010	Kristy O'Donnell	Australia	
523.	Apr 29 2010	David Robert Edwards	Ingleburn	That's appalling :(The Brothers and Nuns have land there :(
524.	Apr 29 2010	Elizabeth Hogan	Mount Carmel HS	Don't build it!
525.	Apr 29 2010	Amy-jo Kennedy		:D
526.	Apr 29 2010	Yasmine M. Young		I am an ex-student at Mount Carmel and loved the scenic hills around there. To build a gas plant so close to a school will not only keapordise the air around the school and affect the kids, but also remove the farmland from their natural habitat. Also, watching the cows during classs is a memorable and sacred part of the school, how could you take that away?

Scenic Hills Petition - Attachment B

					When my sister told me I was disgusted1. DON'T DO IT!
527.	Apr 29 2010	Daniel L. Roberts			I don't even go here but my girlfriend did and so does her ister. This is stupid!!
528.	Apr 29 2010	Diana Nagy	Campbelltown		
529.	Apr 29 2010	Emily Baird			
530.	Apr 29 2010	Claire Lucey			
531.	Apr 29 2010	Clay Johnston	Ingleburn		
532.	Apr 29 2010	Hannah Romero	St Andrews		
533.	Apr 29 2010	Les Walters	Newcastle		The noise from the F5 at St Andrews and Varroville is already intolerable...truck drivers constantly use their noisy "Jake Brake" at all hours. To have constant accelerate/decelerate noise in addition will make the Carmelite Retreat Centre un-viable. Please relocate the truck stop to a more remote area. And why has the public been given such little time to comment on the proposal? This seems like a sneaky and smelly strategy to get the deed done before consultation with affected citizens. Disgraceful!
534.	Apr 30 2010	Serena Todd	Mosman		Atrocious, how can you develop this gorgeous area, leave something untouched!
535.	Apr 30 2010	Jacqui Colefax	Leumeah		
536.	Apr 30 2010	Jackie Wall	Bilpin		I have visited the Carmelite Retreat Centre for many years, since it was first opened and love the peaceful atmosphere. To have a truck stop and gas extraction plant in this area will destroy this area and environment. I strongly oppose it.
537.	Apr 30 2010	Lauren Walsh	Ingleburn		
538.	Apr 30 2010	Monique	Snel		It is a beautiful countryside and it should stay like that!
539.	Apr 30 2010	Amanda Binny	St.Andrews		
540.	Apr 30 2010	Lauren Waite	Raby		
541.	Apr 30 2010	Bryan Browne	MCHS		
542.	Apr 30 2010	Jin Kisaragi			The Gas plant will endanger everyone, especially my brother!
543.	Apr 30 2010	Briannon Toogood	MCHS		
544.	Apr 30 2010	Cassandra Stephenson	MCHS		
545.	Apr 30 2010	Cassandra Pink	Minto		Disgusting, Outrageous and Atrocious!!
546.	Apr 30 2010	Karina Calvaresi	MCHS		

Scenic Hills Petition - Attachment B

547.	Apr 30 2010	Dean Stepien	MCHS	:S	
548.	Apr 30 2010	Monic Ballesteros	Ingleburn		
549.	Apr 30 2010	Connor	MCHS		Leave our school alone please why cant you just build one overseas or something i mean i dont care if you build it somewhere else but just not near schools and communitys
550.	Apr 30 2010	Kayla Stephenson	Theresa Park		Moved from Eagle Vale because of developments such as this that take a beautiful landscape and make it an eyecore. If this plan goes ahead, who's to say that more Campbelltown residents will move away also. From an ex MCHS student, I vote no for the gas plant at Scenic Hills.
551.	Apr 30 2010	Christine Jarvis	Camperdown		
552.	Apr 30 2010	Judith McHutchison	Macquarie Fields		
553.	Apr 30 2010	Sabina Fraser	Mt Carmel HS		
554.	Apr 30 2010	Catherine Russe,;			Leave the green belt of the Sceinic Hills as it. We do not need to sacrafice anymore land for industry
555.	Apr 30 2010	Cathy Brooks			Do not allow the gas plant at Varroville. Let us keep what little we have left
556.	Apr 30 2010	John Russell			The Sceinic Hills is a beautiful area. Please don't take this from us. Listen to the residents and not the business people
557.	Apr 30 2010	Cara Frame			No to the gas plant development and truck stop at Varroville. Leave the Sceinic Hills alone
558.	Apr 30 2010	Ann Agnew			Don't allow the development of Sceinic Hills and surrounding Varroville. Let the local community have one of the things they enjoy about the area. We do not want a gas plant
559.	Apr 30 2010	jake robins	raby		find a safer place away from a school- a school which is there to educate students, who are the future people of the world... don't pollute their air....
560.	Apr 30 2010	Bianca Cantrill	MCHS		
561.	Apr 30 2010	Bernadette Romero	St Andrews		
562.	Apr 30 2010	Timothy Romero	St Andrews		
563.	Apr 30 2010	Donna Romero	St Andrews		
564.	Apr 30 2010	Peter Romero	St Andrews		
565.	Apr 30 2010	Megan Bowmer	Mt Carmel		This gas plant is simply ridiculous. The lack of consideration towards the community and our school, as well as the potential health risks which are associated, makes this gas plant a threat to our scenery and residents.
566.	Apr 30 2010	Alexander Manfred	MCHS		
567.	Apr 30 2010	Diana Ibanez	Ingleburn		

Scenic Hills Petition - Attachment B

568.	Apr 30 2010	Robyn Waite	Raby, NSW	
569.	Apr 30 2010	Leona Feiner	Toowoomba	I don't live in the area but visit occasionally. I would be a mistake to disturb the peaceful serenity in the area.
570.	Apr 30 2010	Marcelle Droulers	Bathurst, NSW	I regularly visit the Mt Carmel Retreat centre and I am concerned about its long term viability if noise in the area increased. I believe the presence of the Carmelite community is important for the wider community (ie parish and school) and should be be strongly considered.
571.	Apr 30 2010	Kim Evangelista	Mt Carmel	
572.	Apr 30 2010	Jane Roberts	Ingleburn	
573.	Apr 30 2010	Michael Ross	Blair Athol	
574.	Apr 30 2010	Helen Ross	Blair Athol	
575.	Apr 30 2010	Shami Ross	Blair Athol	
576.	Apr 30 2010	Fay Ross	Central Coast	
577.	Apr 30 2010	Kevin Ross	Central Coast	
578.	Apr 30 2010	Taryn Ross	Raby	
579.	Apr 30 2010	Johl Phillips	Raby	
580.	Apr 30 2010	Leonie Cann	Macquarie Fields	My daughter goes to school right where they are proposing the gas developement. I want my daughter to be able to learn not for her brain cells to be destroy by toxins from a nearby gas plant. Shame On the Government.
581.	Apr 30 2010	Ann Vu	Ingleburn(:	
582.	Apr 30 2010	Lorraine Grout	Ambarvale	South West Sydney has one of the highest rates of asthma in children in NSW. If you go ahead with the gas plant, be sure to be build another hospital as well to cope with the increase in admissions.
583.	Apr 30 2010	Karen Cuthbert	Campbelltown	
584.	Apr 30 2010	Joey Kaenkeo	Rosemeadow	
585.	Apr 30 2010	Angeel Riveraa	Mt,Carmel	Please Don't Takee Away Scenic Hills, :(
586.	Apr 30 2010	Stacey Rivera		
587.	Apr 30 2010	Daniel Rivera		
588.	Apr 30 2010	Kelly Head		
589.	Apr 30 2010	Joshua Rivera		
590.	Apr 30 2010	Andrew Mo	MCHS	This isn't very considerable and smart to what the fellows down at the government are thinking. I reckon they should stop lacking respect.
591.	May 1 2010	Gregory Chee	Varroville	

Scenic Hills Petition - Attachment B

592.	May 1 2010	Darren McMartin	Campbelltown	
593.	May 1 2010	gareth johnston	perth Wa	
594.	May 1 2010	James Rankin	Ruse	I am sure that there are better places to put it - not next door to a high school
595.	May 1 2010	Roxanne Rankin	Ruse	Leave the area alone, both the gas plant and the rest area can go elsewhere
596.	May 1 2010	Keiralea Bennett	Liverpool	The environment is there to look at not to be developed over! Leave it as it is! We already impact on the environment enough and taking over this area to make a new road is a waste of money and trees. If it was up to me, there would be more trees planted and a sign that said 'Private Sanctuary' not 'Knock me down, Im useless'. We need the trees to survive! If people are so damn lazy that they cant stop on the side of the road, then they shouldn't be driving. I am 16 and I say this is completely wrong. I want to go to Scenic Hills and show them what nature is!
597.	May 1 2010	Kat Thornton	Ruse	To have such a loud and dangerous plant close to schools, residents and a spiritual center is disgraceful. I understand all potential advantages for unemployment etc etc. But economics should not rule, the environment and well-being for surrounding residents should take precedence. Can't we just keep some green areas around the area for residents to use and enjoy!?!? I strongly oppose this proposed development.
598.	May 1 2010	Elissah Granger	Campbelltown	This is the kind of thing that will impact negatively on our future, and the future of the next generation. Stop this before we regret it.
599.	May 1 2010	Rachel Win	Guildford	Please do not take away the natural , amazing quiet and serenity of Varroville
600.	May 1 2010	Jessica Mitchell	MCHS	Please listen to the voters because we decide who stays in government. We don't want a gas plant at Varroville.
601.	May 1 2010	Paul Atkins	Raby	
602.	May 1 2010	Helen Atkins	Raby	
603.	May 1 2010	Ray Monds	Raby	
604.	May 1 2010	Mr & Mrs Berigcourt	Raby	
605.	May 1 2010	sandra Walking	launceston, tasmania	this area if of Spiritual significance and a refuge for many people who need respite of the chaotic life they lead.
606.	May 1 2010	Donna Marr	Eaglevale	Great job building gas plants near school & housing smart idea NOT
607.	May 1 2010	Fiona Gow	Annandale	Air quality is too important to be traded away for commercial gain! Please let my niece continue to attend a school in a clean environment!!
608.	May 1 2010	Larry Dolor		
609.	May 1 2010	Dennise Evans	Bow Bowling	A gas plant located within close proximity to a school will have a negative impact on the health and subsequent learning of the pupils at that school. The surrounding suburbs will also be adversely affected by poorer air quality. Company profits should never be put before the health and well being of people.

Scenic Hills Petition - Attachment B

610.	May 1 2010	jodi ginnane	Campbelltown	
611.	May 1 2010	Ian Powell	Ingleburn	I think a gas plant is inappropriate in a urban area as such especially near a school. DONT DO IT!
612.	May 1 2010	Nicole Tate	Campbelltown	
613.	May 1 2010	Stephanie Newman	Sans Souci	
614.	May 1 2010	Kayla Bahn	MCHS	
615.	May 1 2010	sonia resiak	minto	I think that this is wrong I mean in the veiw of a school of 1000 students and more then half of them have asthmatics.
616.	May 1 2010	Jarrad Climpson	MCHS	I don't think a gas plant is a good idea because students with asthma could suffer asthma attacks
617.	May 1 2010	Linda Johnston		
618.	May 1 2010	Mark Climpson		
619.	May 1 2010	Frances Climpson		
620.	May 1 2010	The Busa Family		Our nephew goes to Mt.Carmel and we do not want him to be in an un-safe environment where their is pollution. Also a lot of people will be affected by the noise of the trucks and many kids will suffer from asthma
621.	May 1 2010	Liz& Steve Climpson		
622.	May 1 2010	Jarrad Climpson	MCHS	I would also like to add the negatives of a gas plant near Mount Carmel High School Varroville: Air pollution, natural wild-life endanger, respiratory infections (pneumonia, bronchitis ect.), headaches, nausea, allergic reactions. Long term effects could be: Lung cancer, heart disease and damage to the brain. These are all the negatives that could possibly happen if a gas station is put up near Mount Carmel High School
623.	May 1 2010	Iris Kennedy	Sydney	The region of the scenic hills is a beautiful peaceful place...who would even consider a Gas Plant....please leave us this area to enjoy, and our childrens children
624.	May 2 2010	Kurina-Lein Bautista	mount carmel	
625.	May 2 2010	Justine Binny	St.Andrews	Isn't it ridiculous that such a beautiful area that is home to some majestic horses and amazing flora is going to be destroyed by the implementation of a hideous and environmentally unfriendly gas plant and truck stop? Not to mention that the effects of the expected fumes and pollution (noise, air) will directly effect the church, school and nearby homes. What about Saturday soccer down at Kooringal fields? How can you expect children to play and families to stand and watch whilst trucks breeze past and gas is directly emitted into their environment?
626.	May 2 2010	Mary Whittam	Wynnum Qld	I go frequently to Mt Carmel retreat centre for the quiet and solitude it offers. Please do not disturb this beautiful peace which is offered to many retreatants from all over Australia and the Pacific.

Scenic Hills Petition - Attachment B

627.	May 2 2010	Helen Fisher	Launceston, Tas.	Please consider elsewhere. The Varroville Retreat Centre is a quiet oasis where people have been going since 1964, to refresh their spirits.
628.	May 2 2010	Cynthia Villar	Raby	
629.	May 2 2010	Marcelo Villar	Raby	
630.	May 2 2010	bianca slight	burwood	
631.	May 2 2010	Therese Soufer	Pennant Hills	
632.	May 2 2010	Lee Cloran	Raby	We love the scenic hills and want them to remain an untouched environmental oasis in an ever encroaching commercial world.
633.	May 2 2010	Kevin Cloran	Raby	I strongly object to these proposals, which I consider to be environmental vandalism. The impact on the local population and flora and fauna will be devastating.
634.	May 2 2010	Jane and Lucy Hoare	Raby	
635.	May 2 2010	Bernadette Nehme	Ingleburn	
636.	May 2 2010	Daniel Ghanem	Ingleburn	
637.	May 2 2010	Carla Moseley	Campbelltown	Strongly against!!
638.	May 2 2010	Sean McManus	Melbourne, Victoria	I have visited the Varroville area and note the number of places for spiritual retreat and restful contemplation that have existed for a long time. It would be a pity to allow these projects to substantially change the nature of the area.
639.	May 2 2010	ashwin mathew	bow bowling	
640.	May 2 2010	Monica Nevada		
641.	May 2 2010	Cedric Rebello	St. Andrews	As it is Campbelltown has one of the highest rate of Asthma. Putting both the Gas plant & the "Truck rest stop" so close to Mount Carmel school & the surrounding suburbs will affect the health of children & the residents . This will also destroy the only "Scenic Hills" surrounding Campbelltown. Please listen to community concerns.
642.	May 2 2010	Siobhan Markus	St.	
643.	May 2 2010	Timothy Rouen	Bradbury	
644.	May 3 2010	lindy anne scanlen	sydney	
645.	May 3 2010	Ruth Kunde	St Andrews	Hands off the lungs, views and "sanity space" of the south west!
646.	May 3 2010	Mark McDermott	Varroville	
647.	May 3 2010	Amanda Dionysopoulos	Raby	Absolutely disgusted this is even being considered in this location. This is an election issue for me, my support of the Labour Party will be removed if this goes ahead.

Scenic Hills Petition - Attachment B

648.	May 3 2010	Paige Butler	MCHS	STOP THE GAS PLANT	
649.	May 3 2010	Carmel Roma	St Andrews		
650.	May 3 2010	Kevin Petherbridge	Thornleigh		
651.	May 3 2010	simon thomas hendry	raby		
652.	May 3 2010	Dale Rivera	Mount Carmel H.S	Stop the Gas Plant... think about nature! and also the people who live near the area.. please listen.....we don't want the gas plant.	
653.	May 3 2010	Ryan Rivera	Mount Carmel H.S	DO NOT BUILD A GAS PLANT NEAR MY FUTURE SCHOOL..IT IS BAD FOR MY HEALTH AND STUDENTS.....DO NOT DO IT!	
654.	May 3 2010	Jeannine Ashton	St Andrews	I wish to voice my concern about potential plans for a gas extraction plant and heavy vehicle resting bay in the area of Varroville and the Scenic Hills. I do not believe that they are a suitable location and would greatly disrupt the neighbourhood and surrounding areas.	
655.	May 3 2010	Adrian McHarg	Minto	DON'T YOU EVEN THINK ABOUT BUILDING A GAS PLANT IN OUR VALLEY!	
656.	May 3 2010	Stephen Bullock	Blair Athol	Typical from a Labor Government!	
657.	May 3 2010	Leslie Sitjar	Five Dock		
658.	May 3 2010	Andrew Ang	Five Dock		
659.	May 3 2010	Loretta Brinkman	Woodbine		
660.	May 3 2010	emilia socorro	varroville		
661.	May 3 2010	sam socorro	varroville		
662.	May 4 2010	Tracy Patterson	Raby	I cant sleep now with the truck noise, I dont need any more.	
663.	May 4 2010	Brad Patterson	Raby		
664.	May 4 2010	Marco Valenzuela	Minto	Pls build somewhere - not close to a residential area.	
665.	May 4 2010	Lisa Gabin	Raby		
666.	May 4 2010	Dianne Smith	St Andrews	Labor Government at it again, as they think this is a safe seat for them.... Think about someone else standard of Living other than your own.	
667.	May 4 2010	Aileen Rigor	Bow Bowling		
668.	May 4 2010	Harold Roma	Riverwood	I grew up in St. Andrews and I don't want to see Scenic Hills destroyed. And the M5 is noisy enough without a Truck Stop.....We don't need it....	

Scenic Hills Petition - Attachment B

669.	May 4 2010	Warren Roma	Macquarie Links	
670.	May 4 2010	Dominic Wong	St Andrews	
671.	May 4 2010	Ron Reyes	Raby	
672.	May 4 2010	Roselle Reyes	St Andrews	
673.	May 4 2010	Bailey Reyes	St Andrews	
674.	May 4 2010	Andrew Fricot	Bow Bowing	Please put these further away from our residential areas as our areas are renowned for their tranquility and greenery.
675.	May 4 2010	Anthony Muscat	Bow Bowing	
676.	May 4 2010	Luke Stuart	Rosemeadow	
677.	May 4 2010	Bianca Heuvel	St. Andrews	
678.	May 4 2010	Laura Ainsworth	Campbelltown	
679.	May 4 2010	Kate Cornell	Campbelltown	
680.	May 4 2010	Tim Manns	Kearns	
681.	May 4 2010	Ruth Pirie	Macquarie Fields	
682.	May 4 2010	Brendan Pirie	Macquarie Fields	
683.	May 4 2010	Mrs M Earle	24 Corsair St, Raby	opposed to the AGL proposal, based on health & environment issues
684.	May 4 2010	Stephen Earle	Raby NSW	
685.	May 4 2010	Jonathan Stone	St Andrews	
686.	May 4 2010	Gemma	Edgar	My house has always looked onto the scenic Hills. Building this would be so detrimental to the area. Keep the scenic Hills Beautiful! Wouldnt be very scenic with a power plant there. Or how about we build it in your backyard!!
687.	May 4 2010	Belinda Coves	Raby	
688.	May 4 2010	Emily Frances Hoare	Raby, NSW, 2566	
689.	May 4 2010	Ryan Smith	St Andrews	Isnt Varroville supposed to be a bird sanctuary? what ever happened to preservation? build somewhere else that already has the infrastructure to handle truck size loads. Hmmm i dont know maybe MINTO? INGELBURN? LEAHMEAH? seriously These guys have rocks for brains.
690.	May 4 2010	Celeste Rigor	Bow Bowing	

Scenic Hills Petition - Attachment B

691.	May 4 2010	Ashley Kidson	Glen Alpine	
692.	May 4 2010	Alfonso Rigor	Bow Bowling	
693.	May 4 2010	Aileen Rigor	Bow Bowling	
694.	May 4 2010	Christopher Rigor	Bow Bowling	
695.	May 4 2010	Amanda Guile	Tarrawanna	
696.	May 4 2010	guy abbott	eschol park	please find different area
697.	May 4 2010	Jenni McArdle		
698.	May 4 2010	Julia Eades		I as a student of Mt Carmel am completely opposed to the idea of constructing a gas plant near our school. Our school hosts a range of sporting activities which may be in danger if the plan goes ahead.
699.	May 4 2010	Michael F.		
700.	May 4 2010	Pauline Sabellano		
701.	May 4 2010	Jackson Sabellano		
702.	May 4 2010	Marili Hogan		
703.	May 4 2010	James Hogan		
704.	May 4 2010	Catherine Gardiner	Eschol Park	
705.	May 4 2010	Elise allen	Raby	You are going to destroy a beautiful and rare location. Find somewhere industrial. There is plenty of room, why ruin OUR home environment!!
706.	May 4 2010	Tiana Butler	Eaglevale	My sister is a student at Mount Carmel. It would not be safe for the children at Mount Carmel and around the area of Varroville and I think that it would not be good and it would effect the children with astame and it would be bad for all the people of eaglevale and soon you would not be able to breathe
707.	May 4 2010	Vanessa Torres	Raby	
708.	May 4 2010	Natasha Orioles	Castle Hill	
709.	May 4 2010	Larissa Socorro	Varroville	
710.	May 4 2010	Chloe K	Campbelltown	
711.	May 4 2010	Hang Gilbang	Campbelltown	
712.	May 4 2010	Rohan Markus	St Andrews	
713.	May 4 2010	Stephanie		I have been at Mt Carmel for not even a year and a half. Within the year and the half, the school was fine and

Scenic Hills Petition - Attachment B

		Penales		healthy. If the plant comes, there will be health issues, the plant will be an eyesore. The reputation of Mt Carmel will go down. I love Mt Carmel High school, and I don't want it to be destroyed by the gas plant.
714.	May 4 2010	Steph Smith	Campbelltown	
715.	May 4 2010	Philip Penales		
716.	May 4 2010	Maria Penales		
717.	May 4 2010	Alexander Penales		
718.	May 4 2010	Catherine Penales		
719.	May 4 2010	Marty Grah	Sydney	
720.	May 4 2010	Nathan young	Mount carmel	it will be smelly and stinky with the gas thing! :P
721.	May 4 2010	Josh Charadia	Campbelltown	
722.	May 4 2010	Joshua homery	campbelltown	
723.	May 4 2010	Alyssa Ward	Raby	
724.	May 4 2010	Kate McPhee sm	Haberfield via PNG	The tranquil, spiritual, peaceful and beautiful atmosphere of the hills will be lost. Another part of our beautiful urban country side up for deterioration again. Please put a stop to it.
725.	May 4 2010	Alicia Johnston	St Andrews	
726.	May 4 2010	Sheryl Cimera	Macquarie Fields	The Scenic Hills are part of the rich and important history of Campbelltown. The green belt of the hills is a prized asset to preserve and protect not to exploit and destroy.
727.	May 5 2010	Marcus Properzi	Perth	
728.	May 5 2010	Jeffrey Kantanka	Kearns	
729.	May 5 2010	Katharine Utberg	Kearns	Leave it alone!
730.	May 5 2010	Stephen Whitehead	Sydney	
731.	May 5 2010	matt bradley	bow bowling	we should not have it behind our school because it will ruin kids health and the people who live in Varroville and St andrews could all get sick which could create a new disease and other stuff.
732.	May 5 2010	Angelica Stuart	Raby	Wish to preserve the Scenic Hills region of Campbelltown on the South West outskirts of Sydney as expressed in the Campbelltown Local Environment Plan (LEP) District 8 (Central Hills Lands).
733.	May 5 2010	Irene Russell	Raby	wish to preserve the Scenic Hills region of Campbelltown on the South West outskirts of Sydney as expressed in the Campbelltown Local Environment Plan (LEP) " District 8 (Central Hills Lands).
734.	May 5 2010	Sabina Stuart	Raby	Don't do it!!! Don't ruin our neighbourhood!
735.	May 5 2010	Jim	Raby	Please don't build this here - we are struggling first time buyers looking to get ahead and build a life for our

Scenic Hills Petition - Attachment B

		Dionysopoulos		family. We've invested everything we have in this being a place for our future - don't kill our dream with a gas plant.
736.	May 5 2010	Sherry Veatupu	Minto	Why build all that when Scenic Hills region is a much loved community attraction!! By building roads, gas plants etc, it does nothing but bring more pollution to the air EITHER WAY!!!
737.	May 5 2010	Courtney Levi	Rosemeadow	
738.	May 5 2010	Felicity Sio	Minto	STUPID PROPOSALS! seriously get your heads out off your asses =]
739.	May 5 2010	Lute Taumalolo	Warwick Farm	
740.	May 5 2010	Bonita Castor	MCHS	
741.	May 5 2010	Terry Parkes	Raby	
742.	May 5 2010	Werner Hartmann	Raby	I have been a resident of Raby for the last 27 years and I am totally against the AGLs proposed gas extraction plant at Varroville.
743.	May 5 2010	Christel Hartmann	Raby	I oppose the building of the AGL extraction plant.
744.	May 5 2010	Branka Brumec	Kearns	As a local resident and with children attending Mt Carmel, I strongly object to AGL's development. Move your plant to outback regions where the affect will be minimal.
745.	May 5 2010	Paulette Smit	Ingleburn	
746.	May 5 2010	Jason Smit	Ingleburn	
747.	May 5 2010	Royce Joseph		
748.	May 5 2010	Patricia Joseph		
749.	May 5 2010	Teresita Alivio	St. Andrews	Strongly opposed to these 2 plans. The NSW government would surely have immense responsibility for the adverse consequences on the environment and the residents'quality of life that these projects would inevitably cause and it could be VERY COSTLY. I hope the government will abide by the simple principle "An ounce of prevention is better than a pound of cure".
750.	May 5 2010	carly morgan	glenfield	
751.	May 5 2010	Katey Petrinovic	Raby	My son attends Mt Carmel High. What parent would want their child at risk from simply attending school.
752.	May 5 2010	Jacqui Rowney	Raby	They should keep scenic hills, I am also against AGLs propesd gas extraction plant at Varoville
753.	May 5 2010	David Williams	Raby	
754.	May 5 2010	Tracey Mcdonald	Raby	
755.	May 5 2010	Olivia Ricketts	St Andrews	
756.	May 5 2010	Christopher Vergara	Wentworthville	NO! NO! NO! to both proposals. Leave Scenics Hills alone.

Scenic Hills Petition - Attachment B

757.	May 5 2010	Daniel Parrino			
758.	May 5 2010	Kate Parrino			
759.	May 5 2010	Doug Barclay	mOUNT aNNAN		
760.	May 5 2010	Sarah Locke	Woodbine		. I think it will be a potential health and environment hazard in this heavily populated area. St Andrews and surrounding suburbs are already suffering from the pollution caused by nearby industries especially from Pilkington. The gas extraction plant will make it worse. Also, the area they plan to put it is on the best scenic spot in Campbelltown, the Scenic Hills. The reason why living in this area appealed to us was because of the wide open space and the green hills.
761.	May 5 2010	Louise Yuson	Raby		
762.	May 5 2010	Peter Bounpraseuth	Rosemeadow		
763.	May 5 2010	Carol Properzi	St Andrews		The scenic hills is supposedly a protected area.It is absolutely essential that this status is maintained!!
764.	May 5 2010	Geoff Moss	Wedderburn		Absolutely stupid idea and the minister involved should resign
765.	May 5 2010	Robyn Maddern	Bradbury		No at Scenic Hills ever
766.	May 5 2010	Shane Moss	Wedderburn		Keep away from Scenis Hills, its ours not yours
767.	May 5 2010	Stephanie Moss	Wedderburn		Never
768.	May 5 2010	Raju Devis	Holsworthy		
769.	May 5 2010	Kyle Moss	Wedderburn		Rack off AGL
770.	May 5 2010	Colin Dean	Penquin, TASMANIA		Leave scenic hills alone
771.	May 5 2010	Kay Dean	Penquin, TASMANIA		Leave the scenic hills alone
772.	May 5 2010	Bill Dean	Queenstown Tasmania		NO, not at Scenis Hills
773.	May 5 2010	Coral Baker	Gosford		
774.	May 5 2010	Stephen Baker			
775.	May 5 2010	Michael Smallwood	St Marys		No No No not the Scenic Hills
776.	May 5 2010	Carol Smallwood	St Marys		Never
777.	May 5 2010	Colin Smallwood	St Marys		

Scenic Hills Petition - Attachment B

778.	May 5 2010	Renee Smallwood			
779.	May 5 2010	Alison Smallwood	St Marys		Never ever ever
780.	May 6 2010	Loretta Palmer	Ingleburn 2565		
781.	May 6 2010	Ian Palmer	Ingleburn		
782.	May 6 2010	H Samut	Eagle Vale		Please consider the livelihood of the citizens residing in this location.
783.	May 6 2010	Rhiannon Smith	Narellan Vale		They've got enough property to build somewhere else, and it's an eye sore.
784.	May 6 2010	Rebecca Smith	Narellan Vale		
785.	May 6 2010	Benjamin smith	Narellan Vale		
786.	May 6 2010	Therese Smith	Narellan Vale		
787.	May 6 2010	Daniel Smith	Narellan Vale		
788.	May 6 2010	Nikki McCall	Eaglevale		
789.	May 6 2010	Gloria Divinagracia	Raby, NSW		The Scenic Hills is a protected by an EPA as it affect the quality of life of the surrounding residential, religious, and heritage communities in the area. AGL & RTA should look for areas which will not adversely affect the community where they plan to set their project. Please preserve Scenic Hills, a beautiful & environmentally friendly asset in Sydney Southwest.
790.	May 6 2010	Constance C Hughes	Bradbury		We have lived in Campbelltown for almost 40 years. When we moved here it was promised the Scenic Hills would be always preserved for their benefit of residents and because they were so unique. We have been duped re Leafs Gully and I object to another Plant being built in this area on so many levels
791.	May 6 2010	Richard J Hughes	Bradbury		I endorse everything my wife has already said and would likt to add my strong objection fo the Truck Stop proposed at Varroville by Minister for Transport. Once again this would be a blight on a beautiful part of out town, which is happening far too often.
792.	May 6 2010	Paige Butler	MCHS		Please top the gas plant it is bad for the enviroment
793.	May 6 2010	samantha campbell	Raby		STOPP!! Dont do it please!! Strongly against this whole idea!!!!
794.	May 6 2010	Jessica Garcia	Mchs		Paige meant to say stop the gas plant not to it because it is a bad idea
795.	May 6 2010	Paige Butler	MCHS		please stop ok its sooo bad!
796.	May 6 2010	Kerrie de Haas	Kearns		A gas plant located within close proximity to a school will have a negative impact on the health of the pupils at that school. The surrounding suburbs will also be adversely affected by poorer air quality. Local Council should rule on these projects NOT the State Government.
797.	May 6 2010	Hong Van Tran	Canley Heights		

Scenic Hills Petition - Attachment B

798.	May 6 2010	Sarah Kermode	Bradbury	
799.	May 6 2010	Christine Jacques	Glen Alpine	Leave the hills alone. Once one company gets approval it will be open for everyone, and then we will look like every other town.
800.	May 6 2010	Ramon Calvelo	Macquarie Links NSW	Please leave the Scenic Hills..this is really bad..agree that our Local Council should be the one protecting us from this...
801.	May 6 2010	Sandra Johnson OCDS	Melbourne Victoria	I am totally opposed to the truck stop proposed at Varroville. I and other in my community, attend the Varroville retreat Centre. This quiet scenic area is a valued and special place for many people. Don't spoil this beautiful and quiet area, which is much appreciated and needed amidst our noisy, busy world.
802.	May 6 2010	A De Los Angeles	Ingleburn	
803.	May 6 2010	Nichole Cauchi	Raby	
804.	May 6 2010	Lee Dawson	St Andrews	Dont destroy the little we have left...
805.	May 6 2010	Larissa Sykes	Varroville	
806.	May 7 2010	Barbara Weber	St Andrews	why do you have this urge to fill our last open space with industry/truck stop? we will be affected by both projects. The noise of 30 trucks slowing down to enter the truck stop will not be welcomed.
807.	May 7 2010	paige Butler	eagle vale	stop the gas plant
808.	May 7 2010	Asleigh Sahin	st andrews	stop the gas plant because it is bad
809.	May 7 2010	Tiana butler	Eaglevale	the gas plant is a really bad idea because it is no good
810.	May 7 2010	Eva Albert		
811.	May 7 2010	Geza Albert		
812.	May 7 2010	Lindsay Peters	Eastwood	
813.	May 7 2010	Pat Morris	St Andrews	
814.	May 7 2010	Harold Anderson	Raby	
815.	May 7 2010	Dave Vella		
816.	May 7 2010	Maria Dalecki	Raby NSW	
817.	May 7 2010	Gary Reid	St Andrews	Keep the scenic hills scenic as was promised. If Labour wants to be wiped out so badly at the next State Govt election so they spend years in a political vacuum, then perhaps they might consider the peoples wishes rather than caving in and rubber stamping bad ideas like this.
818.	May 8 2010	Kathryn Dalecki	Glebe	
819.	May 8 2010	Adam Dixon	Keams	Keep Scenic Hills Green .
820.	May 8 2010	cira Robinson	BOw Bowing	We live in a Labor seat, you represent us, please carry out our wishes which is NO to the above propositions

Scenic Hills Petition - Attachment B

821.	May 8 2010	Martin Robinson	Bow Bowling	We would expect a Labor government to be sympathetic to the wishes and needs of people in a Labor seat. Otherwise, why do we vote Labor? The Scenic Hills have come under assault many times in the 30 years I have lived here. Don't let developers and business interests take precedence over the Planning guidelines established for this area. We do not wish to see this proposal become another "State Significant" development as have many proposals in the past. There is no such thing as a "safe" Labor seat and I, for one, have a good memory.
822.	May 8 2010	Jennifer Thompson	Ruse	The Scenic Hills should be left alone. The Scenic Hills are part of Campbelltown and should kept green.
823.	May 8 2010	Logan Lawson	mchs	This is mean to the people that go to mount carmel or for the people who have to go past it every day! I SAY : NO GAS PLANT !!
824.	May 8 2010	Amy Lawson	Claymore	My daughter goes to Mt Carmel High and I dont like the idea of a gas plate being near her High school.
825.	May 8 2010	Mara joy bieber		I WILL ASK THESE PEOPLE 1 QUESTOIN DO U WANT TO BE AN IDIOT?? I DONT STOP THIS IDIOTIC THING AND SAVE THE ANIMALS. WOULD U LIKE TO BE THE ONE WITH THE DEATH OFF THESE ANIMALS ON UR HANDS. AND WAT ABOUT THE HEALTH OFF CHILDREN DO U WANT THEM TO GET SICK. NOO! SOO STOP THIS IDIOTIC THNG AND THINK!!!!
826.	May 8 2010	Elke Cooper	Ingleburn	I have lived in the Ingleburn area for over 20 years. The Scenic Hills are an integral part of our community -- both asthetically and environmentally. They contribute and protect our way of life. It would be criminal to develop them in any way.
827.	May 8 2010	Janet Peacock	St Andrews	Sydney is rapidly losing its green space. The Scenic Hills are a supposedly protected area and must be maintained for future generations to enjoy.
828.	May 8 2010	Paul Robins	Raby	
829.	May 8 2010	Craig Hudson	Raby	
830.	May 9 2010	Rodney Hunter	Campbelltown	The fewer the green buffer zones between local government areas the uglier Sydney will become. There are too many places in Sydney that have been ruined by developers already. Why make the problem worse? The Scenic Hills area must be preserved.
831.	May 9 2010	paul mccleary	st andrews	
832.	May 9 2010	gail mccleary	st andrews	
833.	May 9 2010	tristan mccleary	st andrews	
834.	May 9 2010	angelica roberts	bow bowling	

Scenic Hills Petition - Attachment B

835.	May 9 2010	Elyza Gomez	MCHS	What is happening to our government? 1 VOTE THEM OUT NOW! Our school should be our school & we stand by it until its over....
836.	May 9 2010	Jacob McHutchison	Macquarie Fields	I go to Mt Carmel High School and i dont want to see future generations at Mt Carmel. It is a Stupid plan because the area of Campbelltown is in a basin. Therefore smoke and fumes linger in the air which is highly dangerous. Campbelltown has a high rate of asthma and plans like these are a major contributor
837.	May 9 2010	Alyssa Alberto	MCHS	Please Stop This :
838.	May 9 2010	Michael Colley	St Andrews	
839.	May 10 2010	David Colefax	Castle Hill NSW	respect the monks sacred ground - develop elsewhere
840.	May 11 2010	Hilary Kramer	Ashfield	Why ride roughshod over the local Council's environmental protection zoning? Surely it is an abuse of the Ministers' powers, to let Scenic Hills become an industrial wasteland. Forget the Scenic Hills area and find a suitable site elsewhere.
841.	May 11 2010	Michael Whelan	Lane Cove	The destruction of scenic places and places of quite within our environment is short sighted. We need them for our sanity.
842.	May 11 2010	Robyn Rashleigh	Eagle Vale	Isn't our air quality bad enough already out here? So many of our children have asthma, and adults also have medical issues relating to the "bowl" that Macarthur is, attracting pollution from other areas, as well as the local over abundance of factories.
843.	May 11 2010	Leslie Miller	Glenfield	Which stupid politician had nothing better to do than dream up such a stupid objective as to build a gas plant so close to a school. Any leakage inhaled by pupils could cause serious brain damage to them...thus impairing their learning ability. Apparently the one who thought of this objective has already inhaled some of the gas.
844.	May 11 2010	Brian O'Brien	Campbelltown	The proposal is an insult to the people of this region.
845.	May 11 2010	Nadine Navarro	Bow Bowling NSW	AGL should NOT be allowed to have gas pipelines & extraction in this area which has already high pollution. There will be high gas extraction accidents for residents & high school students in the area. The Scenic Hills allows us to breathe fresh air.
846.	May 11 2010	Apolinario Navarro	Bow Bowling NSW	Say NO! to AGL & heavy vehicle rest area at Varroville and help keep residents in this area healthy. NO to pollution; NO to noise; NO to dangerous gas explosions; and NO to destruction of Scenic Hills and our environment.
847.	May 11 2010	K Navarro	Bow Bowling	NO to AGL gas plant & NO to heavy vehicle rest area near my school (Mt Carmel High School) and church (Mt Carmel Church)....
848.	May 11 2010	Ken Navarro	Bow Bowling	A lot of kids and young people play soccer/football at Koorringa Reserve, St Andrews Rd., Varroville. Let them exercise, be healthy, and enjoy fresh air without the pollution. These kids' lives are important & should not be subjected to risk of gas leaks and explosions.
849.	May 11 2010	Kirsten Navarro	Bow Bowling	NO to AGL. Keep our Scenic Hills area green and clean. Preserve our Scenic Hills environment and our residents' health. Don't let business dictate our lives; business should only be a small part of 'Life'!
850.	May 11 2010	Les Miller	Glenfield	

Scenic Hills Petition - Attachment B

851.	May 11 2010	Grandad	Glenfield	Will the govt supply oxygen masks that drop from the ceiling in the school for the kids to use if there is a gas leak?
852.	May 11 2010	Jim Cullen	Colamon	The Nazis used gas . The State Govt. is using gas to poison the Catholic kids, priests and nuns. Will you pray that there is no gas leak when you go to Mass, Christine?
853.	May 11 2010	George Silis	Bass Hill	The Govt. wants kids to stop sniffing petrol and sniff gas instead.
854.	May 12 2010	Linda Ricketts	Rosemeadow	
855.	May 12 2010	Merle Thompson	Eagle Vale	NO to AGL. Keep our Scenic Hills area green and clean. Protecting our environment and our residents' health is a must not a maybe . Residents welfair must always come first over business Don't let business dictate our lives; business should only be a small part of 'Life!' I am with you Kirsten Navarro
856.	May 12 2010	Tommy Gunn	Gundagaiand we pay these idiotic politicians to do these things.
857.	May 12 2010	Rebecca Kerr	Campbelltown	Please keep the hills the way they are !
858.	May 12 2010	Rodney Hutchinson	Campbelltown	Scenic Hills should be just that
859.	May 12 2010	Brian Elliott	Raby	We do not want a gas plant in our suburb.
860.	May 12 2010	Eddie Brien	Ambarvale	
861.	May 12 2010	Ashlea Ortega	St.Andrews	its stupid!!
862.	May 12 2010	Bailey Beaumont	Raby	
863.	May 12 2010	Michael Jones	Raby	
864.	May 12 2010	Gary Jones	Raby	
865.	May 12 2010	Rebecca Jones		
866.	May 12 2010	Maureen Jones	Raby	
867.	May 12 2010	Renee hollingsworth		
868.	May 13 2010	John Bulmer	St Andrews	Why should we have to put up with increased traffic, more pollution and danger to the environment as well as possible physical danger when the gas company won't even connect our homes to gas when there is already gas lines in the street
869.	May 13 2010	Margaret Bulmer	St Andrews	No!
870.	May 13 2010	Rosemary Christian	Kearns	Do not want a gas plant in our area.
871.	May 13 2010	Jenny Coleman	Menai	
872.	May 13 2010	Ireen Lake	Narellan Vale	Do not want a gas plant in our area

Scenic Hills Petition - Attachment B

873.	May 13 2010	Lisa O'Sullivan	Camden Park	-	
874.	May 13 2010	megan williams	leumeah		
875.	May 13 2010	Scott Ian Briggs	Rosemeadow		
876.	May 13 2010	Renaë Moore	kearns	absolutely outrageous	
877.	May 13 2010	R.Krishnaswamy	Raby	I have a 7 year old daughter with asthma and allergies and a 12 year old son with asthma. I, myself is regular sufferer of hay fever. Any governeemnt, while making decisions, should make sure the quality of life of the citizens are not deteriaoted. The cost paid by the families and the society due to these decisions is too high.	
878.	May 13 2010	Leslie Seach	Raby	the scenic hills must be saved campbelltown area needs the green belt & history of the scenic hills	
879.	May 13 2010	Michael Seach	Raby		
880.	May 13 2010	Cameron Seach	Raby	For my Mum and Dad...	
881.	May 13 2010	Vanessa Case	Rockdale		
882.	May 13 2010	JOHN TOMLIN	BRADBURY	This is a disgrace. We have a State government that governs on behalf of big doner companies, simply ignoring the populace of the state. Companies such as AGL know that they can treat local populations with utter contempt as they will have the full support of this corrupt government. This is a threat to our entire supposed democratic process. The electorate are simply there to be trampled on by this government and its wealthy business mates.	
883.	May 13 2010	Sue Shearer	Bradbury	The Macarthur area has more than enough pollution already. We have the highest figures for asthma and yet this outrageous government makes such a shocking decision without even consulting the people it will affect. This must be stopped NOW!!	
884.	May 13 2010	Stewart Grainger	Campbelltown		
885.	May 13 2010	Lisa Windon	Marrickville	For goodness sake ... can we just retain SOME semblance of recreational space for this city?	
886.	May 13 2010	Carole lane	Camden		
887.	May 14 2010	Kerrie Frew	Leumeah		
888.	May 14 2010	Campbell Heather	Bowral	We dont need more gas to heat mcmanions - we need more people to wear wool and protect the environment. Take heart from the successful petition to halt the Bickham coal mine.	
889.	May 14 2010	Chloe Socorro	Varroville		
890.	May 14 2010	Brenda Hall	St Andrews		
891.	May 14 2010	Melissa Hall	St Andrews		
892.	May 14 2010	Kylie Gutierrez	St Andrews		
893.	May 16 2010	Milton Wearing	Campbelltown		

Scenic Hills Petition - Attachment B

894.	May 16 2010	Narelle Wearing	Campbelltown	
895.	May 16 2010	Warwick Wearing	Campbelltown	
896.	May 16 2010	Maree Reilly	Varroville	I purchased my property at Varroville because of its rural aspect and scenic protect area meaning that the land was protected from development. The Government has no right to change the area's classification.
897.	May 17 2010	Mary Kambouris	Raby	
898.	May 17 2010	Nicholas Kambouris	Raby	
899.	May 17 2010	George Kambouris	Raby	
900.	May 18 2010	Dale Rivera	Glenfield	i am strongly against the whole idea!
901.	May 18 2010	Brett McLachlan	Kearns	i'm part of the Mt Carmel Community and is fighting 100% against this!
902.	May 19 2010	Karen Hunt	Minto	
903.	May 19 2010	Annemarie Doyle	Dalgely NSW	
904.	May 19 2010	Lyn Collin	Rosemeadow	
905.	May 20 2010	Samantha Reid	St Andrews	I would be horrified if the government were to approve such applications in residential areas. Labor has been representing this area for many years... this could be the last...
906.	May 20 2010	Shannon Reid	St Andrews	
907.	May 20 2010	Lachlan Reid	St Andrews	
908.	May 20 2010	sarah toley	raby	
909.	May 20 2010	Donna Dominiak	Bow Bowling	
910.	May 22 2010	Michael Barker	Bow Bowling	
911.	May 22 2010	Dean Sciuto	LIVERPOOL	
912.	May 22 2010	Steph Wand	Campbelltown	
913.	May 22 2010	Kimberly Dixon	Earlwood	
914.	May 24 2010	Steven Benham	Glenfield	
915.	May 25 2010	Sandra Elliott	Ashfield	As a direct link to our colonial past, preservation of the Scenic Hills is vital for the people of Sydney today and for future generations.
916.	May 25 2010	sharon farrell		
917.	May 25 2010	Shaun	Chipping	

Scenic Hills Petition - Attachment B

		Teodorovic	Norton	
918.	May 25 2010	vesna matarugic	campbelltown	
919.	May 25 2010	NATASHA ORIOLES		
920.	May 26 2010	jacqueline seconi	varroville	its a disgrace, keep the hills green. isnt that why they were protected in the first place,
921.	May 26 2010	Kendra Lee Bellamy	Raby	Please leave scenic hills the way it is, SCENIC. It would be good for our kids to see some green hills in the future. Not cement, thanks.
922.	May 26 2010	Nicole Williams	Ruse	
923.	May 26 2010	Elaine Turner	St Andrews	Peaceful, tranquil, and so important to our local community, the Scenic Hills are being ruined by politicians and their stupid plans. Leave this beautiful place alone. We don't want any Business Parks, gas wells or a noisy truck stop. What next? A four lane highway on St Andrews Road? Our property values will decline. Is the government going to pay us for our loss? Of course not.
924.	May 26 2010	Jeannette Dillon	RUSE	Scenic Hills is one of the very few areas left in our once beautiful, peaceful, semi-rural area, please leave us with some green, scenic places instead of the industrial concrete jungle we are fast becoming.
925.	May 26 2010	Filip Szczepanski		
926.	May 26 2010	julie hunt	denham court	
927.	May 26 2010	Anita Riley	Raby	NO NO NO!! to AGL Gas plant and to RTA truck stop!! Our elected representatives should be fighting for the people who voted them in to stop both of these projects which will seriously affect our health and quality of life.
928.	May 26 2010	Krista Dennis		
929.	May 27 2010	Karen Kemp	Raby	Save the Scenic Hills - it's one of the reasons I moved out to Raby from the Sutherland Shire.
930.	May 27 2010	Penelope Sturrock	Cremorne point	People from all over Sydney are interested and support this petition.
931.	May 27 2010	Michael Stubbs	Denham Court	Why take away the rural setting we live in that is why we live here
932.	May 27 2010	Dianne Stubbs	Denham Court	
933.	May 27 2010	Jenelle Stubbs	Eagle Vale	
934.	May 27 2010	Judi Taylor	North Sydney	we have enjoyed the tranquility of this place, so close to Sydney and so necessary to balance our busy lives. Let's keep it thus for all those who will increasingly need it.
935.	May 30 2010	Sandra Denny	Csambelltown	My Grandchild goes to Mount Carmel and I think that is the most worst idea ever and it should not happen
936.	May 30 2010	Kim Butler	Eagle Vale	Don't do it because it is a bad idea and it is going to ruin our beautiful lands and it is so close to my daughters school Mount Carme
937.	Jun 1 2010	Jason Reyes		

Scenic Hills Petition - Attachment B

938.	Jun 6 2010	Andrea Dixon	Paris	I know this place and it should be left alone, as it is
939.	Jun 7 2010	Maree Brown	Paddington NSW	
940.	Jun 8 2010	David Everett	Park Central	The Scenic Hills are Campbelltown's point of difference. Our Council has fought off many developers. Now we get told we don't have any say. A joke. But I guess it is only Campbelltown.
941.	Jun 8 2010	Tanya pal		
942.	Jun 8 2010	Tanya Palmer	Catherine Fields	
943.	Jun 9 2010	Joan Fanning	Varroville	
944.	Jun 12 2010	Sarah Carpenter	Varroville	
945.	Jun 13 2010	Dulcie McGee	Varroville	
946.	Jun 13 2010	Alice Page	Varroville	
947.	Jun 13 2010	Kathleen Page	Varroville	
948.	Jun 13 2010	Patricia Giuliano	Varroville	
949.	Jun 14 2010	Margaret O'Keefe	Varroville	
950.	Jun 14 2010	Alice Mulcare	Varroville	
951.	Jun 14 2010	Gerard Moran	Varroville	
952.	Jun 14 2010	Aloysius Rego	Varroville	
953.	Jun 15 2010	Shane Kelleher	Varroville	"Don't it always seem to go That you don't know what you've got Til it's gone They paved paradise And put up a parking lot" Joni Mitchell
954.	Jun 15 2010	peter dowl	St ives NSW	
955.	Jun 15 2010	Timothy Tierney	St. Ives	I visit Varroville for retreats and have a stake in noise reduction at this site.
956.	Jun 15 2010	Charpentier Monique	Switzerland	
957.	Jun 16 2010	Elizabeth Franks	Varroville	

Scenic Hills Petition - Attachment B

958.	Jun 16 2010	Beatrix Reuter	St Andrews	
959.	Jun 17 2010	Norvin Roma	St. Andrews, NSW	
960.	Jun 17 2010	Cheryl McLachlan	Eschol Park	Always lived in local area and have seen many attempts to claim scenic hills for development. Strongly object to the land grab and deterioration of lifestyle.
961.	Jun 17 2010	Darryl McLachlan	Eschol Park	Live in area and strongly object to any pollutants being inflicted upon us and our children and the devaluation in our land values.
962.	Jun 17 2010	Hamish Wilson	The Oaks	
963.	Jun 17 2010	Stan Glaser	Roseville NSW	
964.	Jun 17 2010	Lyn Glaser	Roseville NSW	
965.	Jun 17 2010	Jacqueline newling	leichardt, NSW.	I work in a heritage organisation and firmly believe that we are the custodians of our history & heiritage. If we do not value and preserve it, we compromise our cultural identity for future generations. JN
966.	Jun 18 2010	Peter Lewis	Roseville, NSW	
967.	Jun 18 2010	Chris Lewis	Roseville, NSW	
968.	Jun 18 2010	Joanne Ford	Sutherland	
969.	Jun 21 2010	Clarice D. Stretch	Campbelltown	This is an historic area with the land grant of Varroville, a protected area of Scenic Hills and this development will impact on residential homes, schools and the Catholic retreat. It will also have a negative effect on air quality in the Sydney Basin. The Pheasants Nest service area is only a few kilometres further south of the proposed truck stop and would be a far better option.
970.	Jun 25 2010	Patricia Ibanez	MCHS	Uh... I like cow. SAVE THEM! Gee, keep this place green and clean.
971.	Jun 30 2010	Robert C Bishop	Centennial Park NSW	The Scenic Hills region should be preserved as it is and not damaged by the RTA's unAustralian approach.
972.	Jul 3 2010	Allen Weston	Georges Hall	Love horse riding keep as riding ranch keep it green
973.	Jul 7 2010	Karen Henry	Eschol Park	I grew up in Varroville. It is part of the scenic hills area and is the most beautiful part of the Campbelltown area. Anything that encroaches on zoning changes is dangerous area as it opens the door to further changes. This area is unique and one that I suggest the premier should see firsthand herself.
974.	Jul 9 2010	Cindi Corcoran	Varroville	
975.	Jul 19 2010	Leah Hosey	Camden	
976.	Jul 29 2010	Ashleigh Sahin	St. Andrews	
977.	Jul 29 2010	Tianna dominiak	bow bowling	LEAVE IT ALL ALONE! KEEP IT GREEN AND CLEAN! think off the animals and the environment
978.	Aug 2 2010	joanne cvitic	st andrews	

Scenic Hills Petition - Attachment B

979.	Aug 3 2010	Leonie Kramer	Vaocluse	
980.	Aug 9 2010	Jessica Woodrow	Ingleburn	Scenic hills owns ;D
981.	Aug 28 2010	J& C Corcoran	Varroville	
982.	Sep 2 2010	nathan orth	MCHS	

Please post petition forms back to: Scenic Hills Association,
PO Box 5946, MINTO BC 2566. www.scenic hills.org.au

TN CONSULTING PTY LTD

22 December 2010

Department of Planning
Major Project Assessment
GPO Box 39
SYDNEY NSW 2001

Attention: Clay Preshaw (via email: clay.preshaw@planning.nsw.gov.au)

Dear Major Project Assessment Section,

**RE: MP 09_0048 Camden Gas Project- Submission on behalf of landowners of Lot 3
DP 260703 and Lots 1 – 4 inclusive SP 36786
Properties: 182 – 188 Raby Road Catherine Fields**

Reference is made to the Camden gas Project – Northern Expansion being Major Project MP 09_0048 prepared on behalf of AGL which has recently been on Public Exhibition.

On behalf of the Landowners we are seeking to make a late submission on the application and in particular objecting to any potential impacts associated with the proposed Gas Well locations CU 20 and CU 22 and any potential impacts associated with the 200m buffer area on the future residential development.

We act for the Scenic Hills / Gledswood Estate Landowners include:

- Sam Galluzzo
- Frank Galluzzo
- Vince Piscuineri
- Joe Bernatovic
- Rok Friscic
- Caldla Pty Ltd - Roy and Pat Nasso

The subject Lands are part of the ECB / Gledswood proposed rezoning, known as Camden council Draft LEP 151. Part of the lands are proposed to be zoned Private Recreation and Part of the lands are proposed to be zoned Residential R1. Under the Draft LEP 151 the lands have development potential for some 800 lots as shown on the attached Masterplan.

It has come to our attention that as part of the Gas Project that the surface gas wells identified as CU 20 and CU 22 are situated in areas of proposed residential development (CU 20) or situated adjacent to proposed residential development (CU 22), as shown on attached plan.

It is pointed out that the position of the proposed Gas Wells, as shown on the attached plan, do not accurately show the relationship of the residential land contained in the Draft LEP 151.

In relation to (CU 20) the position of the Gas Well must be relocated to not affect any proposed residential zoned land, and it is further suggested the Well to be relocated on the western side of the Sydney water Catchment Channel in a Riparian Corridor.

In relation to (CU22) it is suggested an alternative location be considered for the proposed Well site. The alternative location could either be on the western side of the Sydney Water Catchment Channel, or further to the east to be located in the South – eastern corner of the site in the proposed Riparian corridor.

The landowners are concerned with the exhibition of this EA report and the location of the Gas Wells will impact on the impending residential development of the subject property. The Department of Planning intends to rezone the land, Draft LEP 151 before June 2011. The Landowners intend to lodge Development Applications for Residential Development in July 2011, with construction of the residential to commence late 2011, or early 2012. The concern is that any potential residential purchasers will be affected by the Gas Well locations and the 200m buffer that may adversely affect the sale of residential lots.

On behalf of the Landowners, we are seeking assurance that Gas Wells CU 20 and CU 22 should be relocated in a westerly direction to be sited further away from proposed Residential Zoned land in areas identified as Open Space Corridors, and as a consequence the impact of the proposed Gas Wells and Buffer area upon the proposed residential zoned land will be reduced.

We wish to meet with you or AGL representatives to further discuss.

Yours faithfully,
TN CONSULTING PTY LTD

KEITH APPS





Legend

--- Site boundary

Scale 1:6000@ A2
0 100 200 300 400m



TN CONSULTING PTY LTD

13 December 2011

Department of Planning
Major Project Assessment
GPO Box 39
SYDNEY NSW 2001

attention: Howard Reed.

Attention: Clay Preshaw (via email: clay.preshaw@planning.nsw.gov.au)

Dear Major Project Assessment Section,

**RE: MP 09_0048 Camden Gas Project- Submission on behalf of landowners of Lot 3
DP 260703 and Lots 1 – 4 inclusive SP 36786
Properties: 182 – 188 Raby Road Catherine Fields**

Reference is made to the Camden gas Project – Northern Expansion being Major Project MP 09_0048 prepared on behalf of AGL which was on Public Exhibition, in 2010, and our submission made in December 2010, in response to that Exhibition.

To date we have had no written response to our submission from the Department Of Planning or the applicant, AGL Ltd.

We act for the Scenic Hills / Gledswood Estate Landowners include:

- Sam Galluzzo
- Frank Galluzzo
- Vince Piscuineri
- Joe Bernatovic
- Rok Friscic
- Caldla Pty Ltd - Roy and Pat Nasso

Department of Planning Received 16 DEC 2011 Scanning Room
--

The subject Lands are part of the ECB / Gledswood proposed rezoning, known as Camden Council Draft LEP 151. Part of the lands are proposed to be zoned Private Recreation and Part of the lands are proposed to be zoned Residential R1. Under the Draft LEP 151 the lands have development potential for some 860 lots as shown on the attached Masterplan.

Camden Council has prepared a draft Voluntary Planning Agreement (VPA), which the subject landowners have agreed to sign.

The landowners are concerned with the lack of information provided since the exhibition period, and the location of the Gas Wells will impact on the impending residential

development of the subject property. The Department of Planning intends to rezone the land, Draft LEP 151 before June 2012.

The Landowners intend to lodge Development Applications for Residential Development in July 2012, with construction of the residential estate to commence late 2012, or early 2013. The first residential dwellings will be constructed in 2013.

The concern is that any potential residential purchasers will be affected by the proposal as a whole, and will adversely affect the sale of residential lots.

On behalf of the Landowners, after further consideration, we do not support the proposal of any Coal Seam Gas Mining within our lands.

The sites are to be used for Residential Housing being predominantly to be zoned R1 residential.

Any future impact of the proposal on a Residential Housing Estate is unacceptable.

We are seeking assurance that the proposal, if to proceed, should be relocated in a easterly direction to be sited further away from proposed Residential Zoned land in areas identified as Rural Zoned Land.

We wish to meet with you or AGL representatives to further discuss.

Yours faithfully,
TN CONSULTING PTY LTD

KEITH APPS

