

IMAGE 1 – Aerial View of Hilly Street
No's 40, 38, 36, 30-34 (Construction)

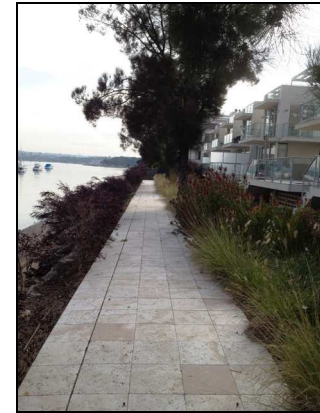


40 Hilly Street
WSP – 5 metres
BSS – nil



38 Hilly St (on left)
WSP – 5 metres
BSS – nil

36 Hilly St (right)
WSP – 8 metres
BSS – nil



30-34 Hilly Street
WSP – 6.5m (balcony), 8m (building)
(Note – No Public Access; estimate only)
BSS – 3m & 1.5m

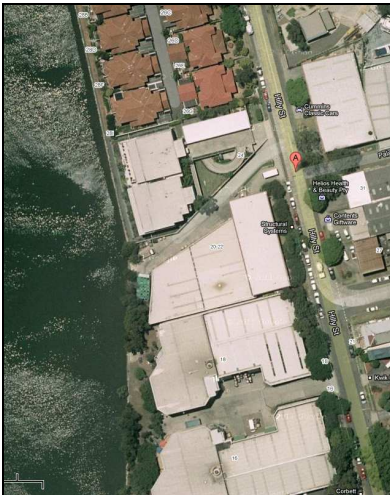


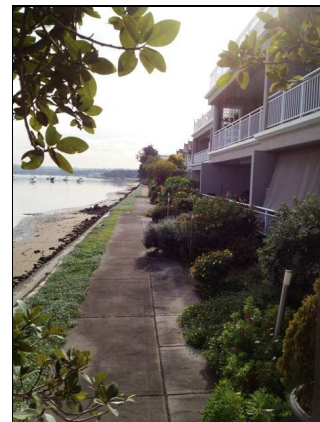
IMAGE 2 – Aerial View of Hilly Street
No's 26-28 & 22-24 (Residential); 20, 18, 16 (Commercial)



30-34 Hilly St (foreground)
26-28 Hilly St (background)
WSP – 5m (balcony), 7.5m (building)
(Note – No Public Access; estimate only)
BSS – 1.5m



26-28 Hilly Street
WSP – 5m (balcony), 7.5m (building)
(Note – No Public Access; estimate only)
BSS – 1m



22-24 Hilly Street
WSP – 4 to 6 metres (Variable)
(Note – No Public Access; estimate only)
BSS – nil

Waterfront Setbacks & Pathways (WSP) & Building Setbacks / Separations (BSS)

Existing Council Approved Developments