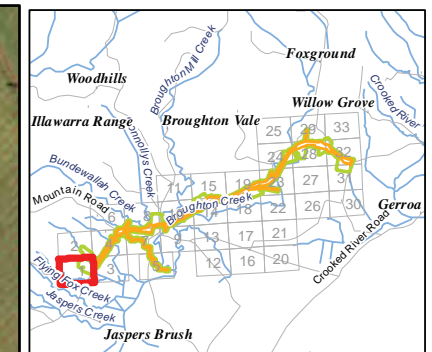








Appendix J

Figure mapbooks



Legend

-  Survey sites
 -  Subject Site - Temporary Creek Crossings
 -  Subject Site - Footprint
- Ancillary Sites**
-  Subject Site - Compound
 -  Subject Site - Stockpile
 -  Study Area

Ancillary Sites




-  Subject Site - Compound
-  Subject Site - Stockpile
-  Study Area

Figure 2.1.1: Survey sites



Biosis Research Pty. Ltd.
18-20 Mandible Street
Alexandria
NEW SOUTH WALES
2015

Date: 13 July 2012

Drawn by: RS/JS/ANP

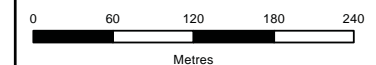
File: 13194

Checked by: JC

Location:P:\15000s\15039\Mapping\Variation 1\Variation 1 Figures\13194_S2_F2-1_Sites_130712.mxd

Acknowledgements:

Aerial imagery provided by ARUP
This product incorporates Data which is
copyright to the Commonwealth of Australia (c.2003)



Scale: 1:4,000 at A3

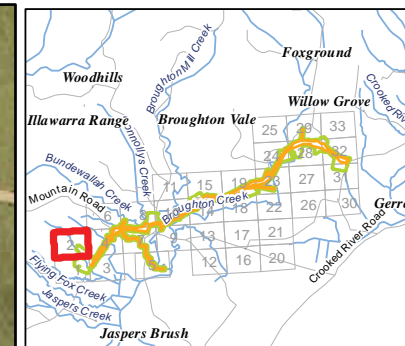
Map Projection: Transverse Mercator

Horizontal Datum: Geocentric Datum of Australia 1994

Grid: Map Grid of Australia, Zone 56

Ü

Figure 2.1



Legend

- Survey sites
- Subject Site - Temporary Creek Crossings
- Subject Site - Footprint
- Ancillary Sites
- Subject Site - Compound
- Subject Site - Stockpile
- Study Area



BIOSIS Research Pty. Ltd.
18-20 Mandible Street
Alexandria
NEW SOUTH WALES
2015

Figure 2.1.2: Survey sites

Date: 13 July 2012

Drawn by: RS/JS/ANP

File: 13194

Checked by: JC

Location: P:\15000s\15039\Mapping\Variation 1\Variation 1 Figures\13194_S2_F2-1_Sites_130712.mxd

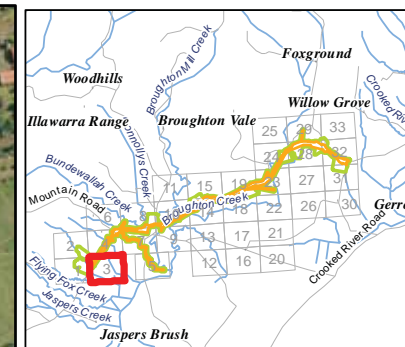
Acknowledgements:
Aerial imagery provided by ARUP
This product incorporates Data which is
copyright to the Commonwealth of Australia (c.2003)



Scale: 1:4,000 at A3
Map Projection: Transverse Mercator
Horizontal Datum: Geocentric Datum of Australia 1994
Grid: Map Grid of Australia, Zone 56



Figure 2.1



Legend

- Survey sites
- Subject Site - Temporary Creek Crossings
- Subject Site - Footprint
- Ancillary Sites**
- Subject Site - Compound
- Subject Site - Stockpile
- Study Area



Biosis Research Pty. Ltd.
18-20 Mandible Street
Alexandria
NEW SOUTH WALES
2015

Figure 2.1.3: Survey sites

Date: 13 July 2012	Drawn by: RS/JS/ANP
File: 13194	Checked by: JC
Location: P:\15000s\15039\Mapping\Variation 1\Variation 1 Figures\13194_S2_F2-1_Sites_130712.mxd	

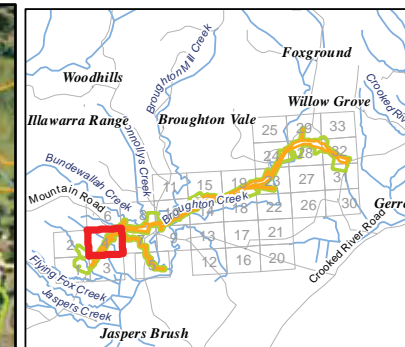
Acknowledgements:
Aerial imagery provided by ARUP
This product incorporates Data which is
copyright to the Commonwealth of Australia (c.2003)



Scale: 1:4,000 at A3
Map Projection: Transverse Mercator
Horizontal Datum: Geocentric Datum of Australia 1994
Grid: Map Grid of Australia, Zone 56



Figure 2.1



Legend

- Survey sites
- Subject Site - Temporary Creek Crossings
- Subject Site - Footprint
- Ancillary Sites**
- Subject Site - Compound
- Subject Site - Stockpile
- Study Area



BIOSIS Research Pty. Ltd.
18-20 Mandible Street
Alexandria
NEW SOUTH WALES
2015

Figure 2.1.4: Survey sites

Date: 13 July 2012

Drawn by: RS/JS/ANP

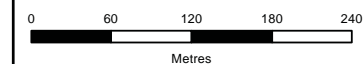
File: 13194

Checked by: JC

Location: P:\15000s\15039\Mapping\Variation 1\Variation 1 Figures\13194_S2_F2-1_Sites_130712.mxd

Acknowledgements:

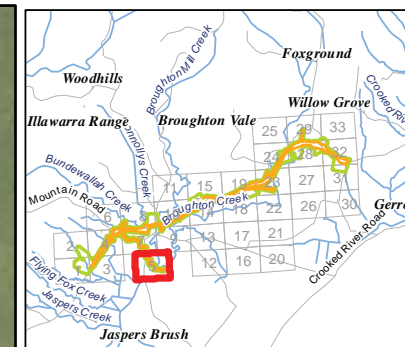
Aerial imagery provided by ARUP
This product incorporates data which is
copyright to the Commonwealth of Australia (c.2003)



Scale: 1:4,000 at A3
Map Projection: Transverse Mercator
Horizontal Datum: Geocentric Datum of Australia 1994
Grid: Map Grid of Australia, Zone 56

Ü

Figure 2.1



Legend

- Survey sites
- Subject Site - Temporary Creek Crossings
- Subject Site - Footprint
- Ancillary Sites
- Subject Site - Compound
- Subject Site - Stockpile
- Study Area



Biosis Research Pty. Ltd.
18-20 Mandible Street
Alexandria
NEW SOUTH WALES
2015

Figure 2.1.5: Survey sites

Date: 13 July 2012

Drawn by: RS/JS/ANP

File: 13194

Checked by: JC

Location: P:\15000s\15039\Mapping\Variation 1\Variation 1 Figures\13194_S2_F2-1_Sites_130712.mxd

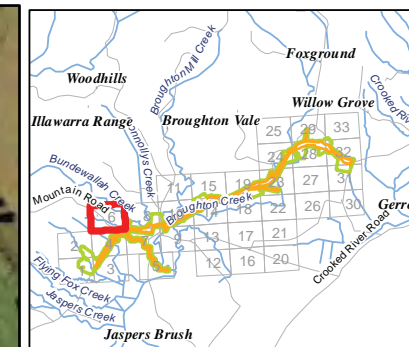
Acknowledgements:
Aerial imagery provided by ARUP
This product incorporates Data which is
copyright to the Commonwealth of Australia (c.2003)



Scale: 1:4,000 at A3
Map Projection: Transverse Mercator
Horizontal Datum: Geocentric Datum of Australia 1994
Grid: Map Grid of Australia, Zone 56



Figure 2.1



Legend

- Survey sites
- Subject Site - Temporary Creek Crossings
- Subject Site - Footprint
- Ancillary Sites
- Subject Site - Compound
- Subject Site - Stockpile
- Study Area



Bios Research Pty. Ltd.
18-20 Mandible Street
Alexandria
NEW SOUTH WALES
2015

Figure 2.1.6: Survey sites

Date: 13 July 2012	Drawn by: RS/JS/ANP
File: 13194	Checked by: JC
Location: P:\15000s\15039\Mapping\Variation 1\Variation 1 Figures\13194_S2_F2-1_Sites_130712.mxd	

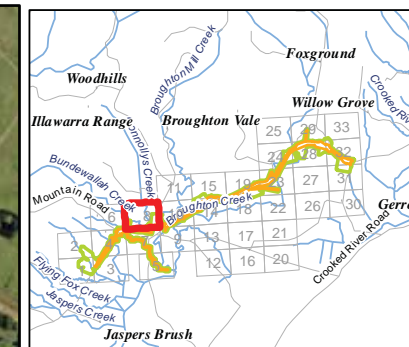
Acknowledgements:
Aerial imagery provided by ARUP
This product incorporates Data which is
copyright to the Commonwealth of Australia (c.2003)



Scale: 1:4,000 at A3
Map Projection: Transverse Mercator
Horizontal Datum: Geocentric Datum of Australia 1994
Grid: Map Grid of Australia, Zone 56

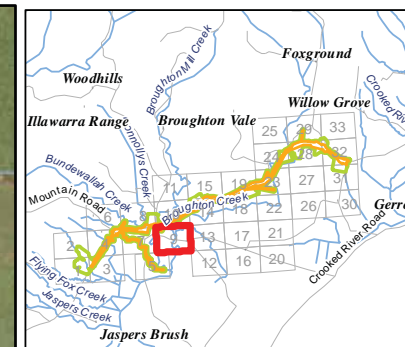


Figure 2.1



Legend

- Survey sites
- Subject Site - Temporary Creek Crossings
- Subject Site - Footprint
- Ancillary Sites
- Subject Site - Compound
- Subject Site - Stockpile
- Study Area

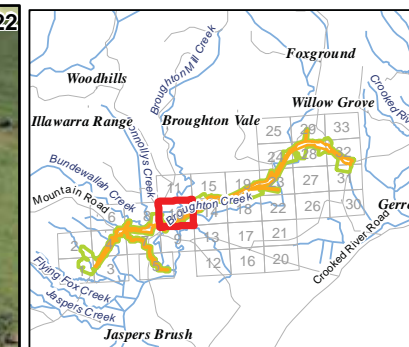


Legend

- Survey sites
- Subject Site - Temporary Creek Crossings
- Subject Site - Footprint
- Ancillary Sites**
- Subject Site - Compound
- Subject Site - Stockpile
- Study Area



Site 22



Legend

- Survey sites
- Subject Site - Temporary Creek Crossings
- Subject Site - Footprint
- Ancillary Sites**
- Subject Site - Compound
- Subject Site - Stockpile
- Study Area



Biosis Research Pty. Ltd.
18-20 Mandible Street
Alexandria
NEW SOUTH WALES
2015

Figure 2.1.10: Survey sites

Date: 13 July 2012

Drawn by: RS/JS/ANP

File: 13194

Checked by: JC

Location: P:\15000s\15039\Mapping\Variation 1\Variation 1 Figures\13194_S2_F2-1_Sites_130712.mxd

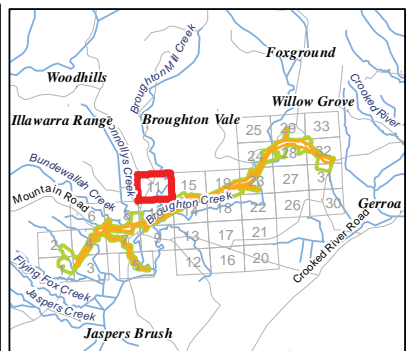
Acknowledgements:
Aerial imagery provided by ARUP
This product incorporates Data which is
copyright to the Commonwealth of Australia (c.2003)



Scale: 1:4,000 at A3
Map Projection: Transverse Mercator
Horizontal Datum: Geocentric Datum of Australia 1994
Grid: Map Grid of Australia, Zone 56

Ü

Figure 2.1



Legend

- Survey sites
- Subject Site - Temporary Creek Crossings
- Subject Site - Footprint
- Ancillary Sites**
- Subject Site - Compound
- Subject Site - Stockpile
- Study Area



Biosis Research Pty. Ltd.
18-20 Mandible Street
Alexandria
NEW SOUTH WALES
2015

Figure 2.1.11: Survey sites

Date: 13 July 2012

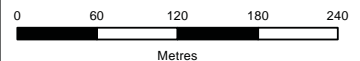
Drawn by: RS/JS/ANP

File: 13194

Checked by: JC

Location: P:\15000s\15039\Mapping\Variation 1\Variation 1 Figures\13194_S2_F2-1_Sites_130712.mxd

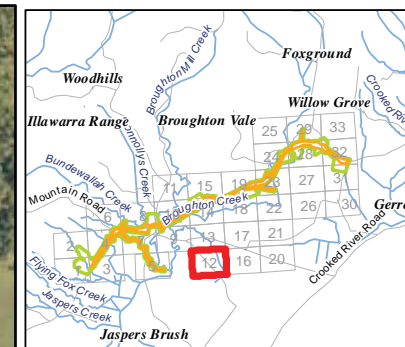
Acknowledgements:
Aerial imagery provided by ARUP
This product incorporates Data which is
copyright to the Commonwealth of Australia (c.2003)



Scale: 1:4,000 at A3
Map Projection: Transverse Mercator
Horizontal Datum: Geocentric Datum of Australia 1994
Grid: Map Grid of Australia, Zone 56

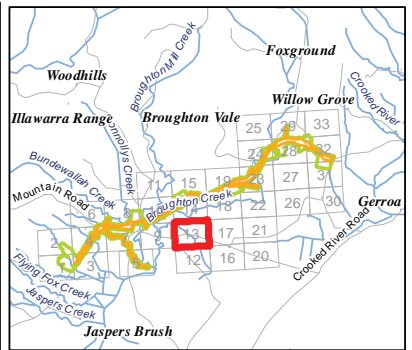
Ü

Figure 2.1



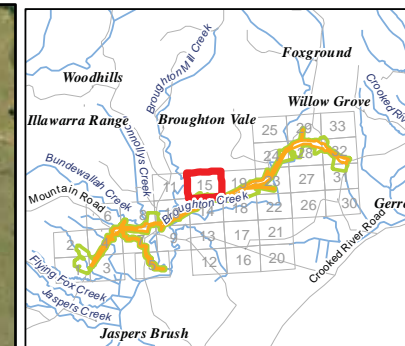
Legend

- Survey sites
- Subject Site - Temporary Creek Crossings
- Subject Site - Footprint
- Ancillary Sites
 - Subject Site - Compound
 - Subject Site - Stockpile
- Study Area



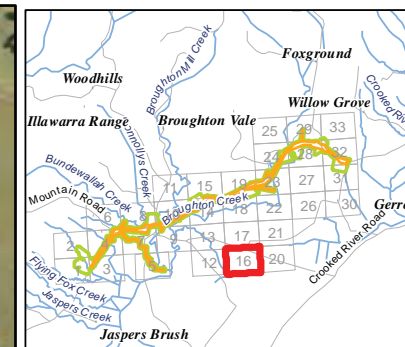
Legend

- Survey sites
 - Subject Site - Temporary Creek Crossings
 - Subject Site - Footprint
 - Subject Site - Compound
 - Subject Site - Stockpile
 - Study Area
- Ancillary Sites**
- Subject Site - Compound
 - Subject Site - Stockpile
 - Study Area



Legend

- Survey sites
- Subject Site - Temporary Creek Crossings
- Subject Site - Footprint
- Ancillary Sites
 - Subject Site - Compound
 - Subject Site - Stockpile
- Study Area



Legend

- Survey sites
- Subject Site - Temporary Creek Crossings
- Subject Site - Footprint
- Ancillary Sites**
- Subject Site - Compound
- Subject Site - Stockpile
- Study Area



Biosis Research Pty. Ltd.
 18-20 Mandible Street
 Alexandria
 NEW SOUTH WALES
 2015

Figure 2.1.16: Survey sites

Date: 13 July 2012	Drawn by: RS/JS/ANP
File: 13194	Checked by: JC
Location: P:\15000s\15039\Mapping\Variation 1\Variation 1 Figures\13194_S2_F2-1_Sites_130712.mxd	

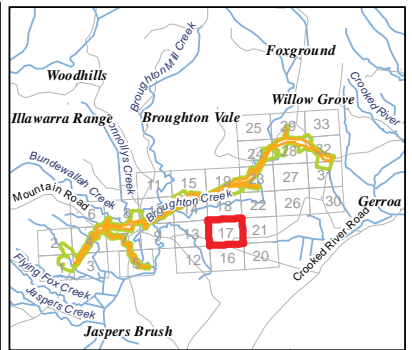
Acknowledgements:
 Aerial imagery provided by ARUP
 This product incorporates Data which is
 copyright to the Commonwealth of Australia (c.2003)



Scale: 1:4,000 at A3
 Map Projection: Transverse Mercator
 Horizontal Datum: Geocentric Datum of Australia 1994
 Grid: Map Grid of Australia, Zone 56

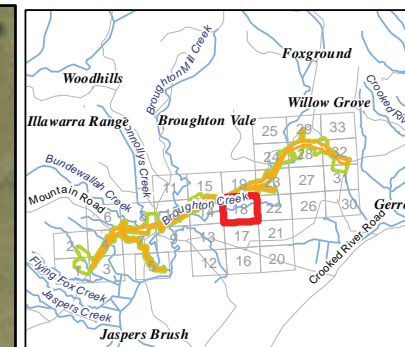


Figure 2.1



Legend

- Survey sites
- Subject Site - Temporary Creek Crossings
- Subject Site - Footprint
- Ancillary Sites**
- Subject Site - Compound
- Subject Site - Stockpile
- Study Area



Legend

- Survey sites
- Subject Site - Temporary Creek Crossings
- Subject Site - Footprint
- Ancillary Sites**
- Subject Site - Compound
- Subject Site - Stockpile
- Study Area



Biosis Research Pty. Ltd.
18-20 Mandible Street
Alexandria
NEW SOUTH WALES
2015

Figure 2.1.18: Survey sites

Date: 13 July 2012	Drawn by: RS/JS/ANP
File: 13194	Checked by: JC
Location: P:\15000s\15039\Mapping\Variation 1\Variation 1 Figures\13194_S2_F2-1_Sites_130712.mxd	

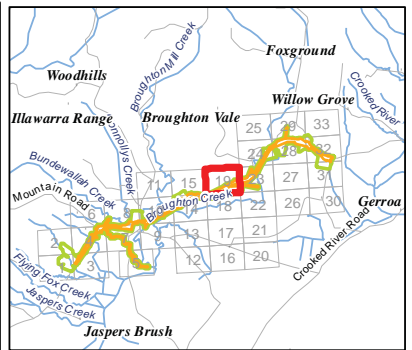
Acknowledgements:
Aerial imagery provided by ARUP
This product incorporates Data which is
copyright to the Commonwealth of Australia (c.2003)



Scale: 1:4,000 at A3
Map Projection: Transverse Mercator
Horizontal Datum: Geocentric Datum of Australia 1994
Grid: Map Grid of Australia, Zone 56



Figure 2.1



Legend

- Survey sites
- Subject Site - Temporary Creek Crossings
- Subject Site - Footprint
- Ancillary Sites**
- Subject Site - Compound
- Subject Site - Stockpile
- Study Area

Site 15



Biosis Research Pty. Ltd.
18-20 Mandible Street
Alexandria
NEW SOUTH WALES
2015

Figure 2.1.19: Survey sites

Date: 13 July 2012

Drawn by: RS/JS/ANP

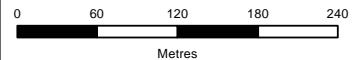
File: 13194

Checked by: JC

Location: P:\15000s\15039\Mapping\Variation 1\Variation 1 Figures\13194_S2_F2-1_Sites_130712.mxd

Acknowledgements:

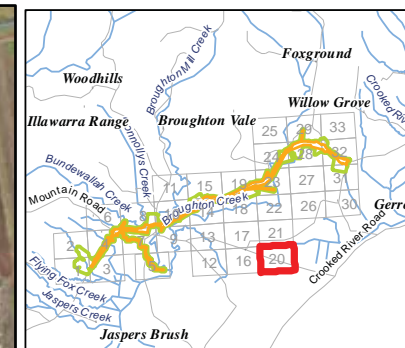
Aerial imagery provided by ARUP
This product incorporates Data which is
copyright to the Commonwealth of Australia (c.2003)



Scale: 1:4,000 at A3
Map Projection: Transverse Mercator
Horizontal Datum: Geocentric Datum of Australia 1994
Grid: Map Grid of Australia, Zone 56

Ü

Figure 2.1



Legend

- Survey sites
- Subject Site - Temporary Creek Crossings
- Subject Site - Footprint
- Ancillary Sites**
- Subject Site - Compound
- Subject Site - Stockpile
- Study Area

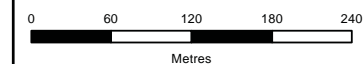


Biosis Research Pty. Ltd.
18-20 Mandible Street
Alexandria
NEW SOUTH WALES
2015

Figure 2.1.20: Survey sites

Date: 13 July 2012	Drawn by: RS/JS/ANP
File: 13194	Checked by: JC
Location: P:\15000s\15039\Mapping\Variation 1\Variation 1 Figures\13194_S2_F2-1_Sites_130712.mxd	

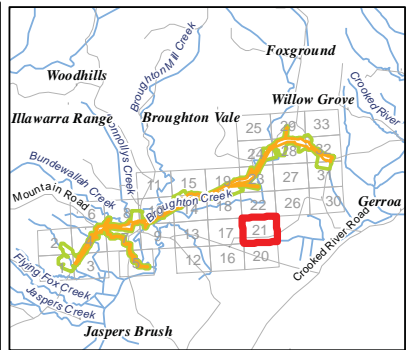
Acknowledgements:
Aerial imagery provided by ARUP
This product incorporates Data which is
copyright to the Commonwealth of Australia (c.2003)



Scale: 1:4,000 at A3
Map Projection: Transverse Mercator
Horizontal Datum: Geocentric Datum of Australia 1994
Grid: Map Grid of Australia, Zone 56



Figure 2.1



Legend

- Survey sites
- Subject Site - Temporary Creek Crossings
- Subject Site - Footprint
- Ancillary Sites**
- Subject Site - Compound
- Subject Site - Stockpile
- Study Area



Biosis Research Pty. Ltd.
18-20 Mandible Street
Alexandria
NEW SOUTH WALES
2015

Figure 2.1.21: Survey sites

Date: 13 July 2012

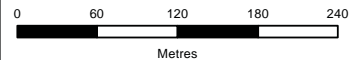
Drawn by: RS/JS/ANP

File: 13194

Checked by: JC

Location: P:\15000s\15039\Mapping\Variation 1\Variation 1 Figures\13194_S2_F2-1_Sites_130712.mxd

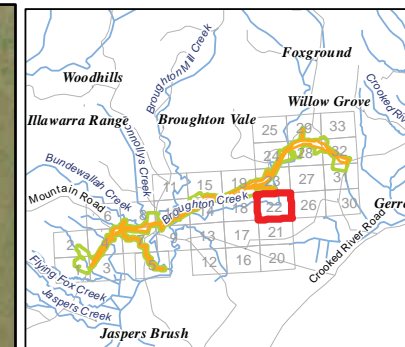
Acknowledgements:
Aerial imagery provided by ARUP
This product incorporates Data which is
copyright to the Commonwealth of Australia (c.2003)



Scale: 1:4,000 at A3
Map Projection: Transverse Mercator
Horizontal Datum: Geocentric Datum of Australia 1994
Grid: Map Grid of Australia, Zone 56


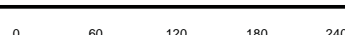

Ü

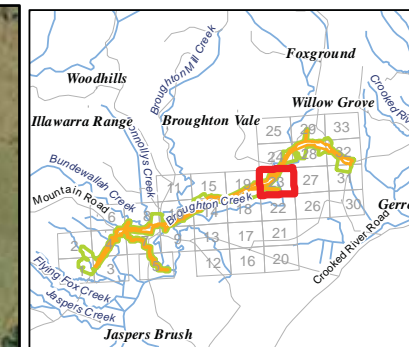
Figure 2.1



Legend

- Survey sites
- Subject Site - Temporary Creek Crossings
- Subject Site - Footprint
- Ancillary Sites**
- Subject Site - Compound
- Subject Site - Stockpile
- Study Area

	Biosis Research Pty. Ltd. 18-20 Mandible Street Alexandria NEW SOUTH WALES 2015			
	Figure 2.1.22: Survey sites			
	Date: 13 July 2012	Drawn by: RS/JS/ANP		
	File: 13194	Checked by: JC		
Location: P:\15000s\15039\Mapping\Variation 1\Variation 1 Figures\13194_S2_F2-1_Sites_130712.mxd		Acknowledgements: Aerial imagery provided by ARUP This product incorporates Data which is copyright to the Commonwealth of Australia (c.2003)	 Scale: 1:4,000 at A3 Map Projection: Transverse Mercator Horizontal Datum: Geocentric Datum of Australia 1994 Grid: Map Grid of Australia, Zone 56	 Figure 2.1



Legend

- Survey sites
- Subject Site - Temporary Creek Crossings
- Subject Site - Footprint
- Ancillary Sites**
- Subject Site - Compound
- Subject Site - Stockpile
- Study Area



Biosis Research Pty. Ltd.
18-20 Mandible Street
Alexandria
NEW SOUTH WALES
2015

Figure 2.1.23: Survey sites

Date: 13 July 2012

Drawn by: RS/JS/ANP

File: 13194

Checked by: JC

Location: P:\15000s\15039\Mapping\Variation 1\Variation 1 Figures\13194_S2_F2-1_Sites_130712.mxd

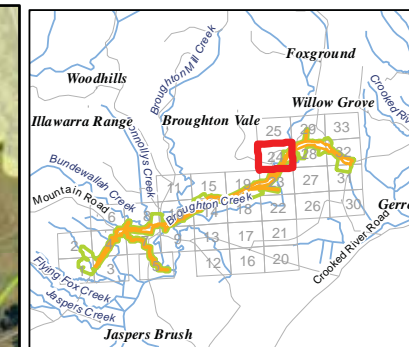
Acknowledgements:
Aerial imagery provided by ARUP
This product incorporates Data which is
copyright to the Commonwealth of Australia (c.2003)



Scale: 1:4,000 at A3
Map Projection: Transverse Mercator
Horizontal Datum: Geocentric Datum of Australia 1994
Grid: Map Grid of Australia, Zone 56



Figure 2.1



Legend

- Survey sites
- Subject Site - Temporary Creek Crossings
- Subject Site - Footprint
- Ancillary Sites**
- Subject Site - Compound
- Subject Site - Stockpile
- Study Area



BIOSIS Research Pty. Ltd.
18-20 Mandible Street
Alexandria
NEW SOUTH WALES
2015

Figure 2.1.24: Survey sites

Date: 13 July 2012

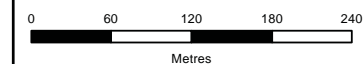
Drawn by: RS/JS/ANP

File: 13194

Checked by: JC

Location: P:\15000s\15039\Mapping\Variation 1\Variation 1 Figures\13194_S2_F2-1_Sites_130712.mxd

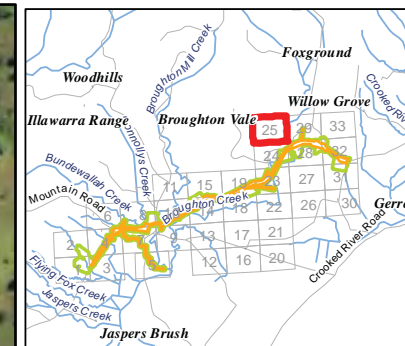
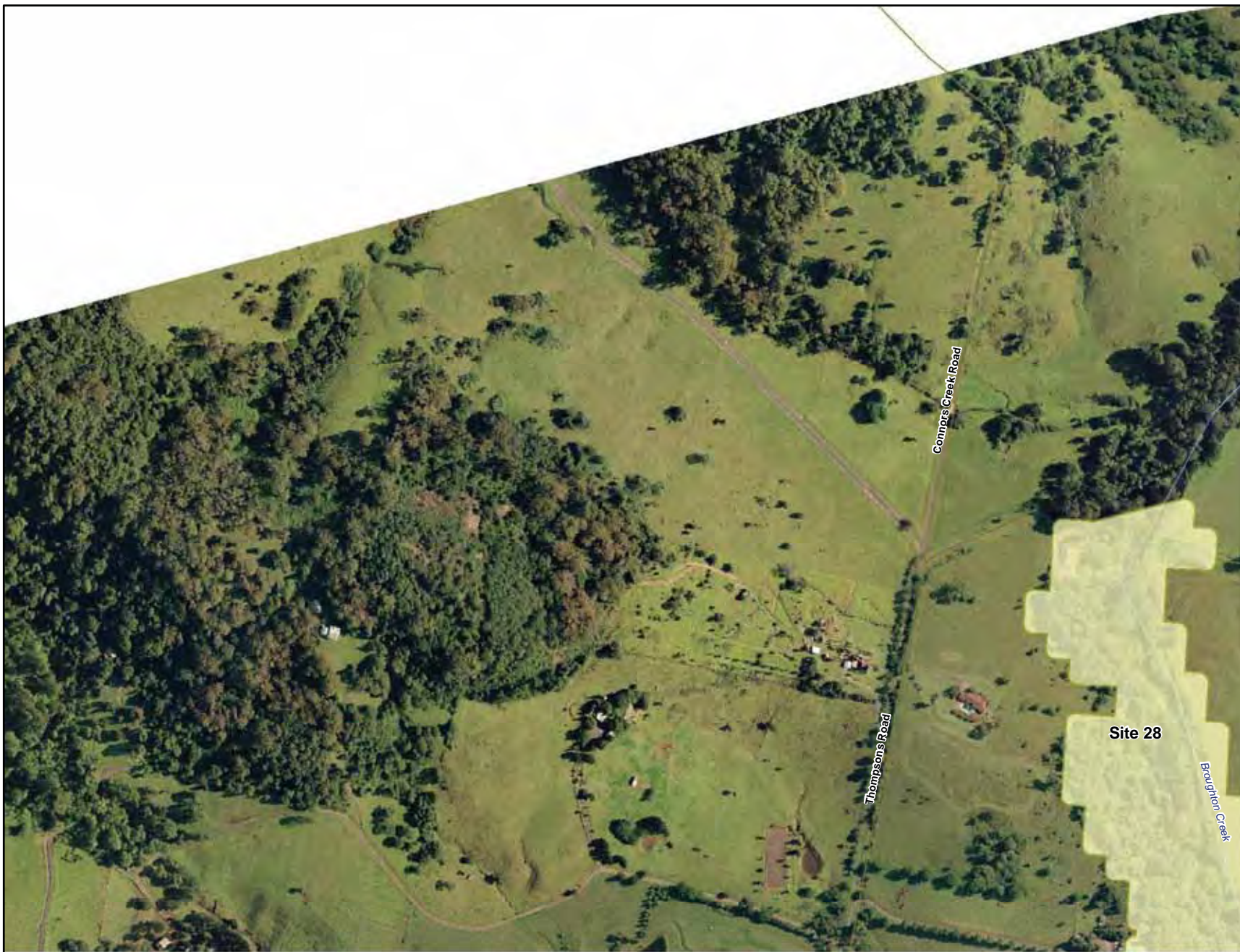
Acknowledgements:
Aerial imagery provided by ARUP
This product incorporates Data which is
copyright to the Commonwealth of Australia (c.2003)



Scale: 1:4,000 at A3
Map Projection: Transverse Mercator
Horizontal Datum: Geocentric Datum of Australia 1994
Grid: Map Grid of Australia, Zone 56






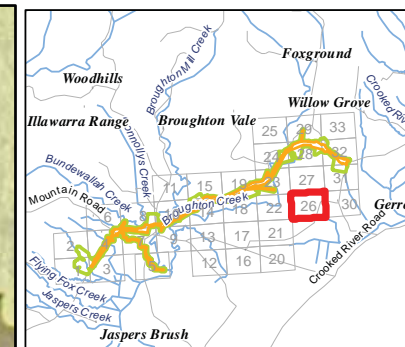
Figure 2.1



Legend

- Survey sites
- Subject Site - Temporary Creek Crossings
- Subject Site - Footprint
- Ancillary Sites
- Subject Site - Compound
- Subject Site - Stockpile
- Study Area

	Biosis Research Pty. Ltd. 18-20 Mandible Street Alexandria NEW SOUTH WALES 2015			
	Figure 2.1.25: Survey sites			
	Date: 13 July 2012	Drawn by: RS/JS/ANP		
	File: 13194	Checked by: JC		
Location: P:\15000s\15039\Mapping\Variation 1\Variation 1 Figures\13194_S2_F2-1_Sites_130712.mxd		Acknowledgements: Aerial imagery provided by ARUP This product incorporates Data which is copyright to the Commonwealth of Australia (c.2003)	 Scale: 1:4,000 at A3 Map Projection: Transverse Mercator Horizontal Datum: Geocentric Datum of Australia 1994 Grid: Map Grid of Australia, Zone 56	 Figure 2.1



Legend

- Survey sites
- Subject Site - Temporary Creek Crossings
- Subject Site - Footprint
- Ancillary Sites
- Subject Site - Compound
- Subject Site - Stockpile
- Study Area



BIOSIS Research Pty. Ltd.
18-20 Mandible Street
Alexandria
NEW SOUTH WALES
2015

Figure 2.1.26: Survey sites

Date: 13 July 2012

Drawn by: RS/JS/ANP

File: 13194

Checked by: JC

Location: P:\15000s\15039\Mapping\Variation 1\Variation 1 Figures\13194_S2_F2-1_Sites_130712.mxd

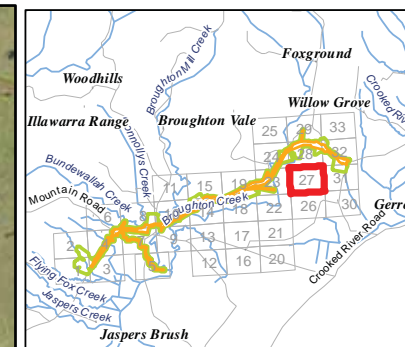
Acknowledgements:
Aerial imagery provided by ARUP
This product incorporates Data which is
copyright to the Commonwealth of Australia (c.2003)



Scale: 1:4,000 at A3
Map Projection: Transverse Mercator
Horizontal Datum: Geocentric Datum of Australia 1994
Grid: Map Grid of Australia, Zone 56



Figure 2.1



Legend

- Survey sites
- Subject Site - Temporary Creek Crossings
- Subject Site - Footprint
- Ancillary Sites**
- Subject Site - Compound
- Subject Site - Stockpile
- Study Area



BIOSIS Research Pty. Ltd.
18-20 Mandible Street
Alexandria
NEW SOUTH WALES
2015

Figure 2.1.27: Survey sites

Date: 13 July 2012

Drawn by: RS/JS/ANP

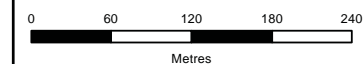
File: 13194

Checked by: JC

Location: P:\15000s\15039\Mapping\Variation 1\Variation 1 Figures\13194_S2_F2-1_Sites_130712.mxd

Acknowledgements:

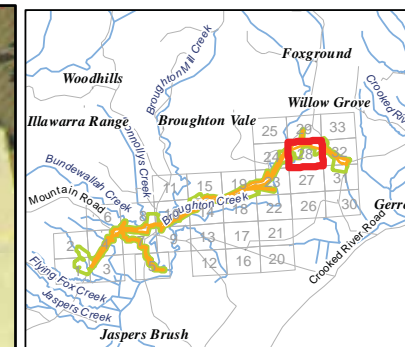
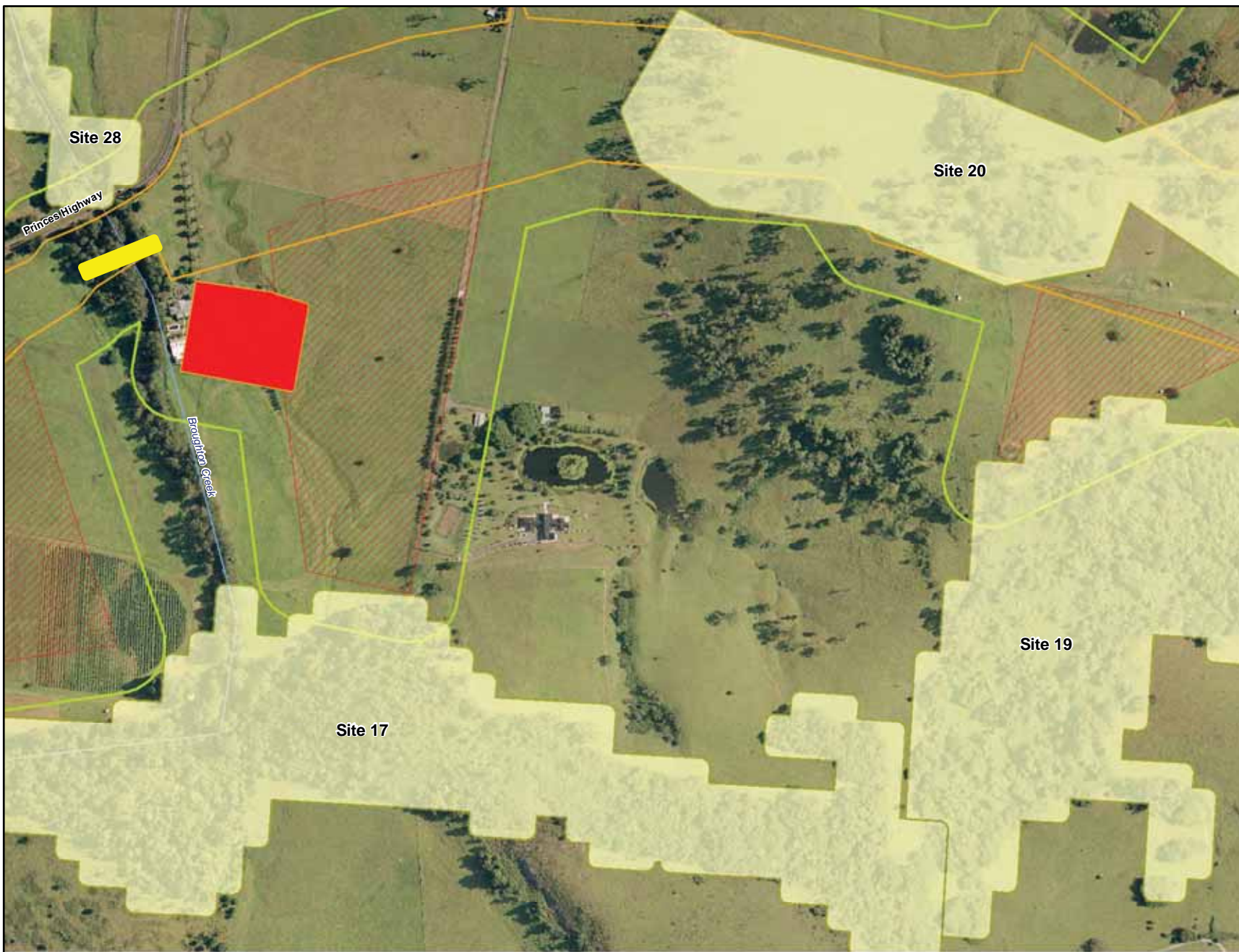
Aerial imagery provided by ARUP
This product incorporates Data which is
copyright to the Commonwealth of Australia (c.2003)



Scale: 1:4,000 at A3
Map Projection: Transverse Mercator
Horizontal Datum: Geocentric Datum of Australia 1994
Grid: Map Grid of Australia, Zone 56

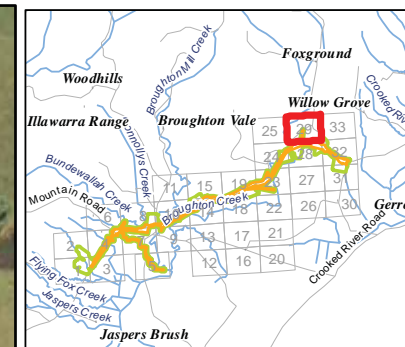
Ü

Figure 2.1



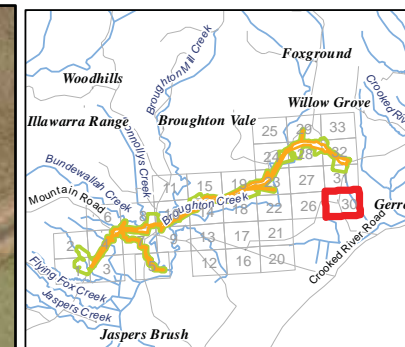
Legend

- Survey sites
- Subject Site - Temporary Creek Crossings
- Subject Site - Footprint
- Ancillary Sites**
- Subject Site - Compound
- Subject Site - Stockpile
- Study Area



Legend

- Survey sites
- Subject Site - Temporary Creek Crossings
- Subject Site - Footprint
- Ancillary Sites
- Subject Site - Compound
- Subject Site - Stockpile
- Study Area



Legend

- Survey sites
- Subject Site - Temporary Creek Crossings
- Subject Site - Footprint
- Ancillary Sites**
- Subject Site - Compound
- Subject Site - Stockpile
- Study Area



Biosis Research Pty. Ltd.
18-20 Mandible Street
Alexandria
NEW SOUTH WALES
2015

Figure 2.1.30: Survey sites

Date: 13 July 2012

Drawn by: RS/JS/ANP

File: 13194

Checked by: JC

Location: P:\15000s\15039\Mapping\Variation 1\Variation 1 Figures\13194_S2_F2-1_Sites_130712.mxd

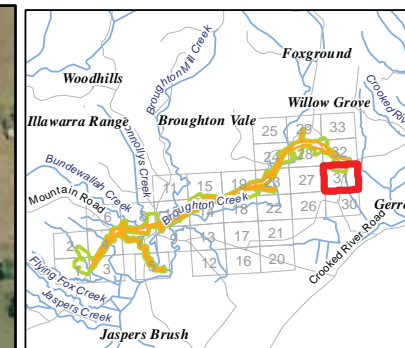
Acknowledgements:
Aerial imagery provided by ARUP
This product incorporates Data which is
copyright to the Commonwealth of Australia (c.2003)



Scale: 1:4,000 at A3
Map Projection: Transverse Mercator
Horizontal Datum: Geocentric Datum of Australia 1994
Grid: Map Grid of Australia, Zone 56

Ü

Figure 2.1



Legend

- Survey sites
- Subject Site - Temporary Creek Crossings
- Subject Site - Footprint
- Ancillary Sites**
- Subject Site - Compound
- Subject Site - Stockpile
- Study Area



Biosis Research Pty. Ltd.
18-20 Mandible Street
Alexandria
NEW SOUTH WALES
2015

Figure 2.1.31: Survey sites

Date: 13 July 2012

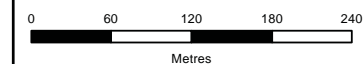
Drawn by: RS/JS/ANP

File: 13194

Checked by: JC

Location: P:\15000s\15039\Mapping\Variation 1\Variation 1 Figures\13194_S2_F2-1_Sites_130712.mxd

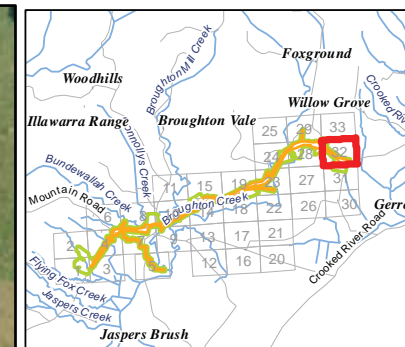
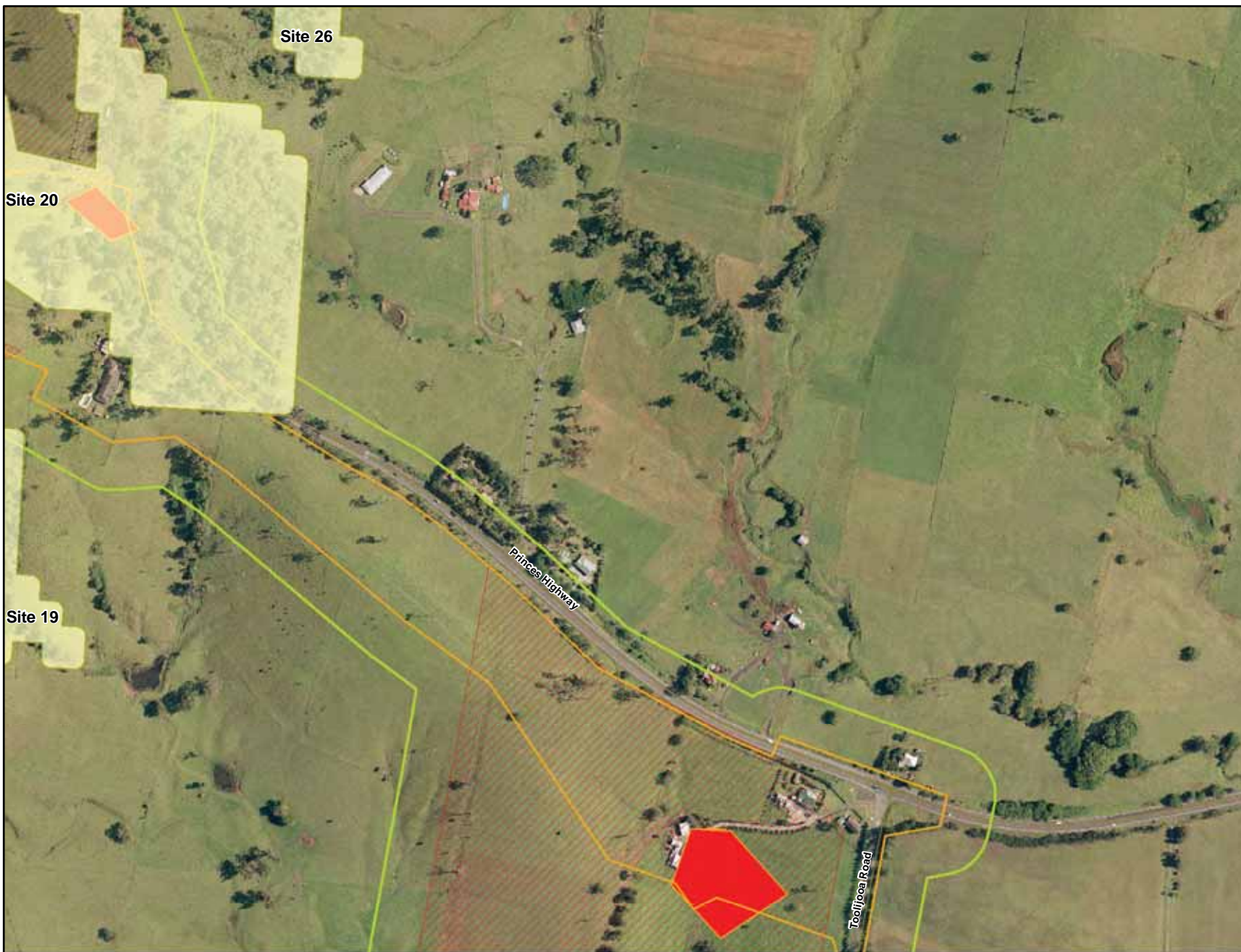
Acknowledgements:
Aerial imagery provided by ARUP
This product incorporates Data which is
copyright to the Commonwealth of Australia (c.2003)



Scale: 1:4,000 at A3
Map Projection: Transverse Mercator
Horizontal Datum: Geocentric Datum of Australia 1994
Grid: Map Grid of Australia, Zone 56



Figure 2.1



Legend

- Survey sites
- Subject Site - Temporary Creek Crossings
- Subject Site - Footprint
- Ancillary Sites**
- Subject Site - Compound
- Subject Site - Stockpile
- Study Area



Biosis Research Pty. Ltd.
18-20 Mandible Street
Alexandria
NEW SOUTH WALES
2015

Figure 2.1.32: Survey sites

Date: 13 July 2012	Drawn by: RS/JS/ANP
File: 13194	Checked by: JC
Location: P:\15000s\15039\Mapping\Variation 1\Variation 1 Figures\13194_S2_F2-1_Sites_130712.mxd	

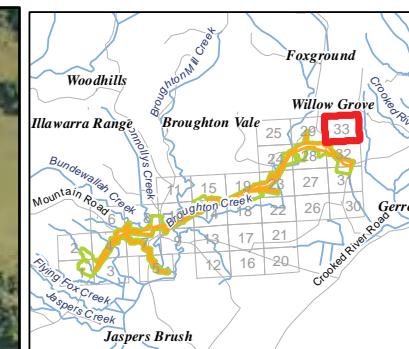
Acknowledgements:
Aerial imagery provided by ARUP
This product incorporates Data which is
copyright to the Commonwealth of Australia (c.2003)



Scale: 1:4,000 at A3
Map Projection: Transverse Mercator
Horizontal Datum: Geocentric Datum of Australia 1994
Grid: Map Grid of Australia, Zone 56

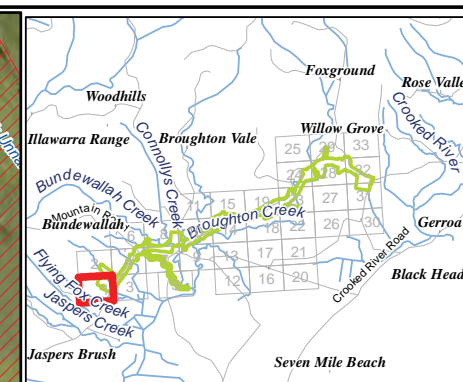


Figure 2.1



Legend

- Survey sites
- Subject Site - Temporary Creek Crossings
- Subject Site - Footprint
- Ancillary Sites**
- Subject Site - Compound
- Subject Site - Stockpile
- Study Area



Legend

(No. Refers to Quadrats listed in Appendix A)

- (Summer 2007 - Habitat condition assessment
-) Summer 2007 - Quadrat
-) Spring 2008 - Quadrat
- (Autumn 2009 - Habitat condition assessment
-) Autumn 2009 - Quadrat
- Summer 2007 - Random meander transect
- Spring 2008 - Random meander transect
- Autumn 2009 - Random meander transect
- Spring 2011 - Town Creek Random meander transect

■ Subject Site - Temporary Creek Crossings

□ Subject Site - Footprint

Ancillary Sites

■ Subject Site - Compound

▨ Subject Site - Stockpile

□ Study Area



Biosis Research Pty. Ltd.
18-20 Mandible Street
Alexandria
NEW SOUTH WALES
2015

Figure 2.2.1: Location of flora survey effort

Date: 1 August 2012

Drawn by: RS/JMS/ANP

File: 13194

Checked by: JC

Location: P:\15000s\15039\Mapping\Variation 2\Figures\15039_S2_F2-2_SurveyFlora_130712.mxd

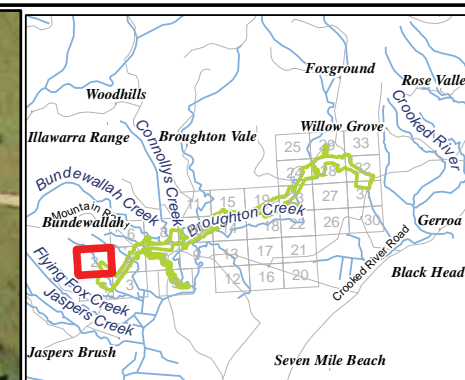
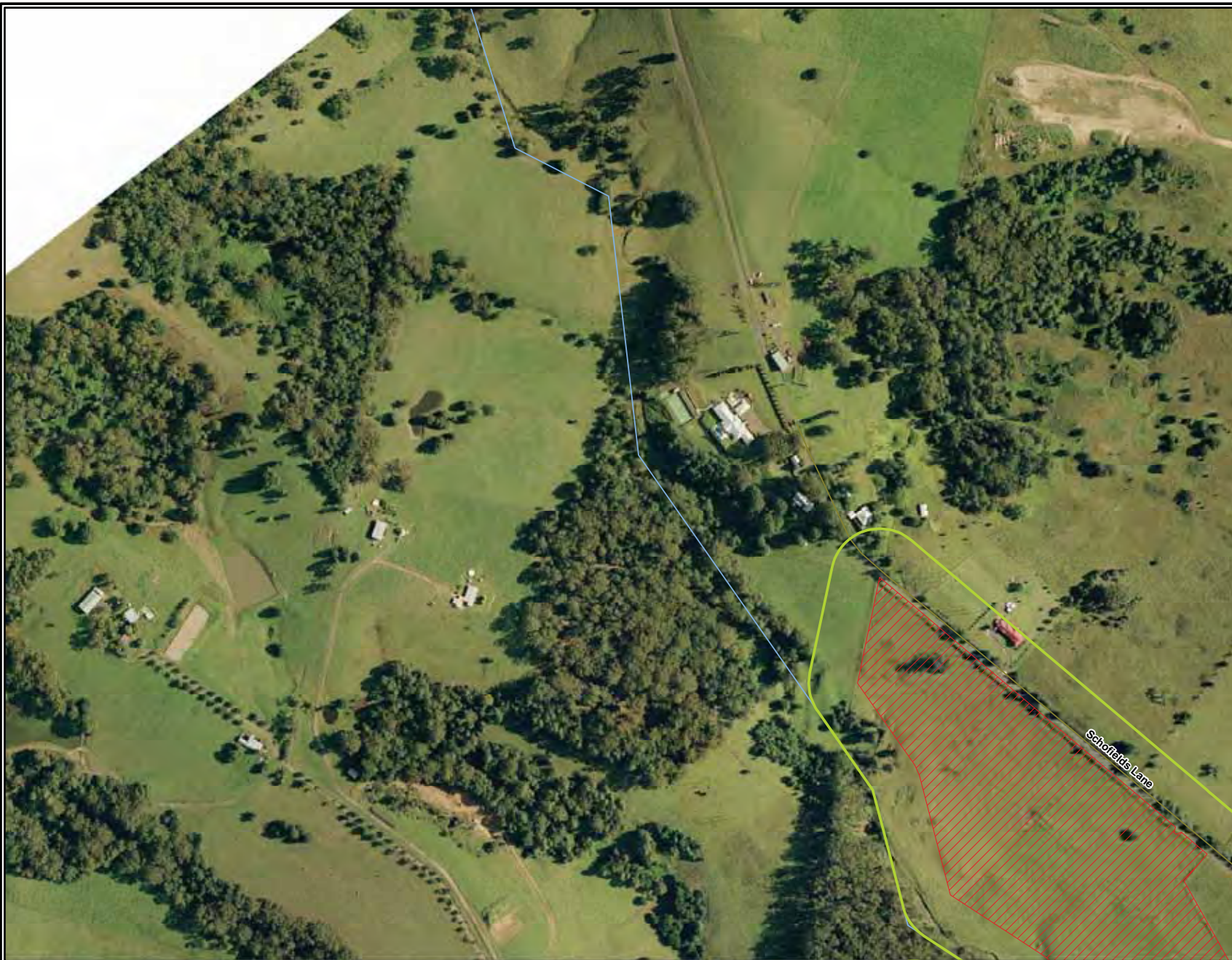
Acknowledgements:
Aerial imagery provided by ARUP
This product incorporates Data which is
copyright to the Commonwealth of Australia (c.2003)



Scale: 1:4,000 at A3
Map Projection: Transverse Mercator
Horizontal Datum: Geocentric Datum of Australia 1994
Grid: Map Grid of Australia, Zone 56



Figure 2.2



Legend

(No. Refers to Quadrats listed in Appendix A)

- (Summer 2007 - Habitat condition assessment
-) Summer 2007 - Quadrat
-) Spring 2008 - Quadrat
- (Autumn 2009 - Habitat condition assessment
-) Autumn 2009 - Quadrat
- Summer 2007 - Random meander transect
- Spring 2008 - Random meander transect
- Autumn 2009 - Random meander transect
- Spring 2011 - Town Creek Random meander transect

■ Subject Site - Temporary Creek Crossings

□ Subject Site - Footprint

Ancillary Sites

■ Subject Site - Compound

▨ Subject Site - Stockpile

□ Study Area



BIOSIS Research Pty. Ltd.
18-20 Mandible Street
Alexandria
NEW SOUTH WALES
2015

Figure 2.2.2: Location of flora survey effort

Date: 1 August 2012

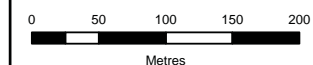
Drawn by: RS/JMS/ANP

File: 13194

Checked by: JC

Location: P:\15000s\15039\Mapping\Variation 2\Figures\15039_S2_F2-2_SurveyFlora_130712.mxd

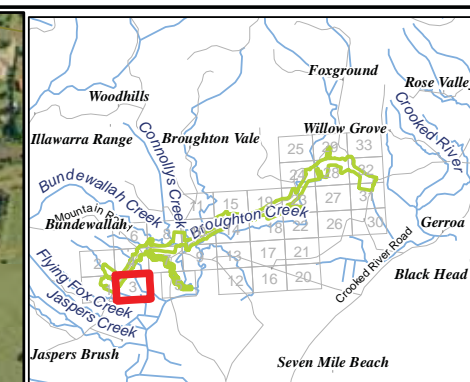
Acknowledgements:
Aerial imagery provided by ARUP
This product incorporates Data which is
copyright to the Commonwealth of Australia (c.2003)



Scale: 1:4,000 at A3
Map Projection: Transverse Mercator
Horizontal Datum: Geocentric Datum of Australia 1994
Grid: Map Grid of Australia, Zone 56



Figure 2.2



Legend

(No. Refers to Quadrats listed in Appendix A)

- (Summer 2007 - Habitat condition assessment
-) Summer 2007 - Quadrat
-) Spring 2008 - Quadrat
- (Autumn 2009 - Habitat condition assessment
-) Autumn 2009 - Quadrat
- Summer 2007 - Random meander transect
- Spring 2008 - Random meander transect
- Autumn 2009 - Random meander transect
- Spring 2011 - Town Creek Random meander transect
- Subject Site - Temporary Creek Crossings
- Subject Site - Footprint

Ancillary Sites

- Subject Site - Compound
- ▨ Subject Site - Stockpile
- Study Area



Biosis Research Pty. Ltd.
18-20 Mandible Street
Alexandria
NEW SOUTH WALES
2015

Figure 2.2.3: Location of flora survey effort

Date: 1 August 2012

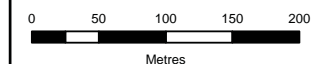
Drawn by: RS/JMS/ANP

File: 13194

Checked by: JC

Location: P:\15000s\15039\Mapping\Variation 2\Variation 2 figures\15039_S2_F2-2_SurveyFlora_130712.mxd

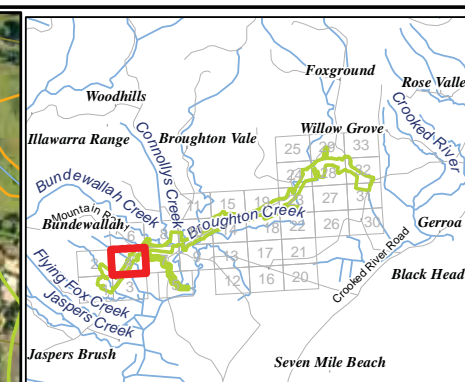
Acknowledgements:
Aerial imagery provided by ARUP
This product incorporates Data which is
copyright to the Commonwealth of Australia (c.2003)



Scale: 1:4,000 at A3
Map Projection: Transverse Mercator
Horizontal Datum: Geocentric Datum of Australia 1994
Grid: Map Grid of Australia, Zone 56



Figure 2.2



Legend

(No. Refers to Quadrats listed in Appendix A)

- (Summer 2007 - Habitat condition assessment
-) Summer 2007 - Quadrat
-) Spring 2008 - Quadrat
- (Autumn 2009 - Habitat condition assessment
-) Autumn 2009 - Quadrat
- Summer 2007 - Random meander transect
- Spring 2008 - Random meander transect
- Autumn 2009 - Random meander transect
- Spring 2011 - Town Creek Random meander transect

Subject Site - Temporary Creek Crossings

Subject Site - Footprint

Ancillary Sites

Subject Site - Compound

Subject Site - Stockpile

Study Area



Biosis Research Pty. Ltd.
18-20 Mandible Street
Alexandria
NEW SOUTH WALES
2015

Figure 2.2.4: Location of flora survey effort

Date: 1 August 2012

Drawn by: RS/JMS/ANP

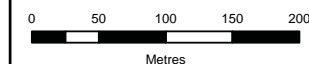
File: 13194

Checked by: JC

Location: P:\15000s\15039\Mapping\Variation 2\Variation 2 figures\15039_S2_F2-2_SurveyFlora_130712.mxd

Acknowledgements:

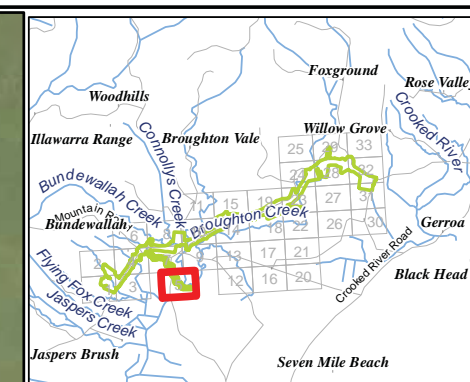
Aerial imagery provided by ARUP
This product incorporates Data which is
copyright to the Commonwealth of Australia (c.2003)



Scale: 1:4,000 at A3
Map Projection: Transverse Mercator
Horizontal Datum: Geocentric Datum of Australia 1994
Grid: Map Grid of Australia, Zone 56



Figure 2.2



Legend

(No. Refers to Quadrats listed in Appendix A)

- (Summer 2007 - Habitat condition assessment
-) Summer 2007 - Quadrat
-) Spring 2008 - Quadrat
- (Autumn 2009 - Habitat condition assessment
-) Autumn 2009 - Quadrat
- Summer 2007 - Random meander transect
- Spring 2008 - Random meander transect
- Autumn 2009 - Random meander transect
- Spring 2011 - Town Creek Random meander transect
- Subject Site - Temporary Creek Crossings
- Subject Site - Footprint

Ancillary Sites

- Subject Site - Compound
- ▨ Subject Site - Stockpile
- Study Area

Figure 2.2.5: Location of flora survey effort

Date: 1 August 2012

Drawn by: RS/JMS/ANP

File: 13194

Checked by: JC

Location: P:\15000s\15039\Mapping\Variation 2\Variation 2 figures\15039_S2_F2-2_SurveyFlora_130712.mxd

Acknowledgements:
Aerial imagery provided by ARUP
This product incorporates Data which is
copyright to the Commonwealth of Australia (c.2003)



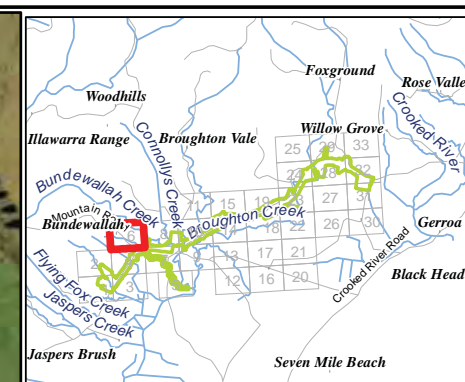
Scale: 1:4,000 at A3
Map Projection: Transverse Mercator
Horizontal Datum: Geocentric Datum of Australia 1994
Grid: Map Grid of Australia, Zone 56

Ü

Figure 2.2



Biosis Research Pty. Ltd.
18-20 Mandible Street
Alexandria
NEW SOUTH WALES
2015



Legend

(No. Refers to Quadrats listed in Appendix A)

- (Summer 2007 - Habitat condition assessment
-) Summer 2007 - Quadrat
-) Spring 2008 - Quadrat
- (Autumn 2009 - Habitat condition assessment
-) Autumn 2009 - Quadrat
- Summer 2007 - Random meander transect
- Spring 2008 - Random meander transect
- Autumn 2009 - Random meander transect
- Spring 2011 - Town Creek Random meander transect

Subject Site - Temporary Creek Crossings

Subject Site - Footprint

Ancillary Sites

Subject Site - Compound

Subject Site - Stockpile

Study Area



Biosis Research Pty. Ltd.
18-20 Mandible Street
Alexandria
NEW SOUTH WALES
2015

Figure 2.2.6: Location of flora survey effort

Date: 1 August 2012

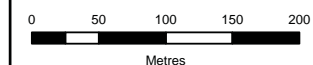
Drawn by: RS/JMS/ANP

File: 13194

Checked by: JC

Location: P:\15000s\15039\Mapping\Variation 2\Variation 2 figures\15039_S2_F2-2_SurveyFlora_130712.mxd

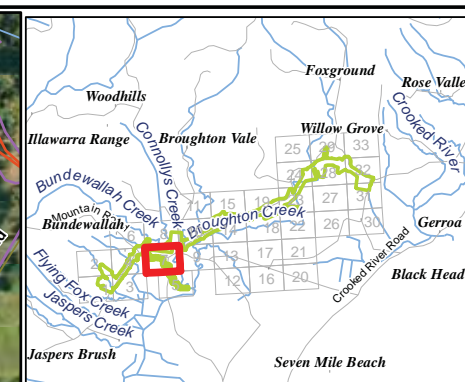
Acknowledgements:
Aerial imagery provided by ARUP
This product incorporates Data which is
copyright to the Commonwealth of Australia (c.2003)



Scale: 1:4,000 at A3
Map Projection: Transverse Mercator
Horizontal Datum: Geocentric Datum of Australia 1994
Grid: Map Grid of Australia, Zone 56



Figure 2.2



Legend

(No. Refers to Quadrats listed in Appendix A)

- (Summer 2007 - Habitat condition assessment
-) Summer 2007 - Quadrat
-) Spring 2008 - Quadrat
- (Autumn 2009 - Habitat condition assessment
-) Autumn 2009 - Quadrat

- Summer 2007 - Random meander transect
- Spring 2008 - Random meander transect
- Autumn 2009 - Random meander transect
- Spring 2011 - Town Creek Random meander transect

■ Subject Site - Temporary Creek Crossings

□ Subject Site - Footprint

Ancillary Sites

■ Subject Site - Compound

▨ Subject Site - Stockpile

□ Study Area



Biosis Research Pty. Ltd.
18-20 Mandible Street
Alexandria
NEW SOUTH WALES
2015

Figure 2.2.7: Location of flora survey effort

Date: 1 August 2012

Drawn by: RS/JMS/ANP

File: 13194

Checked by: JC

Location: P:\15000s\15039\Mapping\Variation 2\Variation 2 figures\15039_S2_F2-2_SurveyFlora_130712.mxd

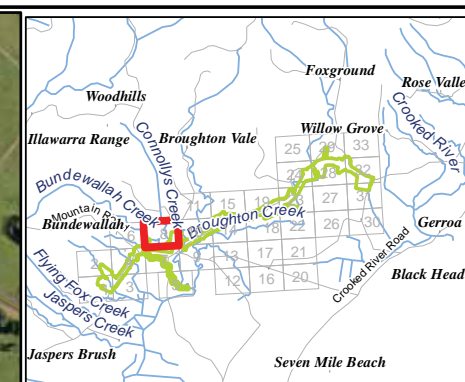
Acknowledgements:
Aerial imagery provided by ARUP
This product incorporates Data which is
copyright to the Commonwealth of Australia (c.2003)



Scale: 1:4,000 at A3
Map Projection: Transverse Mercator
Horizontal Datum: Geocentric Datum of Australia 1994
Grid: Map Grid of Australia, Zone 56



Figure 2.2



Legend

(No. Refers to Quadrats listed in Appendix A)

- (Summer 2007 - Habitat condition assessment
-) Summer 2007 - Quadrat
-) Spring 2008 - Quadrat
- (Autumn 2009 - Habitat condition assessment
-) Autumn 2009 - Quadrat
- Summer 2007 - Random meander transect
- Spring 2008 - Random meander transect
- Autumn 2009 - Random meander transect
- Spring 2011 - Town Creek Random meander transect

■ Subject Site - Temporary Creek Crossings

□ Subject Site - Footprint

Ancillary Sites

■ Subject Site - Compound

▨ Subject Site - Stockpile

□ Study Area



Biosis Research Pty. Ltd.
18-20 Mandible Street
Alexandria
NEW SOUTH WALES
2015

Figure 2.2.8: Location of flora survey effort

Date: 1 August 2012

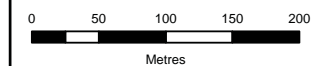
Drawn by: RS/JMS/ANP

File: 13194

Checked by: JC

Location: P:\15000s\15039\Mapping\Variation 2\Variation 2 figures\15039_S2_F2-2_SurveyFlora_130712.mxd

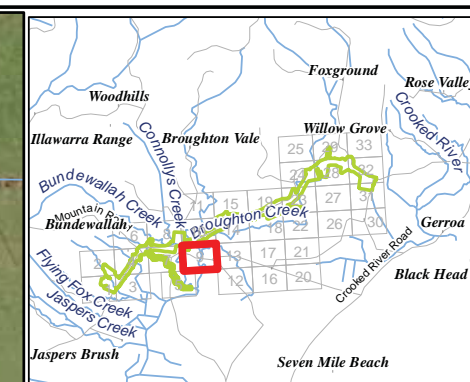
Acknowledgements:
Aerial imagery provided by ARUP
This product incorporates Data which is
copyright to the Commonwealth of Australia (c.2003)



Scale: 1:4,000 at A3
Map Projection: Transverse Mercator
Horizontal Datum: Geocentric Datum of Australia 1994
Grid: Map Grid of Australia, Zone 56



Figure 2.2



Legend

(No. Refers to Quadrats listed in Appendix A)

- (Summer 2007 - Habitat condition assessment
-) Summer 2007 - Quadrat
-) Spring 2008 - Quadrat
- (Autumn 2009 - Habitat condition assessment
-) Autumn 2009 - Quadrat
- Summer 2007 - Random meander transect
- Spring 2008 - Random meander transect
- Autumn 2009 - Random meander transect
- Spring 2011 - Town Creek Random meander transect
- Subject Site - Temporary Creek Crossings
- Subject Site - Footprint

Ancillary Sites

- Subject Site - Compound
- ▨ Subject Site - Stockpile
- Study Area



Biosis Research Pty. Ltd.
18-20 Mandible Street
Alexandria
NEW SOUTH WALES
2015

Figure 2.2.9: Location of flora survey effort

Date: 1 August 2012

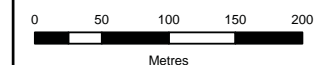
Drawn by: RS/JMS/ANP

File: 13194

Checked by: JC

Location: P:\15000s\15039\Mapping\Variation 2\Variation 2 figures\15039_S2_F2-2_SurveyFlora_130712.mxd

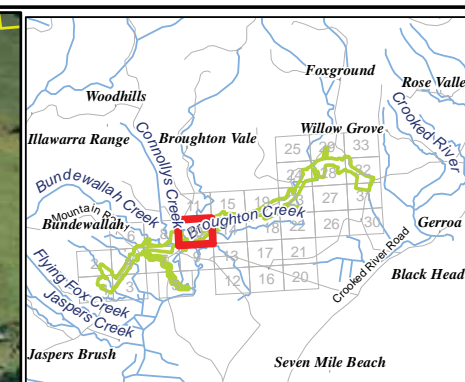
Acknowledgements:
Aerial imagery provided by ARUP
This product incorporates Data which is
copyright to the Commonwealth of Australia (c.2003)



Scale: 1:4,000 at A3
Map Projection: Transverse Mercator
Horizontal Datum: Geocentric Datum of Australia 1994
Grid: Map Grid of Australia, Zone 56



Figure 2.2



Legend

(No. Refers to Quadrats listed in Appendix A)

- (Summer 2007 - Habitat condition assessment
-) Summer 2007 - Quadrat
-) Spring 2008 - Quadrat
- (Autumn 2009 - Habitat condition assessment
-) Autumn 2009 - Quadrat
- Summer 2007 - Random meander transect
- Spring 2008 - Random meander transect
- Autumn 2009 - Random meander transect
- Spring 2011 - Town Creek Random meander transect

Yellow Subject Site - Temporary Creek Crossings

Orange Subject Site - Footprint

Ancillary Sites

Red Subject Site - Compound

Red hatched Subject Site - Stockpile

Green Study Area



Biosis Research Pty. Ltd.
18-20 Mandible Street
Alexandria
NEW SOUTH WALES
2015

Figure 2.2.10: Location of flora survey effort

Date: 1 August 2012

Drawn by: RS/JMS/ANP

File: 13194

Checked by: JC

Location: P:\15000s\15039\Mapping\Variation 2\Variation 2 figures\15039_S2_F2-2_SurveyFlora_130712.mxd

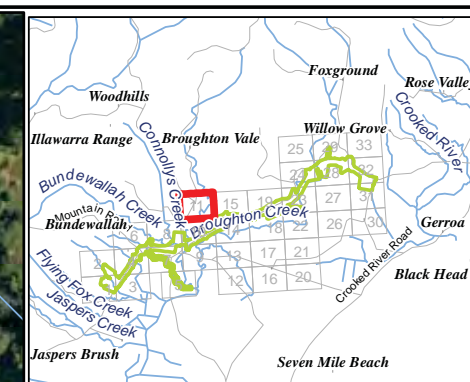
Acknowledgements:
Aerial imagery provided by ARUP
This product incorporates Data which is
copyright to the Commonwealth of Australia (c.2003)



Scale: 1:4,000 at A3
Map Projection: Transverse Mercator
Horizontal Datum: Geocentric Datum of Australia 1994
Grid: Map Grid of Australia, Zone 56



Figure 2.2



Legend

(No. Refers to Quadrats listed in Appendix A)

- (Summer 2007 - Habitat condition assessment
-) Summer 2007 - Quadrat
-) Spring 2008 - Quadrat
- (Autumn 2009 - Habitat condition assessment
-) Autumn 2009 - Quadrat
- Summer 2007 - Random meander transect
- Spring 2008 - Random meander transect
- Autumn 2009 - Random meander transect
- Spring 2011 - Town Creek Random meander transect

Subject Site - Temporary Creek Crossings

Subject Site - Footprint

Ancillary Sites

Subject Site - Compound

Subject Site - Stockpile

Study Area



Biosis Research Pty. Ltd.
18-20 Mandible Street
Alexandria
NEW SOUTH WALES
2015

Figure 2.2.11: Location of flora survey effort

Date: 1 August 2012

Drawn by: RS/JMS/ANP

File: 13194

Checked by: JC

Location: P:\15000s\15039\Mapping\Variation 2\Variation 2 figures\15039_S2_F2-2_SurveyFlora_130712.mxd

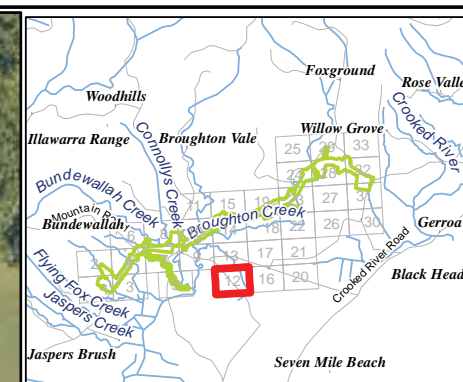
Acknowledgements:
Aerial imagery provided by ARUP
This product incorporates Data which is
copyright to the Commonwealth of Australia (c.2003)



Scale: 1:4,000 at A3
Map Projection: Transverse Mercator
Horizontal Datum: Geocentric Datum of Australia 1994
Grid: Map Grid of Australia, Zone 56



Figure 2.2



Legend

(No. Refers to Quadrats listed in Appendix A)

- (Summer 2007 - Habitat condition assessment
-) Summer 2007 - Quadrat
-) Spring 2008 - Quadrat
- (Autumn 2009 - Habitat condition assessment
-) Autumn 2009 - Quadrat

- Summer 2007 - Random meander transect
- Spring 2008 - Random meander transect
- Autumn 2009 - Random meander transect
- Spring 2011 - Town Creek Random meander transect

Subject Site - Temporary Creek Crossings

Subject Site - Footprint

Ancillary Sites

Subject Site - Compound

Subject Site - Stockpile

Study Area



BIOSIS Research Pty. Ltd.
18-20 Mandible Street
Alexandria
NEW SOUTH WALES
2015

Figure 2.2.12: Location of flora survey effort

Date: 1 August 2012

Drawn by: RS/JMS/ANP

File: 13194

Checked by: JC

Location: P:\15000s\15039\Mapping\Variation 2\Variation 2 figures\15039_S2_F2-2_SurveyFlora_130712.mxd

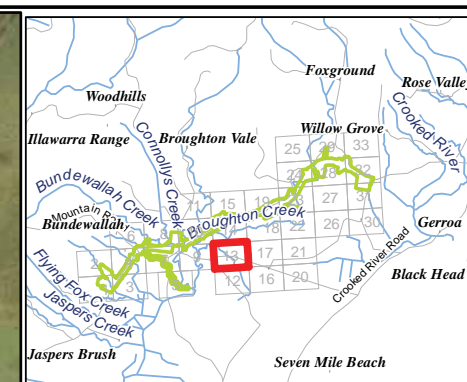
Acknowledgements:
Aerial imagery provided by ARUP
This product incorporates Data which is
copyright to the Commonwealth of Australia (c.2003)



Scale: 1:4,000 at A3
Map Projection: Transverse Mercator
Horizontal Datum: Geocentric Datum of Australia 1994
Grid: Map Grid of Australia, Zone 56



Figure 2.2



Legend

(No. Refers to Quadrats listed in Appendix A)

- (Summer 2007 - Habitat condition assessment
-) Summer 2007 - Quadrat
-) Spring 2008 - Quadrat
- (Autumn 2009 - Habitat condition assessment
-) Autumn 2009 - Quadrat
- Summer 2007 - Random meander transect
- Spring 2008 - Random meander transect
- Autumn 2009 - Random meander transect
- Spring 2011 - Town Creek Random meander transect
- Subject Site - Temporary Creek Crossings
- Subject Site - Footprint

Ancillary Sites

- Subject Site - Compound
- ▨ Subject Site - Stockpile
- Study Area



Biosis Research Pty. Ltd.
18-20 Mandible Street
Alexandria
NEW SOUTH WALES
2015

Figure 2.2.13: Location of flora survey effort

Date: 1 August 2012

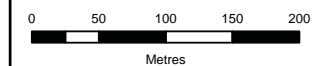
Drawn by: RS/JMS/ANP

File: 13194

Checked by: JC

Location: P:\15000s\15039\Mapping\Variation 2\Figures\15039_S2_F2-2_SurveyFlora_130712.mxd

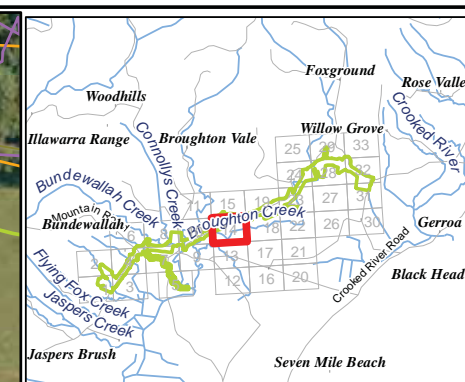
Acknowledgements:
Aerial imagery provided by ARUP
This product incorporates Data which is
copyright to the Commonwealth of Australia (c.2003)



Scale: 1:4,000 at A3
Map Projection: Transverse Mercator
Horizontal Datum: Geocentric Datum of Australia 1994
Grid: Map Grid of Australia, Zone 56



Figure 2.2



Legend

(No. Refers to Quadrats listed in Appendix A)

- (Summer 2007 - Habitat condition assessment
-) Summer 2007 - Quadrat
-) Spring 2008 - Quadrat
- (Autumn 2009 - Habitat condition assessment
-) Autumn 2009 - Quadrat
- Summer 2007 - Random meander transect
- Spring 2008 - Random meander transect
- Autumn 2009 - Random meander transect
- Spring 2011 - Town Creek Random meander transect
- Subject Site - Temporary Creek Crossings
- Subject Site - Footprint

Ancillary Sites

- Subject Site - Compound
- ▨ Subject Site - Stockpile
- Study Area



Biosis Research Pty. Ltd.
18-20 Mandible Street
Alexandria
NEW SOUTH WALES
2015

Figure 2.2.14: Location of flora survey effort

Date: 1 August 2012

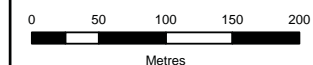
Drawn by: RS/JMS/ANP

File: 13194

Checked by: JC

Location: P:\15000s\15039\Mapping\Variation 2\Variation 2 figures\15039_S2_F2-2_SurveyFlora_130712.mxd

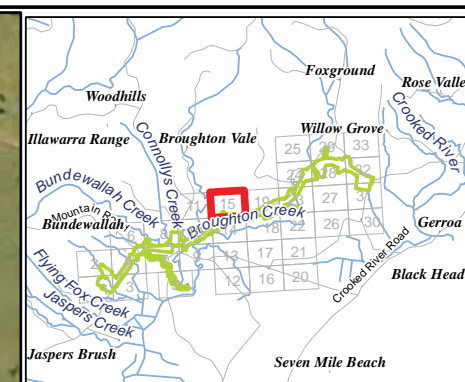
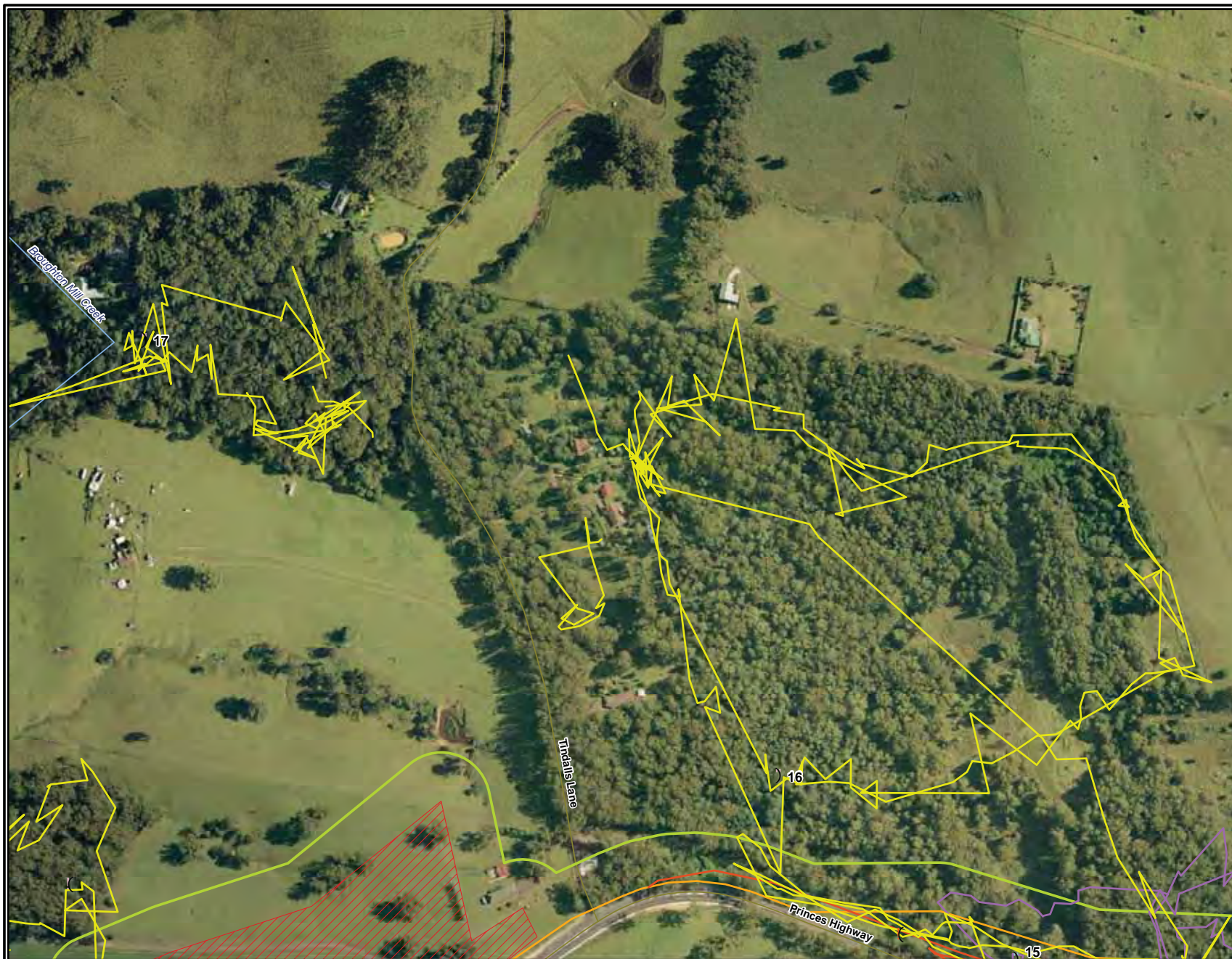
Acknowledgements:
Aerial imagery provided by ARUP
This product incorporates Data which is
copyright to the Commonwealth of Australia (c.2003)



Scale: 1:4,000 at A3
Map Projection: Transverse Mercator
Horizontal Datum: Geocentric Datum of Australia 1994
Grid: Map Grid of Australia, Zone 56



Figure 2.2



Legend

(No. Refers to Quadrats listed in Appendix A)

- (Summer 2007 - Habitat condition assessment
-) Summer 2007 - Quadrat
-) Spring 2008 - Quadrat
- (Autumn 2009 - Habitat condition assessment
-) Autumn 2009 - Quadrat
- Summer 2007 - Random meander transect
- Spring 2008 - Random meander transect
- Autumn 2009 - Random meander transect
- Spring 2011 - Town Creek Random meander transect
- Subject Site - Temporary Creek Crossings
- Subject Site - Footprint

Ancillary Sites

- Subject Site - Compound
- ▨ Subject Site - Stockpile
- Study Area



BIOSIS Research Pty. Ltd.
18-20 Mandible Street
Alexandria
NEW SOUTH WALES
2015

Figure 2.2.15: Location of flora survey effort

Date: 1 August 2012

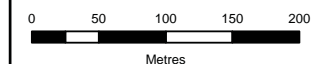
Drawn by: RS/JMS/ANP

File: 13194

Checked by: JC

Location: P:\15000s\15039\Mapping\Variation 2\Variation 2 figures\15039_S2_F2-2_SurveyFlora_130712.mxd

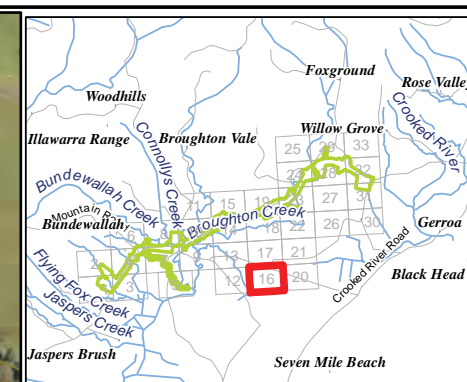
Acknowledgements:
Aerial imagery provided by ARUP
This product incorporates Data which is
copyright to the Commonwealth of Australia (c.2003)



Scale: 1:4,000 at A3
Map Projection: Transverse Mercator
Horizontal Datum: Geocentric Datum of Australia 1994
Grid: Map Grid of Australia, Zone 56



Figure 2.2



Legend

(No. Refers to Quadrats listed in Appendix A)

- (Summer 2007 - Habitat condition assessment
-) Summer 2007 - Quadrat
-) Spring 2008 - Quadrat
- (Autumn 2009 - Habitat condition assessment
-) Autumn 2009 - Quadrat
- Summer 2007 - Random meander transect
- Spring 2008 - Random meander transect
- Autumn 2009 - Random meander transect
- Spring 2011 - Town Creek Random meander transect
- Subject Site - Temporary Creek Crossings
- Subject Site - Footprint

Ancillary Sites

- Subject Site - Compound
- ▨ Subject Site - Stockpile
- Study Area



Biosis Research Pty. Ltd.
18-20 Mandible Street
Alexandria
NEW SOUTH WALES
2015

Figure 2.2.16: Location of flora survey effort

Date: 1 August 2012

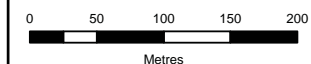
Drawn by: RS/JMS/ANP

File: 13194

Checked by: JC

Location: P:\15000s\15039\Mapping\Variation 2\Variation 2 figures\15039_S2_F2-2_SurveyFlora_130712.mxd

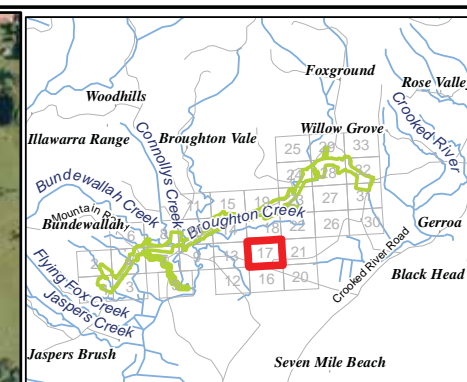
Acknowledgements:
Aerial imagery provided by ARUP
This product incorporates Data which is
copyright to the Commonwealth of Australia (c.2003)



Scale: 1:4,000 at A3
Map Projection: Transverse Mercator
Horizontal Datum: Geocentric Datum of Australia 1994
Grid: Map Grid of Australia, Zone 56



Figure 2.2



Legend

(No. Refers to Quadrats listed in Appendix A)

- (Summer 2007 - Habitat condition assessment
-) Summer 2007 - Quadrat
-) Spring 2008 - Quadrat
- (Autumn 2009 - Habitat condition assessment
-) Autumn 2009 - Quadrat
- Summer 2007 - Random meander transect
- Spring 2008 - Random meander transect
- Autumn 2009 - Random meander transect
- Spring 2011 - Town Creek Random meander transect

■ Subject Site - Temporary Creek Crossings

□ Subject Site - Footprint

Ancillary Sites

■ Subject Site - Compound

▨ Subject Site - Stockpile

□ Study Area



Biosis Research Pty. Ltd.
18-20 Mandible Street
Alexandria
NEW SOUTH WALES
2015

Figure 2.2.17: Location of flora survey effort

Date: 1 August 2012

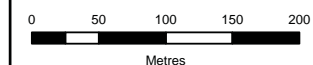
Drawn by: RS/JMS/ANP

File: 13194

Checked by: JC

Location: P:\15000s\15039\Mapping\Variation 2\Figures\15039_S2_F2-2_SurveyFlora_130712.mxd

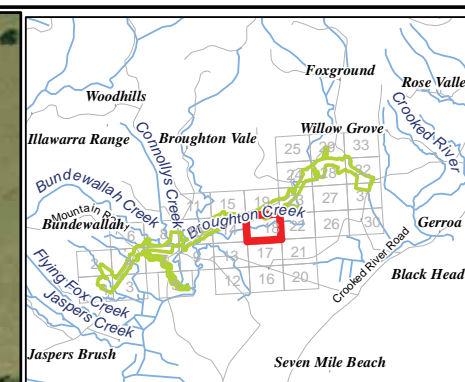
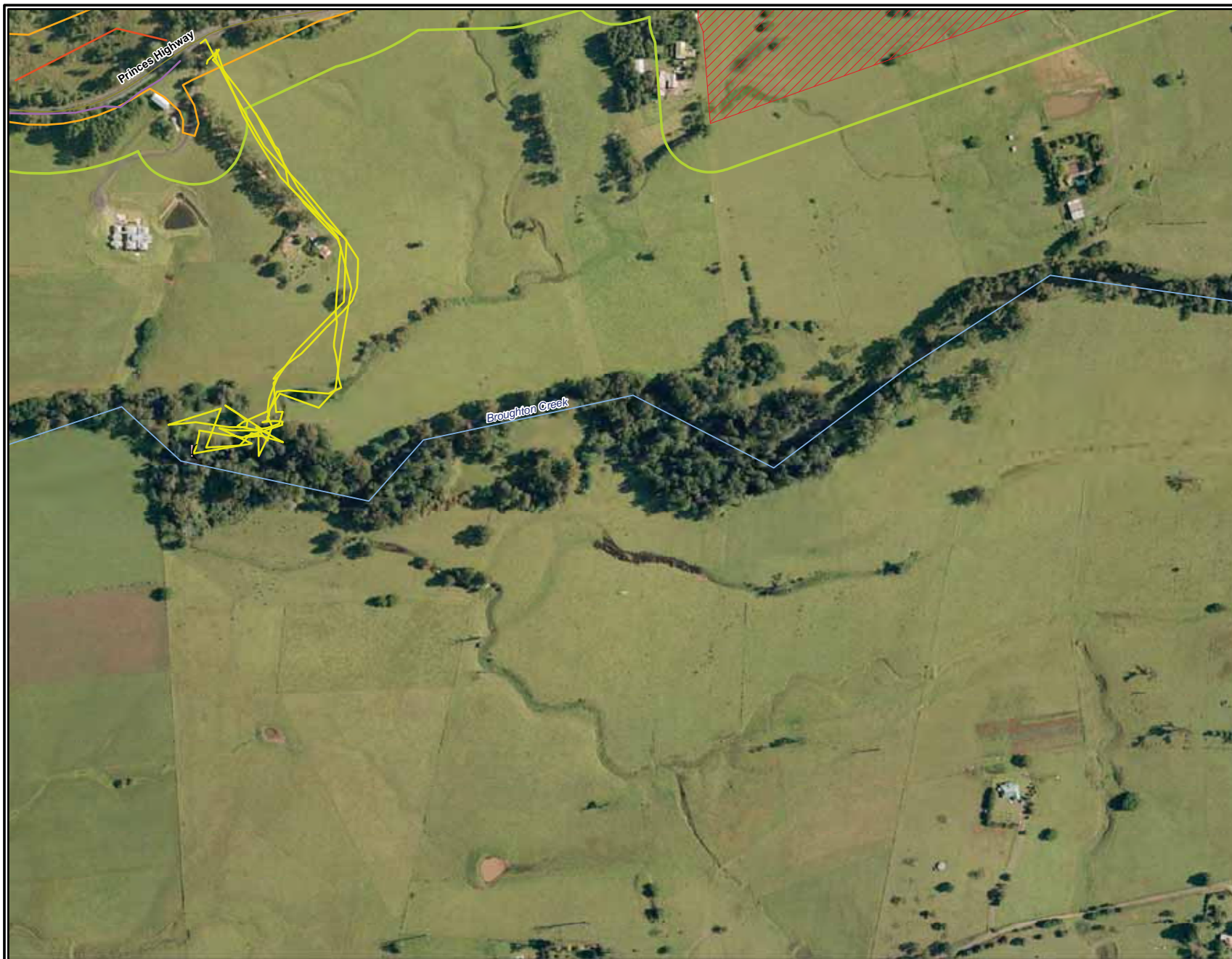
Acknowledgements:
Aerial imagery provided by ARUP
This product incorporates Data which is
copyright to the Commonwealth of Australia (c.2003)



Scale: 1:4,000 at A3
Map Projection: Transverse Mercator
Horizontal Datum: Geocentric Datum of Australia 1994
Grid: Map Grid of Australia, Zone 56



Figure 2.2



Legend

(No. Refers to Quadrats listed in Appendix A)

- (Summer 2007 - Habitat condition assessment
-) Summer 2007 - Quadrat
-) Spring 2008 - Quadrat
- (Autumn 2009 - Habitat condition assessment
-) Autumn 2009 - Quadrat
- Summer 2007 - Random meander transect
- Spring 2008 - Random meander transect
- Autumn 2009 - Random meander transect
- Spring 2011 - Town Creek Random meander transect
- Subject Site - Temporary Creek Crossings
- Subject Site - Footprint

Ancillary Sites

- Subject Site - Compound
- ▨ Subject Site - Stockpile
- Study Area



Biosis Research Pty. Ltd.
18-20 Mandible Street
Alexandria
NEW SOUTH WALES
2015

Figure 2.2.18: Location of flora survey effort

Date: 1 August 2012

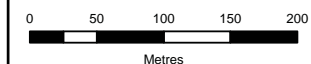
Drawn by: RS/JMS/ANP

File: 13194

Checked by: JC

Location: P:\15000s\15039\Mapping\Variation 2\Figures\15039_S2_F2-2_SurveyFlora_130712.mxd

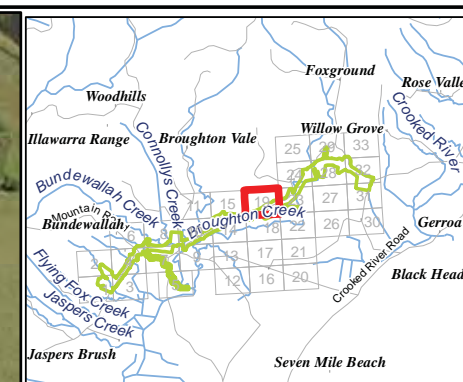
Acknowledgements:
Aerial imagery provided by ARUP
This product incorporates Data which is
copyright to the Commonwealth of Australia (c.2003)



Scale: 1:4,000 at A3
Map Projection: Transverse Mercator
Horizontal Datum: Geocentric Datum of Australia 1994
Grid: Map Grid of Australia, Zone 56



Figure 2.2



Legend

(No. Refers to Quadrats listed in Appendix A)

- (Summer 2007 - Habitat condition assessment
-) Summer 2007 - Quadrat
-) Spring 2008 - Quadrat
- (Autumn 2009 - Habitat condition assessment
-) Autumn 2009 - Quadrat
- Summer 2007 - Random meander transect
- Spring 2008 - Random meander transect
- Autumn 2009 - Random meander transect
- Spring 2011 - Town Creek Random meander transect

Subject Site - Temporary Creek Crossings

Subject Site - Footprint

Ancillary Sites

Subject Site - Compound

Subject Site - Stockpile

Study Area



Biosis Research Pty. Ltd.
18-20 Mandible Street
Alexandria
NEW SOUTH WALES
2015

Figure 2.2.19: Location of flora survey effort

Date: 1 August 2012

Drawn by: RS/JMS/ANP

File: 13194

Checked by: JC

Location: P:\15000s\15039\Mapping\Variation 2\Variation 2 figures\15039_S2_F2-2_SurveyFlora_130712.mxd

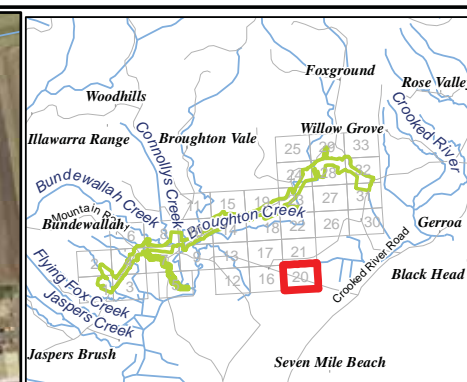
Acknowledgements:
Aerial imagery provided by ARUP
This product incorporates Data which is
copyright to the Commonwealth of Australia (c.2003)



Scale: 1:4,000 at A3
Map Projection: Transverse Mercator
Horizontal Datum: Geocentric Datum of Australia 1994
Grid: Map Grid of Australia, Zone 56



Figure 2.2



Legend

(No. Refers to Quadrats listed in Appendix A)

- (Summer 2007 - Habitat condition assessment
-) Summer 2007 - Quadrat
-) Spring 2008 - Quadrat
- (Autumn 2009 - Habitat condition assessment
-) Autumn 2009 - Quadrat
- Summer 2007 - Random meander transect
- Spring 2008 - Random meander transect
- Autumn 2009 - Random meander transect
- Spring 2011 - Town Creek Random meander transect

Subject Site - Temporary Creek Crossings

Subject Site - Footprint

Ancillary Sites

Subject Site - Compound

Subject Site - Stockpile

Study Area



Biosis Research Pty. Ltd.
18-20 Mandible Street
Alexandria
NEW SOUTH WALES
2015

Figure 2.2.20: Location of flora survey effort

Date: 1 August 2012

Drawn by: RS/JMS/ANP

File: 13194

Checked by: JC

Location: P:\15000s\15039\Mapping\Variation 2\Variation 2 figures\15039_S2_F2-2_SurveyFlora_130712.mxd

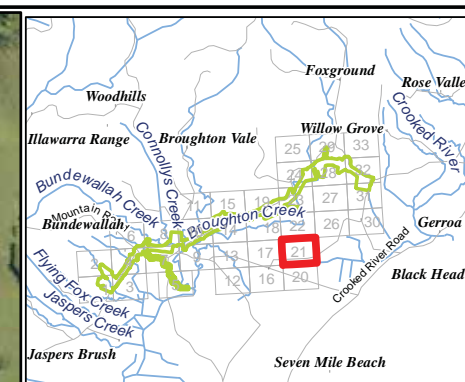
Acknowledgements:
Aerial imagery provided by ARUP
This product incorporates Data which is
copyright to the Commonwealth of Australia (c.2003)



Scale: 1:4,000 at A3
Map Projection: Transverse Mercator
Horizontal Datum: Geocentric Datum of Australia 1994
Grid: Map Grid of Australia, Zone 56



Figure 2.2



Legend

(No. Refers to Quadrats listed in Appendix A)

- (Summer 2007 - Habitat condition assessment
-) Summer 2007 - Quadrat
-) Spring 2008 - Quadrat
- (Autumn 2009 - Habitat condition assessment
-) Autumn 2009 - Quadrat
- Summer 2007 - Random meander transect
- Spring 2008 - Random meander transect
- Autumn 2009 - Random meander transect
- Spring 2011 - Town Creek Random meander transect
- Subject Site - Temporary Creek Crossings
- Subject Site - Footprint

Ancillary Sites

- Subject Site - Compound
- ▨ Subject Site - Stockpile
- Study Area



Biosis Research Pty. Ltd.
18-20 Mandible Street
Alexandria
NEW SOUTH WALES
2015

Figure 2.2.21: Location of flora survey effort

Date: 1 August 2012

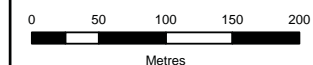
Drawn by: RS/JMS/ANP

File: 13194

Checked by: JC

Location: P:\15000s\15039\Mapping\Variation 2\Variation 2 figures\15039_S2_F2-2_SurveyFlora_130712.mxd

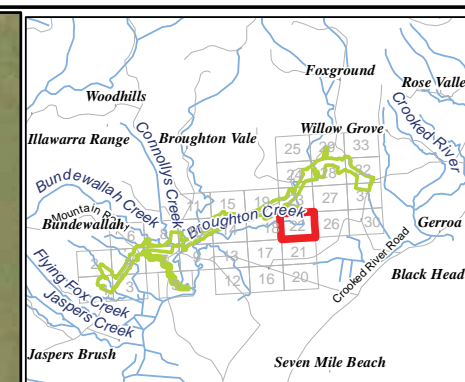
Acknowledgements:
Aerial imagery provided by ARUP
This product incorporates Data which is
copyright to the Commonwealth of Australia (c.2003)



Scale: 1:4,000 at A3
Map Projection: Transverse Mercator
Horizontal Datum: Geocentric Datum of Australia 1994
Grid: Map Grid of Australia, Zone 56



Figure 2.2



Legend

(No. Refers to Quadrats listed in Appendix A)

- (Summer 2007 - Habitat condition assessment
-) Summer 2007 - Quadrat
-) Spring 2008 - Quadrat
- (Autumn 2009 - Habitat condition assessment
-) Autumn 2009 - Quadrat
- Summer 2007 - Random meander transect
- Spring 2008 - Random meander transect
- Autumn 2009 - Random meander transect
- Spring 2011 - Town Creek Random meander transect
- Subject Site - Temporary Creek Crossings
- Subject Site - Footprint

Ancillary Sites

- Subject Site - Compound
- ▨ Subject Site - Stockpile
- Study Area



Biosis Research Pty. Ltd.
18-20 Mandible Street
Alexandria
NEW SOUTH WALES
2015

Figure 2.2.22: Location of flora survey effort

Date: 1 August 2012

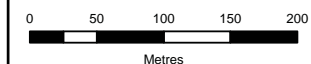
Drawn by: RS/JMS/ANP

File: 13194

Checked by: JC

Location: P:\15000s\15039\Mapping\Variation 2\Variation 2 figures\15039_S2_F2-2_SurveyFlora_130712.mxd

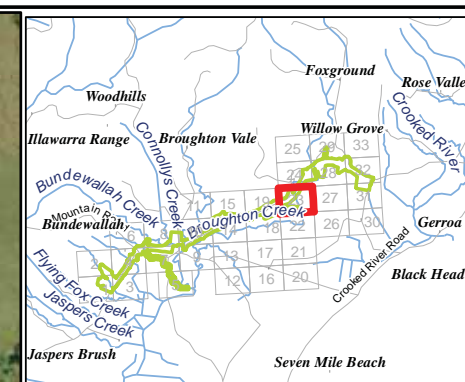
Acknowledgements:
Aerial imagery provided by ARUP
This product incorporates Data which is
copyright to the Commonwealth of Australia (c.2003)



Scale: 1:4,000 at A3
Map Projection: Transverse Mercator
Horizontal Datum: Geocentric Datum of Australia 1994
Grid: Map Grid of Australia, Zone 56



Figure 2.2



Legend

(No. Refers to Quadrats listed in Appendix A)

- (Summer 2007 - Habitat condition assessment
-) Summer 2007 - Quadrat
-) Spring 2008 - Quadrat
- (Autumn 2009 - Habitat condition assessment
-) Autumn 2009 - Quadrat
- Summer 2007 - Random meander transect
- Spring 2008 - Random meander transect
- Autumn 2009 - Random meander transect
- Spring 2011 - Town Creek Random meander transect

■ Subject Site - Temporary Creek Crossings

□ Subject Site - Footprint

Ancillary Sites

■ Subject Site - Compound

▨ Subject Site - Stockpile

□ Study Area



Biosis Research Pty. Ltd.
18-20 Mandible Street
Alexandria
NEW SOUTH WALES
2015

Figure 2.2.23: Location of flora survey effort

Date: 1 August 2012

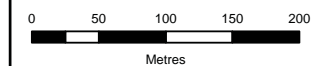
Drawn by: RS/JMS/ANP

File: 13194

Checked by: JC

Location: P:\15000s\15039\Mapping\Variation 2\Figures\15039_S2_F2-2_SurveyFlora_130712.mxd

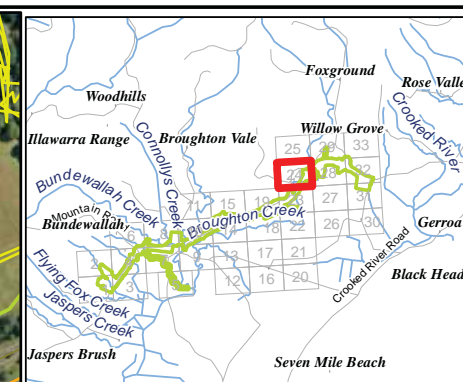
Acknowledgements:
Aerial imagery provided by ARUP
This product incorporates Data which is
copyright to the Commonwealth of Australia (c.2003)



Scale: 1:4,000 at A3
Map Projection: Transverse Mercator
Horizontal Datum: Geocentric Datum of Australia 1994
Grid: Map Grid of Australia, Zone 56



Figure 2.2



Legend

(No. Refers to Quadrats listed in Appendix A)

- (Summer 2007 - Habitat condition assessment
-) Summer 2007 - Quadrat
-) Spring 2008 - Quadrat
- (Autumn 2009 - Habitat condition assessment
-) Autumn 2009 - Quadrat
- Summer 2007 - Random meander transect
- Spring 2008 - Random meander transect
- Autumn 2009 - Random meander transect
- Spring 2011 - Town Creek Random meander transect
- Subject Site - Temporary Creek Crossings
- Subject Site - Footprint

Ancillary Sites

- Subject Site - Compound
- ▨ Subject Site - Stockpile
- Study Area



Biosis Research Pty. Ltd.
18-20 Mandible Street
Alexandria
NEW SOUTH WALES
2015

Figure 2.2.24: Location of flora survey effort

Date: 1 August 2012

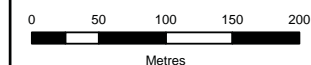
Drawn by: RS/JMS/ANP

File: 13194

Checked by: JC

Location: P:\15000s\15039\Mapping\Variation 2\Figures\15039_S2_F2-2_SurveyFlora_130712.mxd

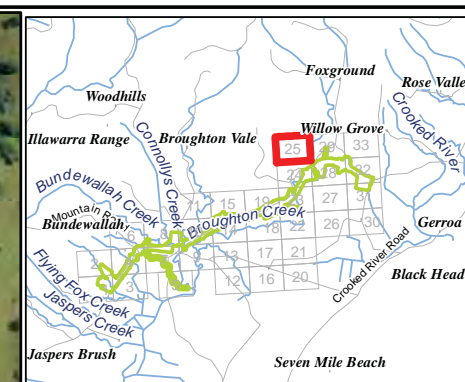
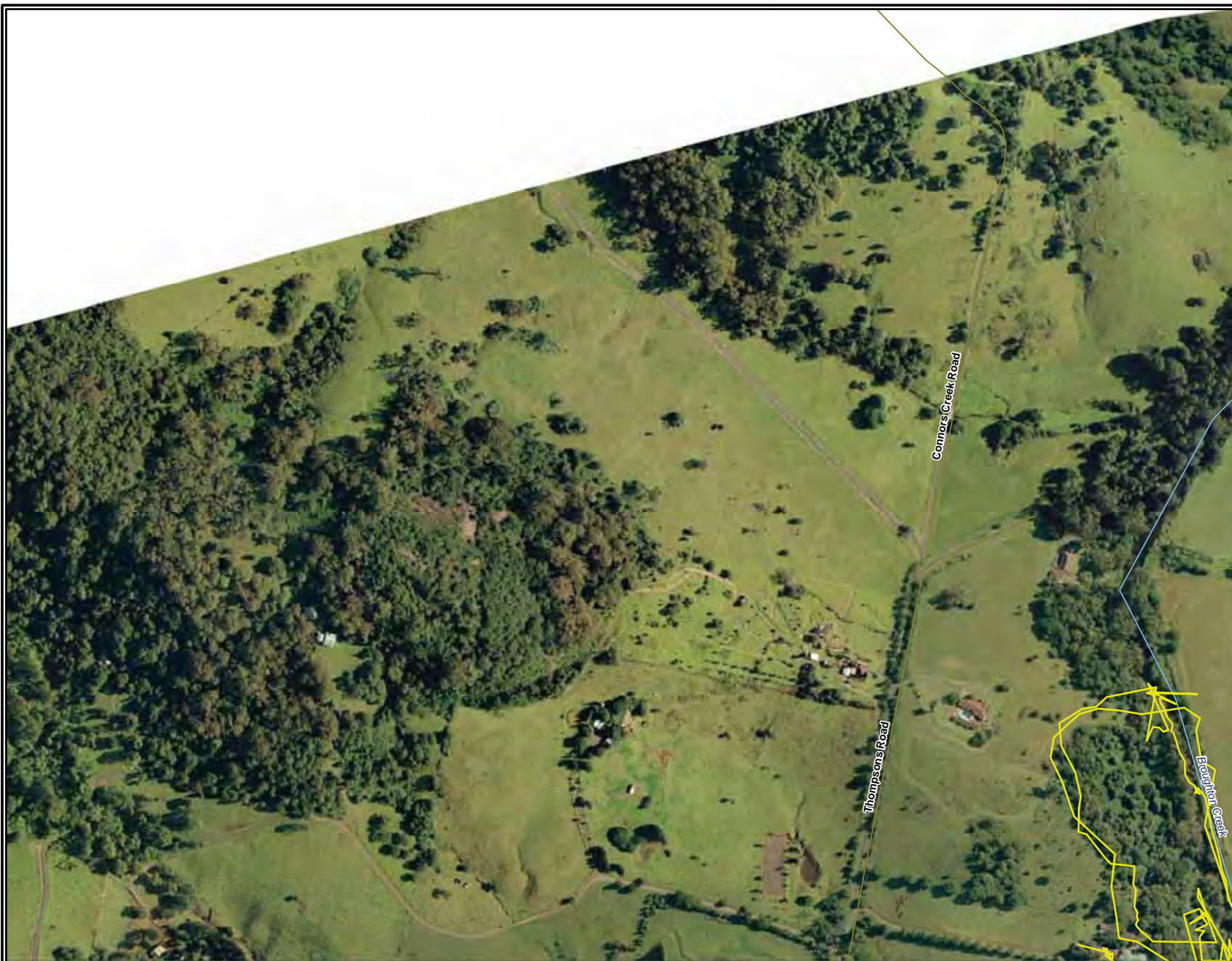
Acknowledgements:
Aerial imagery provided by ARUP
This product incorporates Data which is
copyright to the Commonwealth of Australia (c.2003)



Scale: 1:4,000 at A3
Map Projection: Transverse Mercator
Horizontal Datum: Geocentric Datum of Australia 1994
Grid: Map Grid of Australia, Zone 56



Figure 2.2



Legend

(No. Refers to Quadrats listed in Appendix A)

- (Summer 2007 - Habitat condition assessment
-) Summer 2007 - Quadrat
-) Spring 2008 - Quadrat
- (Autumn 2009 - Habitat condition assessment
-) Autumn 2009 - Quadrat

- Summer 2007 - Random meander transect
- Spring 2008 - Random meander transect
- Autumn 2009 - Random meander transect
- Spring 2011 - Town Creek Random meander transect

■ Subject Site - Temporary Creek Crossings

□ Subject Site - Footprint

Ancillary Sites

■ Subject Site - Compound

▨ Subject Site - Stockpile

□ Study Area



Biosis Research Pty. Ltd.
18-20 Mandible Street
Alexandria
NEW SOUTH WALES
2015

Figure 2.2.25: Location of flora survey effort

Date: 1 August 2012

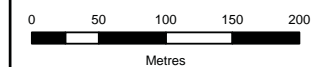
Drawn by: RS/JMS/ANP

File: 13194

Checked by: JC

Location: P:\15000s\15039\Mapping\Variation 2\Variation 2 figures\15039_S2_F2-2_SurveyFlora_130712.mxd

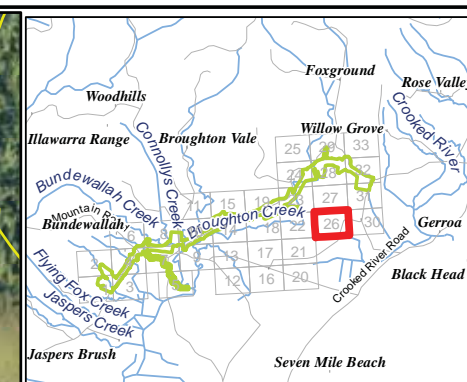
Acknowledgements:
Aerial imagery provided by ARUP
This product incorporates Data which is
copyright to the Commonwealth of Australia (c.2003)



Scale: 1:4,000 at A3
Map Projection: Transverse Mercator
Horizontal Datum: Geocentric Datum of Australia 1994
Grid: Map Grid of Australia, Zone 56



Figure 2.2



Legend

(No. Refers to Quadrats listed in Appendix A)

- (Summer 2007 - Habitat condition assessment
-) Summer 2007 - Quadrat
-) Spring 2008 - Quadrat
- (Autumn 2009 - Habitat condition assessment
-) Autumn 2009 - Quadrat
- Summer 2007 - Random meander transect
- Spring 2008 - Random meander transect
- Autumn 2009 - Random meander transect
- Spring 2011 - Town Creek Random meander transect
- Subject Site - Temporary Creek Crossings
- Subject Site - Footprint

Ancillary Sites

- Subject Site - Compound
- ▨ Subject Site - Stockpile
- Study Area



Biosis Research Pty. Ltd.
18-20 Mandible Street
Alexandria
NEW SOUTH WALES
2015

Figure 2.2.26: Location of flora survey effort

Date: 1 August 2012

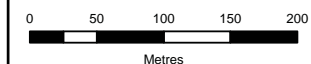
Drawn by: RS/JMS/ANP

File: 13194

Checked by: JC

Location: P:\15000s\15039\Mapping\Variation 2\Figures\15039_S2_F2-2_SurveyFlora_130712.mxd

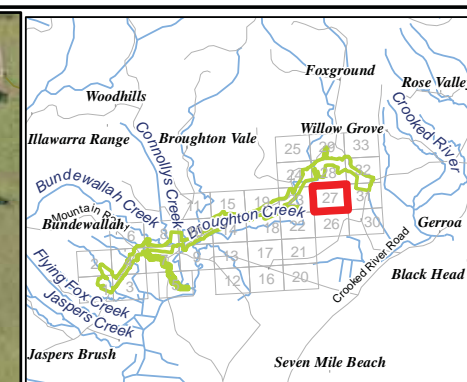
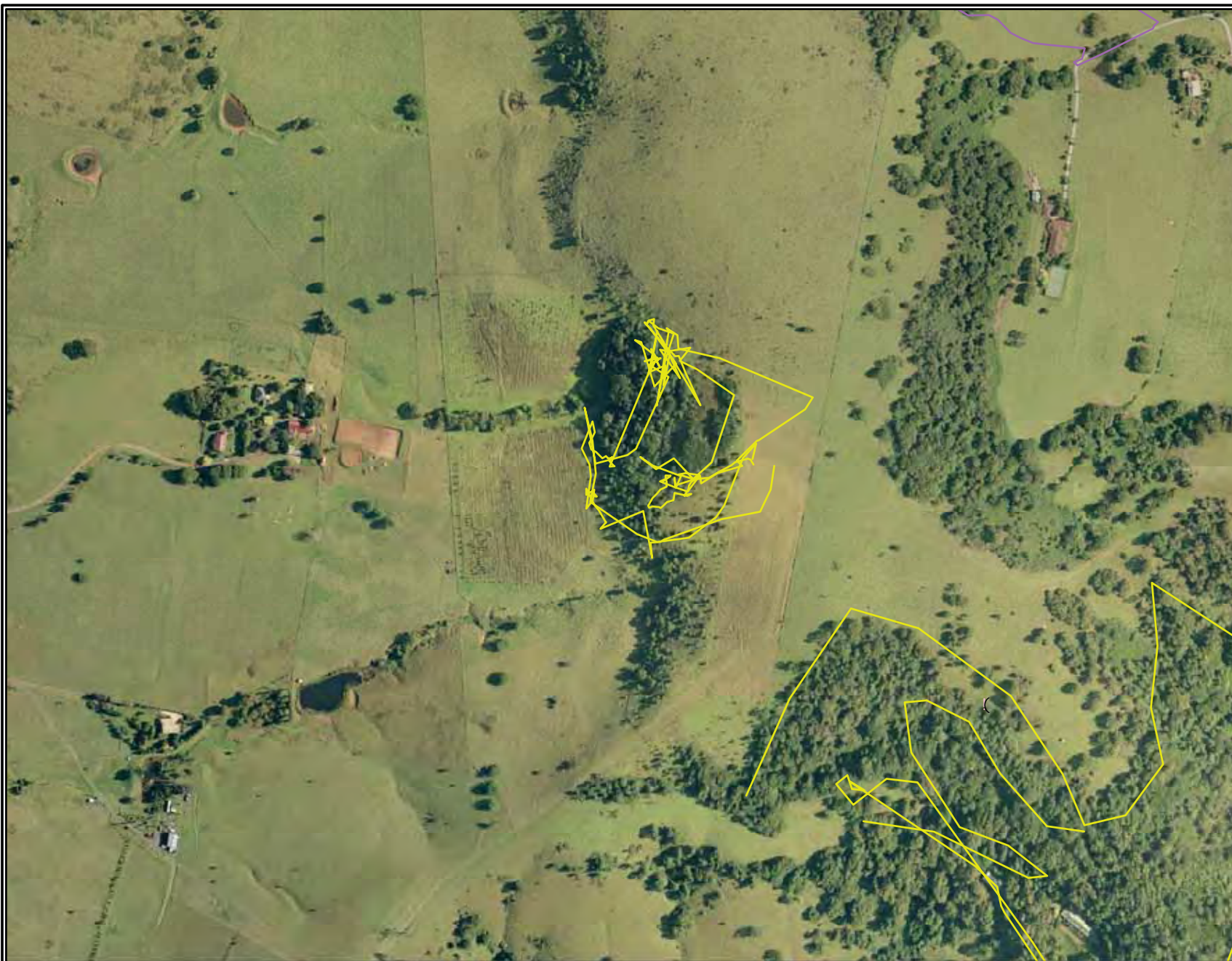
Acknowledgements:
Aerial imagery provided by ARUP
This product incorporates Data which is
copyright to the Commonwealth of Australia (c.2003)



Scale: 1:4,000 at A3
Map Projection: Transverse Mercator
Horizontal Datum: Geocentric Datum of Australia 1994
Grid: Map Grid of Australia, Zone 56

Ü

Figure 2.2



Legend

(No. Refers to Quadrats listed in Appendix A)

- (Summer 2007 - Habitat condition assessment
-) Summer 2007 - Quadrat
-) Spring 2008 - Quadrat
- (Autumn 2009 - Habitat condition assessment
-) Autumn 2009 - Quadrat
- Summer 2007 - Random meander transect
- Spring 2008 - Random meander transect
- Autumn 2009 - Random meander transect
- Spring 2011 - Town Creek Random meander transect

■ Subject Site - Temporary Creek Crossings

□ Subject Site - Footprint

Ancillary Sites

■ Subject Site - Compound

▨ Subject Site - Stockpile

□ Study Area



Biosis Research Pty. Ltd.
18-20 Mandible Street
Alexandria
NEW SOUTH WALES
2015

Figure 2.2.27: Location of flora survey effort

Date: 1 August 2012

Drawn by: RS/JMS/ANP

File: 13194

Checked by: JC

Location: P:\15000s\15039\Mapping\Variation 2\Variation 2 figures\15039_S2_F2-2_SurveyFlora_130712.mxd

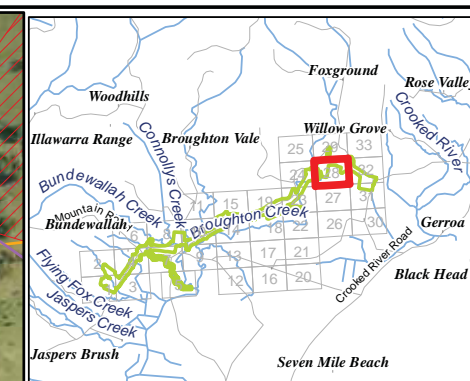
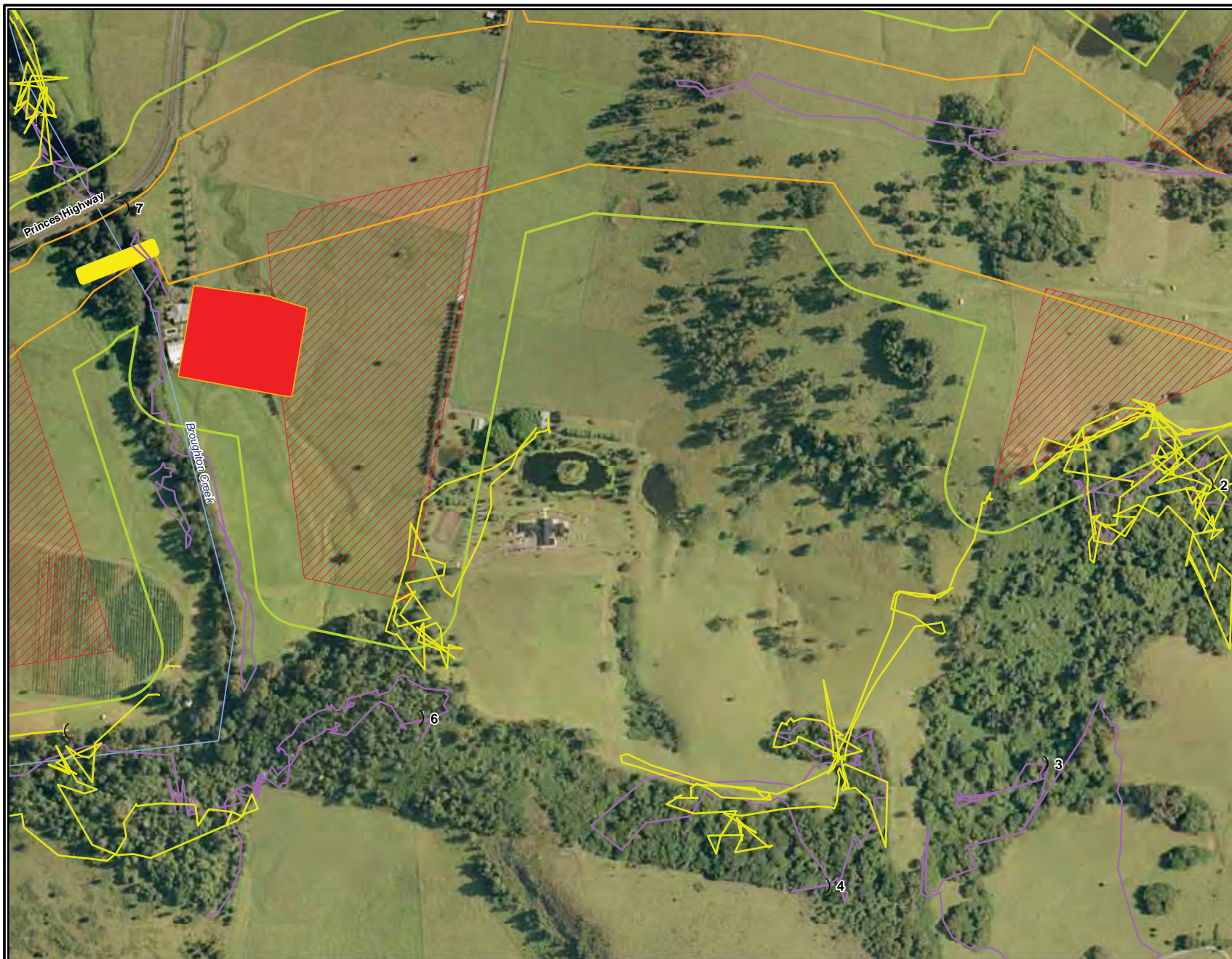
Acknowledgements:
Aerial imagery provided by ARUP
This product incorporates Data which is
copyright to the Commonwealth of Australia (c.2003)



Scale: 1:4,000 at A3
Map Projection: Transverse Mercator
Horizontal Datum: Geocentric Datum of Australia 1994
Grid: Map Grid of Australia, Zone 56



Figure 2.2



Legend

(No. Refers to Quadrats listed in Appendix A)

- (Summer 2007 - Habitat condition assessment
-) Summer 2007 - Quadrat
-) Spring 2008 - Quadrat
- (Autumn 2009 - Habitat condition assessment
-) Autumn 2009 - Quadrat
- Summer 2007 - Random meander transect
- Spring 2008 - Random meander transect
- Autumn 2009 - Random meander transect
- Spring 2011 - Town Creek Random meander transect

Subject Site - Temporary Creek Crossings

Subject Site - Footprint

Ancillary Sites

Subject Site - Compound

Subject Site - Stockpile

Study Area



Biosis Research Pty. Ltd.
18-20 Mandible Street
Alexandria
NEW SOUTH WALES
2015

Figure 2.2.28: Location of flora survey effort

Date: 1 August 2012

Drawn by: RS/JMS/ANP

File: 13194

Checked by: JC

Location: P:\15000s\15039\Mapping\Variation 2\Variation 2 figures\15039_S2_F2-2_SurveyFlora_130712.mxd

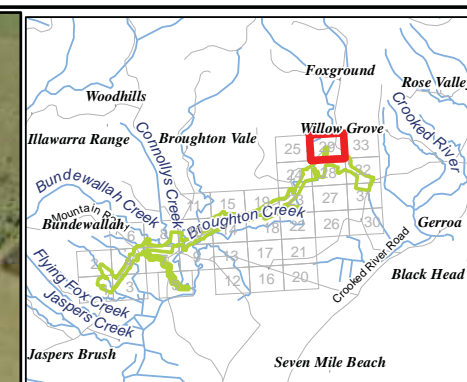
Acknowledgements:
Aerial imagery provided by ARUP
This product incorporates Data which is
copyright to the Commonwealth of Australia (c.2003)



Scale: 1:4,000 at A3
Map Projection: Transverse Mercator
Horizontal Datum: Geocentric Datum of Australia 1994
Grid: Map Grid of Australia, Zone 56



Figure 2.2



Legend

(No. Refers to Quadrats listed in Appendix A)

- (Summer 2007 - Habitat condition assessment
-) Summer 2007 - Quadrat
-) Spring 2008 - Quadrat
- (Autumn 2009 - Habitat condition assessment
-) Autumn 2009 - Quadrat
- Summer 2007 - Random meander transect
- Spring 2008 - Random meander transect
- Autumn 2009 - Random meander transect
- Spring 2011 - Town Creek Random meander transect

Subject Site - Temporary Creek Crossings

Subject Site - Footprint

Ancillary Sites

Subject Site - Compound

Subject Site - Stockpile

Study Area



Biosis Research Pty. Ltd.
18-20 Mandible Street
Alexandria
NEW SOUTH WALES
2015

Figure 2.2.29: Location of flora survey effort

Date: 1 August 2012

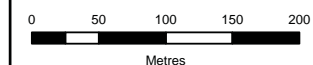
Drawn by: RS/JMS/ANP

File: 13194

Checked by: JC

Location: P:\15000s\15039\Mapping\Variation 2\Variation 2 figures\15039_S2_F2-2_SurveyFlora_130712.mxd

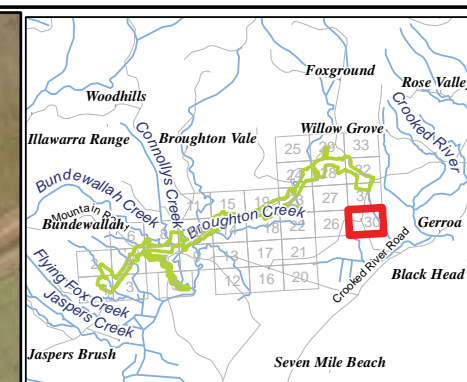
Acknowledgements:
Aerial imagery provided by ARUP
This product incorporates Data which is
copyright to the Commonwealth of Australia (c.2003)



Scale: 1:4,000 at A3
Map Projection: Transverse Mercator
Horizontal Datum: Geocentric Datum of Australia 1994
Grid: Map Grid of Australia, Zone 56



Figure 2.2



Legend

(No. Refers to Quadrats listed in Appendix A)

- (Summer 2007 - Habitat condition assessment
-) Summer 2007 - Quadrat
-) Spring 2008 - Quadrat
- (Autumn 2009 - Habitat condition assessment
-) Autumn 2009 - Quadrat
- Summer 2007 - Random meander transect
- Spring 2008 - Random meander transect
- Autumn 2009 - Random meander transect
- Spring 2011 - Town Creek Random meander transect
- Subject Site - Temporary Creek Crossings
- Subject Site - Footprint

Ancillary Sites

- Subject Site - Compound
- ▨ Subject Site - Stockpile
- Study Area



Biosis Research Pty. Ltd.
18-20 Mandible Street
Alexandria
NEW SOUTH WALES
2015

Figure 2.2.30: Location of flora survey effort

Date: 1 August 2012

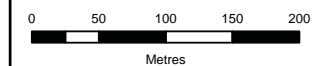
Drawn by: RS/JMS/ANP

File: 13194

Checked by: JC

Location: P:\15000s\15039\Mapping\Variation 2\Figures\15039_S2_F2-2_SurveyFlora_130712.mxd

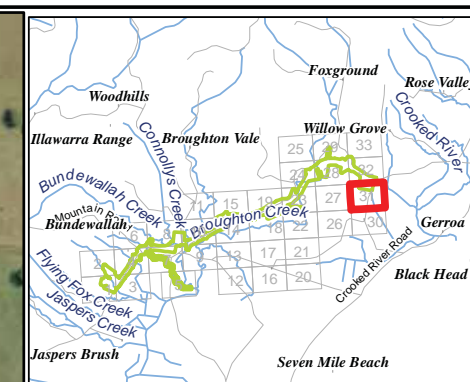
Acknowledgements:
Aerial imagery provided by ARUP
This product incorporates Data which is
copyright to the Commonwealth of Australia (c.2003)



Scale: 1:4,000 at A3
Map Projection: Transverse Mercator
Horizontal Datum: Geocentric Datum of Australia 1994
Grid: Map Grid of Australia, Zone 56



Figure 2.2



Legend

(No. Refers to Quadrats listed in Appendix A)

- (Summer 2007 - Habitat condition assessment
-) Summer 2007 - Quadrat
-) Spring 2008 - Quadrat
- (Autumn 2009 - Habitat condition assessment
-) Autumn 2009 - Quadrat
- Summer 2007 - Random meander transect
- Spring 2008 - Random meander transect
- Autumn 2009 - Random meander transect
- Spring 2011 - Town Creek Random meander transect
- Subject Site - Temporary Creek Crossings
- Subject Site - Footprint

Ancillary Sites

- Subject Site - Compound
- ▨ Subject Site - Stockpile
- Study Area



Biosis Research Pty. Ltd.
18-20 Mandible Street
Alexandria
NEW SOUTH WALES
2015

Figure 2.2.31: Location of flora survey effort

Date: 1 August 2012

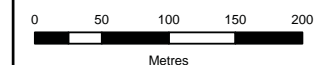
Drawn by: RS/JMS/ANP

File: 13194

Checked by: JC

Location: P:\15000s\15039\Mapping\Variation 2\Variation 2 figures\15039_S2_F2-2_SurveyFlora_130712.mxd

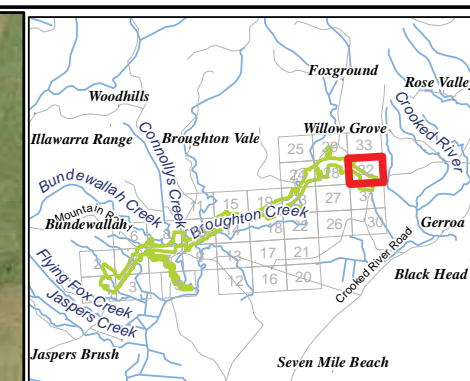
Acknowledgements:
Aerial imagery provided by ARUP
This product incorporates Data which is
copyright to the Commonwealth of Australia (c.2003)



Scale: 1:4,000 at A3
Map Projection: Transverse Mercator
Horizontal Datum: Geocentric Datum of Australia 1994
Grid: Map Grid of Australia, Zone 56



Figure 2.2



Legend

(No. Refers to Quadrats listed in Appendix A)

- (Summer 2007 - Habitat condition assessment
-) Summer 2007 - Quadrat
-) Spring 2008 - Quadrat
- (Autumn 2009 - Habitat condition assessment
-) Autumn 2009 - Quadrat
- Summer 2007 - Random meander transect
- Spring 2008 - Random meander transect
- Autumn 2009 - Random meander transect
- Spring 2011 - Town Creek Random meander transect
- Subject Site - Temporary Creek Crossings
- Subject Site - Footprint

Ancillary Sites

- Subject Site - Compound
- ▨ Subject Site - Stockpile
- Study Area



Biosis Research Pty. Ltd.
18-20 Mandible Street
Alexandria
NEW SOUTH WALES
2015

Figure 2.2.32: Location of flora survey effort

Date: 1 August 2012

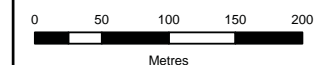
Drawn by: RS/JMS/ANP

File: 13194

Checked by: JC

Location: P:\15000s\15039\Mapping\Variation 2\Variation 2 figures\15039_S2_F2-2_SurveyFlora_130712.mxd

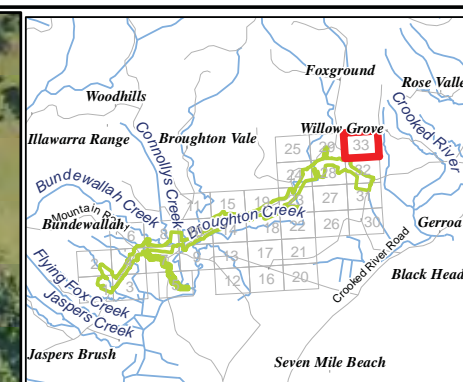
Acknowledgements:
Aerial imagery provided by ARUP
This product incorporates Data which is
copyright to the Commonwealth of Australia (c.2003)



Scale: 1:4,000 at A3
Map Projection: Transverse Mercator
Horizontal Datum: Geocentric Datum of Australia 1994
Grid: Map Grid of Australia, Zone 56

Ü

Figure 2.2



Legend

(No. Refers to Quadrats listed in Appendix A)

- (Summer 2007 - Habitat condition assessment
-) Summer 2007 - Quadrat
-) Spring 2008 - Quadrat
- (Autumn 2009 - Habitat condition assessment
-) Autumn 2009 - Quadrat
- Summer 2007 - Random meander transect
- Spring 2008 - Random meander transect
- Autumn 2009 - Random meander transect
- Spring 2011 - Town Creek Random meander transect

Subject Site - Temporary Creek Crossings

Subject Site - Footprint

Ancillary Sites

Subject Site - Compound

Subject Site - Stockpile

Study Area



Biosis Research Pty. Ltd.
18-20 Mandible Street
Alexandria
NEW SOUTH WALES
2015

Figure 2.2.33: Location of flora survey effort

Date: 1 August 2012

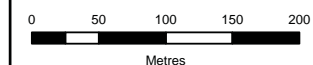
Drawn by: RS/JMS/ANP

File: 13194

Checked by: JC

Location: P:\15000s\15039\Mapping\Variation 2\Figures\15039_S2_F2-2_SurveyFlora_130712.mxd

Acknowledgements:
Aerial imagery provided by ARUP
This product incorporates Data which is
copyright to the Commonwealth of Australia (c.2003)



Scale: 1:4,000 at A3
Map Projection: Transverse Mercator
Horizontal Datum: Geocentric Datum of Australia 1994
Grid: Map Grid of Australia, Zone 56



Figure 2.2