

Legend

Survey points

- Summer 2007, Anabat
- Summer 2007, Anabat/Harp Trap
- Summer 2007, Anabat/Owl Call Playback
- Summer 2007, Bird Survey
- Summer 2007, Habitat Assessment
- Summer 2007, Harp Trap
- Summer 2007, Owl Call Playback
- Summer 2007, Spotlighting
- Spring 2008, Anabat
- Spring 2008, Bird Survey
- Spring 2008, Frog Spotlight
- Spring 2008, Habitat Assessment
- Spring 2008, Owl Call Playback
- Autumn 2009, Bird Survey
- Autumn 2009, Call Playback
- Autumn 2009, Frog Spotlight
- Autumn 2009, Habitat Assessment
- Autumn 2009, Spotlighting

Survey transects

- Summer 2007 - Bird Survey
- Summer 2007 - Elliot Trap
- Summer 2007 - Cage Trap
- Summer 2007 - Elliot Trap/Cage Trap/Bird Survey
- Summer 2007 - Elliot Trap/Cage Trap/Bird Survey/Spotlighting
- Summer 2007 - Spotlighting
- Summer 2007 - Spotlighting/Nocturnal Bird Survey
- Spring 2008 - Bird survey
- Spring 2008 - Elliot Trap/Cage Trap
- Spring 2008 - Elliot Trap/Cage Trap/Hair Tube
- Spring 2008 - Spotlighting
- Spring 2008 - Spotlighting/Nocturnal Bird Survey
- Autumn 2009 - Bird survey
- Autumn 2009 - Cage Trap
- Autumn 2009 - Spotlighting
- Spring 2011 - Town Creek general survey and habitat assessments

Subject Site - Temporary Creek Crossings

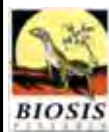
Subject Site - Footprint

Ancillary Sites

- Subject Site - Compound
- Subject Site - Stockpile

Study Area

RoadNameExtent



Biosis Research Pty. Ltd.
18-20 Mandible Street
Alexandria
NEW SOUTH WALES
2015

Figure 2.3.1: Location of fauna survey effort

Date: 1 August 2012

Drawn by: RS/JMS/ANP

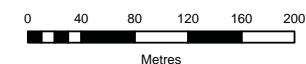
File: 13194

Checked by: JC

Location: P:\15000s\15039\Mapping\Variation 2\Variation 2 figures\15039_S2_F2-3_survey_fauna_010812.mxd

Acknowledgements:

Aerial imagery provided by ARUP
This product incorporates Data which is
copyright to the Commonwealth of Australia (c.2003)



Scale: 1: 4,000 at A3

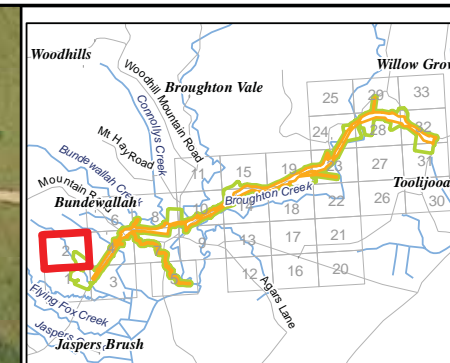
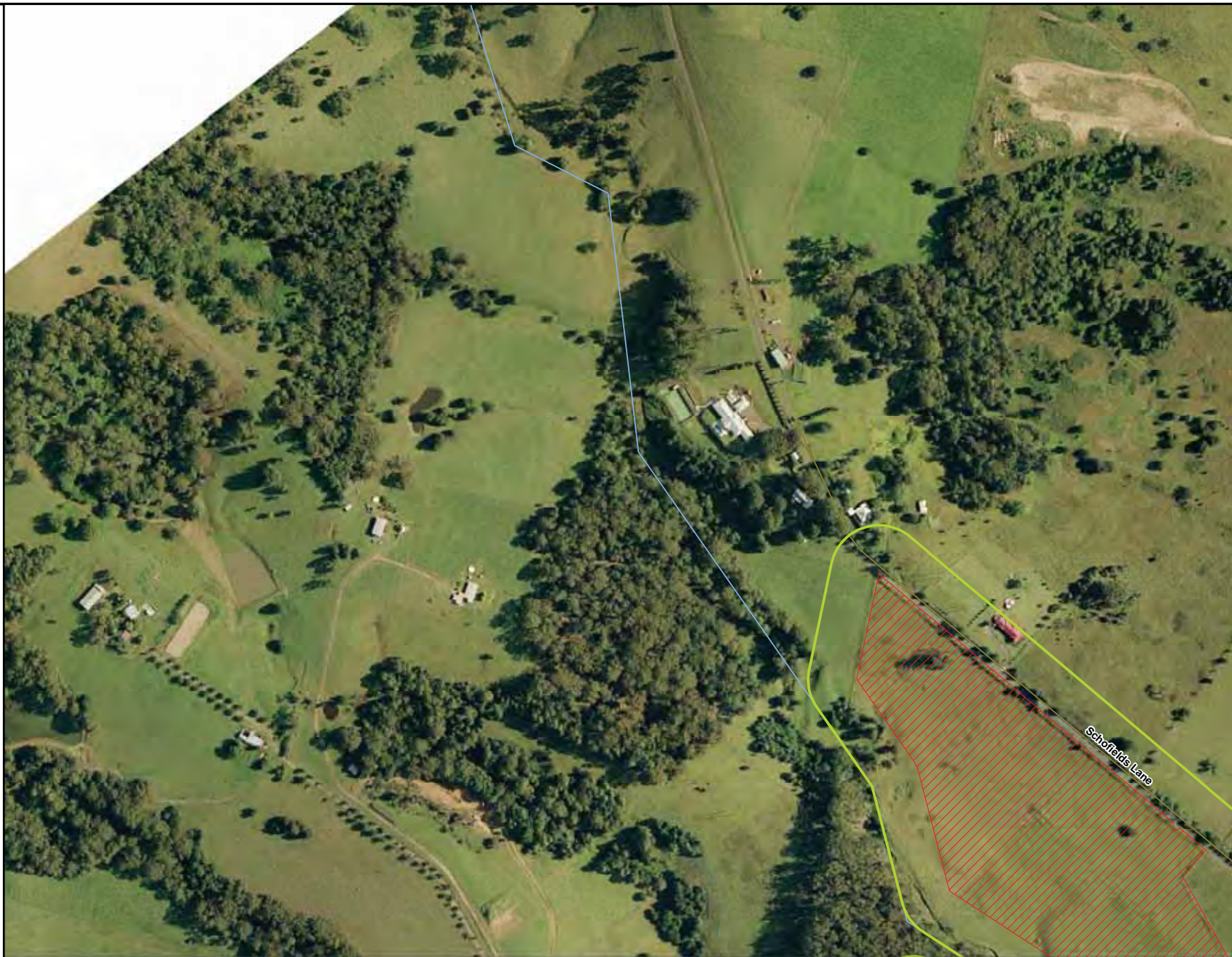
Map Projection: Transverse Mercator

Horizontal Datum: Geocentric Datum of Australia 1994

Grid: Map Grid of Australia, Zone 56

Ü

Figure 2.3



Legend

Survey points

- Summer 2007, Anabat
- Summer 2007, Anabat/Harp Trap
- Summer 2007, Anabat/Owl Call Playback
- Summer 2007, Bird Survey
- Summer 2007, Habitat Assessment
- Summer 2007, Harp Trap
- Summer 2007, Owl Call Playback
- Summer 2007, Spotlighting
- Spring 2008, Anabat
- Spring 2008, Bird Survey
- Spring 2008, Frog Spotlight
- Spring 2008, Habitat Assessment
- Spring 2008, Owl Call Playback
- Autumn 2009, Bird Survey
- Autumn 2009, Call Playback
- Autumn 2009, Frog Spotlight
- Autumn 2009, Habitat Assessment
- Autumn 2009, Spotlighting

Survey transects

- Summer 2007 - Bird Survey
- Summer 2007 - Elliot Trap
- Summer 2007 - Cage Trap
- Summer 2007 - Elliot Trap/Cage Trap/Bird Survey
- Summer 2007 - Elliot Trap/Cage Trap/Bird Survey/Spotlighting
- Summer 2007 - Spotlighting
- Summer 2007 - Spotlighting/Nocturnal Bird Survey
- Spring 2008 - Bird survey
- Spring 2008 - Elliot Trap/Cage Trap
- Spring 2008 - Elliot Trap/Cage Trap/Hair Tube
- Spring 2008 - Spotlighting
- Spring 2008 - Spotlighting/Nocturnal Bird Survey
- Autumn 2009 - Bird survey
- Autumn 2009 - Cage Trap
- Autumn 2009 - Spotlighting
- Spring 2011 - Town Creek general survey and habitat assessments

Subject Site - Temporary Creek Crossings

Subject Site - Footprint

Ancillary Sites

- Subject Site - Compound
- Subject Site - Stockpile
- Study Area
- RoadNameExtent



Biosis Research Pty. Ltd.
18-20 Mandible Street
Alexandria
NEW SOUTH WALES
2015

Figure 2.3.2: Location of fauna survey effort

Date: 1 August 2012

Drawn by: RS/JMS/ANP

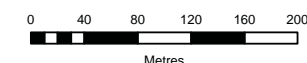
File: 13194

Checked by: JC

Location: P:\15000s\15039\Mapping\Variation 2\Variation 2 figures\15039_S2_F2-3_survey_fauna_010812.mxd

Acknowledgements:

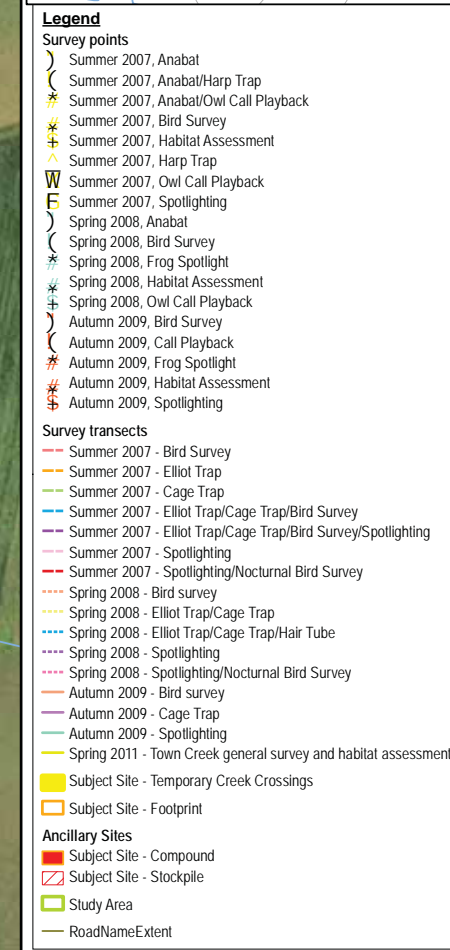
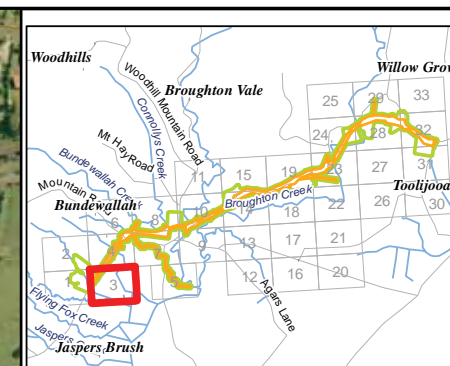
Aerial imagery provided by ARUP
This product incorporates Data which is
copyright to the Commonwealth of Australia (c.2003)



Scale: 1: 4,000 at A3
Map Projection: Transverse Mercator
Horizontal Datum: Geocentric Datum of Australia 1994
Grid: Map Grid of Australia, Zone 56



Figure 2.3



Biosis Research Pty. Ltd.
18-20 Mandible Street
Alexandria
NEW SOUTH WALES
2015

Figure 2.3.3: Location of fauna survey effort

Date: 1 August 2012

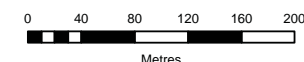
Drawn by: RS/JMS/ANP

File: 13194

Checked by: JC

Location: P:\15000s\15039\Mapping\Variation 2\Variation 2 figures\15039_S2_F2-3_survey_fauna_010812.mxd

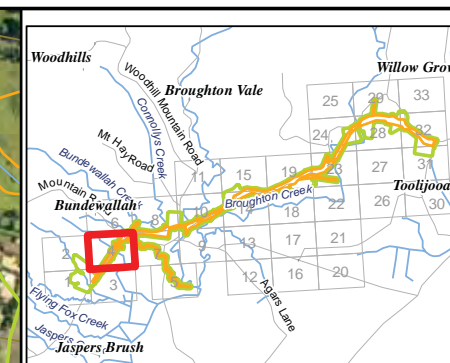
Acknowledgements:
Aerial imagery provided by ARUP
This product incorporates Data which is
copyright to the Commonwealth of Australia (c.2003)



Scale: 1: 4,000 at A3
Map Projection: Transverse Mercator
Horizontal Datum: Geocentric Datum of Australia 1994
Grid: Map Grid of Australia, Zone 56



Figure 2.3



- Legend**
- Survey points**
- Summer 2007, Anabat
 - Summer 2007, Anabat/Harp Trap
 - Summer 2007, Anabat/Owl Call Playback
 - Summer 2007, Bird Survey
 - Summer 2007, Habitat Assessment
 - Summer 2007, Harp Trap
 - Summer 2007, Owl Call Playback
 - Summer 2007, Spotlighting
 - Spring 2008, Anabat
 - Spring 2008, Bird Survey
 - Spring 2008, Frog Spotlight
 - Spring 2008, Habitat Assessment
 - Spring 2008, Owl Call Playback
 - Autumn 2009, Bird Survey
 - Autumn 2009, Call Playback
 - Autumn 2009, Frog Spotlight
 - Autumn 2009, Habitat Assessment
 - Autumn 2009, Spotlighting
- Survey transects**
- Summer 2007 - Bird Survey
 - Summer 2007 - Elliot Trap
 - Summer 2007 - Cage Trap
 - Summer 2007 - Elliot Trap/Cage Trap/Bird Survey
 - Summer 2007 - Elliot Trap/Cage Trap/Bird Survey/Spotlighting
 - Summer 2007 - Spotlighting
 - Summer 2007 - Spotlighting/Nocturnal Bird Survey
 - Spring 2008 - Bird survey
 - Spring 2008 - Elliot Trap/Cage Trap
 - Spring 2008 - Elliot Trap/Cage Trap/Hair Tube
 - Spring 2008 - Spotlighting
 - Spring 2008 - Spotlighting/Nocturnal Bird Survey
 - Autumn 2009 - Bird survey
 - Autumn 2009 - Cage Trap
 - Autumn 2009 - Spotlighting
 - Spring 2011 - Town Creek general survey and habitat assessments
- Subject Site - Temporary Creek Crossings**
- Subject Site - Footprint**
- Ancillary Sites**
- Subject Site - Compound
 - Subject Site - Stockpile
 - Study Area
 - RoadNameExtent



Biosis Research Pty. Ltd.
18-20 Mandible Street
Alexandria
NEW SOUTH WALES
2015

Figure 2.3.4: Location of fauna survey effort

Date: 1 August 2012

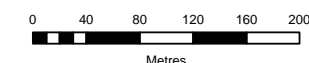
Drawn by: RS/JMS/ANP

File: 13194

Checked by: JC

Location: P:\15000s\15039\Mapping\Variation 2\Variation 2 figures\15039_S2_F2-3_survey_fauna_010812.mxd

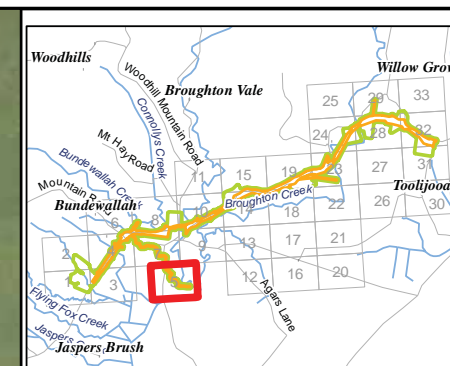
Acknowledgements:
Aerial imagery provided by ARUP
This product incorporates Data which is
copyright to the Commonwealth of Australia (c.2003)



Scale: 1: 4,000 at A3
Map Projection: Transverse Mercator
Horizontal Datum: Geocentric Datum of Australia 1994
Grid: Map Grid of Australia, Zone 56



Figure 2.3



Legend

Survey points

- Summer 2007, Anabat
- Summer 2007, Anabat/Harp Trap
- Summer 2007, Anabat/Owl Call Playback
- Summer 2007, Bird Survey
- Summer 2007, Habitat Assessment
- Summer 2007, Harp Trap
- Summer 2007, Owl Call Playback
- Summer 2007, Spotlighting
- Spring 2008, Anabat
- Spring 2008, Bird Survey
- Spring 2008, Frog Spotlight
- Spring 2008, Habitat Assessment
- Spring 2008, Owl Call Playback
- Autumn 2009, Bird Survey
- Autumn 2009, Call Playback
- Autumn 2009, Frog Spotlight
- Autumn 2009, Habitat Assessment
- Autumn 2009, Spotlighting

Survey transects

- Summer 2007 - Bird Survey
- Summer 2007 - Elliot Trap
- Summer 2007 - Cage Trap
- Summer 2007 - Elliot Trap/Cage Trap/Bird Survey
- Summer 2007 - Elliot Trap/Cage Trap/Bird Survey/Spotlighting
- Summer 2007 - Spotlighting
- Summer 2007 - Spotlighting/Nocturnal Bird Survey
- Spring 2008 - Bird survey
- Spring 2008 - Elliot Trap/Cage Trap
- Spring 2008 - Elliot Trap/Cage Trap/Hair Tube
- Spring 2008 - Spotlighting
- Spring 2008 - Spotlighting/Nocturnal Bird Survey
- Autumn 2009 - Bird survey
- Autumn 2009 - Cage Trap
- Autumn 2009 - Spotlighting
- Spring 2011 - Town Creek general survey and habitat assessments

Subject Site - Temporary Creek Crossings

Subject Site - Footprint

Ancillary Sites

- Subject Site - Compound
- Subject Site - Stockpile
- Study Area
- RoadNameExtent

Figure 2.3.5: Location of fauna survey effort

Date: 1 August 2012

Drawn by: RS/JMS/ANP

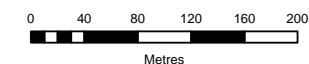
File: 13194

Checked by: JC

Location: P:\15000s\15039\Mapping\Variation 2\Variation 2 figures\15039_S2_F2-3_survey_fauna_010812.mxd

Acknowledgements:

Aerial imagery provided by ARUP
This product incorporates Data which is
copyright to the Commonwealth of Australia (c.2003)



Scale: 1: 4,000 at A3

Map Projection: Transverse Mercator

Horizontal Datum: Geocentric Datum of Australia 1994

Grid: Map Grid of Australia, Zone 56

Ü

Figure 2.3



Biosis Research Pty. Ltd.
18-20 Mandible Street
Alexandria
NEW SOUTH WALES
2015



Figure 2.3.6: Location of fauna survey effort

Date: 1 August 2012

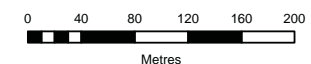
Drawn by: RS/JMS/ANP

File: 13194

Checked by: JC

Location: P:\15000s\15039\Mapping\Variation 2\Variation 2 figures\15039_S2_F2-3_survey_fauna_010812.mxd

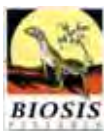
Acknowledgements:
Aerial imagery provided by ARUP
This product incorporates Data which is
copyright to the Commonwealth of Australia (c.2003)



Scale: 1: 4,000 at A3
Map Projection: Transverse Mercator
Horizontal Datum: Geocentric Datum of Australia 1994
Grid: Map Grid of Australia, Zone 56

Ü

Figure 2.3



Biosis Research Pty. Ltd.
18-20 Mandible Street
Alexandria
NEW SOUTH WALES
2015



Figure 2.3.7: Location of fauna survey effort



Biosis Research Pty. Ltd.
18-20 Mandible Street
Alexandria
NEW SOUTH WALES
2015

Date: 1 August 2012

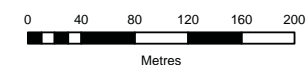
Drawn by: RS/JMS/ANP

File: 13194

Checked by: JC

Location: P:\15000s\15039\Mapping\Variation 2\Variation 2 figures\15039_S2_F2-3_survey_fauna_010812.mxd

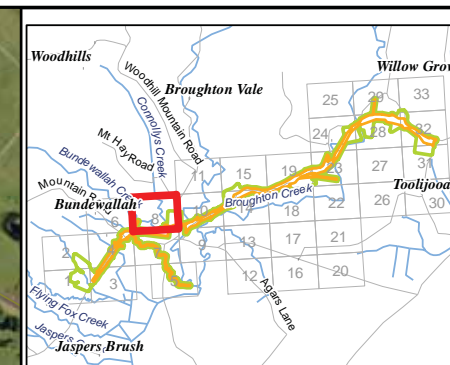
Acknowledgements:
Aerial imagery provided by ARUP
This product incorporates Data which is
copyright to the Commonwealth of Australia (c.2003)



Scale: 1: 4,000 at A3
Map Projection: Transverse Mercator
Horizontal Datum: Geocentric Datum of Australia 1994
Grid: Map Grid of Australia, Zone 56



Figure 2.3



Legend

Survey points

- Summer 2007, Anabat
- Summer 2007, Anabat/Harp Trap
- Summer 2007, Anabat/Owl Call Playback
- Summer 2007, Bird Survey
- Summer 2007, Habitat Assessment
- Summer 2007, Harp Trap
- Summer 2007, Owl Call Playback
- Summer 2007, Spotlighting
- Spring 2008, Anabat
- Spring 2008, Bird Survey
- Spring 2008, Frog Spotlight
- Spring 2008, Habitat Assessment
- Spring 2008, Owl Call Playback
- Autumn 2009, Bird Survey
- Autumn 2009, Call Playback
- Autumn 2009, Frog Spotlight
- Autumn 2009, Habitat Assessment
- Autumn 2009, Spotlighting

Survey transects

- Summer 2007 - Bird Survey
- Summer 2007 - Elliot Trap
- Summer 2007 - Cage Trap
- Summer 2007 - Elliot Trap/Cage Trap/Bird Survey
- Summer 2007 - Elliot Trap/Cage Trap/Bird Survey/Spotlighting
- Summer 2007 - Spotlighting
- Summer 2007 - Spotlighting/Nocturnal Bird Survey
- Spring 2008 - Bird survey
- Spring 2008 - Elliot Trap/Cage Trap
- Spring 2008 - Elliot Trap/Cage Trap/Hair Tube
- Spring 2008 - Spotlighting
- Spring 2008 - Spotlighting/Nocturnal Bird Survey
- Autumn 2009 - Bird survey
- Autumn 2009 - Cage Trap
- Autumn 2009 - Spotlighting
- Spring 2011 - Town Creek general survey and habitat assessments

Subject Site - Temporary Creek Crossings

Subject Site - Footprint

Ancillary Sites

- Subject Site - Compound
- Subject Site - Stockpile
- Study Area
- RoadNameExtent

Figure 2.3.8: Location of fauna survey effort

Date: 1 August 2012

Drawn by: RS/JMS/ANP

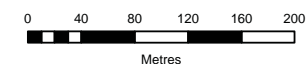
File: 13194

Checked by: JC

Location: P:\15000s\15039\Mapping\Variation 2\Variation 2 figures\15039_S2_F2-3_survey_fauna_010812.mxd

Acknowledgements:

Aerial imagery provided by ARUP
This product incorporates Data which is
copyright to the Commonwealth of Australia (c.2003)



Scale: 1: 4,000 at A3

Map Projection: Transverse Mercator

Horizontal Datum: Geocentric Datum of Australia 1994

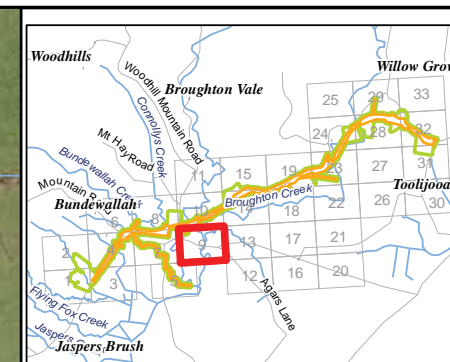
Grid: Map Grid of Australia, Zone 56

Ü

Figure 2.3



Biosis Research Pty. Ltd.
18-20 Mandible Street
Alexandria
NEW SOUTH WALES
2015



- Legend**
- Survey points**
- Summer 2007, Anabat
 - Summer 2007, Anabat/Harp Trap
 - Summer 2007, Anabat/Owl Call Playback
 - Summer 2007, Bird Survey
 - Summer 2007, Habitat Assessment
 - Summer 2007, Harp Trap
 - Summer 2007, Owl Call Playback
 - Summer 2007, Spotlighting
 - Spring 2008, Anabat
 - Spring 2008, Bird Survey
 - Spring 2008, Frog Spotlight
 - Spring 2008, Habitat Assessment
 - Spring 2008, Owl Call Playback
 - Autumn 2009, Bird Survey
 - Autumn 2009, Call Playback
 - Autumn 2009, Frog Spotlight
 - Autumn 2009, Habitat Assessment
 - Autumn 2009, Spotlighting
- Survey transects**
- Summer 2007 - Bird Survey
 - Summer 2007 - Elliot Trap
 - Summer 2007 - Cage Trap
 - Summer 2007 - Elliot Trap/Cage Trap/Bird Survey
 - Summer 2007 - Elliot Trap/Cage Trap/Bird Survey/Spotlighting
 - Summer 2007 - Spotlighting
 - Summer 2007 - Spotlighting/Nocturnal Bird Survey
 - Spring 2008 - Bird survey
 - Spring 2008 - Elliot Trap/Cage Trap
 - Spring 2008 - Elliot Trap/Cage Trap/Hair Tube
 - Spring 2008 - Spotlighting
 - Spring 2008 - Spotlighting/Nocturnal Bird Survey
 - Autumn 2009 - Bird survey
 - Autumn 2009 - Cage Trap
 - Autumn 2009 - Spotlighting
 - Spring 2011 - Town Creek general survey and habitat assessments
- Subject Site - Temporary Creek Crossings**
- Subject Site - Footprint**
- Ancillary Sites**
- Subject Site - Compound
 - Subject Site - Stockpile
 - Study Area
 - RoadNameExtent



Biosis Research Pty. Ltd.
18-20 Mandible Street
Alexandria
NEW SOUTH WALES
2015

Figure 2.3.9: Location of fauna survey effort

Date: 1 August 2012

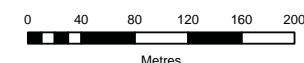
Drawn by: RS/JMS/ANP

File: 13194

Checked by: JC

Location: P:\15000s\15039\Mapping\Variation 2\Variation 2 figures\15039_S2_F2-3_survey_fauna_010812.mxd

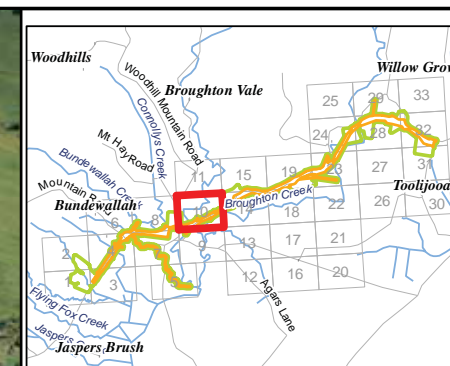
Acknowledgements:
Aerial imagery provided by ARUP
This product incorporates Data which is
copyright to the Commonwealth of Australia (c.2003)



Scale: 1: 4,000 at A3
Map Projection: Transverse Mercator
Horizontal Datum: Geocentric Datum of Australia 1994
Grid: Map Grid of Australia, Zone 56



Figure 2.3



- Legend**
- Survey points**
- Summer 2007, Anabat
 - Summer 2007, Anabat/Harp Trap
 - Summer 2007, Anabat/Owl Call Playback
 - Summer 2007, Bird Survey
 - Summer 2007, Habitat Assessment
 - Summer 2007, Harp Trap
 - Summer 2007, Owl Call Playback
 - Summer 2007, Spotlighting
 - Spring 2008, Anabat
 - Spring 2008, Bird Survey
 - Spring 2008, Frog Spotlight
 - Spring 2008, Habitat Assessment
 - Spring 2008, Owl Call Playback
 - Autumn 2009, Bird Survey
 - Autumn 2009, Call Playback
 - Autumn 2009, Frog Spotlight
 - Autumn 2009, Habitat Assessment
 - Autumn 2009, Spotlighting
- Survey transects**
- Summer 2007 - Bird Survey
 - Summer 2007 - Elliot Trap
 - Summer 2007 - Cage Trap
 - Summer 2007 - Elliot Trap/Cage Trap/Bird Survey
 - Summer 2007 - Elliot Trap/Cage Trap/Bird Survey/Spotlighting
 - Summer 2007 - Spotlighting
 - Summer 2007 - Spotlighting/Nocturnal Bird Survey
 - Spring 2008 - Bird survey
 - Spring 2008 - Elliot Trap/Cage Trap
 - Spring 2008 - Elliot Trap/Cage Trap/Hair Tube
 - Spring 2008 - Spotlighting
 - Spring 2008 - Spotlighting/Nocturnal Bird Survey
 - Autumn 2009 - Bird survey
 - Autumn 2009 - Cage Trap
 - Autumn 2009 - Spotlighting
 - Spring 2011 - Town Creek general survey and habitat assessments
- Subject Site - Temporary Creek Crossings**
- Subject Site - Footprint**
- Ancillary Sites**
- Subject Site - Compound
 - Subject Site - Stockpile
 - Study Area
 - RoadNameExtent



Biosis Research Pty. Ltd.
18-20 Mandible Street
Alexandria
NEW SOUTH WALES
2015

Figure 2.3.10: Location of fauna survey effort

Date: 1 August 2012

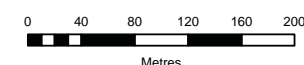
Drawn by: RS/JMS/ANP

File: 13194

Checked by: JC

Location: P:\15000s\15039\Mapping\Variation 2\Variation 2 figures\15039_S2_F2-3_survey_fauna_010812.mxd

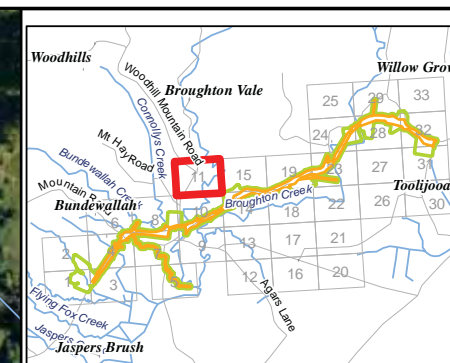
Acknowledgements:
Aerial imagery provided by ARUP
This product incorporates Data which is
copyright to the Commonwealth of Australia (c.2003)



Scale: 1: 4,000 at A3
Map Projection: Transverse Mercator
Horizontal Datum: Geocentric Datum of Australia 1994
Grid: Map Grid of Australia, Zone 56

Ü

Figure 2.3



- Legend**
- Survey points**
- Summer 2007, Anabat
 - Summer 2007, Anabat/Harp Trap
 - Summer 2007, Anabat/Owl Call Playback
 - Summer 2007, Bird Survey
 - Summer 2007, Habitat Assessment
 - Summer 2007, Harp Trap
 - Summer 2007, Owl Call Playback
 - Summer 2007, Spotlighting
 - Spring 2008, Anabat
 - Spring 2008, Bird Survey
 - Spring 2008, Frog Spotlight
 - Spring 2008, Habitat Assessment
 - Spring 2008, Owl Call Playback
 - Autumn 2009, Bird Survey
 - Autumn 2009, Call Playback
 - Autumn 2009, Frog Spotlight
 - Autumn 2009, Habitat Assessment
 - Autumn 2009, Spotlighting
- Survey transects**
- Summer 2007 - Bird Survey
 - Summer 2007 - Elliot Trap
 - Summer 2007 - Cage Trap
 - Summer 2007 - Elliot Trap/Cage Trap/Bird Survey
 - Summer 2007 - Elliot Trap/Cage Trap/Bird Survey/Spotlighting
 - Summer 2007 - Spotlighting
 - Summer 2007 - Spotlighting/Nocturnal Bird Survey
 - Spring 2008 - Bird survey
 - Spring 2008 - Elliot Trap/Cage Trap
 - Spring 2008 - Elliot Trap/Cage Trap/Hair Tube
 - Spring 2008 - Spotlighting
 - Spring 2008 - Spotlighting/Nocturnal Bird Survey
 - Autumn 2009 - Bird survey
 - Autumn 2009 - Cage Trap
 - Autumn 2009 - Spotlighting
 - Spring 2011 - Town Creek general survey and habitat assessments
- Subject Site - Temporary Creek Crossings**
- Subject Site - Footprint**
- Ancillary Sites**
- Subject Site - Compound
 - Subject Site - Stockpile
 - Study Area
 - RoadNameExtent



Biosis Research Pty. Ltd.
18-20 Mandible Street
Alexandria
NEW SOUTH WALES
2015

Figure 2.3.11: Location of fauna survey effort

Date: 1 August 2012

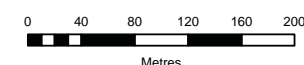
Drawn by: RS/JMS/ANP

File: 13194

Checked by: JC

Location: P:\15000s\15039\Mapping\Variation 2\Variation 2 figures\15039_S2_F2-3_survey_fauna_010812.mxd

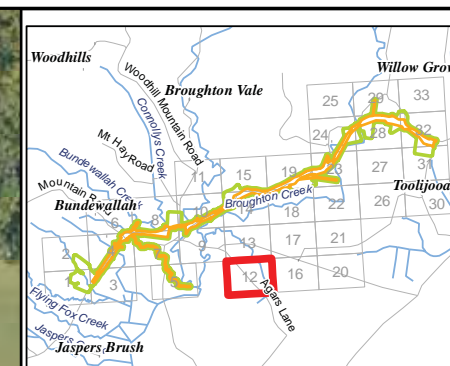
Acknowledgements:
Aerial imagery provided by ARUP
This product incorporates Data which is
copyright to the Commonwealth of Australia (c.2003)



Scale: 1: 4,000 at A3
Map Projection: Transverse Mercator
Horizontal Datum: Geocentric Datum of Australia 1994
Grid: Map Grid of Australia, Zone 56



Figure 2.3



- Legend**
- Survey points**
- Summer 2007, Anabat
 - Summer 2007, Anabat/Harp Trap
 - Summer 2007, Anabat/Owl Call Playback
 - Summer 2007, Bird Survey
 - Summer 2007, Habitat Assessment
 - Summer 2007, Harp Trap
 - Summer 2007, Owl Call Playback
 - Summer 2007, Spotlighting
 - Spring 2008, Anabat
 - Spring 2008, Bird Survey
 - Spring 2008, Frog Spotlight
 - Spring 2008, Habitat Assessment
 - Spring 2008, Owl Call Playback
 - Autumn 2009, Bird Survey
 - Autumn 2009, Call Playback
 - Autumn 2009, Frog Spotlight
 - Autumn 2009, Habitat Assessment
 - Autumn 2009, Spotlighting
- Survey transects**
- Summer 2007 - Bird Survey
 - Summer 2007 - Elliot Trap
 - Summer 2007 - Cage Trap
 - Summer 2007 - Elliot Trap/Cage Trap/Bird Survey
 - Summer 2007 - Elliot Trap/Cage Trap/Bird Survey/Spotlighting
 - Summer 2007 - Spotlighting
 - Summer 2007 - Spotlighting/Nocturnal Bird Survey
 - Spring 2008 - Bird survey
 - Spring 2008 - Elliot Trap/Cage Trap
 - Spring 2008 - Elliot Trap/Cage Trap/Hair Tube
 - Spring 2008 - Spotlighting
 - Spring 2008 - Spotlighting/Nocturnal Bird Survey
 - Autumn 2009 - Bird survey
 - Autumn 2009 - Cage Trap
 - Autumn 2009 - Spotlighting
 - Spring 2011 - Town Creek general survey and habitat assessments
- Subject Site - Temporary Creek Crossings**
- Subject Site - Footprint**
- Ancillary Sites**
- Subject Site - Compound
 - Subject Site - Stockpile
 - Study Area
 - RoadNameExtent



Biosis Research Pty. Ltd.
18-20 Mandible Street
Alexandria
NEW SOUTH WALES
2015

Figure 2.3.12: Location of fauna survey effort

Date: 1 August 2012

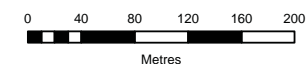
Drawn by: RS/JMS/ANP

File: 13194

Checked by: JC

Location: P:\15000s\15039\Mapping\Variation 2\Variation 2 figures\15039_S2_F2-3_survey_fauna_010812.mxd

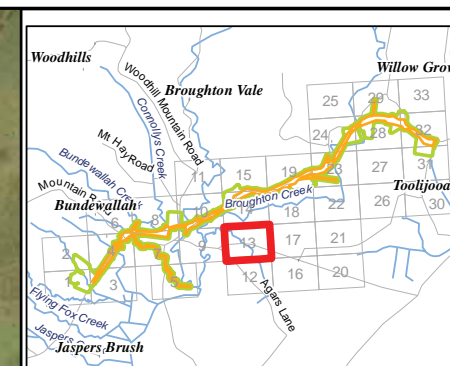
Acknowledgements:
Aerial imagery provided by ARUP
This product incorporates Data which is
copyright to the Commonwealth of Australia (c.2003)



Scale: 1: 4,000 at A3
Map Projection: Transverse Mercator
Horizontal Datum: Geocentric Datum of Australia 1994
Grid: Map Grid of Australia, Zone 56



Figure 2.3



Legend

Survey points

- Summer 2007, Anabat
- Summer 2007, Anabat/Harp Trap
- Summer 2007, Anabat/Owl Call Playback
- Summer 2007, Bird Survey
- Summer 2007, Habitat Assessment
- Summer 2007, Harp Trap
- Summer 2007, Owl Call Playback
- Summer 2007, Spotlighting
- Spring 2008, Anabat
- Spring 2008, Bird Survey
- Spring 2008, Frog Spotlight
- Spring 2008, Habitat Assessment
- Spring 2008, Owl Call Playback
- Autumn 2009, Bird Survey
- Autumn 2009, Call Playback
- Autumn 2009, Frog Spotlight
- Autumn 2009, Habitat Assessment
- Autumn 2009, Spotlighting

Survey transects

- Summer 2007 - Bird Survey
- Summer 2007 - Elliot Trap
- Summer 2007 - Cage Trap
- Summer 2007 - Elliot Trap/Cage Trap/Bird Survey
- Summer 2007 - Elliot Trap/Cage Trap/Bird Survey/Spotlighting
- Summer 2007 - Spotlighting
- Summer 2007 - Spotlighting/Nocturnal Bird Survey
- Spring 2008 - Bird survey
- Spring 2008 - Elliot Trap/Cage Trap
- Spring 2008 - Elliot Trap/Cage Trap/Hair Tube
- Spring 2008 - Spotlighting
- Spring 2008 - Spotlighting/Nocturnal Bird Survey
- Autumn 2009 - Bird survey
- Autumn 2009 - Cage Trap
- Autumn 2009 - Spotlighting
- Spring 2011 - Town Creek general survey and habitat assessments

Subject Site - Temporary Creek Crossings

Subject Site - Footprint

Ancillary Sites

- Subject Site - Compound
- Subject Site - Stockpile
- Study Area
- RoadNameExtent



Biosis Research Pty. Ltd.
18-20 Mandible Street
Alexandria
NEW SOUTH WALES
2015

Figure 2.3.13: Location of fauna survey effort

Date: 1 August 2012

Drawn by: RS/JMS/ANP

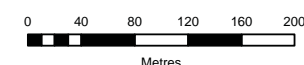
File: 13194

Checked by: JC

Location: P:\15000s\15039\Mapping\Variation 2\Variation 2 figures\15039_S2_F2-3_survey_fauna_010812.mxd

Acknowledgements:

Aerial imagery provided by ARUP
This product incorporates Data which is
copyright to the Commonwealth of Australia (c.2003)



Scale: 1: 4,000 at A3

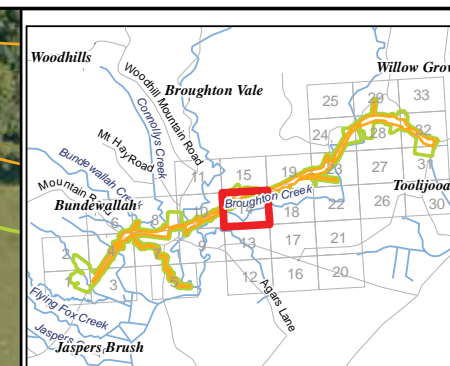
Map Projection: Transverse Mercator

Horizontal Datum: Geocentric Datum of Australia 1994

Grid: Map Grid of Australia, Zone 56



Figure 2.3



- Legend**
- Survey points**
- Summer 2007, Anabat
 - Summer 2007, Anabat/Harp Trap
 - Summer 2007, Anabat/Owl Call Playback
 - Summer 2007, Bird Survey
 - Summer 2007, Habitat Assessment
 - Summer 2007, Harp Trap
 - Summer 2007, Owl Call Playback
 - Summer 2007, Spotlighting
 - Spring 2008, Anabat
 - Spring 2008, Bird Survey
 - Spring 2008, Frog Spotlight
 - Spring 2008, Habitat Assessment
 - Spring 2008, Owl Call Playback
 - Autumn 2009, Bird Survey
 - Autumn 2009, Call Playback
 - Autumn 2009, Frog Spotlight
 - Autumn 2009, Habitat Assessment
 - Autumn 2009, Spotlighting
- Survey transects**
- Summer 2007 - Bird Survey
 - Summer 2007 - Elliot Trap
 - Summer 2007 - Cage Trap
 - Summer 2007 - Elliot Trap/Cage Trap/Bird Survey
 - Summer 2007 - Elliot Trap/Cage Trap/Bird Survey/Spotlighting
 - Summer 2007 - Spotlighting
 - Summer 2007 - Spotlighting/Nocturnal Bird Survey
 - Spring 2008 - Bird survey
 - Spring 2008 - Elliot Trap/Cage Trap
 - Spring 2008 - Elliot Trap/Cage Trap/Hair Tube
 - Spring 2008 - Spotlighting
 - Spring 2008 - Spotlighting/Nocturnal Bird Survey
 - Autumn 2009 - Bird survey
 - Autumn 2009 - Cage Trap
 - Autumn 2009 - Spotlighting
 - Spring 2011 - Town Creek general survey and habitat assessments
- Subject Site**
- Subject Site - Temporary Creek Crossings
 - Subject Site - Footprint
- Ancillary Sites**
- Subject Site - Compound
 - Subject Site - Stockpile
 - Study Area
 - RoadNameExtent



Biosis Research Pty. Ltd.
18-20 Mandible Street
Alexandria
NEW SOUTH WALES
2015

Figure 2.3.14: Location of fauna survey effort

Date: 1 August 2012

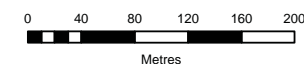
Drawn by: RS/JMS/ANP

File: 13194

Checked by: JC

Location: P:\15000s\15039\Mapping\Variation 2\Variation 2 figures\15039_S2_F2-3_survey_fauna_010812.mxd

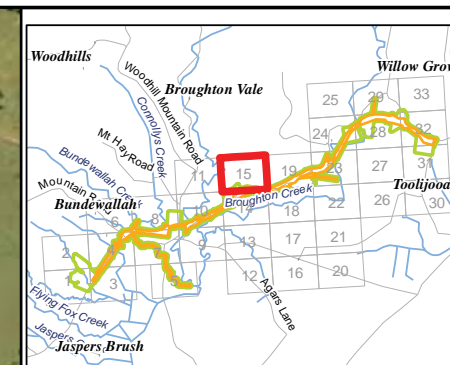
Acknowledgements:
Aerial imagery provided by ARUP
This product incorporates Data which is
copyright to the Commonwealth of Australia (c.2003)



Scale: 1: 4,000 at A3
Map Projection: Transverse Mercator
Horizontal Datum: Geocentric Datum of Australia 1994
Grid: Map Grid of Australia, Zone 56



Figure 2.3



Legend

Survey points

- Summer 2007, Anabat
- Summer 2007, Anabat/Harp Trap
- Summer 2007, Anabat/Owl Call Playback
- Summer 2007, Bird Survey
- Summer 2007, Habitat Assessment
- Summer 2007, Harp Trap
- Summer 2007, Owl Call Playback
- Summer 2007, Spotlighting
- Spring 2008, Anabat
- Spring 2008, Bird Survey
- Spring 2008, Frog Spotlight
- Spring 2008, Habitat Assessment
- Spring 2008, Owl Call Playback
- Autumn 2009, Bird Survey
- Autumn 2009, Call Playback
- Autumn 2009, Frog Spotlight
- Autumn 2009, Habitat Assessment
- Autumn 2009, Spotlighting

Survey transects

- Summer 2007 - Bird Survey
- Summer 2007 - Elliot Trap
- Summer 2007 - Cage Trap
- Summer 2007 - Elliot Trap/Cage Trap/Bird Survey
- Summer 2007 - Elliot Trap/Cage Trap/Bird Survey/Spotlighting
- Summer 2007 - Spotlighting
- Summer 2007 - Spotlighting/Nocturnal Bird Survey
- Spring 2008 - Bird survey
- Spring 2008 - Elliot Trap/Cage Trap
- Spring 2008 - Elliot Trap/Cage Trap/Hair Tube
- Spring 2008 - Spotlighting
- Spring 2008 - Spotlighting/Nocturnal Bird Survey
- Autumn 2009 - Bird survey
- Autumn 2009 - Cage Trap
- Autumn 2009 - Spotlighting
- Spring 2011 - Town Creek general survey and habitat assessments

Subject Site - Temporary Creek Crossings

Subject Site - Footprint

Ancillary Sites

- Subject Site - Compound
- Subject Site - Stockpile
- Study Area
- RoadNameExtent



Biosis Research Pty. Ltd.
18-20 Mandible Street
Alexandria
NEW SOUTH WALES
2015

Figure 2.3.15: Location of fauna survey effort

Date: 1 August 2012

Drawn by: RS/JMS/ANP

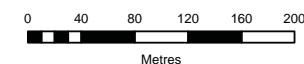
File: 13194

Checked by: JC

Location: P:\15000s\15039\Mapping\Variation 2\Variation 2 figures\15039_S2_F2-3_survey_fauna_010812.mxd

Acknowledgements:

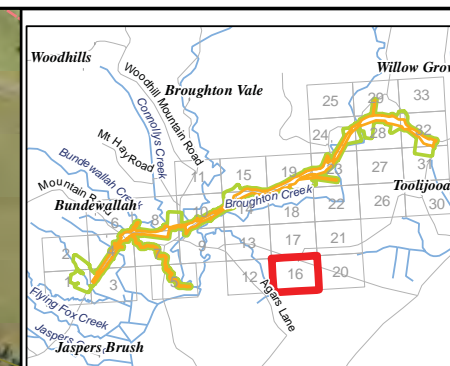
Aerial imagery provided by ARUP
This product incorporates Data which is
copyright to the Commonwealth of Australia (c.2003)



Scale: 1: 4,000 at A3
Map Projection: Transverse Mercator
Horizontal Datum: Geocentric Datum of Australia 1994
Grid: Map Grid of Australia, Zone 56

Ü

Figure 2.3



Legend

Survey points

- Summer 2007, Anabat
- Summer 2007, Anabat/Harp Trap
- Summer 2007, Anabat/Owl Call Playback
- Summer 2007, Bird Survey
- Summer 2007, Habitat Assessment
- Summer 2007, Harp Trap
- Summer 2007, Owl Call Playback
- Summer 2007, Spotlighting
- Spring 2008, Anabat
- Spring 2008, Bird Survey
- Spring 2008, Frog Spotlight
- Spring 2008, Habitat Assessment
- Spring 2008, Owl Call Playback
- Autumn 2009, Bird Survey
- Autumn 2009, Call Playback
- Autumn 2009, Frog Spotlight
- Autumn 2009, Habitat Assessment
- Autumn 2009, Spotlighting

Survey transects

- Summer 2007 - Bird Survey
- Summer 2007 - Elliot Trap
- Summer 2007 - Cage Trap
- Summer 2007 - Elliot Trap/Cage Trap/Bird Survey
- Summer 2007 - Elliot Trap/Cage Trap/Bird Survey/Spotlighting
- Summer 2007 - Spotlighting
- Summer 2007 - Spotlighting/Nocturnal Bird Survey
- Spring 2008 - Bird survey
- Spring 2008 - Elliot Trap/Cage Trap
- Spring 2008 - Elliot Trap/Cage Trap/Hair Tube
- Spring 2008 - Spotlighting
- Spring 2008 - Spotlighting/Nocturnal Bird Survey
- Autumn 2009 - Bird survey
- Autumn 2009 - Cage Trap
- Autumn 2009 - Spotlighting
- Spring 2011 - Town Creek general survey and habitat assessments

Subject Site - Temporary Creek Crossings

Subject Site - Footprint

Ancillary Sites

- Subject Site - Compound
- Subject Site - Stockpile
- Study Area
- RoadNameExtent

Figure 2.3.16: Location of fauna survey effort

Date: 1 August 2012

Drawn by: RS/JMS/ANP

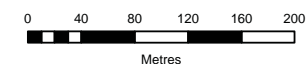
File: 13194

Checked by: JC

Location: P:\15000s\15039\Mapping\Variation 2\Variation 2 figures\15039_S2_F2-3_survey_fauna_010812.mxd

Acknowledgements:

Aerial imagery provided by ARUP
This product incorporates Data which is
copyright to the Commonwealth of Australia (c.2003)



Scale: 1: 4,000 at A3

Map Projection: Transverse Mercator

Horizontal Datum: Geocentric Datum of Australia 1994

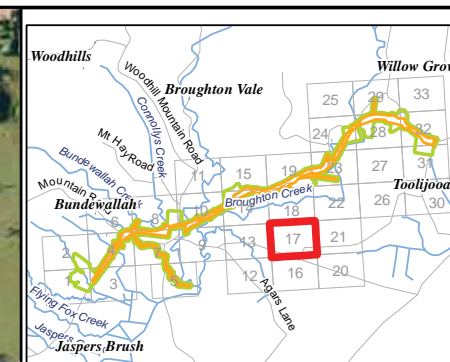
Grid: Map Grid of Australia, Zone 56

Ü

Figure 2.3



Biosis Research Pty. Ltd.
18-20 Mandible Street
Alexandria
NEW SOUTH WALES
2015



- Legend**
- Survey points**
- Summer 2007, Anabat
 - Summer 2007, Anabat/Harp Trap
 - Summer 2007, Anabat/Owl Call Playback
 - Summer 2007, Bird Survey
 - Summer 2007, Habitat Assessment
 - Summer 2007, Harp Trap
 - Summer 2007, Owl Call Playback
 - Summer 2007, Spotlighting
 - Spring 2008, Anabat
 - Spring 2008, Bird Survey
 - Spring 2008, Frog Spotlight
 - Spring 2008, Habitat Assessment
 - Spring 2008, Owl Call Playback
 - Autumn 2009, Bird Survey
 - Autumn 2009, Call Playback
 - Autumn 2009, Frog Spotlight
 - Autumn 2009, Habitat Assessment
 - Autumn 2009, Spotlighting
- Survey transects**
- Summer 2007 - Bird Survey
 - Summer 2007 - Elliot Trap
 - Summer 2007 - Cage Trap
 - Summer 2007 - Elliot Trap/Cage Trap/Bird Survey
 - Summer 2007 - Elliot Trap/Cage Trap/Bird Survey/Spotlighting
 - Summer 2007 - Spotlighting
 - Summer 2007 - Spotlighting/Nocturnal Bird Survey
 - Spring 2008 - Bird survey
 - Spring 2008 - Elliot Trap/Cage Trap
 - Spring 2008 - Elliot Trap/Cage Trap/Hair Tube
 - Spring 2008 - Spotlighting
 - Spring 2008 - Spotlighting/Nocturnal Bird Survey
 - Autumn 2009 - Bird survey
 - Autumn 2009 - Cage Trap
 - Autumn 2009 - Spotlighting
 - Spring 2011 - Town Creek general survey and habitat assessments
- Subject Site**
- Temporary Creek Crossings
 - Footprint
- Ancillary Sites**
- Subject Site - Compound
 - Subject Site - Stockpile
 - Study Area
 - RoadNameExtent



Biosis Research Pty. Ltd.
18-20 Mandible Street
Alexandria
NEW SOUTH WALES
2015

Figure 2.3.17: Location of fauna survey effort

Date: 1 August 2012

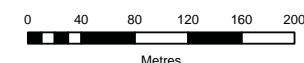
Drawn by: RS/JMS/ANP

File: 13194

Checked by: JC

Location: P:\15000s\15039\Mapping\Variation 2\Variation 2 figures\15039_S2_F2-3_survey_fauna_010812.mxd

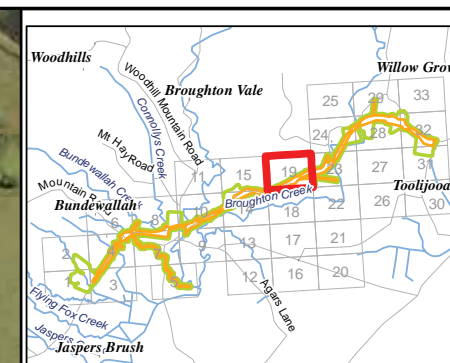
Acknowledgements:
Aerial imagery provided by ARUP
This product incorporates Data which is
copyright to the Commonwealth of Australia (c.2003)



Scale: 1: 4,000 at A3
Map Projection: Transverse Mercator
Horizontal Datum: Geocentric Datum of Australia 1994
Grid: Map Grid of Australia, Zone 56



Figure 2.3



- Legend**
- Survey points**
- Summer 2007, Anabat
 - Summer 2007, Anabat/Harp Trap
 - Summer 2007, Anabat/Owl Call Playback
 - Summer 2007, Bird Survey
 - Summer 2007, Habitat Assessment
 - Summer 2007, Harp Trap
 - Summer 2007, Owl Call Playback
 - Summer 2007, Spotlighting
 - Spring 2008, Anabat
 - Spring 2008, Bird Survey
 - Spring 2008, Frog Spotlight
 - Spring 2008, Habitat Assessment
 - Spring 2008, Owl Call Playback
 - Autumn 2009, Bird Survey
 - Autumn 2009, Call Playback
 - Autumn 2009, Frog Spotlight
 - Autumn 2009, Habitat Assessment
 - Autumn 2009, Spotlighting
- Survey transects**
- Summer 2007 - Bird Survey
 - Summer 2007 - Elliot Trap
 - Summer 2007 - Cage Trap
 - Summer 2007 - Elliot Trap/Cage Trap/Bird Survey
 - Summer 2007 - Elliot Trap/Cage Trap/Bird Survey/Spotlighting
 - Summer 2007 - Spotlighting
 - Summer 2007 - Spotlighting/Nocturnal Bird Survey
 - Spring 2008 - Bird survey
 - Spring 2008 - Elliot Trap/Cage Trap
 - Spring 2008 - Elliot Trap/Cage Trap/Hair Tube
 - Spring 2008 - Spotlighting
 - Spring 2008 - Spotlighting/Nocturnal Bird Survey
 - Autumn 2009 - Bird survey
 - Autumn 2009 - Cage Trap
 - Autumn 2009 - Spotlighting
 - Spring 2011 - Town Creek general survey and habitat assessments
- Subject Site - Temporary Creek Crossings**
- Subject Site - Footprint**
- Ancillary Sites**
- Subject Site - Compound
 - Subject Site - Stockpile
 - Study Area
 - RoadNameExtent



Biosis Research Pty. Ltd.
18-20 Mandible Street
Alexandria
NEW SOUTH WALES
2015

Figure 2.3.19: Location of fauna survey effort

Date: 1 August 2012

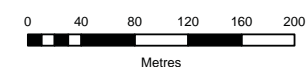
Drawn by: RS/JMS/ANP

File: 13194

Checked by: JC

Location: P:\15000s\15039\Mapping\Variation 2\Variation 2 figures\15039_S2_F2-3_survey_fauna_010812.mxd

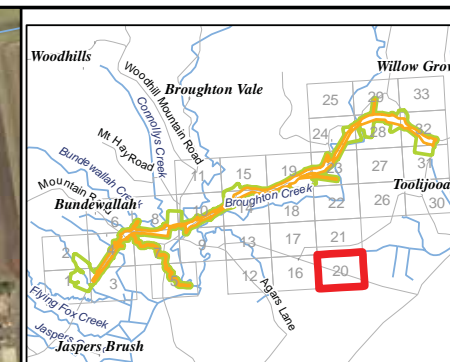
Acknowledgements:
Aerial imagery provided by ARUP
This product incorporates Data which is
copyright to the Commonwealth of Australia (c.2003)



Scale: 1: 4,000 at A3
Map Projection: Transverse Mercator
Horizontal Datum: Geocentric Datum of Australia 1994
Grid: Map Grid of Australia, Zone 56



Figure 2.3



- Legend**
- Survey points**
- Summer 2007, Anabat
 - Summer 2007, Anabat/Harp Trap
 - Summer 2007, Anabat/Owl Call Playback
 - Summer 2007, Bird Survey
 - Summer 2007, Habitat Assessment
 - Summer 2007, Harp Trap
 - Summer 2007, Owl Call Playback
 - Summer 2007, Spotlighting
 - Spring 2008, Anabat
 - Spring 2008, Bird Survey
 - Spring 2008, Frog Spotlight
 - Spring 2008, Habitat Assessment
 - Spring 2008, Owl Call Playback
 - Autumn 2009, Bird Survey
 - Autumn 2009, Call Playback
 - Autumn 2009, Frog Spotlight
 - Autumn 2009, Habitat Assessment
 - Autumn 2009, Spotlighting
- Survey transects**
- Summer 2007 - Bird Survey
 - Summer 2007 - Elliot Trap
 - Summer 2007 - Cage Trap
 - Summer 2007 - Elliot Trap/Cage Trap/Bird Survey
 - Summer 2007 - Elliot Trap/Cage Trap/Bird Survey/Spotlighting
 - Summer 2007 - Spotlighting
 - Summer 2007 - Spotlighting/Nocturnal Bird Survey
 - Spring 2008 - Bird survey
 - Spring 2008 - Elliot Trap/Cage Trap
 - Spring 2008 - Elliot Trap/Cage Trap/Hair Tube
 - Spring 2008 - Spotlighting
 - Spring 2008 - Spotlighting/Nocturnal Bird Survey
 - Autumn 2009 - Bird survey
 - Autumn 2009 - Cage Trap
 - Autumn 2009 - Spotlighting
 - Spring 2011 - Town Creek general survey and habitat assessments
- Subject Site - Temporary Creek Crossings**
- Subject Site - Footprint
- Ancillary Sites**
- Subject Site - Compound
 - Subject Site - Stockpile
 - Study Area
 - RoadNameExtent



Biosis Research Pty. Ltd.
18-20 Mandible Street
Alexandria
NEW SOUTH WALES
2015

Figure 2.3.20: Location of fauna survey effort

Date: 1 August 2012

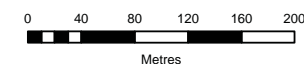
Drawn by: RS/JMS/ANP

File: 13194

Checked by: JC

Location: P:\15000s\15039\Mapping\Variation 2\Variation 2 figures\15039_S2_F2-3_survey_fauna_010812.mxd

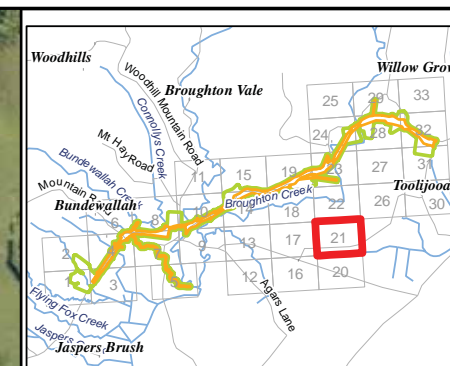
Acknowledgements:
Aerial imagery provided by ARUP
This product incorporates Data which is
copyright to the Commonwealth of Australia (c.2003)



Scale: 1: 4,000 at A3
Map Projection: Transverse Mercator
Horizontal Datum: Geocentric Datum of Australia 1994
Grid: Map Grid of Australia, Zone 56



Figure 2.3



- Legend**
- Survey points**
- Summer 2007, Anabat
 - Summer 2007, Anabat/Harp Trap
 - Summer 2007, Anabat/Owl Call Playback
 - Summer 2007, Bird Survey
 - Summer 2007, Habitat Assessment
 - Summer 2007, Harp Trap
 - Summer 2007, Owl Call Playback
 - Summer 2007, Spotlighting
 - Spring 2008, Anabat
 - Spring 2008, Bird Survey
 - Spring 2008, Frog Spotlight
 - Spring 2008, Habitat Assessment
 - Spring 2008, Owl Call Playback
 - Autumn 2009, Bird Survey
 - Autumn 2009, Call Playback
 - Autumn 2009, Frog Spotlight
 - Autumn 2009, Habitat Assessment
 - Autumn 2009, Spotlighting
- Survey transects**
- Summer 2007 - Bird Survey
 - Summer 2007 - Elliot Trap
 - Summer 2007 - Cage Trap
 - Summer 2007 - Elliot Trap/Cage Trap/Bird Survey
 - Summer 2007 - Elliot Trap/Cage Trap/Bird Survey/Spotlighting
 - Summer 2007 - Spotlighting
 - Summer 2007 - Spotlighting/Nocturnal Bird Survey
 - Spring 2008 - Bird survey
 - Spring 2008 - Elliot Trap/Cage Trap
 - Spring 2008 - Elliot Trap/Cage Trap/Hair Tube
 - Spring 2008 - Spotlighting
 - Spring 2008 - Spotlighting/Nocturnal Bird Survey
 - Autumn 2009 - Bird survey
 - Autumn 2009 - Cage Trap
 - Autumn 2009 - Spotlighting
 - Spring 2011 - Town Creek general survey and habitat assessments
- Subject Site - Temporary Creek Crossings**
- Subject Site - Footprint**
- Ancillary Sites**
- Subject Site - Compound
 - Subject Site - Stockpile
 - Study Area
 - RoadNameExtent



Biosis Research Pty. Ltd.
18-20 Mandible Street
Alexandria
NEW SOUTH WALES
2015

Figure 2.3.21: Location of fauna survey effort

Date: 1 August 2012

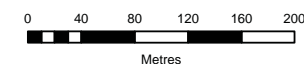
Drawn by: RS/JMS/ANP

File: 13194

Checked by: JC

Location: P:\15000s\15039\Mapping\Variation 2\Variation 2 figures\15039_S2_F2-3_survey_fauna_010812.mxd

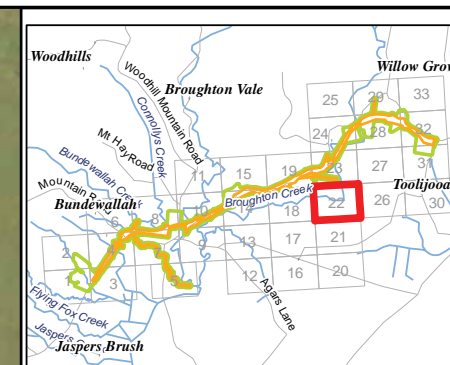
Acknowledgements:
Aerial imagery provided by ARUP
This product incorporates Data which is
copyright to the Commonwealth of Australia (c.2003)



Scale: 1: 4,000 at A3
Map Projection: Transverse Mercator
Horizontal Datum: Geocentric Datum of Australia 1994
Grid: Map Grid of Australia, Zone 56



Figure 2.3



Legend

Survey points

- Summer 2007, Anabat
- Summer 2007, Anabat/Harp Trap
- Summer 2007, Anabat/Owl Call Playback
- Summer 2007, Bird Survey
- Summer 2007, Habitat Assessment
- Summer 2007, Harp Trap
- Summer 2007, Owl Call Playback
- Summer 2007, Spotlighting
- Spring 2008, Anabat
- Spring 2008, Bird Survey
- Spring 2008, Frog Spotlight
- Spring 2008, Habitat Assessment
- Spring 2008, Owl Call Playback
- Autumn 2009, Bird Survey
- Autumn 2009, Call Playback
- Autumn 2009, Frog Spotlight
- Autumn 2009, Habitat Assessment
- Autumn 2009, Spotlighting

Survey transects

- Summer 2007 - Bird Survey
- Summer 2007 - Elliot Trap
- Summer 2007 - Cage Trap
- Summer 2007 - Elliot Trap/Cage Trap/Bird Survey
- Summer 2007 - Elliot Trap/Cage Trap/Bird Survey/Spotlighting
- Summer 2007 - Spotlighting
- Summer 2007 - Spotlighting/Nocturnal Bird Survey
- Spring 2008 - Bird survey
- Spring 2008 - Elliot Trap/Cage Trap
- Spring 2008 - Elliot Trap/Cage Trap/Hair Tube
- Spring 2008 - Spotlighting
- Spring 2008 - Spotlighting/Nocturnal Bird Survey
- Autumn 2009 - Bird survey
- Autumn 2009 - Cage Trap
- Autumn 2009 - Spotlighting
- Spring 2011 - Town Creek general survey and habitat assessments

Subject Site - Temporary Creek Crossings

Subject Site - Footprint

Ancillary Sites

- Subject Site - Compound
- Subject Site - Stockpile
- Study Area
- RoadNameExtent

Figure 2.3.22: Location of fauna survey effort

Date: 1 August 2012

Drawn by: RS/JMS/ANP

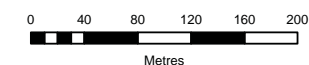
File: 13194

Checked by: JC

Location: P:\15000s\15039\Mapping\Variation 2\Variation 2 figures\15039_S2_F2-3_survey_fauna_010812.mxd

Acknowledgements:

Aerial imagery provided by ARUP
This product incorporates Data which is
copyright to the Commonwealth of Australia (c.2003)



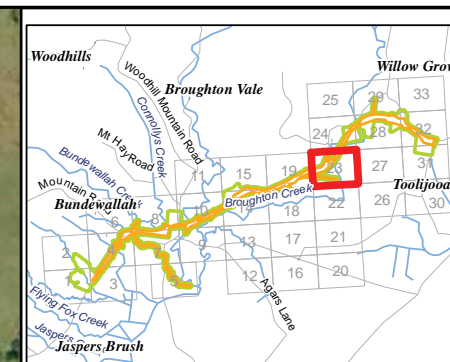
Scale: 1: 4,000 at A3
Map Projection: Transverse Mercator
Horizontal Datum: Geocentric Datum of Australia 1994
Grid: Map Grid of Australia, Zone 56

Ü

Figure 2.3



Biosis Research Pty. Ltd.
18-20 Mandible Street
Alexandria
NEW SOUTH WALES
2015



- Legend**
- Survey points**
- Summer 2007, Anabat
 - Summer 2007, Anabat/Harp Trap
 - Summer 2007, Anabat/Owl Call Playback
 - Summer 2007, Bird Survey
 - Summer 2007, Habitat Assessment
 - Summer 2007, Harp Trap
 - Summer 2007, Owl Call Playback
 - Summer 2007, Spotlighting
 - Spring 2008, Anabat
 - Spring 2008, Bird Survey
 - Spring 2008, Frog Spotlight
 - Spring 2008, Habitat Assessment
 - Spring 2008, Owl Call Playback
 - Autumn 2009, Bird Survey
 - Autumn 2009, Call Playback
 - Autumn 2009, Frog Spotlight
 - Autumn 2009, Habitat Assessment
 - Autumn 2009, Spotlighting
- Survey transects**
- Summer 2007 - Bird Survey
 - Summer 2007 - Elliot Trap
 - Summer 2007 - Cage Trap
 - Summer 2007 - Elliot Trap/Cage Trap/Bird Survey
 - Summer 2007 - Elliot Trap/Cage Trap/Bird Survey/Spotlighting
 - Summer 2007 - Spotlighting
 - Summer 2007 - Spotlighting/Nocturnal Bird Survey
 - Spring 2008 - Bird survey
 - Spring 2008 - Elliot Trap/Cage Trap
 - Spring 2008 - Elliot Trap/Cage Trap/Hair Tube
 - Spring 2008 - Spotlighting
 - Spring 2008 - Spotlighting/Nocturnal Bird Survey
 - Autumn 2009 - Bird survey
 - Autumn 2009 - Cage Trap
 - Autumn 2009 - Spotlighting
 - Spring 2011 - Town Creek general survey and habitat assessments
- Subject Site - Temporary Creek Crossings**
- Subject Site - Footprint**
- Ancillary Sites**
- Subject Site - Compound
 - Subject Site - Stockpile
 - Study Area
 - RoadNameExtent



Biosis Research Pty. Ltd.
18-20 Mandible Street
Alexandria
NEW SOUTH WALES
2015

Figure 2.3.23: Location of fauna survey effort

Date: 1 August 2012

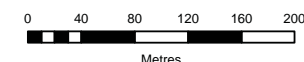
Drawn by: RS/JMS/ANP

File: 13194

Checked by: JC

Location: P:\15000s\15039\Mapping\Variation 2\Variation 2 figures\15039_S2_F2-3_survey_fauna_010812.mxd

Acknowledgements:
Aerial imagery provided by ARUP
This product incorporates Data which is
copyright to the Commonwealth of Australia (c.2003)



Scale: 1: 4,000 at A3
Map Projection: Transverse Mercator
Horizontal Datum: Geocentric Datum of Australia 1994
Grid: Map Grid of Australia, Zone 56



Figure 2.3



Figure 2.3.24: Location of fauna survey effort

Date: 1 August 2012

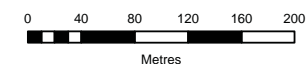
Drawn by: RS/JMS/ANP

File: 13194

Checked by: JC

Location: P:\15000s\15039\Mapping\Variation 2\Variation 2 figures\15039_S2_F2-3_survey_fauna_010812.mxd

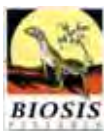
Acknowledgements:
Aerial imagery provided by ARUP
This product incorporates Data which is
copyright to the Commonwealth of Australia (c.2003)



Scale: 1: 4,000 at A3
Map Projection: Transverse Mercator
Horizontal Datum: Geocentric Datum of Australia 1994
Grid: Map Grid of Australia, Zone 56

Ü

Figure 2.3



Biosis Research Pty. Ltd.
18-20 Mandible Street
Alexandria
NEW SOUTH WALES
2015

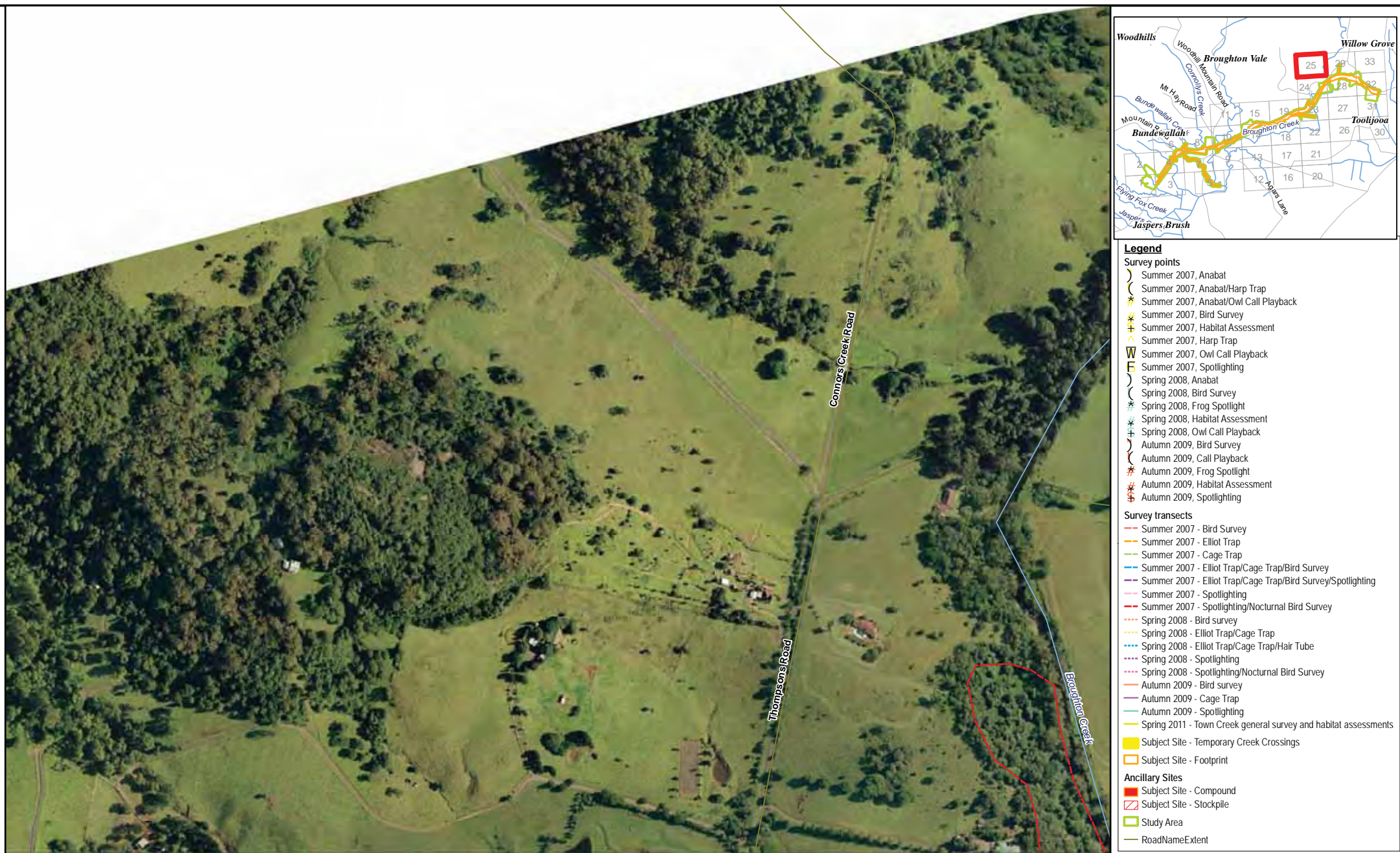


Figure 2.3.25: Location of fauna survey effort

Date: 1 August 2012

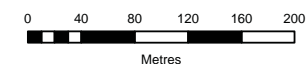
Drawn by: RS/JMS/ANP

File: 13194

Checked by: JC

Location: P:\15000s\15039\Mapping\Variation 2\Variation 2 figures\15039_S2_F2-3_survey_fauna_010812.mxd

Acknowledgements:
Aerial imagery provided by ARUP
This product incorporates Data which is
copyright to the Commonwealth of Australia (c.2003)



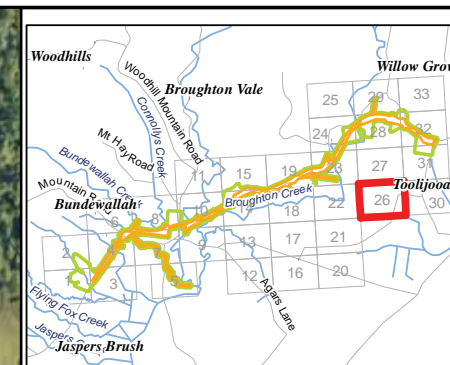
Scale: 1: 4,000 at A3
Map Projection: Transverse Mercator
Horizontal Datum: Geocentric Datum of Australia 1994
Grid: Map Grid of Australia, Zone 56

Ü

Figure 2.3



Biosis Research Pty. Ltd.
18-20 Mandible Street
Alexandria
NEW SOUTH WALES
2015



Legend

Survey points

- Summer 2007, Anabat
- Summer 2007, Anabat/Harp Trap
- Summer 2007, Anabat/Owl Call Playback
- Summer 2007, Bird Survey
- Summer 2007, Habitat Assessment
- Summer 2007, Harp Trap
- Summer 2007, Owl Call Playback
- Summer 2007, Spotlighting
- Spring 2008, Anabat
- Spring 2008, Bird Survey
- Spring 2008, Frog Spotlight
- Spring 2008, Habitat Assessment
- Spring 2008, Owl Call Playback
- Autumn 2009, Bird Survey
- Autumn 2009, Call Playback
- Autumn 2009, Frog Spotlight
- Autumn 2009, Habitat Assessment
- Autumn 2009, Spotlighting

Survey transects

- Summer 2007 - Bird Survey
- Summer 2007 - Elliot Trap
- Summer 2007 - Cage Trap
- Summer 2007 - Elliot Trap/Cage Trap/Bird Survey
- Summer 2007 - Elliot Trap/Cage Trap/Bird Survey/Spotlighting
- Summer 2007 - Spotlighting
- Summer 2007 - Spotlighting/Nocturnal Bird Survey
- Spring 2008 - Bird survey
- Spring 2008 - Elliot Trap/Cage Trap
- Spring 2008 - Elliot Trap/Cage Trap/Hair Tube
- Spring 2008 - Spotlighting
- Spring 2008 - Spotlighting/Nocturnal Bird Survey
- Autumn 2009 - Bird survey
- Autumn 2009 - Cage Trap
- Autumn 2009 - Spotlighting
- Spring 2011 - Town Creek general survey and habitat assessments

Subject Site - Temporary Creek Crossings

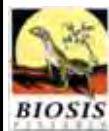
Subject Site - Footprint

Ancillary Sites

- Subject Site - Compound
- Subject Site - Stockpile

Study Area

RoadNameExtent



Biosis Research Pty. Ltd.
18-20 Mandible Street
Alexandria
NEW SOUTH WALES
2015

Figure 2.3.26: Location of fauna survey effort

Date: 1 August 2012

Drawn by: RS/JMS/ANP

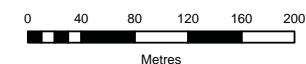
File: 13194

Checked by: JC

Location: P:\15000s\15039\Mapping\Variation 2\Variation 2 figures\15039_S2_F2-3_survey_fauna_010812.mxd

Acknowledgements:

Aerial imagery provided by ARUP
This product incorporates Data which is
copyright to the Commonwealth of Australia (c.2003)



Scale: 1: 4,000 at A3

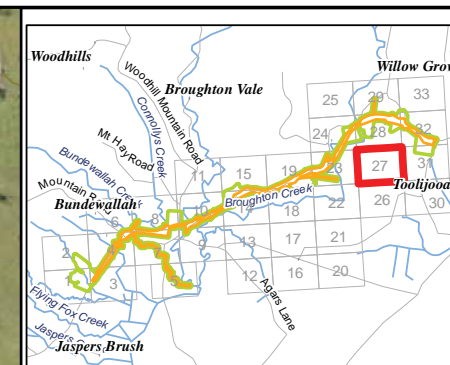
Map Projection: Transverse Mercator

Horizontal Datum: Geocentric Datum of Australia 1994

Grid: Map Grid of Australia, Zone 56



Figure 2.3



Legend

Survey points

- Summer 2007, Anabat
- Summer 2007, Anabat/Harp Trap
- Summer 2007, Anabat/Owl Call Playback
- Summer 2007, Bird Survey
- Summer 2007, Habitat Assessment
- Summer 2007, Harp Trap
- Summer 2007, Owl Call Playback
- Summer 2007, Spotlighting
- Spring 2008, Anabat
- Spring 2008, Bird Survey
- Spring 2008, Frog Spotlight
- Spring 2008, Habitat Assessment
- Spring 2008, Owl Call Playback
- Autumn 2009, Bird Survey
- Autumn 2009, Call Playback
- Autumn 2009, Frog Spotlight
- Autumn 2009, Habitat Assessment
- Autumn 2009, Spotlighting

Survey transects

- Summer 2007 - Bird Survey
- Summer 2007 - Elliot Trap
- Summer 2007 - Cage Trap
- Summer 2007 - Elliot Trap/Cage Trap/Bird Survey
- Summer 2007 - Elliot Trap/Cage Trap/Bird Survey/Spotlighting
- Summer 2007 - Spotlighting
- Summer 2007 - Spotlighting/Nocturnal Bird Survey
- Spring 2008 - Bird survey
- Spring 2008 - Elliot Trap/Cage Trap
- Spring 2008 - Elliot Trap/Cage Trap/Hair Tube
- Spring 2008 - Spotlighting
- Spring 2008 - Spotlighting/Nocturnal Bird Survey
- Autumn 2009 - Bird survey
- Autumn 2009 - Cage Trap
- Autumn 2009 - Spotlighting
- Spring 2011 - Town Creek general survey and habitat assessments

Subject Site - Temporary Creek Crossings

Subject Site - Footprint

Ancillary Sites

- Subject Site - Compound
- Subject Site - Stockpile
- Study Area
- RoadNameExtent

Figure 2.3.27: Location of fauna survey effort

Date: 1 August 2012

Drawn by: RS/JMS/ANP

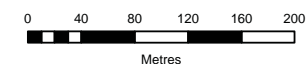
File: 13194

Checked by: JC

Location: P:\15000s\15039\Mapping\Variation 2\Variation 2 figures\15039_S2_F2-3_survey_fauna_010812.mxd

Acknowledgements:

Aerial imagery provided by ARUP
This product incorporates Data which is
copyright to the Commonwealth of Australia (c.2003)



Scale: 1: 4,000 at A3

Map Projection: Transverse Mercator

Horizontal Datum: Geocentric Datum of Australia 1994

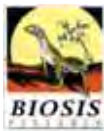
Grid: Map Grid of Australia, Zone 56

Ü

Figure 2.3



Biosis Research Pty. Ltd.
18-20 Mandible Street
Alexandria
NEW SOUTH WALES
2015



Biosis Research Pty. Ltd.
18-20 Mandible Street
Alexandria
NEW SOUTH WALES
2015

Figure 2.3.28: Location of fauna survey effort

Date: 1 August 2012

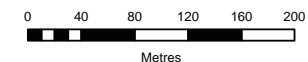
Drawn by: RS/JMS/ANP

File: 13194

Checked by: JC

Location: P:\15000s\15039\Mapping\Variation 2\Variation 2 figures\15039_S2_F2-3_survey_fauna_010812.mxd

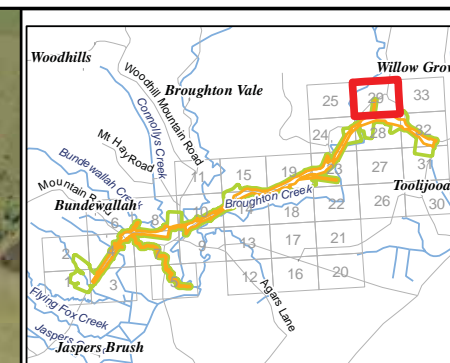
Acknowledgements:
Aerial imagery provided by ARUP
This product incorporates Data which is
copyright to the Commonwealth of Australia (c.2003)



Scale: 1: 4,000 at A3
Map Projection: Transverse Mercator
Horizontal Datum: Geocentric Datum of Australia 1994
Grid: Map Grid of Australia, Zone 56



Figure 2.3



- Legend**
- Survey points**
- Summer 2007, Anabat
 - Summer 2007, Anabat/Harp Trap
 - Summer 2007, Anabat/Owl Call Playback
 - Summer 2007, Bird Survey
 - Summer 2007, Habitat Assessment
 - Summer 2007, Harp Trap
 - Summer 2007, Owl Call Playback
 - Summer 2007, Spotlighting
 - Spring 2008, Anabat
 - Spring 2008, Bird Survey
 - Spring 2008, Frog Spotlight
 - Spring 2008, Habitat Assessment
 - Spring 2008, Owl Call Playback
 - Autumn 2009, Bird Survey
 - Autumn 2009, Call Playback
 - Autumn 2009, Frog Spotlight
 - Autumn 2009, Habitat Assessment
 - Autumn 2009, Spotlighting
- Survey transects**
- Summer 2007 - Bird Survey
 - Summer 2007 - Elliot Trap
 - Summer 2007 - Cage Trap
 - Summer 2007 - Elliot Trap/Cage Trap/Bird Survey
 - Summer 2007 - Elliot Trap/Cage Trap/Bird Survey/Spotlighting
 - Summer 2007 - Spotlighting
 - Summer 2007 - Spotlighting/Nocturnal Bird Survey
 - Spring 2008 - Bird survey
 - Spring 2008 - Elliot Trap/Cage Trap
 - Spring 2008 - Elliot Trap/Cage Trap/Hair Tube
 - Spring 2008 - Spotlighting
 - Spring 2008 - Spotlighting/Nocturnal Bird Survey
 - Autumn 2009 - Bird survey
 - Autumn 2009 - Cage Trap
 - Autumn 2009 - Spotlighting
 - Spring 2011 - Town Creek general survey and habitat assessments
- Subject Site - Temporary Creek Crossings**
- Subject Site - Footprint**
- Ancillary Sites**
- Subject Site - Compound
 - Subject Site - Stockpile
 - Study Area
 - RoadNameExtent



Biosis Research Pty. Ltd.
18-20 Mandible Street
Alexandria
NEW SOUTH WALES
2015

Figure 2.3.29: Location of fauna survey effort

Date: 1 August 2012

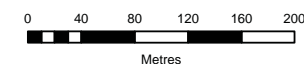
Drawn by: RS/JMS/ANP

File: 13194

Checked by: JC

Location: P:\15000s\15039\Mapping\Variation 2\Variation 2 figures\15039_S2_F2-3_survey_fauna_010812.mxd

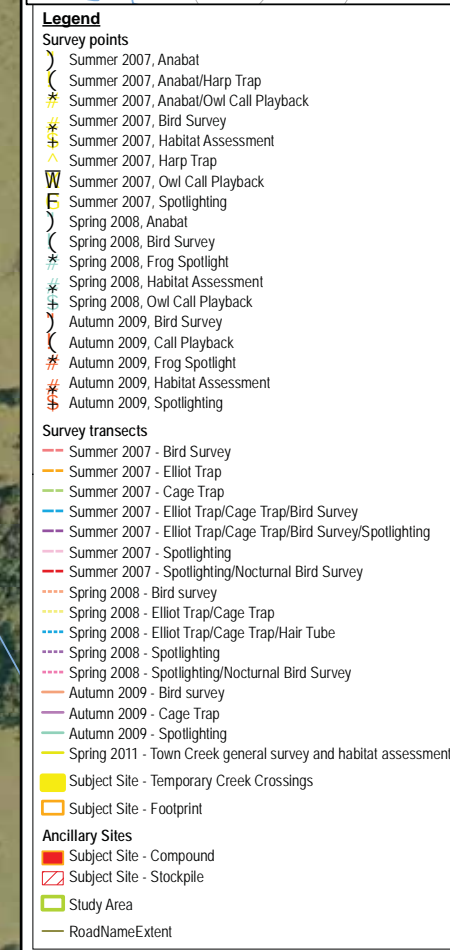
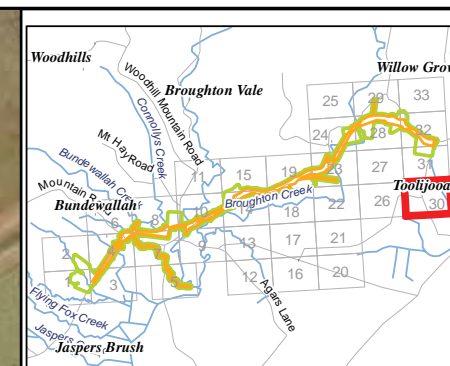
Acknowledgements:
Aerial imagery provided by ARUP
This product incorporates Data which is
copyright to the Commonwealth of Australia (c.2003)



Scale: 1: 4,000 at A3
Map Projection: Transverse Mercator
Horizontal Datum: Geocentric Datum of Australia 1994
Grid: Map Grid of Australia, Zone 56



Figure 2.3



Biosis Research Pty. Ltd.
18-20 Mandible Street
Alexandria
NEW SOUTH WALES
2015

Figure 2.3.30: Location of fauna survey effort

Date: 1 August 2012

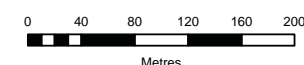
Drawn by: RS/JMS/ANP

File: 13194

Checked by: JC

Location: P:\15000s\15039\Mapping\Variation 2\Variation 2 figures\15039_S2_F2-3_survey_fauna_010812.mxd

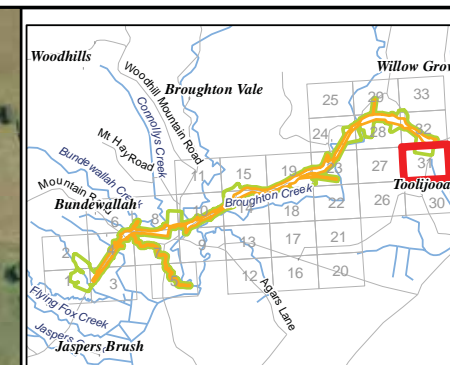
Acknowledgements:
Aerial imagery provided by ARUP
This product incorporates Data which is
copyright to the Commonwealth of Australia (c.2003)



Scale: 1: 4,000 at A3
Map Projection: Transverse Mercator
Horizontal Datum: Geocentric Datum of Australia 1994
Grid: Map Grid of Australia, Zone 56



Figure 2.3



Legend

Survey points

- Summer 2007, Anabat
- Summer 2007, Anabat/Harp Trap
- Summer 2007, Anabat/Owl Call Playback
- Summer 2007, Bird Survey
- Summer 2007, Habitat Assessment
- Summer 2007, Harp Trap
- Summer 2007, Owl Call Playback
- Summer 2007, Spotlighting
- Spring 2008, Anabat
- Spring 2008, Bird Survey
- Spring 2008, Frog Spotlight
- Spring 2008, Habitat Assessment
- Spring 2008, Owl Call Playback
- Autumn 2009, Bird Survey
- Autumn 2009, Call Playback
- Autumn 2009, Frog Spotlight
- Autumn 2009, Habitat Assessment
- Autumn 2009, Spotlighting

Survey transects

- Summer 2007 - Bird Survey
- Summer 2007 - Elliot Trap
- Summer 2007 - Cage Trap
- Summer 2007 - Elliot Trap/Cage Trap/Bird Survey
- Summer 2007 - Elliot Trap/Cage Trap/Bird Survey/Spotlighting
- Summer 2007 - Spotlighting
- Summer 2007 - Spotlighting/Nocturnal Bird Survey
- Spring 2008 - Bird survey
- Spring 2008 - Elliot Trap/Cage Trap
- Spring 2008 - Elliot Trap/Cage Trap/Hair Tube
- Spring 2008 - Spotlighting
- Spring 2008 - Spotlighting/Nocturnal Bird Survey
- Autumn 2009 - Bird survey
- Autumn 2009 - Cage Trap
- Autumn 2009 - Spotlighting
- Spring 2011 - Town Creek general survey and habitat assessments

Subject Site - Temporary Creek Crossings

Subject Site - Footprint

Ancillary Sites

- Subject Site - Compound
- Subject Site - Stockpile
- Study Area
- RoadNameExtent



Biosis Research Pty. Ltd.
18-20 Mandible Street
Alexandria
NEW SOUTH WALES
2015

Figure 2.3.31: Location of fauna survey effort

Date: 1 August 2012

Drawn by: RS/JMS/ANP

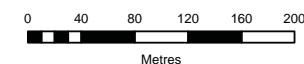
File: 13194

Checked by: JC

Location: P:\15000s\15039\Mapping\Variation 2\Variation 2 figures\15039_S2_F2-3_survey_fauna_010812.mxd

Acknowledgements:

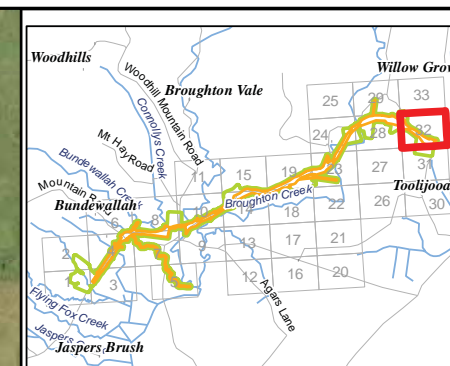
Aerial imagery provided by ARUP
This product incorporates Data which is
copyright to the Commonwealth of Australia (c.2003)



Scale: 1: 4,000 at A3
Map Projection: Transverse Mercator
Horizontal Datum: Geocentric Datum of Australia 1994
Grid: Map Grid of Australia, Zone 56



Figure 2.3



Legend

Survey points

- Summer 2007, Anabat
- Summer 2007, Anabat/Harp Trap
- Summer 2007, Anabat/Owl Call Playback
- Summer 2007, Bird Survey
- Summer 2007, Habitat Assessment
- Summer 2007, Harp Trap
- Summer 2007, Owl Call Playback
- Summer 2007, Spotlighting
- Spring 2008, Anabat
- Spring 2008, Bird Survey
- Spring 2008, Frog Spotlight
- Spring 2008, Habitat Assessment
- Spring 2008, Owl Call Playback
- Autumn 2009, Bird Survey
- Autumn 2009, Call Playback
- Autumn 2009, Frog Spotlight
- Autumn 2009, Habitat Assessment
- Autumn 2009, Spotlighting

Survey transects

- Summer 2007 - Bird Survey
- Summer 2007 - Elliot Trap
- Summer 2007 - Cage Trap
- Summer 2007 - Elliot Trap/Cage Trap/Bird Survey
- Summer 2007 - Elliot Trap/Cage Trap/Bird Survey/Spotlighting
- Summer 2007 - Spotlighting
- Summer 2007 - Spotlighting/Nocturnal Bird Survey
- Spring 2008 - Bird survey
- Spring 2008 - Elliot Trap/Cage Trap
- Spring 2008 - Elliot Trap/Cage Trap/Hair Tube
- Spring 2008 - Spotlighting
- Spring 2008 - Spotlighting/Nocturnal Bird Survey
- Autumn 2009 - Bird survey
- Autumn 2009 - Cage Trap
- Autumn 2009 - Spotlighting
- Spring 2011 - Town Creek general survey and habitat assessments

Subject Site - Temporary Creek Crossings

Subject Site - Footprint

Ancillary Sites

- Subject Site - Compound
- Subject Site - Stockpile
- Study Area
- RoadNameExtent



Biosis Research Pty. Ltd.
18-20 Mandible Street
Alexandria
NEW SOUTH WALES
2015

Figure 2.3.32: Location of fauna survey effort

Date: 1 August 2012

Drawn by: RS/JMS/ANP

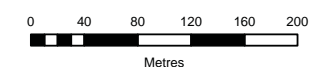
File: 13194

Checked by: JC

Location: P:\15000s\15039\Mapping\Variation 2\Variation 2 figures\15039_S2_F2-3_survey_fauna_010812.mxd

Acknowledgements:

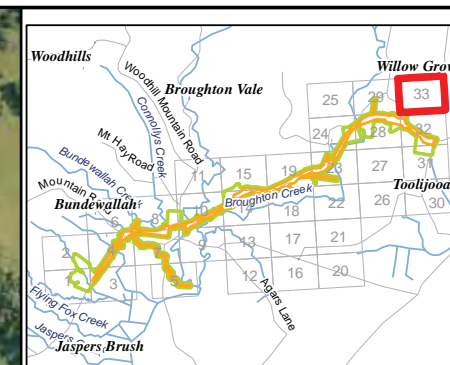
Aerial imagery provided by ARUP
This product incorporates Data which is
copyright to the Commonwealth of Australia (c.2003)



Scale: 1: 4,000 at A3
Map Projection: Transverse Mercator
Horizontal Datum: Geocentric Datum of Australia 1994
Grid: Map Grid of Australia, Zone 56

Ü

Figure 2.3



Legend

Survey points

- Summer 2007, Anabat
- Summer 2007, Anabat/Harp Trap
- Summer 2007, Anabat/Owl Call Playback
- Summer 2007, Bird Survey
- Summer 2007, Habitat Assessment
- Summer 2007, Harp Trap
- Summer 2007, Owl Call Playback
- Summer 2007, Spotlighting
- Spring 2008, Anabat
- Spring 2008, Bird Survey
- Spring 2008, Frog Spotlight
- Spring 2008, Habitat Assessment
- Spring 2008, Owl Call Playback
- Autumn 2009, Bird Survey
- Autumn 2009, Call Playback
- Autumn 2009, Frog Spotlight
- Autumn 2009, Habitat Assessment
- Autumn 2009, Spotlighting

Survey transects

- Summer 2007 - Bird Survey
- Summer 2007 - Elliot Trap
- Summer 2007 - Cage Trap
- Summer 2007 - Elliot Trap/Cage Trap/Bird Survey
- Summer 2007 - Elliot Trap/Cage Trap/Bird Survey/Spotlighting
- Summer 2007 - Spotlighting
- Summer 2007 - Spotlighting/Nocturnal Bird Survey
- Spring 2008 - Bird survey
- Spring 2008 - Elliot Trap/Cage Trap
- Spring 2008 - Elliot Trap/Cage Trap/Hair Tube
- Spring 2008 - Spotlighting
- Spring 2008 - Spotlighting/Nocturnal Bird Survey
- Autumn 2009 - Bird survey
- Autumn 2009 - Cage Trap
- Autumn 2009 - Spotlighting
- Spring 2011 - Town Creek general survey and habitat assessments

Subject Site - Temporary Creek Crossings

Subject Site - Footprint

Ancillary Sites

- Subject Site - Compound
- Subject Site - Stockpile
- Study Area
- RoadNameExtent

Figure 2.3.33: Location of fauna survey effort

Date: 1 August 2012

Drawn by: RS/JMS/ANP

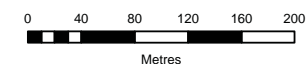
File: 13194

Checked by: JC

Location: P:\15000s\15039\Mapping\Variation 2\Variation 2 figures\15039_S2_F2-3_survey_fauna_010812.mxd

Acknowledgements:

Aerial imagery provided by ARUP
This product incorporates Data which is
copyright to the Commonwealth of Australia (c.2003)



Scale: 1: 4,000 at A3

Map Projection: Transverse Mercator

Horizontal Datum: Geocentric Datum of Australia 1994

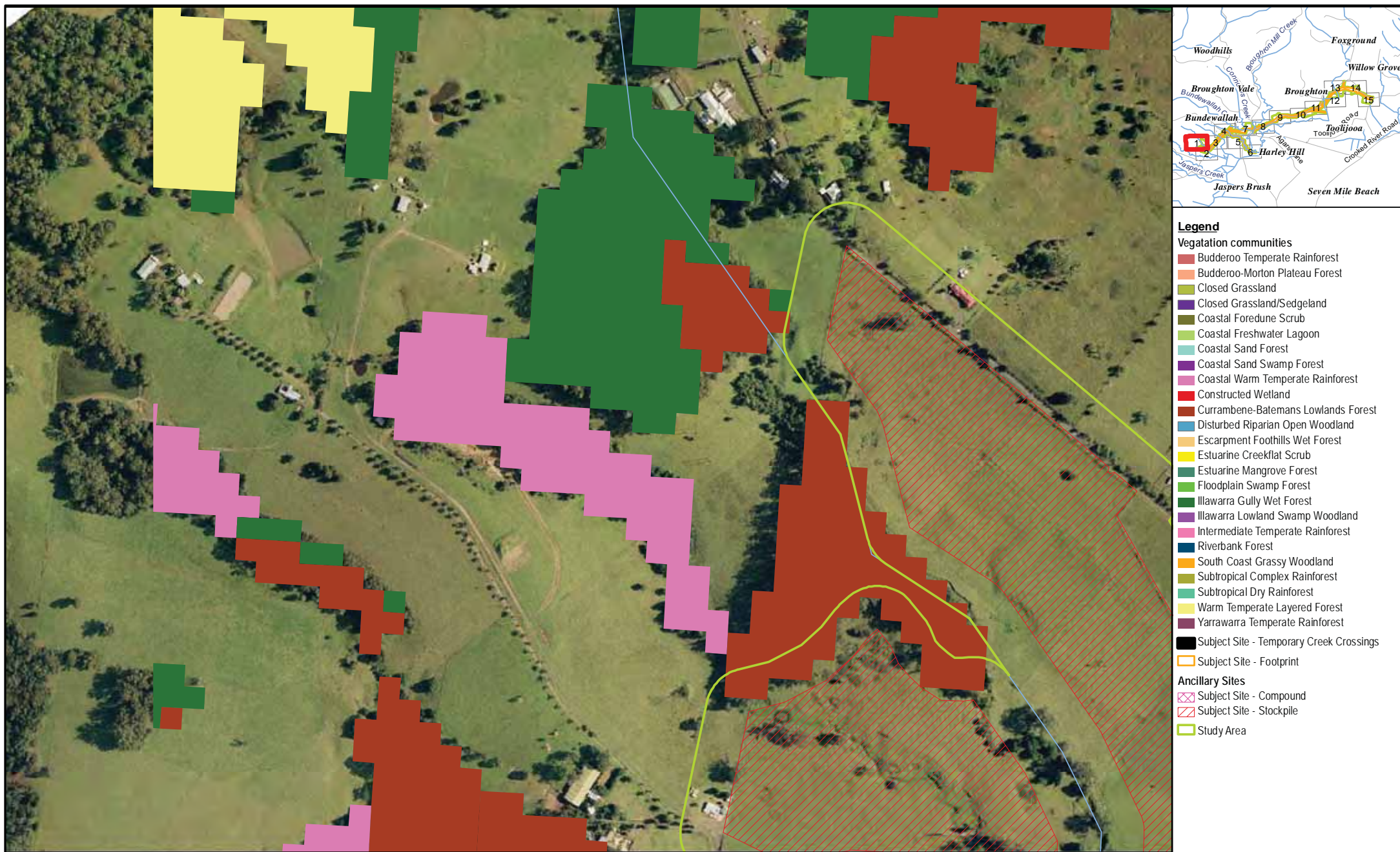
Grid: Map Grid of Australia, Zone 56

Ü

Figure 2.3



Biosis Research Pty. Ltd.
18-20 Mandible Street
Alexandria
NEW SOUTH WALES
2015



BIOSIS Research Pty. Ltd.
18-20 Mandible Street
Alexandria
NEW SOUTH WALES
2015

Figure 3.1.1: Vegetation mapping of the study area (modified from DECCW, 2005)

Date: 16 July 2012

Drawn by: RS/JMS/ANP

File: 13194

Checked by: JC

Location: P:\15000s\15039\Mapping\Variation 1\Variation 1 Figures\13194_S2_F3-1_Veg_StriplIndex_160712.mxd

Acknowledgements:
Vegetation mapping from DECCW
Aerial imagery provided by ARUP
This product incorporates Data which is
copyright to the Commonwealth of Australia (c.2003)



Scale: 1:4,000 at A3
Map Projection: Transverse Mercator
Horizontal Datum: Geocentric Datum of Australia 1994
Grid: Map Grid of Australia, Zone 56

Ü

Figure 3.1



BIOSIS Research Pty. Ltd.
18-20 Mandible Street
Alexandria
NEW SOUTH WALES
2015

Figure 3.1.2: Vegetation mapping of the study area (modified from DECCW, 2005)

Date: 16 July 2012

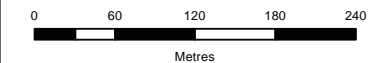
Drawn by: RS/JMS/ANP

File: 13194

Checked by: JC

Location: P:\15000s\15039\Mapping\Variation 1\Variation 1 Figures\13194_S2_F3-1_Veg_StripIndex_160712.mxd

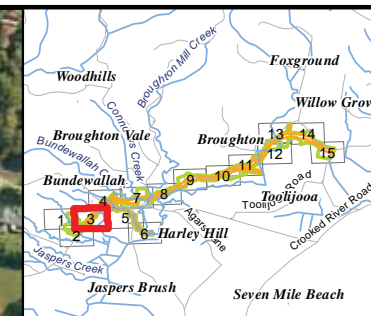
Acknowledgements:
Vegetation mapping from DECCW
Aerial imagery provided by ARUP
This product incorporates Data which is
copyright to the Commonwealth of Australia (c.2003)



Scale: 1:4,000 at A3
Map Projection: Transverse Mercator
Horizontal Datum: Geocentric Datum of Australia 1994
Grid: Map Grid of Australia, Zone 56



Figure 3.1



Legend

Vegetation communities

- Budderoo Temperate Rainforest
- Budderoo-Morton Plateau Forest
- Closed Grassland
- Closed Grassland/Sedgeland
- Coastal Fore-dune Scrub
- Coastal Freshwater Lagoon
- Coastal Sand Forest
- Coastal Sand Swamp Forest
- Coastal Warm Temperate Rainforest
- Constructed Wetland
- Currambene-Batemans Lowlands Forest
- Disturbed Riparian Open Woodland
- Escarpment Foothills Wet Forest
- Estuarine Creekflat Scrub
- Estuarine Mangrove Forest
- Floodplain Swamp Forest
- Illawarra Gully Wet Forest
- Illawarra Lowland Swamp Woodland
- Intermediate Temperate Rainforest
- Riverbank Forest
- South Coast Grassy Woodland
- Subtropical Complex Rainforest
- Subtropical Dry Rainforest
- Warm Temperate Layered Forest
- Yarrawarra Temperate Rainforest

Subject Site - Temporary Creek Crossings

Subject Site - Footprint

Ancillary Sites

Subject Site - Compound

Subject Site - Stockpile

Study Area



Biosis Research Pty. Ltd.
18-20 Mandible Street
Alexandria
NEW SOUTH WALES
2015

Figure 3.1.3: Vegetation mapping of the study area (modified from DECCW, 2005)

Date: 16 July 2012

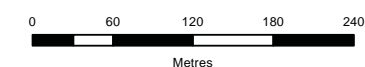
Drawn by: RS/JMS/ANP

File: 13194

Checked by: JC

Location: P:\15000s\15039\Mapping\Variation 1\Variation 1 Figures\13194_S2_F3-1_Veg_StriplIndex_160712.mxd

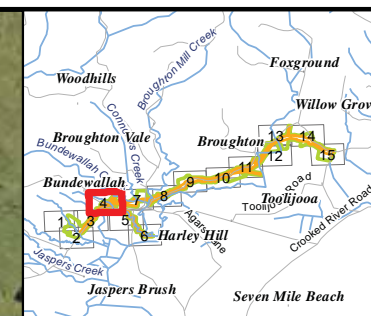
Acknowledgements:
Vegetation mapping from DECCW
Aerial imagery provided by ARUP
This product incorporates Data which is
copyright to the Commonwealth of Australia (c.2003)



Scale: 1:4,000 at A3
Map Projection: Transverse Mercator
Horizontal Datum: Geocentric Datum of Australia 1994
Grid: Map Grid of Australia, Zone 56

Ü

Figure 3.1



- Legend**
- Vegetation communities**
- Budderoo Temperate Rainforest
 - Budderoo-Morton Plateau Forest
 - Closed Grassland
 - Closed Grassland/Sedgeland
 - Coastal Fore-dune Scrub
 - Coastal Freshwater Lagoon
 - Coastal Sand Forest
 - Coastal Sand Swamp Forest
 - Coastal Warm Temperate Rainforest
 - Constructed Wetland
 - Currambene-Batemans Lowlands Forest
 - Disturbed Riparian Open Woodland
 - Escarpment Foothills Wet Forest
 - Estuarine Creekflat Scrub
 - Estuarine Mangrove Forest
 - Floodplain Swamp Forest
 - Illawarra Gully Wet Forest
 - Illawarra Lowland Swamp Woodland
 - Intermediate Temperate Rainforest
 - Riverbank Forest
 - South Coast Grassy Woodland
 - Subtropical Complex Rainforest
 - Subtropical Dry Rainforest
 - Warm Temperate Layered Forest
 - Yarrawarra Temperate Rainforest
- Ancillary Sites**
- Subject Site - Temporary Creek Crossings
 - Subject Site - Footprint
 - Subject Site - Compound
 - Subject Site - Stockpile
 - Study Area



Biosis Research Pty. Ltd.
18-20 Mandible Street
Alexandria
NEW SOUTH WALES
2015

Figure 3.1.4: Vegetation mapping of the study area (modified from DECCW, 2005)

Date: 16 July 2012	Drawn by: RS/JMS/ANP
File: 13194	Checked by: JC
Location: P:\15000s\15039\Mapping\Variation 1\Variation 1 Figures\13194_S2_F3-1_Veg_StripIndex_160712.mxd	

Acknowledgements:
Vegetation mapping from DECCW
Aerial imagery provided by ARUP
This product incorporates Data which is
copyright to the Commonwealth of Australia (c.2003)



Scale: 1:4,000 at A3
Map Projection: Transverse Mercator
Horizontal Datum: Geocentric Datum of Australia 1994
Grid: Map Grid of Australia, Zone 56



Figure 3.1



Biosis Research Pty. Ltd.
18-20 Mandible Street
Alexandria
NEW SOUTH WALES
2015

Figure 3.1.5: Vegetation mapping of the study area (modified from DECCW, 2005)

Date: 16 July 2012

Drawn by: RS/JMS/ANP

File: 13194

Checked by: JC

Location: P:\15000s\15039\Mapping\Variation 1\Variation 1 Figures\13194_S2_F3-1_Veg_StriplIndex_160712.mxd

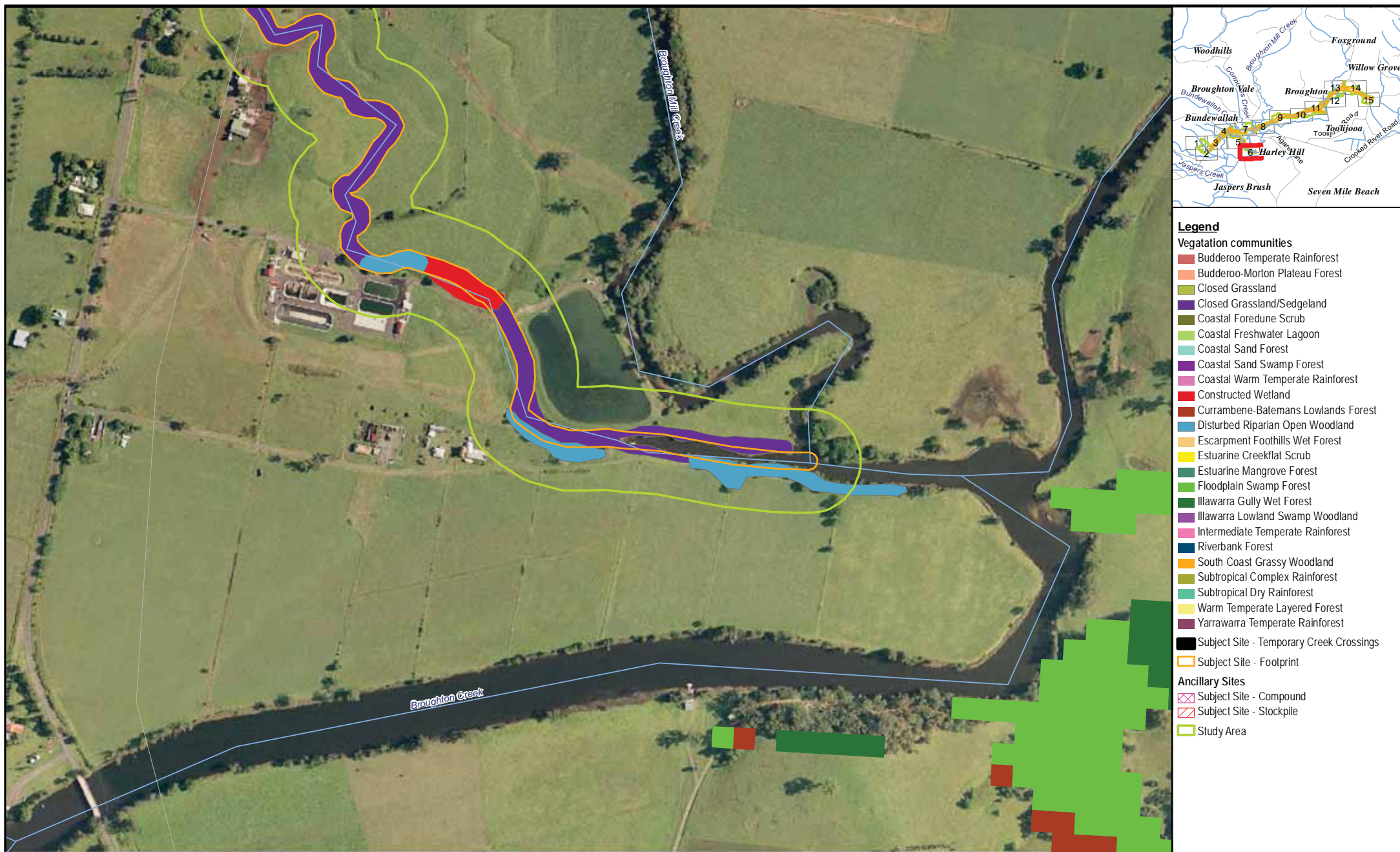
Acknowledgements:
Vegetation mapping from DECCW
Aerial imagery provided by ARUP
This product incorporates Data which is
copyright to the Commonwealth of Australia (c.2003)



Scale: 1:4,000 at A3
Map Projection: Transverse Mercator
Horizontal Datum: Geocentric Datum of Australia 1994
Grid: Map Grid of Australia, Zone 56



Figure 3.1



Biosis Research Pty. Ltd.
18-20 Mandible Street
Alexandria
NEW SOUTH WALES
2015

Figure 3.1.6: Vegetation mapping of the study area (modified from DECCW, 2005)

Date: 16 July 2012

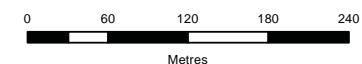
Drawn by: RS/JMS/ANP

File: 13194

Checked by: JC

Location: P:\15000s\15039\Mapping\Variation 1\Variation 1 Figures\13194_S2_F3-1_Veg_StriplIndex_160712.mxd

Acknowledgements:
Vegetation mapping from DECCW
Aerial imagery provided by ARUP
This product incorporates Data which is
copyright to the Commonwealth of Australia (c.2003)



Scale: 1:4,000 at A3
Map Projection: Transverse Mercator
Horizontal Datum: Geocentric Datum of Australia 1994
Grid: Map Grid of Australia, Zone 56

Ü

Figure 3.1



Biosis Research Pty. Ltd.
 18-20 Mandible Street
 Alexandria
 NEW SOUTH WALES
 2015

Figure 3.1.7: Vegetation mapping of the study area (modified from DECCW, 2005)

Date: 16 July 2012	Drawn by: RS/JMS/ANP
File: 13194	Checked by: JC
Location: P:\15000s\15039\Mapping\Variation 1\Variation 1 Figures\13194_S2_F3-1_Veg_StripIndex_160712.mxd	

Acknowledgements:
 Vegetation mapping from DECCW
 Aerial imagery provided by ARUP
 This product incorporates Data which is
 copyright to the Commonwealth of Australia (c.2003)

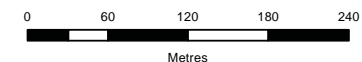


Figure 3.1



Biosis Research Pty. Ltd.
18-20 Mandible Street
Alexandria
NEW SOUTH WALES
2015

Figure 3.1.8: Vegetation mapping of the study area (modified from DECCW, 2005)

Date: 16 July 2012

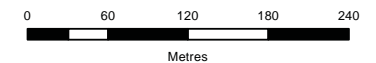
Drawn by: RS/JMS/ANP

File: 13194

Checked by: JC

Location: P:\15000s\15039\Mapping\Variation 1\Variation 1 Figures\13194_S2_F3-1_Veg_StripIndex_160712.mxd

Acknowledgements:
Vegetation mapping from DECCW
Aerial imagery provided by ARUP
This product incorporates Data which is
copyright to the Commonwealth of Australia (c.2003)



Scale: 1:4,000 at A3
Map Projection: Transverse Mercator
Horizontal Datum: Geocentric Datum of Australia 1994
Grid: Map Grid of Australia, Zone 56

Ü

Figure 3.1



Biosis Research Pty. Ltd.
18-20 Mandible Street
Alexandria
NEW SOUTH WALES
2015

Figure 3.1.9: Vegetation mapping of the study area (modified from DECCW, 2005)

Date: 16 July 2012

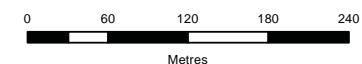
Drawn by: RS/JMS/ANP

File: 13194

Checked by: JC

Location: P:\15000s\15039\Mapping\Variation 1\Variation 1 Figures\13194_S2_F3-1_Veg_StriplIndex_160712.mxd

Acknowledgements:
Vegetation mapping from DECCW
Aerial imagery provided by ARUP
This product incorporates Data which is
copyright to the Commonwealth of Australia (c.2003)



Scale: 1:4,000 at A3
Map Projection: Transverse Mercator
Horizontal Datum: Geocentric Datum of Australia 1994
Grid: Map Grid of Australia, Zone 56

Ü

Figure 3.1



Biosis Research Pty. Ltd.
18-20 Mandible Street
Alexandria
NEW SOUTH WALES
2015

Figure 3.1.10: Vegetation mapping of the study area (modified from DECCW, 2005)

Date: 16 July 2012

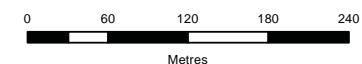
Drawn by: RS/JMS/ANP

File: 13194

Checked by: JC

Location: P:\15000s\15039\Mapping\Variation 1\Variation 1 Figures\13194_S2_F3-1_Veg_StripIndex_160712.mxd

Acknowledgements:
Vegetation mapping from DECCW
Aerial imagery provided by ARUP
This product incorporates Data which is
copyright to the Commonwealth of Australia (c.2003)



Scale: 1:4,000 at A3
Map Projection: Transverse Mercator
Horizontal Datum: Geocentric Datum of Australia 1994
Grid: Map Grid of Australia, Zone 56

Ü

Figure 3.1



Biosis Research Pty. Ltd.
18-20 Mandible Street
Alexandria
NEW SOUTH WALES
2015

Figure 3.1.11: Vegetation mapping of the study area (modified from DECCW, 2005)

Date: 16 July 2012

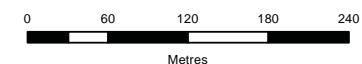
Drawn by: RS/JMS/ANP

File: 13194

Checked by: JC

Location: P:\15000s\15039\Mapping\Variation 1\Variation 1 Figures\13194_S2_F3-1_Veg_StripIndex_160712.mxd

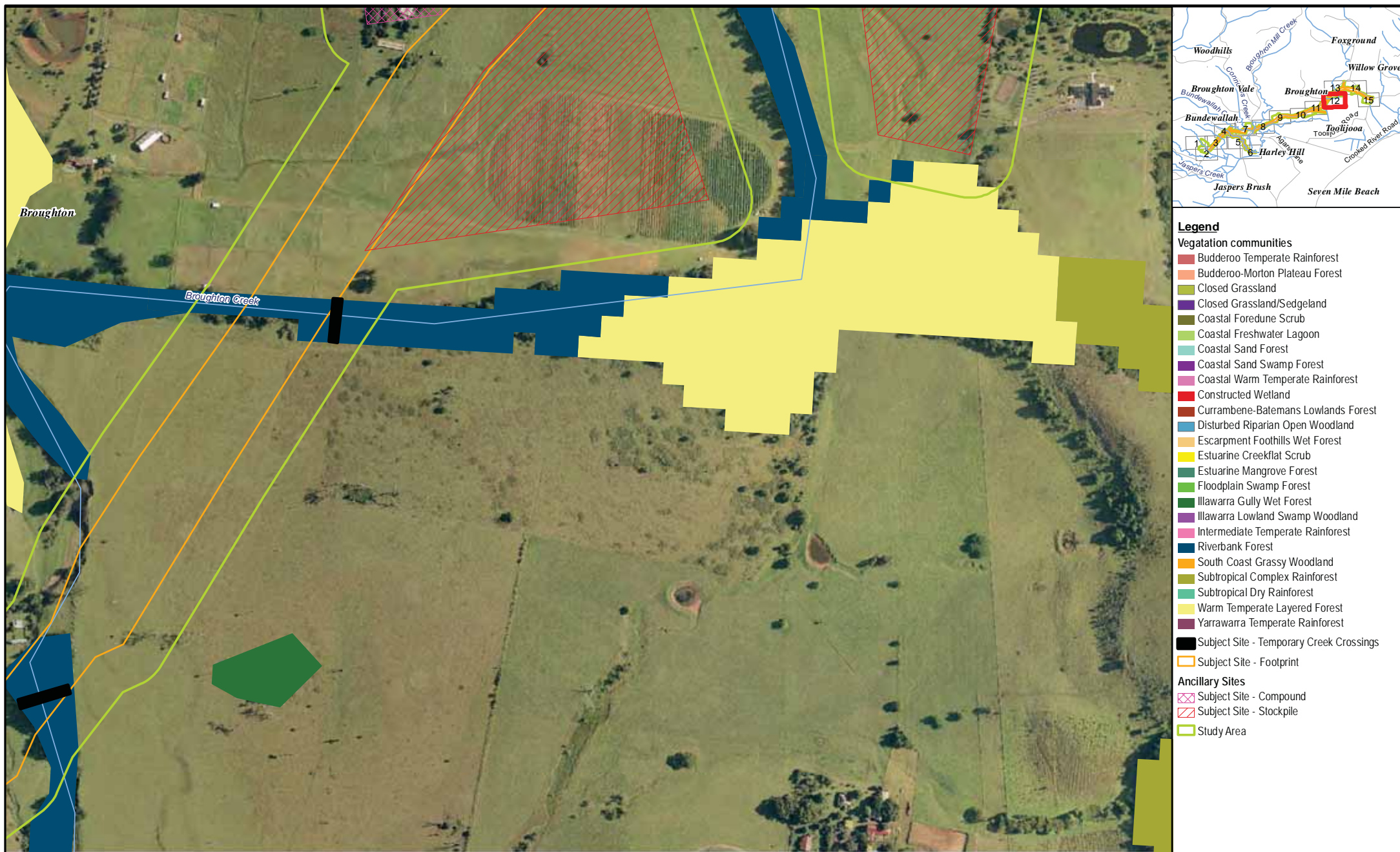
Acknowledgements:
Vegetation mapping from DECCW
Aerial imagery provided by ARUP
This product incorporates Data which is
copyright to the Commonwealth of Australia (c.2003)



Scale: 1:4,000 at A3
Map Projection: Transverse Mercator
Horizontal Datum: Geocentric Datum of Australia 1994
Grid: Map Grid of Australia, Zone 56

Ü

Figure 3.1



Biosis Research Pty. Ltd.
18-20 Mandible Street
Alexandria
NEW SOUTH WALES
2015

Figure 3.1.12: Vegetation mapping of the study area (modified from DECCW, 2005)

Date: 16 July 2012

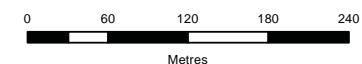
Drawn by: RS/JMS/ANP

File: 13194

Checked by: JC

Location: P:\15000s\15039\Mapping\Variation 1\Variation 1 Figures\13194_S2_F3-1_Veg_StripIndex_160712.mxd

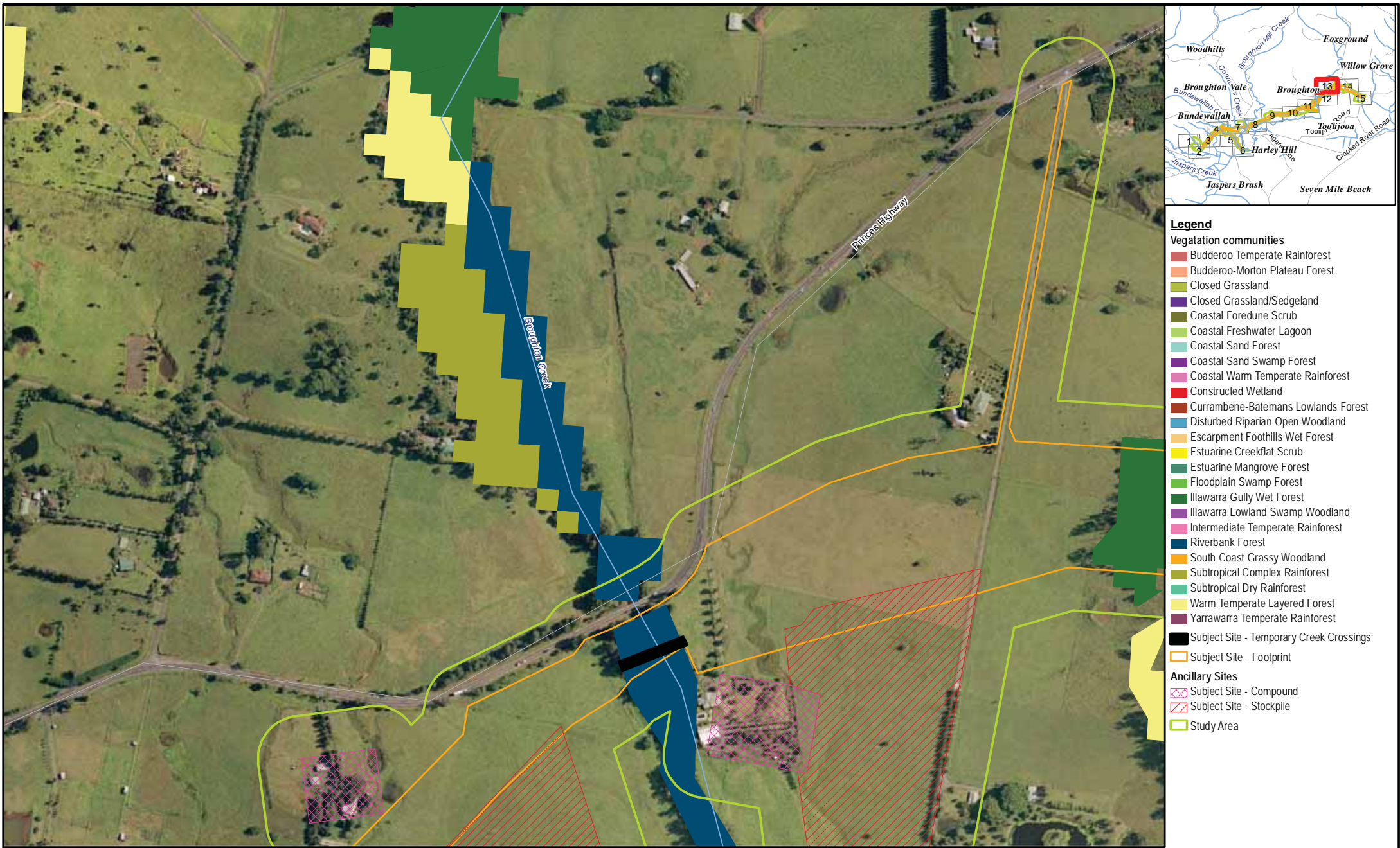
Acknowledgements:
Vegetation mapping from DECCW
Aerial imagery provided by ARUP
This product incorporates Data which is
copyright to the Commonwealth of Australia (c.2003)



Scale: 1:4,000 at A3
Map Projection: Transverse Mercator
Horizontal Datum: Geocentric Datum of Australia 1994
Grid: Map Grid of Australia, Zone 56



Figure 3.1



Biosis Research Pty. Ltd.
18-20 Mandible Street
Alexandria
NEW SOUTH WALES
2015

Figure 3.1.13: Vegetation mapping of the study area (modified from DECCW, 2005)

Date: 16 July 2012

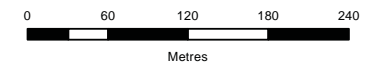
Drawn by: RS/JMS/ANP

File: 13194

Checked by: JC

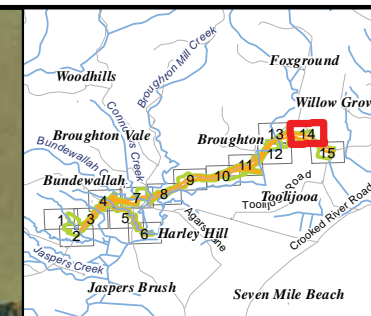
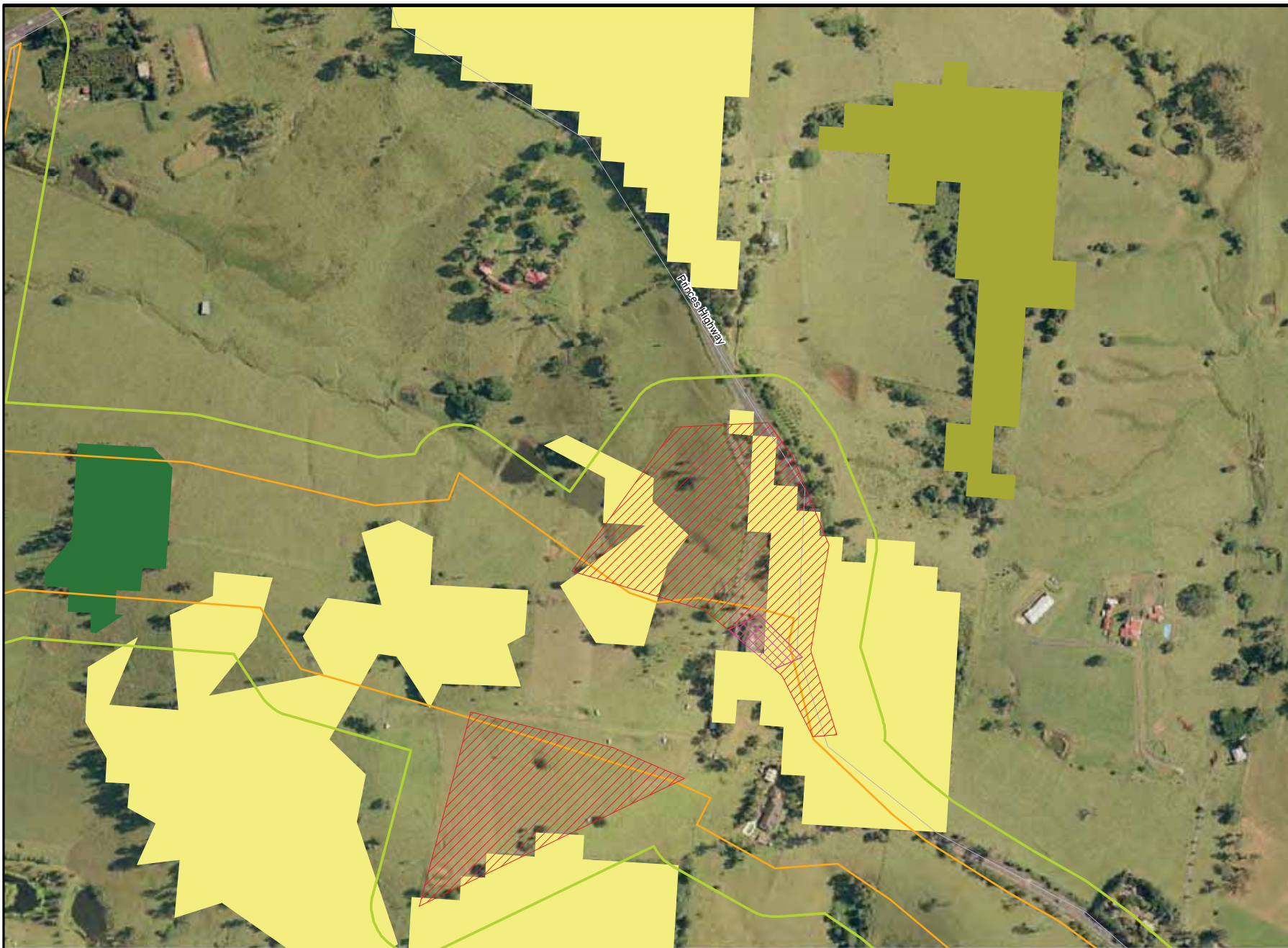
Location: P:\15000s\15039\Mapping\Variation 1\Variation 1 Figures\13194_S2_F3-1_Veg_StriplIndex_160712.mxd

Acknowledgements:
Vegetation mapping from DECCW
Aerial imagery provided by ARUP
This product incorporates Data which is
copyright to the Commonwealth of Australia (c.2003)



Scale: 1:4,000 at A3
Map Projection: Transverse Mercator
Horizontal Datum: Geocentric Datum of Australia 1994
Grid: Map Grid of Australia, Zone 56

Figure 3.1



- Legend**
- Vegetation communities**
- Budderoo Temperate Rainforest
 - Budderoo-Morton Plateau Forest
 - Closed Grassland
 - Closed Grassland/Sedgeland
 - Coastal Fore-dune Scrub
 - Coastal Freshwater Lagoon
 - Coastal Sand Forest
 - Coastal Sand Swamp Forest
 - Coastal Warm Temperate Rainforest
 - Constructed Wetland
 - Currambene-Batemans Lowlands Forest
 - Disturbed Riparian Open Woodland
 - Escarpment Foothills Wet Forest
 - Estuarine Creekflat Scrub
 - Estuarine Mangrove Forest
 - Floodplain Swamp Forest
 - Illawarra Gully Wet Forest
 - Illawarra Lowland Swamp Woodland
 - Intermediate Temperate Rainforest
 - Riverbank Forest
 - South Coast Grassy Woodland
 - Subtropical Complex Rainforest
 - Subtropical Dry Rainforest
 - Warm Temperate Layered Forest
 - Yarrawarra Temperate Rainforest
- Subject Site - Temporary Creek Crossings**
- Subject Site - Footprint**
- Ancillary Sites**
- Subject Site - Compound
 - Subject Site - Stockpile
 - Study Area



BIOSIS Research Pty. Ltd.
18-20 Mandible Street
Alexandria
NEW SOUTH WALES
2015

Figure 3.1.14: Vegetation mapping of the study area (modified from DECCW, 2005)

Date: 16 July 2012

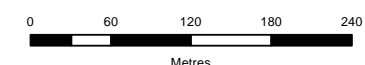
Drawn by: RS/JMS/ANP

File: 13194

Checked by: JC

Location: P:\15000s\15039\Mapping\Variation 1\Variation 1 Figures\13194_S2_F3-1_Veg_StripIndex_160712.mxd

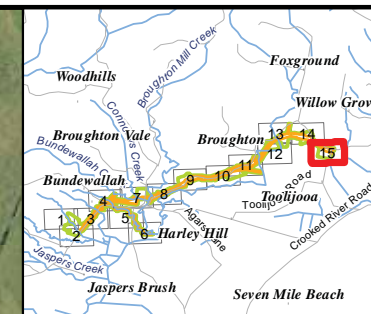
Acknowledgements:
Vegetation mapping from DECCW
Aerial imagery provided by ARUP
This product incorporates Data which is
copyright to the Commonwealth of Australia (c.2003)



Scale: 1:4,000 at A3
Map Projection: Transverse Mercator
Horizontal Datum: Geocentric Datum of Australia 1994
Grid: Map Grid of Australia, Zone 56

Ü

Figure 3.1



Legend

Vegetation communities

- Budderoo Temperate Rainforest
- Budderoo-Morton Plateau Forest
- Closed Grassland
- Closed Grassland/Sedgeland
- Coastal Fore-dune Scrub
- Coastal Freshwater Lagoon
- Coastal Sand Forest
- Coastal Sand Swamp Forest
- Coastal Warm Temperate Rainforest
- Constructed Wetland
- Currumbene-Batemans Lowlands Forest
- Disturbed Riparian Open Woodland
- Escarpment Foothills Wet Forest
- Estuarine Creekflat Scrub
- Estuarine Mangrove Forest
- Floodplain Swamp Forest
- Illawarra Gully Wet Forest
- Illawarra Lowland Swamp Woodland
- Intermediate Temperate Rainforest
- Riverbank Forest
- South Coast Grassy Woodland
- Subtropical Complex Rainforest
- Subtropical Dry Rainforest
- Warm Temperate Layered Forest
- Yarrowarra Temperate Rainforest

- Subject Site - Temporary Creek Crossings
- Subject Site - Footprint

Ancillary Sites

- Subject Site - Compound
- Subject Site - Stockpile
- Study Area

Figure 3.1.15: Vegetation mapping of the study area (modified from DECCW, 2005)

Date: 16 July 2012

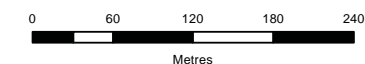
Drawn by: RS/JMS/ANP

File: 13194

Checked by: JC

Location: P:\15000s\15039\Mapping\Variation 1\Variation 1 Figures\13194_S2_F3-1_Veg_StripIndex_160712.mxd

Acknowledgements:
Vegetation mapping from DECCW
Aerial imagery provided by ARUP
This product incorporates Data which is
copyright to the Commonwealth of Australia (c.2003)



Scale: 1:4,000 at A3
Map Projection: Transverse Mercator
Horizontal Datum: Geocentric Datum of Australia 1994
Grid: Map Grid of Australia, Zone 56

Figure 3.1



Biosis Research Pty. Ltd.
18-20 Mandible Street
Alexandria
NEW SOUTH WALES
2015