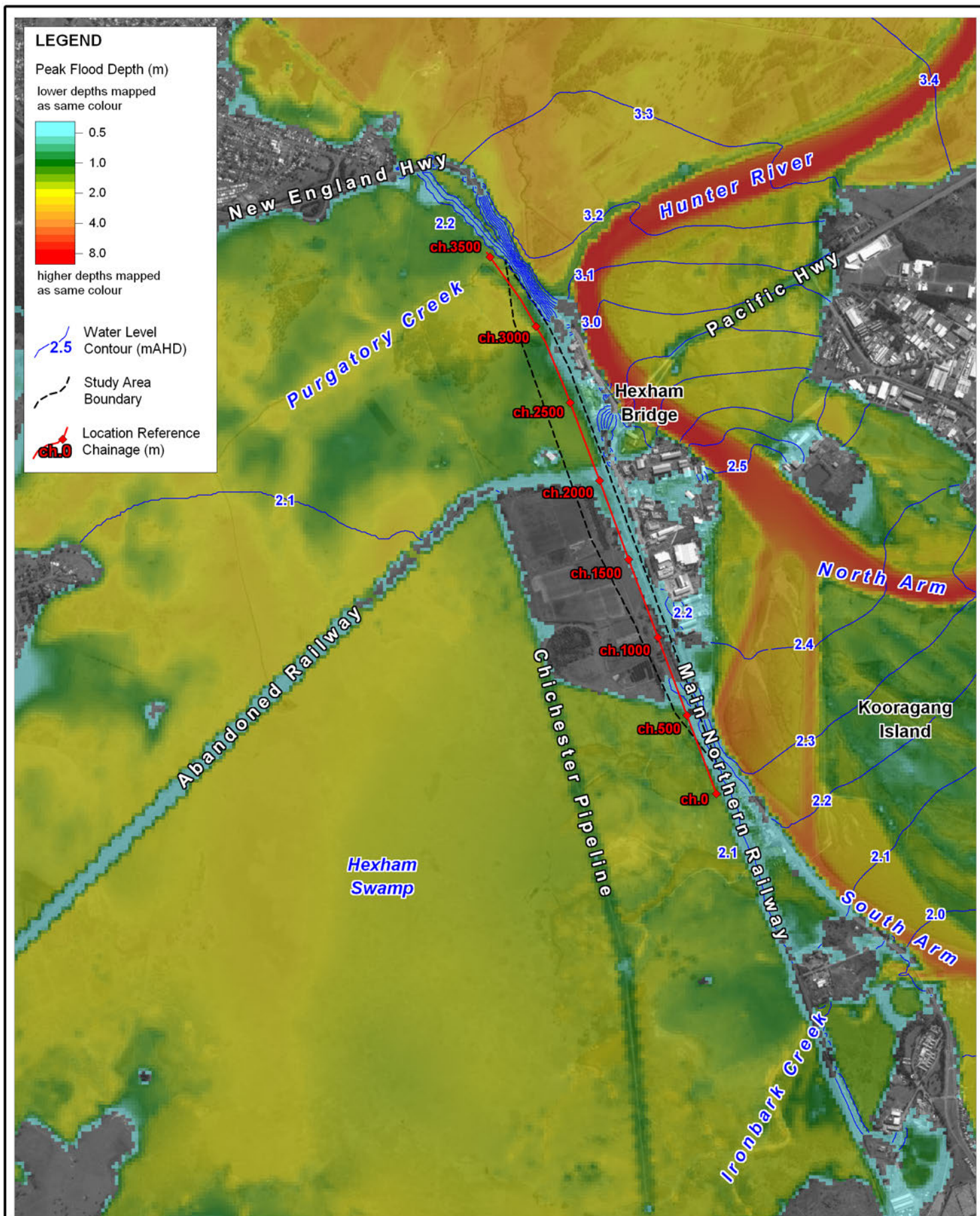


## **APPENDIX A: FLOOD MAPS FOR EXISTING CONDITIONS**



Title:  
**2% AEP Peak Flood Depths and Levels - Existing Conditions**

Figure:  
**A-1**

Rev:  
**A**

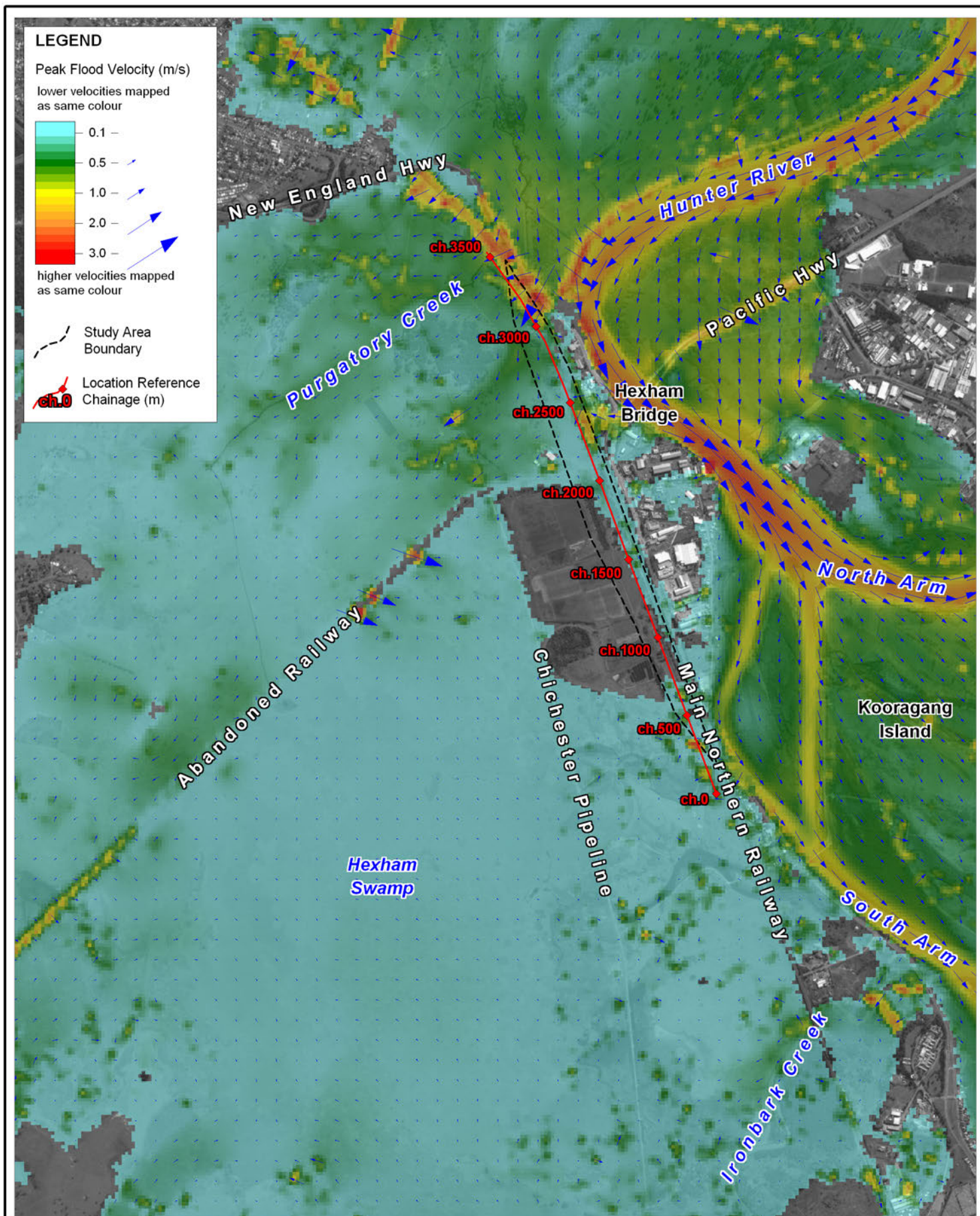
BMT WBM endeavours to ensure that the information provided in this map is correct at the time of publication. BMT WBM does not warrant, guarantee or make representations regarding the currency and accuracy of information contained in this map.



0 0.5 1km  
Approx. Scale

 **BMT WBM**  
www.bmtwbm.com.au





Title:  
**2% AEP Peak Flood Velocities - Existing Conditions**

Figure:  
**A-2**

Rev:  
**A**

BMT WBM endeavours to ensure that the information provided in this map is correct at the time of publication. BMT WBM does not warrant, guarantee or make representations regarding the currency and accuracy of information contained in this map.

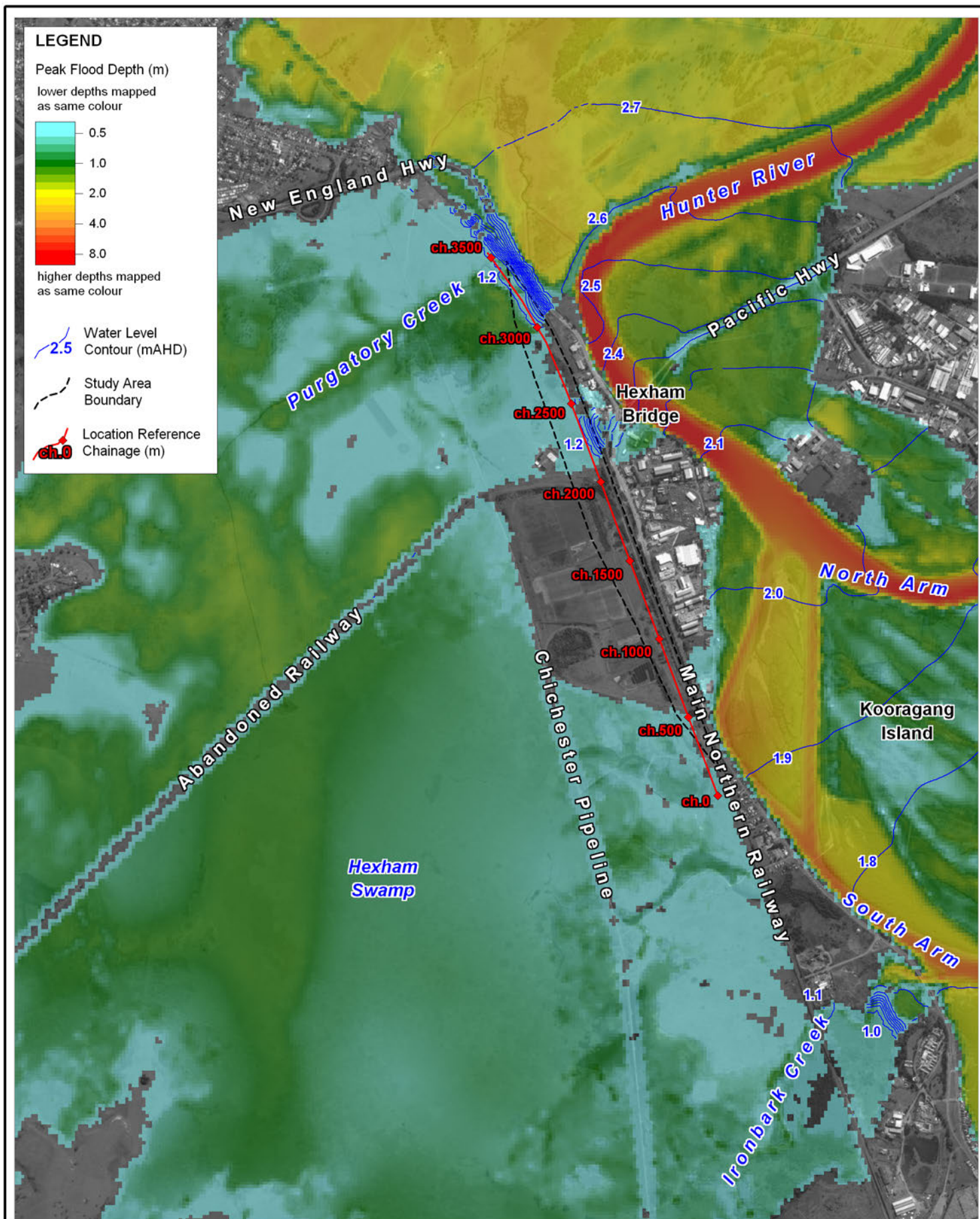


0 0.5 1km  
Approx. Scale

 **BMT WBM**  
www.bmtwbm.com.au

Filepath : K:\N2197\_Hexham\_Rail\_Development\MapInfo\Workspaces\DRG\_008\_120228\_2%AEP\_Velocities.WOR





Title:

**5% AEP Peak Flood Depths and Levels - Existing Conditions**

Figure:

**A-3**

Rev:

**A**

BMT WBM endeavours to ensure that the information provided in this map is correct at the time of publication. BMT WBM does not warrant, guarantee or make representations regarding the currency and accuracy of information contained in this map.

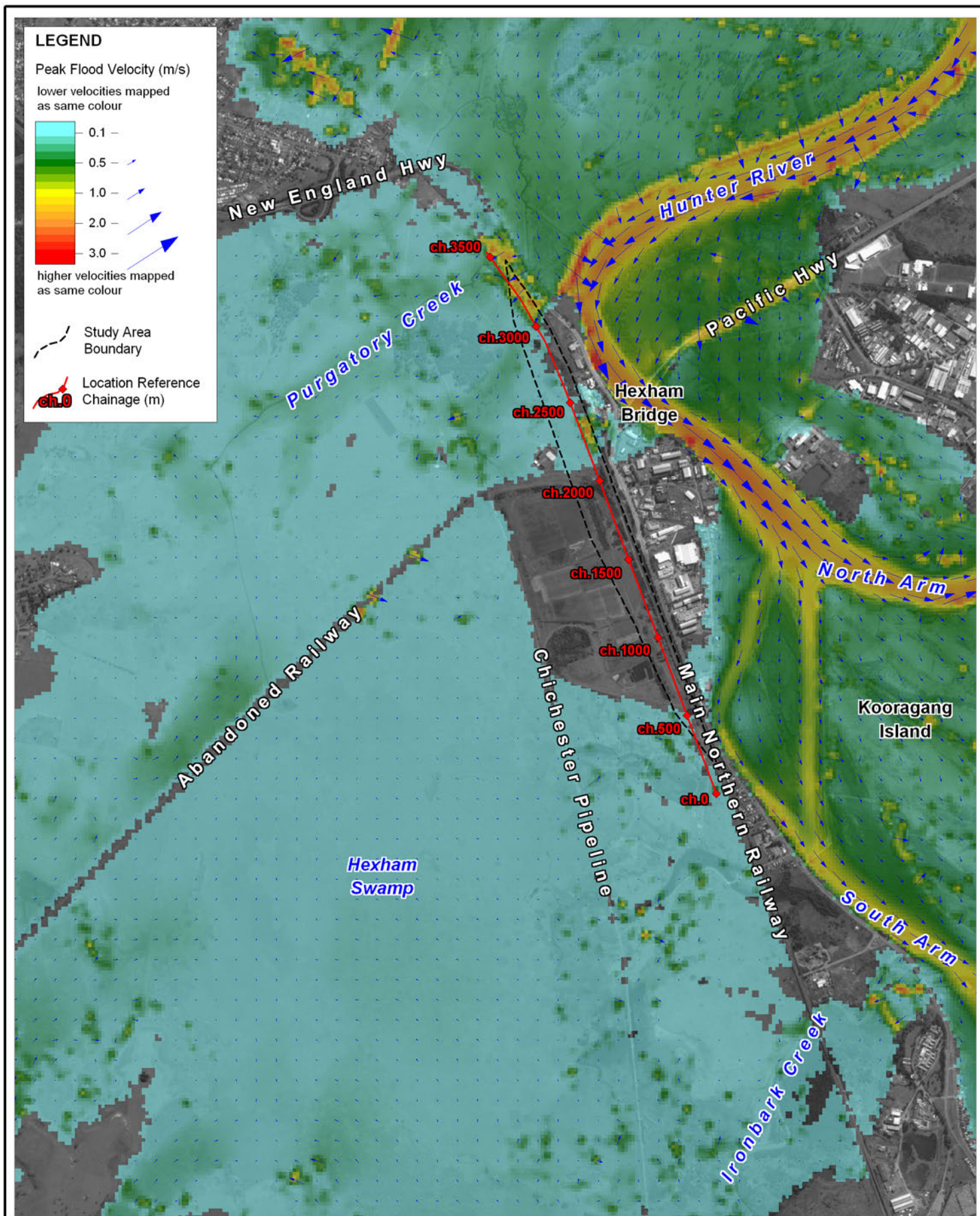


0 0.5 1km  
Approx. Scale

 **BMT WBM**  
www.bmtwbm.com.au

Filepath : K:\N2197\_Hexham\_Rail\_Development\MapInfo\Workspaces\DRG\_005\_120228\_5%AEP\_Depths.WOR





Title:  
**5% AEP Peak Flood Velocities - Existing Conditions**

Figure:  
**A-4**

Rev:  
**A**

BMT WBM endeavours to ensure that the information provided in this map is correct at the time of publication. BMT WBM does not warrant, guarantee or make representations regarding the currency and accuracy of information contained in this map.

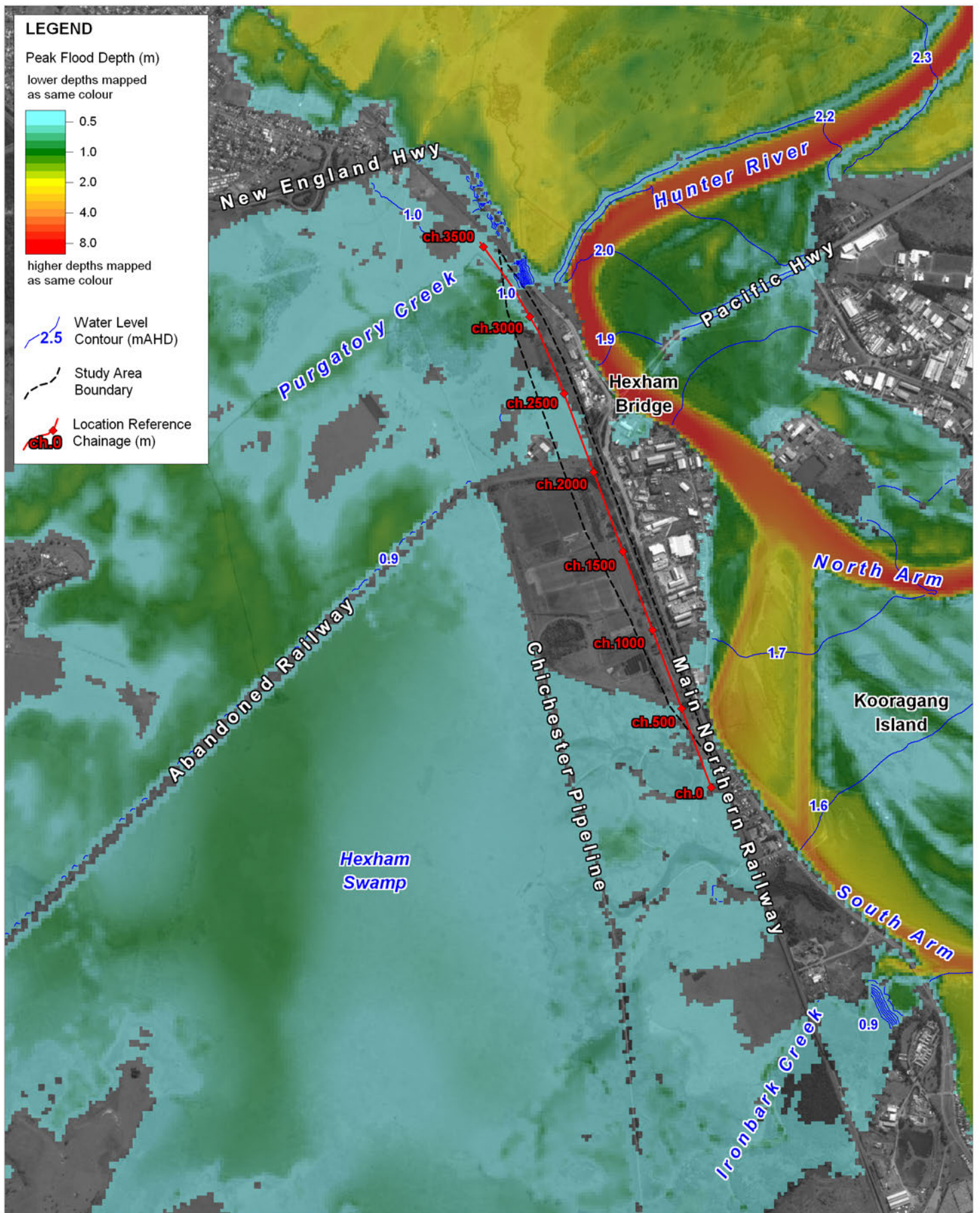


0 0.5 1km  
Approx. Scale

 **BMT WBM**  
www.bmtwbm.com.au

Filepath : K:\N2197\_Hexham\_Rail\_Development\MapInfo\Workspaces\DRG\_009\_120228\_5%AEP\_Velocities.WOR





Title:

**10% AEP Peak Flood Depths and Levels - Existing Conditions**

Figure:

**A-5**

Rev:

**A**

BMT WBM endeavours to ensure that the information provided in this map is correct at the time of publication. BMT WBM does not warrant, guarantee or make representations regarding the currency and accuracy of information contained in this map.



0 0.5 1km  
Approx. Scale

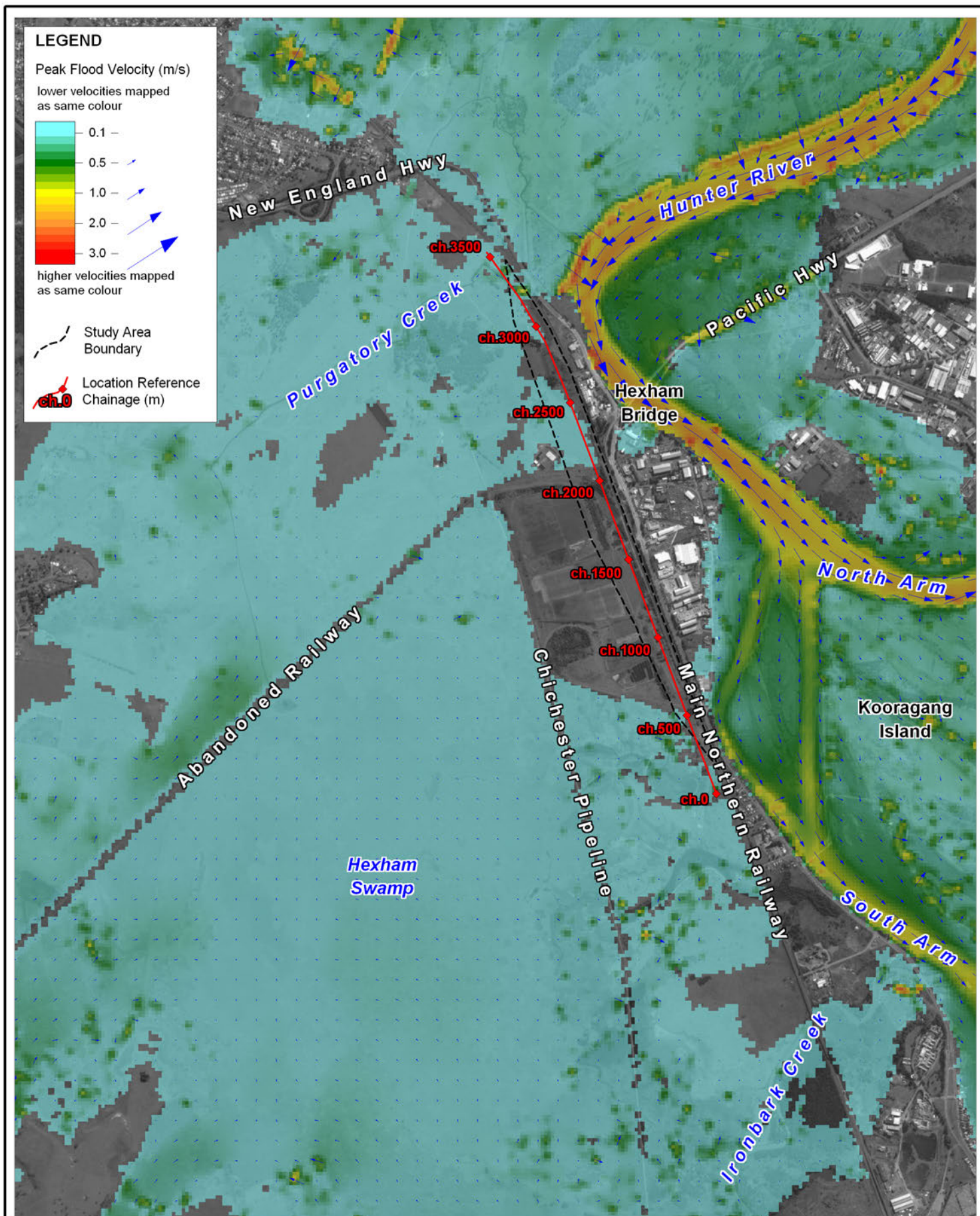


**BMT WBM**

[www.bmtwbm.com.au](http://www.bmtwbm.com.au)

Filepath : K:\N2197\_Hexham\_Rail\_Development\MapInfo\Workspaces\DRG\_006\_120228\_10%AEP\_Depths.WOR





Title:  
**10% AEP Peak Flood Velocities - Existing Conditions**

Figure:  
**A-6**

Rev:  
**A**

BMT WBM endeavours to ensure that the information provided in this map is correct at the time of publication. BMT WBM does not warrant, guarantee or make representations regarding the currency and accuracy of information contained in this map.

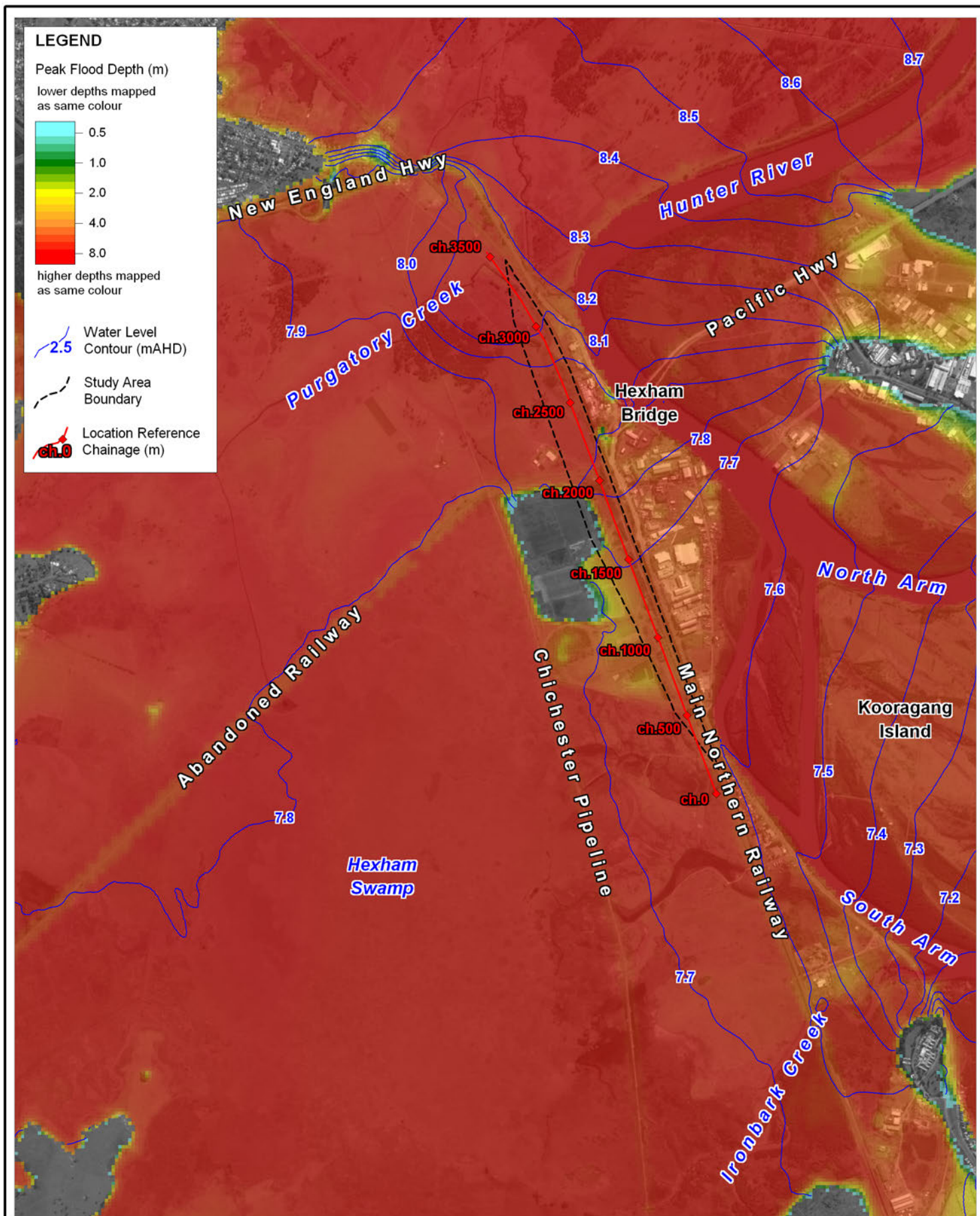


0 0.5 1km  
Approx. Scale

 **BMT WBM**  
www.bmtwbm.com.au

Filepath : K:\N2197\_Hexham\_Rail\_Development\MapInfo\Workspaces\DRG\_010\_120228\_10%AEP\_Velocities.WOR





Title:  
**PMF Peak Flood Depths and Levels - Existing Conditions**

Figure:  
**A-7**

Rev:  
**A**

BMT WBM endeavours to ensure that the information provided in this map is correct at the time of publication. BMT WBM does not warrant, guarantee or make representations regarding the currency and accuracy of information contained in this map.

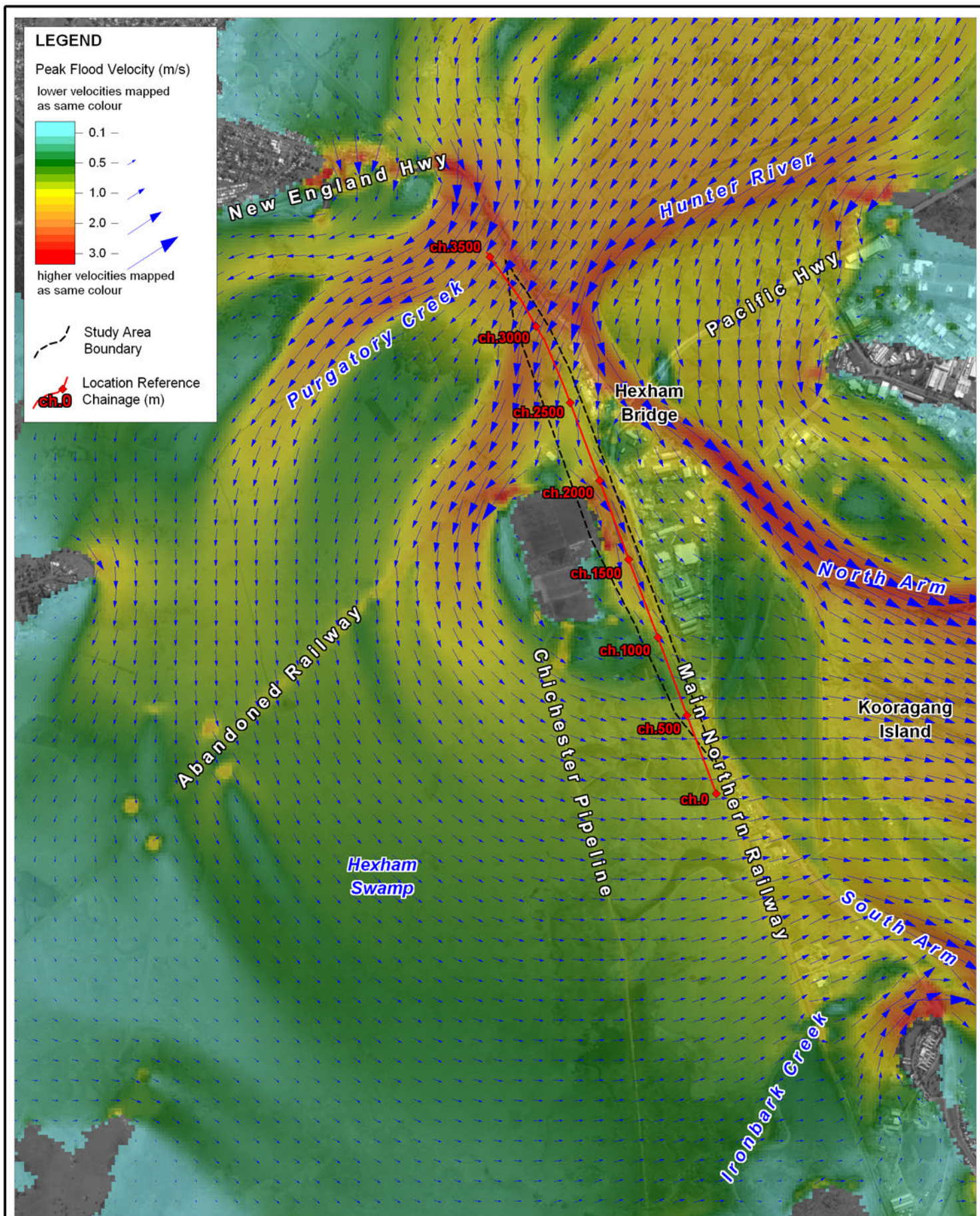


0 0.5 1km  
Approx. Scale

 **BMT WBM**  
www.bmtwbm.com.au

Filepath : K:\N2197\_Hexham\_Rail\_Development\MapInfo\Workspaces\DRG\_034\_120319\_PMF\_Depths.WOR





Title:

## PMF Peak Flood Velocities - Existing Conditions

Figure:

A-8

Rev:

A

BMT WBM endeavours to ensure that the information provided in this map is correct at the time of publication. BMT WBM does not warrant, guarantee or make representations regarding the currency and accuracy of information contained in this map.



0 0.5 1km  
Approx. Scale



**BMT WBM**

[www.bmtwbm.com.au](http://www.bmtwbm.com.au)

Filepath : K:\N2197\_Hexham\_Rail\_Development\MapInfo\Workspaces\DRG\_041\_120320\_PMF\_Velocities.WOR