

Note: Information on these drawings is based on specific sampling points and may not represent the conditions that may be encountered across the site at other than these locations. These drawings must be read in conjunction with the associated report including the limitations statement.

Previous Investigations			
Coffey (2012)			
Douglas Partners (2007/2008)			
ERM (2002)			
GHD-LongMac (2005)			

1:2,000 Paper Size A3

0 10 20 40 60 80

Metres

Map Projection: Transverse Mercator
Horizontal Datum: GDA 1994
Grid: GDA 1994 MGA Zone 56

LEGEND

Contamination Areas of Concern

TRH C10-C36 impact

TRH C10-C36 and PAH impact

Potential TRH C10-C36 and PAH impact

Additional Contamination Areas of Concern

Confirmed Asbestos Materials

Possible Asbestos Materials

Site Boundary

Project Footprint

SEPP14 Coastal Wetland

Structure Footprints

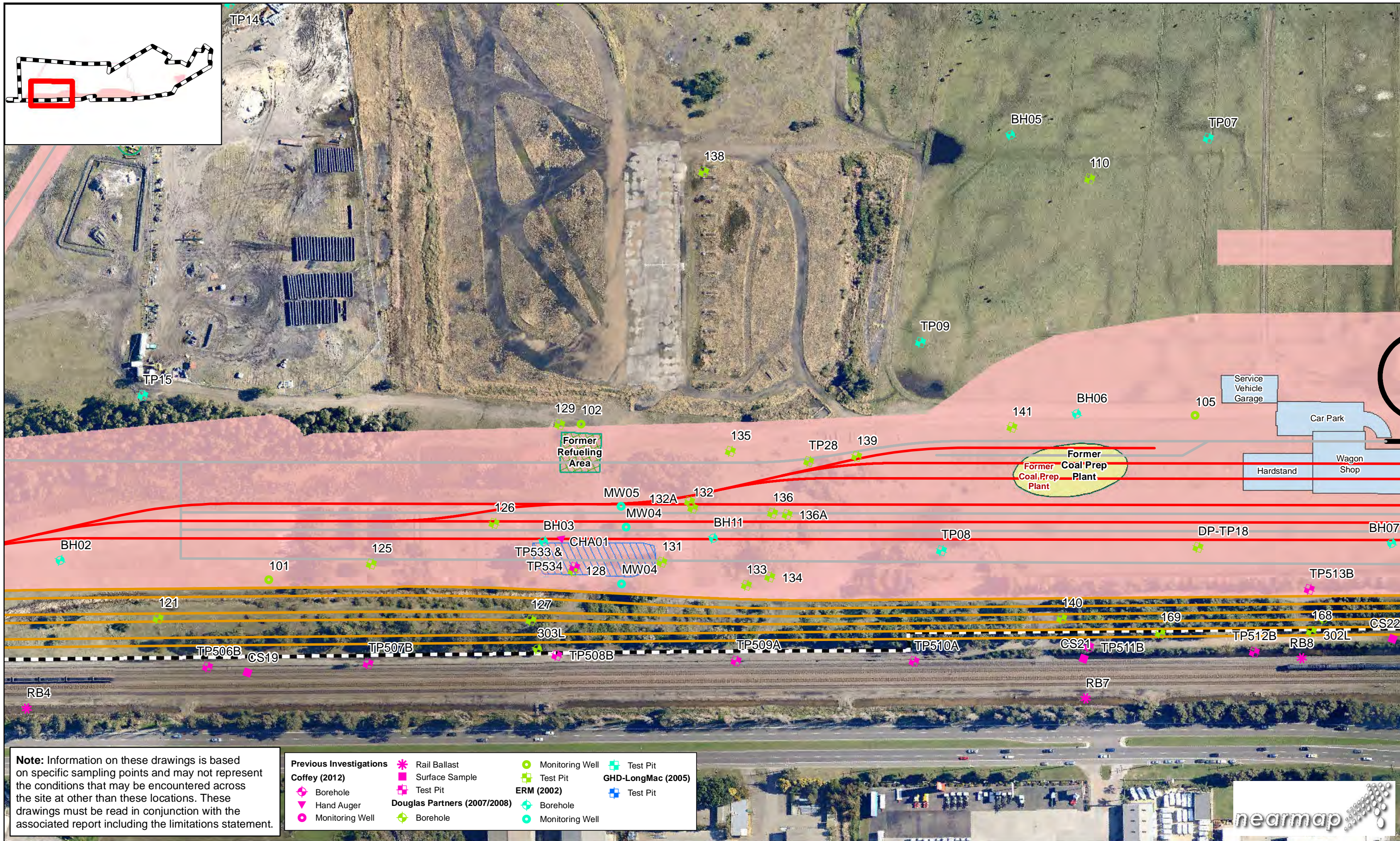
QR National Pty Ltd
NSW Long Term Train Support Facility

Contamination Assessment

2216395-06-FIG-D0001

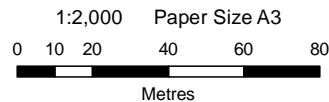
Job Number 22-16395
Revision 3
Date 25 Sep 2012

Page 1 of 12

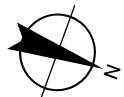


Note: Information on these drawings is based on specific sampling points and may not represent the conditions that may be encountered across the site at other than these locations. These drawings must be read in conjunction with the associated report including the limitations statement.

Previous Investigations			
Coffey (2012)		Rail Ballast	Monitoring Well
Borehole	Surface Sample	Test Pit	Test Pit
Hand Auger	Test Pit	ERM (2002)	
Monitoring Well	Douglas Partners (2007/2008)		Test Pit
	Borehole	Borehole	Monitoring Well



Map Projection: Transverse Mercator
Horizontal Datum: GDA 1994
Grid: GDA 1994 MGA Zone 56



LEGEND

Contamination Areas of Concern

- TRH C10-C36 impact
- TRH C10-C36 and PAH impact
- Potential TRH C10-C36 and PAH impact

Additional Contamination Areas of Concern

- Confirmed Asbestos Materials
- Possible Asbestos Materials

Site Boundary

Project Footprint

SEPP14 Coastal Wetland

Structure Footprints



CLIENTS | PEOPLE | PERFORMANCE

QR National Pty Ltd
NSW Long Term Train Support Facility

Contamination Assessment

2216395-06-FIG-D0001

Job Number 22-16395
Revision 3
Date 25 Sep 2012

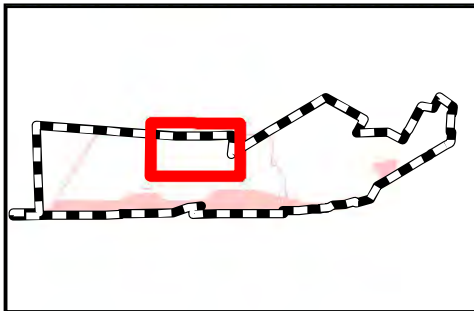
Page 3 of 12

G:\2216395\GIS\Maps\Deliverables\Internal\General\2216395-06-FIG-D0001(3).mxd

© 2012. Whilst every care has been taken to prepare this map, GHD, LPMA, Nearmap and Engenicom make no representations or warranties about its accuracy, reliability, completeness or suitability for any particular purpose and cannot accept liability and responsibility of any kind (whether in contract, tort or otherwise) for any expenses, losses, damages and/or costs (including indirect or consequential damage) which are or may be incurred by any party as a result of the map being inaccurate, incomplete or unsuitable in any way and for any reason.

Data source: LPMA: DCTB - 2007; Nearmap: Aerials - 2012; Engenicom: Design Data - 2012. Created by: mabamier

Level 3, GHD Tower, 24 Honeysuckle Drive, Newcastle NSW 2300 T 61 2 4979 9999 F 61 2 4979 9988 E ntlmail@ghd.com W www.ghd.com.au



Note: Information on these drawings is based on specific sampling points and may not represent the conditions that may be encountered across the site at other than these locations. These drawings must be read in conjunction with the associated report including the limitations statement.

Previous Investigations

Coffey (2012)

- Borehole
- Hand Auger
- Monitoring Well

Douglas Partners (2007/2008)

- Borehole

ERM (2002)

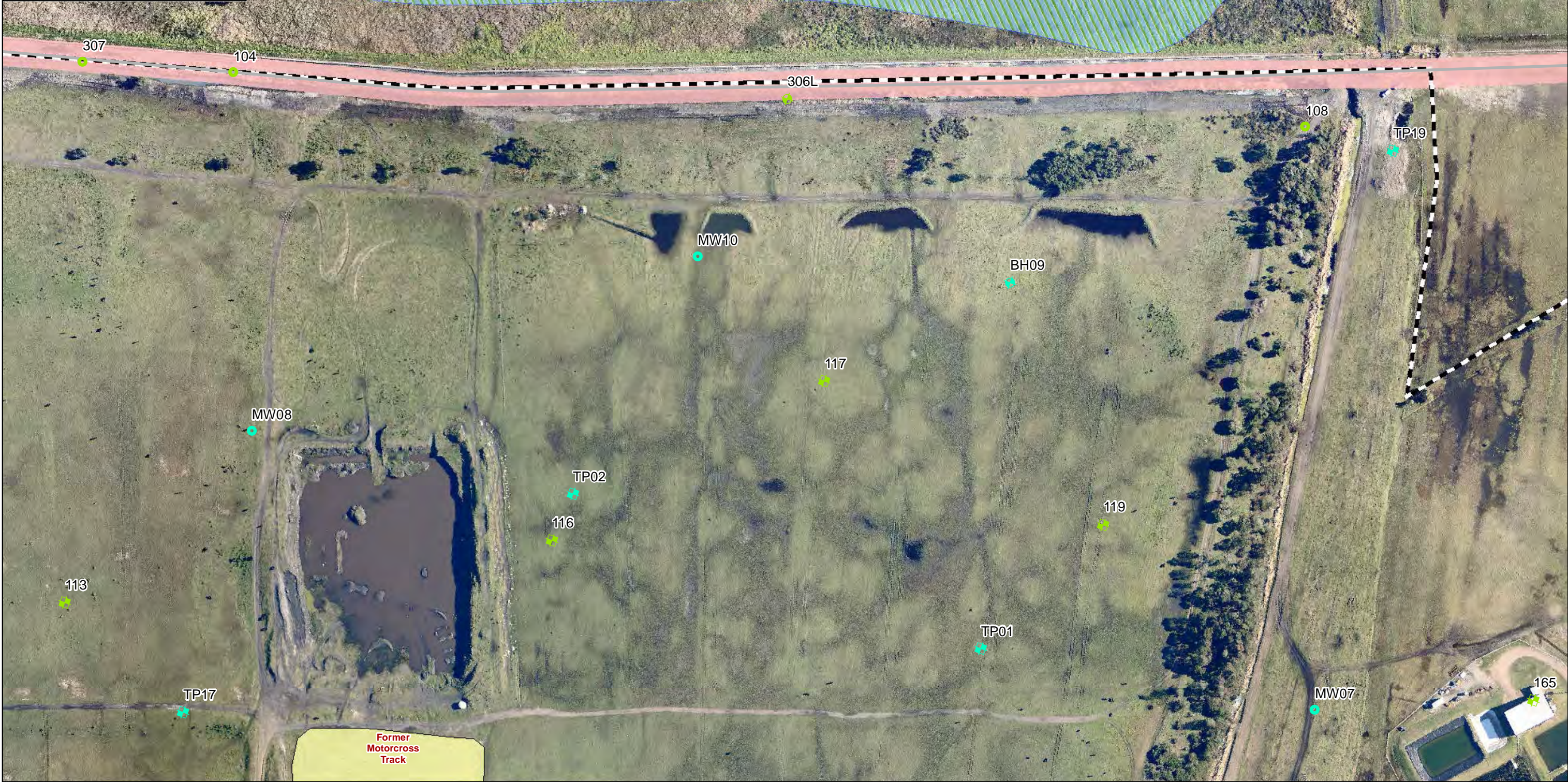
- Borehole
- Monitoring Well

GHD-LongMac (2005)

- Test Pit
- Test Pit

Legend

- Rail Ballast
- Surface Sample
- Test Pit



1:2,000 Paper Size A3

0 10 20 40 60 80 Metres

Map Projection: Transverse Mercator
Horizontal Datum: GDA 1994
Grid: GDA 1994 MGA Zone 56

LEGEND

Contamination Areas of Concern

- TRH C10-C36 impact
- TRH C10-C36 and PAH impact
- Potential TRH C10-C36 and PAH impact

Additional Contamination Areas of Concern

- Confirmed Asbestos Materials
- Possible Asbestos Materials

Site Boundary

- Project Footprint
- SEPP14 Coastal Wetland
- Structure Footprints

GHD

CLIENTS | PEOPLE | PERFORMANCE

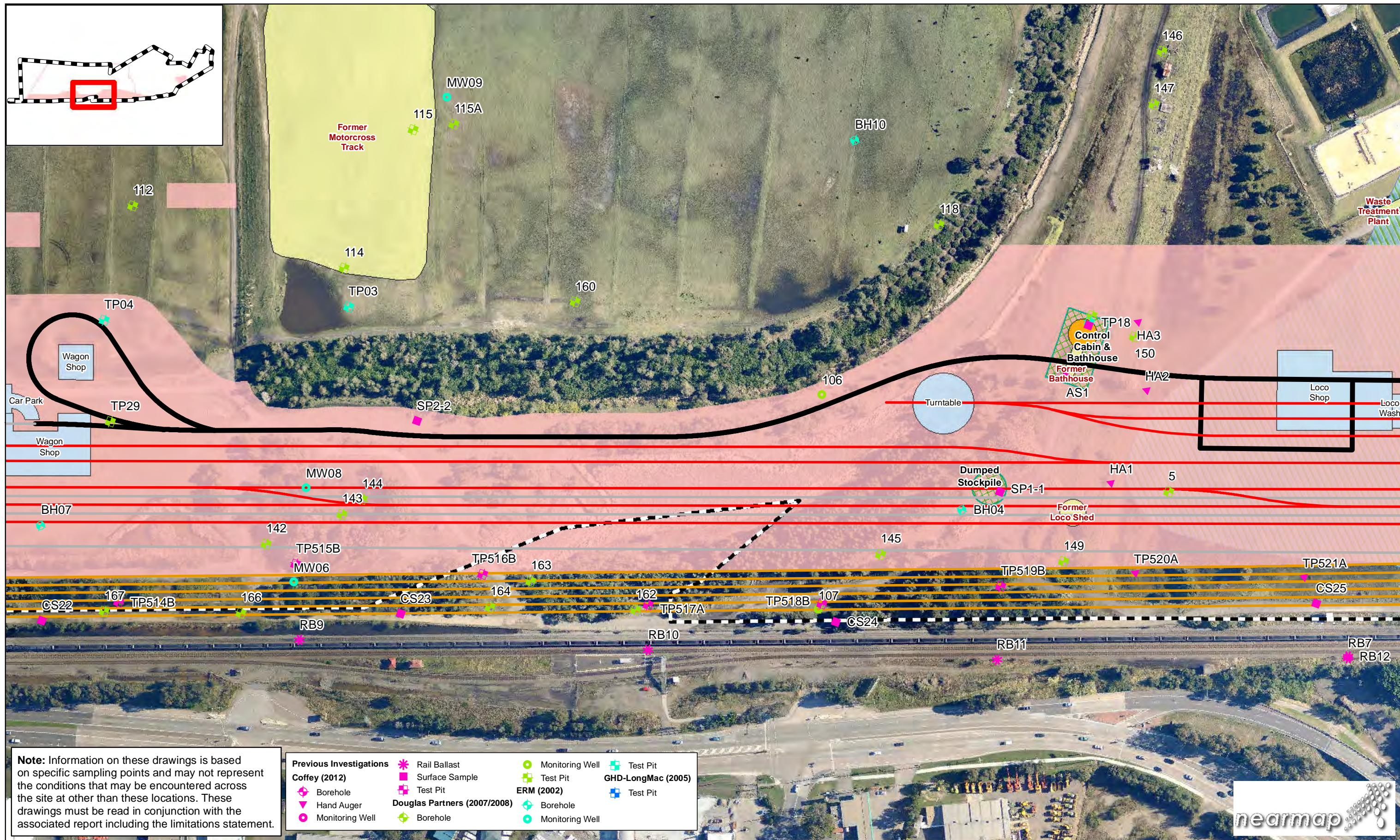
QR National Pty Ltd
NSW Long Term Train Support Facility

Contamination Assessment

2216395-06-FIG-D0001

Job Number 22-16395
Revision 3
Date 25 Sep 2012

Page 4 of 12

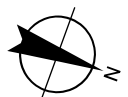


Note: Information on these drawings is based on specific sampling points and may not represent the conditions that may be encountered across the site at other than these locations. These drawings must be read in conjunction with the associated report including the limitations statement.

Previous Investigations			
Coffey (2012)			
Douglas Partners (2007/2008)			

1:2,000 Paper Size A3
0 10 20 40 60 80
Metres

Map Projection: Transverse Mercator
Horizontal Datum: GDA 1994
Grid: GDA 1994 MGA Zone 56



LEGEND

Contamination Areas of Concern
 TRH C10-C36 impact
 TRH C10-C36 and PAH impact
 Potential TRH C10-C36 and PAH impact

Additional Contamination Areas of Concern
 Confirmed Asbestos Materials
 Possible Asbestos Materials

Site Boundary
 Project Footprint
 SEPP14 Coastal Wetland
 Structure Footprints



CLIENTS | PEOPLE | PERFORMANCE

QR National Pty Ltd
NSW Long Term Train Support Facility

Contamination Assessment

2216395-06-FIG-D0001

Job Number 22-16395
Revision 3
Date 25 Sep 2012

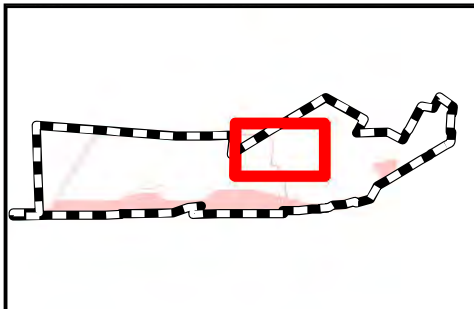
Page 5 of 12

G:\2216395\GIS\Maps\Deliverables\Internal\General\2216395-06-FIG-D0001(3).mxd

© 2012. Whilst every care has been taken to prepare this map, GHD, LPMA, Nearmap and Engenicom make no representations or warranties about its accuracy, reliability, completeness or suitability for any particular purpose and cannot accept liability and responsibility of any kind (whether in contract, tort or otherwise) for any expenses, losses, damages and/or costs (including indirect or consequential damage) which are or may be incurred by any party as a result of the map being inaccurate, incomplete or unsuitable in any way and for any reason.

Data source: LPMA: DCTB - 2007; Nearmap: Aerials - 2012; Engenicom: Design Data - 2012. Created by: mabamier

Level 3, GHD Tower, 24 Honeysuckle Drive, Newcastle NSW 2300 T 61 2 4979 9999 F 61 2 4979 9988 E ntlmail@ghd.com W www.ghd.com.au



Note: Information on these drawings is based on specific sampling points and may not represent the conditions that may be encountered across the site at other than these locations. These drawings must be read in conjunction with the associated report including the limitations statement.

Previous Investigations

Coffey (2012)

- Borehole
- Hand Auger
- Monitoring Well

Douglas Partners (2007/2008)

- Borehole

ERM (2002)

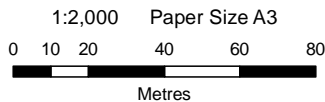
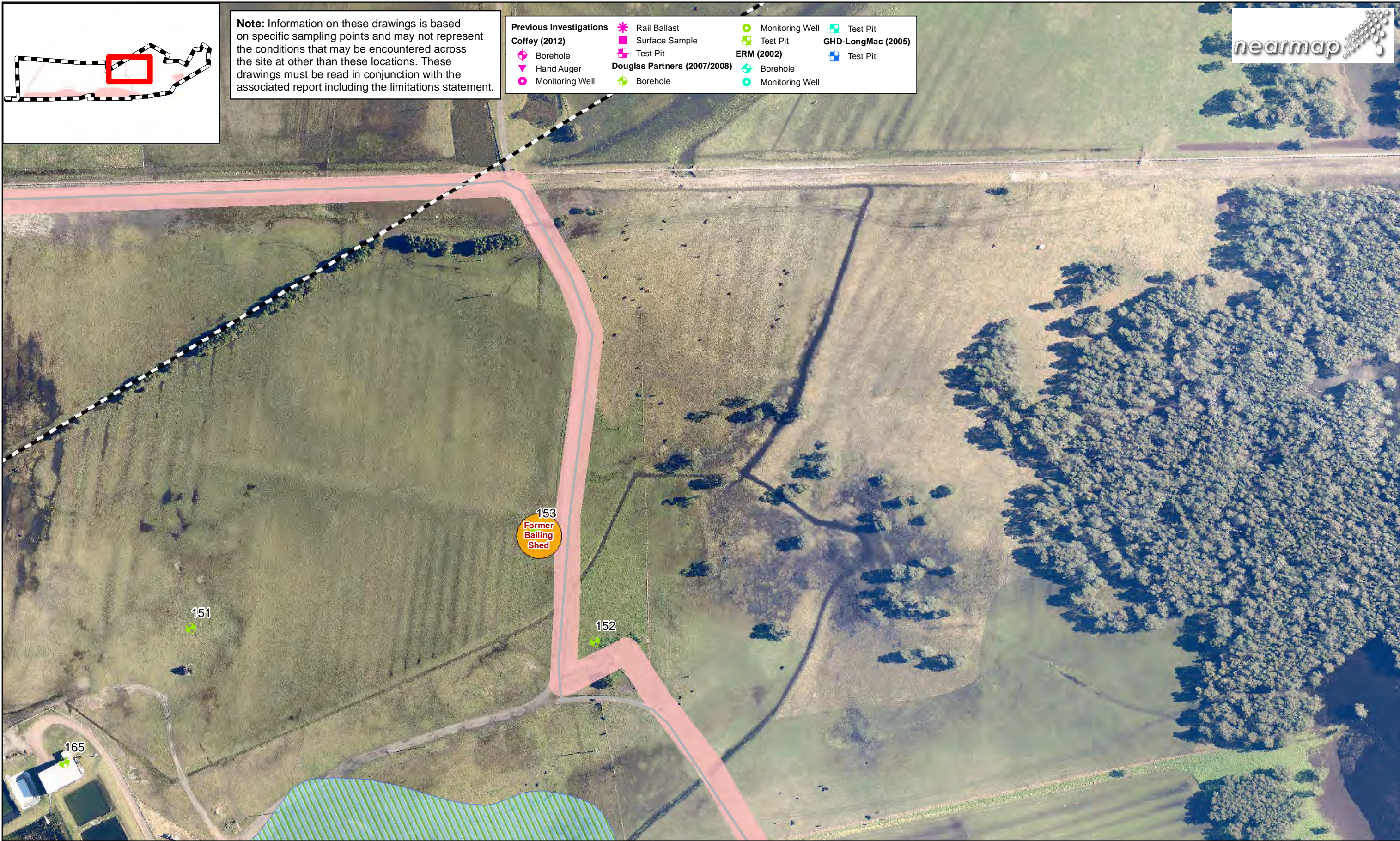
- Borehole
- Monitoring Well

GHD-LongMac (2005)

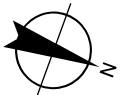
- Test Pit
- Test Pit

Legend for Symbols

- Rail Ballast
- Surface Sample
- Test Pit



Map Projection: Transverse Mercator
Horizontal Datum: GDA 1994
Grid: GDA 1994 MGA Zone 56



LEGEND

Contamination Areas of Concern

- TRH C10-C36 impact
- TRH C10-C36 and PAH impact
- Potential TRH C10-C36 and PAH impact

- Additional Contamination Areas of Concern
- Confirmed Asbestos Materials
- Possible Asbestos Materials

- Site Boundary
- Project Footprint
- SEPP14 Coastal Wetland
- Structure Footprints



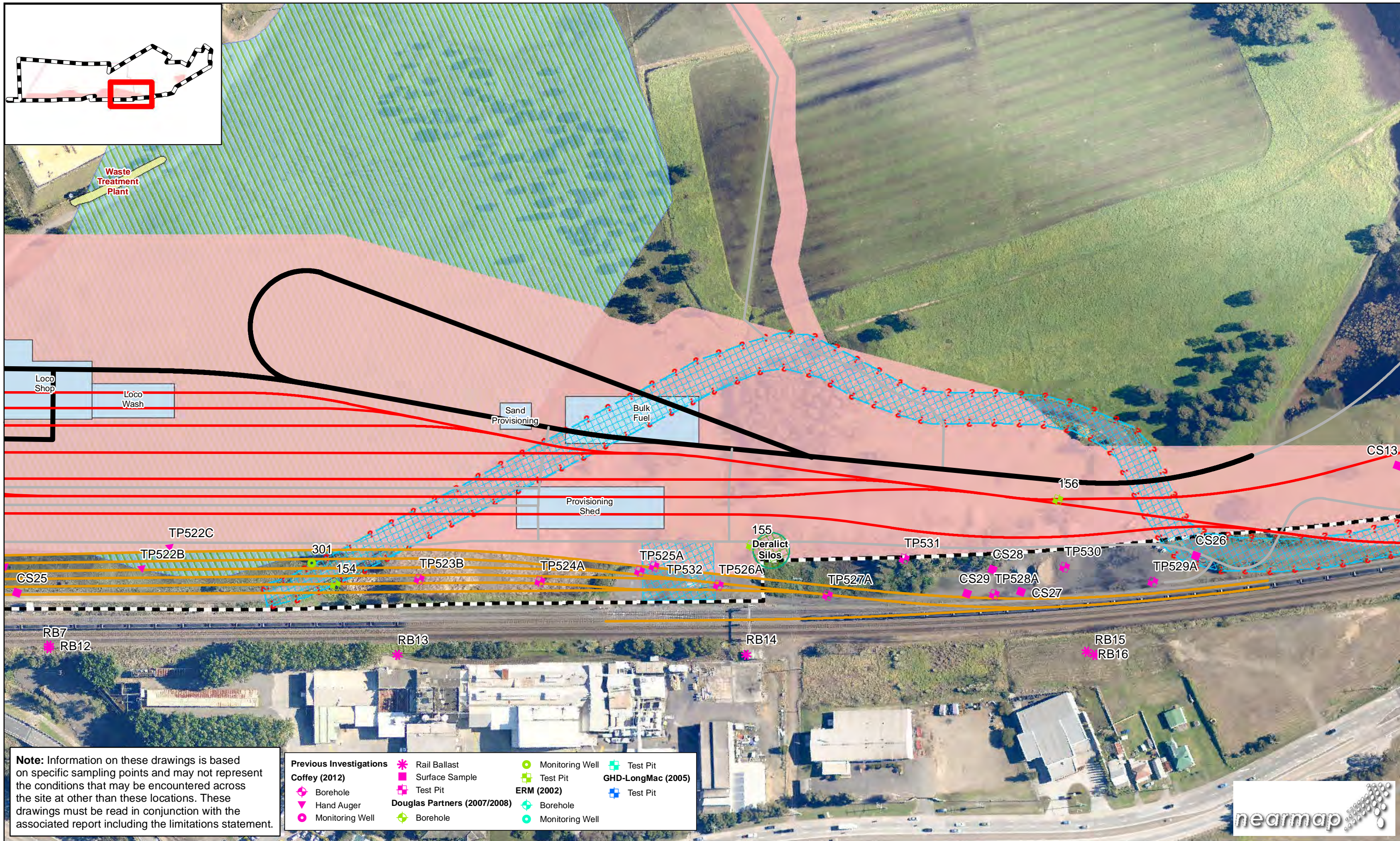
CLIENTS | PEOPLE | PERFORMANCE

QR National Pty Ltd
NSW Long Term Train Support Facility

Contamination Assessment

Job Number 22-16395
Revision 3
Date 25 Sep 2012

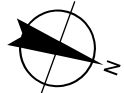
Page 6 of 12
2216395-06-FIG-D0001



Note: Information on these drawings is based on specific sampling points and may not represent the conditions that may be encountered across the site at other than these locations. These drawings must be read in conjunction with the associated report including the limitations statement.

Previous Investigations			
Coffey (2012)		GHD-LongMac (2005)	
	Borehole		Test Pit
	Hand Auger		Test Pit
	Monitoring Well		
Douglas Partners (2007/2008)		ERM (2002)	
	Rail Ballast		Monitoring Well
	Surface Sample		Test Pit
	Test Pit		Borehole
	Borehole		Monitoring Well

1:2,000 Paper Size A3
0 10 20 40 60 80
Metres



Map Projection: Transverse Mercator
Horizontal Datum: GDA 1994
Grid: GDA 1994 MGA Zone 56

LEGEND

Contamination Areas of Concern

- TRH C10-C36 impact
- TRH C10-C36 and PAH impact
- Potential TRH C10-C36 and PAH impact

- Additional Contamination Areas of Concern
- Confirmed Asbestos Materials
- Possible Asbestos Materials

- Site Boundary
- Project Footprint
- SEPP14 Coastal Wetland
- Structure Footprints



CLIENTS | PEOPLE | PERFORMANCE

QR National Pty Ltd
NSW Long Term Train Support Facility

Contamination Assessment

2216395-06-FIG-D0001

Job Number 22-16395
Revision 3
Date 25 Sep 2012

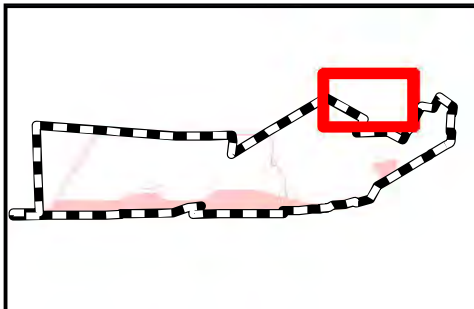
Page 7 of 12

G:\2216395\GIS\Maps\Deliverables\Internal\General\2216395-06-FIG-D0001(3).mxd

© 2012. Whilst every care has been taken to prepare this map, GHD, LPMA, Nearmap and Engenicom make no representations or warranties about its accuracy, reliability, completeness or suitability for any particular purpose and cannot accept liability and responsibility of any kind (whether in contract, tort or otherwise) for any expenses, losses, damages and/or costs (including indirect or consequential damage) which are or may be incurred by any party as a result of the map being inaccurate, incomplete or unsuitable in any way and for any reason.

Data source: LPMA: DCTB - 2007; Nearmap: Aerials - 2012; Engenicom: Design Data - 2012. Created by: mabamier

Level 3, GHD Tower, 24 Honeysuckle Drive, Newcastle NSW 2300 T 61 2 4979 9999 F 61 2 4979 9988 E ntlmail@ghd.com W www.ghd.com.au



Note: Information on these drawings is based on specific sampling points and may not represent the conditions that may be encountered across the site at other than these locations. These drawings must be read in conjunction with the associated report including the limitations statement.

Previous Investigations

Coffey (2012)

- Borehole
- Hand Auger
- Monitoring Well

Douglas Partners (2007/2008)

- Borehole

ERM (2002)

- Borehole
- Monitoring Well

GHD-LongMac (2005)

- Test Pit
- Test Pit

Legend

- Rail Ballast
- Surface Sample
- Test Pit



1:2,000 Paper Size A3

0 10 20 40 60 80 Metres

Map Projection: Transverse Mercator
Horizontal Datum: GDA 1994
Grid: GDA 1994 MGA Zone 56

LEGEND

Contamination Areas of Concern

- TRH C10-C36 impact
- TRH C10-C36 and PAH impact
- Potential TRH C10-C36 and PAH impact

Additional Contamination Areas of Concern

- Confirmed Asbestos Materials
- Possible Asbestos Materials

Site Boundary

- Project Footprint
- SEPP14 Coastal Wetland
- Structure Footprints

CLIENTS | PEOPLE | PERFORMANCE

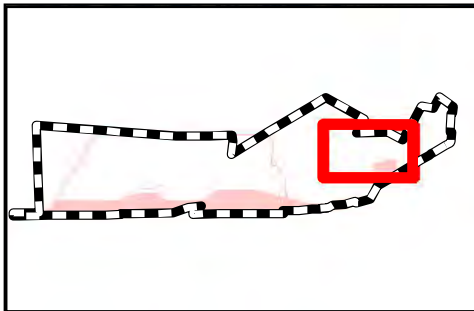
QR National Pty Ltd
NSW Long Term Train Support Facility

Contamination Assessment

2216395-06-FIG-D0001

Job Number 22-16395
Revision 3
Date 25 Sep 2012

Page 8 of 12



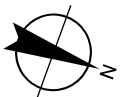
Note: Information on these drawings is based on specific sampling points and may not represent the conditions that may be encountered across the site at other than these locations. These drawings must be read in conjunction with the associated report including the limitations statement.

Previous Investigations			
Coffey (2012)		Rail Ballast	Monitoring Well
Surface Sample		Test Pit	Test Pit
Borehole		ERM (2002)	Test Pit
Hand Auger		Borehole	
Monitoring Well		Monitoring Well	
Douglas Partners (2007/2008)			
Borehole			



1:2,000 Paper Size A3
0 10 20 40 60 80
Metres

Map Projection: Transverse Mercator
Horizontal Datum: GDA 1994
Grid: GDA 1994 MGA Zone 56



LEGEND

Contamination Areas of Concern

- TRH C10-C36 impact
- TRH C10-C36 and PAH impact
- Potential TRH C10-C36 and PAH impact

Additional Contamination Areas of Concern

Confirmed Asbestos Materials
 Possible Asbestos Materials

Site Boundary

Project Footprint

SEPP14 Coastal Wetland

Structure Footprints



CLIENTS | PEOPLE | PERFORMANCE

QR National Pty Ltd
NSW Long Term Train Support Facility

Contamination Assessment

2216395-06-FIG-D0001

Job Number 22-16395
Revision 3
Date 25 Sep 2012

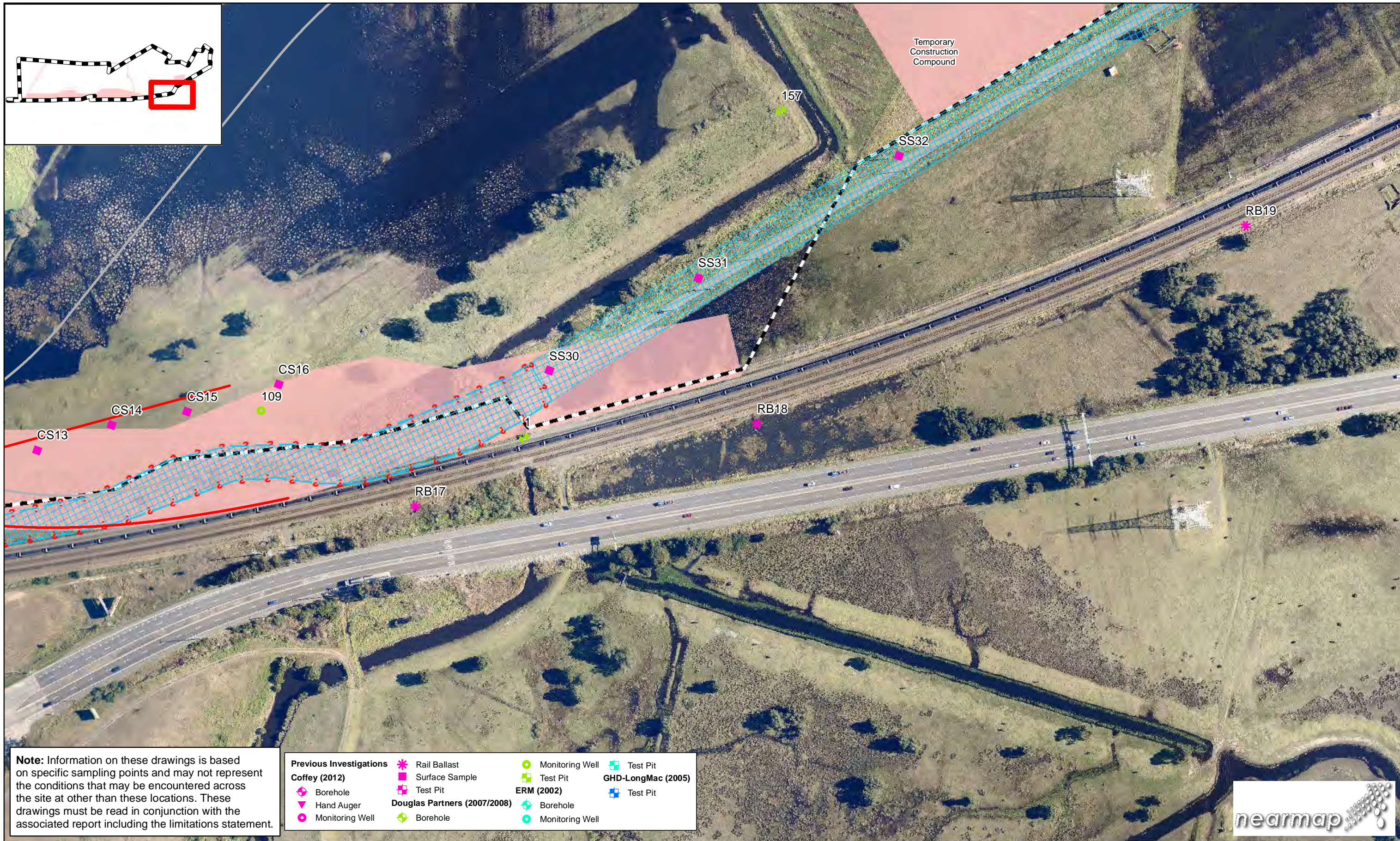
Page 9 of 12

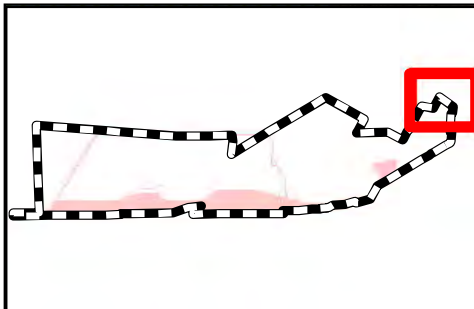
G:\2216395\GIS\Maps\Deliverables\Internal\General\2216395-06-FIG-D0001(3).mxd

© 2012. Whilst every care has been taken to prepare this map, GHD, LPMA, Nearmap and Engenicom make no representations or warranties about its accuracy, reliability, completeness or suitability for any particular purpose and cannot accept liability and responsibility of any kind (whether in contract, tort or otherwise) for any expenses, losses, damages and/or costs (including indirect or consequential damage) which are or may be incurred by any party as a result of the map being inaccurate, incomplete or unsuitable in any way and for any reason.

Data source: LPMA: DCTB - 2007; Nearmap: Aerials - 2012; Engenicom: Design Data - 2012. Created by: mabamier

Level 3, GHD Tower, 24 Honeysuckle Drive, Newcastle NSW 2300 T 61 2 4979 9999 F 61 2 4979 9988 E ntlmail@ghd.com W www.ghd.com.au





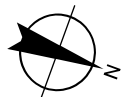
Note: Information on these drawings is based on specific sampling points and may not represent the conditions that may be encountered across the site at other than these locations. These drawings must be read in conjunction with the associated report including the limitations statement.

- | | | | |
|--------------------------------|-------------------------------------|-------------------|---------------------------|
| Previous Investigations | Rail Ballast | Monitoring Well | Test Pit |
| Coffey (2012) | Surface Sample | Test Pit | GHD-LongMac (2005) |
| Borehole | Test Pit | ERM (2002) | Test Pit |
| Hand Auger | Douglas Partners (2007/2008) | Borehole | |
| Monitoring Well | Borehole | Monitoring Well | |



1:2,000 Paper Size A3
0 10 20 40 60 80
Metres

Map Projection: Transverse Mercator
Horizontal Datum: GDA 1994
Grid: GDA 1994 MGA Zone 56



LEGEND

Contamination Areas of Concern

- TRH C10-C36 impact
- TRH C10-C36 and PAH impact
- Potential TRH C10-C36 and PAH impact

- Additional Contamination Areas of Concern
- Confirmed Asbestos Materials
- Possible Asbestos Materials

- Site Boundary
- Project Footprint
- SEPP14 Coastal Wetland
- Structure Footprints



CLIENTS | PEOPLE | PERFORMANCE

QR National Pty Ltd
NSW Long Term Train Support Facility

Contamination Assessment

Job Number 22-16395
Revision 3
Date 25 Sep 2012

Page 11 of 12
2216395-06-FIG-D0001

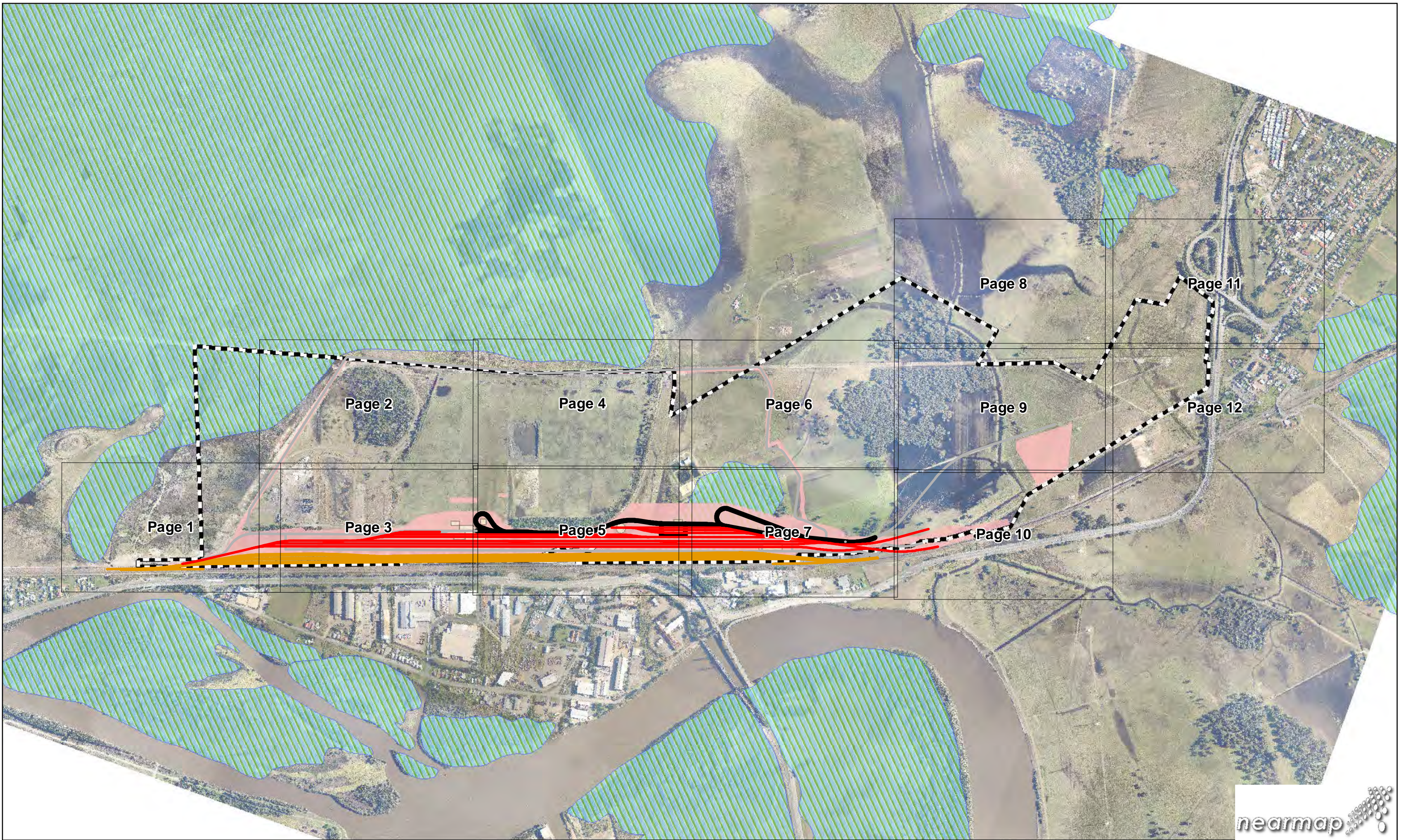
G:\2216395\GIS\Maps\Deliverables\Internal\General\2216395-06-FIG-D0001(3).mxd

© 2012. Whilst every care has been taken to prepare this map, GHD, LPMA, Nearmap and Engenicom make no representations or warranties about its accuracy, reliability, completeness or suitability for any particular purpose and cannot accept liability and responsibility of any kind (whether in contract, tort or otherwise) for any expenses, losses, damages and/or costs (including indirect or consequential damage) which are or may be incurred by any party as a result of the map being inaccurate, incomplete or unsuitable in any way and for any reason.

Data source: LPMA: DCTB - 2007; Nearmap: Aerials - 2012; Engenicom: Design Data - 2012. Created by: mabamier

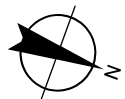
Level 3, GHD Tower, 24 Honeysuckle Drive, Newcastle NSW 2300 T 61 2 4979 9999 F 61 2 4979 9988 E ntlmail@ghd.com W www.ghd.com.au





1:12,500 Paper Size A3
0 75 150 300 450 600
Metres

Map Projection: Transverse Mercator
Horizontal Datum: GDA 1994
Grid: GDA 1994 MGA Zone 56



LEGEND

- Track Centrelines
- ARTC HRR Rail Centreline Design
- Road 5 metres
- Road 10 metres
- Site Boundary
- Structure Footprints
- Project Footprint
- SEPP14 Coastal Wetlands



CLIENTS | PEOPLE | PERFORMANCE

QR National Pty Ltd
NSW Long Term Train Support Facility

Contamination Assessment Index Sheet

Job Number 22-16395
Revision 2
Date 25 Sep 2012

2216395-06-FIG-D0002

G:\2216395\GIS\Maps\Deliverables\Internal\General\2216395-06-FIG-D0002(2).mxd

© 2012. Whilst every care has been taken to prepare this map, GHD, LPMA, Nearmap and Engenicom make no representations or warranties about its accuracy, reliability, completeness or suitability for any particular purpose and cannot accept liability and responsibility of any kind (whether in contract, tort or otherwise) for any expenses, losses, damages and/or costs (including indirect or consequential damage) which are or may be incurred by any party as a result of the map being inaccurate, incomplete or unsuitable in any way and for any reason.

Data source: LPMA: DCTB - 2007; Nearmap: Aerials - 2012; Engenicom: Design Data - 2012. Created by: mabarnier

Level 3, GHD Tower, 24 Honeysuckle Drive, Newcastle NSW 2300 T 61 2 4979 9999 F 61 2 4979 9988 E ntlmail@ghd.com W www.ghd.com.au



1:10,000 Paper Size A3
0 50 100 200 300 400
Metres
Map Projection: Transverse Mercator
Horizontal Datum: GDA 1994
Grid: GDA 1994 MGA Zone 56

LEGEND

QRN Rail Centrelines

ARTC HRR Rail Centreline Design

Road 5 metres

Road 10 metres

QRN TSF Site Boundary

TSF Development Area

QRN TSF Project Footprint

Property Boundaries

Structure Footprints

CLIENTS | PEOPLE | PERFORMANCE

QR National Pty Ltd
NSW Long Term Train Support Facility

Project Footprint and Property Descriptions
Lot & Deposited Plan

Job Number
Revision
Date

22-16395
A
21 Sep 2012

G:\2216395\GIS\Maps\Deliverables\Internal\General\2216395-07-FIG-D0005.mxd

© 2012. Whilst every care has been taken to prepare this map, GHD, LPMA, Nearmap and Enginicom make no representations or warranties about its accuracy, reliability, completeness or suitability for any particular purpose and cannot accept liability and responsibility of any kind (whether in contract, tort or otherwise) for any expenses, losses, damages and/or costs (including indirect or consequential damage) which are or may be incurred by any party as a result of the map being inaccurate, incomplete or unsuitable in any way and for any reason.

Data source: LPMA: DCTB - 2007; Nearmap: Aerials - 2012; Enginicom: Design Data - 2012. Created by:mabarnier

Level 3, GHD Tower, 24 Honeysuckle Drive, Newcastle NSW 2300 T 61 2 4979 9999 F 61 2 4979 9988 E ntlmail@ghd.com W www.ghd.com.au