



DRAWING ADAPTED FROM iPLAN PLANNING PORTAL



**Douglas Partners**  
Geotechnics Environment Groundwater

Sydney, Newcastle,  
Brisbane, Melbourne,  
Perth, Wyong,

Wollongong, Campbelltown,  
Townsville, Cairns

TITLE: LOCATION OF PREVIOUS INVESTIGATION DATA  
PRELIMINARY CONTAMINATION ASSESSMENT, HEXHAM

CLIENT: QR NATIONAL

OFFICE: NEWCASTLE

DRAWN BY: PLH

SCALE: 1:20000 (approx)

PROJECT No: 39798.06

DATE: 31.05.2012

DRAWING No: 4





- Legend
- Site Boundary
  - + Monitoring Well
  - + Soil Bore
  - Test Pit

**Figure 2**  
**Sample Location Map**

---

Client: QR National  
 Project: Project Thomas II

---

Drawing No: 0119970s\_PTH\_G002\_R0.mxd  
 Date: 13/10/2010 Drawing Size: A3  
 Drawn By: GC Reviewed By: JF  
 Projection: GDA 1994 MGA Zone 56  
 Scale: Refer to scale bar

---

0 90 180 270m

Maps and figures contained within this document may be based on third party data, may not be to scale and is intended for use as a guide only. ERM does not warrant the accuracy of any such maps or figures.

Environmental Resources Management Australia Pty Ltd

Brisbane, Canberra, Hunter Valley, Melbourne, Perth, Port Macquarie, Sydney











1:10,000 Paper Size A3

0 50 100 200 300 400

Metres

Map Projection: Transverse Mercator  
Horizontal Datum: GDA 1994  
Grid: GDA 1994 MGA Zone 56

LEGEND

Areas Of Disturbance Cut mm

300

800

1000

1500

1600

2600

Cadastral Site Boundary

Roads

ARTC HRR Rail centrline

QRN Rail Centreline

GHD

CLIENTS|PEOPLE|PERFORMANCE

QR National Pty  
NSW Long Term Train Support Facility

Areas of Disturbance  
Cut

Job Number  
Revision  
Date

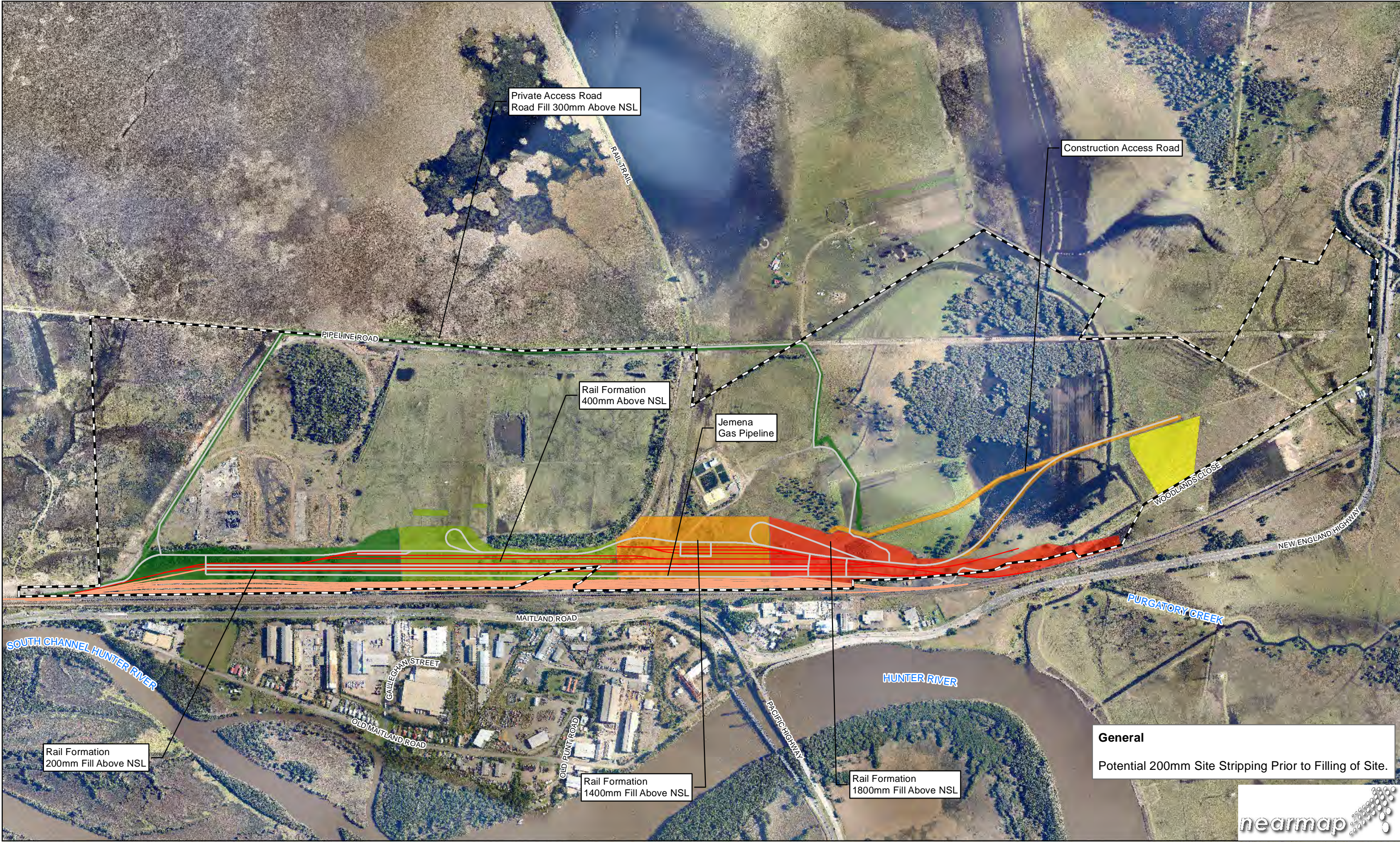
22-16395  
4  
10 Oct 2012

2216395-16-FIG-C0002

G:\2216395\GIS\Maps\Deliverables\Internal\General\2216395-16-FIG-C0002(4).mxd  
© 2012. Whilst every care has been taken to prepare this map, GHD, LPMA, Nearmap and Engenicom make no representations or warranties about its accuracy, reliability, completeness or suitability for any particular purpose and cannot accept liability and responsibility of any kind (whether in contract, tort or otherwise) for any expenses, losses, damages and/or costs (including indirect or consequential damage) which are or may be incurred by any party as a result of the map being inaccurate, incomplete or unsuitable in any way and for any reason.  
Data source: LPMA: DTDB - 2007; Nearmap: Aerials - 2012; Engenicom: Design Data - 2012. Created by:mabarnier

Level 3, GHD Tower, 24 Honeysuckle Drive, Newcastle NSW 2300 T 61 2 4979 9999 F 61 2 4979 9988 E ntlmail@ghd.com W www.ghd.com.au





**General**  
Potential 200mm Site Stripping Prior to Filling of Site.



1:10,000 Paper Size A3  
0 50 100 200 300 400  
Metres  
Map Projection: Transverse Mercator  
Horizontal Datum: GDA 1994  
Grid: GDA 1994 MGA Zone 56

LEGEND

Areas Of Disturbance Fill mm

0-200

200-400

500

1400

1800

Cadastral Site Boundary

Roads

ARTC HRR Rail centrlne

QRN Rail Centreline

CLIENTS|PEOPLE|PERFORMANCE

QR National Pty Ltd  
NSW Long Term Train Support Facility  
  
Areas of Disturbance  
Fill

Job Number 22-16395  
Revision 2  
Date 26 Sep 2012  
  
2216395-16-FIG-C0003

G:\2216395\GIS\Maps\Deliverables\Internal\General\2216395-16-FIG-C0003(2).mxd  
© 2012. Whilst every care has been taken to prepare this map, GHD, LPMA, Nearmap and Engenicom make no representations or warranties about its accuracy, reliability, completeness or suitability for any particular purpose and cannot accept liability and responsibility of any kind (whether in contract, tort or otherwise) for any expenses, losses, damages and/or costs (including indirect or consequential damage) which are or may be incurred by any party as a result of the map being inaccurate, incomplete or unsuitable in any way and for any reason.  
Data source: LPMA: DTDB - 2007; Nearmap: Aerial - 2012; Engenicom: Design Data - 2012. Created by:mabarnier  
Level 3, GHD Tower, 24 Honeysuckle Drive, Newcastle NSW 2300 T 61 2 4979 9999 F 61 2 4979 9988 E ntmail@ghd.com W www.ghd.com.au