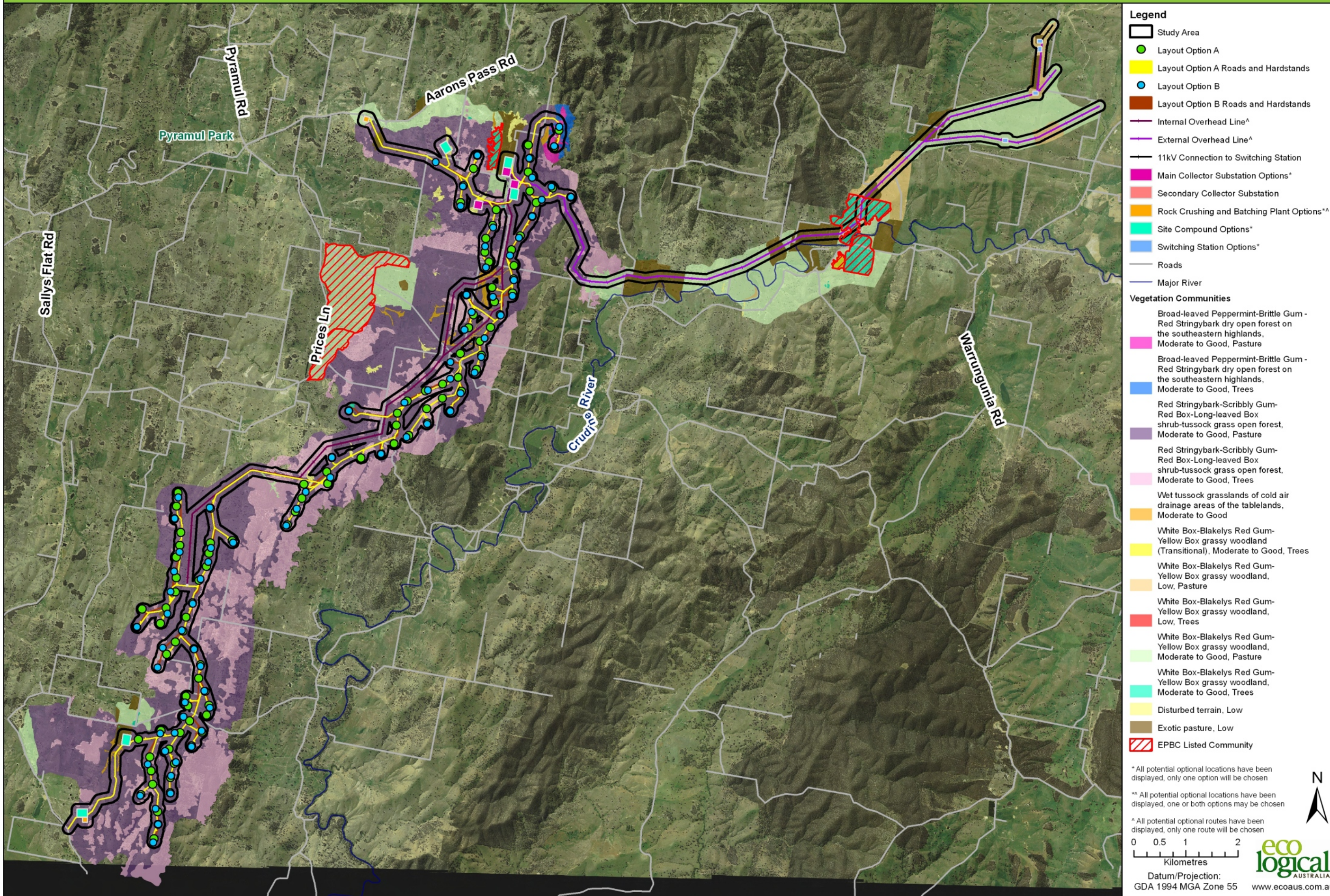


Vegetation Communities



Legend

- Study Area
- Layout Option A
- Layout Option A Roads and Hardstands
- Layout Option B
- Layout Option B Roads and Hardstands
- Internal Overhead Line[^]
- External Overhead Line[^]
- 11kV Connection to Switching Station
- Main Collector Substation Options^{*}
- Secondary Collector Substation
- Rock Crushing and Batching Plant Options^{**}
- Site Compound Options^{*}
- Switching Station Options^{*}
- Roads
- Major River

Vegetation Communities

- Broad-leaved Peppermint-Brittle Gum - Red Stringybark dry open forest on the southeastern highlands, Moderate to Good, Pasture
- Broad-leaved Peppermint-Brittle Gum - Red Stringybark dry open forest on the southeastern highlands, Moderate to Good, Trees
- Red Stringybark-Scribbly Gum- Red Box-Long-leaved Box shrub-tussock grass open forest, Moderate to Good, Pasture
- Red Stringybark-Scribbly Gum- Red Box-Long-leaved Box shrub-tussock grass open forest, Moderate to Good, Trees
- Wet tussock grasslands of cold air drainage areas of the tablelands, Moderate to Good
- White Box-Blakelys Red Gum- Yellow Box grassy woodland (Transitional), Moderate to Good, Trees
- White Box-Blakelys Red Gum- Yellow Box grassy woodland, Low, Pasture
- White Box-Blakelys Red Gum- Yellow Box grassy woodland, Low, Trees
- White Box-Blakelys Red Gum- Yellow Box grassy woodland, Moderate to Good, Pasture
- White Box-Blakelys Red Gum- Yellow Box grassy woodland, Moderate to Good, Trees
- Disturbed terrain, Low
- Exotic pasture, Low
- EPBC Listed Community

^{*} All potential optional locations have been displayed, only one option will be chosen

^{**} All potential optional locations have been displayed, one or both options may be chosen

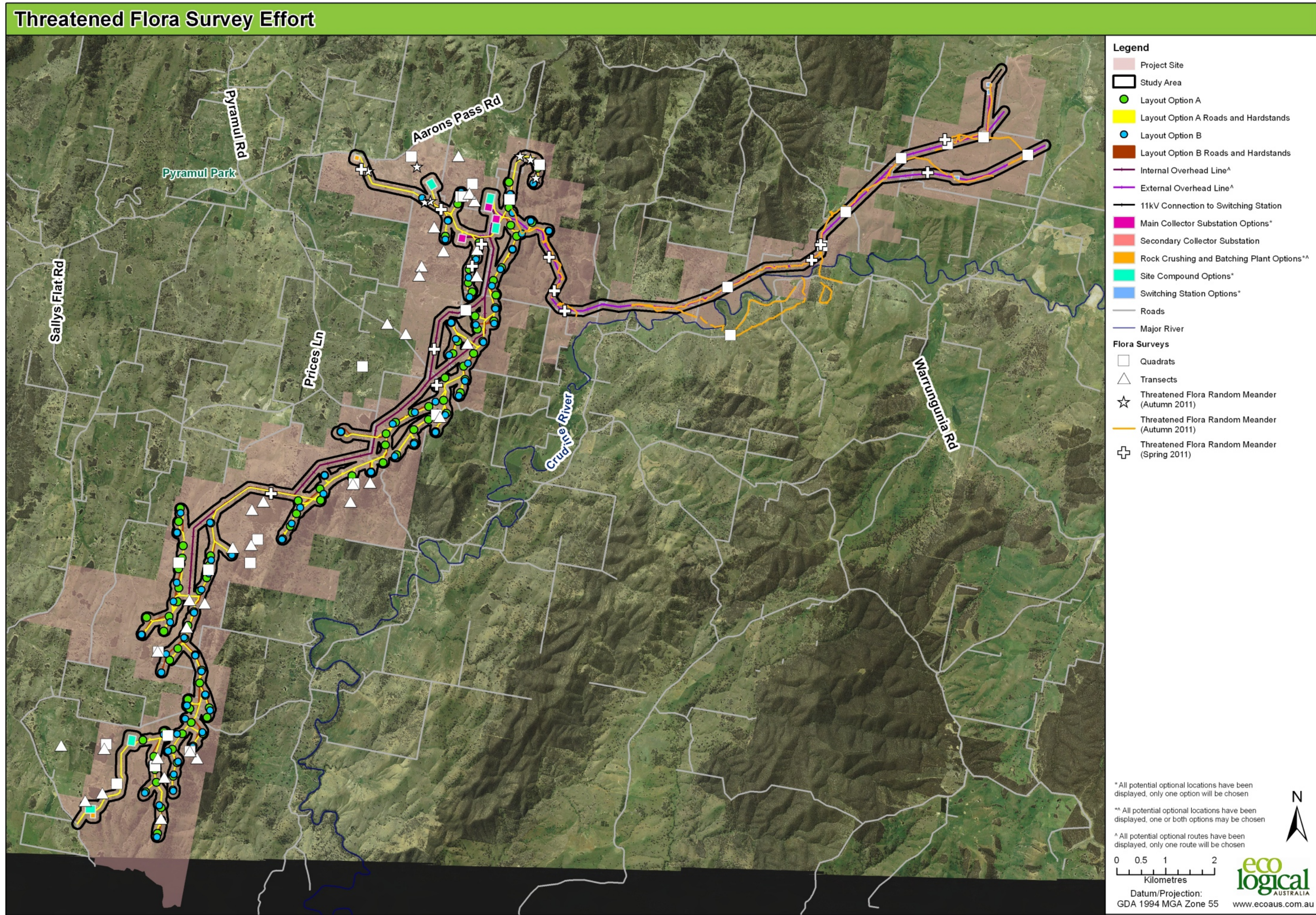
[^] All potential optional routes have been displayed, only one route will be chosen

0 0.5 1 2
Kilometres

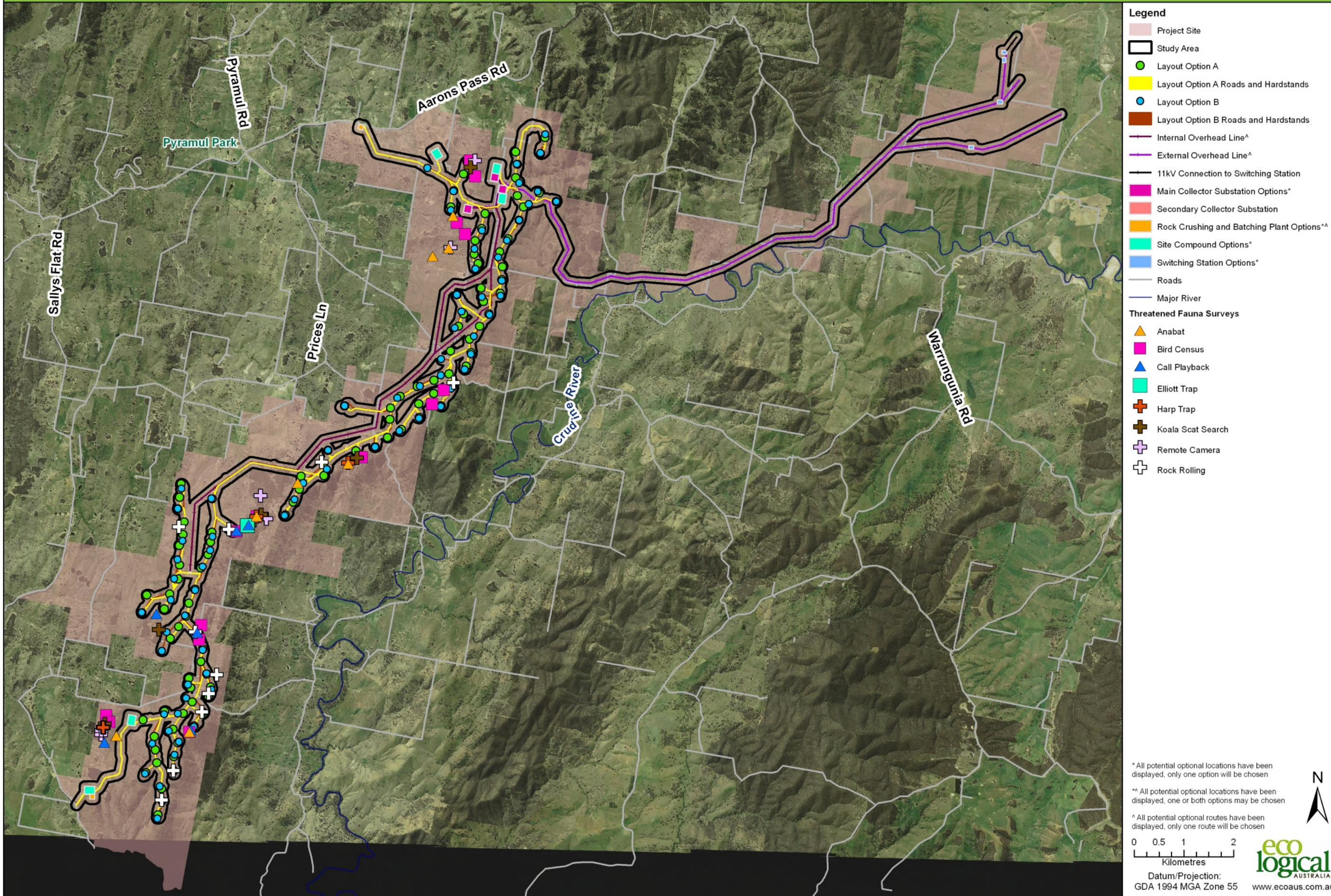
Datum/Projection:
GDA 1994 MGA Zone 55

eco logical AUSTRALIA
www.ecoaus.com.au

Prepared by: VH
Approved by: ECS
Date: 08/02/2012



Threatened Fauna Survey Effort



- Legend**
- Project Site
 - Study Area
 - Layout Option A
 - Layout Option A Roads and Hardstands
 - Layout Option B
 - Layout Option B Roads and Hardstands
 - Internal Overhead Line[^]
 - External Overhead Line[^]
 - 11kV Connection to Switching Station
 - Main Collector Substation Options^{*}
 - Secondary Collector Substation
 - Rock Crushing and Batching Plant Options^{**}
 - Site Compound Options^{*}
 - Switching Station Options^{*}
 - Roads
 - Major River
- Threatened Fauna Surveys**
- Anabat
 - Bird Census
 - Call Playback
 - Elliott Trap
 - Harp Trap
 - Koala Scat Search
 - Remote Camera
 - Rock Rolling

* All potential optional locations have been displayed, only one option will be chosen

** All potential optional locations have been displayed, one or both options may be chosen

[^] All potential optional routes have been displayed, only one route will be chosen

0 0.5 1 2
Kilometres

Datum/Projection:
GDA 1994 MGA Zone 55

eco logical AUSTRALIA
www.ecoaus.com.au