

JUNE 22 - 9:00AM



EXISTING SHADOW



PROPOSED ADDITIONAL SHADOW

Westfield

GIC

Westfield
RETAIL TRUST

WESTFIELD PARRAMATTA PART 3A
Shadow Analysis - Additional Shadow by Proposed Building

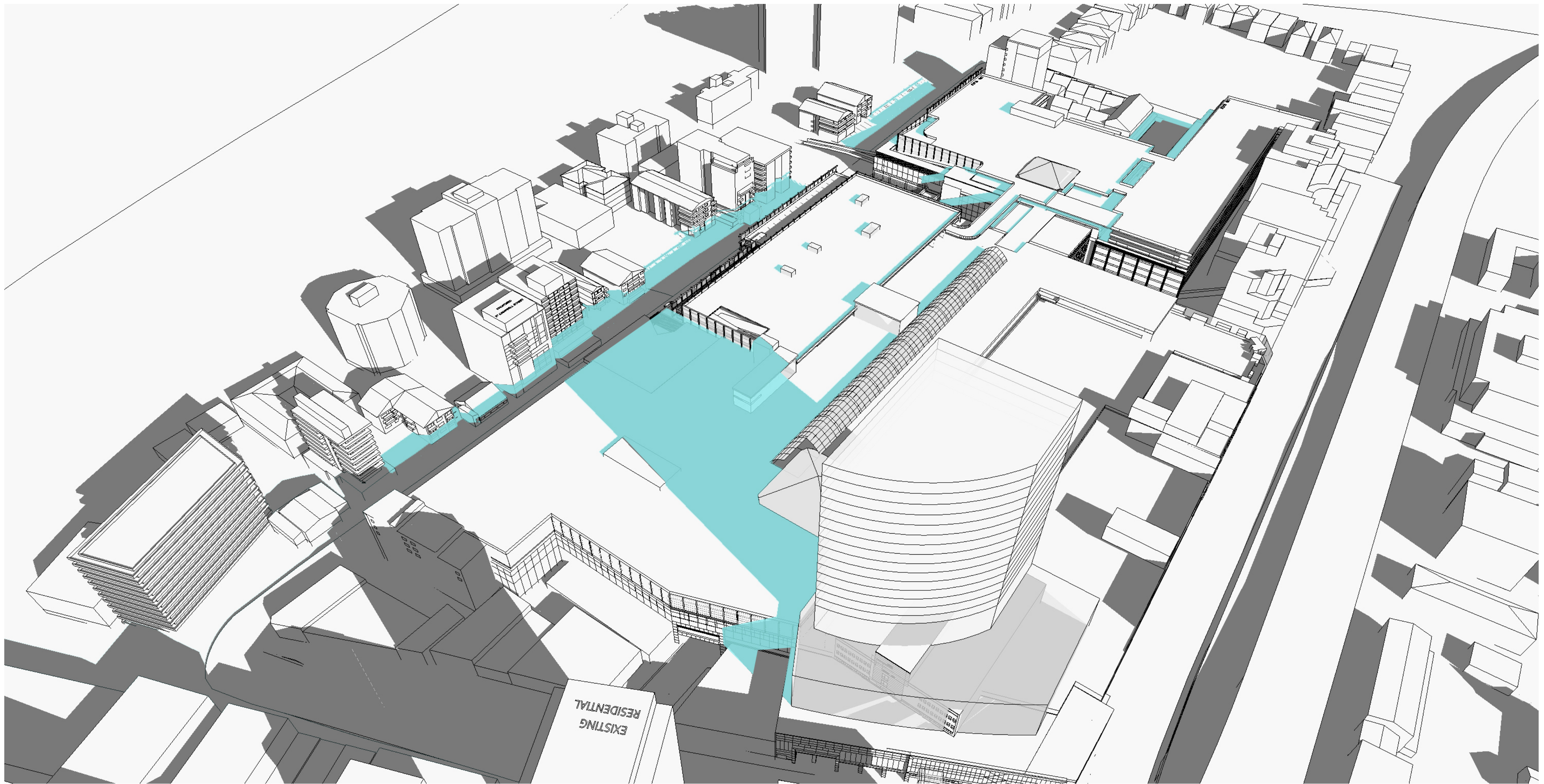
SCHEME: PA-2012-SCH11-Y3

DATE: NOVEMBER 2012

SCALE: NTS

JOB NO: D6727

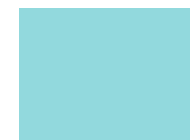
REV: C



JUNE 22 - 10:00AM



EXISTING SHADOW



PROPOSED ADDITIONAL SHADOW

Westfield

GIC

Westfield
RETAIL TRUST

WESTFIELD PARRAMATTA PART 3A
Shadow Analysis - Additional Shadow by Proposed Building

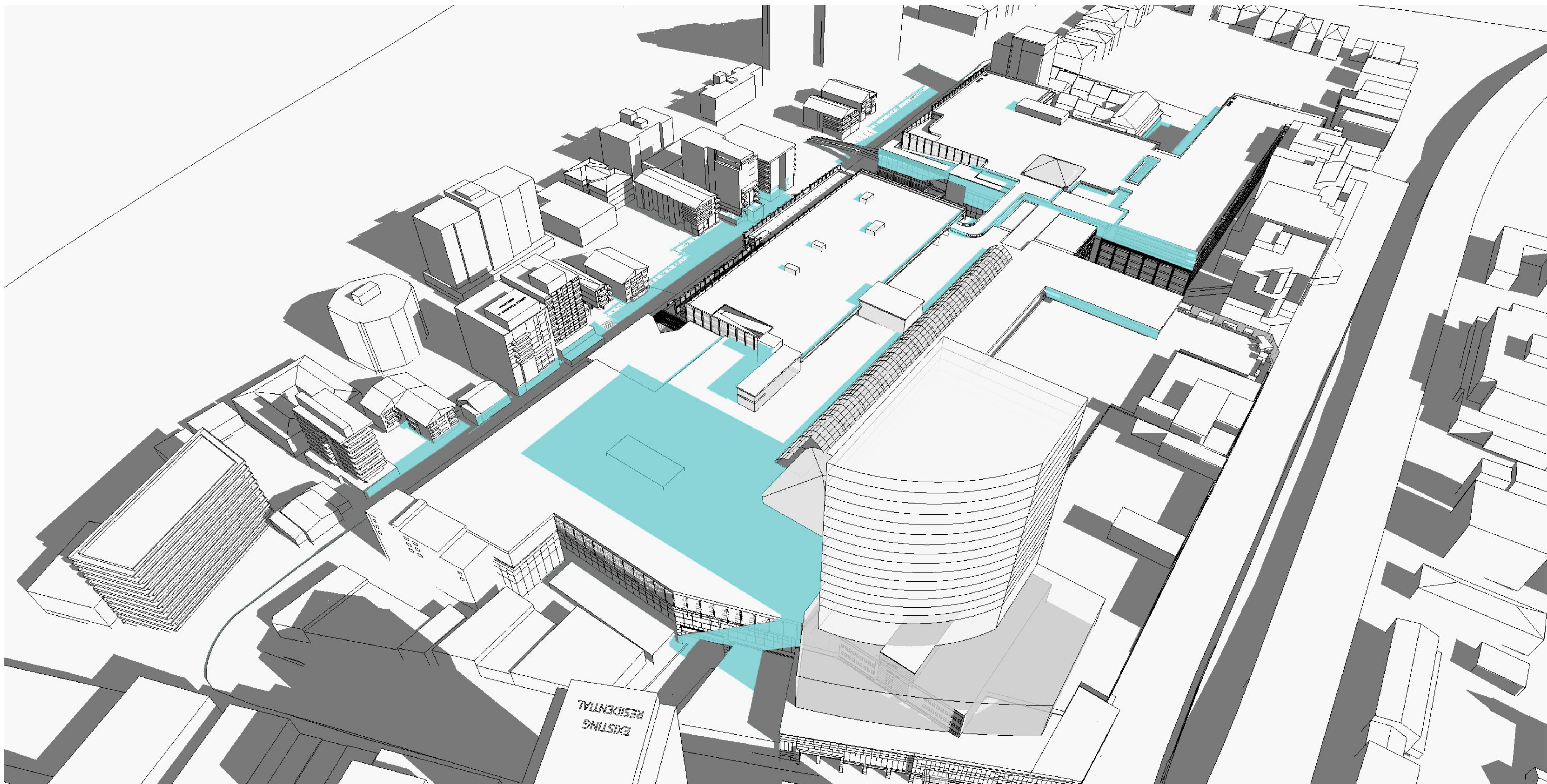
SCHEME: PA-2012-SCH11-Y3

DATE: NOVEMBER 2012

SCALE: NTS

JOB NO: D6727

REV: C



JUNE 22 - 11:00AM



EXISTING SHADOW



PROPOSED ADDITIONAL SHADOW

Westfield

GIC

Westfield
RETAIL TRUST

WESTFIELD PARRAMATTA **PART 3A**
Shadow Analysis - Additional Shadow by Proposed Building

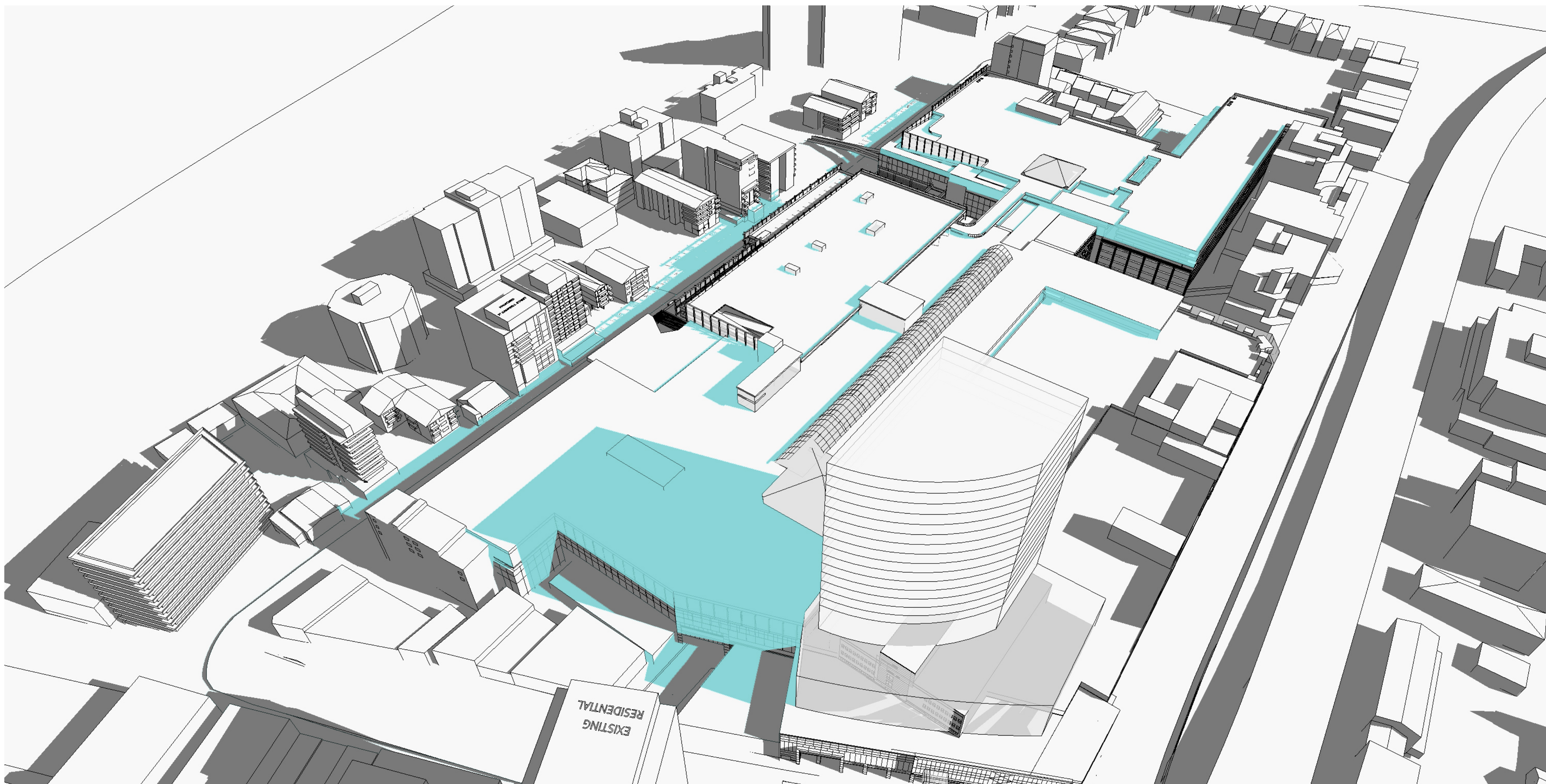
SCHEME: PA-2012-SCH11-Y3

DATE: NOVEMBER 2012

SCALE: NTS

JOB NO: D6727

REV: C



JUNE 22 - 12:00 PM



EXISTING SHADOW



PROPOSED ADDITIONAL SHADOW

Westfield

GIC

Westfield
RETAIL TRUST

WESTFIELD PARRAMATTA PART 3A
Shadow Analysis - Additional Shadow by Proposed Building

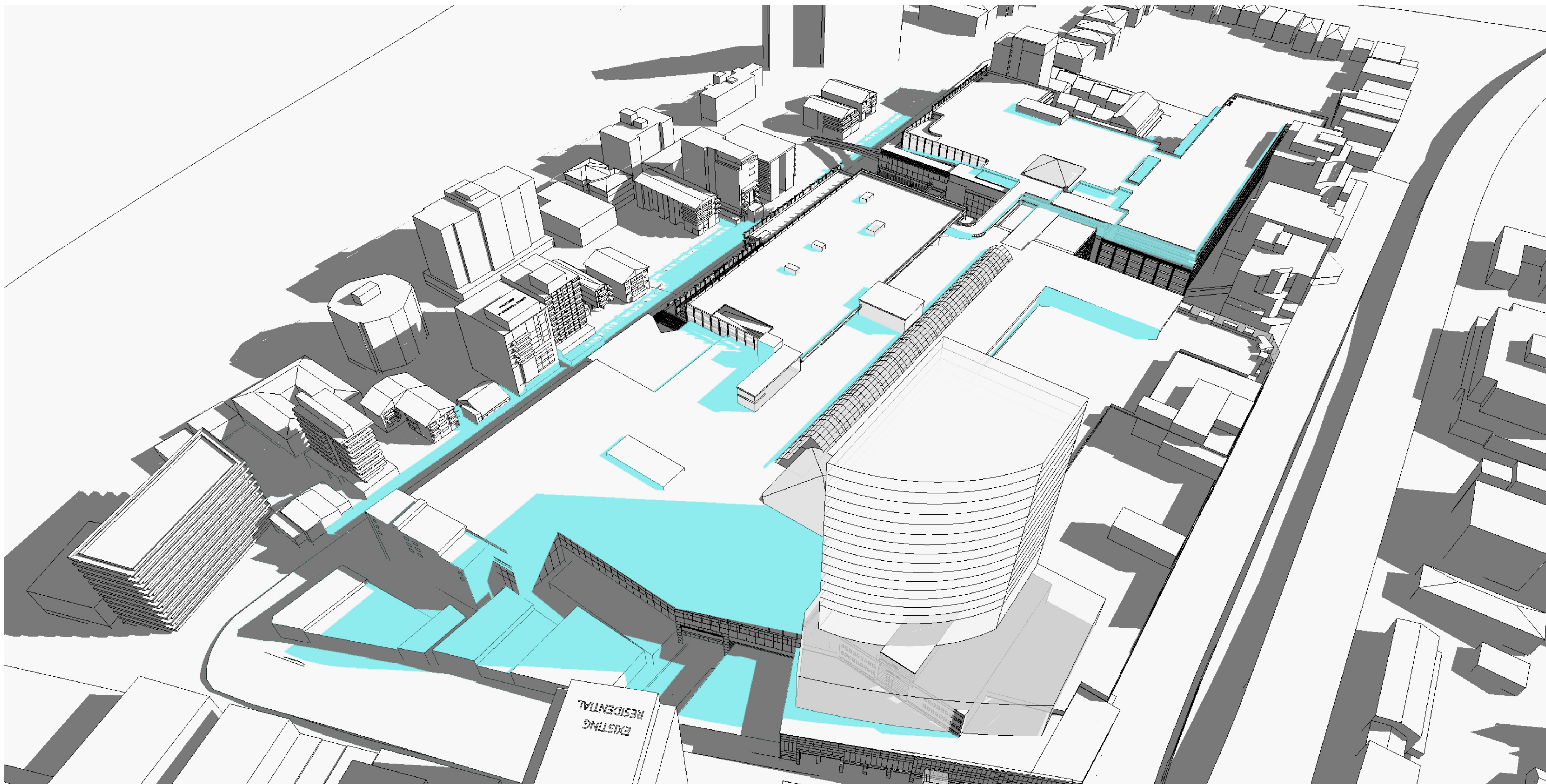
SCHEME: PA-2012-SCH11-Y3

DATE: NOVEMBER 2012

SCALE: NTS

JOB NO: D6727

REV: C



JUNE 22 - 1:00 PM



EXISTING SHADOW



PROPOSED ADDITIONAL SHADOW

Westfield



Westfield
RETAIL TRUST

WESTFIELD PARRAMATTA PART 3A

Shadow Analysis - Additional Shadow by Proposed Building

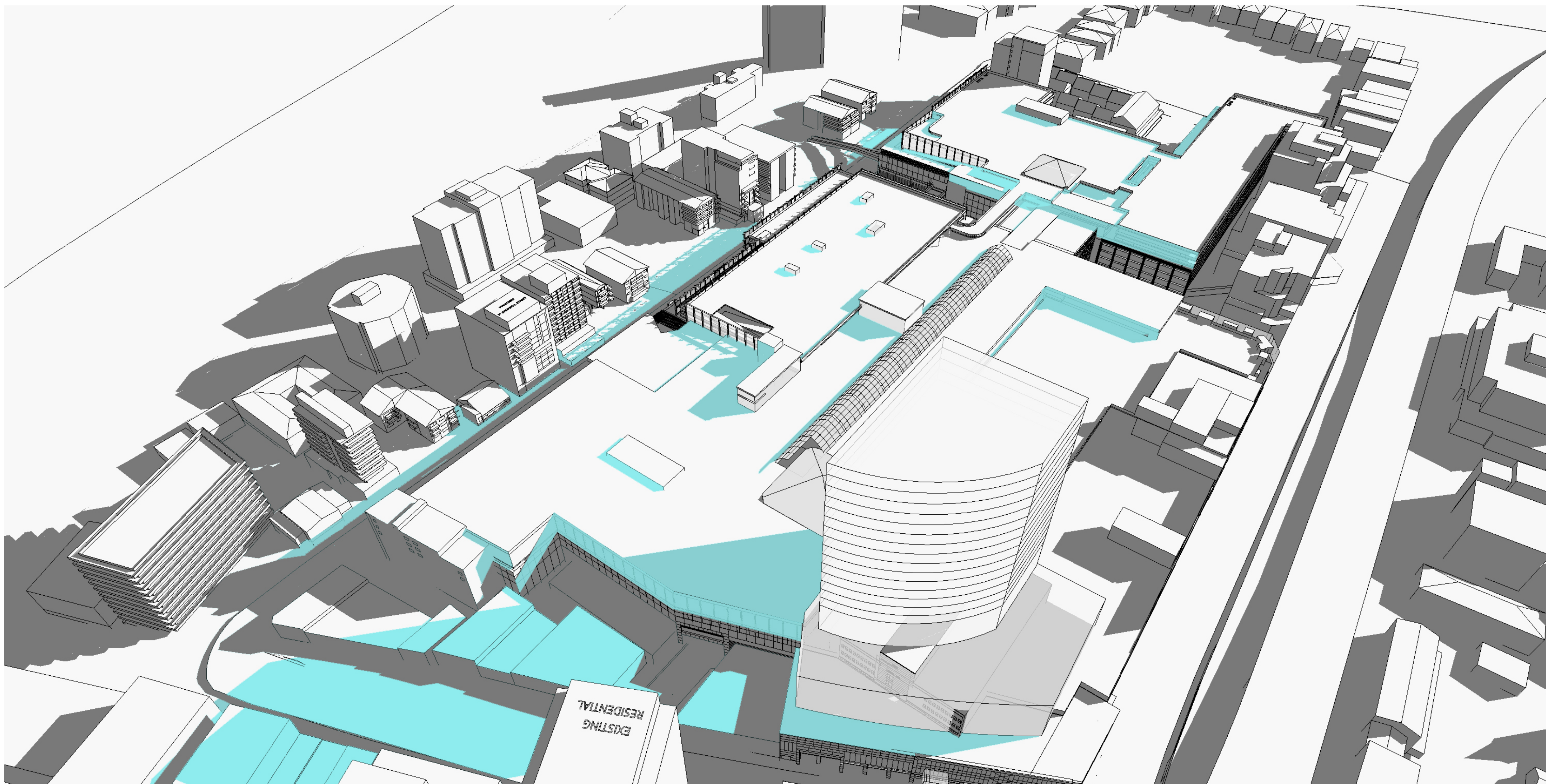
SCHEME: PA-2012-SCH11-Y3

DATE: NOVEMBER 2012

SCALE: NTS

JOB NO: D6727

REV: C



JUNE 22 - 2:00 PM



EXISTING SHADOW



PROPOSED ADDITIONAL SHADOW

Westfield



Westfield
RETAIL TRUST

WESTFIELD PARRAMATTA **PART 3A**
Shadow Analysis - Additional Shadow by Proposed Building

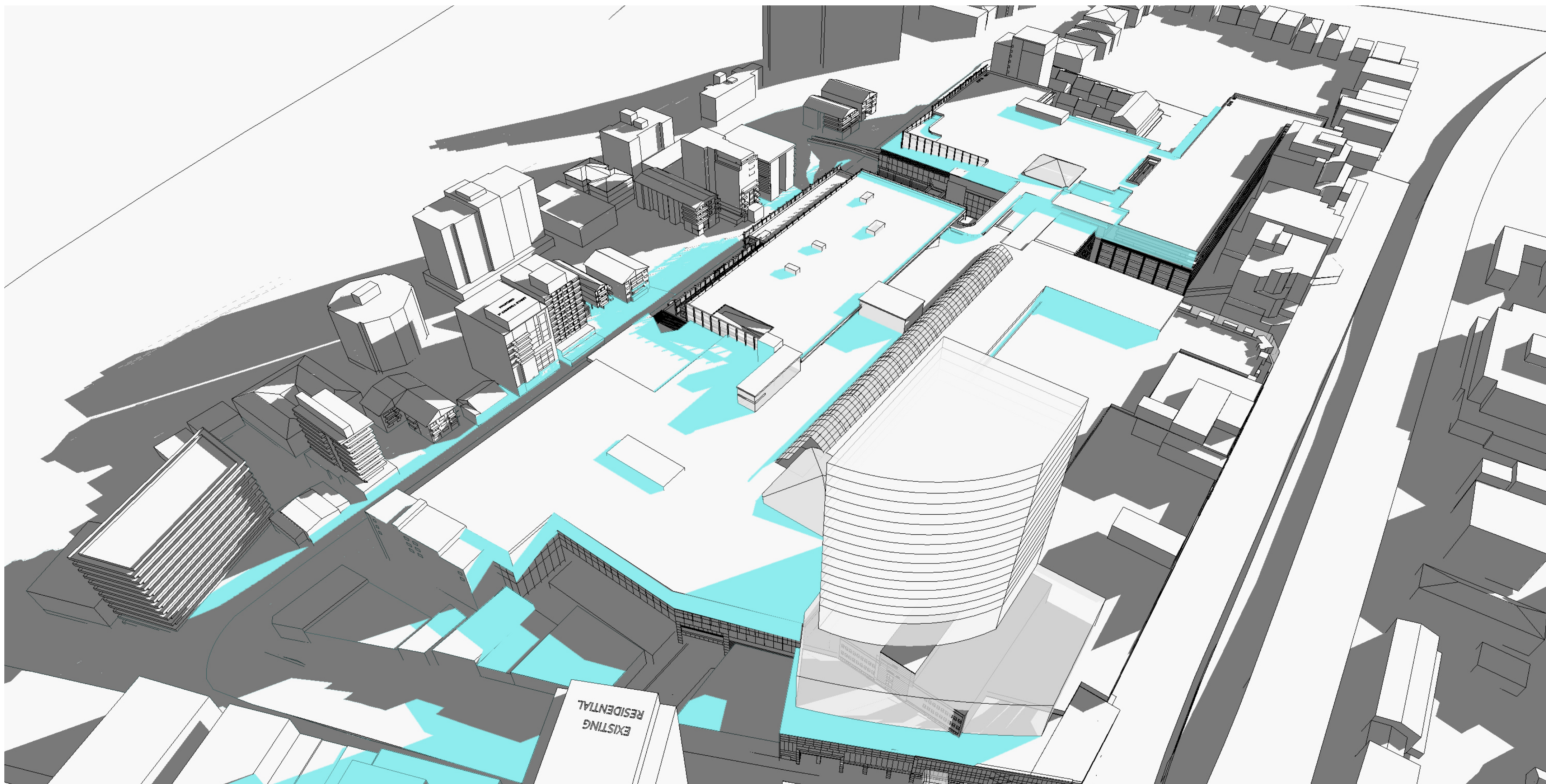
SCHEME: PA-2012-SCH11-Y3

DATE: NOVEMBER 2012

SCALE: NTS

JOB NO: D6727

REV: C



JUNE 22 - 3:00 PM



EXISTING SHADOW



PROPOSED ADDITIONAL SHADOW

Westfield

GIC

Westfield
RETAIL TRUST

WESTFIELD PARRAMATTA PART 3A
Shadow Analysis - Additional Shadow by Proposed Building

SCHEME: PA-2012-SCH11-Y3

DATE: NOVEMBER 2012

SCALE: NTS

JOB NO: D6727

REV: C