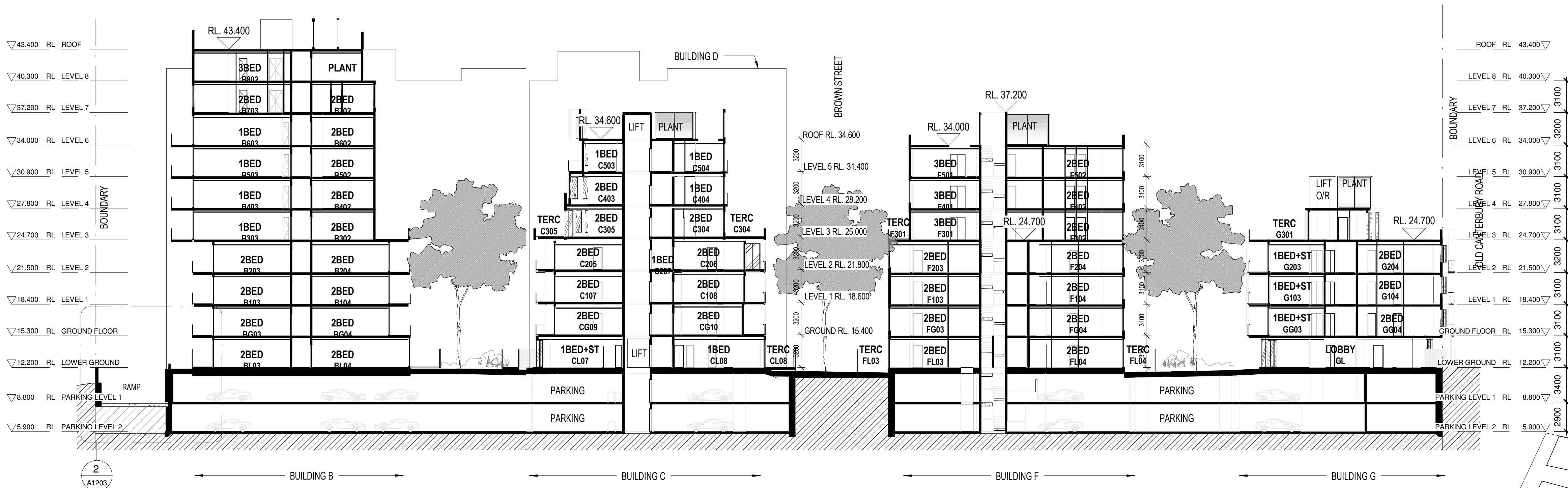
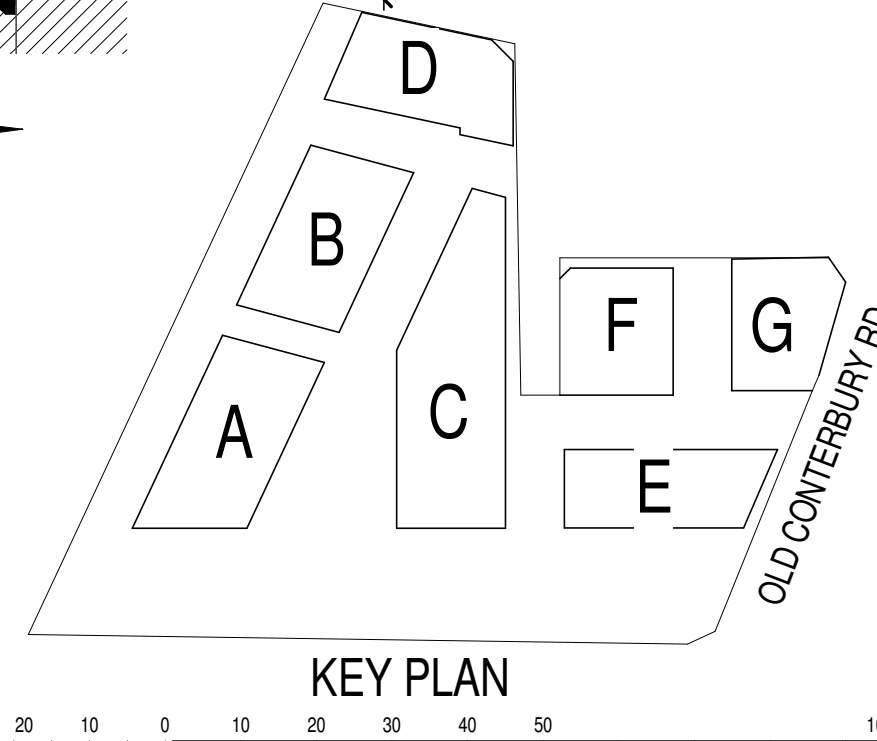


1 SECTION 1- BUILDINGS A,C,E
1 : 250



2 SECTION THROUGH RAMP AND BUILDING B
1 : 250

3 SECTION 2 - BUILDINGS C,F,G
1 : 250



GENERAL NOTES:

THIS DRAWING IS THE EXCLUSIVE PROPERTY OF MERITON APARTMENTS PTY. LTD. AND THE REPRODUCTION OF ANY PART WITHOUT THE PRIOR WRITTEN CONSENT OF MERITON APARTMENTS PTY. LTD. IS A VIOLATION OF APPLICABLE LAWS. IN NO EVENT SHALL MERITON APARTMENTS PTY. LTD. BE HELD LIABLE FOR SPECIAL COLLATERAL, INCIDENTAL OR CONSEQUENTIAL LIABILITY IN CONNECTION WITH THE USE OF THIS DIGITAL DATA ONCE RELEASED FROM THE MERITON APARTMENTS PTY. LTD. OFFICES. THIS DRAWING IS TO BE READ AND UNDERSTOOD IN CONJUNCTION WITH THE STRUCTURAL, MECHANICAL, ELECTRICAL AND / OR ANY OTHER CONSULTANTS DOCUMENTATION AS MAY BE APPLICABLE TO THE PROJECT PRIOR TO THE START OF ANY WORKS AND FOR ITS DURATION.

NOTE FOR BRICKWORK:

- ELECTRICAL CUPBOARDS ON RESIDENTIAL FLOORS ARE HOLLOW CORE DOORS LINED ON INSIDE FACE WITH 13mm FIRE GRADE PLASTERBOARD WITH A PERIMETER SMOKE SEAL.

F.R.L. FOR WALLS

PARKING LEVELS:

- LIFT SHAFT 240/120/120
- FIRE STAIRS -120/120
- VENTILATION & GARBAGE SHAFTS -120/120
- MAIN GARBAGE ROOM DOOR -120/30
- FIRE STAIR DOORS -60/30

COMMERCIAL & RETAIL LEVELS:

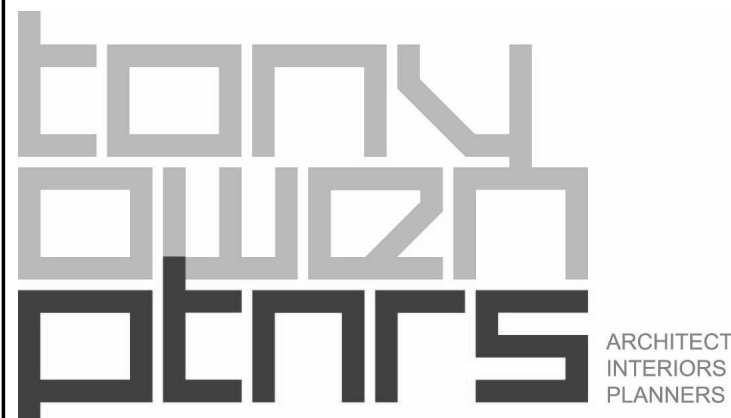
- LIFT SHAFT 180/120/120
- FIRE STAIRS -120/120
- VENTILATION & GARBAGE SHAFTS -120/120
- FIRE STAIR DOORS -60/30

RESIDENTIAL LEVELS:

- LIFT SHAFT 90/90/90
- FIRE STAIRS -90/90
- VENTILATION & GARBAGE SHAFTS -90/90
- FIRE STAIR DOORS -60/30
- GARBAGE ROOM DOORS -60/30
- FIRE STAIR DOORS -60/30
- APARTMENT DIVIDING WALLS & WALLS BOUNDING PUBLIC AREAS AND CORRIDORS -60/60

N.B: ALL F.R.L.'S RELATE TO NON-LOADBEARING CONSTRUCTION AS APPLICABLE. CODE DEFINITION (STRUCTURAL ADEQUACY/INTEGRITY/INSULATION)

ISSUE	DATE	DEVELOPMENT APPLICATION	REVISION	BY
-------	------	-------------------------	----------	----



Level 11, 528 Kent Street, Sydney NSW 2000
Tel: (02) 9287 2888 Fax: (02) 9287 2777 Email: r@design.meriton.com.au Internet: http://www.meriton.com.au

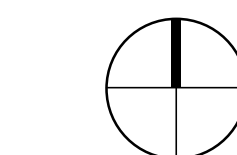
PROJECT:
LEWISHAM
78-90 OLD CANTERBURY ROAD,
LEWISHAM.

DRAWING TITLE:

SECTIONS

DATE:	13 DEC 2012	SCALE:	1 : 250	DRAWING No:	A1200	REV:	A
DRAWN BY:	Author	PROJECT NO:	884				

DO NOT SCALE
USE FIGURED DIMENSIONS AT ALL TIMES. IF IN DOUBT CHECK WITH MERITON APARTMENTS PTY. LTD. CONTRACTORS TO CHECK AND VERIFY ALL LEVELS, DATUMS AND DIMENSIONS ON SITE AND SHALL REPORT ANY DISCREPANCIES OR OMISSIONS TO MERITON APARTMENTS PTY. LTD. PRIOR TO COMMENCEMENT OF WORK AND DURING THE CONSTRUCTION PHASE.



DA ISSUE

CAD FILE: 18/12/2012 9:02:11 AM
D:\Users\Cad26\REVIT LOCAL\884-Lewisham_cad26.rvt

THIS DRAWING IS THE EXCLUSIVE PROPERTY OF MERITON APARTMENTS PTY. LTD. AND THE REPRODUCTION OF ANY PART WITHOUT THE PRIOR WRITTEN CONSENT OF MERITON

APARTMENTS PTY. LTD. IS A VIOLATION OF APPLICABLE LAWS.

IN NO EVENT SHALL MERITON APARTMENTS PTY. LTD. BE HELD LIABLE FOR SPECIAL, COLLATERAL, INCIDENTAL OR CONSEQUENTIAL LIABILITY IN CONNECTION WITH THE USE OF THIS DIGITAL DATA ONCE RELEASED FROM THE MERITON APARTMENTS PTY. LTD. OFFICES.

THIS DRAWING IS TO BE READ AND UNDERSTOOD IN CONJUNCTION WITH THE STRUCTURAL, MECHANICAL, ELECTRICAL AND/ OR ANY OTHER CONSULTANTS' DOCUMENTATION AS MAY BE APPLICABLE TO THE PROJECT PRIOR TO THE START OF ANY WORKS AND FOR ITS DURATION.

- ELECTRICAL CUPBOARDS ON RESIDENTIAL FLOORS ARE HOLLOW CORE DOORS LINED ON INSIDE FACE WITH 13mm FIRE GRADE PLASTERBOARD WITH A PERIMETER SMOKE SEAL

- LIFT SHAFT _ 240/120/120
- FIRE STAIRS _ -/120/120
- VENTILATION & GARBAGE SHAFTS _ -/120/120
- MAIN GARBAGE ROOM DOOR _ -/120/30
- FIRE STAIR DOORS _ -/60/30

- LIFT SHAFT 180/120/120
- FIRE STAIRS -/120/120
- VENTILATION & GARBAGE SHAFTS -/120/120
- FIRE STAIR DOORS -/60/30

- LIFT SHAFT _ 90/90/90
- FIRE STAIRS _ /90/90
- VENTILATION & GARBAGE SHAFTS _ /90/90
- FIRE STAIR DOORS _ /60/30
- GARBAGE ROOM DOORS _ /60/30
- FIRE STAIR DOORS _ /60/30
- APARTMENT DIVIDING WALLS & WALLS BOUN

N.B: ALL F.R.L'S RELATE TO NON-LOADBEARING CONSTRUCTION AS APPLICABLE. CODE DEFINITION (STRUCTURAL ADEQUACY/INTEGRITY/INSULATION)

