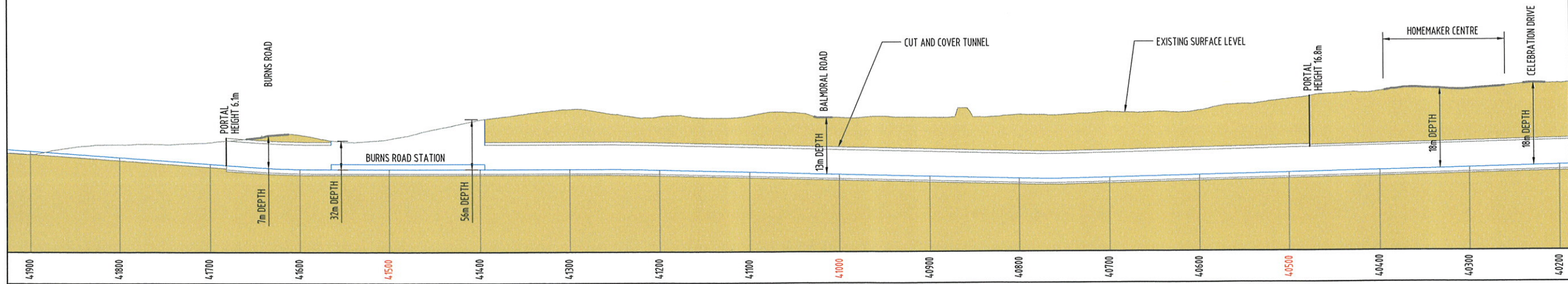


LEGEND

- NWRL RAIL CORRIDOR
- APPROVED EPPING TO PARRAMATTA RAIL CORRIDOR

PLAN

SCALE 1:5000 AT A3



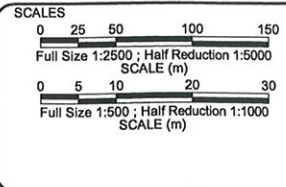
LONG SECTION

INDICATIVE ONLY AND SUBJECT TO DETAILED DESIGN
SCALE 1:5000 H SCALE 1:1000 V AT A3

PRELIMINARY ISSUE
NOT FOR CONSTRUCTION

REV	DATE	DESCRIPTION	DRAWN	CHECK	DESIGN	VERIFY
A	02.05.07	ISSUED FOR INFORMATION	CZ		JS	

© Parsons Brinckerhoff Australia Pty Limited ("PB")
Copyright in the drawings, information and data recorded in
this document ("the information") is the property of PB. This
document and the information are solely for the use of the
authorised recipient and this document may not be used,
copied or reproduced in whole or part for any purpose other
than that for which it was supplied by PB. PB makes no
representation, undertakes no duty and accepts no
responsibility to any third party who may use or rely upon this
document or the information.
NCSI certified Quality System to ISO 9001

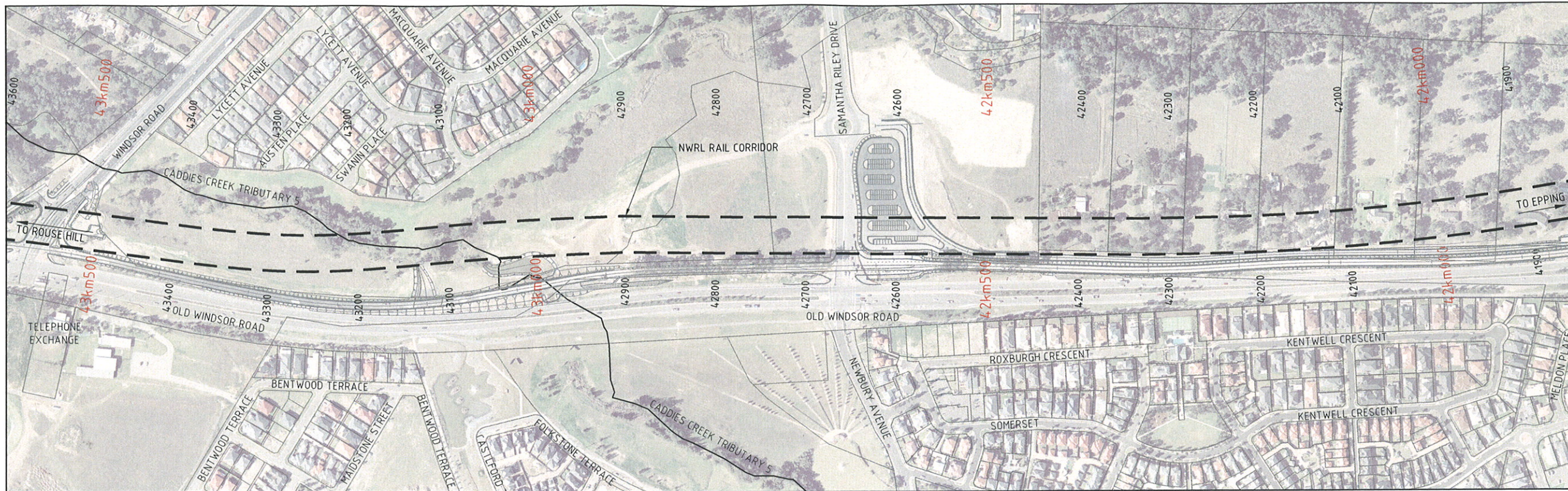


A1 ORIGINAL
DO NOT SCALE THIS DRAWING - USE FIGURED DIMENSIONS ONLY
VERIFY ALL DIMENSIONS ON SITE
APPROVED FOR AND ON BEHALF OF
PARSONS BRINCKERHOFF AUSTRALIA PTY LIMITED
SIGNED
DATE

PB PARSONS BRINCKERHOFF
Adelaide, Bendigo, Brisbane, Melbourne, Newcastle, Perth, Singleton, Sunshine Coast and Sydney
Level 27, Ernst & Young Centre
680 George Street
Sydney NSW 2000
GPO BOX 5394
Sydney NSW 2001
Australia
Telephone +61 2 9272 5100
Facsimile +61 2 9272 5101
Email: sydney@pb.com.au

CLIENT
Transport Infrastructure Development Corporation

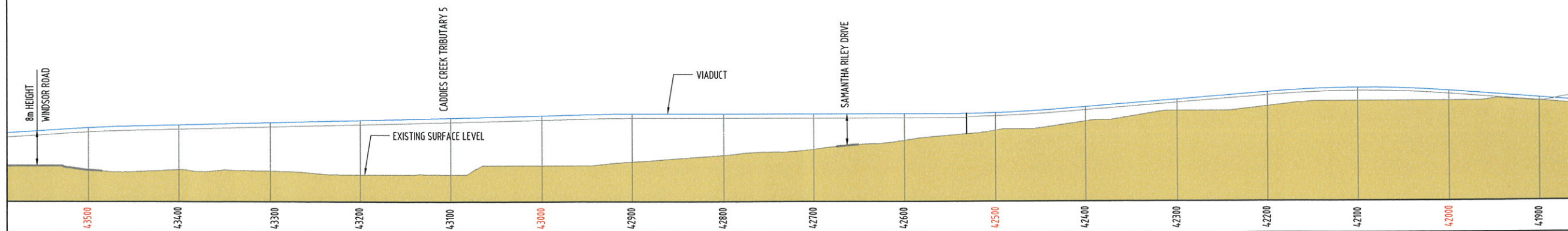
PROJECT			
NORTH WEST RAIL LINK			
NWRL ALIGNMENT CORRIDOR			
CH 40km300 TO CH 41km900			
SHEET 11 OF 14			
PROJECT No.	DISCIPLINE	NUMBER	REV.
2152063A	- TRA -	S131	A

**LEGEND**

- NWRL RAIL CORRIDOR
— APPROVED EPPING TO PARRAMATTA RAIL CORRIDOR

PLAN

SCALE 1:5000 AT A3

**LONG SECTION**

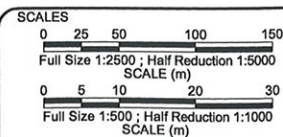
INDICATIVE ONLY AND SUBJECT TO DETAILED DESIGN
SCALE 1:5000 H SCALE 1:1000 V AT A3

PRELIMINARY ISSUE
NOT FOR CONSTRUCTION

REV	DATE	DESCRIPTION	DRAWN	CHECK	DESIGN	VERIFY
A	02.05.07	ISSUED FOR INFORMATION	CZ		JS	

© Parsons Brinckerhoff Australia Pty Limited ("PB")
Copyright in the drawings, information and data recorded in this document ("the information") is the property of PB. This document and the information are solely for the use of the authorised recipient and this document may not be used, copied or reproduced in whole or part for any purpose other than that for which it was supplied by PB. PB makes no representation, undertakes no duty and accepts no responsibility to any third party who may use or rely upon this document or the information.

NCSI certified Quality System to ISO 9001



A1 ORIGINAL
DO NOT SCALE THIS DRAWING - USE FIGURED DIMENSIONS ONLY
VERIFY ALL DIMENSIONS ON SITE

APPROVED FOR AND ON BEHALF OF
PARSONS BRINCKERHOFF AUSTRALIA PTY LIMITED

SIGNED
DATE

PB PARSONS BRINCKERHOFF

Adelaide, Bendigo, Brisbane, Melbourne, Newcastle, Perth, Singleton, Sunshine Coast and Sydney
Level 27, Ernst & Young Centre
600 George Street
Sydney NSW 2000
GPO BOX 5394
Sydney NSW 2001
Australia

ABN 80 078 004 798

Telephone +61 2 9272 5100
Facsimile +61 2 9272 5101
Email: sydney@pb.com.au

CLIENT

Transport Infrastructure Development Corporation

PROJECT			
NORTH WEST RAIL LINK			
NWRL ALIGNMENT CORRIDOR CH 41km900 TO CH 43km500 SHEET 12 OF 14			
PROJECT No.	DISCIPLINE	NUMBER	REV.
2152063A	- TRA -	S132	A