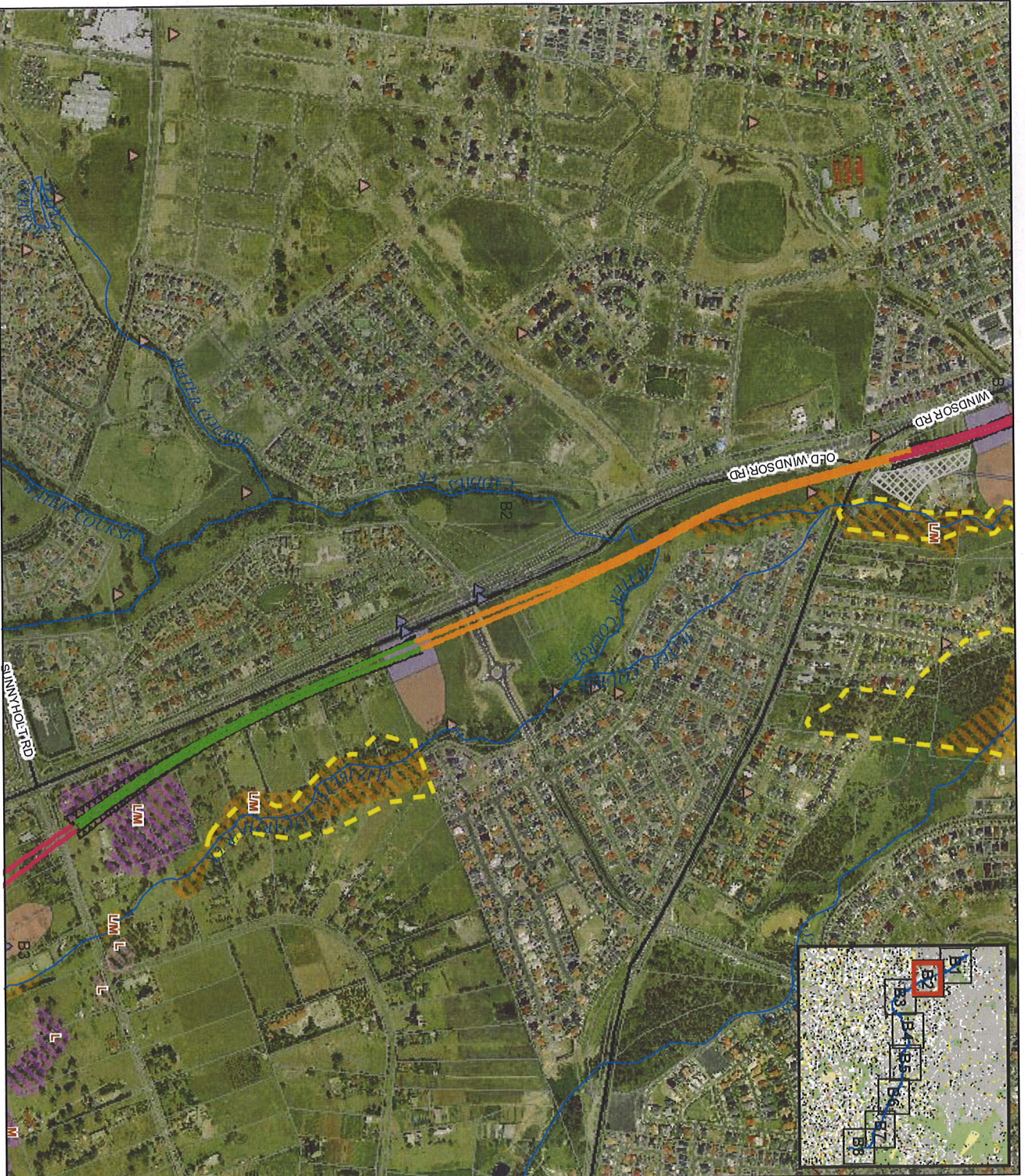


North West Rail Link

North West Rail Link

Environmental Survey

Figure B2



Legend

- Minor Roads
- Major Roads
- Existing Rail Infrastructure
- Drainage
- Station
- Bored Tunnel
- Cut or Fill
- Structure
- Cut and Cover Tunnel
- Dive Structure
- Quantification of Main North Line
- Proposed Worksites
- Fauna Habitat
- Important Fauna Habitat
- Flora
- Endangered Ecological Communities
- Blue Gum High Forest
- Sydney Turpentine-Ironbark Forest
- River-flat Eucalypt Forest on Coastal Floodplains
- Cumberland Plain Woodland NPWS & SKM (2003)
- Conservation Ranking
- L Low
- M Moderate
- LM Low/Moderate
- MH Moderate/High
- H High
- National Park
- Heritage Sites
- Non-Indigenous Heritage
- Indigenous Heritage
- Non-Indigenous Heritage
- Indigenous Heritage



Metres
0 75 150 300 450

SKM

Environmental Survey
North West Rail Link
SKM
2003