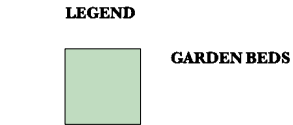
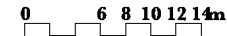
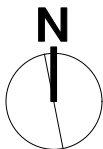


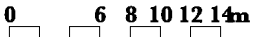
Entry Level  
Ground Floor RL 58



Hi Tech Holistic Cancer and Medical Hospital



First Floor {Dementia}  
Courtyards RL61.60



REVISION	DATE	REVISION NOTE	BY
NOTES			
Notes			

PROJECT	Life City Berkeley
ADDRESS	Warwick St. Berkeley NSW
CLIENT	Delbest PTY
DRAWING	Stage 5 Hi Tech Hospital



Nicholas Bray  
Landscapes

LANDSCAPE ARCHITECTS  
Southern Highlands Office:  
School of Arts  
471 Angles Street Moss Vale NSW  
Postal: PO Box 323 Moss Vale NSW 2577  
Telephone: 02 4869 4240  
Mobile: 0417278267  
ABN: 25001055205

Sydney Office:  
Studio 5 Level 2 118 Devonshire St  
Sunny Hills NSW 2012  
contact@nicholasbray.net.au  
www.nicholasbray.net.au

PROJECT	2012_10Life City	DWG STATUS	H
DWG DATE	27.11.12	CAD FILE NAME	NBC_2012_10LifeCity_MasterPlan.
PLOT DATE		DWG #	REVISION #
ORIGINAL SHEET SIZE	A3		
SCALE @ A1			
DRAWN	PS	CHKD	NB
			OF 1