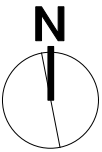
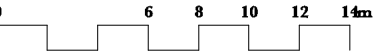


Medical Centre & Day surgery



LEGEND

- GARDEN BEDS
- NEW LAWN AREA
- GRAVEL AREAS
- RETAINER WALLS



- SEATING AREAS UNDER CANOPY OF TREES
- PAVED FORECOURT OUTSIDE CONVENIENCE STORE
- DISABLED RAMP
- MAIN ENTRY

REVISION	DATE	REVISION NOTE	BY
NOTES			
Notes			

PROJECT
Life City Berkeley

ADDRESS
Warwick St. Berkeley NSW

CLIENT
Delbest PTY

DRAWING
S1 MedicalCentre,Day Surgery,Respite Care

 **Nicholas Bray**
Landscapes

LANDSCAPE ARCHITECTS
Southern Highlands Office:
471 Angles Street Moss Vale NSW
Postal: PO Box 323 Moss Vale NSW 2577
Telephone: 02 4880 4240
Mobile: 04 17276207
ABN: 25001055205

Sydney Office:
Studio 51 level 2 118 Devonshire St
Sunny Hills NSW 2012
contact@nicholasbray.net.au
www.nicholasbray.net.au

PROJECT	2012_10Life City	DWG STATUS	H
DWG DATE	27.11.12	CANONICAL	2012_10LifeCity_MasterPlan
PLOT DATE		DWG #	REVISION
ORIGINAL SHEET SIZE	A3		
SCALE @A1			
DRAWN	PS	CHKD	NB
		OF	1