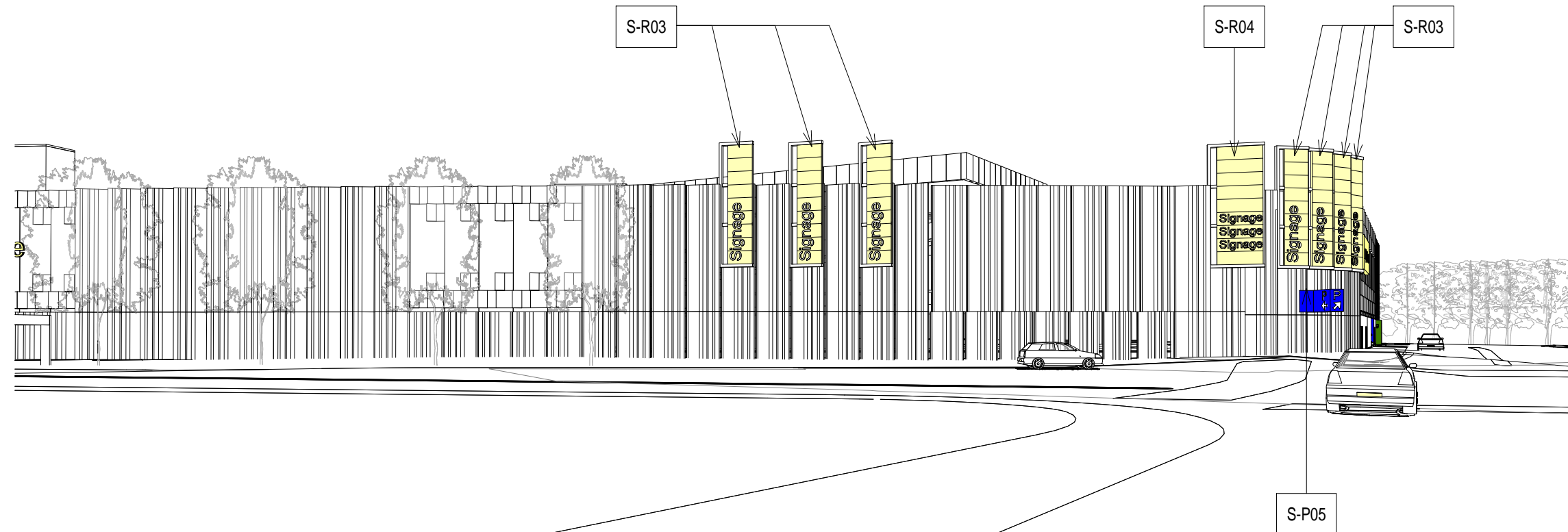
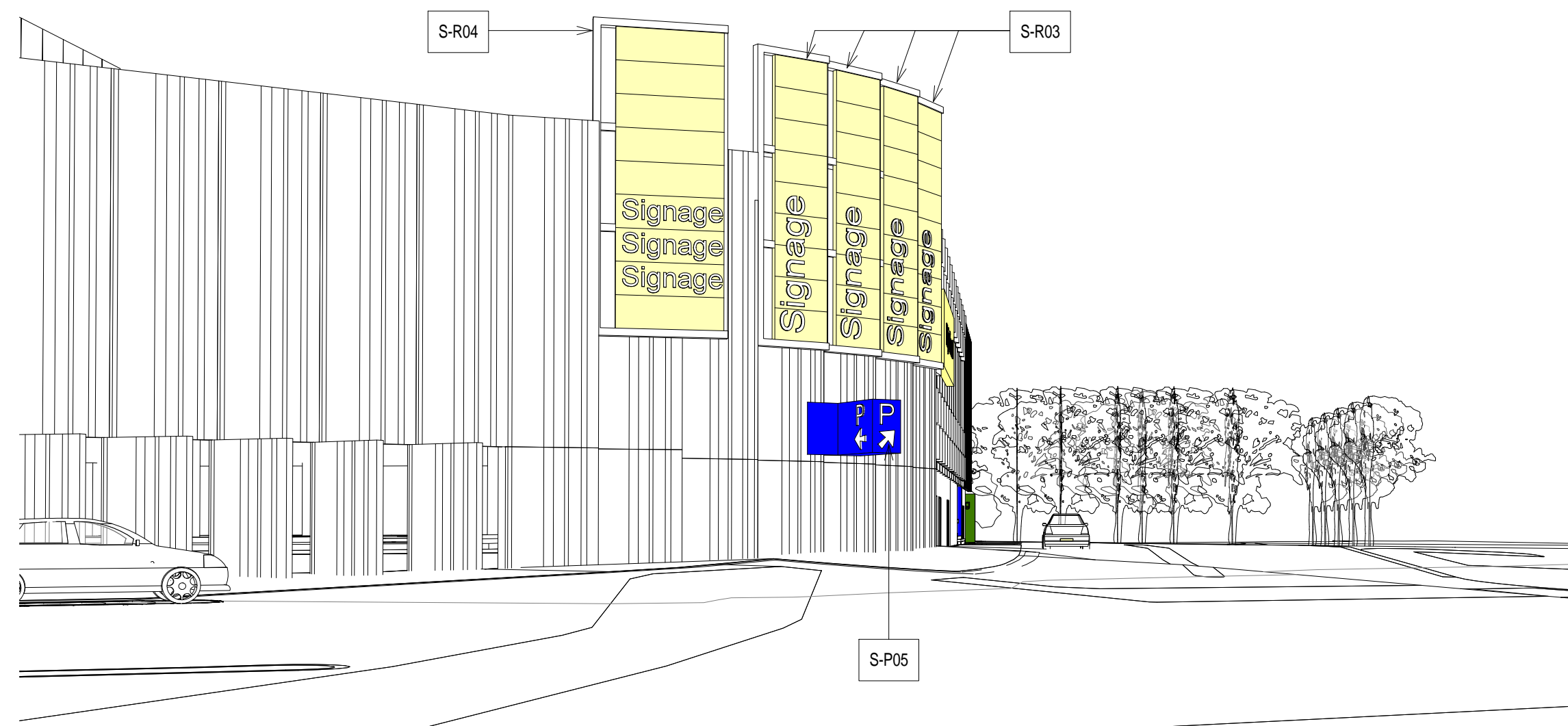


1 VEHICLE APPROACH WRN 1



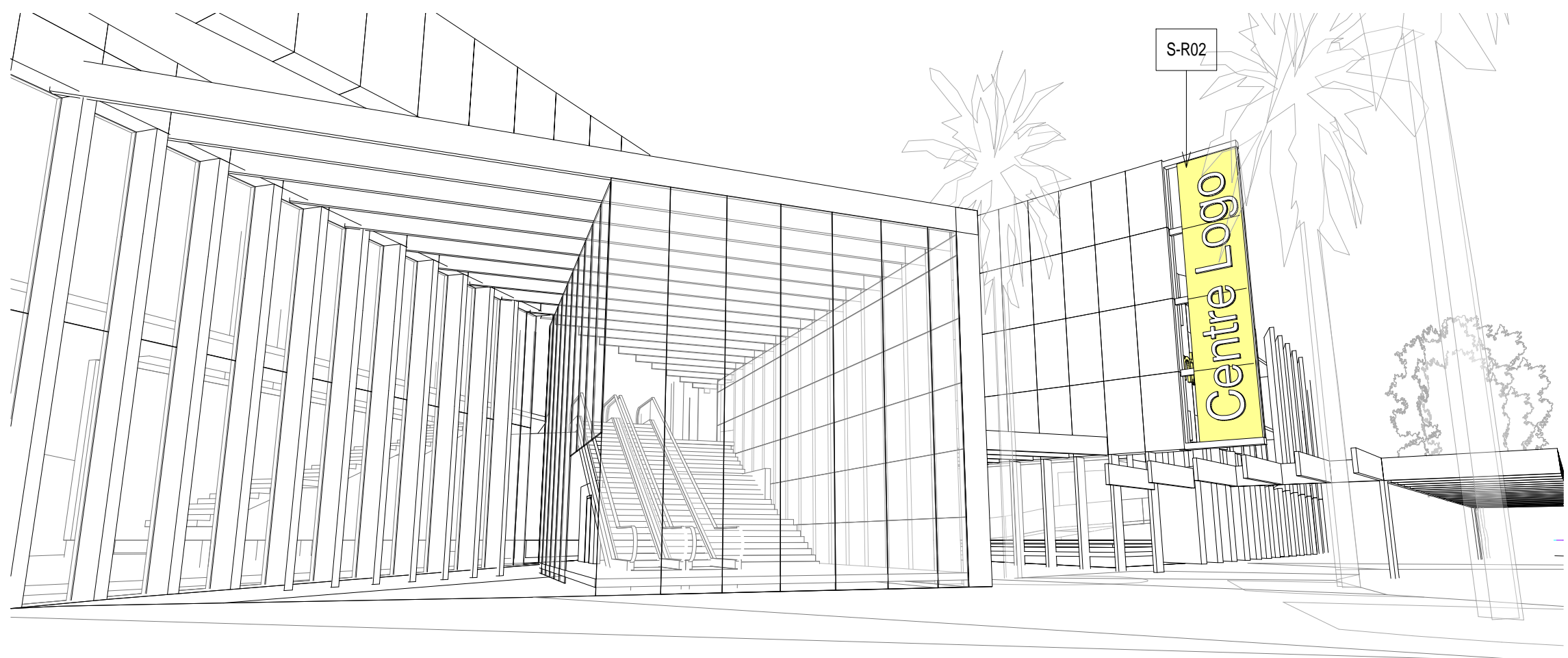
2 VEHICLE APPROACH WRN 2



3 VEHICLE APPROACH WRN 3



4 VEHICLE APPROACH WRN 4

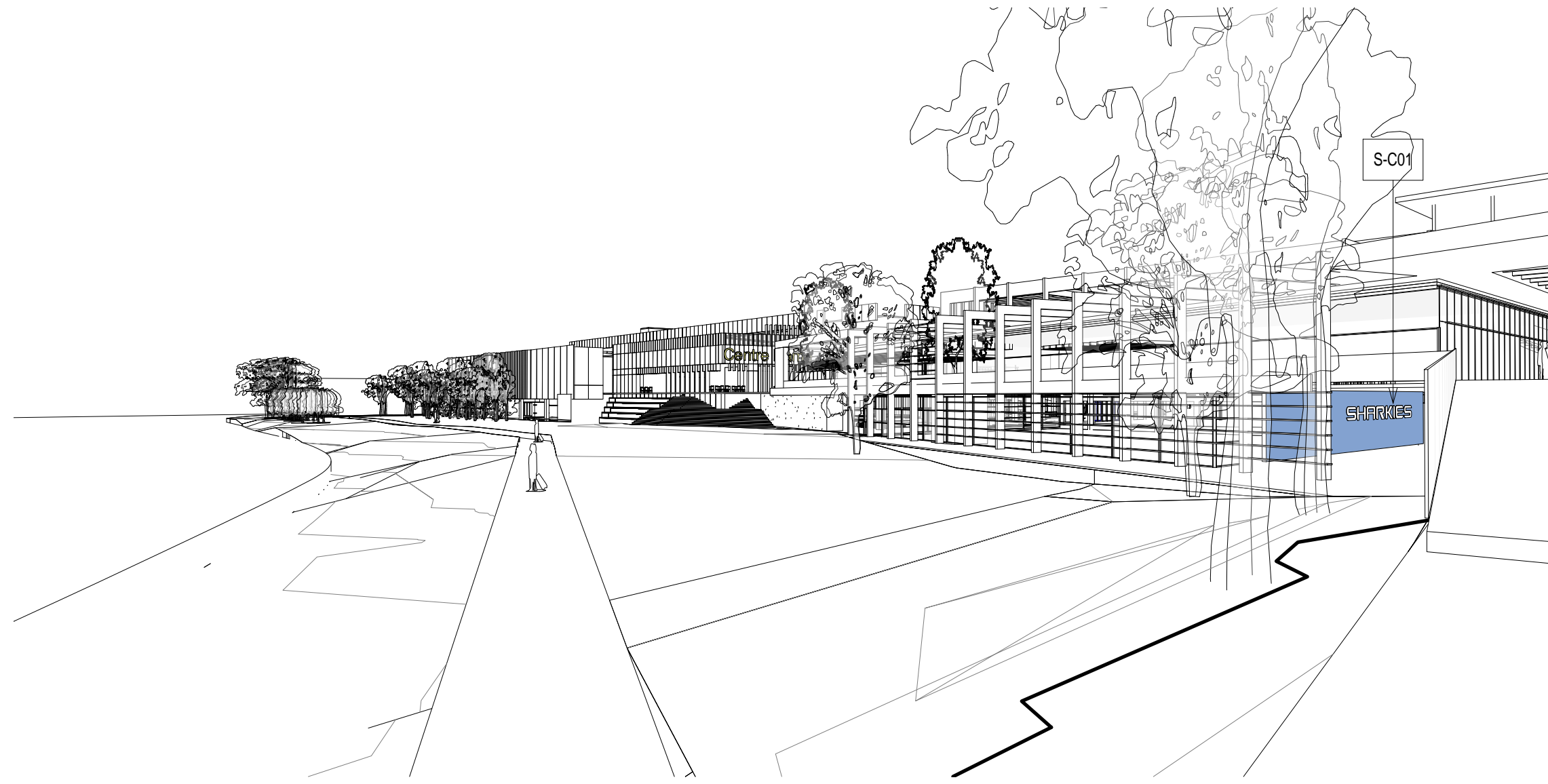


5 PEDESTRIAN APPROACH CCDB1

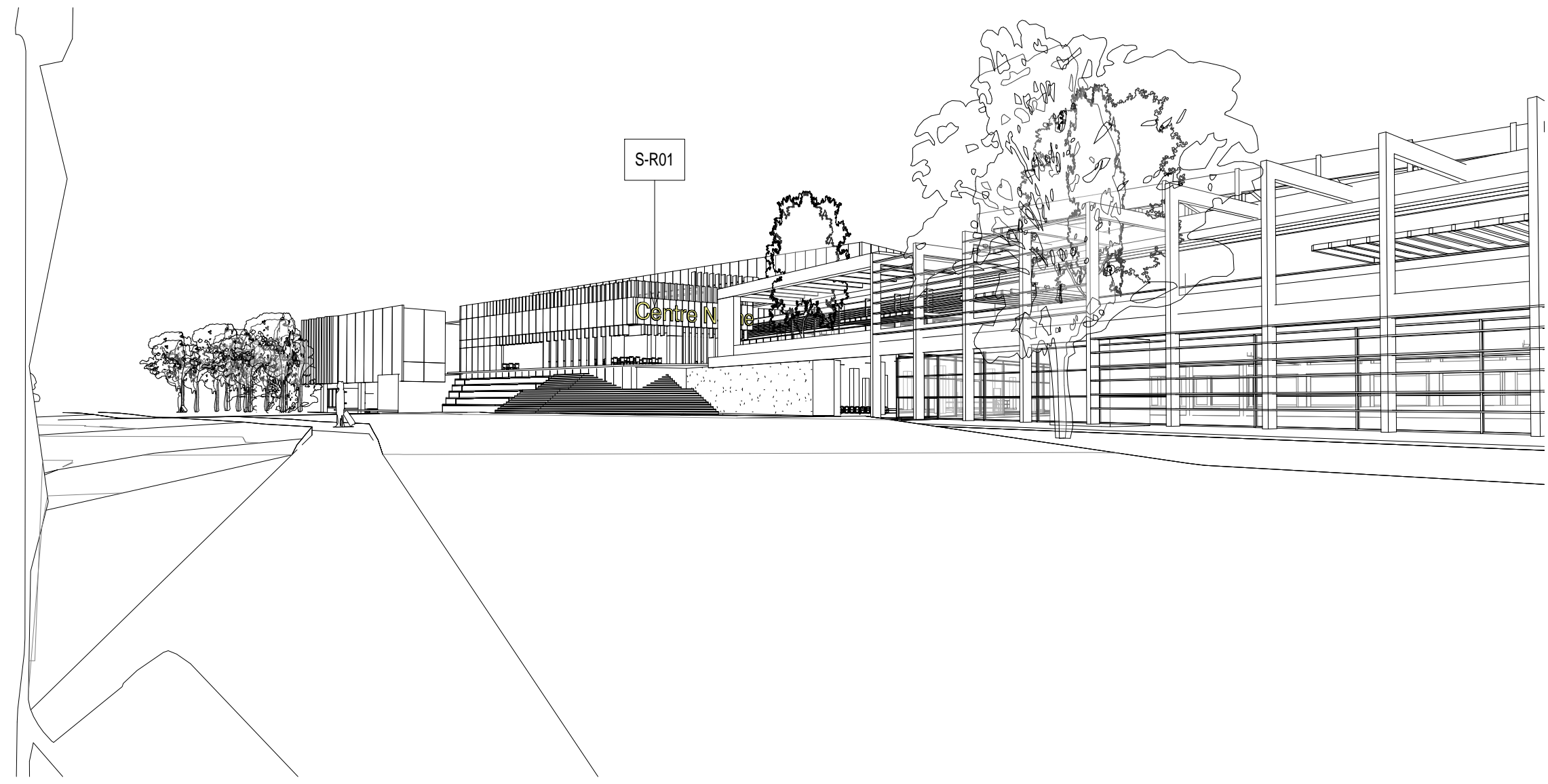


6 PEDESTRIAN APPROACH CCDB2

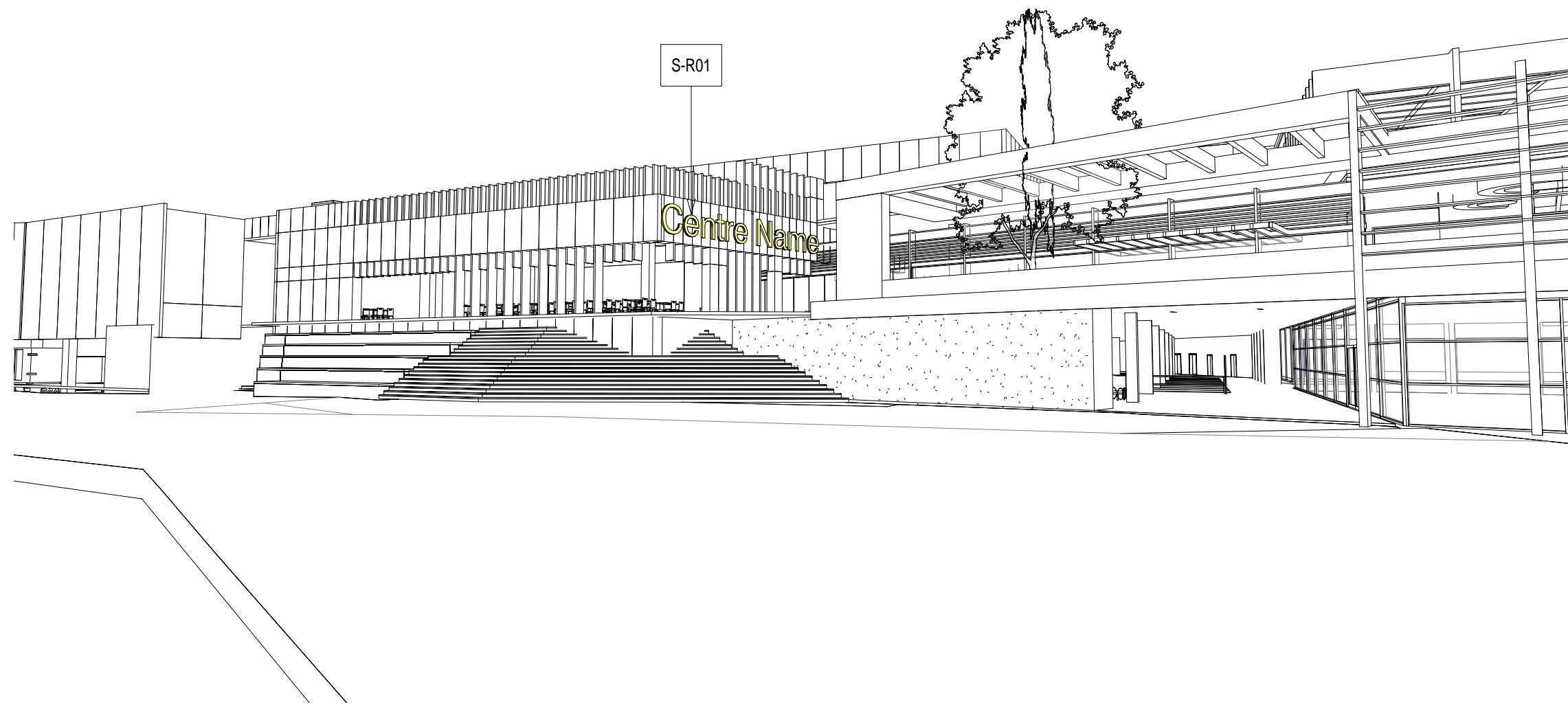
+



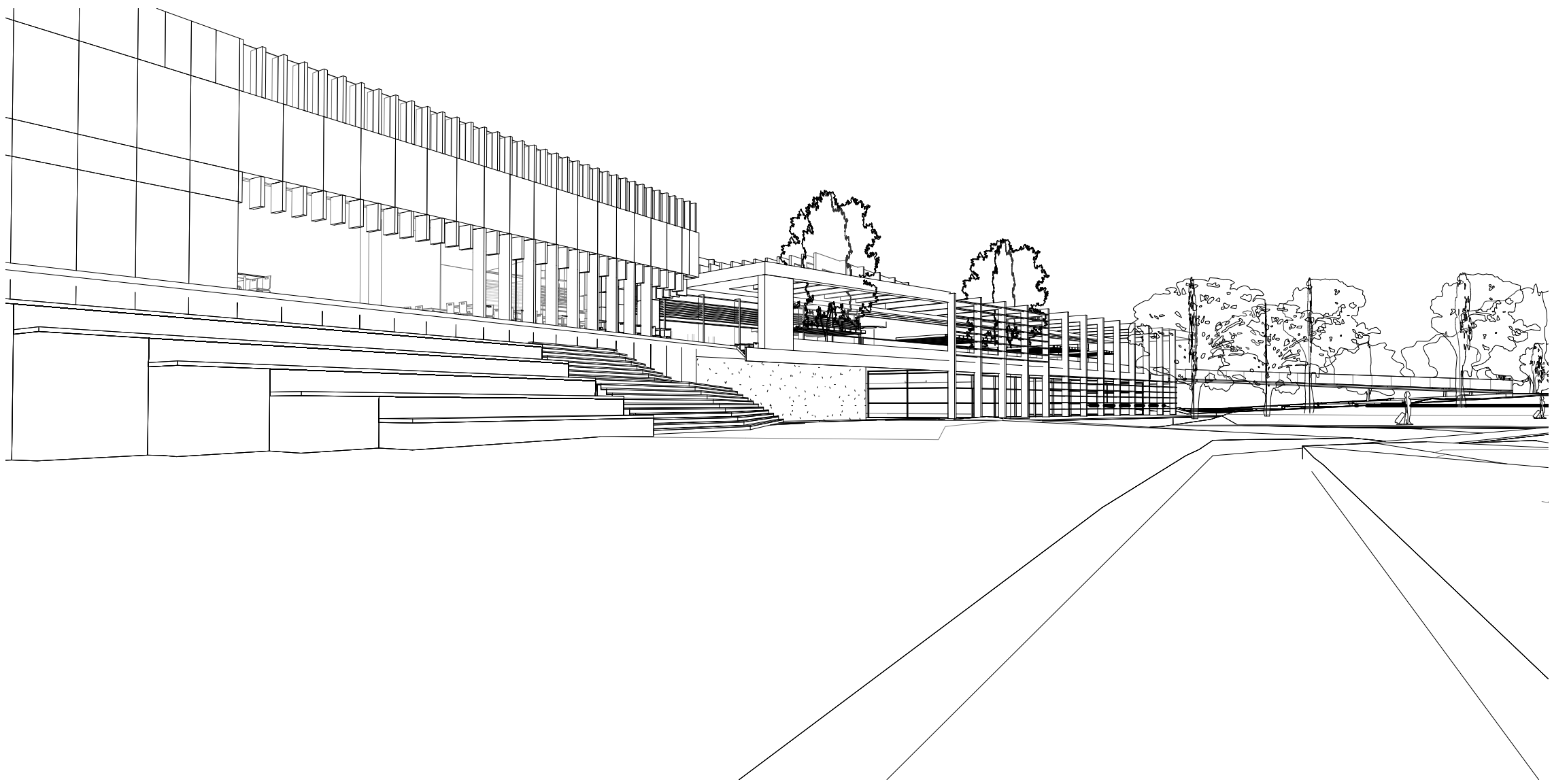
1 PEDESTRIAN APPROACH WWB 1



2 PEDESTRIAN APPROACH WWB 2



3 PEDESTRIAN APPROACH WWB 3



4 PEDESTRIAN APPROACH WWB 4

Status: FOR AUTHORITY APPROVAL

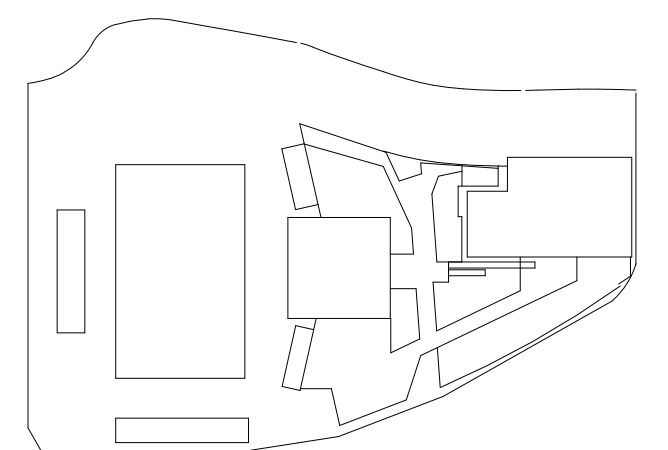
Nom. Architect Bob Perry 3935

File: R-H\2010\20100176 Woollooware Bay Town Centre\Drawings\Revit\Woollooware_Bay-Central

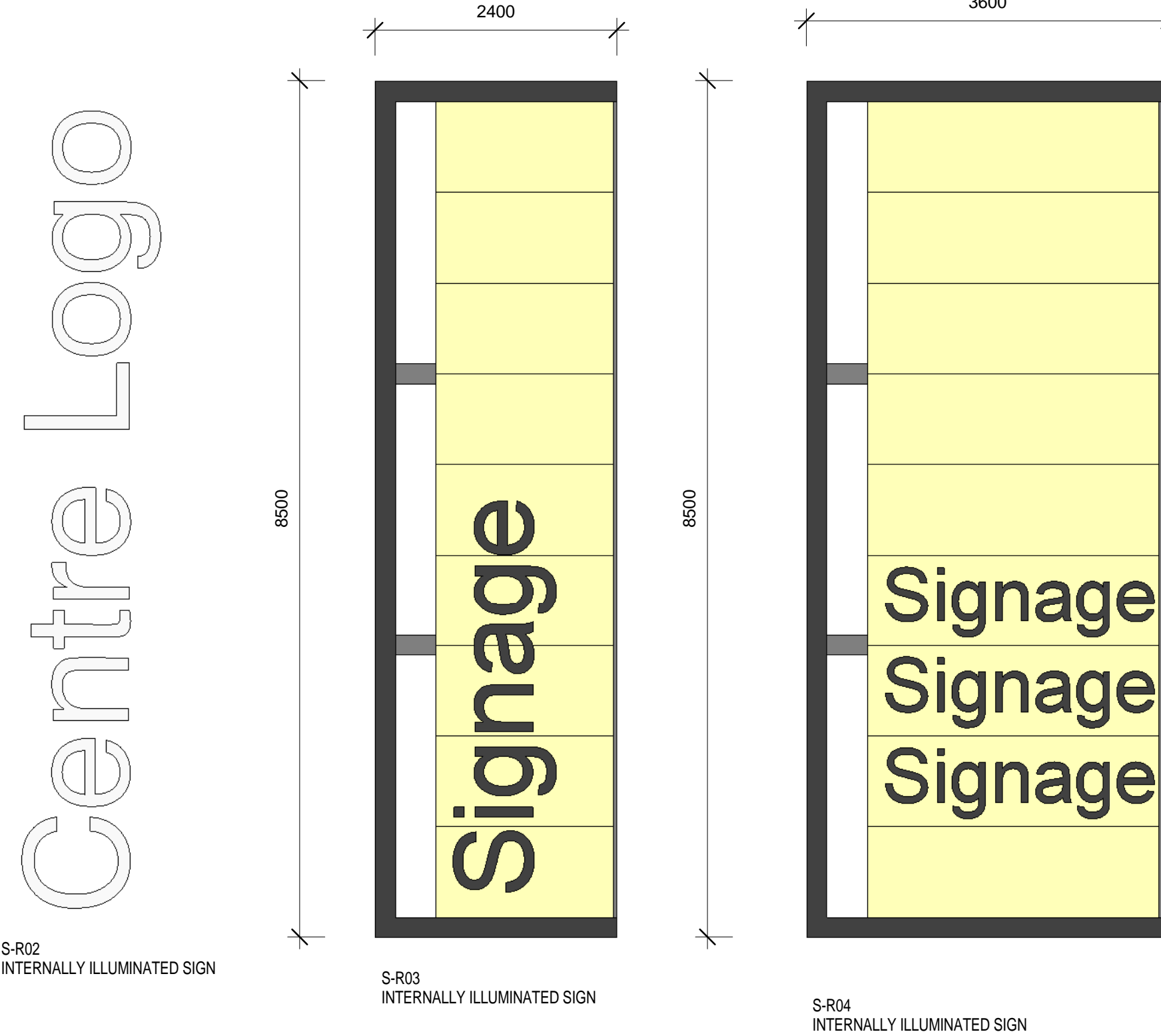
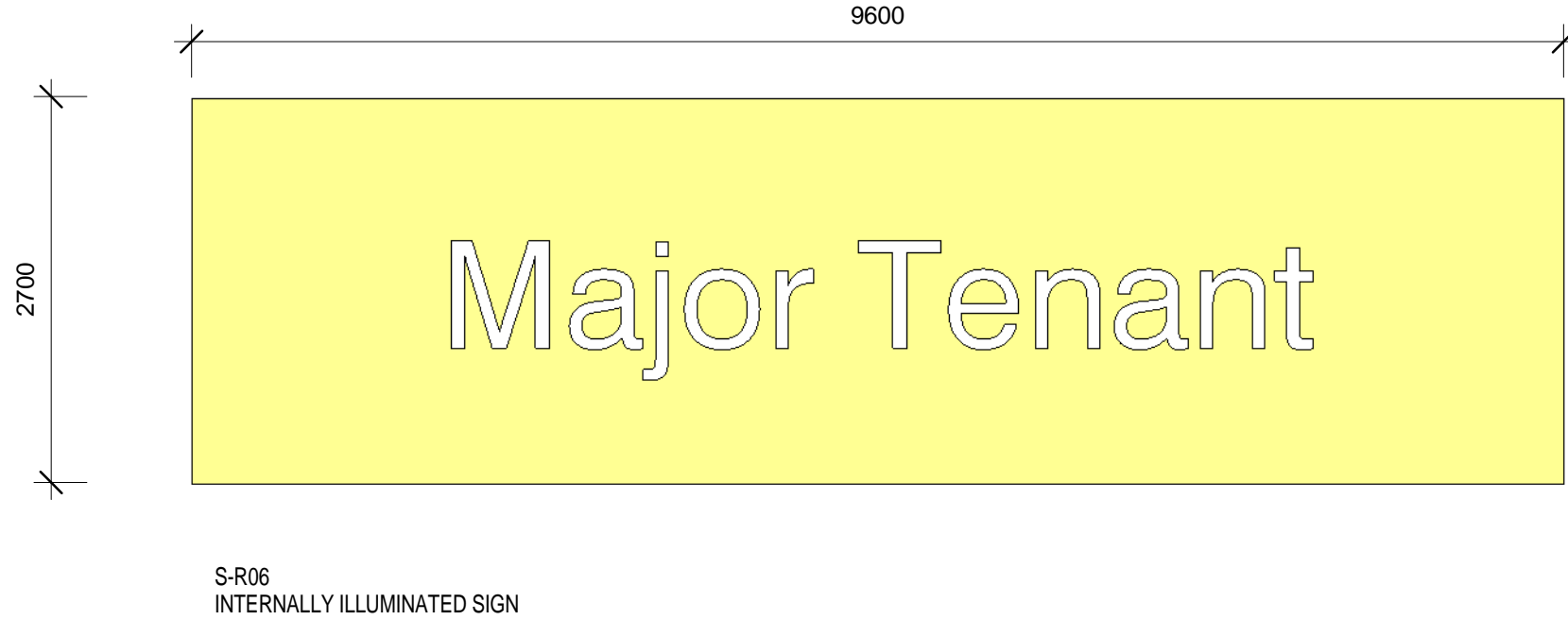
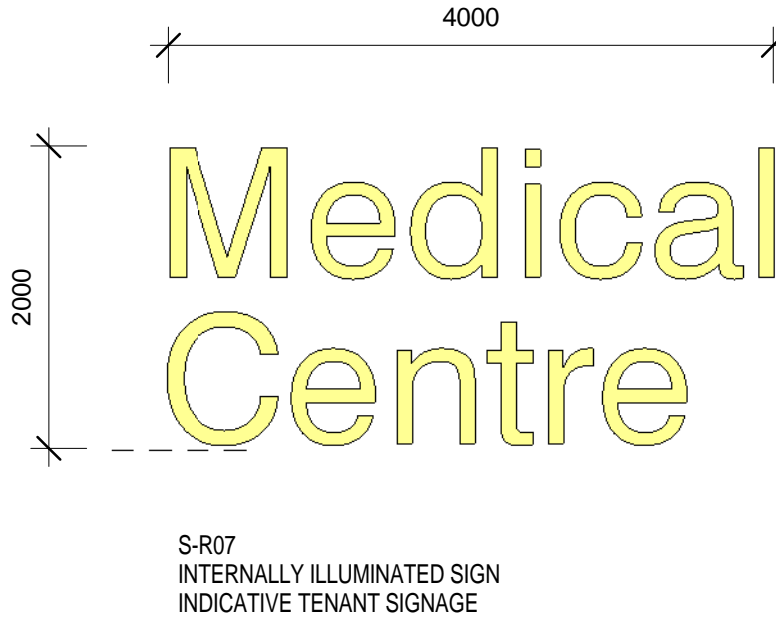
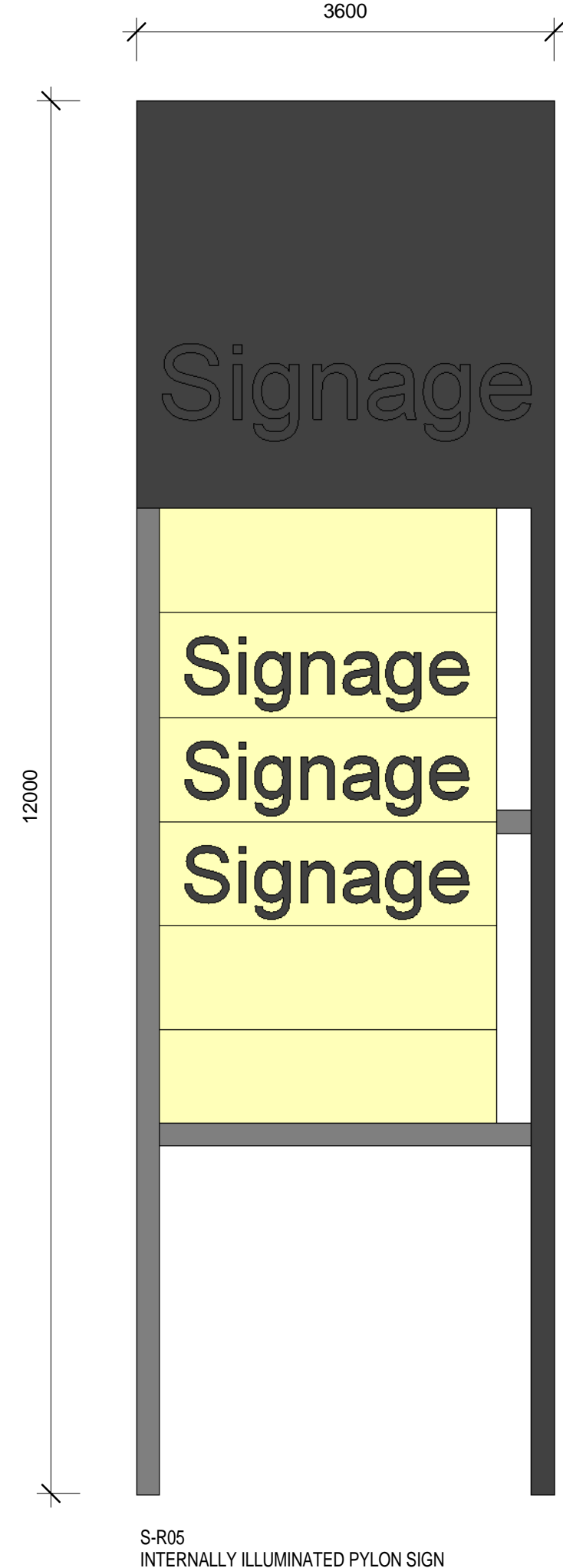
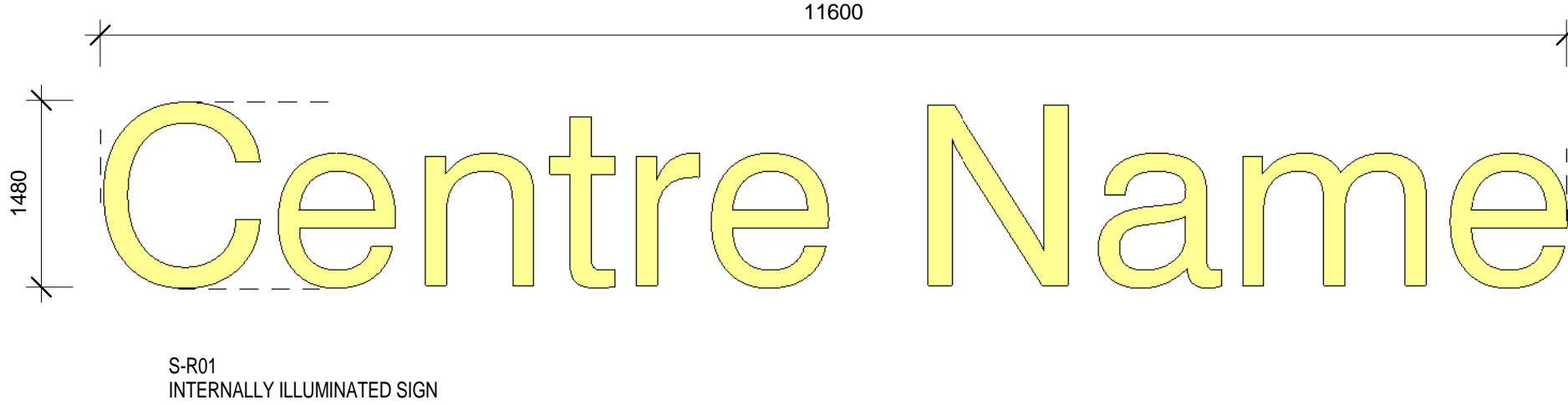
Print Date: 14/02/2013 2:49:21 PM

Rev. Description: Date:

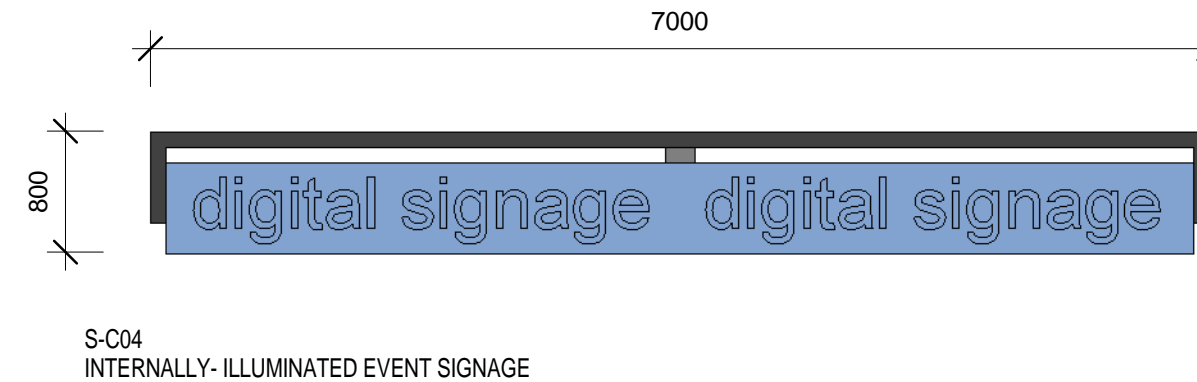
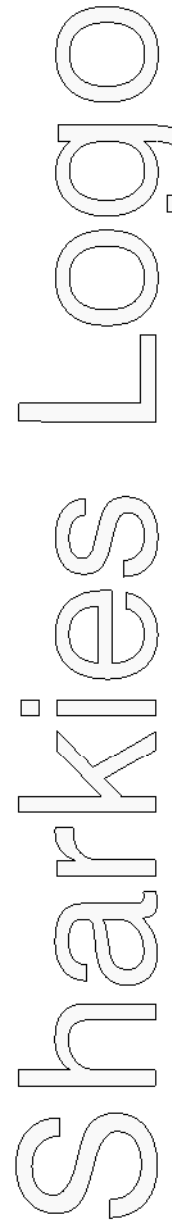
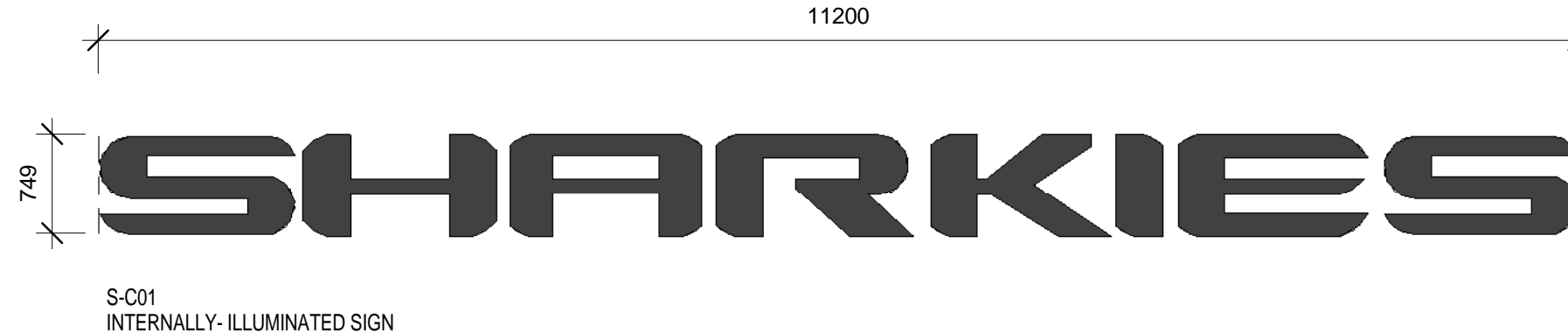
- 1 FOR AUTHORITY APPROVAL 08/02/2013
- 2 FOR AUTHORITY APPROVAL 14/02/2013



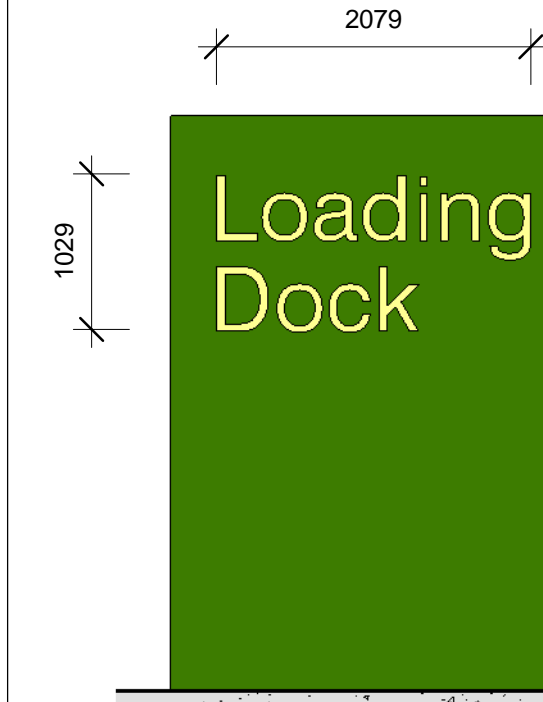
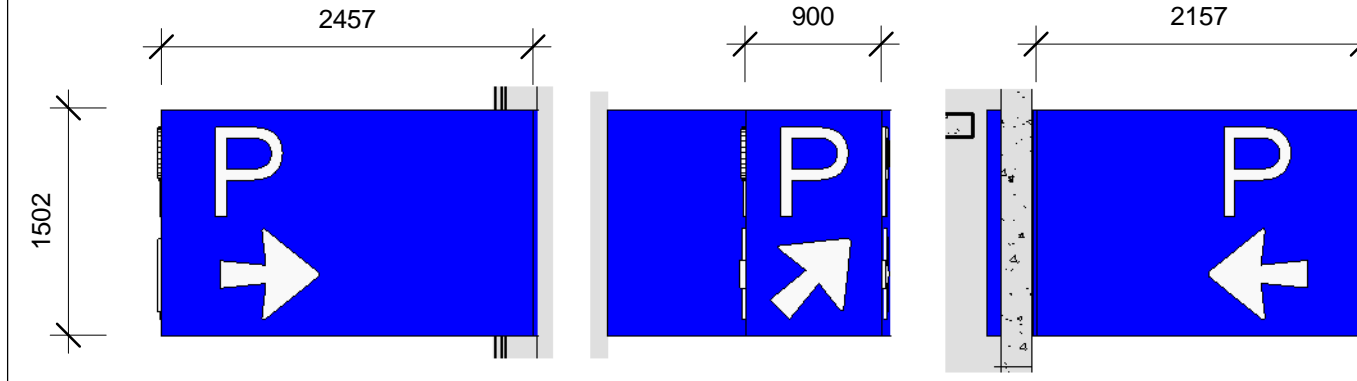
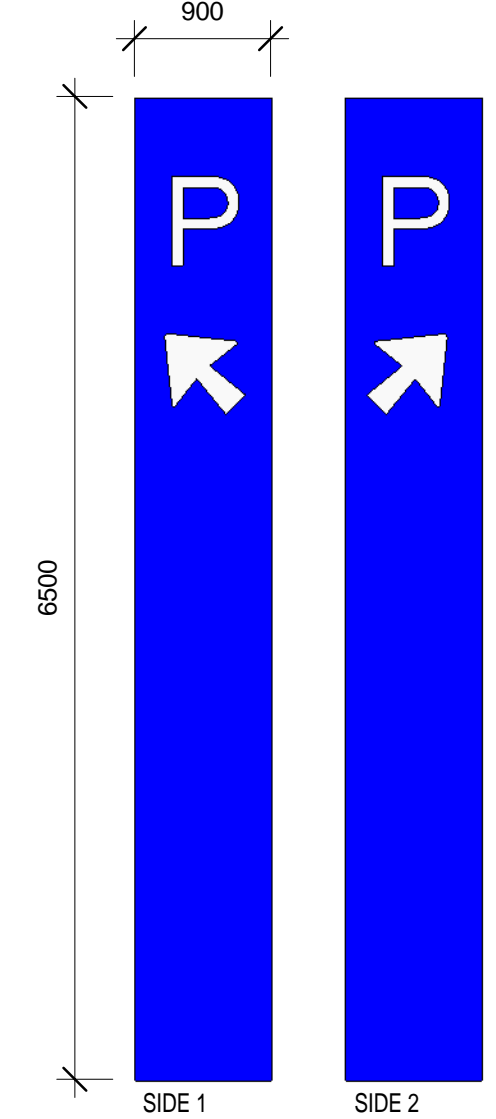
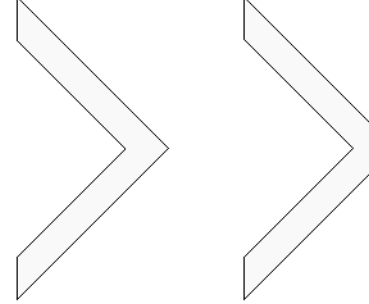
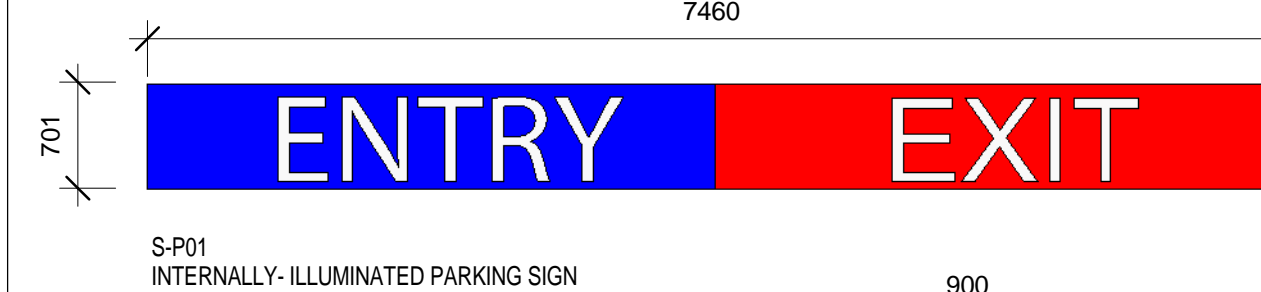
RETAIL SIGNAGE



CLUB SIGNAGE



CARPARK SIGNAGE



Status: FOR AUTHORITY APPROVAL

Nom. Architect **Bob Perry 3935**

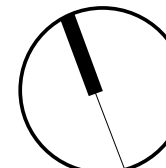
R-H:\2010\20100176 Woollooware Bay Town
File: Centre\Drawings\Revit\Woollooware_Bay-Central

Print Date: 14/02/2013 2:49:31 PM

Rev: Description: _____ Date: _____

A DRAFT - WORK IN PROGRESS 31/01/2013

1 FOR AUTHORITY APPROVAL 08/02/2013
2 FOR AUTHORITY APPROVAL 14/02/2013





Status: FOR AUTHORITY APPROVAL

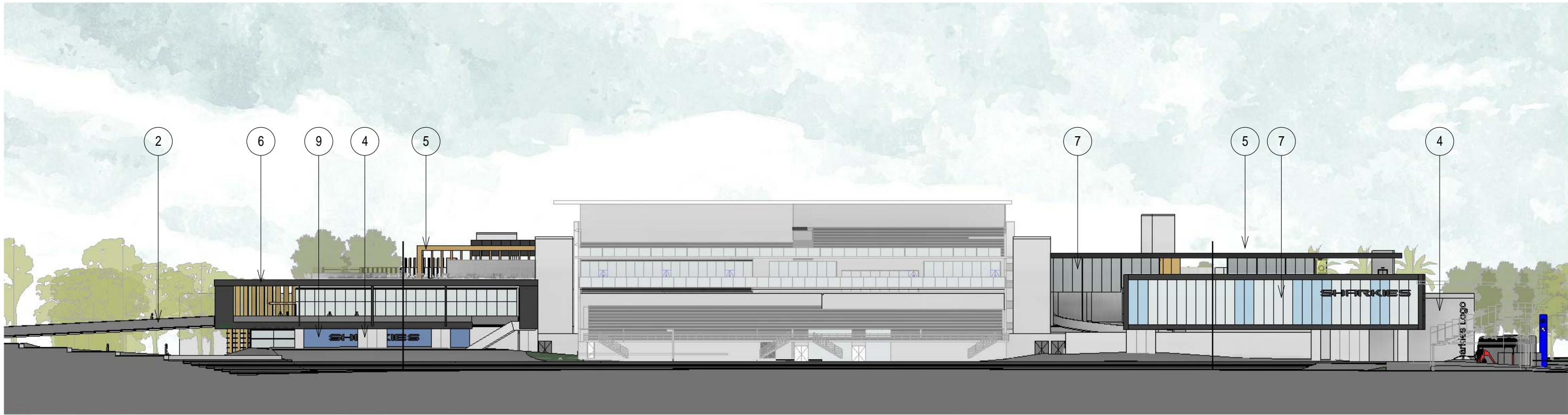
Nom. Architect Bob Perry 3935

R-H\2010\20100176 Woollooware Bay Town
Centre\Drawings\Revit\Woollooware_Bay-Central

Print Date: 14/02/2013 4:44:51 PM

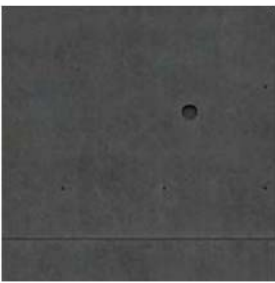
Rev. Description: Date:

A	DRAFT FOR REVIEW	25/01/2013
B	DRAFT - WORK IN PROGRESS	31/01/2013
1	FOR AUTHORITY APPROVAL	08/02/2013
2	FOR AUTHORITY APPROVAL	14/02/2013



1. Arcade Entry Points - A combination Natural Coloured Stone Pavers

2. Food Court Area External/ Eat street - Precast Concrete Panels/Pavers



3. Decorative Precast Panels - Stained/Painted and textured with perforations, recesses and cast in timber elements.



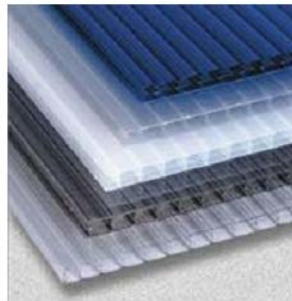
4. Simple Precast Panels - Exposed/Natural Grey Concrete Finish



5. Composite Panel Cladding - Timber Finish, facade articulated with vertical joints, grooves and louvers. [Alpolic/Alucobond/Vitrabond]



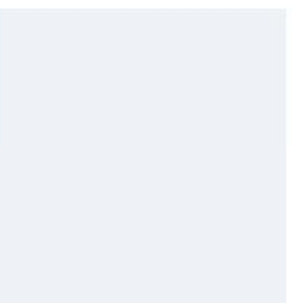
6. Composite Panel Cladding - Metallic Dark Grey/Zinc Finish [Alpolic/Alucobond/Vitrabond]



7. Polycarbonate Panel Cladding - Various transparencies with colours ranging from blues, light greys to translucent white panels.



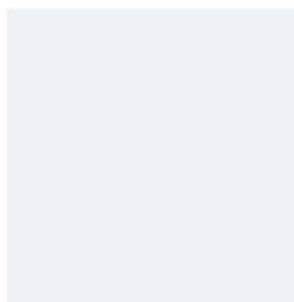
8. Hardwood Planks/Posts and Cladding - Recycled or Weathered Timber Planks with exposed bolt fittings on prefinished metal furring on base wall or similar.



9. Rendered Concrete/Block Wall - Loading Dock Screening Walls and Signage



10. Galzing - Glass panels to comply with Part J,BCA and are fixed to Black/Dark anodised or powdercoat finish framing.



11. Roofing - Metal Deck Roofing

Scott
Carver

Scott Carver Pty Ltd
Level 8, 71 Macquarie Street
Sydney NSW 2000 Australia

Telephone +61 2 9957 3988
hello@scottcarver.com.au
www.scottcarver.com.au

Woollooware Bay Town Centre

Project

Client

Bluestone Capital Ventures No.1 Pty Ltd

1 : 500 @ A1

0 5 10 15 20m

EXTERNAL MATERIAL FINISHES

Reference No.
20100176

Discipline

Drawing No.
DA931

Title
Rev.
2