

3.5 Open Spaces

Sydney's North Shore is known for its leafy suburbs which feature nature trees within the streetscape and open spaces. The Willoughby LGA reflects this characterisation through its 147 open space that cover an area of approximately 424 hectares.

These spaces serve a number of purposes, catering to various active and passive uses, and a broad range of user groups. The spaces within a 10 minute walk of the site have been analysed to identify the type of spaces and activities that are already available.

Flat Rock Creek is situated to the south, forming a tributary to middle harbour and extensive open space network that traverses west to east linking major sports fields in Artarmon Reserve, Bicentennial Reserve, and war memorial playing fields as well as associate riparian vegetation at Tunks Park.

Other important spaces identified by Willoughby Council during our discussions as important references for the site include:

- Sutherland Park – corner Sutherland and Whitton Roads, Chatswood
- Sanders Park, Julian Street, Willoughby
- Mashman Park, Victoria Avenue and corner Jacques Street, Chatswood
- Cleland Park, corner Hampden and Barton Roads, Artarmon
- King Park, Harden Avenue, Northbridge



01 Context Open Space



3.5.1 Open Spaces - Artarmon Reserve



01 Aerial Plan of Artarmon Reserve

Area: 9.5Ha  
Distance From Site: Approx 800m  
Access: Access off Burra Road & Clemsford Ave  
Edge condition: Heavily Vegetated Boundaries on all sides  
Visibility from Street: Low

- BBQ Facilities
- Off-Leash Dog Area
- Park Bench
- Parking
- Picnic Table
- Play Equipment
- Sports Area
- Toilets



05 Location Plan



02 View towards the Channel 9 Site across the sporting fields



03 The grandstand



04 Kids play space



06 Cycling Track



07 View from grandstand across the 3 sporting fields



3.5.2 Open Spaces - Hallstrom Reserve & Bicentennial Reserve



01 Aerial Plan of Hallstrom & Bicentennial Reserve

Area: 10.2Ha  
Distance From Site: Approx 350m  
Access: Small Street & Cycle Path in the south  
Edge condition: Vegetated planters and Carparking to Small Street  
Visibility from Street: High

- BBQ Facilities
- Disabled Toilet
- Cultural Feature
- Park Bench
- Parking
- Picnic Table
- Play Equipment
- Public Art
- Sports Area
- Toilets



02 Willoughby Incinerator



03 Willoughby Leisure Centre



04 Kids Play



05 Location Plan



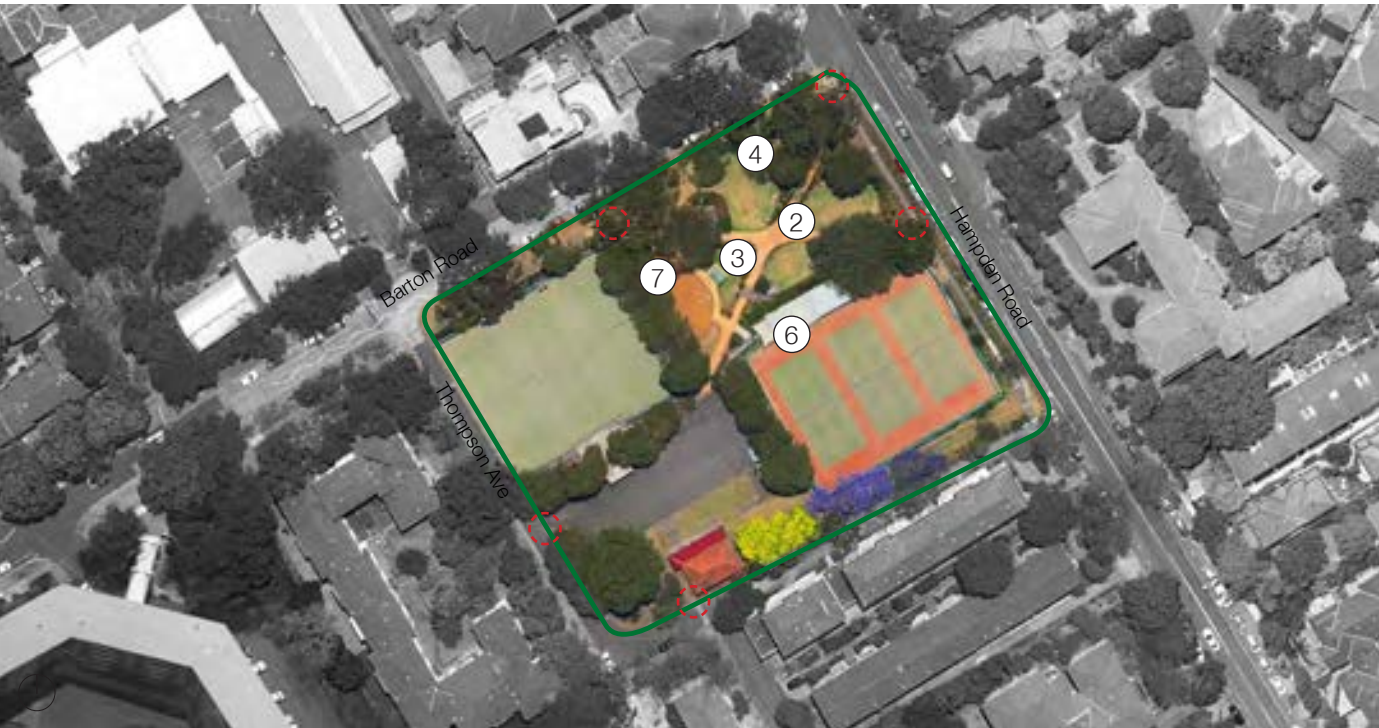
06 Picnic Area



07 Netball Courts



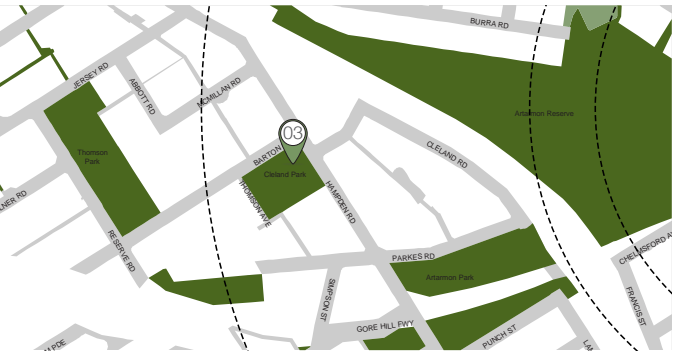
3.5.3 Open Spaces - Cleland Park



01 Aerial Plan of Cleland Park

Area: 7,978m2  
Distance From Site: Approx 1.5Km  
Access: Barton Rd & Hampden Rd  
Edge condition: Dense Planting and Brick walls  
Visibility from Street: medium

- BBQ Facilities
- Park Bench
- Parking
- Picnic Table
- Play Equipment
- Toilets



05 Location Plan



02 View Across the Formal Park Area



03 BBQ Facilities



04 Seating



06 Tennis Courts



07 Picnic Area



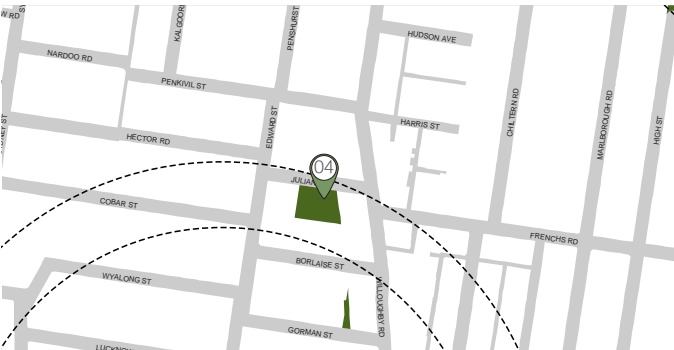
3.5.4 Open Spaces - Sanders Park



01 Aerial Plan of Sanders Park

Area: 3,284m2  
Distance From Site: Approx 500m  
Access: Julian Street, Borlaise Street and Gorman Street  
Edge condition: Low wall & Planting  
Visibility from Street: High

- Park Bench
- Parking
- Picnic Table
- Play Equipment



05 Location Plan



02 Kids Play



03 Turfed Area and Public Seating



04 Low Fenced Edge



06 Walking Paths



07 Kids Play



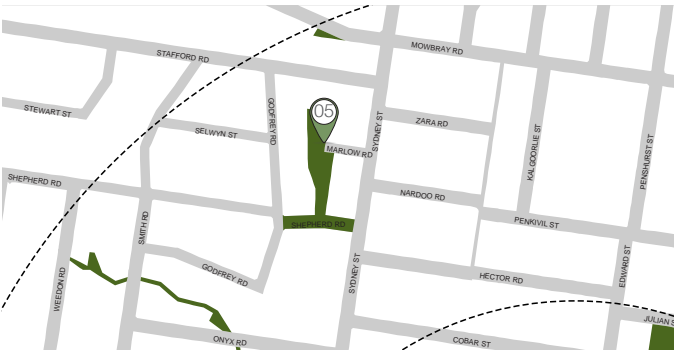
3.5.5 Open Spaces - Marlow Road Park



01 Aerial Plan of Marlow Road Park

Area: 9,237m2  
Distance From Site: Approx 1.1km  
Access: Marlow Street, Shepherd Road and Sydney Street.  
Edge condition: Planted edges to the street and Back Fences  
Visibility from Street: Low

- Park Bench
- Play Equipment
- Picnic Area



05 Location Plan



02 Natural Landscaped Path



03 Picnic Facilities



04 Slide



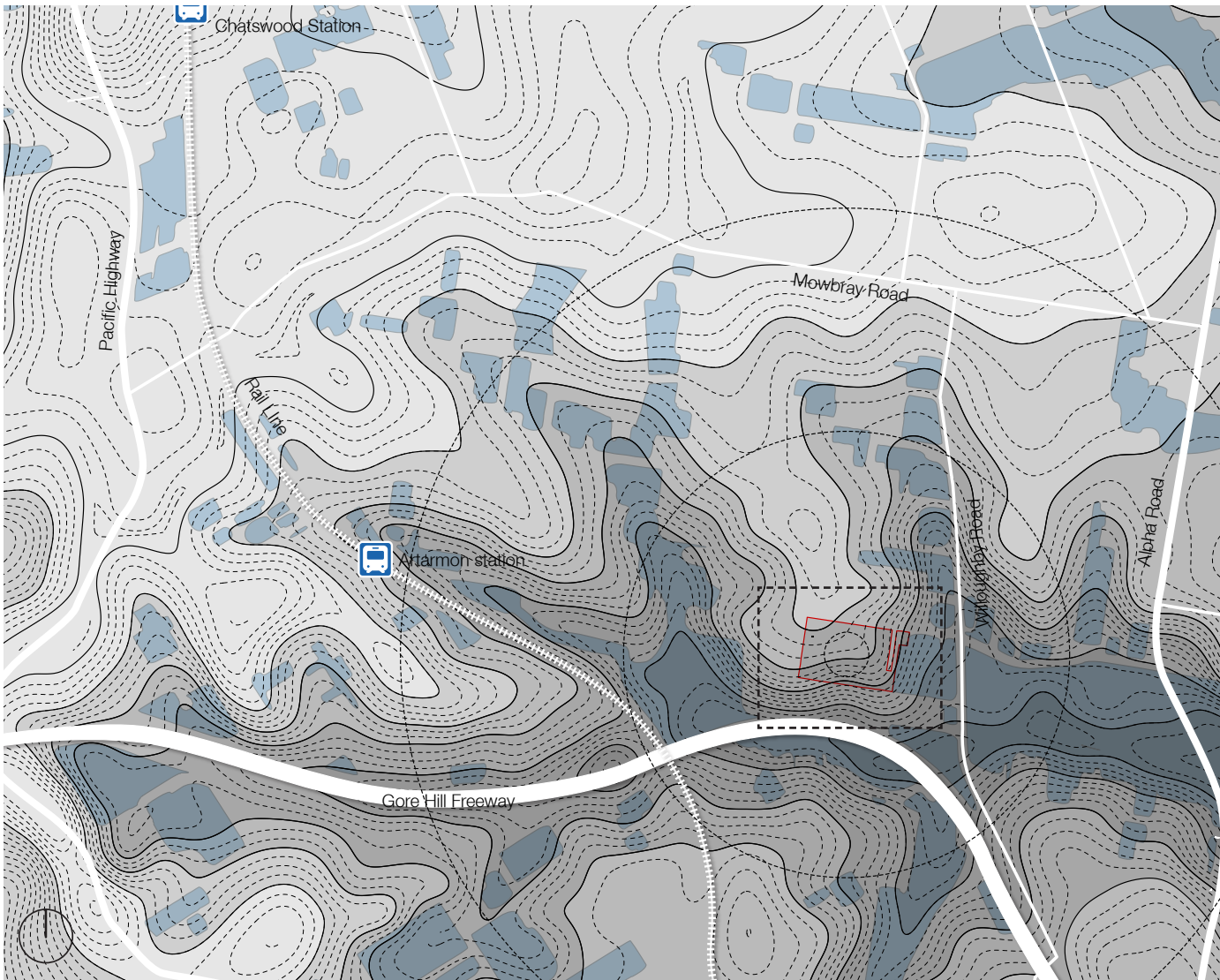
06 Densely Planted Mature Trees



07 Entry off Godfrey Reserve



3.6 Land Form & Topography

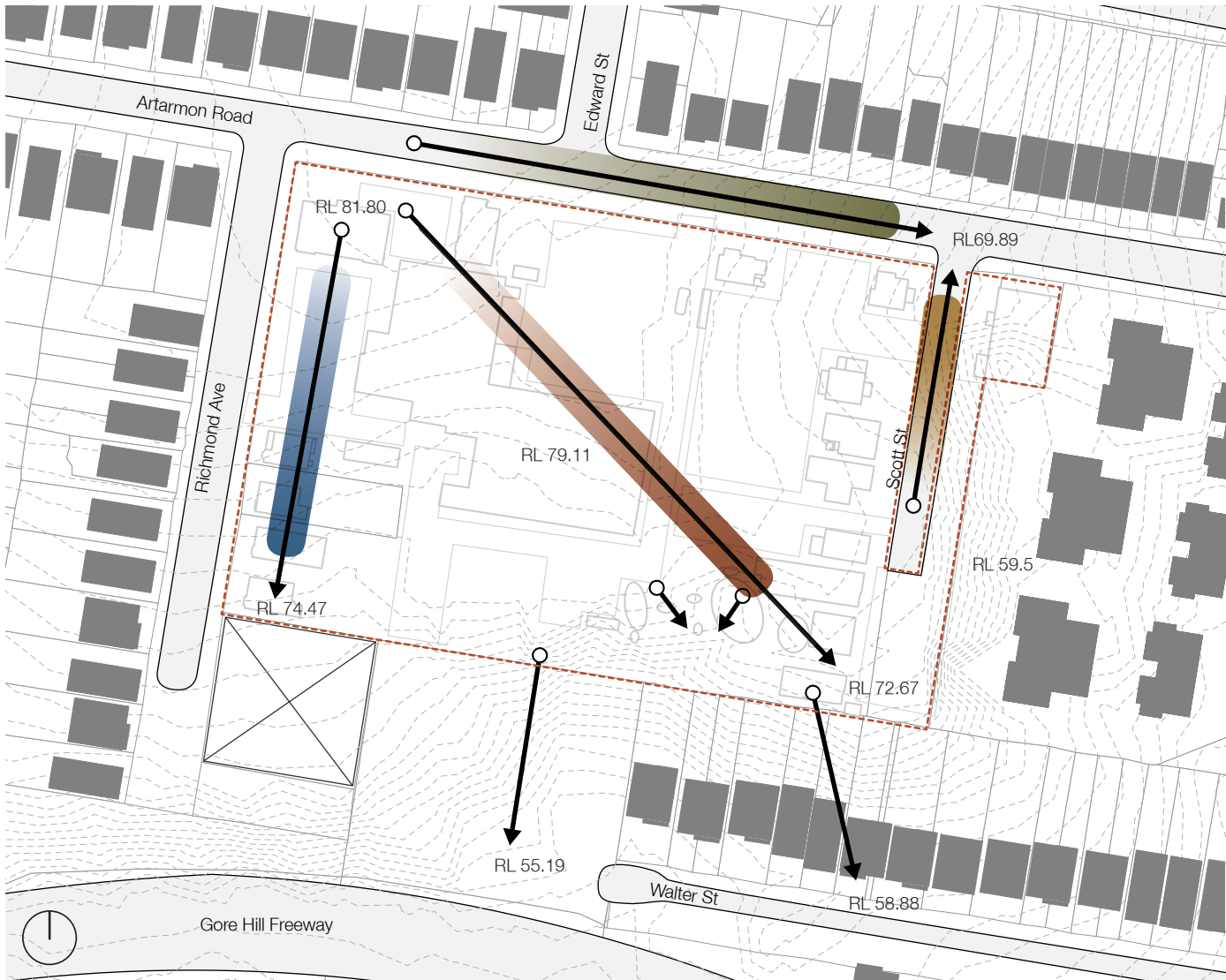


01 Local Context Topography

The site is located on the southern point of the ridgeline that runs from Mowbray Road and Chatswood down towards Artarmon Reserve and Willoughby Road.

The terrain drops steeply to the south of the site towards the Gore Hill Freeway before rising towards the suburbs of Naremburn and St Leonards. Flat Rock Creek runs west to east along the gully towards the Bicentennial Reserve, Northbridge, and the Harbour Foreshore.

Flood Plain  
Contours



02 Topography of the Site

The highest point on the site is the north-western corner, at the junction of Richmond Avenue and Artarmon Road. The site's topography falls 7.5m along the Richmond Avenue boundary, and 10m on the diagonal from the north-west to south-eastern corners. The fall in levels is most dramatic along the Artarmon Road frontage, 12m from west to east. Scott Street rises 4m from the junction with Artarmon Road. It's important to note that the change in site levels isn't smooth, but rather occurs across several terraces, several metres in height, as indicated by the retaining wall along the Artarmon Road frontage and eastern boundary.

Gradient Along Richmond Ave  
Gradient Across the Site  
Gradient Along Artarmon Road  
Gradient Down Scott Street