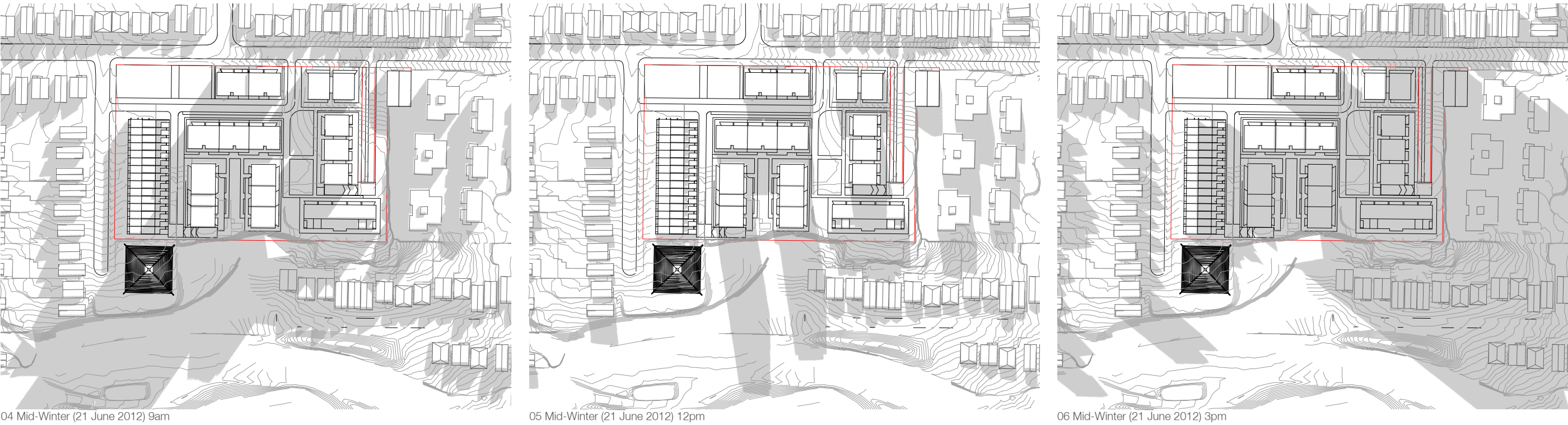


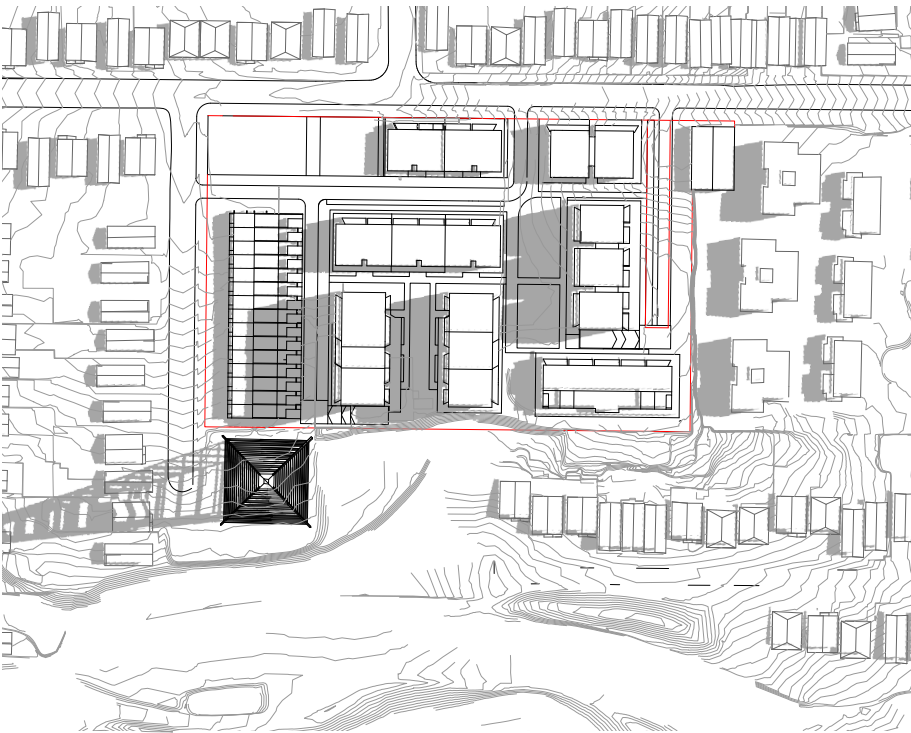
8.14 Shadow Study



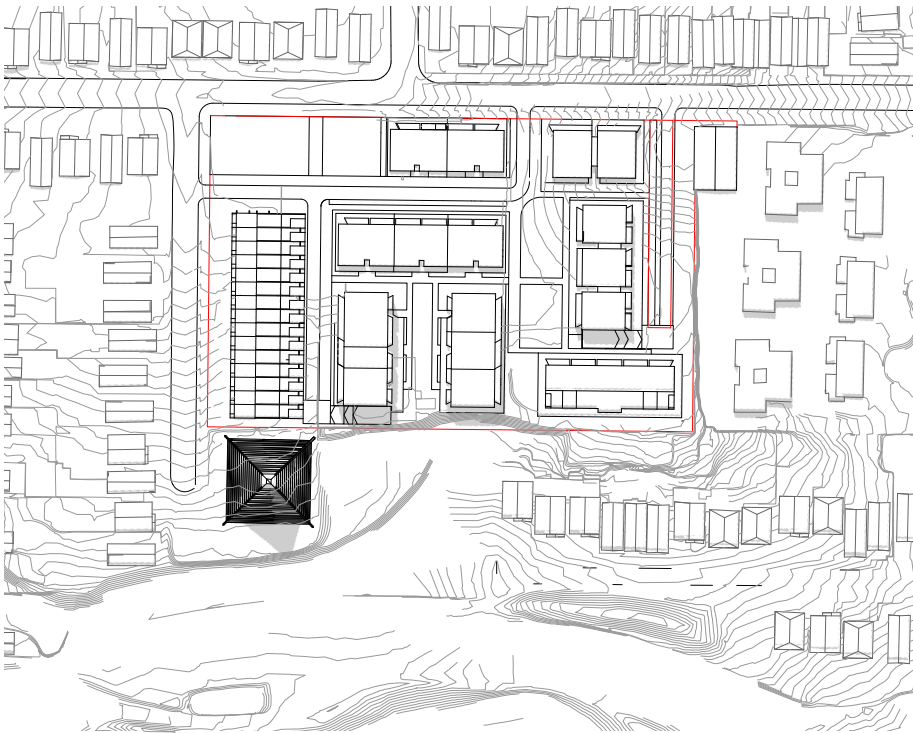
Buildings along the site's south eastern boundary are stepped from 3-4 storeys to ensure the rear of the Walter Street properties receive solar access during midday in mid-winter.

Further analysis of overshadowing during the equinox and peak summer period indicate the amount of sunlight passing through the site to the adjoining properties.

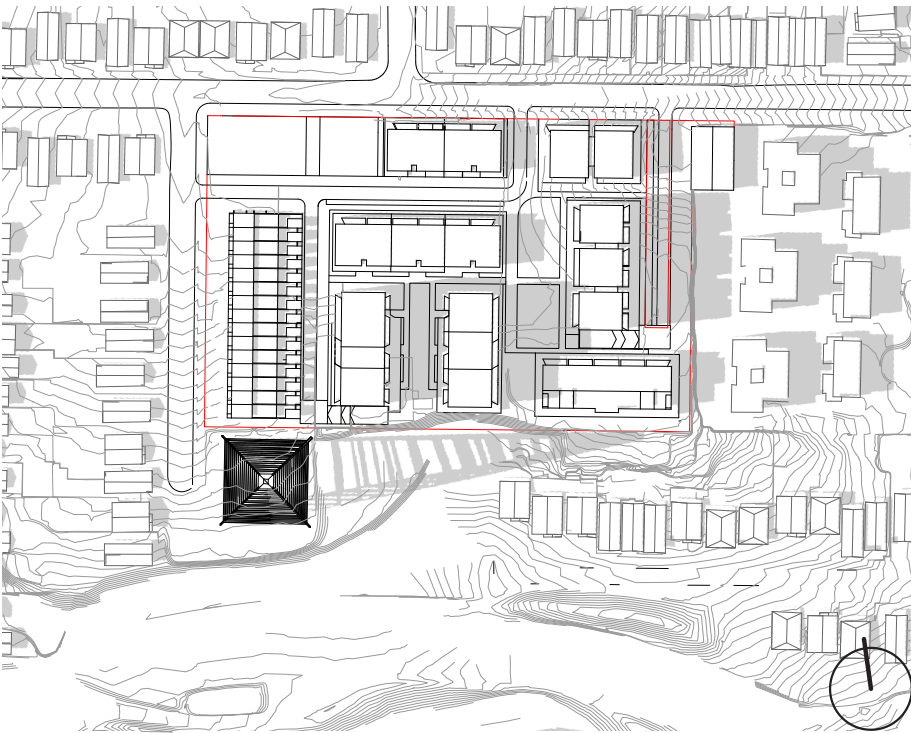
8.14 Shadow Study



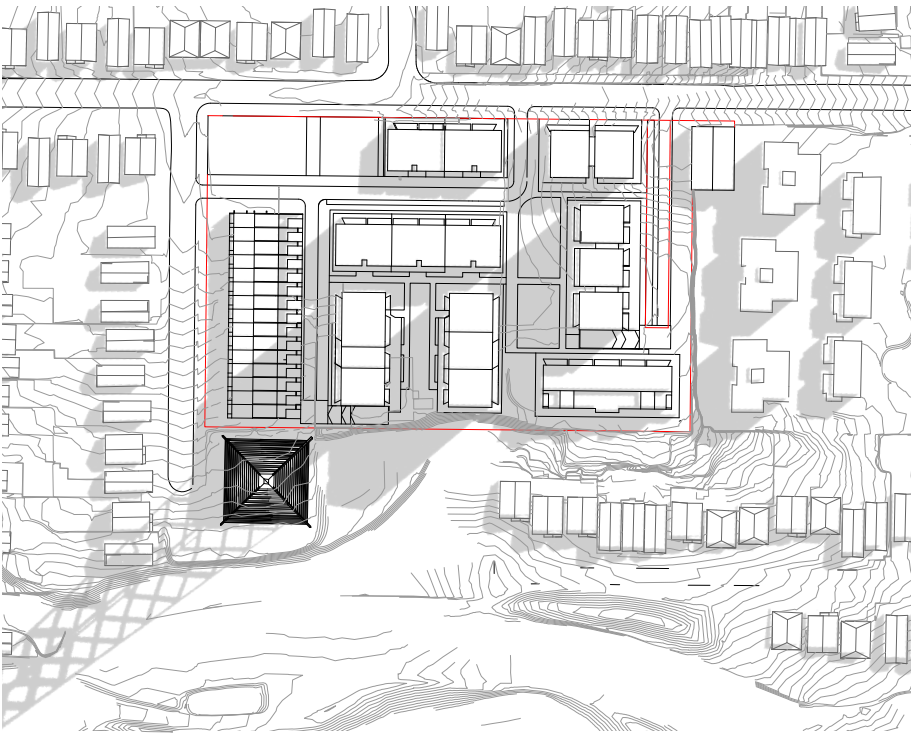
01 Solstice (22 December 2012) 9am



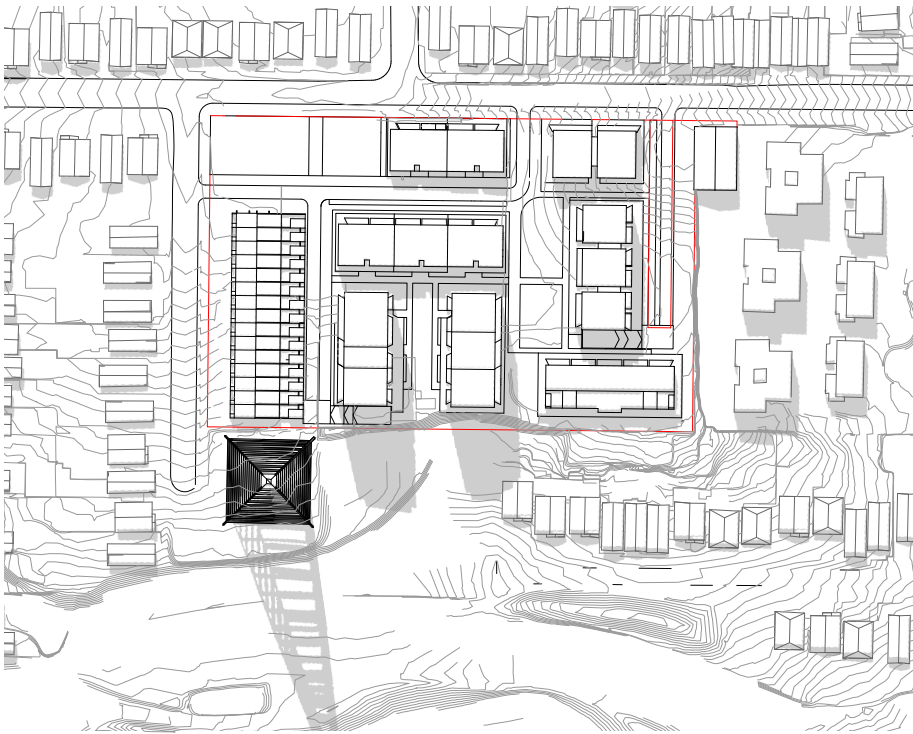
02 Solstice (22 December 2012) 12pm



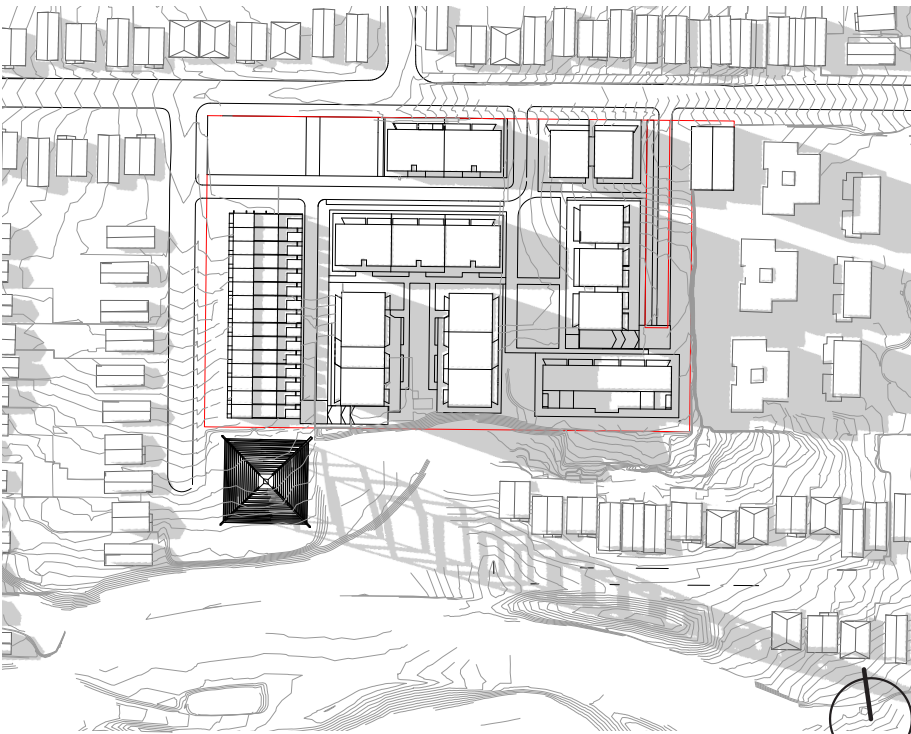
03 Solstice (22 December 2012) 3pm



04 Equinox (22 September 2012) 9am



05 Equinox (22 September 2012) 12pm



06 Equinox (22 September 2012) 3pm



8.15 View Analysis



01 View across the Gore Hill Freeway from Naremburn



02 View From Richmond Avenue



01 View across the Gore Hill Freeway from Naremburn



02 View From Richmond Avenue



8.15 View Analysis



03 View from Edward Street



04 View from the corner of Richmond Avenue & Artarmon Road



03 View from Edward Street



04 View from the corner of Richmond Avenue & Artarmon Road



8.15 View Analysis



05 View from the corner of Artarmon Road and Scott Street



06 View from Walter Street



05 View from the corner of Artarmon Road and Scott Street



06 View from Walter Street



8.15 View Analysis



07 View from the corner of Small Street and Willoughby Road



08 View from Willoughby Incinerator (Heritage Item)



07 View from the corner of Small Street and Willoughby Road



08 View from Willoughby Incinerator



8.15 View Analysis



09 View from Artarmon Reserve (Conservation Area)



10 View between no. 14 & 16 Salisbury Road (Heritage Items)



10 View from Artarmon Reserve



10 View between no. 16 & 18 Salisbury Road



8.15 View Analysis



11 View from the corner of Onyx Road and Sydney St (Conservation Area)



12 View from 58 Artarmon Road (Conservation Area)





8.15 View Analysis



13 View from 25 Burra Road (Conservation Area)



14 View the corner of Artarmon Road and Smith Road



13 View from 25 Burra Road (Conservation area)



14 View the corner of Artarmon Road and Smith Road