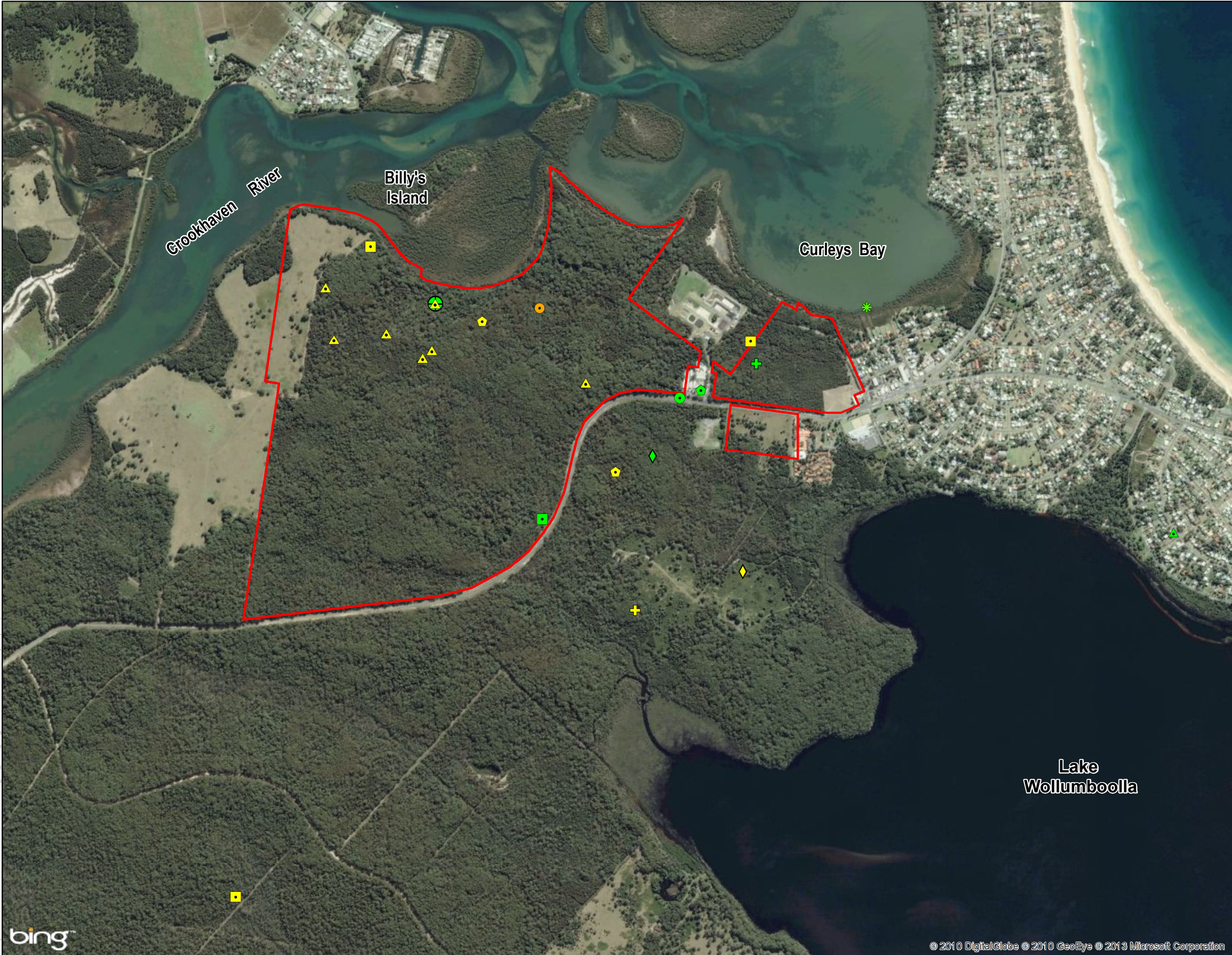


Figure 17 Threatened fauna recorded on the subject land and Long Bow Point in 2012 and 2013



**LEGEND**

Subject Land

**Threatened Species**

Glossy Black Cockatoo

Glossy Black feed tree

Grey Headed Flying Fox

Powerful Owl

Square-tailed Kite

Square-tailed Kite Nest

Eastern Curlew

Gang Gang Cockatoo

Little Eagle

Osprey

Sooty Owl

Varied Sitella

White-throated Needletail

Scarlet Robin

# NOTE  
Microchiropteran bat records have not been included because these species are wide-ranging and assumed to occur in all forests in the study area

0100200400600

Metres

N

**NOTES**

1. Digital cadastral database (DCDB) © 2012 NSW Dept of lands.  
2. Subject land boundaries based on DCDB 2012  
3. Aerial imagery courtesy of BingMapHybrid  
4. Threatened fauna data courtesy of SLR Ecology 2011-2012  
5. All features are approximate only and subject to detailed survey

SLR

2 Lincoln Street  
Lane Cove  
NSW 2066  
Australia  
T: +61 2 6287 0800  
F: +61 2 6287 0801  
www.slrconsulting.com

Project Name:  
Culburra West

Prepared for:  
Realty Realizations Pty Ltd

Project No: 610.10684

Scale 1:15,000 @ A3 Date 27/03/2013

Drafted Sara Haddady Approved Dominic Fanning

bing

© 2010 DigitalGlobe © 2010 GeoEye © 2013 Microsoft Corporation