



Department of  
Primary Industries  
Catchments & Lands

Contact: Helen Wheeler

Phone: 02 44289133

FAX: 02 44212172

Email: [Helen.Wheeler@lands.nsw.gov.au](mailto:Helen.Wheeler@lands.nsw.gov.au)

Our Ref: 12/046398

Attention: Ms Sally Munk  
Department of Planning and Infrastructure  
GPO Box 39  
SYDNEY  
NSW 2001

Dear Ms Monk

**Re: Exhibition of Environmental Assessment for Integrated Residential and Tourist Development, Comberton Grange, Nowra (06\_0135).**

Thankyou for your letter of 23 October 2012 regarding the exhibition of the Environmental assessment prepared by Conybeare Morrison for the proposed development

The "Comberton Grange" property is separated from Currumbene Creek by Crown reserve 78755 for Public Recreation (the reserve) (fig 1). The reserve is devolved to Shoalhaven City Council (SCC) for care, control and management,

The main Environmental Assessment Report document for the site states at 9.12 (h) that the reserve is not within the development, whereas in the Master Plan drawings throughout the document and its appendix' the reserve is included as part of the site.

No authorisation of any activity within the Crown reserve, or inclusion of the Crown reserve in the development has been given by Crown Lands, or appears to have been given by SCC. Until authorisation is sought and given no activities associated with the development can occur on the reserve.

Additionally any plantings or manipulation of vegetation within the reserve must be authorised by the manager of that land prior to any physical works being undertaken. There may be an opportunity for the Shaolin Temple to gain authorisation from SCC for the proposed activities; in the first instance this should be discussed directly with SCC.

Appendix 1 Drawing MP1 indicates plantings including Water Gums (*Tristanopsis laurina*) will be undertaken in the Currumbene Creek Corridor. Water Gums have not been detected on the reserve and planting this species on the reserve is not supported.

Should any planting of vegetation on the reserve be authorised in the future, a more suitable selection includes the following endemic species present on the south bank of the Currumbene creek:

Swamp Mahogany (*E. Robusta*), Bangalay (*E. botryiodes*), Blackbutt (*E. pillularis*), Lilly Pilly (*Acmena smithii*), Sandpaper Fig (*Ficus corontata*), Parramatta Green Wattle – (*A. parramattensis*), Yellow Wood (*Acronychia oblongifolia*), Blueberry Ash (*Eleocarpus reticulatus*), Prickly-leaved Paperbark (*Melaleuca stypheloides*), *M. ericifolia*, and *M. linariifolia*.

Please contact me if you require further information or clarification.

Yours sincerely

Helen Wheeler  
Natural Resource Project Officer  
Crown Lands  
Catchment and Lands  
5 O'Keefe Avenue  
Nowra NSW 2541

PO Box 309  
Nowra NSW 2541  
02 44289100

ABN 42 860 678 701 | [www.crownlands.nsw.gov.au](http://www.crownlands.nsw.gov.au)

**PLEASE NOTE: The Nowra office counter hours are  
8.30am to 1 pm weekdays.**

Appointments during business hours (8.30am to 4.30pm)  
can be arranged by phoning (02) 4428 9100

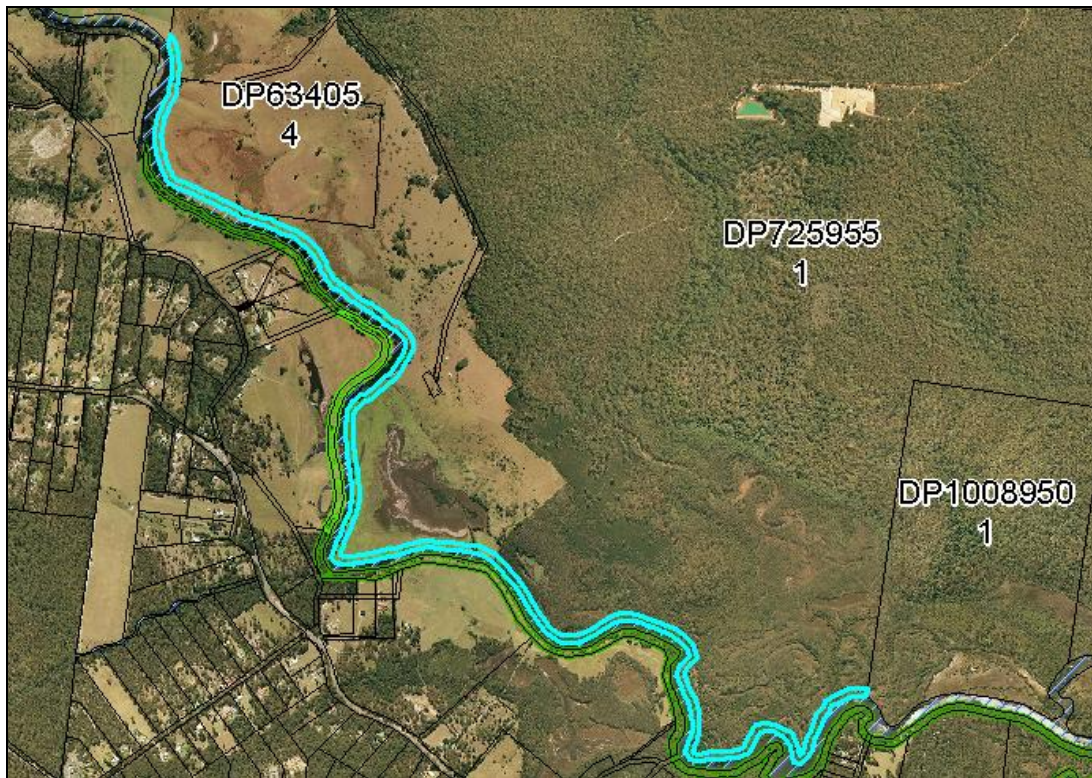


Fig 1: Crown reserve 78755 for Public Recreation adjacent to the proposed development and the Currambene Creek is outlined in light blue. The reserve on both sides of the Creek is under the care control and management of SCC.

Catchment and Lands  
5 O'Keefe Avenue  
Nowra NSW 2541

PO Box 309  
Nowra NSW 2541  
02 44289100

ABN 42 860 678 701 | [www.crownlands.nsw.gov.au](http://www.crownlands.nsw.gov.au)

**PLEASE NOTE: The Nowra office counter hours are  
8.30am to 1 pm weekdays.**

Appointments during business hours (8.30am to 4.30pm)  
can be arranged by phoning (02) 4428 9100