

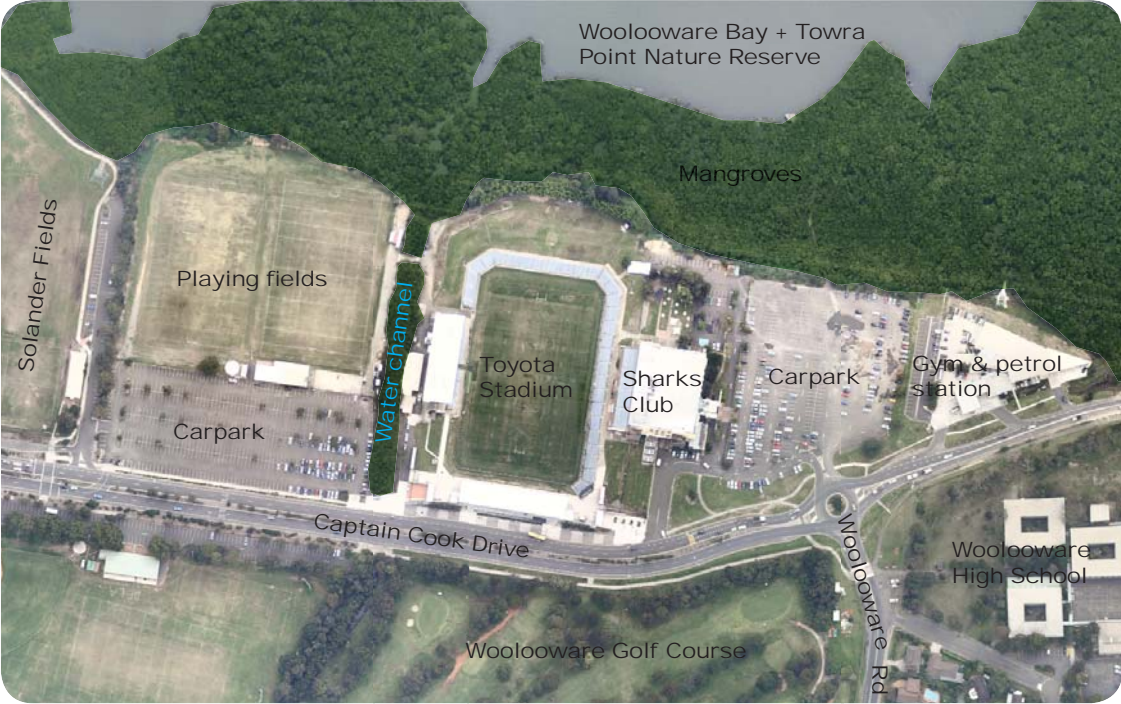
# Woollooware Bay Town Centre

## Retail Development Application





Context plan



Aerial image (existing site conditions). Source: Nearmaps

Existing site images

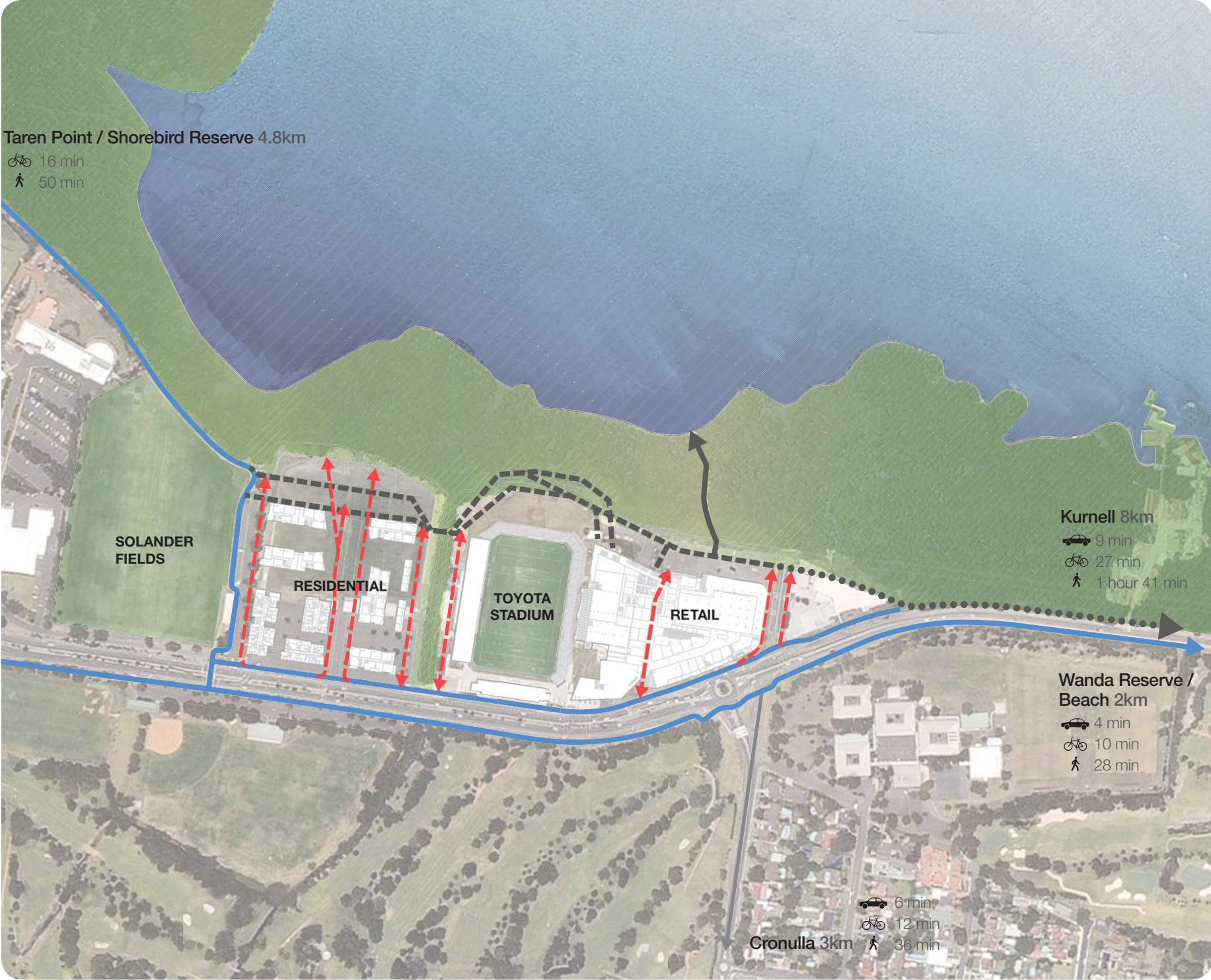


Existing boardwalk    Sharks Club and carpark    Aerial view of mangroves

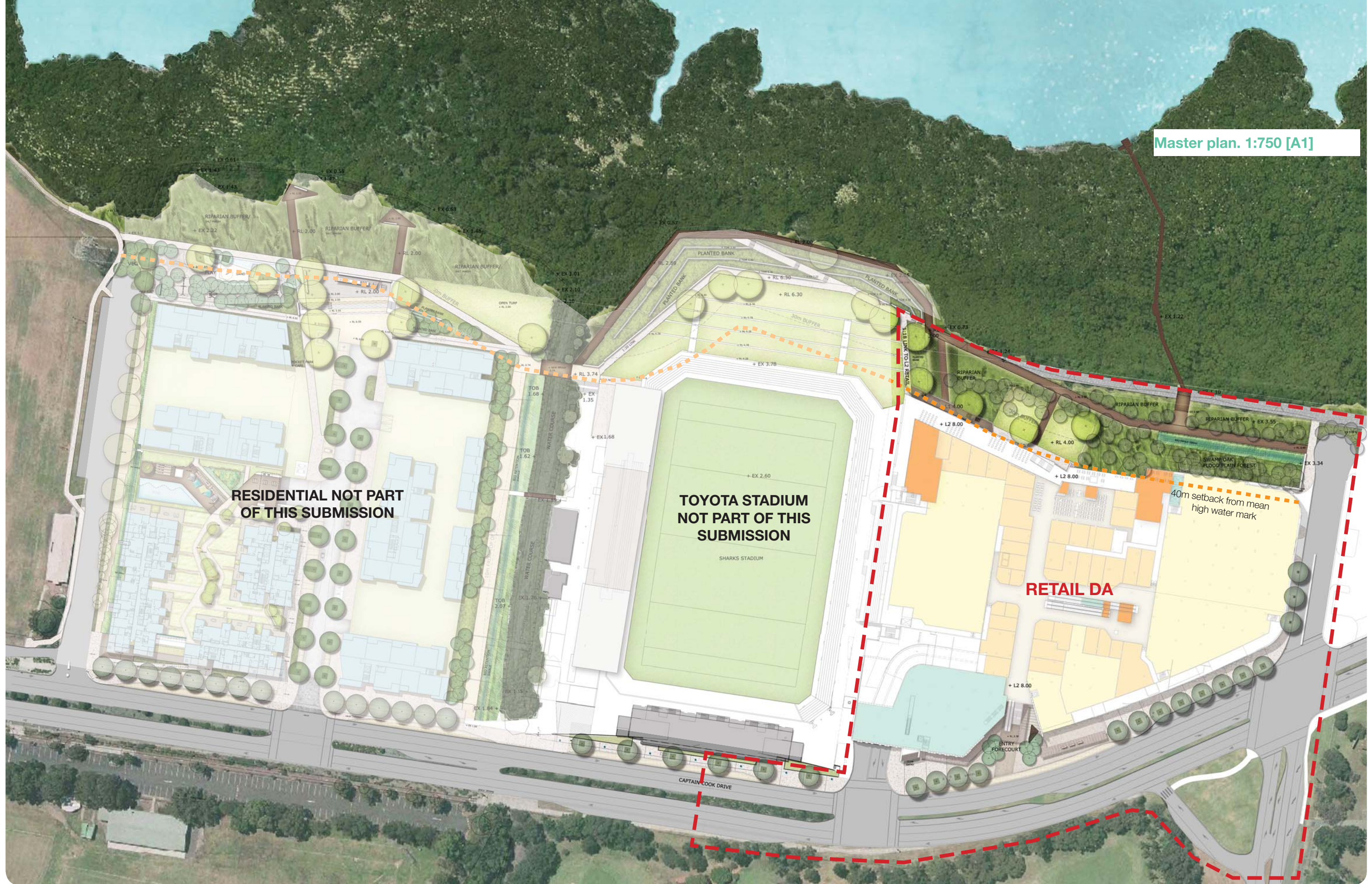
Key

- Existing shared pedestrian / cycle paths
- Existing mangrove boardwalk
- Proposed shared foreshore pathways and boardwalk
- Possible shared foreshore pathway extension
- Proposed through-site pedestrian links

Master plan pedestrian links. Not to scale





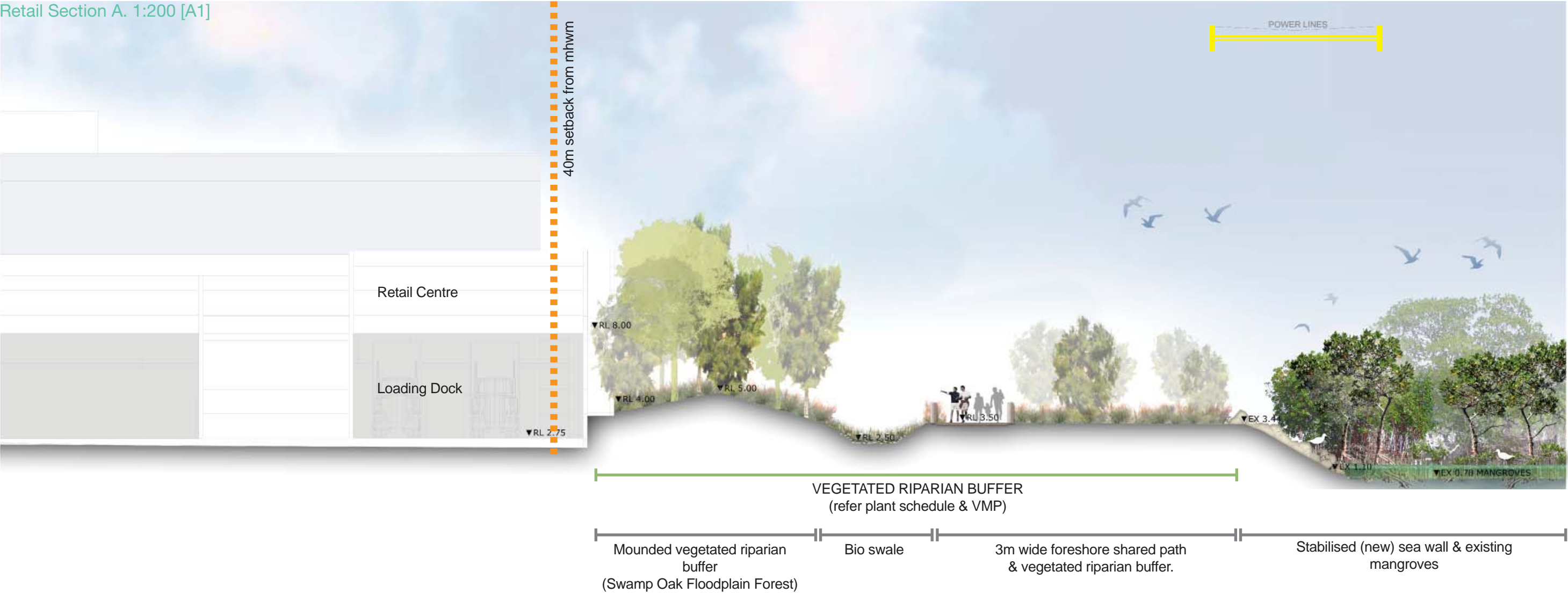


--- Extent of application









Foreshore shared path, swale and vegetated buffer. Precedent images



Vegetated riparian buffer  
> ASPECT image library



Bio swale  
> Wetland 5, Sydney Park. ASPECT Studios



Links into the local  
shared path network  
> ASPECT image library



Informal sea wall/ bank stabilisation  
> Glebe Foreshore.



Retain and protect existing  
mangroves



Retail Section B. 1:200 [A1]



Foreshore shared path, vegetated buffer and retail spillout. Precedent images



Raised shared pedestrian path through riparian zone  
> Narrabeen Lagoon. ASPECT Studios



Vegetated riparian buffer planting and informal fencing  
> Shorebird Reserve upgrade, Taren Point.



Foreshore boardwalk (possible pre cast concrete)  
> Malpica, Spain



Foreshore boardwalk (possible composite)  
> Narrabeen Lagoon. ASPECT Studios





The Retail Waterfront, vegetated buffer and foreshore shared path. Precedent images



> Shorebird Reserve upgrade, Taren Point.



> Shorebird Reserve upgrade, Taren Point.





Entry steps/ escalator up to retail level 2

Entry Forecourt  
Feature bench and *Livistona australis* native palm planting.  
Unit paving

Street tree planting and in situ concrete footpath

Captain Cook Drive

Retail forecourt, club entry and streetscape. Precedent images



Unit paving  
> ASPECT image library



Informal seating  
> ASPECT image library



Native palms at entry  
> ASPECT image library



In situ concrete footpath with exposed aggregate  
> ASPECT image library



Porous paving to tree surrounds  
> ASPECT image library



Retail Street tree  
> Araucaria heterophylla



SHARKS STADIUM

CAPTAIN COOK DRIVE

ENTRY FORECOURT

40m setback from mhw

SWAMP OAK FLOOD PLAIN FOREST

RIPARIAN BUFFER

Vegetated riparian buffer

Bio Swale

Streetscape

Existing trees to be retained

Existing trees to be removed

Proposed trees

Existing tree to be relocated

All native (local) species in these zones

Proposed zone of Swamp Oak Floodplain Forest planting

Botanic Name	Common Name
<b>Trees</b>	
<i>Acmena smithii</i>	Lilly Pilly
<i>Casuarina glauca</i>	Swamp Oak
<i>Cupaniopsis anacardioides</i>	Tuckeroo
<i>Ficus rubiginosa</i> (relocated)	Port Jackson Fig
<i>Glochidion ferdinandi</i>	Cheese Tree
<i>Melaleuca ericifolia</i>	Swamp Paperbark
<i>Melaleuca quinquenervia</i>	Broad Leaved Paperbark
<b>Sedges/ Rushes</b>	
<i>Baumea juncea</i>	Bare Twig Rush
<i>Carex appressa</i>	Tall Sedge
<i>Isoplepis uninudata</i>	Swamp Club Rush
<i>Juncus kraussii</i>	Sea Rush
<i>Juncus usitatus</i>	Common Rush
<i>Lomandra longifolia</i>	Ribbon Grass
<b>Ferns/ Herb</b>	
<i>Blechnum indicum</i>	Swamp Water-fern
<i>Hypolepis muelleri</i>	Harsh Ground Fern
<i>Persicaria decipiens</i>	Slender Knotweed
<b>Vines</b>	
<i>Parsonsia straminea</i>	Common Silkpod
<i>Stephania japonica</i>	Snake Vine
<b>Grasses</b>	
<i>Cynodon dactylon</i>	Sand Couch
<i>Imperata cylindrica</i> var. <i>major</i>	Blady Grass

Botanic Name	Common Name
<b>Trees</b>	
<i>Melaleuca ericifolia</i>	Swamp Paperbark
<i>Melaleuca quinquenervia</i>	Broad Leaf Paperbark
<b>Rushes / Grasses</b>	
<i>Baumea juncea</i>	Bare Twig Rush
<i>Carex appressa</i>	Tall Sedge
<i>Dianella caerulea</i>	Flax Lily
<i>Isoplepis inundata</i>	Swamp Club Rush
<i>Juncus kraussii</i>	Sea Rush
<i>Juncus usitatus</i>	Common Rush
<i>Lomandra longifolia</i>	Spiny Headed Mat Rush

Botanic Name	Common Name
<b>Trees (options)</b>	
<i>Agathis robusta</i>	Queensland Kauri
<i>Araucaria columnaris</i>	Cook Pine
<i>Araucaria heterophylla</i>	Norfolk Island Pine
<i>Ficus obliqua</i>	Small Leaved Fig
<i>Livistona australis</i>	Cabbage Palm
<i>Toona australis</i>	Australian Red Cedar
<b>Rushes / Grasses</b>	
<i>Dianella caerulea</i>	Flax Lily
<i>Dichelachne crinita</i>	Longhair plume grass
<i>Doryanthes excelsa</i>	Gynea Lily
<i>Juncus usitatus</i>	Common Rush
<i>Lomandra hystrix</i>	Longleaf Mat Rush
<i>Lomandra longifolia</i>	Spiny Headed Mat Rush
<i>Pennisetum alopecuroides</i>	Fountain Grass

Captain Cook Drive

*Araucaria columnaris*

*Araucaria heterophylla*

*Livistona australis*

