



2. Where approved building separation distances are below RFDC 'Rules of thumb', suitable design measures to ensure privacy (e.g. dwelling orientation, privacy screens, hi-light windows and the like) must be demonstrated in detailed project applications

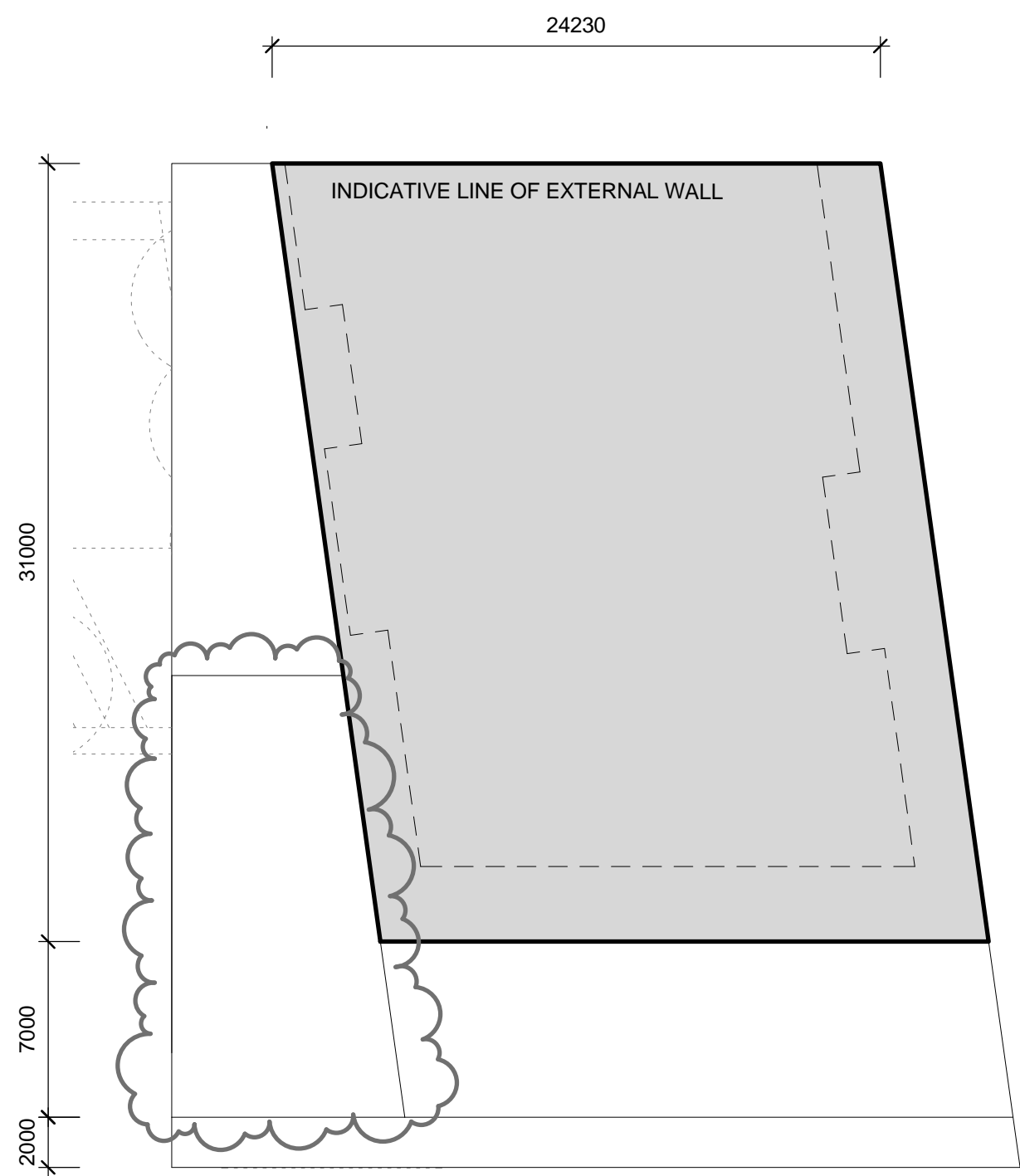
Discovery Point, Wollie Creek

Stage 1

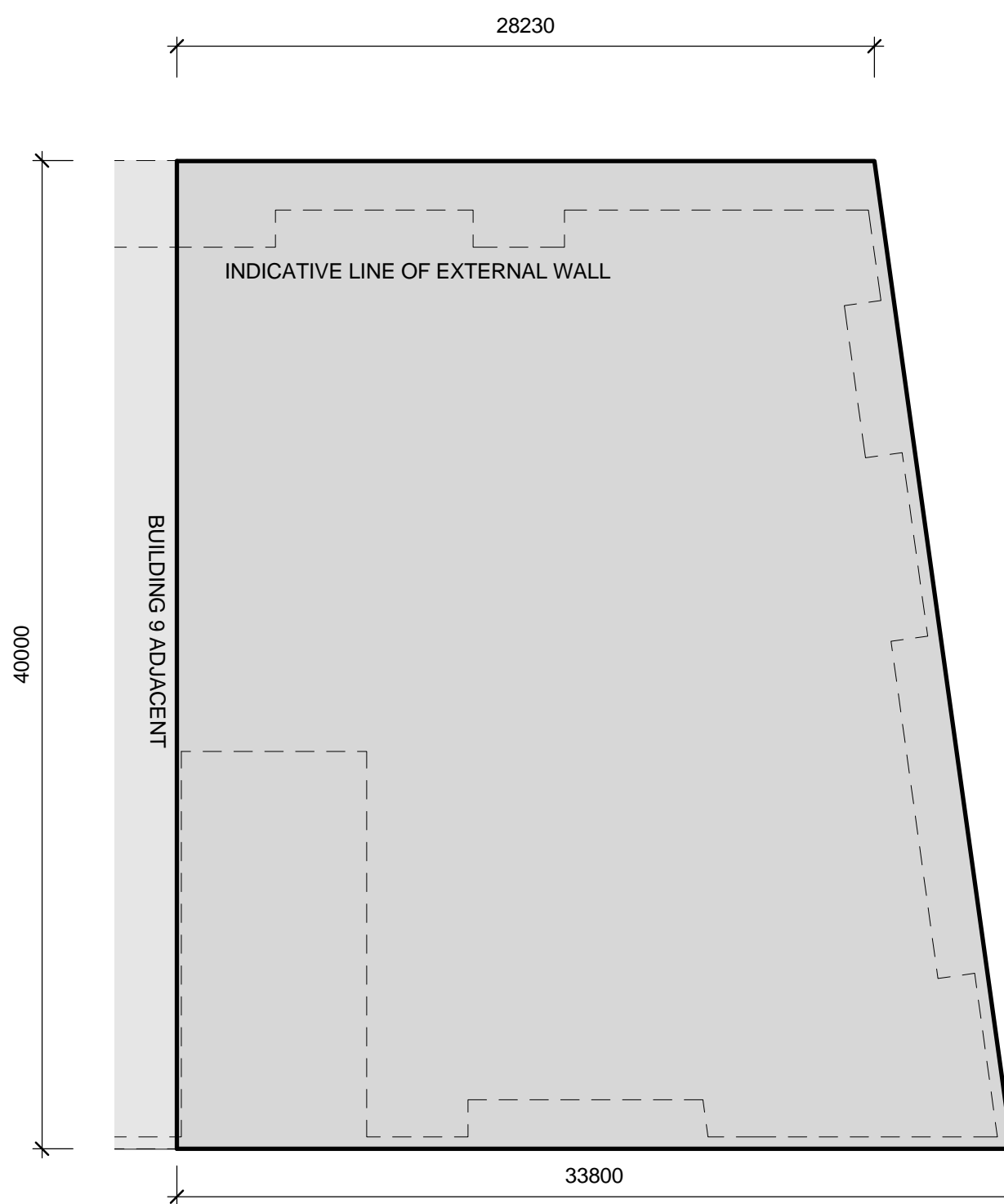
Proposed Building Envelopes

FOR APPROVAL

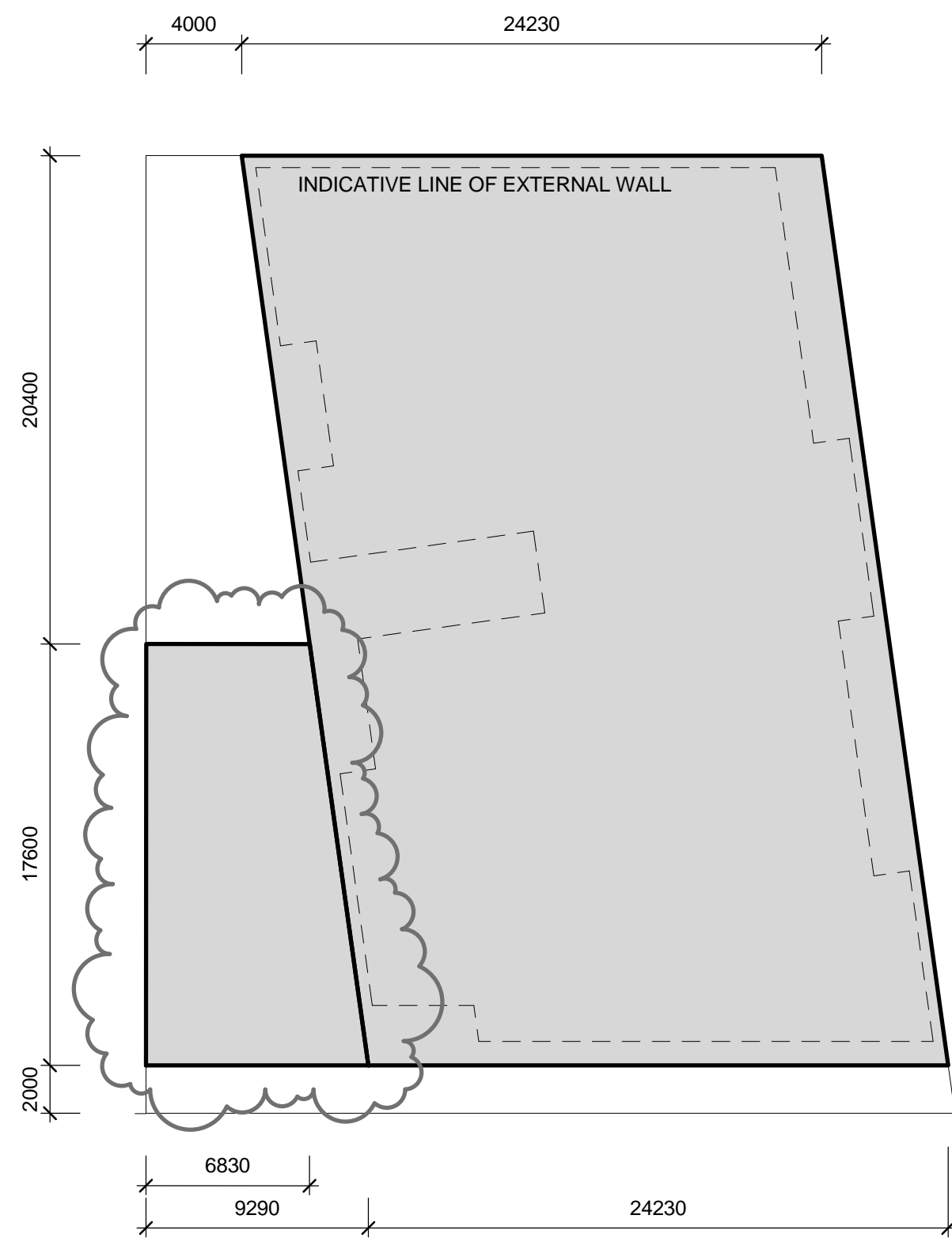
BATESSMART™



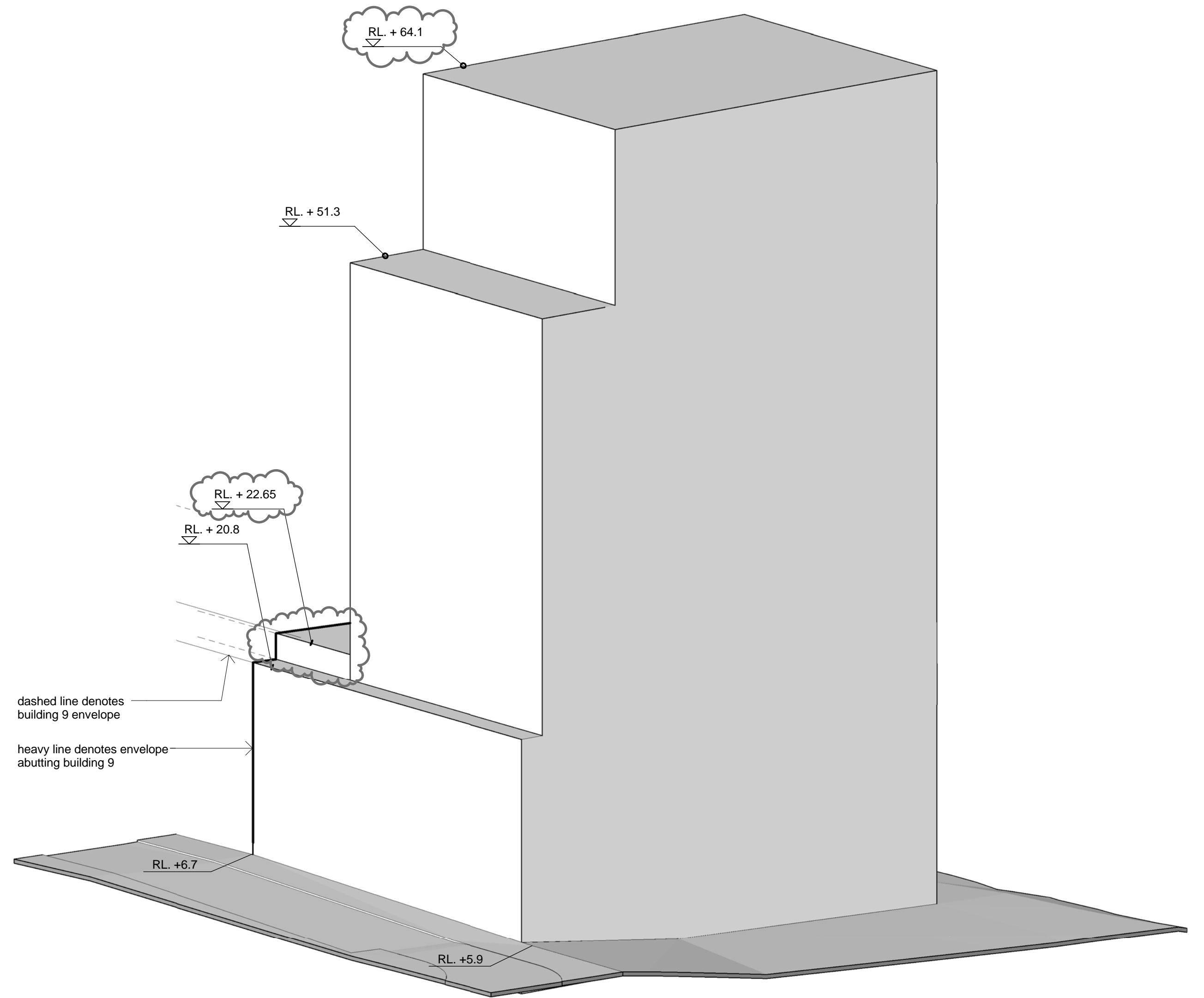
3 Typical High Level Plan
1 : 250



1 Low Level Plan
1 : 250



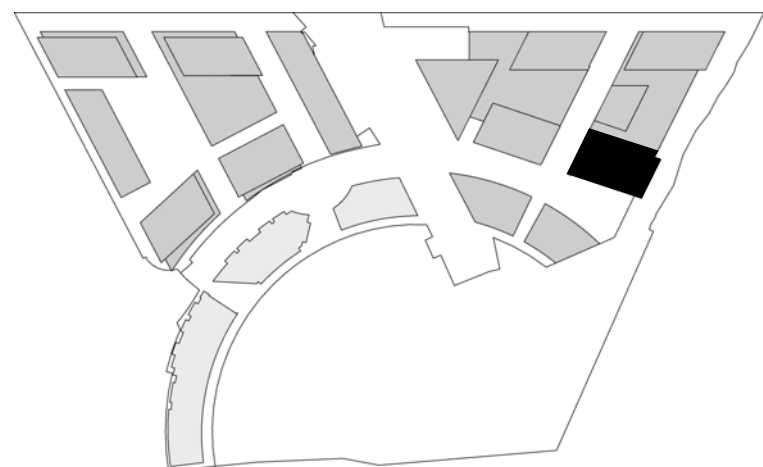
2 Typical Level Plan
1 : 250



4 3D View
1 : 250



NOTE: AWNINGS, SUN CONTROL DEVICES, TELECOMMUNICATION DESIGN FEATURES AND THE LIKE ARE PERMITTED TO ENCROACH BEYOND THE BUILDING ENVELOPES



Amendments since Revision A
Envelope reduced at East, West and South to increase building separation
Setback to Cooks River Increased
Typical High Level Plan width amended

Revision	Date	Description	Initial	Checked
F	03.06.13	FOR APPROVAL	AW	MA
E	19.02.13	FOR INFORMATION	AW	MA
D	11.11.11	FOR APPROVAL	DL	MA
C	18.04.11	FOR APPROVAL	AW	MA
B	10.12.10	FOR APPROVAL	JK	MA
A	18.06.10	FOR APPROVAL	AW	MA

Discovery Point, Woll Creek Concept Plan

Building 8 Envelope Parameters

Check all dimensions and site conditions prior to commencement of any work, the purchase or ordering of any materials, fittings, plant, services or equipment and the preparation of shop drawings and or the fabrication of any components.
Do not scale drawings - refer to figured dimensions only. Any discrepancies shall immediately be referred to the architect for clarification.
All drawings may not be reproduced or distributed without prior permission from the architect.

Scale	1:250 @ A1 , 1:500 @ A3		
Drawn	AW	Checked	MA
Project no.	S11191		
Status	PLANNING		
Plot Date	3/06/2013 4:49:26 PM		
Plot File	C:\Temp\masterplan-discovery-111110_Central_WAY.rvt		
Drawing no.	DA3-010	Revision	F

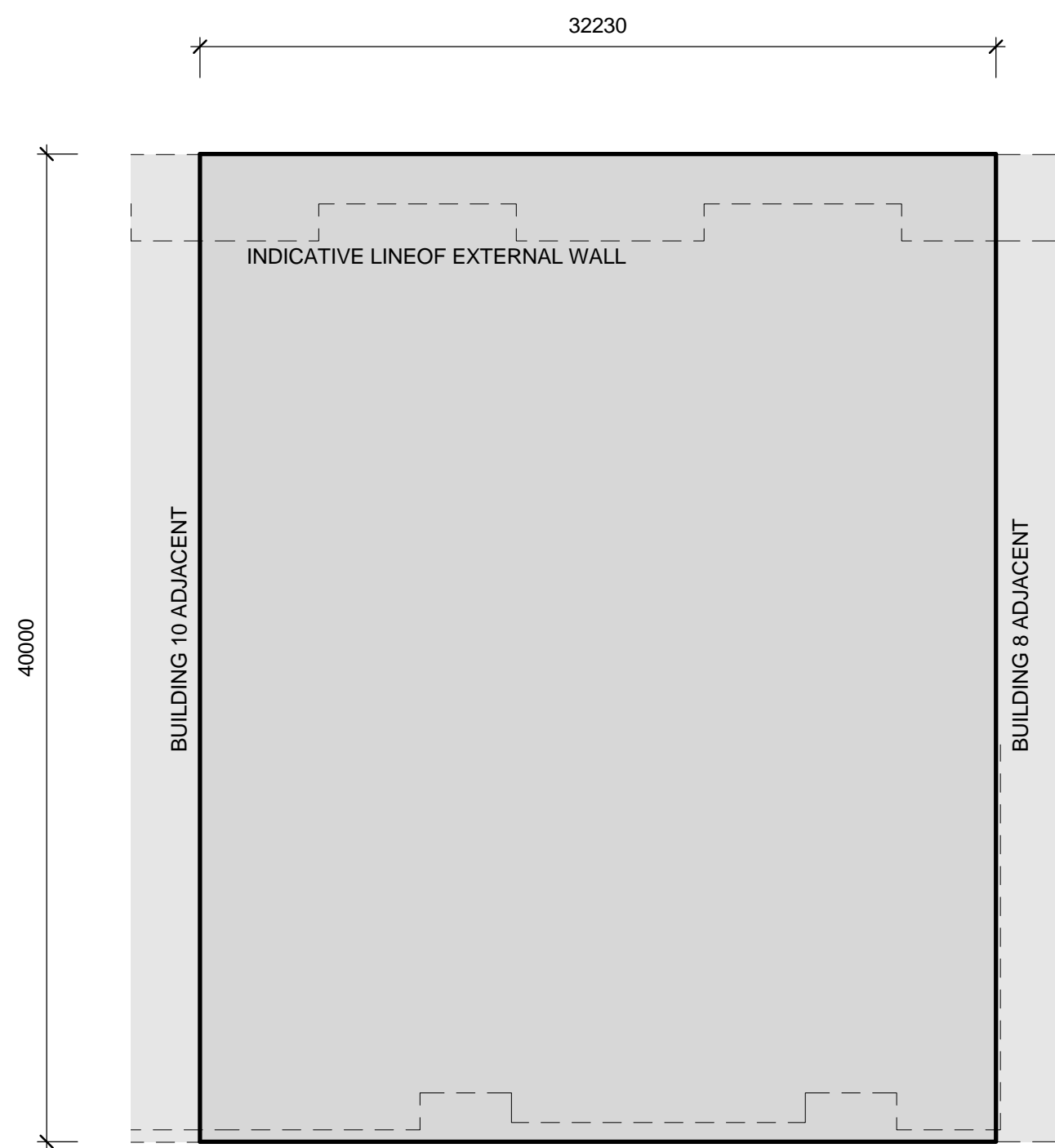
FOR APPROVAL

Sydney 1/243 Liverpool Street
East Sydney NSW 2010 Australia
T 02 8354 5100 F 02 8354 5199
email syd@batesmart.com.au
http://www.batesmart.com.au

Melbourne 1 Nicholson Street
Melbourne VIC 3000 Australia
T 03 8664 6200 F 03 8664 6300
email mel@batesmart.com.au
http://www.batesmart.com.au

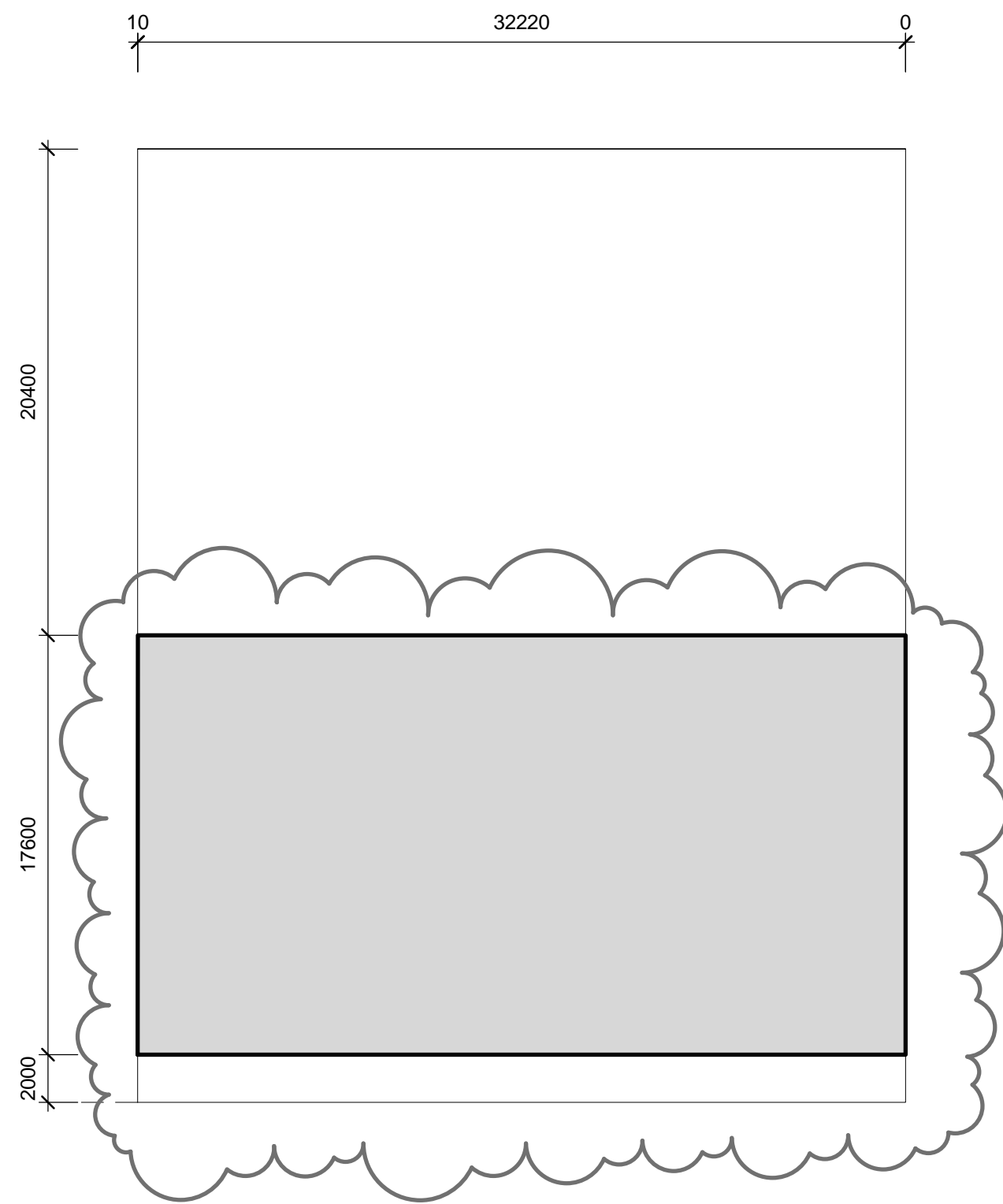
Bates Smart Pty Ltd ABN 70 004 999 400

BATESSMART™

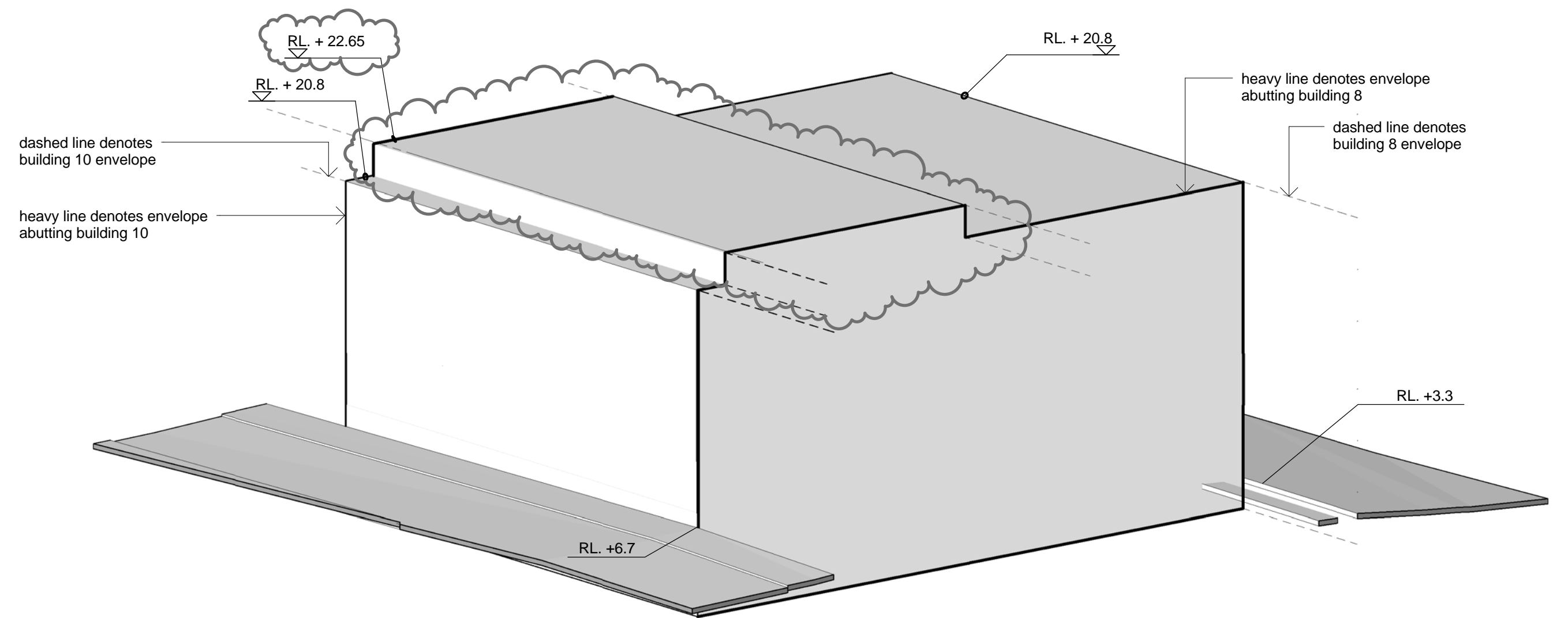


Chisholm Street

1 Low Level Plan
DA3-011 1 : 250



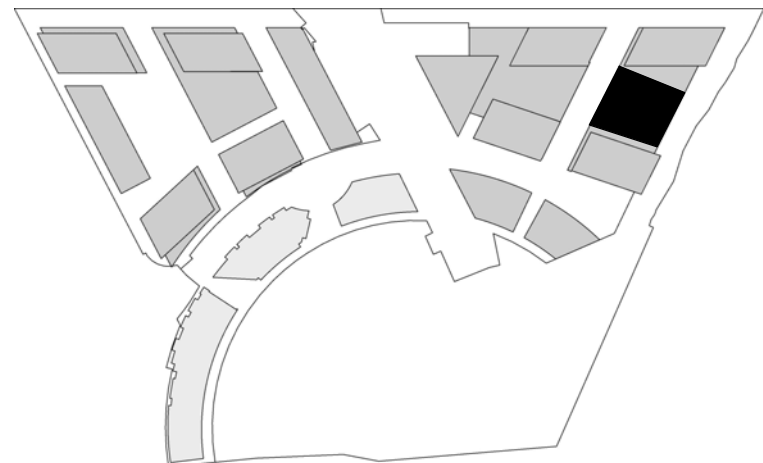
2 Typical Level Plan
DA3-011 1 : 250



3 3D View
DA3-011



NOTE: AWNINGS, SUN CONTROL DEVICES, TELECOMMUNICATION DEVICES, ARCHITECTURAL DESIGN FEATURES AND THE LIKE ARE PERMITTED TO ENCROACH BEYOND THE BUILDING ENVELOPES



Amendments since Revision A
Envelope increased to include podium of building 4;
Envelope reduced at East to increase building separation
Setback to Cooks River Increased

Revision	Date	Description	Initial	Checked
D	03.06.13	FOR APPROVAL	AW	MA
C	11.11.11	FOR APPROVAL	DL	MA
B	10.12.10	FOR APPROVAL	JK	MA
A	18.06.10	FOR APPROVAL	AW	MA

Discovery Point, Wolli Creek Concept Plan

Building 9 Envelope Parameters

Check all dimensions and site conditions prior to commencement of any work, the purchase or ordering of any materials, fittings, plant, services or equipment and the preparation of shop drawings and or the fabrication of any components.
Do not scale drawings - refer to figured dimensions only. Any discrepancies shall immediately be referred to the architect for clarification.
All drawings may not be reproduced or distributed without prior permission from the architect.

Scale	1:250 @ A1 , 1:500 @ A3		
Drawn	AW	Checked	MA
Project no.	S11191		
Status	PLANNING		
Plot Date	3/06/2013 4:49:41 PM		
Plot File	C:\Temp\masterplan-discovery-111110_Central_WAY.rvt		
Drawing no.	DA3-011	Revision	D

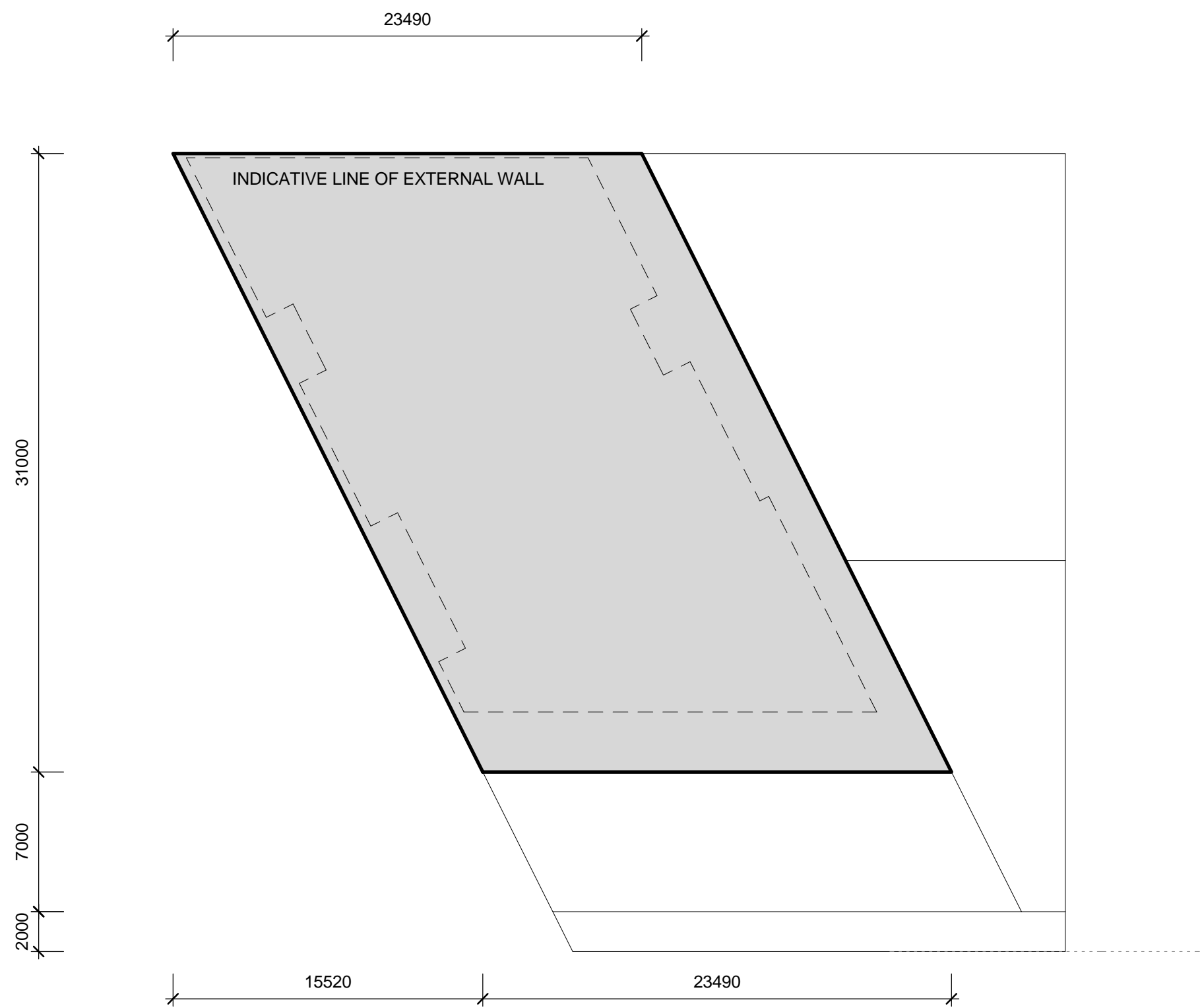
FOR APPROVAL

Sydney 1/243 Liverpool Street
East Sydney NSW 2010 Australia
T 02 8354 5100 F 02 8354 5199
email syd@batesmart.com.au
http://www.batesmart.com.au

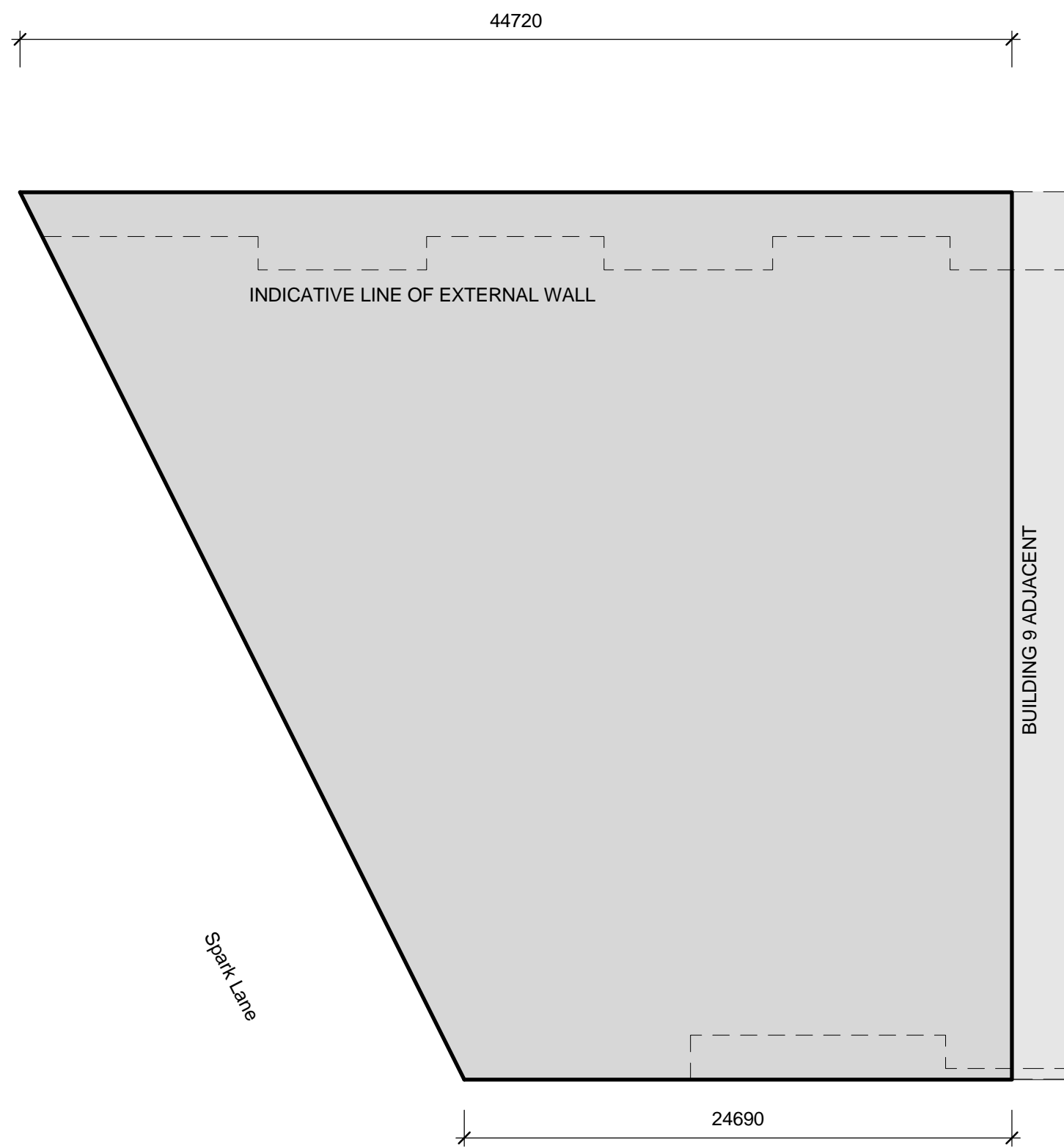
Melbourne 1 Nicholson Street
Melbourne VIC 3000 Australia
T 03 8664 6200 F 03 8664 6300
email mel@batesmart.com.au
http://www.batesmart.com.au

Bates Smart Pty Ltd ABN 70 004 999 400

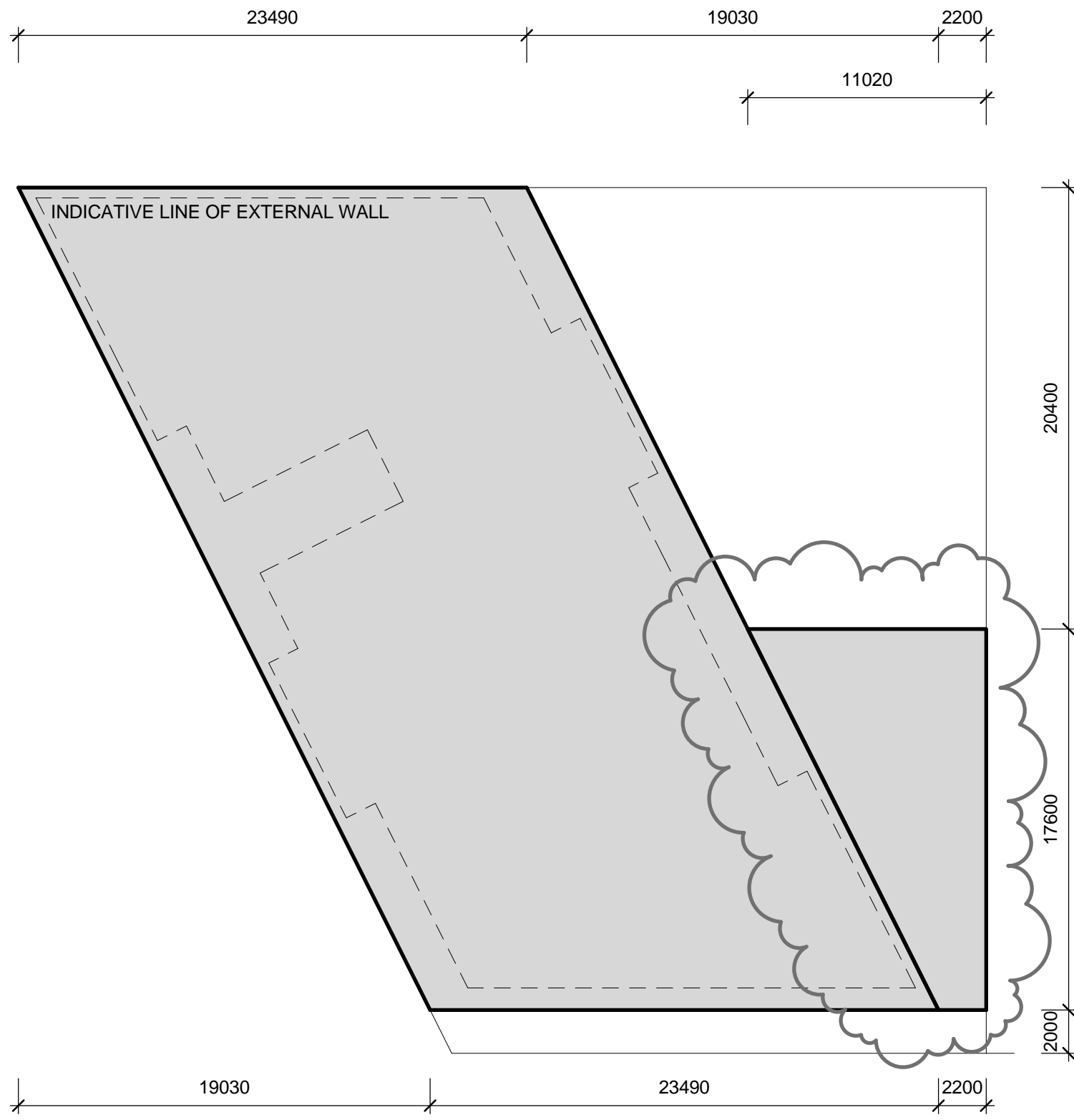
BATESSMART™



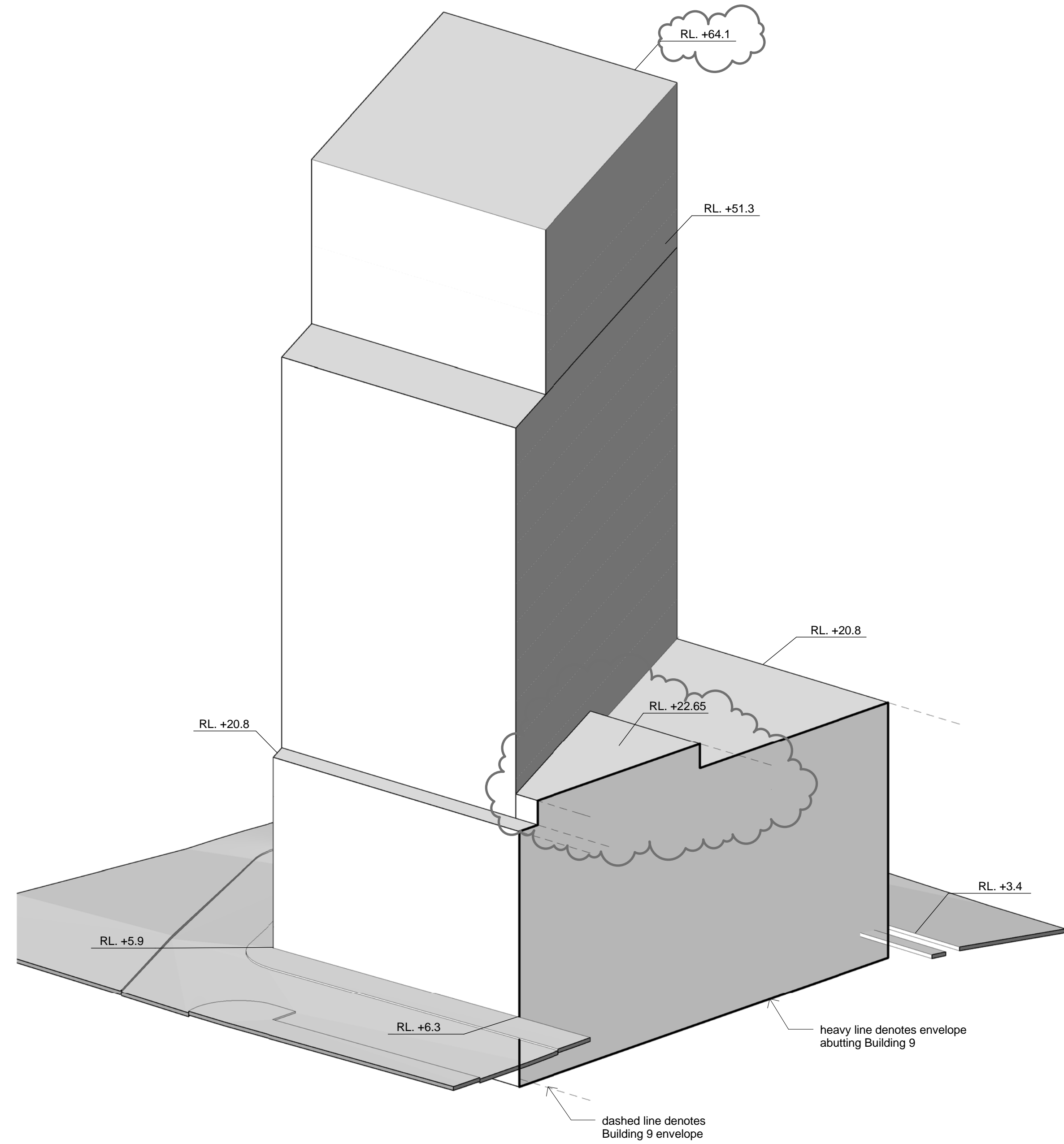
3 Typical High Level Plan
DA3-012 1 : 250



1 Ground Level Plan
DA3-012 1 : 250



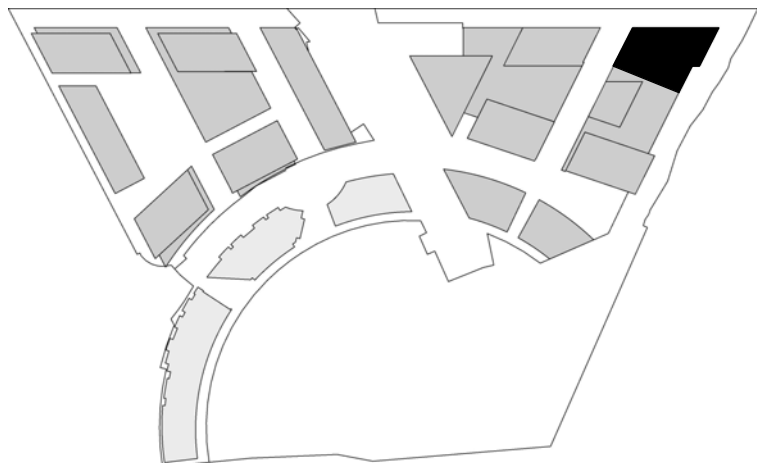
2 Typical Level Plan
DA3-012 1 : 250



4 3D View
DA3-012



NOTE: AWNINGS, SUN CONTROL DEVICES, TELECOMMUNICATION FEATURES AND THE LIKE ARE PERMITTED TO ENCROACH BEYOND THE BUILDING ENVELOPES



Amendments since Revision A
Envelope reduced at South and East to increase building separation
Setback to Cooks River Increased

E	03.06.13	FOR APPROVAL	AW	MA
D	11.11.11	FOR APPROVAL	DL	MA
C	18.04.11	FOR APPROVAL	AW	MA
B	10.12.10	FOR APPROVAL	JK	MA
A	18.06.10	FOR APPROVAL	AW	MA
Revision	Date	Description	Initial	Checked

Discovery Point, Wolli Creek Concept Plan

Building 10 Envelope Parameters

Check all dimensions and site conditions prior to commencement of any work, the purchase or ordering of any materials, fittings, plant, services or equipment and the preparation of shop drawings and or the fabrication of any components.
Do not scale drawings - refer to figured dimensions only. Any discrepancies shall immediately be referred to the architect for clarification.
All drawings may not be reproduced or distributed without prior permission from the architect.

Scale	1:250 @ A1 , 1:500 @ A3		
Drawn	AW	Checked	MA
Project no.	S11191		
Status	PLANNING		
Plot Date	3/06/2013 4:51:04 PM		
Plot File	C:\Temp\masterplan-discovery-111110_Central_WAY.rvt		
Drawing no.	DA3-012	Revision	E

FOR APPROVAL

Sydney 1/243 Liverpool Street
East Sydney NSW 2010 Australia
T 02 8354 5100 F 02 8354 5199
email syd@batesmart.com.au
http://www.batesmart.com.au

Melbourne 1 Nicholson Street
Melbourne VIC 3000 Australia
T 03 8664 6200 F 03 8664 6300
email mel@batesmart.com.au
http://www.batesmart.com.au

Bates Smart Pty Ltd ABN 70 004 999 400

BATESSMART™



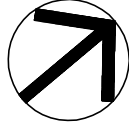
Notes:
Mid grey denotes area in which above ground car parking is allowable
Light grey denotes proposed location of carpark entrance ramps



G	05.06.13	Bldg10 entrance added to Spark Lane	AW	MA
F	13.10.12	Level 1 parking added to Bldg 1B/4	MA	MA
E	11.11.11	Bldg 8, 9, 10 set back from Cooks River	MA	MA
D	18.04.11	Bldg 7, 8, 10, 14 envelopes reduced	MA	MA
C	14.12.10	Entrance ramps Identified	AW	MA
B	10.12.10	Above ground parking in buildings 4 and 5 deleted	JK	MA
A	16.06.10	FOR APPROVAL	AV	MA
Revision	Date	Description	Initial	Checked

Discovery Point, Wollie Creek
Concept Plan
Extent of Above Ground Parking
Ground Floor Level

THIS DRAWING HAS BEEN PREPARED IN ACCORDANCE WITH DISCOVERY POINT CONCEPT PLAN URBAN DESIGN GUIDELINES.
Check all dimensions and site conditions prior to commencement of any work, the purchase or ordering of any materials, fittings, plant, services or equipment and the preparation of shop drawings and/or the fabrication of any components.
Do not scale drawings - refer to figured dimensions only. Any discrepancies shall immediately be referred to the architect for clarification.
All drawings may not be reproduced or distributed without prior permission from the architect.



Scale	1:500 @ A1 1:1000 @ A3
Drawn	APW
Checked	MA
Project No.	S11191
Status	PLANNING
Plot Date	5/6/2013 3:27:30 PM
Plot File	S:\11100-11199\11191_australand_wolliecreek\00_main\cad\plot...
Drawing No.	DA3-200
Revision	G

FOR APPROVAL

Sydney 1/243 Liverpool Street
East Sydney NSW 2010 Australia
T 02 8354 5100 F 02 8354 5199
email syd@batesmart.com.au
http://www.batesmart.com.au

Melbourne 1 Nicholson Street
Melbourne VIC 3000 Australia
T 03 8664 6200 F 03 8664 6300
email melb@batesmart.com.au
http://www.batesmart.com.au

Bates Smart Pty Ltd ABN 70 004 999 400

