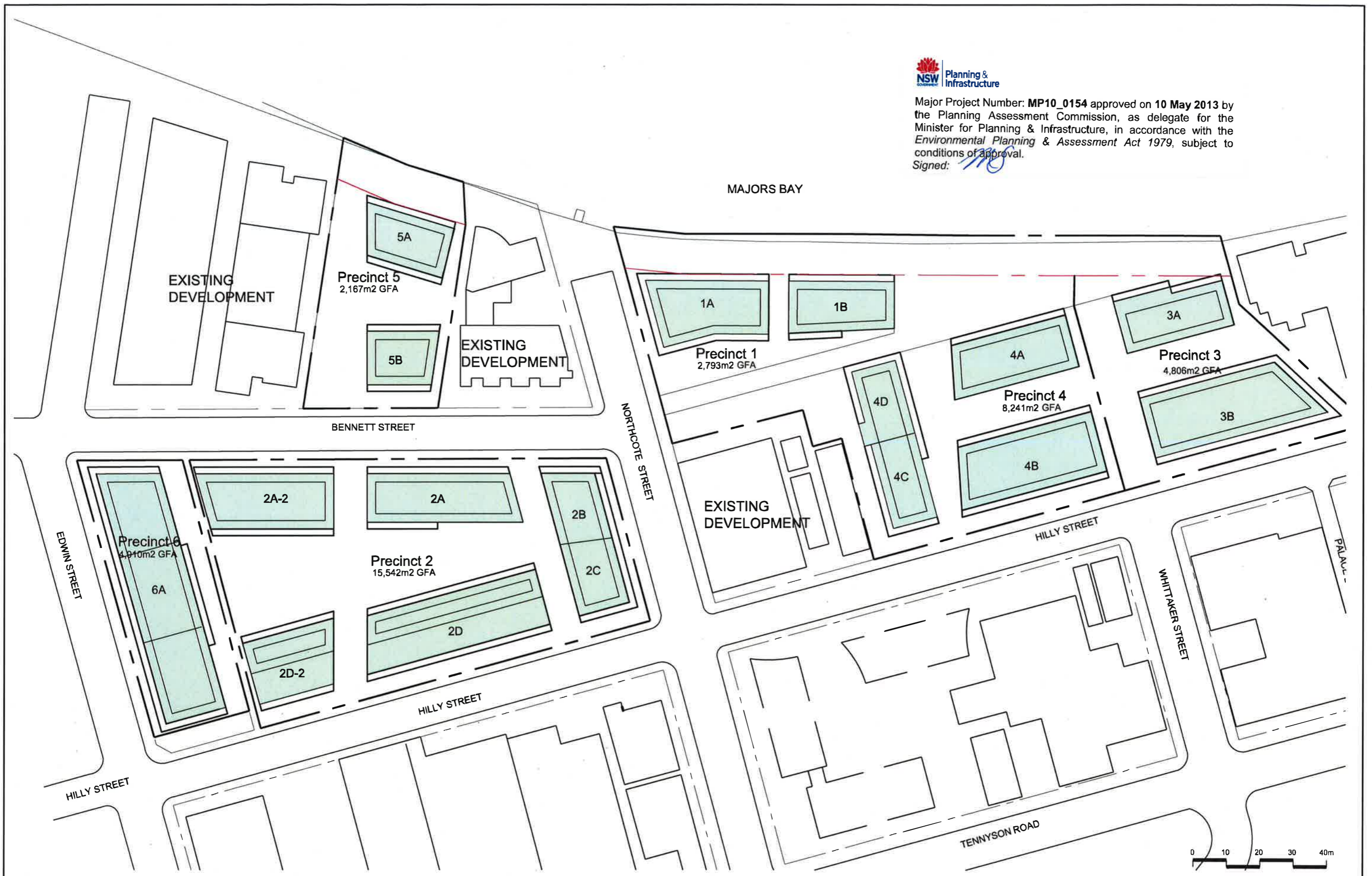
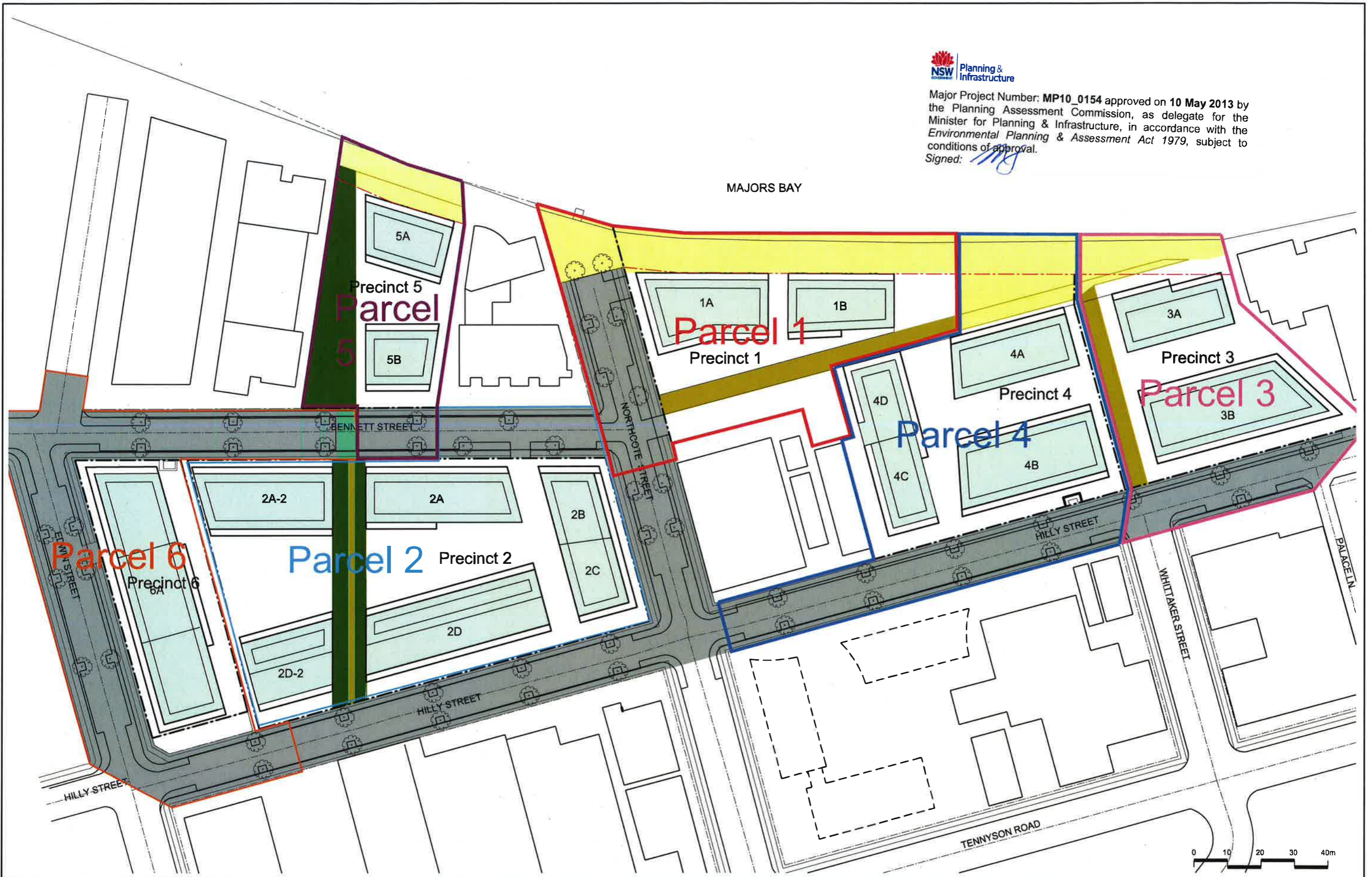


Major Project Number: **MP10_0154** approved on **10 May 2013** by the Planning Assessment Commission, as delegate for the Minister for Planning & Infrastructure, in accordance with the *Environmental Planning & Assessment Act 1979*, subject to conditions of approval.
Signed: *[Signature]*





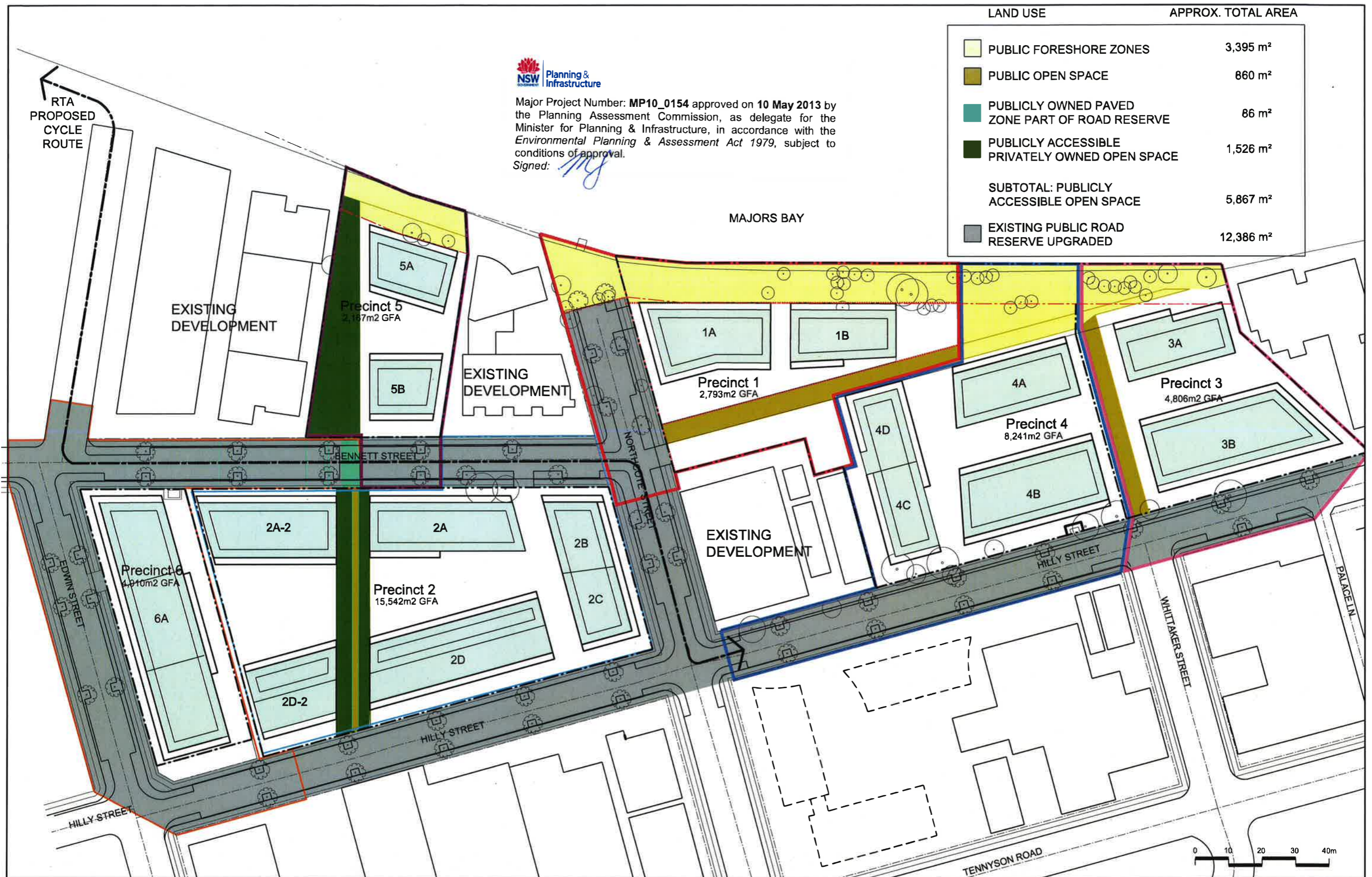


Major Project Number: **MP10_0154** approved on **10 May 2013** by the Planning Assessment Commission, as delegate for the Minister for Planning & Infrastructure, in accordance with the *Environmental Planning & Assessment Act 1979*, subject to conditions of approval.
Signed: *[Signature]*

LAND USE

APPROX. TOTAL AREA

	PUBLIC FORESHORE ZONES	3,395 m ²
	PUBLIC OPEN SPACE	860 m ²
	PUBLICLY OWNED PAVED ZONE PART OF ROAD RESERVE	86 m ²
	PUBLICLY ACCESSIBLE PRIVATELY OWNED OPEN SPACE	1,526 m ²
SUBTOTAL: PUBLICLY ACCESSIBLE OPEN SPACE		5,867 m ²
	EXISTING PUBLIC ROAD RESERVE UPGRADED	12,386 m ²



Majors Bay Development for Mortlake Consolidated Pty Ltd

COX

PUBLIC DOMAIN PLAN

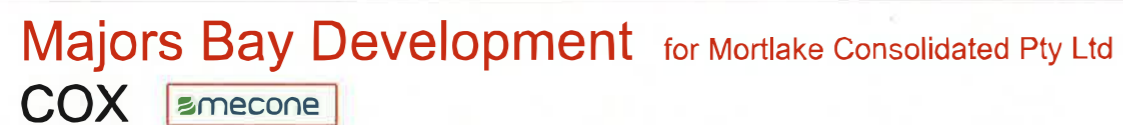
Drawing Number_REV
CP_02_05_05

Date
October 2012

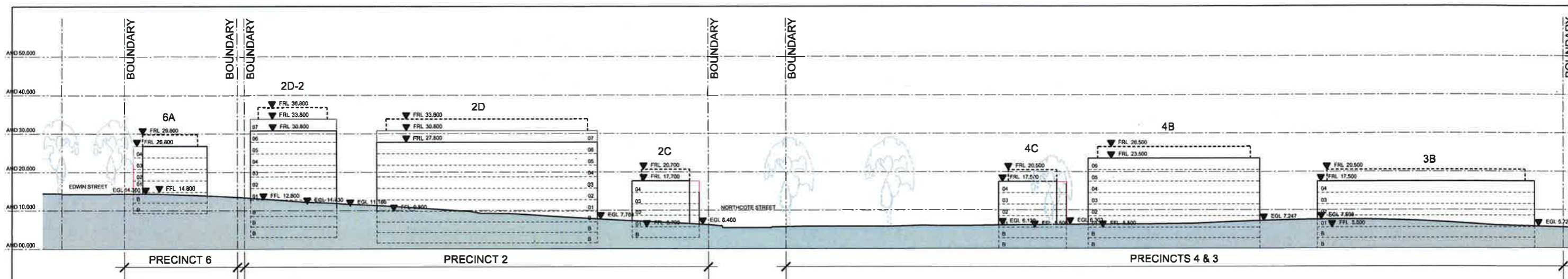


© 2006 COX

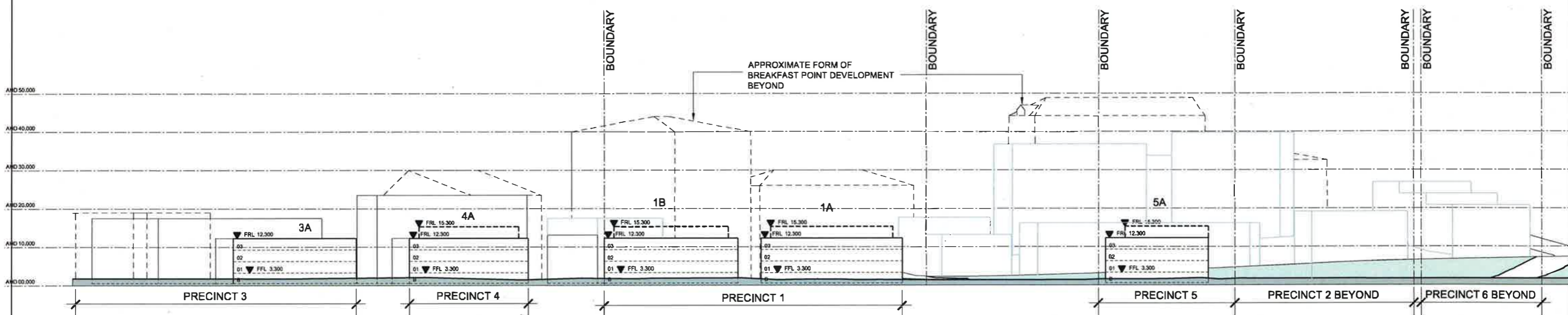
- Deep Soil Zone
- Basement Extent
- Rainwater Harvesting
(indicative location)



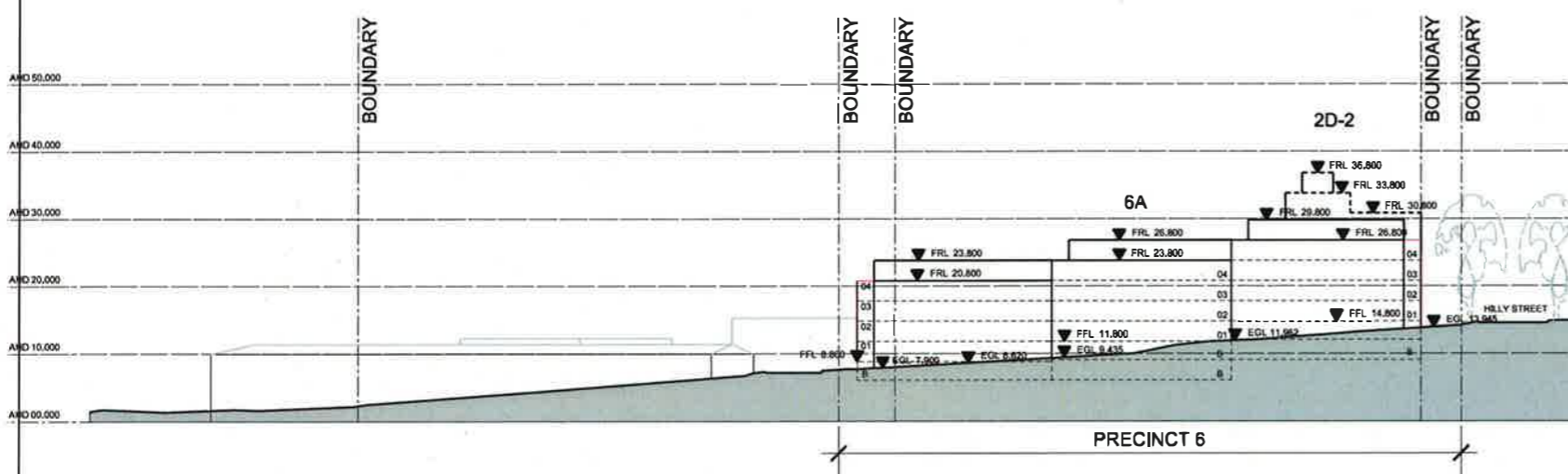
Drawing Number_REV	CP_02_06_05
Date	October 2012



HILLY STREET ELEVATION



MAJORS BAY ELEVATION



EDWIN STREET NORTH ELEVATION



Major Project Number: **MP10_0154** approved on **10 May 2013** by the Planning Assessment Commission, as delegate for the Minister for Planning & Infrastructure, in accordance with the *Environmental Planning & Assessment Act 1979*, subject to conditions of approval.
Signed: *[Signature]*

LEGEND ABBREVIATIONS

FRL = FINISHED ROOF LEVEL (MAX) IN AHD
AGF = ASSUMED GROUND FLOOR LEVEL
EGL = EXISTING GROUND LEVEL AS SURVEYED
AHD = HEIGHT IN m to AUSTRALIAN HEIGHT DATUM

LEGEND COLORS

RESIDENTIAL
 BALCONY / ARTICULATION ZONE TO RESIDENTIAL
 PLANT ZONE
 CAR PARK



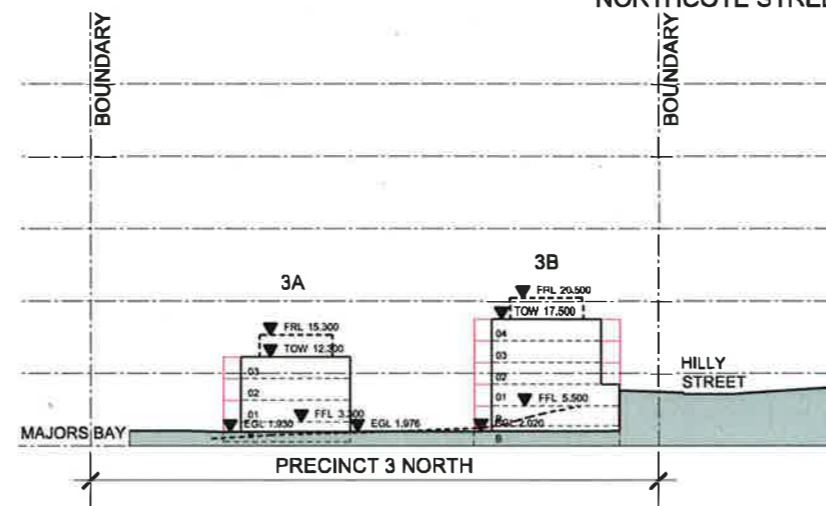
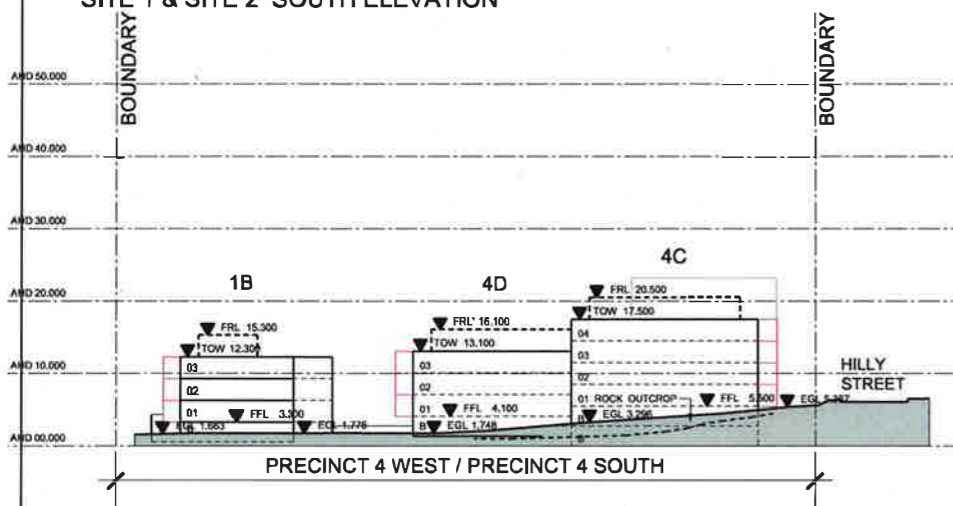
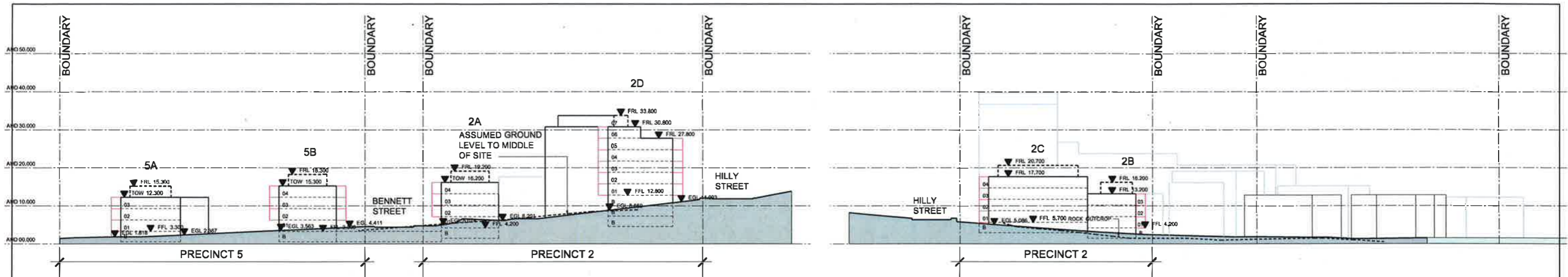
Majors Bay Development for Mortlake Consolidated Pty Ltd

COX

SITE ELEVATIONS

Drawing Number_REV
CP_02_08_03

Date
October 2012



LEGEND COLORS

- RESIDENTIAL
- BALCONY / ARTICULATION ZONE TO RESIDENTIAL
- PLANT ZONE
- CAR PARK

LEGEND ABBREVIATIONS

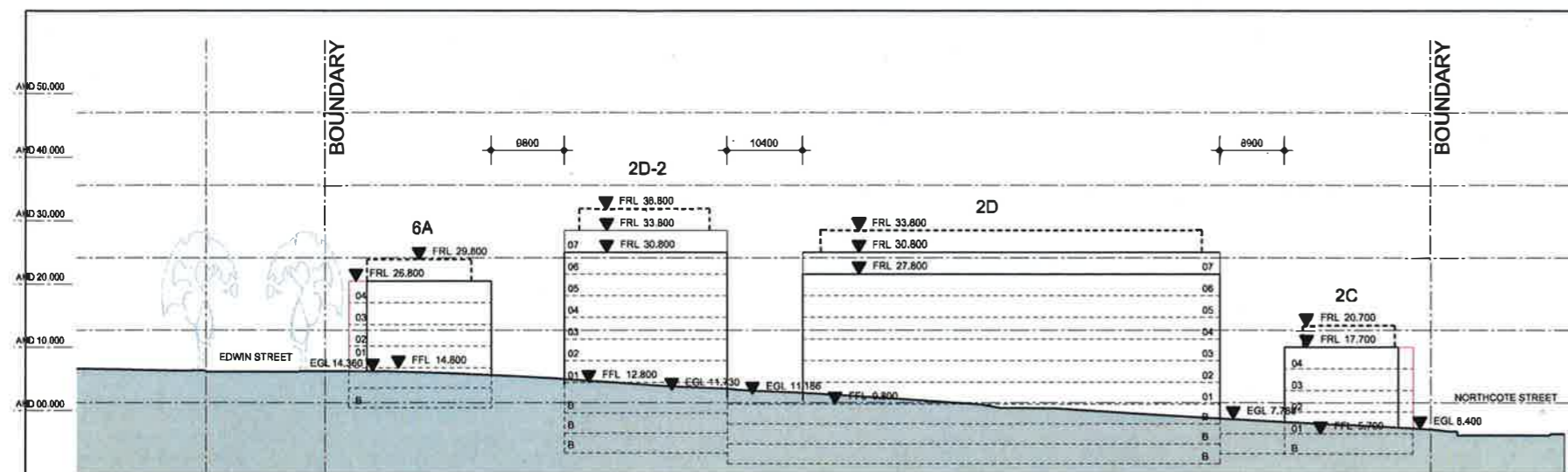
- FRL = FINISHED ROOF LEVEL (MAX) IN AHD
- AGF = ASSUMED GROUND FLOOR LEVEL
- EGL = EXISTING GROUND LEVEL AS SURVEYED
- AHD = HEIGHT IN m to AUSTRALIAN HEIGHT DATUM



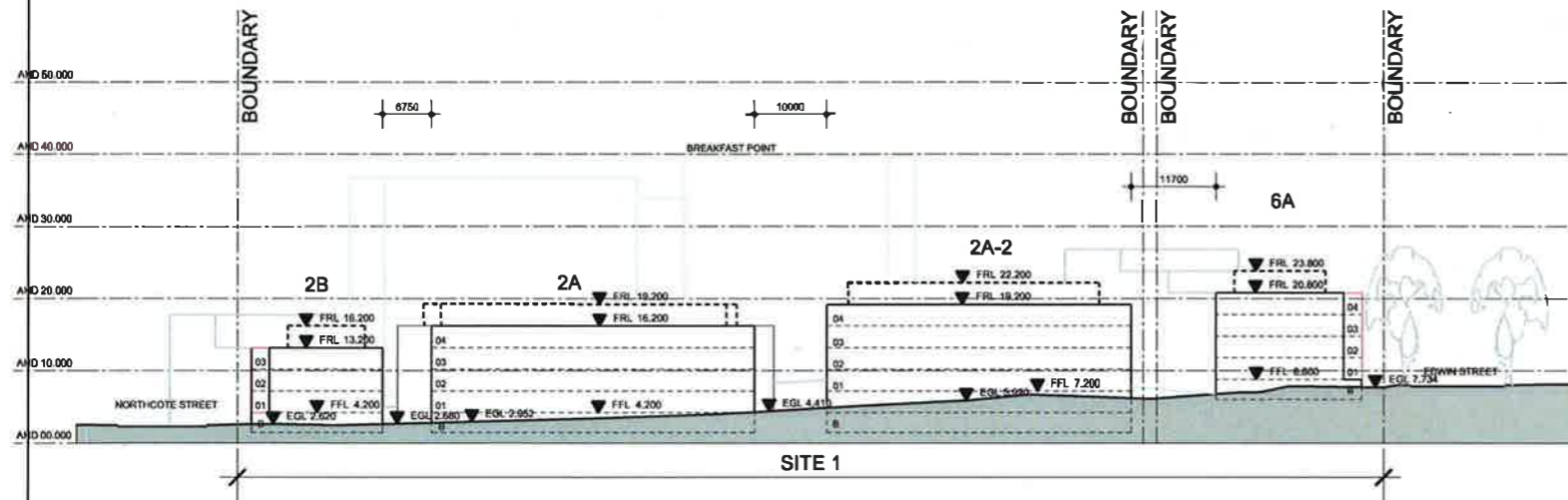
Major Project Number: **MP10_0154** approved on **10 May 2013** by the Planning Assessment Commission, as delegate for the Minister for Planning & Infrastructure, in accordance with the *Environmental Planning & Assessment Act 1979*, subject to conditions of approval.

Signed:

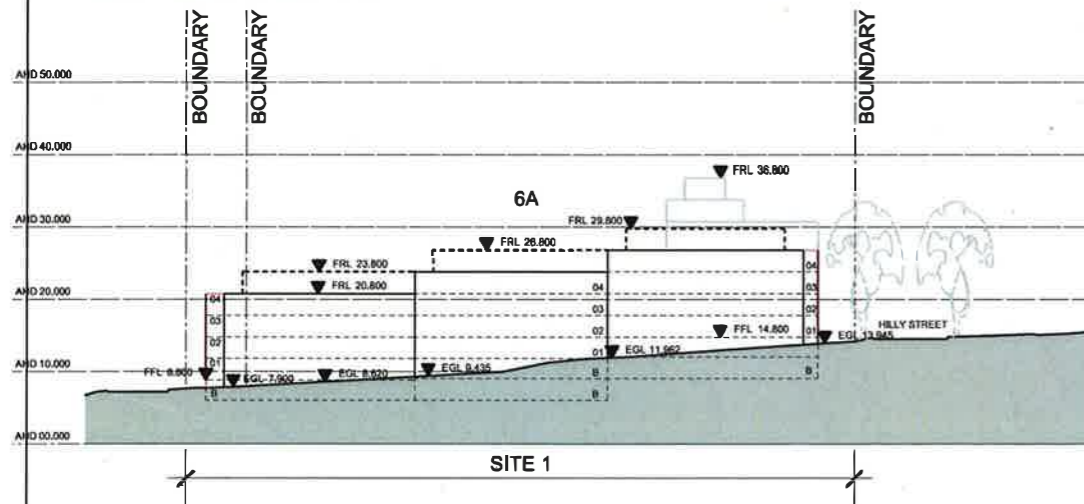




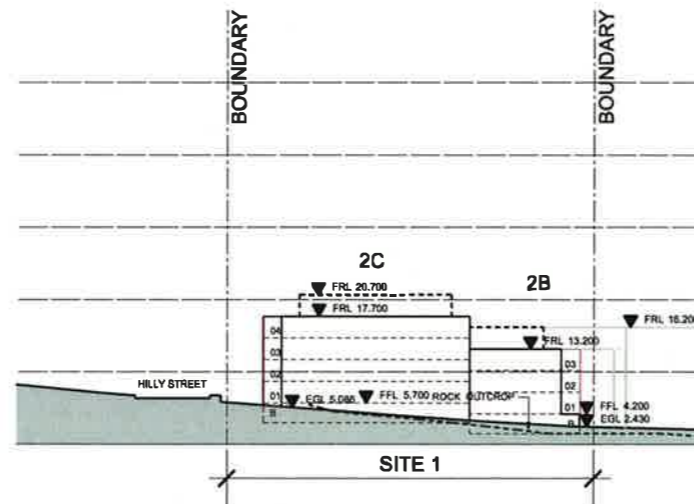
SITE 1 EAST ELEVATION



SITE 1 WEST ELEVATION



SITE 1 SOUTH ELEVATION



SITE 1 NORTH ELEVATION

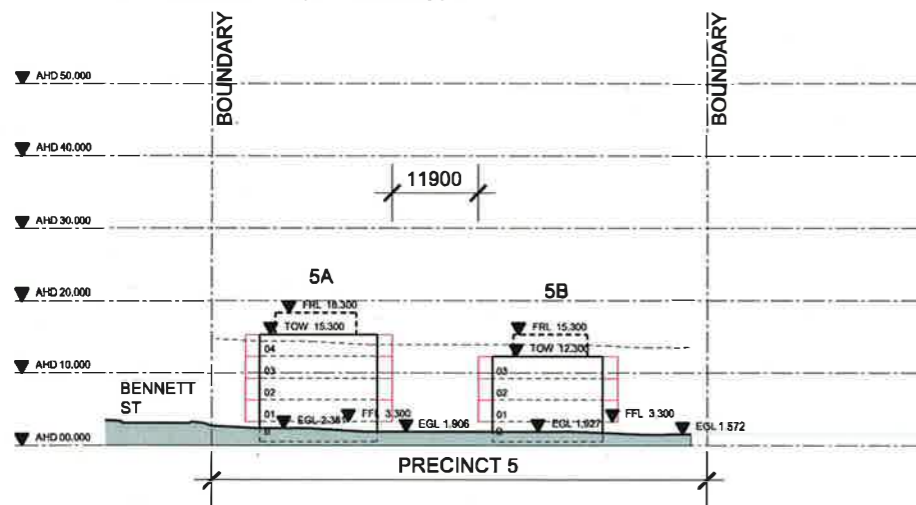
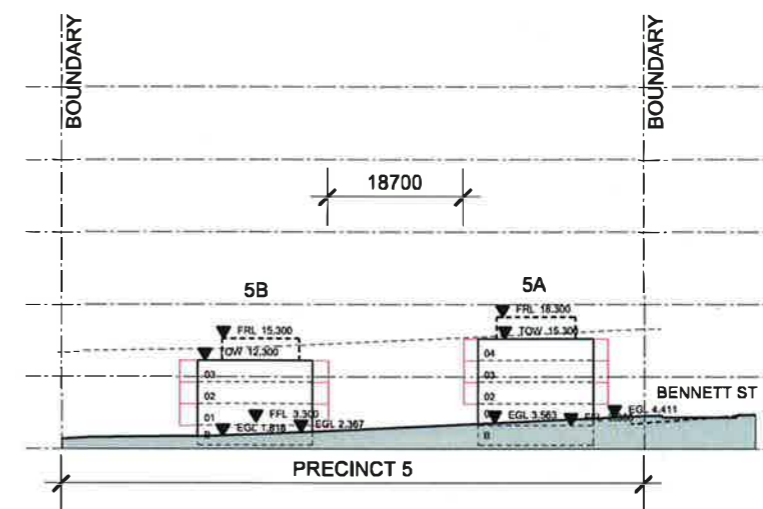
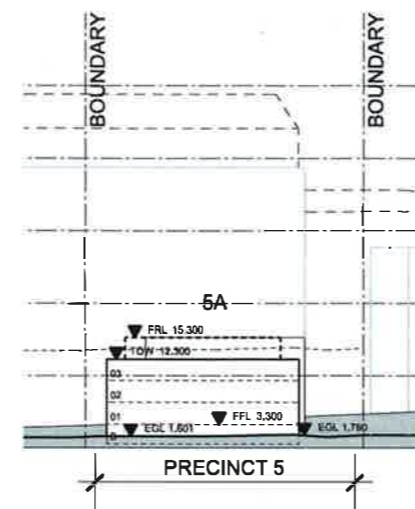
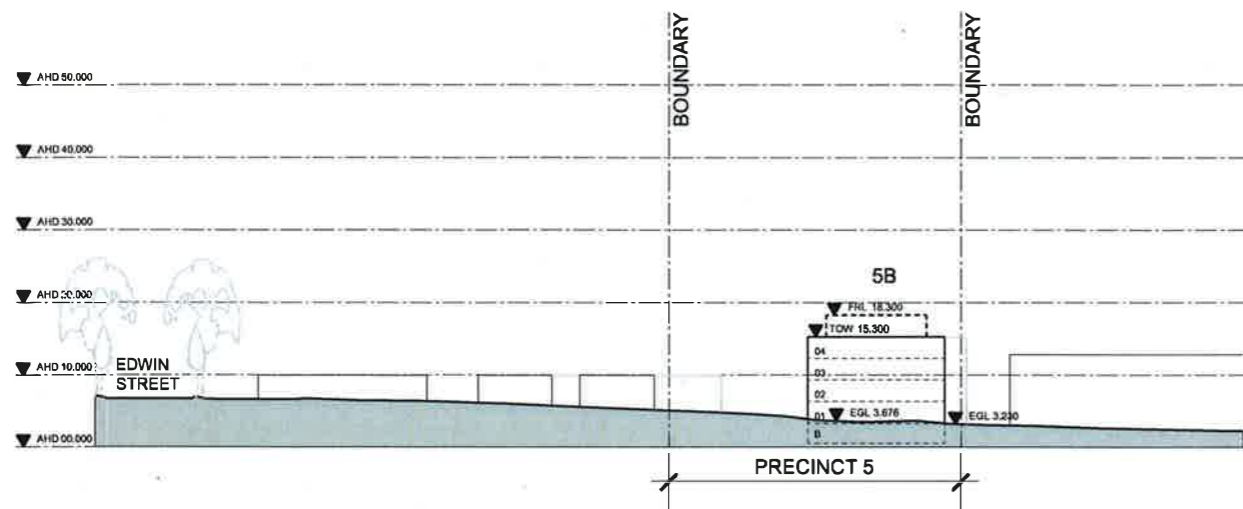



Major Project Number: **MP10_0154** approved on **10 May 2013** by the Planning Assessment Commission, as delegate for the Minister for Planning & Infrastructure, in accordance with the *Environmental Planning & Assessment Act 1979*, subject to conditions of approval.

LEGEND COLORS	
	RESIDENTIAL
	BALCONY / ARTICULATION ZONE TO RESIDENTIAL
	PLANT ZONE
	CAR PARK

LEGEND ABBREVIATIONS	
FRL	= FINISHED ROOF LEVEL (MAX) IN AHD
AGF	= ASSUMED GROUND FLOOR LEVEL
EGL	= EXISTING GROUND LEVEL AS SURVEYED
AHD	= HEIGHT IN m to AUSTRALIAN HEIGHT DATUM





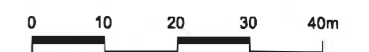
Major Project Number: **MP10_0154** approved on **10 May 2013** by the Planning Assessment Commission, as delegate for the Minister for Planning & Infrastructure, in accordance with the *Environmental Planning & Assessment Act 1979*, subject to conditions of approval.
Signed: 

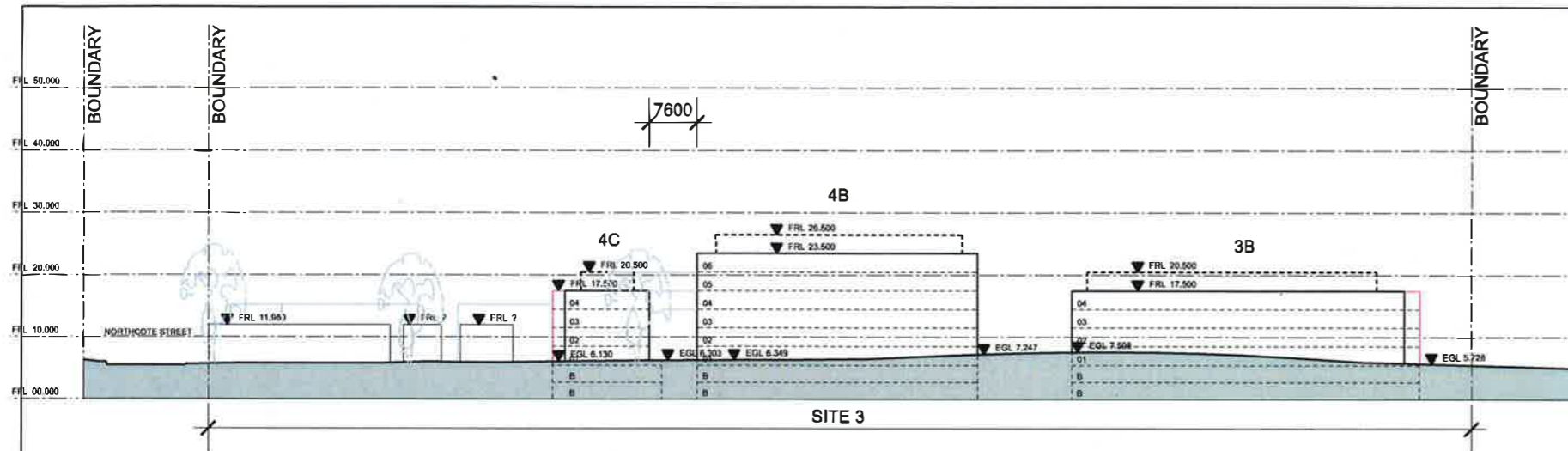
LEGEND ABBREVIATIONS

FRL = FINISHED ROOF LEVEL (MAX) IN AHD
AGF = ASSUMED GROUND FLOOR LEVEL
EGL = EXISTING GROUND LEVEL AS SURVEYED
AHD = HEIGHT IN m to AUSTRALIAN HEIGHT DATUM

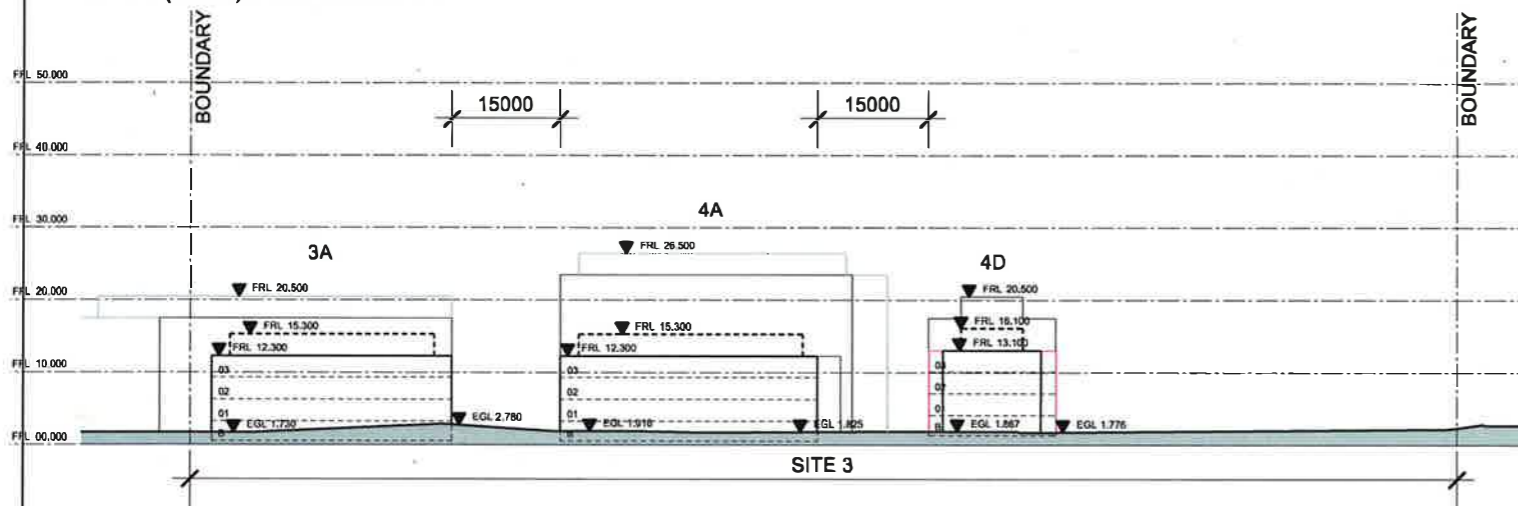
LEGEND COLORS

RESIDENTIAL
BALCONY / ARTICULATION ZONE TO RESIDENTIAL
PLANT ZONE
CAR PARK

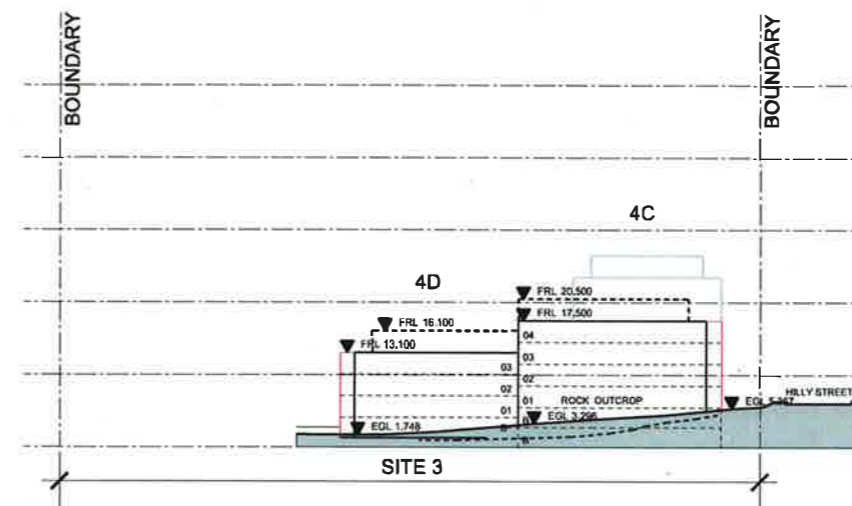




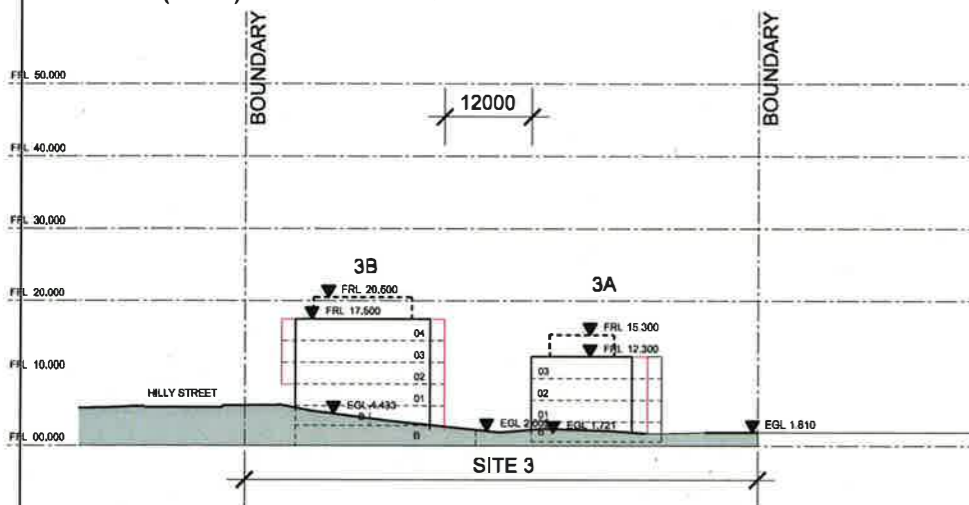
SITE 3 (EAST) EAST ELEVATION



SITE 3 (EAST) WEST ELEVATION



SITE 3 (EAST) SOUTH ELEVATION



SITE 3 (EAST) NORTH ELEVATION



Major Project Number: **MP10_0154** approved on **10 May 2013** by the Planning Assessment Commission, as delegate for the Minister for Planning & Infrastructure, in accordance with the *Environmental Planning & Assessment Act 1979*, subject to conditions of approval.
Signed:

LEGEND ABBREVIATIONS

FRL = FINISHED ROOF LEVEL (MAX) IN AHD
AGF = ASSUMED GROUND FLOOR LEVEL
EGL = EXISTING GROUND LEVEL AS SURVEYED
AHD = HEIGHT IN m to AUSTRALIAN HEIGHT DATUM

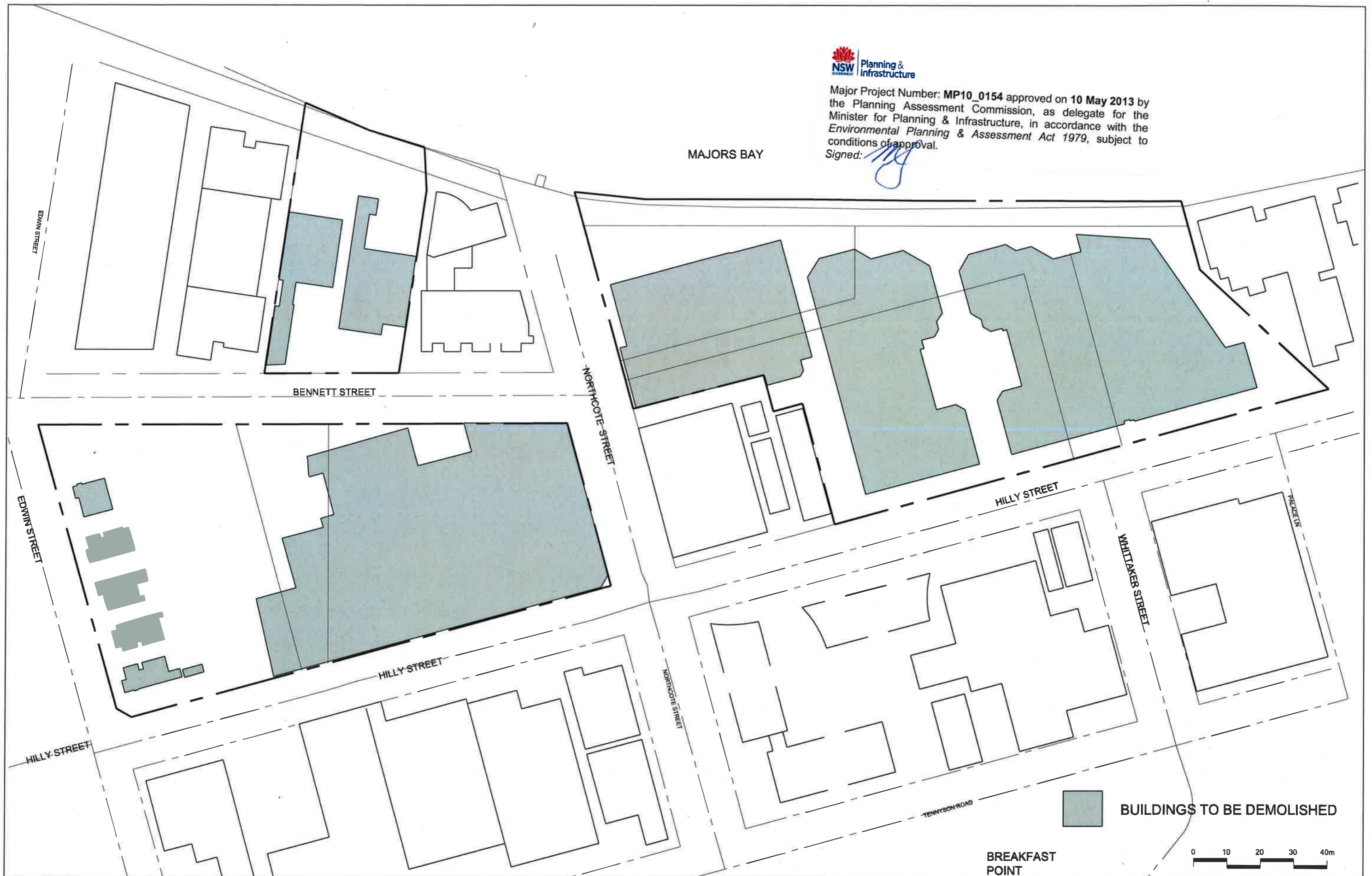
LEGEND COLORS

RESIDENTIAL
 BALCONY / ARTICULATION ZONE TO RESIDENTIAL
 PLANT ZONE
 CAR PARK



Major Project Number: MP10_0154 approved on 10 May 2013 by the Planning Assessment Commission, as delegate for the Minister for Planning & Infrastructure, in accordance with the Environmental Planning & Assessment Act 1979, subject to conditions of approval.
Signed: 

MAJORS BAY



Majors Bay Development for Mortlake Consolidated Pty Ltd

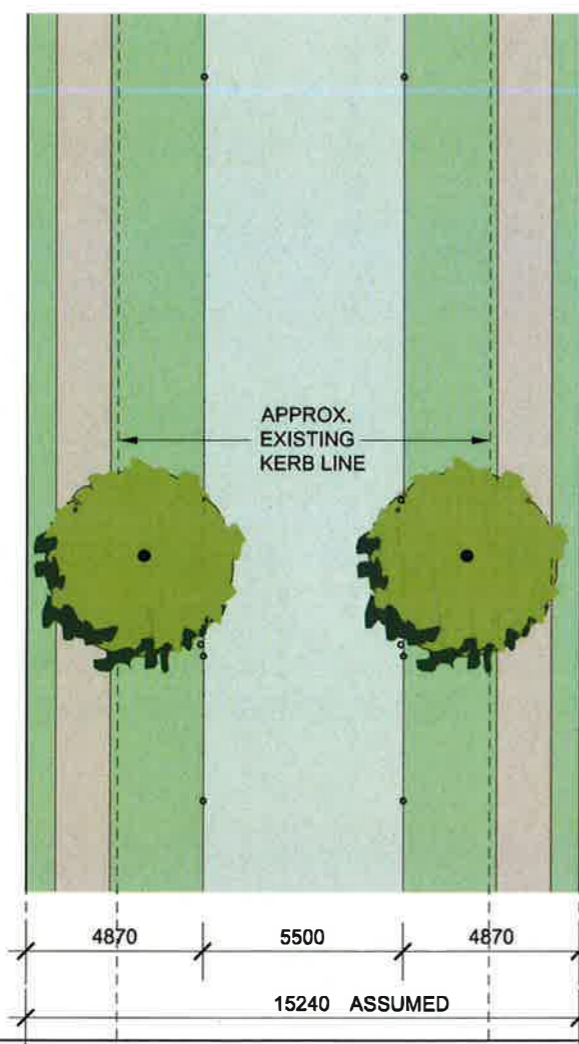
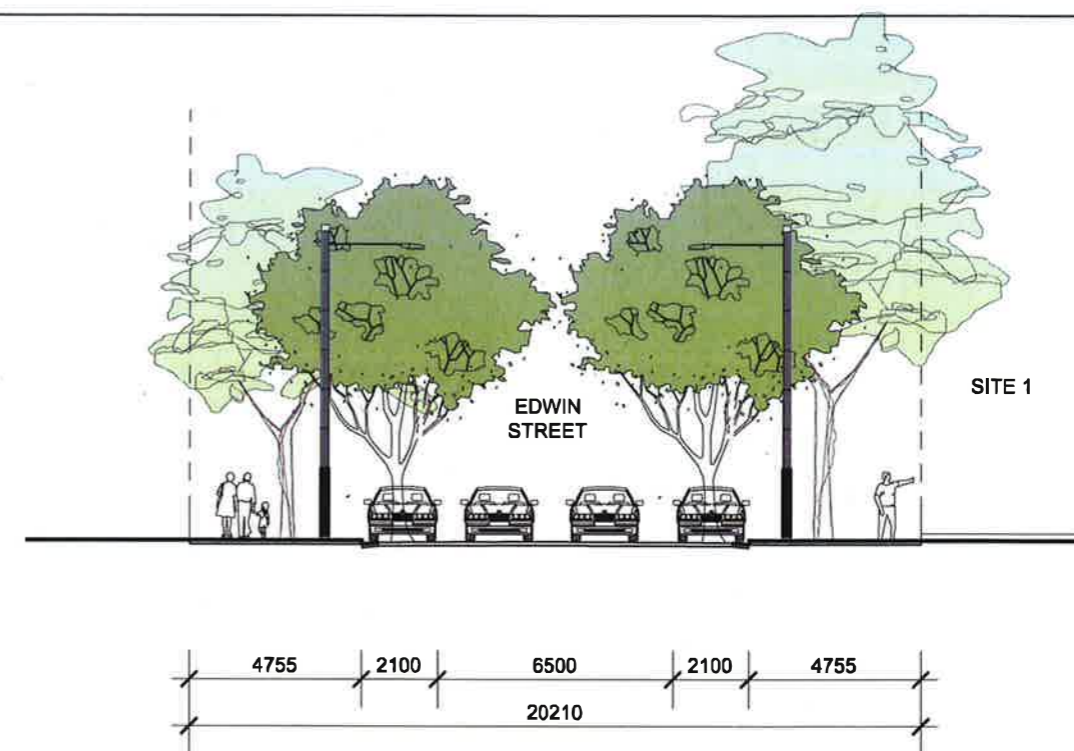
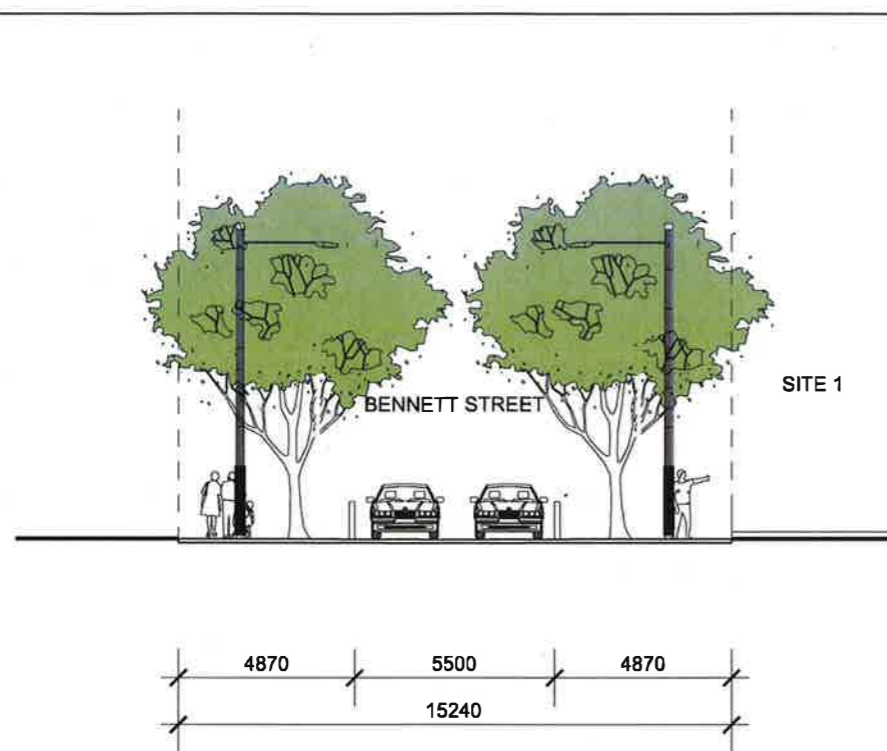
COX 

BUILDINGS TO BE DEMOLISHED

Drawing Number_REV
CP_02_14_03

Date
October 2012



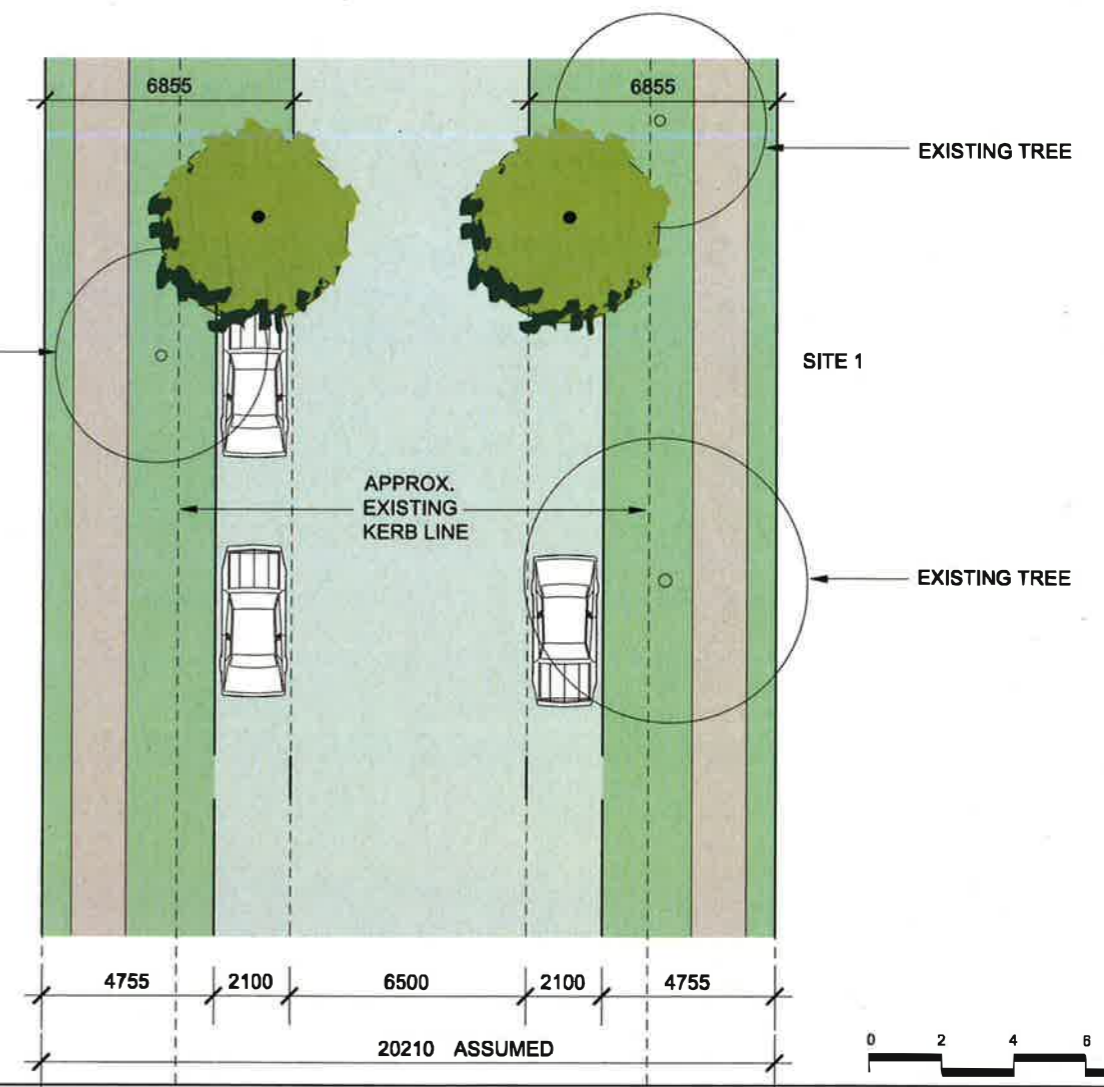


SITE 1



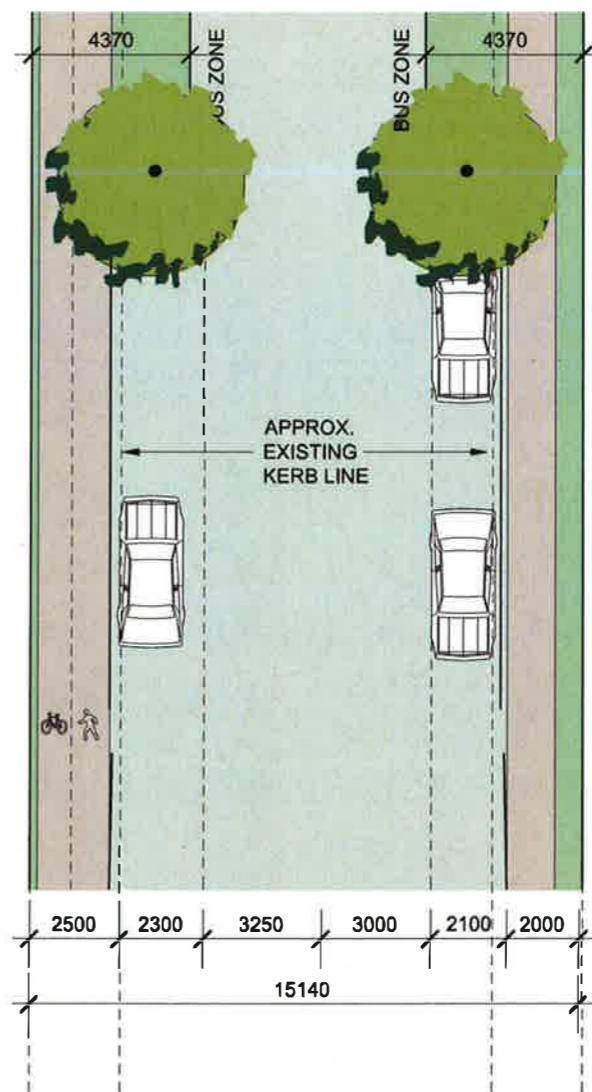
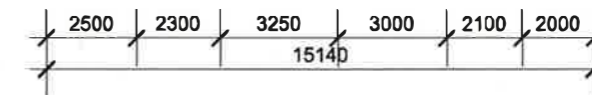
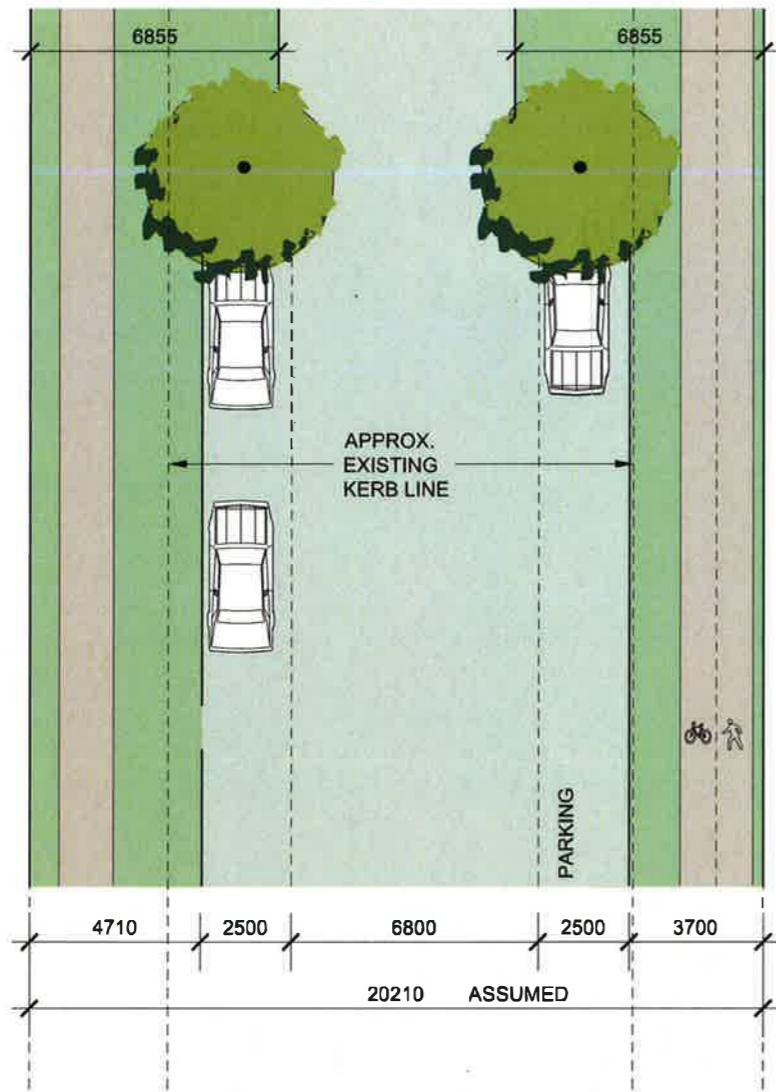
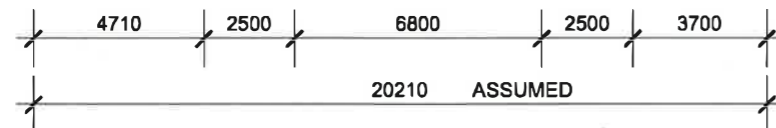
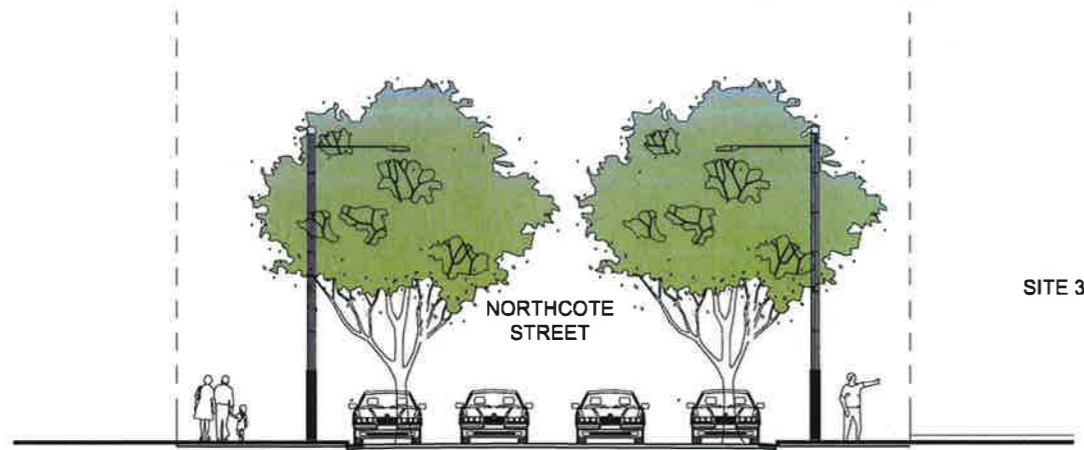
Major Project Number: **MP10_0154** approved on **10 May 2013** by the Planning Assessment Commission, as delegate for the Minister for Planning & Infrastructure, in accordance with the *Environmental Planning & Assessment Act 1979*, subject to conditions of approval.
Signed: *[Signature]*

EXISTING TREE



SITE 1



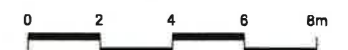


SITE 3

SITE 1



Major Project Number: **MP10_0154** approved on **10 May 2013** by the Planning Assessment Commission, as delegate for the Minister for Planning & Infrastructure, in accordance with the *Environmental Planning & Assessment Act 1979*, subject to conditions of approval.
Signed: *[Signature]*



Majors Bay Development for Mortlake Consolidated Pty Ltd

COX

PROPOSED STREET SECTIONS

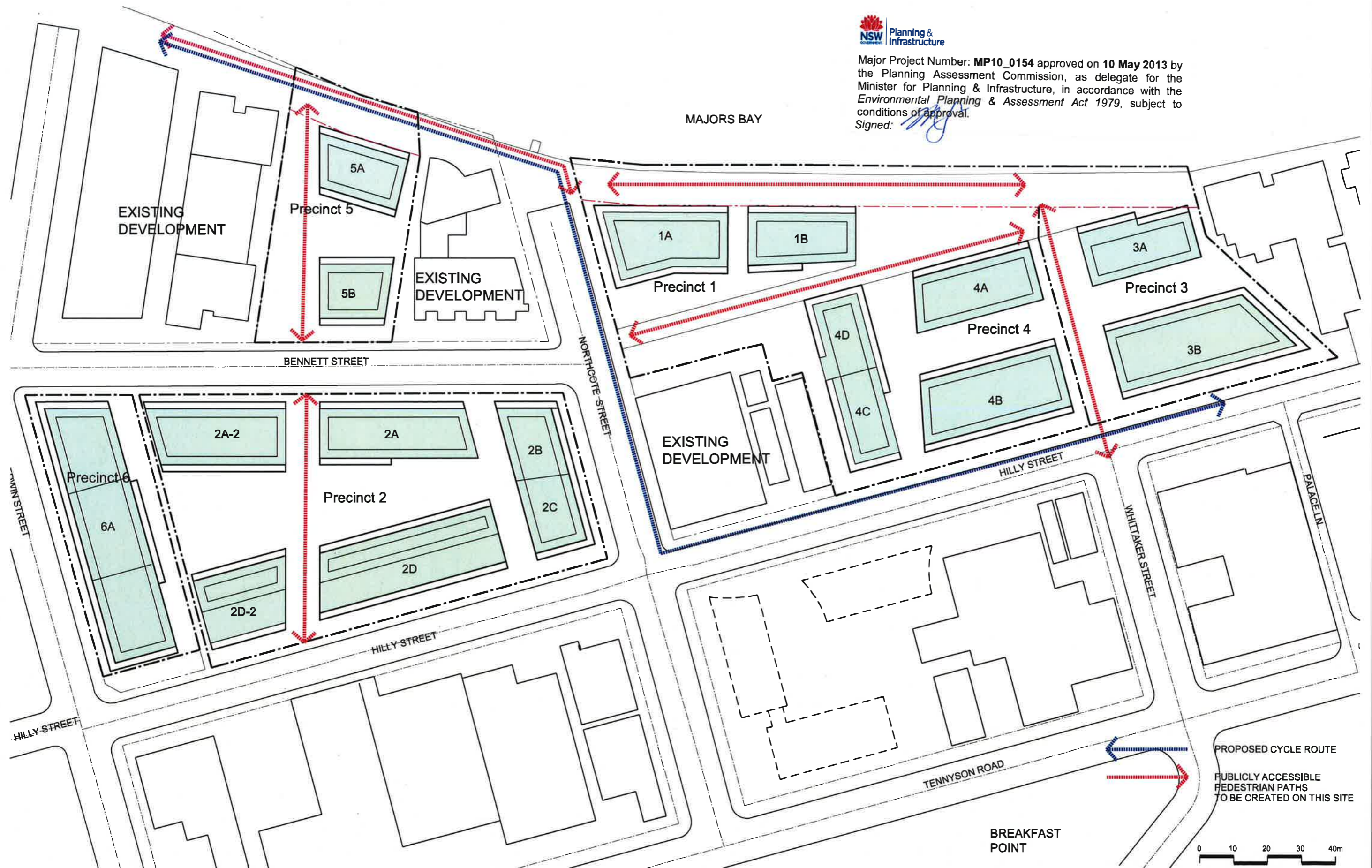
Drawing Number_REV
CP_02_16_02

Date
October 2012

© 2006 COX

Major Project Number: **MP10_0154** approved on **10 May 2013** by the Planning Assessment Commission, as delegate for the Minister for Planning & Infrastructure, in accordance with the *Environmental Planning & Assessment Act 1979*, subject to conditions of approval.
Signed: *[Signature]*

MAJORS BAY

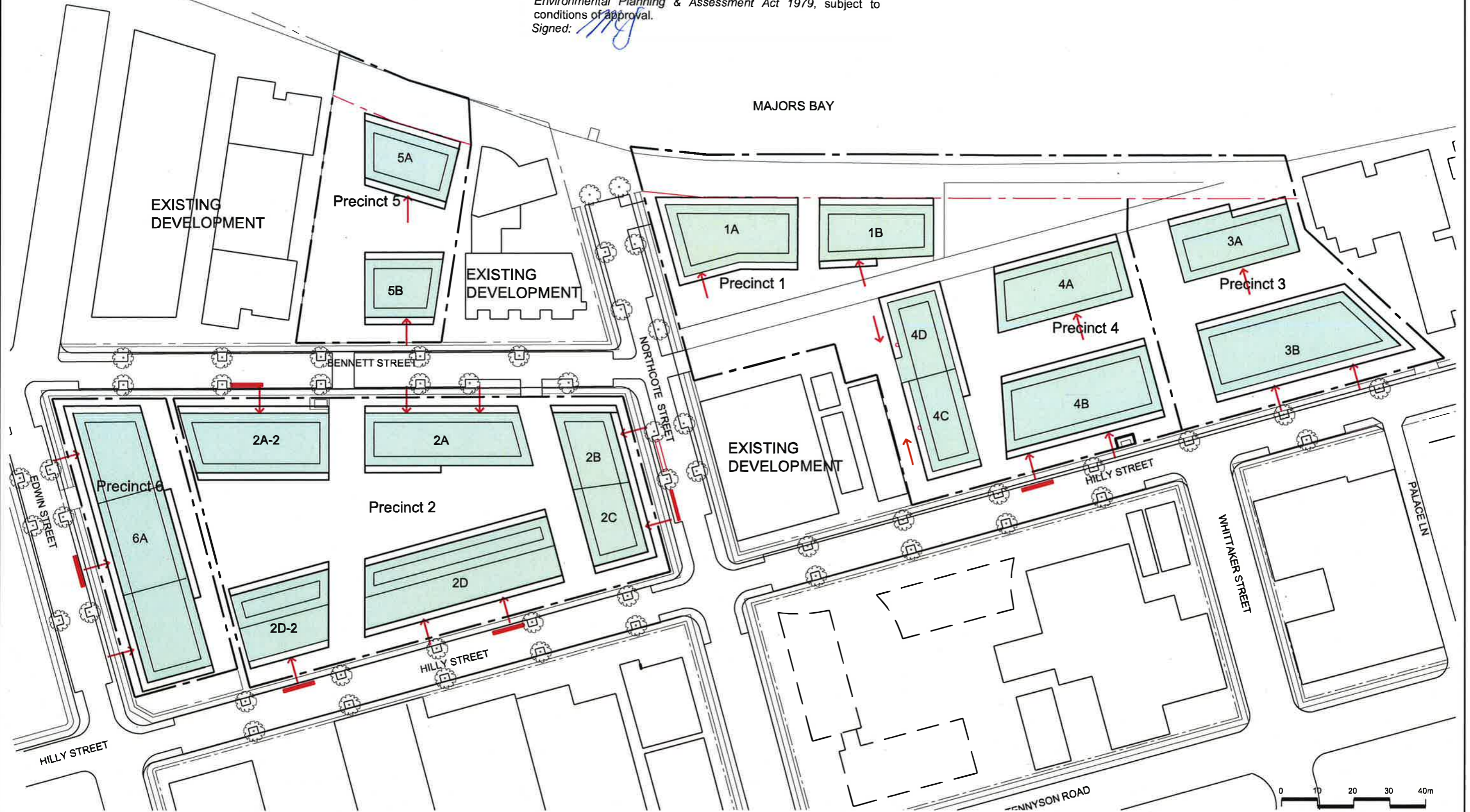


PEDESTRIAN AND CYCLE NETWORKS



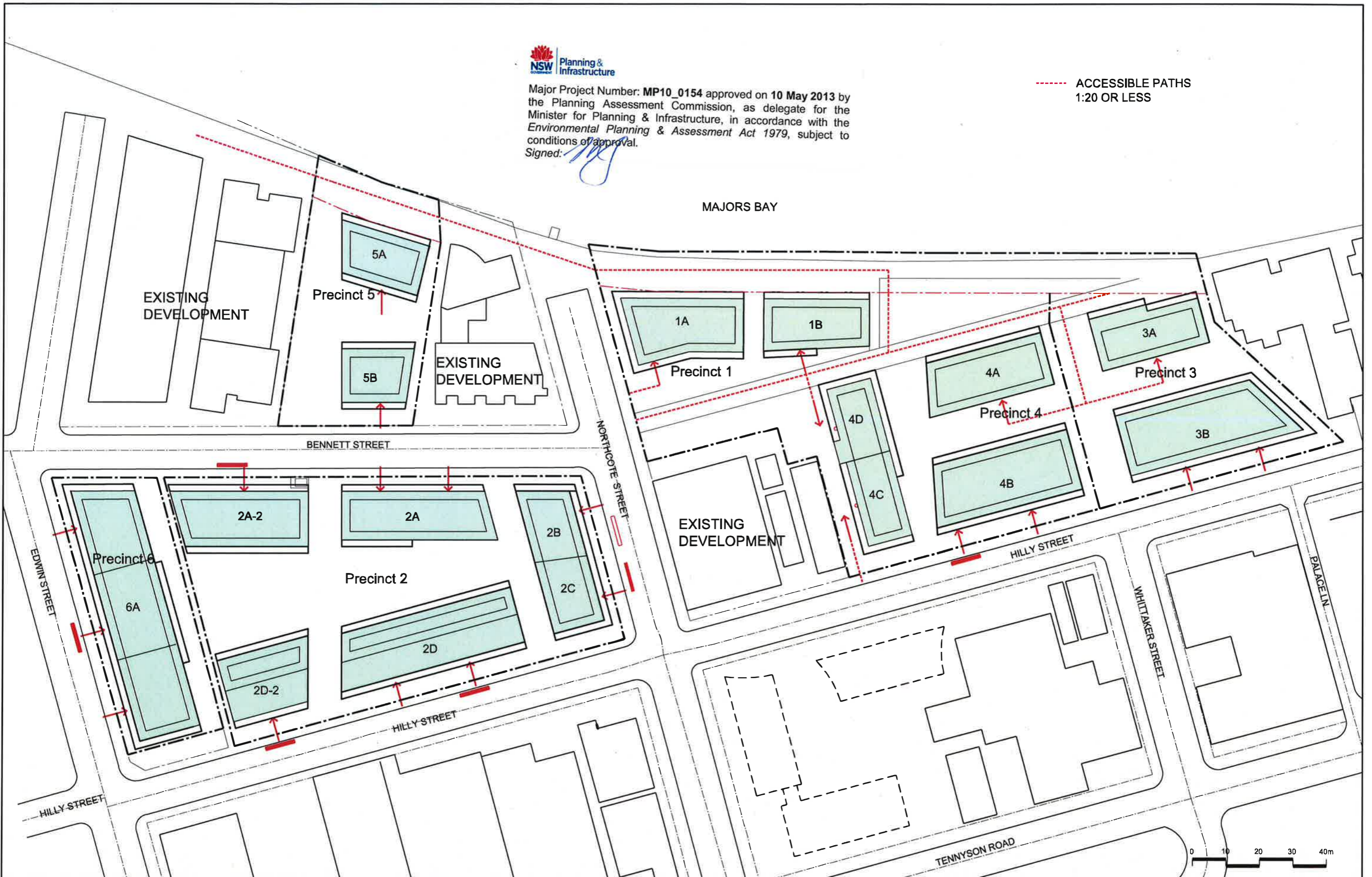
Major Project Number: **MP10_0154** approved on **10 May 2013** by the Planning Assessment Commission, as delegate for the Minister for Planning & Infrastructure, in accordance with the *Environmental Planning & Assessment Act 1979*, subject to conditions of approval.
Signed: *[Signature]*

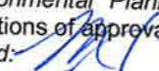
◦ ← PUBLIC ENTRY POINTS



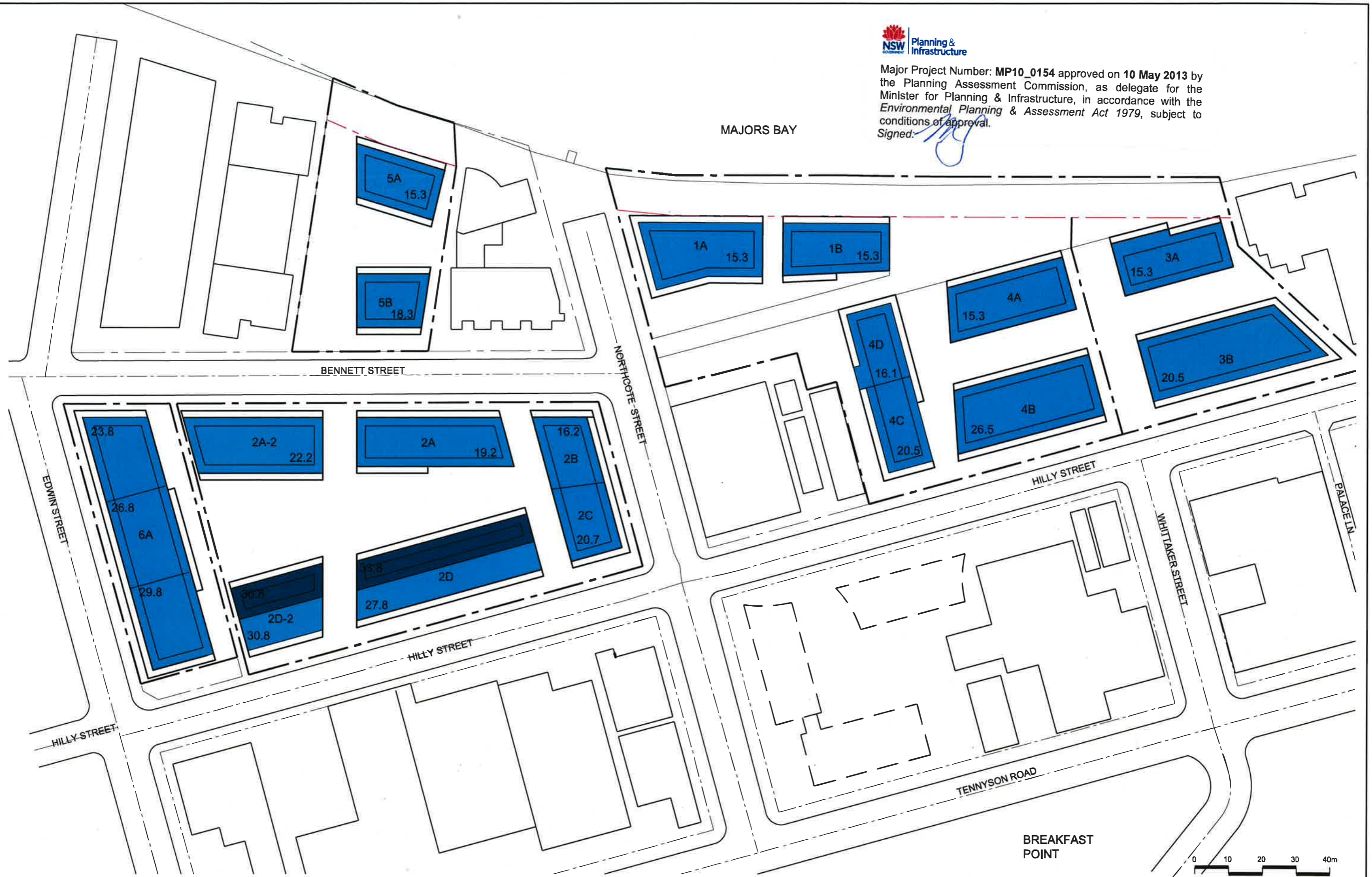
Major Project Number: **MP10_0154** approved on **10 May 2013** by the Planning Assessment Commission, as delegate for the Minister for Planning & Infrastructure, in accordance with the *Environmental Planning & Assessment Act 1979*, subject to conditions of approval.
Signed: *[Signature]*

--- ACCESSIBLE PATHS
1:20 OR LESS



Major Project Number: **MP10_0154** approved on **10 May 2013** by the Planning Assessment Commission, as delegate for the Minister for Planning & Infrastructure, in accordance with the *Environmental Planning & Assessment Act 1979*, subject to the conditions of approval.
Signed: 

MAJORS BAY



Major Project Number: **MP10_0154** approved on **10 May 2013** by the Planning Assessment Commission, as delegate for the Minister for Planning & Infrastructure, in accordance with the Environmental Planning & Assessment Act 1979, subject to conditions of approval.
Signed: *[Signature]*

