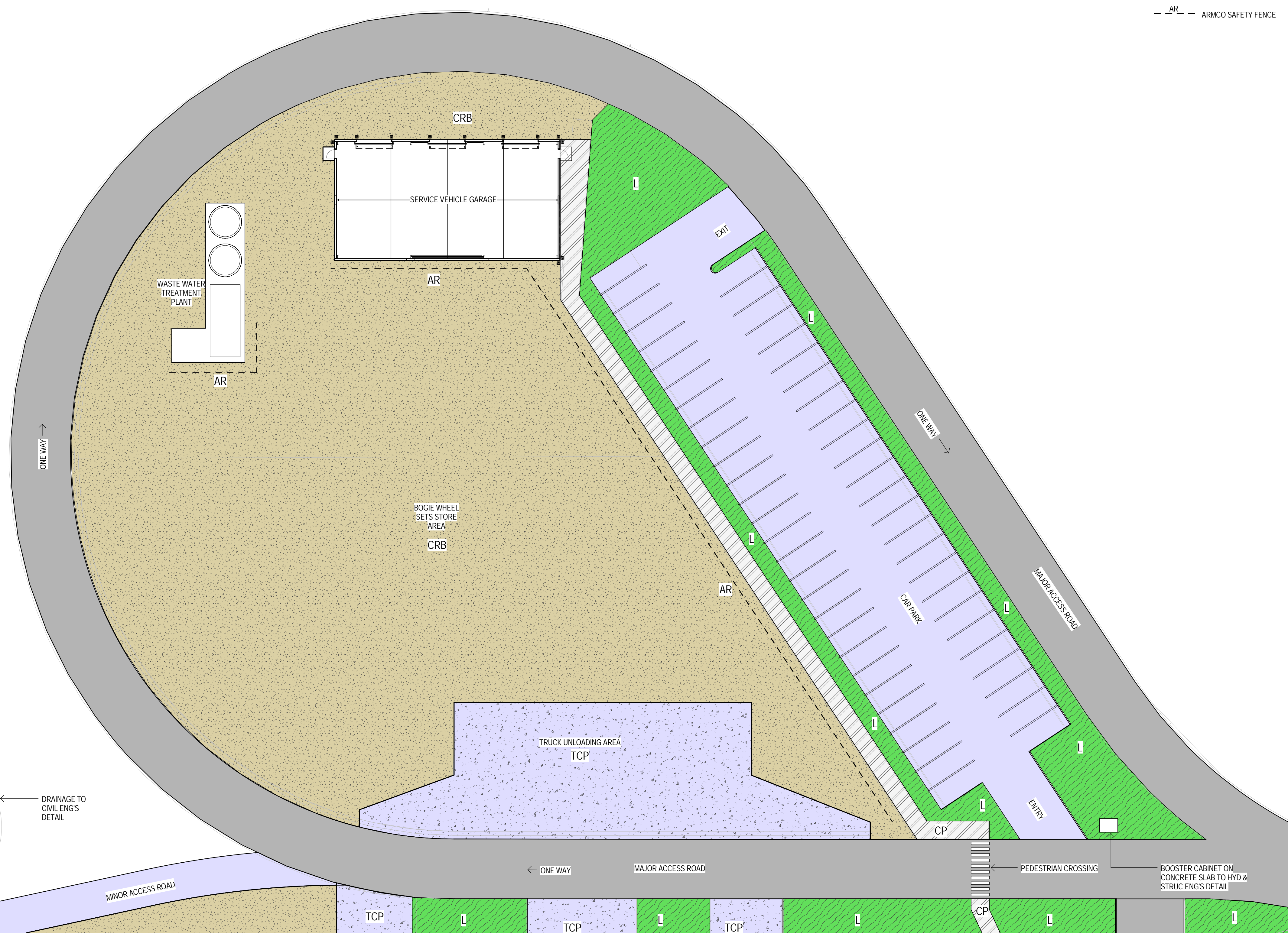




- LEGEND
- TCP TRAFFICABLE CONCRETE PAVEMENT TO CIVIL ENG'S DETAIL
 - CP CONCRETE PEDESTRIAN PAVEMENT TO CIVIL ENG'S DETAIL
 - ROADWAY PAVEMENT TO CIVIL ENG'S DETAIL
 - CRB COMPACTED ROAD BASE TO CIVIL ENG'S DETAIL
 - LANDSCAPED AREA
 - AR ARMCO SAFETY FENCE



0 2500 5000 7500 10000 12500mm
SCALE 1:250 AT ORIGINAL SIZE

COPYRIGHT PROTECTS THIS PUBLICATION. EXCEPT FOR PURPOSES PERMITTED BY THE COPYRIGHT ACT, REPRODUCTION BY WHATEVER MEANS IS PROHIBITED WITHOUT THE PRIOR WRITTEN PERMISSION OF Aurizon Operations Ltd.	ALTERATIONS				 GHD Tower, Level 3 24 Honeysuckle Drive, Newcastle NSW 2300 Australia PO Box 5403 Hunter Rgn Mail Cent. NSW 2310 T 61 2 4979 9999 F 61 2 4979 9988 E ntlmail@ghd.com W www.ghd.com PROJECT No. 2216395 DRAWING No.	DESIGNED C. ACEVSKI		REVIEWED FOR AURIZON REQUIREMENTS		 AURIZON	Aurizon Operations Ltd - ACN 124 649 967				FILE No.	DRAWING NUMBER	ISSUE				
	1	FOR 90% PROJECT REVIEW				CA+	01.02.13	DESIGN CHECKED	DRAWN		DRAFTING CHECK	APPROVED	DESIGN MANAGER	DATE				ISSUE AUTHORISED	DATE	DATE	DATE
	2	90% DESIGN REVIEW FOR TRACK LOWERED OPTION-GENERAL REVISION				CA+	15.03.13														
SCALES SHOWN ARE FOR AN A1 SIZE ORIGINAL DRAWINGS																					

KEYNOTE ABBREVIATIONS LEGEND	
Key Value	Keynote Text
B	PROVIDE BOLLARD TO STRUC ENG'S DETAIL
BC	PROVIDE BARGE CAPPING COLORBOND FINISH
DP1	PROVIDE PVC DOWNPIPE TO HYD ENG'S DETAIL, 2000 STEEL SLEEVE GALV FINISH
EG	PROVIDE METAL EAVES GUTTER COLORBOND FINISH
HC	PROVIDE HOSECOCK TO HYD ENG'S DETAIL
L	PROVIDE LIGHTING TO ELEC ENG'S DETAIL
LP	PROVIDE PROPRIETARY LADDER CONNECTION POINT SYSTEM
MRS	PROVIDE METAL ROOF SHEETING COLORBOND FINISH
RC	PROVIDE RIDGE CAPPING COLORBOND FINISH
VMC	PROVIDE VERTICAL METAL CLADDING COLORBOND FINISH
WB	PROVIDE WHIRLY BIRD COLORBOND FINISH

C ELEVATION
6815 SCALE 1:100

D ELEVATION
6815 SCALE 1:100

E ELEVATION
6815 SCALE 1:100

F ELEVATION
6815 SCALE 1:100

0 1000 2000 3000 4000 5000mm
SCALE 1:100 AT ORIGINAL SIZE

COPYRIGHT PROTECTS THIS PUBLICATION. EXCEPT FOR PURPOSES PERMITTED BY THE COPYRIGHT ACT, REPRODUCTION BY WHATEVER MEANS IS PROHIBITED WITHOUT THE PRIOR WRITTEN PERMISSION OF Aurizon Operations Ltd.

ALTERATIONS	
1	FOR 90% PROJECT REVIEW
2	90% DESIGN REVIEW FOR TRACK LOWERED OPTION-GENERAL REVISION

GHD Tower, Level 3
24 Honey suckle Drive, Newcastle NSW 2300 Australia
PO Box 5403 Hunter Rgn Mail Cent. NSW 2310
T 61 2 4979 9999 F 61 2 4979 9988
E ntmall@ghd.com W www.ghd.com

DESIGNED		REVIEWED FOR AURIZON REQUIREMENTS	
DESIGN CHECKED	C. ACEVSKI	DESIGN MANAGER	DATE
DRAWN	M. LEWIS	ISSUE AUTHORISED	DATE
DRAFTING CHECK			
APPROVED			
	DATE		DATE

Aurizon Operations Ltd - ACN 124 649 967

HEXHAM TO TARRO
176.00 km MAIN NORTH LINE
SERVICE VEHICLE GARAGE - ARCHITECTURE
ELEVATIONS

FILE No.	
DRAWING NUMBER	ISSUE
QRN-E-0044-6830	2

BOTANICAL NAME	COMMON NAME	MINIMUM APPLICATION RATE kg/ha
TREATMENT 1 - HYDROMULCH MIX 1 - GRASS SEED TO BATTERS		
Approx. Area (m2): TBC IFC ISSUE		
Grass Seed Species		
CYNBOPOGON refractus	Barbed-wire Grass	5
CYNODON dactylon	Green Couch	5
HETEROPOGON contortus	Black Speargrass	5
BOTHRIOCHLOA macra	Redgrass	5
IMPERATA cylindrica	Blady Grass	5
POA sieberiana	Small Blue Tussock Grass	5
THEMEDA triandra	Kangaroo Grass	5
Cover Crop Species - Cool Season (April - September)		
LOLUM rigidum	Wimmera Rye	5
Cover Crop Species - Warm Season (October - March)		
ECHINOCHLOA funiculacea	Japanese Millet	5
NOTES		
Apply the off-season mix (the passing season's mix) when seeding at the end of a season		

BOTANICAL NAME	COMMON NAME	MINIMUM APPLICATION RATE kg/ha
TREATMENT 2 - HYDROMULCH MIX 2 - GRASS SEED TO CHANNELS		
Approx. Area (m2): TBC IFC ISSUE		
Grass Seed Species		
CYNODON dactylon	Green Couch	10
BOTHRIOCHLOA macra	Redgrass	10
PASPALLUM distichum	Salt Water Couch	10
THEMEDA triandra	Kangaroo Grass	5
Cover Crop Species - Cool Season (April - September)		
LOLUM rigidum	Wimmera Rye	5
Cover Crop Species - Warm Season (October - March)		
ECHINOCHLOA funiculacea	Japanese Millet	5
NOTES		
Apply the off-season mix (the passing season's mix) when seeding at the end of a season		

LANDSCAPE TREATMENTS APPLICATION REQUIREMENTS

	TREATMENT 1 - NATIVE GRASS SEEDING (HYDROMULCH)
	- MECHANICAL HERBICIDE APPLICATION - KNOCK DOWN
	- AMELIORATION OF IN-SITU MATERIAL (SPREADING OF AMELIORANT) AS PER NOTES ON DRAWING QRN-E-0044-9201 AND IN ACCORDANCE WITH LANDSCAPE SPECIFICATION
	- GROUND PREPARATION AS PER TYPICAL DETAILS ON DRAWINGS QRN-E-0044-9270 TO 9271 AND IN ACCORDANCE WITH LANDSCAPE SPECIFICATIONS
	- SUPPLY AND PLACEMENT OF COMPLIANT TOPSOIL, DEPTHS IN ACCORDANCE WITH SPECIFICATION AND NOTES ON DRAWING QRN-E-0044-9201
	- HYDROMULCHING OF MIX 1 AS PER TABLE 4 IN DRAWING QRN-E-0044-9201
	- REFER TO THIS DRAWING FOR SEED SCHEDULE AND APPLICATION RATES
	TREATMENT 2 - NATIVE GRASS SEEDING TO CHANNELS /DRAINS (HYDROMULCH)
	- MECHANICAL HERBICIDE APPLICATION - KNOCK DOWN
	- AMELIORATION OF IN-SITU MATERIAL (SPREADING OF AMELIORANT) AS PER NOTES ON DRAWING QRN-E-0044-9201 AND IN ACCORDANCE WITH LANDSCAPE SPECIFICATION
	- GROUND PREPARATION AS PER TYPICAL DETAILS ON DRAWINGS QRN-E-0044-9270 TO 9271 AND IN ACCORDANCE WITH LANDSCAPE SPECIFICATIONS
	- SUPPLY AND PLACEMENT OF COMPLIANT TOPSOIL, DEPTHS IN ACCORDANCE WITH SPECIFICATION AND NOTES ON DRAWING QRN-E-0044-9201
	- HYDROMULCHING OF MIX 2 AS PER TABLE 4 IN DRAWING QRN-E-0044-9201
	- REFER TO THIS DRAWING FOR SEED SCHEDULE AND APPLICATION RATES

QTY	CODE	BOTANICAL NAME	COMMON NAME	MATURE PLANT SIZE (H x W) (m)	CONTAINER SIZE	WATER DEPTH
TREATMENT 3 - DETENTION BASIN PLANTING						
Approx. Area (m2): TBC IFC ISSUE						
Batter planting - above inundation (density 3/m²)						
567	CAR app	CAREX appressa	Tall Sedge	0.8 x 0.6	tube	above max. water
567	FIG nod	FIGONIA nodosa	Knobby Club-rush	1 x 0.5	tube	above max. water
567	GAH asp	GAHNIA aspera	Saw Sedge	0.6 x 0.5	tube	above max. water
567	GAH sie	GAHNIA sieberiana	Sword sedge	2 x 0.5	tube	above max. water
567	JUN kra	JUNCUS kraussii	Sea rush	1.2 x 1.5	tube	above max. water
567	LOM lon	LOMANDRA longifolia	Mat Rush	1 x 1	tube	above max. water
567	LOM fil	LOMANDRA filiformis	Mat Rush	1 x 1	tube	above max. water
567	POA lab	POA labillardieri	Poa Tussock	1.2 x 1	tube	above max. water
Ephemeral marsh zone - temporary inundation (density 5/m²)						
7934	BOL cad	BOLBOSCHOENUS cadwellii	Sea Club-rush	1 x 0.3	tube	0mm - 300mm
7934	LOM lon	LOMANDRA longifolia	Mat Rush	1 x 1	tube	0mm - 300mm
7934	FIG nod	FIGONIA nodosa	Knobby Club Rush	1 x 0.5	tube	0mm - 300mm
7934	JUN usi	JUNCUS ustulatus	Common Rush	1 x 0.5	tube	0mm - 300mm
7934	PHR aus	PHRAGMITES australis	Common Reed	2.4 x 0.9	tube	0mm - 300mm
7934	POA lab	POA labillardieri	Poa Tussock	1.2 x 1	tube	0mm - 300mm
7934	SCH muc	SCHOENOPLECTUS mucronatus	Scirpus Club-rush	1 x 0.5	tube	0mm - 300mm

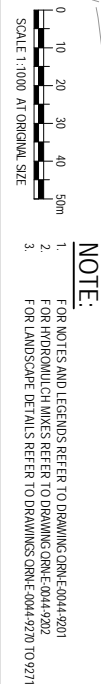
QTY	CODE	BOTANICAL NAME	COMMON NAME	MATURE PLANT SIZE (H x W) (m)	SPACING	CONTAINER SIZE
TREATMENT 4 - PLANTING TO BUILDINGS/FACILITIES						
Approx. Area (m2): TBC IFC ISSUE						
Trees						
13	MEL qui *	MELALEUCA quinquevenia	Swamp Paperbark	12 x 7	AS SHOWN	45 Lt
4	MEL sai *	MELALEUCA salicina (syn CALLISTEMON salignus)	Willow bottlebrush	8 x 4	AS SHOWN	45 Lt
Shrubs						
9	LEP bra	LEPTOSPERMUM brachyandrum	Tea Tree	5 x 4	AS SHOWN	140mm
Groundcovers						
314	LOM lon	LOMANDRA longifolia	Mat Rush	1 x 1	750mm	140mm
367	LOM fil	LOMANDRA filiformis	Mat Rush	1 x 1	750mm	140mm
777	POA ESK	POA labillardieri 'Eskdale'	Tussock Grass	0.7 x 0.5	500mm	140mm
269	POA KIN	POA poliformis 'Kingsdale'	Blue Tussock Grass	0.5 x 0.5	500mm	140mm
130	THE MIN	THEMEDA australis 'Mingo'	Mingo	0.3 x 0.5	500mm	140mm
TURF						
	ZOV EMP	ZOYSIA 'Empire'	Empire	N/A	N/A	N/A

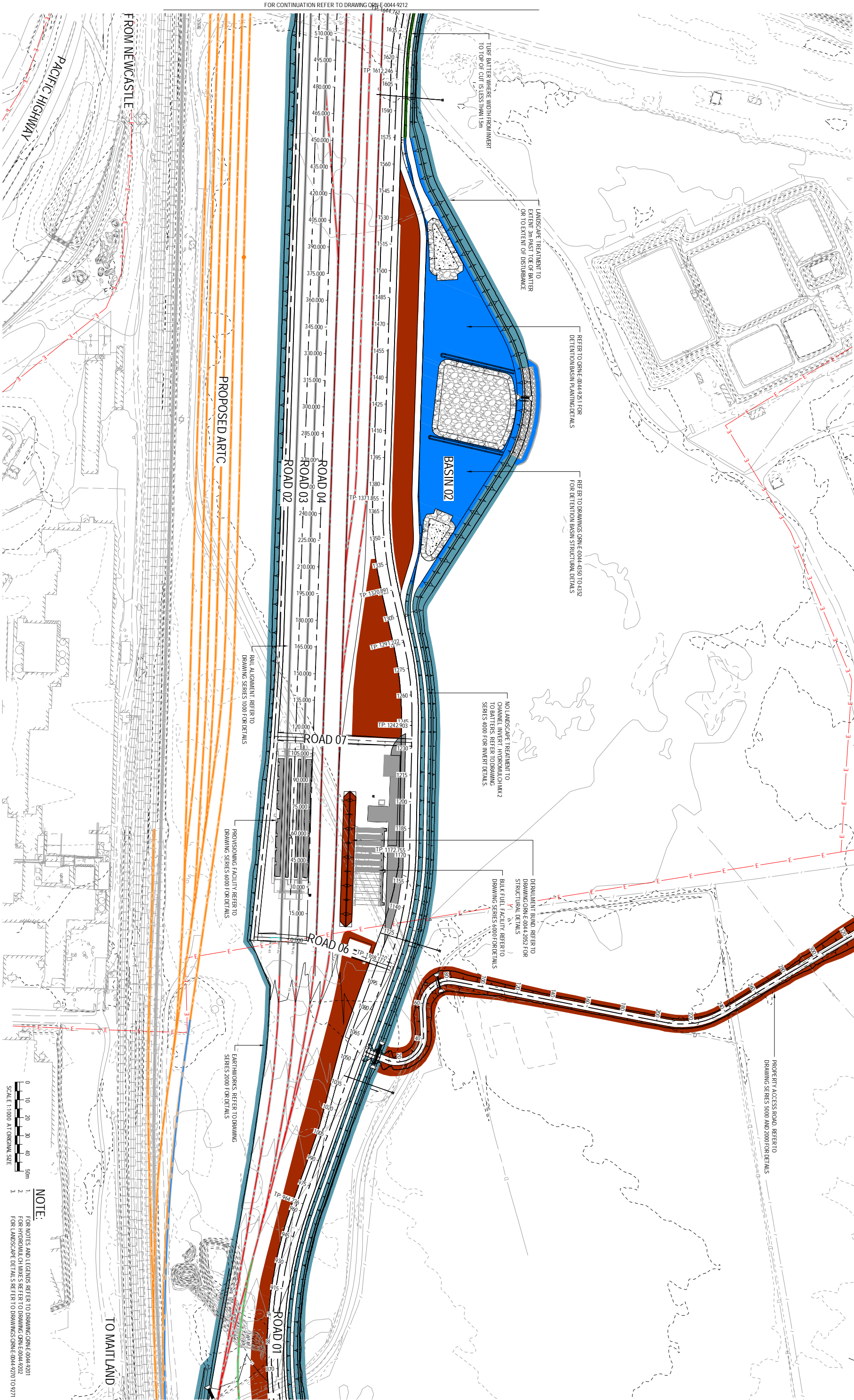
(*) - STAKE TREE SPECIMENS AS SPECIFIED AND AS SHOWN ON DRAWING QRN-E-0044-9271

LANDSCAPE TREATMENTS (Cont)

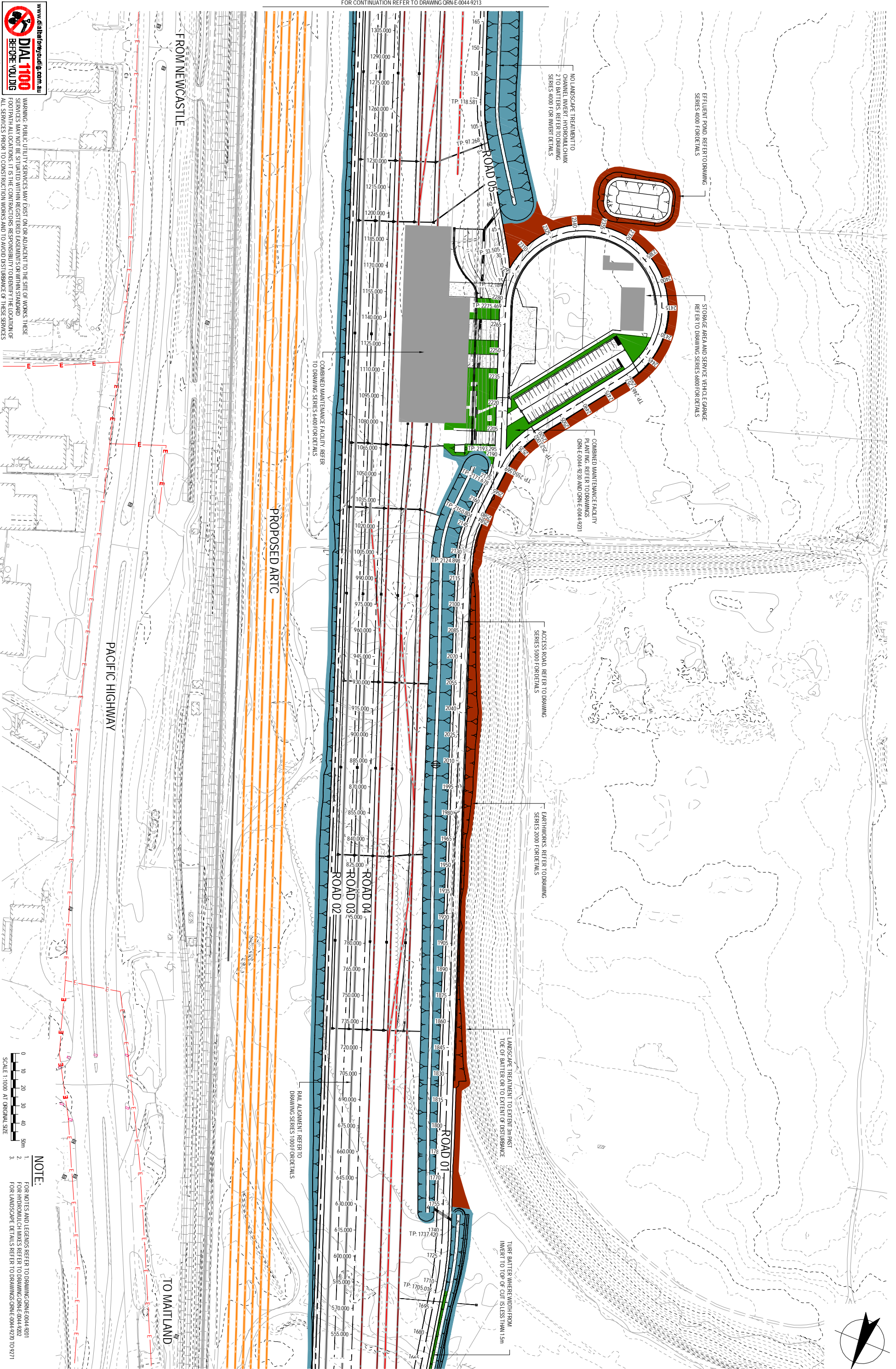
	TREATMENT 3 - DETENTION BASIN PLANTING (E PHEMERAL PLANTING) (CONTAINER STOCK)
	- MECHANICAL HERBICIDE APPLICATION - KNOCK DOWN
	- AMELIORATION OF IN-SITU MATERIAL (SPREADING OF AMELIORANT) AS PER NOTES ON DRAWING QRN-E-0044-9201 AND IN ACCORDANCE WITH LANDSCAPE SPECIFICATION
	- GROUND PREPARATION AS PER TYPICAL DETAILS ON DRAWINGS QRN-E-0044-9270 TO 9271 AND IN ACCORDANCE WITH LANDSCAPE SPECIFICATIONS
	- SUPPLY AND PLACEMENT OF COMPLIANT TOPSOIL, DEPTHS IN ACCORDANCE WITH SPECIFICATION
	- INSTALL MACCAEERRI MACUTE LIGHT JUTEIMAT OR SIMILAR APPROVED AS PER MANUFACTURERS SPECIFICATIONS, TO BATTERS
	- PLANTING OF CONTAINER STOCK. REFER TO THIS DRAWING FOR PLANT SPECIES AND SCHEDULE
	TREATMENT 4 - FACILITIES BUILDING PLANTING (CONTAINER STOCK)
	- MECHANICAL HERBICIDE APPLICATION - KNOCK DOWN
	- AMELIORATION OF IN-SITU MATERIAL (SPREADING OF AMELIORANT) AS PER NOTES ON DRAWING QRN-E-0044-9201 AND IN ACCORDANCE WITH LANDSCAPE SPECIFICATION
	- GROUND PREPARATION AS PER TYPICAL DETAILS ON DRAWINGS QRN-E-0044-9270 TO 9271 AND IN ACCORDANCE WITH LANDSCAPE SPECIFICATIONS
	- SUPPLY AND PLACEMENT OF COMPLIANT TOPSOIL, DEPTHS IN ACCORDANCE WITH SPECIFICATION
	- PLANTING OF CONTAINER STOCK REFER TO THIS DRAWING FOR PLANT SPECIES AND SCHEDULE
	TREATMENT 5 - TURF
	- MECHANICAL HERBICIDE APPLICATION - KNOCK DOWN
	- AMELIORATION OF IN-SITU MATERIAL (SPREADING OF AMELIORANT) AS PER NOTES ON DRAWING QRN-E-0044-9201 AND IN ACCORDANCE WITH LANDSCAPE SPECIFICATION
	- GROUND PREPARATION AS PER TYPICAL DETAILS ON DRAWINGS QRN-E-0044-9270 TO 9271 AND IN ACCORDANCE WITH LANDSCAPE SPECIFICATIONS
	- SUPPLY AND PLACEMENT OF COMPLIANT TOPSOIL, DEPTHS IN ACCORDANCE WITH SPECIFICATION
	- TURF - ZOYSA 'EMPIRE'

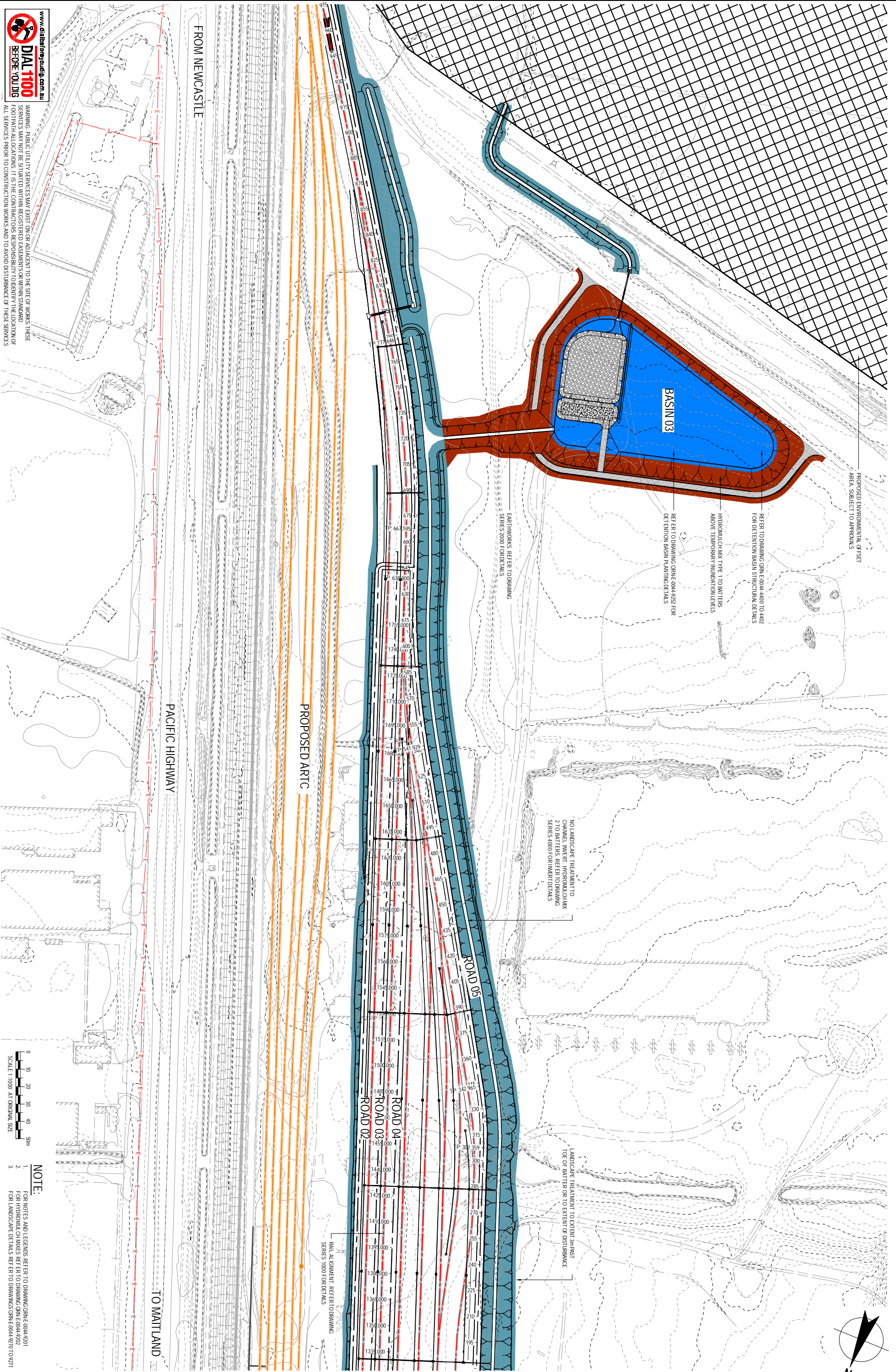
COPYRIGHT PROTECTS THIS PUBLICATION. EXCEPT FOR PURPOSES PERMITTED BY THE COPYRIGHT ACT, REPRODUCTION BY WHATEVER MEANS IS PROHIBITED WITHOUT THE PRIOR WRITTEN PERMISSION OF Aurizon Operations Ltd.	ALTERATIONS		DESIGNED	E. HERNANDEZ	REVIEWED FOR AURIZON REQUIREMENTS	Aurizon Operations Ltd - ACN 124 649 967	HEXHAM TO TARRO TERM TRAIN SUPPORT FACILITY	FILE No. QRN-E-0044-9202.dwg	DRAWING NUMBER	ISSUE
	1 FOR 90% PROJECT REVIEW									
SCALES SHOWN ARE FOR AN A1 SIZE ORIGINAL DRAWING	2 90% DESIGN REVIEW FOR TRACK LOWERED OPTION	1/20/13	TEH							
			GHD		PROJECT No. 22-16395					
			DRAWING No.							

[illegible]



COPYRIGHT PROTECTS THIS PUBLICATION. EXCEPT FOR PURPOSES PERMITTED BY THE COPYRIGHT ACT, REPRODUCTION BY WHATEVER MEANS IS PROHIBITED WITHOUT THE PRIOR WRITTEN PERMISSION OF Aurizon Operations Ltd.		1 FOR 90% PROJECT REVIEW		ALTERATIONS		1/20/21 YEH		GHD		DESIGNED E. HERNANDEZ		REQUIRED FOR AURIZON		Aurizon Operations Ltd - ACN 124 649 967		HEXHAM TO TARRO		FILE No. QRN-E-0044-9211.dwg	
2 90% DESIGN REVIEW FOR TRACK LOWERED OPTION						1/20/21 YEH		2015/2016/2017/2018/2019/2020/2021/2022/2023/2024/2025/2026/2027/2028/2029/2030/2031/2032/2033/2034/2035/2036/2037/2038/2039/2040/2041/2042/2043/2044/2045/2046/2047/2048/2049/2050/2051/2052/2053/2054/2055/2056/2057/2058/2059/2060/2061/2062/2063/2064/2065/2066/2067/2068/2069/2070/2071/2072/2073/2074/2075/2076/2077/2078/2079/2080/2081/2082/2083/2084/2085/2086/2087/2088/2089/2090/2091/2092/2093/2094/2095/2096/2097/2098/2099/2100/2101/2102/2103/2104/2105/2106/2107/2108/2109/2110/2111/2112/2113/2114/2115/2116/2117/2118/2119/2120/2121/2122/2123/2124/2125/2126/2127/2128/2129/2130/2131/2132/2133/2134/2135/2136/2137/2138/2139/2140/2141/2142/2143/2144/2145/2146/2147/2148/2149/2150/2151/2152/2153/2154/2155/2156/2157/2158/2159/2160/2161/2162/2163/2164/2165/2166/2167/2168/2169/2170/2171/2172/2173/2174/2175/2176/2177/2178/2179/2180/2181/2182/2183/2184/2185/2186/2187/2188/2189/2190/2191/2192/2193/2194/2195/2196/2197/2198/2199/2200/2201/2202/2203/2204/2205/2206/2207/2208/2209/2210/2211/2212/2213/2214/2215/2216/2217/2218/2219/2220/2221/2222/2223/2224/2225/2226/2227/2228/2229/2230/2231/2232/2233/2234/2235/2236/2237/2238/2239/2240/2241/2242/2243/2244/2245/2246/2247/2248/2249/2250/2251/2252/2253/2254/2255/2256/2257/2258/2259/2260/2261/2262/2263/2264/2265/2266/2267/2268/2269/2270/2271/2272/2273/2274/2275/2276/2277/2278/2279/2280/2281/2282/2283/2284/2285/2286/2287/2288/2289/2290/2291/2292/2293/2294/2295/2296/2297/2298/2299/2300/2301/2302/2303/2304/2305/2306/2307/2308/2309/2310/2311/2312/2313/2314/2315/2316/2317/2318/2319/2320/2321/2322/2323/2324/2325/2326/2327/2328/2329/2330/2331/2332/2333/2334/2335/2336/2337/2338/2339/2340/2341/2342/2343/2344/2345/2346/2347/2348/2349/2350/2351/2352/2353/2354/2355/2356/2357/2358/2359/2360/2361/2362/2363/2364/2365/2366/2367/2368/2369/2370/2371/2372/2373/2374/2375/2376/2377/2378/2379/2380/2381/2382/2383/2384/2385/2386/2387/2388/2389/2390/2391/2392/2393/2394/2395/2396/2397/2398/2399/2400/2401/2402/2403/2404/2405/2406/2407/2408/2409/2410/2411/2412/2413/2414/2415/2416/2417/2418/2419/2420/2421/2422/2423/2424/2425/2426/2427/2428/2429/2430/2431/2432/2433/2434/2435/2436/2437/2438/2439/2440/2441/2442/2443/2444/2445/2446/2447/2448/2449/2450/2451/2452/2453/2454/2455/2456/2457/2458/2459/2460/2461/2462/2463/2464/2465/2466/2467/2468/2469/2470/2471/2472/2473/2474/2475/2476/2477/2478/2479/2480/2481/2482/2483/2484/2485/2486/2487/2488/2489/2490/2491/2492/2493/2494/2495/2496/2497/2498/2499/2500/2501/2502/2503/2504/2505/2506/2507/2508/2509/2510/2511/2512/2513/2514/2515/2516/2517/2518/2519/2520/2521/2522/2523/2524/2525/2526/2527/2528/2529/2530/2531/2532/2533/2534/2535/2536/2537/2538/2539/2540/2541/2542/2543/2544/2545/2546/2547/2548/2549/2550/2551/2552/2553/2554/2555/2556/2557/2558/2559/2560/2561/2562/2563/2564/2565/2566/2567/2568/2569/2570/2571/2572/2573/2574/2575/2576/2577/2578/2579/2580/2581/2582/2583/2584/2585/2586/2587/2588/2589/2590/2591/2592/2593/2594/2595/2596/2597/2598/2599/2600/2601/2602/2603/2604/2605/2606/2607/2608/2609/2610/2611/2612/2613/2614/2615/2616/2617/2618/2619/2620/2621/2622/2623/2624/2625/2626/2627/2628/2629/2630/2631/2632/2633/2634/2635/2636/2637/2638/2639/2640/2641/2642/2643/2644/2645/2646/2647/2648/2649/2650/2651/2652/2653/2654/2655/2656/2657/2658/2659/2660/2661/2662/2663/2664/2665/2666/2667/2668/2669/2670/2671/2672/2673/2674/2675/2676/2677/2678/2679/2680/2681/2682/2683/2684/2685/2686/2687/2688/2689/2690/2691/2692/2693/2694/2695/2696/2697/2698/2699/2700/2701/2702/2703/2704/2705/2706/2707/2708/2709/2710/2711/2712/2713/2714/2715/2716/2717/2718/2719/2720/2721/2722/2723/2724/2725/2726/2727/2728/2729/2730/2731/2732/2733/2734/2735/2736/2737/2738/2739/2740/2741/2742/2743/2744/2745/2746/2747/2748/2749/2750/2751/2752/2753/2754/2755/2756/2757/2758/2759/2760/2761/2762/2763/2764/2765/2766/2767/2768/2769/2770/2771/2772/2773/2774/2775/2776/2777/2778/2779/2780/2781/2782/2783/2784/2785/2786/2787/2788/2789/2790/2791/2792/2793/2794/2795/2796/2797/2798/2799/2800/2801/2802/2803/2804/2805/2806/2807/2808/2809/2810/2811/2812/2813/2814/2815/2816/2817/2818/2819/2820/2821/2822/2823/2824/2825/2826/2827/2828/2829/2830/2831/2832/2833/2834/2835/2836/2837/2838/2839/2840/2841/2842/2843/2844/2845/2846/2847/2848/2849/2850/2851/2852/2853/2854/2855/2856/2857/2858/2859/2860/2861/2862/2863/2864/2865/2866/2867/2868/2869/2870/2871/2872/2873/2874/2875/2876/2877/2878/2879/2880/2881/2882/2883/2884/2885/2886/2887/2888/2889/2890/2891/2892/2893/2894/2895/2896/2897/2898/2899/2900/2901/2902/2903/2904/2905/2906/2907/2908/2909/2910/2911/2912/2913/2914/2915/2916/2917/2918/2919/2920/2921/2922/2923/2924/2925/2926/2927/2928/2929/2930/2931/2932/2933/2934/2935/2936/2937/2938/2939/2940/2941/2942/2943/2944/2945/2946/2947/2948/2949/2950/2951/2952/2953/2954/2955/2956/2957/2958/2959/2960/2961/2962/2963/2964/2965/2966/2967/2968/2969/2970/2971/2972/2973/2974/2975/2976/2977/2978/2979/2980/2981/2982/2983/2984/2985/2986/2987/2988/2989/2990/2991/2992/2993/2994/2995/2996/2997/2998/2999/3000/3001/3002/3003/3004/3005/3006/3007/3008/3009/3010/3011/3012/3013/3014/3015/3016/3017/3018/3019/3020/3021/3022/3023/3024/3025/3026/3027/3028/3029/3030/3031/3032/3033/3034/3035/3036/3037/3038/3039/3040/3041/3042/3043/3044/3045/3046/3047/3048/3049/3050/3051/3052/3053/3054/3055/3056/3057/3058/3059/3060/3061/3062/3063/3064/3065/3066/3067/3068/3069/3070/3071/3072/3073/3074/3075/3076/3077/3078/3079/3080/3081/3082/3083/3084/3085/3086/3087/3088/3089/3090/3091/3092/3093/3094/3095/3096/3097/3098/3099/3100/3101/3102/3103/3104/3105/3106/3107/3108/3109/3110/3111/3112/3113/3114/3115/3116/3117/3118/3119/3120/3121/3122/3123/3124/3125/3126/3127/3128/3129/3130/3131/3132/3133/3134/3135/3136/3137/3138/3139/3140/3141/3142/3143/3144/3145/3146/3147/3148/3149/3150/3151/3152/3153/3154/3155/3156/3157/3158/3159/3160/3161/3162/3163/3164/3165/3166/3167/3168/3169/3170/3171/3172/3173/3174/3175/3176/3177/3178/3179/3180/3181/3182/3183/3184/3185/3186/3187/3188/3189/3190/3191/3192/3193/3194/3195/3196/3197/3198/3199/3200/3201/3202/3203/3204/3205/3206/3207/3208/3209/3210/3211/3212/3213/3214/3215/3216/3217/3218/3219/3220/3221/3222/3223/3224/3225/3226/3227/3228/3229/3230/3231/3232/3233/3234/3235/3236/3237/3238/3239/3240/3241/3242/3243/3244/3245/3246/3247/3248/3249/3250/3251/3252/3253/3254/3255/3256/3257/3258/3259/3260/3261/3262/3263/3264/3265/3266/3267/3268/3269/3270/3271/3272/3273/3274/3275/3276/3277/3278/3279/3280/3281/3282/3283/3284/3285/3286/3287/3288/3289/3290/3291/3292/3293/3294/3295/3296/3297/3298/3299/3300/3301/3302/3303/3304/3305/3306/3307/3308/3309/3310/3311/3312/3313/3314/3315/3316/3317/3318/3319/3320/3321/3322/3323/3324/3325/3326/3327/3328/3329/3330/3331/3332/3333/3334/3335/3336/3337/3338/3339/3340/3341/3342/3343/3344/3345/3346/3347/3348/3349/3350/3351/3352/3353/3354/3355/3356/3357/3358/3359/3360/3361/3362/3363/3364/3365/3366/3367/3368/3369/3370/3371/3372/3373/3374/3375/3376/3377/3378/3379/3380/3381/3382/3383/3384/3385/3386/3387/3388/3389/3390/3391/3392/3393/3394/3395/3396/3397/3398/3399/3400/3401/3402/3403/3404/3405/3406/3407/3408/3409/3410/3411/3412/3413/3414/3415/3416/3417/3418/3419/3420/3421/3422/3423/3424/3425/3426/3427/3428/3429/3430/3431/3432/3433/3434/3435/3436/3437/3438/3439/3440/3441/3442/3443/3444/3445/3446/3447/3448/3449/3450/3451/3452/3453/3454/3455/3456/3457/3458/3459/3460/3461/3462/3463/3464/3465/3466/3467/3468/3469/3470/3471/3472/3473/3474/3475/3476/3477/3478/3479/3480/3481/3482/3483/3484/3485/3486/3487/3488/3489/3490/3491/3492/3493/3494/3495/3496/3497/3498/3499/3500/3501/3502/3503/3504/3505/3506/3507/3508/3509/3510/3511/3512/3513/3514/3515/3516/3517/3518/3519/3520/3521/3522/3523/3524/3525/3526/3527/3528/3529/3530/3531/3532/3533/3534/3535/3536/3537/3538/3539/3540/3541/3542/3543/3544/3545/3546/3547/3548/3549/3550/3551/3552/3553/3554/3555/3556/3557/3558/3559/3560/3561/3562/3563/3564/3565/3566/3567/3568/3569/3570/3571/3572/3573/3574/3575/3576/3577/3578/3579/3580/3581/3582/3583/3584/3585/3586/3587/3588/3589/3590/3591/3592/3593/3594/3595/3596/3597/3598/3599/3600/3601/3602/3603/3604/3605/3606/3607/3608/3609/3610/3611/3612/3613/3614/3615/3616/3617/3618/3619/3620/3621/3622/3623/3624/3625/3626/3627/3628/3629/3630/3631/3632/3633/3634/3635/3636/3637/3638/3639/3640/3641/3642/3643/3644/3645/3646/3647/3648/3649/3650/3651/3652/3653/3654/3655/3656/3657/3658/3659/3660/3661/3662/3663/3664/3665/3666/3667/3668/3669/3670/3671/3672/3673/3674/3675/3676/3677/3678/3679/3680/3681/3682/3683/3684/3685/3686/3687/3688/3689/3690/3691/3692/3693/3694/3695/3696/3697/3698/3699/3700/3701/3702/3703/3704/3705/3706/3707/3708/3709/3710/3711/3712/3713/3714/3715/3716/3717/3718/3719/3720/3721/3722/3723/3724/3725/3726/3727/3728/3729/3730/3731/3732/3733/3734/3735/3736/3737/3738/3739/3740/3741/3742/3743/3744/3745/3746/3747/3748/3749/3750/3751/3752/3753/3754/3755/3756/3757/3758/3759/3760/3761/3762/3763/3764/3765/3766/3767/3768/3769/3770/3771/3772/3773/3774/3775/3776/3777/3778/3779/3780/3781/3782/3783/3784/3785/3786/3787/3788/3789/3790/3791/3792/3793/3794/3795/3796/3797/3798/3799/3800/3801/3802/3803/3804/3805/3806/3807/3808/3809/3810/3811/3812/3813/3814/3815/3816/3817/3818/3819/3820/3821/3822/3823/3824/3825/3826/3827/3828/3829/3830/3831/3832/3833/3834/3835/3836/3837/3838/3839/3840/3841/3842/3843/3844/3845/3846/3847/3848/3849/3850/3851/3852/3853/3854/3855/3856/3857/3858/3859/3860/3861/3862/3863/3864/3865/3866/3867/3868/3869/3870/3871/3872/3873/3874/3875/3876/3877/3878/3879/3880/3881/3882/3883/3884/3885/3886/3887/3888/3889/3890/3891/3892/3893/3894/3895/3896/3897/3898/3899/3900/3901/3902/3903/3904/3905/3906/3907/3908/3909/3910/3911/3912/3913/3914/3915/3916/3917/3918/3919/3920/3921/3922/3923/3924/3925/3926/3927/3928/3929/3930/3931/3932/3933/3934/3935/3936/3937/3938/3939/3940/3941/3942/3943/3944/3945/3946/3947/3948/3949/3950/3951/3952/3953/3954/3955/3956/3957/3958/3959/3960/3961/3962/3963/3964/3965/3966/3967/3968/3969/3970/3971/3972/3973/3974/3975/3976/3977/3978/3979/3980/3981/3982/3983/3984/3985/3986/3987/3988/3989/3990/3991/3992/3993/3994/3995/3996/3997/3998/3999/4000/4001/4002/4003/4004/4005/4006/4007/4008/4009/4010/4011/4012/4013/4014/4015/4016/4017/4018/4019/4020/4021/4022/4023/4024/4025/4026/4027/4028/4029/4030/4031/4032/4033/4034/4035/4036/4037/4038/4039/4040/4041/4042/4043/4044/4045/4046/4047/4048/4049/4050/4051/4052/4053/4054/4055/4056/4057/4058/4059/4060/4061/4062/4063/4064/4065/4066/4067/4068/4069/4070/4071/4072/4073/4074/4075/4076/4077/4078/4079/4080/4081/4082/4083/4084/4085/4086/4087/4088/4089/4090/4091/4092/4093/4094/4095/4096/4097/4098/4099/4100/4101/4102/4103/4104/4105/4106/4107/4108/4109/4110/4111/4112/4113/4114/4115/4116/4117/4118/4119/4120/4121/4122/4123/4124/4125/4126/4127/4128/4129/4130/4131/4132/4133/4134/4135/4136/4137/4138/4139/4140/4141/4142/4143/4144/4145/4146/4147/4148/4149/4150/4151/4152/4153/4154/4155/4156/4157/4158/4159/4160/4161/4162/4163/4164/4165/4166/4167/4168/4169/4170/4171/4172/4173/4174/4175/4176/4177/4178/4179/4180/4181/4182/4183/4184/4185/4186/4187/4188/4189/4190/4191/4192/4193/4194/4195/4196/4197/4198/4199/4200/4201/4202/4203/4204/4205/4206/4207/4208/4209/4210/4211/4212/4213/4214/4215/4216/4217/4218/4219/4220/4221/4222/4223/4224/4225/4226/4227/4228/4229/4230/4231/4232/4233/4234/4235/4236/4237/4238/4239/4240/4241/4242/4243/4244/4245/4246/4247/4248/4249/4250/4251/4252/4253/4254/4255/4256/4257/4258/4259/4260/4261/4262/4263/4264/4265/4266/4267/4268/4269/4270/4271/4272/4273/4274/4275/4276/4277/4278/4279/4280/4281/4282/4283/4284/4285/4286/4287/4288/4289/4290/4291/4292/4293/4294/4295/4296/4297/4298/4299/4300/4301/4302/4303/4304/4305/4306/4307/4308/4309/4310/4311/4312/4313/4314/4315/4316/4317/4318/4319/4320/4321/4322/4323/4324/4325/4326/4327/4328/4329/4330/4331/4332/4333/4334/4335/4336/4337/4338/4339/4340/4341/4342/4343/4344/4345/4346/4347/4348/4349/4350/4351/4352/4353/4354/4355/4356/4357/4358/4359/4360/4361/4362/4363/4364/4365/4366/4367/4368/4369/4370/4371/4372/4373/4374/4375/4376/4377/4378/4379/4380/4381/4382/4383/4384/4385/4386/4387/4388/4389/4390/4391/4392/4393/4394/4395/4396/4397/4398/4399/4400/4401/4402/4403/4404/4405/4406/4407/4408/4409/4410/4411/4412/4413/4414/4415/4416/4417/4418/4419/4420/4421/4422/4423/4424/4425/4426/4427/4428/4429/4430/4431/4432/4433/4434/4435/4436/4											

[illegible]



www.dial1100.com.au
DIAL 1100
BEFORE YOU DIG

WARNING: PUBLIC UTILITY SERVICES MAY EXIST ON OR ADJACENT TO THE SITE OF WORKS. THESE SERVICES MAY NOT BE SITUATED WITHIN REGISTERED EASEMENTS OR WITHIN STANDARD FOOTPATH ALLOCATIONS. IT IS THE CONTRACTOR'S RESPONSIBILITY TO DETERMINE THE LOCATION OF ALL SERVICES PRIOR TO CONSTRUCTION WORKS AND TO AVOID DISTURBANCE OF THESE SERVICES.

COPYRIGHT PROTECTS THIS PUBLICATION. EXCEPT FOR PURPOSES PERMITTED BY THE COPYRIGHT ACT, REPRODUCTION BY WHATEVER MEANS IS PROHIBITED WITHOUT THE PRIOR WRITTEN PERMISSION OF Aurizon Operations Ltd.		ALTERATIONS		GHD		DESIGNED		REQUIRED FOR AURIZON		Aurizon Operations Ltd - ACN 124 649 967		HEXHAM TO TARRO		FILE No. QRN-E-0044-9213.dwg	
1 FOR 90% PROJECT REVIEW		2 90% DESIGN REVIEW FOR TRACK LOWERED OPTION		1/20/21 TCH		DESIGN CHECKED		E. HERNANDEZ		NSW LONG TERM TRAIN SUPPORT FACILITY		DRAWING NUMBER		QRN-E-0044-9213	
2				1/20/21 TCH		DRAWING CHECK		C. PERCY		176.000 km MAIN NORTH LINE		ISSUE		2	
SCALES SHOWN ARE FOR AN A1 SIZE ORIGINAL DRAWING				PROJECT No. 22-16395		APPROVED		DATE		GENERAL PLAN - SHEET 4					
				DRAWING No.				DATE							