

**LEGEND**


- Site Boundary
- Approximate Borehole Location (39798.02)
- Approximate Surface Water Sample Location (39798.02)
- Groundwater Monitoring Well
- Approximate Surface Water Sample Location (39798.04)
- Approximate Borehole Location (18944-1999)
- Approximate Borehole Location (ERM-2010)
- Approximate Borehole Location (Current Investigation)
- Wells not sampled as part of the current investigation (ie damaged/outside site)
- Well screened in upper fill
- Well screened in natural soils (ie clay) underlying fill

- Approximate Creek/Drainage Channels and Direction of Flow
- Approximate Location of Stockpiles
- Approximate Area of Treated Effluent Irrigation (39798.02)
- Approximate Photo Location and Orientation
- Contours - 1m Intervals (AHD)
- Approximate Location of Sand Stockpile
- Approximate Location of Excavated Material

- HWC Trunkmain Pipeline Upgrade
- Interpolated Groundwater Contours m AHD
- Approximate Groundwater Flow Direction

Drawing adapted from Concept Plan by Queensland Rail, Ref Sur1884 dated 23.4.08 and Contour Plan by Worley Parsons, Unreferenced, dated 05.08, and NearMap Image dated 25 June 2011

Note: Conours are based on discrete data points and numerical interpretation. The actual surface may vary from contoured surface shown.




**Douglas Partners**  
Geotechnics | Environment | Groundwater

CLIENT: QR National	
OFFICE: Newcastle	DRAWN BY: PLH
SCALE: 1:5000@A1	DATE: 24.02.2012


TITLE: **Groundwater Contour Plan - 17 October 2011**

**Groundwater Assessment**

**Mattland Road & Woodlands Close, Hexham**



PROJECT No: 39798.05
DRAWING No: 2
REVISION: 0



0 50 100 150 200 300 400 500m

1:5000 @ A1



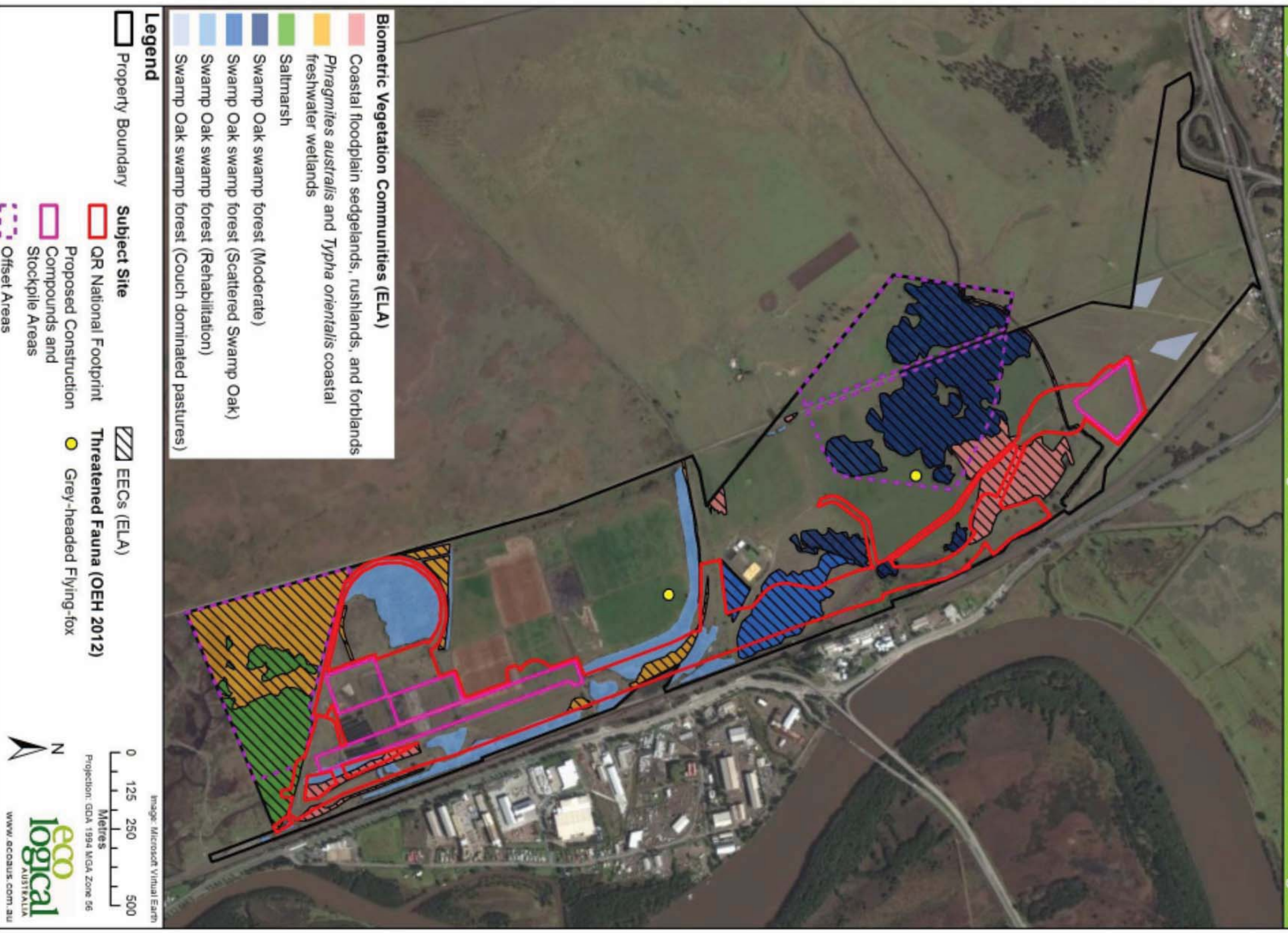


Figure 5: Vegetation communities, Endangered Ecological Communities (EECs) and threatened fauna species encountered during the ELA (2012) surveys.