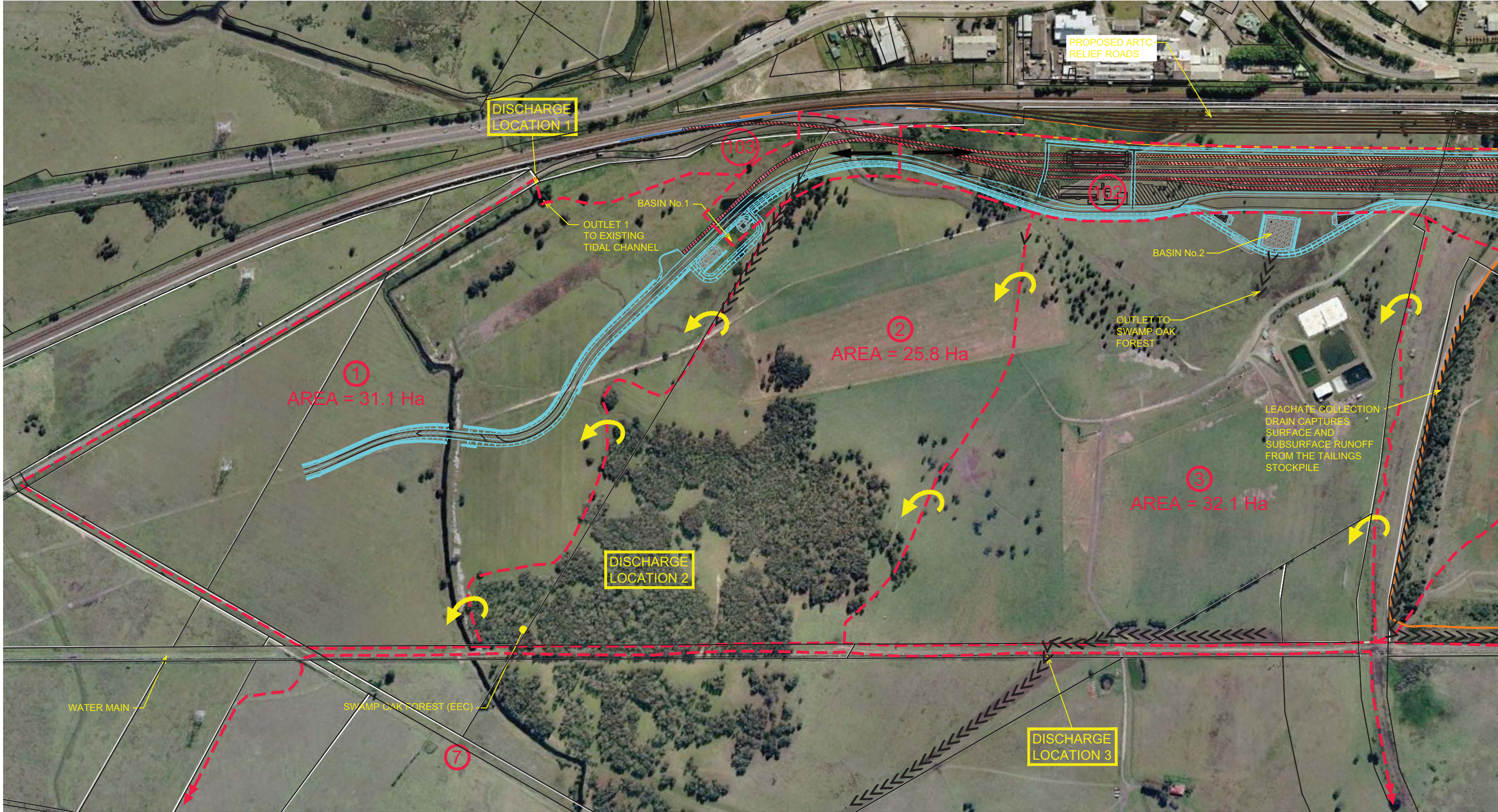


FIGURE 4



0 200m
1: 5000

LEGEND

- CATCHMENT BOUNDARY
- EXISTING SWALE
- SUB-CATCHMENT NUMBER

- PROPOSED OVERLAND FLOW DIRECTION
- OVERFLOW TO ADJACENT CATCHMENT
- SIGNIFICANT DISCHARGE LOCATION
- COAL TAILINGS STOCKPILE EXTENTS

- WATER QUALITY CONTROL POND



WorleyParsons
resources & energy

This figure is licensed by Google Earth for WorleyParsons use only. WorleyParsons is not permitted to grant a licence to use this figure. This figure is not to be copied or distributed without the appropriate licence from Google Earth. Contours & Cadastre (Copyright) Dept Lands, 2009.

FIGURE 4



LEGEND

- CATCHMENT BOUNDARY
- ==== EXISTING SWALE
- ⑦ SUB-CATCHMENT NUMBER

- PROPOSED OVERLAND FLOW DIRECTION
- ↺ OVERFLOW TO ADJACENT CATCHMENT
- DISCHARGE LOCATION 5
- COAL TAILINGS STOCKPILE EXTENTS

- ▬ WATER QUALITY CONTROL POND



This figure is licensed by Google Earth for WorleyParsons use only. WorleyParsons is not permitted to grant a licence to use this figure. This figure is not to be copied or distributed without the appropriate licence from Google Earth. Contours & Cadastre (Copyright) Dept Lands, 2009.

PROPOSED HYDROLOGY
TRAIN SUPPORT FACILITY
SHEET 2 OF 2



Plot File No. G12214870005164.mxd (G:\Users\mabarnier\Documents\12214870005164.mxd) 12/26/2015 3:42:42 PM
Plot Date: Thursday, 26 March 2015 3:42 PM
Plot File: mabarnier

0 50 100 150 200 250 300 m

SCALE: 1:5,000 AT ORIGINAL SIZE

Map Projection: Transverse Mercator
Horizontal Datum: GDA 1994
Grid: GDA 1994 MGA Zone 56

LEGEND

Aurizon NSW LTTSF Rail Centreline

ARTC HRR Rail Centreline

Road 10 Metre

Road 5 Metre

Area Of Disturbance Cut mm

300

800

1000

1500

2600

Aurizon NSW LTTSF Site Boundary

COPYRIGHT PROTECTS THIS PUBLICATION. EXCEPT FOR PURPOSES PERMITTED BY THE COPYRIGHT ACT, REPRODUCTION BY WHATEVER MEANS IS PROHIBITED WITHOUT THE PRIOR WRITTEN PERMISSION OF Aurizon Operations Ltd.

SCALES SHOWN ARE FOR AN A1 SIZE ORIGINAL DRAWING

ALTERATIONS

6	TITLE BLOCK CHANGE	WRB	26.3.13
7	90% DESIGN REVIEW FOR TRACK LOWERED OPTION - GENERAL REVISION	WRB	28.3.13

GHD

GHQ Tower, Level 3
24 Hargreave Drive, Newcastle NSW 2300 Australia
PO Box 5403 Hunter Rgn Mail Cent, NSW 2310
T 61 2 4979 9999 F 61 2 4979 9988
E info@ghd.com W www.ghd.com

PROJECT No. 22-16395

DRAWING No.

DESIGNED W. BIGGS

DESIGN CHECKED

DRAWN M.BARNIER

DRAFTING CHECK

APPROVED

REVIEWED FOR AURIZON REQUIREMENTS

DESIGN MANAGER

ISSUE AUTHORISED

AURIZON.

Aurizon Operations Ltd - ACN 124 649 967

HEXHAM TO TARRO
NSW LONG TERM TRAIN SUPPORT FACILITY
176.000km MAIN NORTH LINE
AREAS OF DISTURBANCE
CUT

FILE No. 2216395-16-FIG-C0002

DRAWING NUMBER 2216395-16-FIG-C0002

ISSUE 7

General

Potential Localised Dewatering May Be Necessary in Some Areas

© 2013. Whilst every care has been taken to prepare this map, GHD, LPM, Nearmap and Engenicom make no representations or warranties about its accuracy, reliability, completeness or suitability for any particular purpose and cannot accept liability and responsibility of any kind (whether in contract, tort or otherwise) for any expenses, losses, damages and/or costs (including indirect or consequential damage) which are or may be incurred by any party as a result of the map being inaccurate, incomplete or unsuitable in any way and for any reason.
Data source: LPM, DCTB - 2007, Nearmap, Aerials - 2012, Engenicom, Design Data - 2012. Created by mabarnier



0 50 100 150 200 250 300 m

SCALE: 1:5,000 AT ORIGINAL SIZE

Map Projection: Transverse Mercator
Horizontal Datum: GDA 1994
Grid: GDA 1994 MGA Zone 56

LEGEND

Aurizon NSW LTTSF Rail Centreline

ARTC HRR Rail Centreline

Road 10 Metre

Road 5 Metre

Area Of Disturbance Fill mm

0-200

200-400

500

1400

Aurizon NSW LTTSF Site Boundary

General

Potential 200mm Site Stripping Prior to Filling of Site

COPYRIGHT PROTECTS THIS PUBLICATION. EXCEPT FOR PURPOSES PERMITTED BY THE COPYRIGHT ACT, REPRODUCTION BY WHATEVER MEANS IS PROHIBITED WITHOUT THE PRIOR WRITTEN PERMISSION OF Aurizon Operations Ltd.	ALTERATIONS			<div><div><div></div><div>GHD</div></div><div><div>GHD Tower, Level 3 24 Honeysuckle Drive, Newcastle NSW 2300 Australia PO Box 5403 Hunter Rgn Mail Cent. NSW 2310 T 61 2 4979 9999 F 61 2 4979 9988 E nrlmail@ghd.com W www.ghd.com</div></div><div><div>PROJECT No. 22-16395</div><div>DRAWING No.</div></div></div>	DESIGNED W. BIGGS	REVIEWED FOR AURIZON REQUIREMENTS	<div><div><div></div><div>AURIZON.</div></div><div>Aurizon Operations Ltd - ACN 124 649 967</div></div>	HEXHAM TO TARRO NSW LONG TERM TRAIN SUPPORT FACILITY 176.000km MAIN NORTH LINE AREAS OF DISTURBANCE FILL		FILE No. 2216395-16-FIG-C0003	DRAWING NUMBER 2216395-16-FIG-C0003	ISSUE 5
	4 TITLE BLOCK CHANGE	WRB	26.3.13	DESIGN CHECKED	DESIGN MANAGER	DATE						
5 90% DESIGN REVIEW FOR TRACK LOWERED OPTION - GENERAL REVISION	WRB	28.3.13	DRAWN									
			DRAFTING CHECK									
			APPROVED	ISSUE AUTHORISED		DATE	DATE					
SCALES SHOWN ARE FOR AN A1 SIZE ORIGINAL DRAWING												

© 2013. Whilst every care has been taken to prepare this map, GHD, LPMa, Nearmap and Engenicom make no representations or warranties about its accuracy, reliability, completeness or suitability for any particular purpose and cannot accept liability and responsibility of any kind (whether in contract, tort or otherwise) for any expenses, losses, damages and/or costs (including indirect or consequential damage) which are or may be incurred by any party as a result of the map being inaccurate, incomplete or unsuitable in any way and for any reason.
Data source: LPMa: DT08 - 2007, Nearmap: Aerials - 2012, Engenicom: Design Data - 2012. Created by: mbarnier



DRAWING ADAPTED FROM IPLAN PLANNING PORTAL



Douglas Partners
Geotechnics Environment Groundwater

Sydney, Newcastle,
Brisbane, Melbourne,
Perth, Wyoong,

Wollongong, Campbelltown,
Townsville, Cairns

TITLE: LOCATION OF PREVIOUS INVESTIGATION DATA
PRELIMINARY CONTAMINATION ASSESSMENT, HEXHAM

CLIENT: QR NATIONAL		OFFICE: NEWCASTLE	
DRAWN BY: PLH	SCALE: 1:20000 (approx)	PROJECT No: 39798.06	DRAWING No: 4
DATE: 31.05.2012			