



# Shepherds Bay - Renewal

## Overall Concept & Public Domain Plan

Report Issue No. HOL02

18<sup>th</sup> June 2013 Rev F







Relevant DCP references to control document.  
Ryde (DCP 2011)

DCP 2011, 3.1 Analysis  
DCP 2011, 4.12 Public Domain Access & Pedestrian Cyclist Amenity  
DCP 2011, 4.15 Landscaping & Open Space  
DCP 2011, 4.205 Private & Communal Open Space  
DCP 2011, 4.2.6 Residential Amenity  
DCP 2011, 5.3 Precinct 3 - waterfront  
DCP 2011, 5.2 Precinct 2 'Constitution Road'  
DCP 2011, 5.4 Precinct 4 - Church Street

Relevant Public Domain References to Control Document  
City of Ryde Public Domain Technical Manual  
5. Meadowbank (5.1 & 5.2)

## contents - concept plan application

Page 5.....	List of Amendments
Page 6.....	Introduction
Page 7.....	Landscape Masterplan
Page 9.....	Landscape Indicative Levels Plan
Page 10.....	Landscape Masterplan Detail Areas
Page 11.....	Bowden Street Kiosk Park
Page 12.....	Upper Riparian Linear Park
Page 13.....	Lower Riparian Linear Park
Page 14.....	North West Apartments
Page 15.....	South West Pedestrian Link
Page 16.....	Formal Entry Avenue
Page 17.....	Upper Level Public Square
Page 18.....	Central Spine
Page 19.....	Central Foreshore Plaza 3000m <sup>2</sup> Recreational Reserve Detail 1
Page 20.....	Central 3000m <sup>2</sup> Recreational Reserve Detail 2
Page 21.....	North East Apartments
Page 22.....	Signature Building
Page 23.....	Stage One Landscape Masterplan
Page 24.....	Lighting Strategy (DCP 4.1.7 Safety, Controls 'c')
Page 25.....	Public Art Strategy (DCP 4.1.6 Street furniture & Public Art)
Page 26.....	Furniture Strategy (DCP 4.1.6 Street furniture & Public Art)
Page 28.....	Sitewide Streetscapes
Page 29.....	Typical Nancarrow blow up
Page 30.....	Streetscapes materiality
Page 31.....	Indicative Planting Philosophy Streetscapes
Page 32.....	Meadowbank street tree master plan
Page 33.....	Site wide Indicative Planting Schedule
Page 34-35.....	Appendices: Site through links design options
Page 36-37.....	Appendices: Pedestrian & cycleway routes







## contents - list of amendment (to comply with concept approval)

### Part B modifications -

#### Amended Concept Plan

We can confirm this document has been amended to include

- (a) Height and Setback Requirements (Refer to Architects Revised Preferred Project Report)
- (b) One contiguous open space of a minimum 3000m<sup>2</sup>
- (c) Public Domain Plan detail illustrating the proposed public domain treatment across the site
- (d) Increase in the width of the proposed site links / view corridors to a minimum of 20m
- (e) Provide an integrated WSUD strategy (refer to separate strategy document 15th May 2013 RevD)
- (f) Pedestrian and cycleway plans (refer to Pedestrian ways, Cycleways and Shared Zones diagram in Architect's Revised Preferred Project Report)

#### Detailed inclusions are;

##### Overall changes to masterplan -

- Updated 3000m<sup>2</sup> park
- Investigation into corridor/link to west of stage 1 (cycleway feasibility study)
- Redesigned landscape as a result of increased width of site through links  
(Changes respond directly to requirements outlined in Part B modifications/concept approval document)
- Addition of detention basins to landscape areas within the development, including Nancarrow road rain gardens (as part of the WSUD strategy)

##### Additions to meet Public Domain Plan requirements-

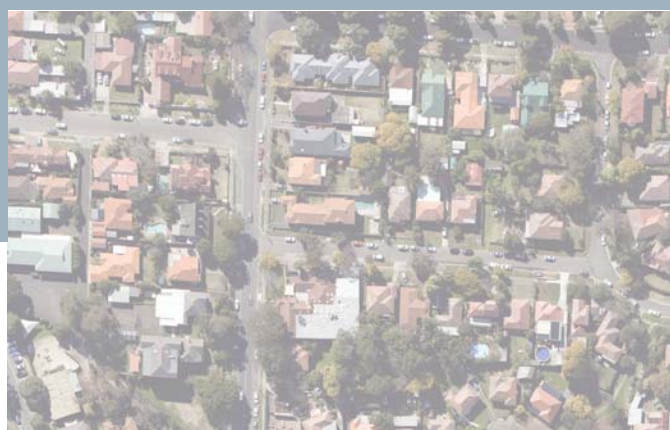
- Indicative landscape levels
- Additional streetscape detail design and additional streetscape sections
- Lighting strategy masterplan
- Furniture strategy masterplan
- Street tree masterplan for the site
- Street tree and rain gardens imagery and information
- Site specific furniture & material palette

(The inclusions to the document above to meet the requirements of the Ryde City Council Public Domain Technical Manual - 5. MeadowBank), & Ryde DCP 2011 Section 4.2, Shepherds Bay, Meadowbank.





## introduction



This document outlines the proposed Landscape Concept Plan to accompany the Major Project Concept Plan Application for the Shepherds Bay residential development. The project represents an opportunity to bring about positive change in current residential design trends by celebrating and bringing to life both the natural landscape and rich cultural history of the site in the landscape of the new development. It will also ensure that the Shepherds Bay site Landscape Design meets both the Proponents vision for the site and Council's planning objectives, long term objectives and area specific Public Domain Manual,

It is clear that the Proponent is seeking landscape design solutions that reflect the image and character of the Shepherds Bay Site as a fully integrated residential / parkland environment reflecting both the history and culture of the site. Water usage, recycling and movement are a key part of this history and will be reflected throughout the landscape design. The landscape design will draw upon a rich and varied site history:- the aim to enhance and create a culturally significant landscape setting that transcends past and present. In this way the landscape will serve to educate visitors and residents whilst enhancing the sense of place and creating a unique identity for Shepherds Bay.

The enjoyable and safe interaction between visitor, resident and the Water Sensitive Urban Design initiatives used through out the development will be a key area of focus in the landscape.

The retention and rehabilitation of significant existing vegetation where possible will be combined with an innovative site wide planting strategy. Structured planting using a predominantly native plant palette is proposed. The creation of view corridors to both proposed and existing park lands and the river precinct is seen as an integral component to the landscape and urban design philosophy. There will be an increase in biodiversity through street trees, integrated WSUD and planting to both public and private areas

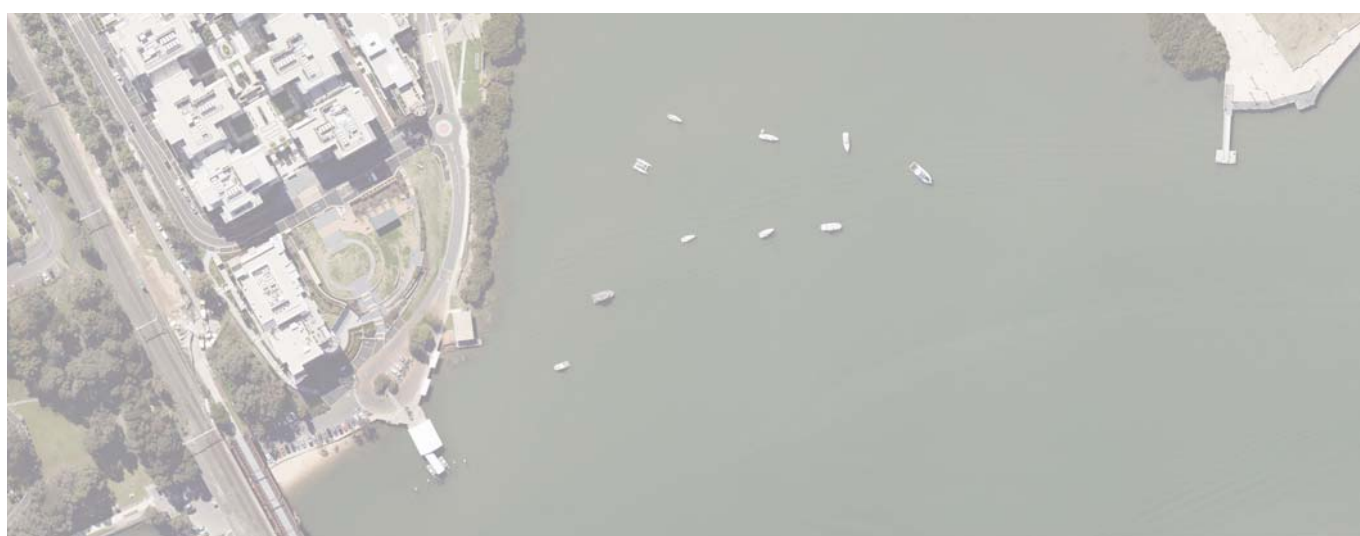
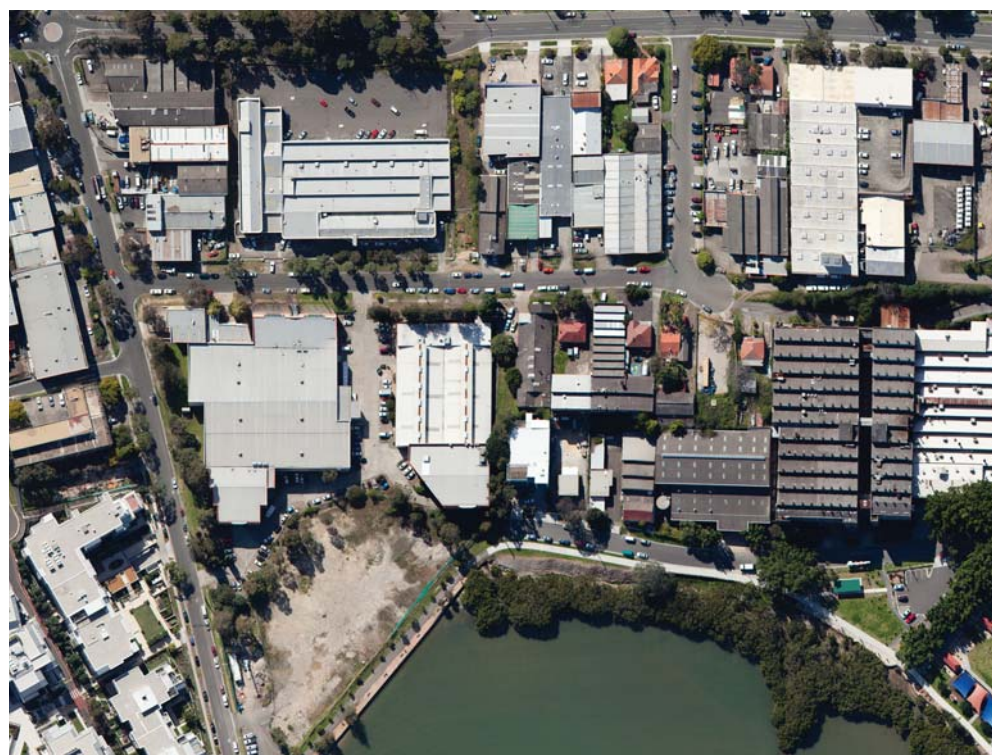
The landscape design philosophy recognises, inter alia, the current trends in the new home owners demographic. It is accepted that there will be a strong trend of responding to an increased community expectation of a range of active and passive recreational uses. This will include a range of site specific children play facilities across the site (to future detail). Pedestrian and cycle movement will also be addressed to the wider landscape and surrounding communities including legible connections and cycle locking facilities.

A vibrant central 3000m<sup>2</sup> contiguous open space plaza at the core of the development on the waterfront will be for passive & active recreation multi-use and adaptable for residents and public use. It is intended that this space become a place of celebration for community events, meeting people and taking advantage of the river views.

A Holistic approach to the landscape design combined with the careful interaction of landscape & architectural elements across the site will result in a 'big picture' design creating and reinforcing the local identity, character and sense of place.

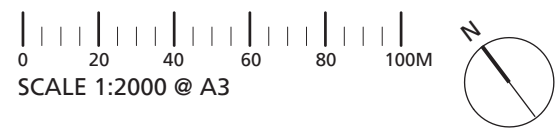
A sensitive and appropriate standard of landscape design is to be applied to the Shepherds Bay development so that the practical, aesthetic and social needs of the residents and community are realised.

Detailed design of all public domain areas are to be based on the CPTED principles for safety and security. The concept plan designs are indicative and intended as a guide to future detailed designs.





landscape masterplan







Nearmap view



# landscape indicative levels plan



0 20 40 60 80 100M  
SCALE 1:2000 @ A3



EL 0.00 - Existing Level  
FL 0.00 - Finished Level

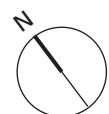




## landscape masterplan detail areas



0 20 40 60 80 100M  
SCALE 1:2000 @ A3





## bowden street kiosk park



3.5m Pedestrian access path

Bosque of ornamental shade trees

Linear deck to edge of Kiosk

Regular street tree planting

Buffer planting to boundary

Passive recreation turf space

Proposed building (not part of application)

Proposed kiosk / cafe building

Viewing deck with movable tables

## design intent

This new parkland is located adjacent to Bowden Street, on the western edge of the site.

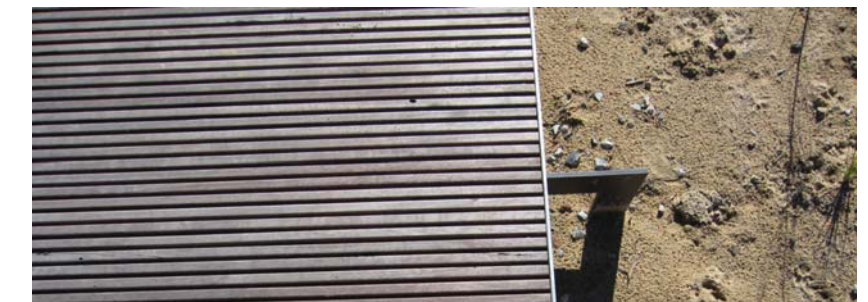
Open lawns and shade trees provide space for residents and visitors to stay and enjoy the peaceful surrounds. Surface material textures are varied for interest while retaining robust, low maintenance qualities.

Spaces are provided adjacent to a proposed kiosk building in anticipation of cafe / restaurant activation.

Large specimen tree planting will provide a buffer to adjacent proposed built form.

### Principles

- The provision of an easy, safe and enjoyable pedestrian experience with peaceful places to stop and relax
- Capitalise on key views to the water
- Provide a low maintenance parkland setting for adaptable use that is an inviting space for residents of the local area
- Combined active and passive recreation spaces
- Provision of spaces complementary to kiosk / cafe use

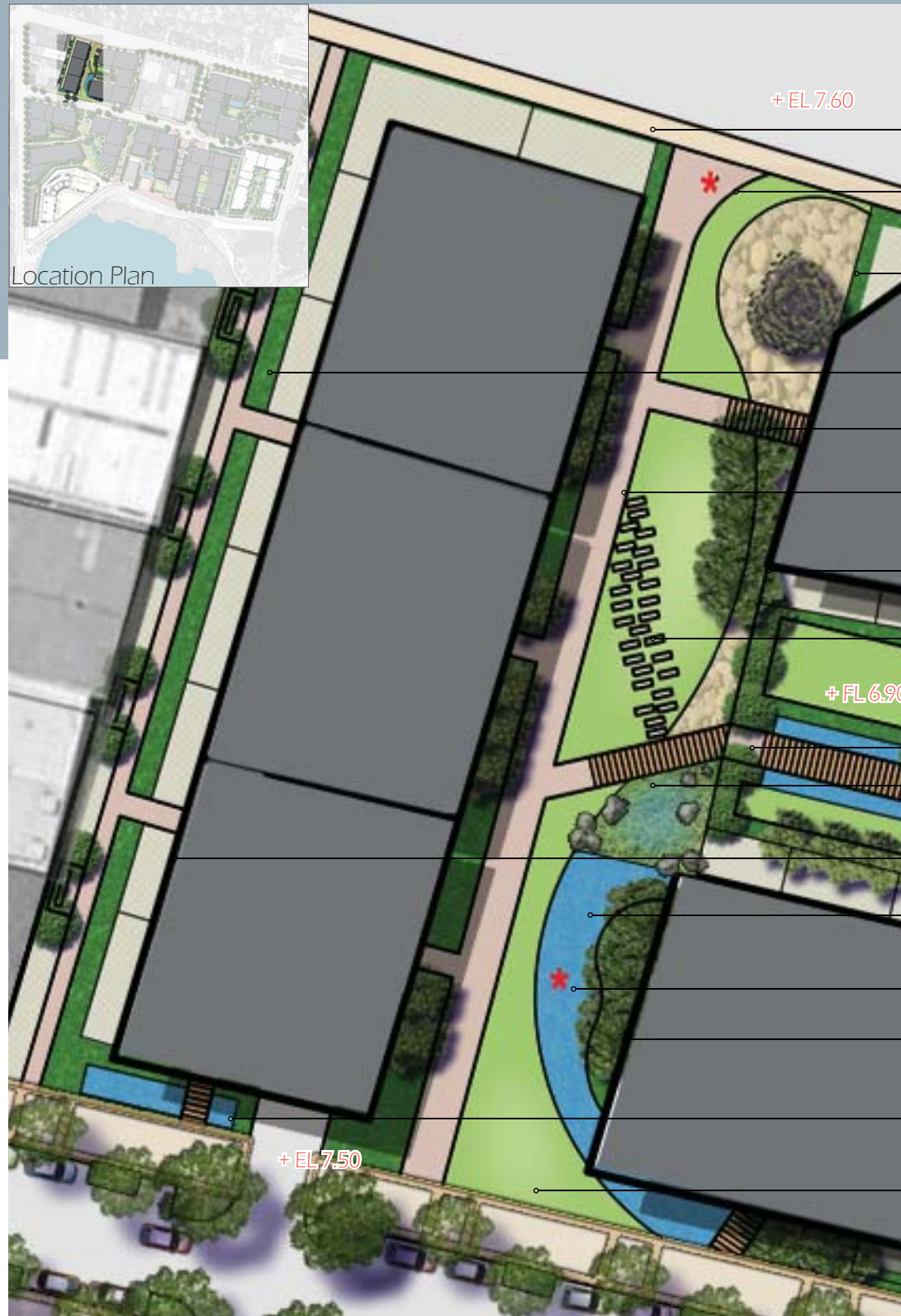


0 10 20 30M  
SCALE 1:500 @ A3

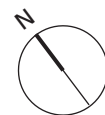




## upper riparian linear park



0 10 20 30M  
SCALE 1:500 @ A3



- Pedestrian footpath
- Sculptural Public Art opportunity to mark entry
- Dry creek/riparian zone
- Secondary pedestrian access
- Pedestrian bridge
- Main pedestrian axis Connection
- Lawn shade trees
- Stepping stones set in turf
- Access gate to Apartments
- Pedestrian bridge over WSUD basin / rain garden
- Private courtyards
- Open water body
- Sculptural Public Art
- Screening trees
- Indicative entry water feature and pedestrian bridge (subject to final building design)
- Open lawn

## design intent

This new parkland is located in a natural overland flow path and includes part of Council's main stormwater easement for the area. Below ground in this location Council plans to undertake significant upgrading of stormwater infrastructure in association with the reconstruction of Constitution Road. The intent of this parkland is to create a natural landscape with meandering 'riparian' gardens and water features. Natural water features will be designed to account for seasonal fluctuations in water volumes. Swathes of native grass and shrubs will provide interest along the pedestrian pathways which traverse this open space. It is intended that water features abut some of the buildings to accentuate the architecture within a riparian environment. Open lawns and shade trees provide space for residents and visitors to enjoy. Sculptural elements provide a perceptual thread that connects with the lower riparian linear park, leading users to the water.

### Principles

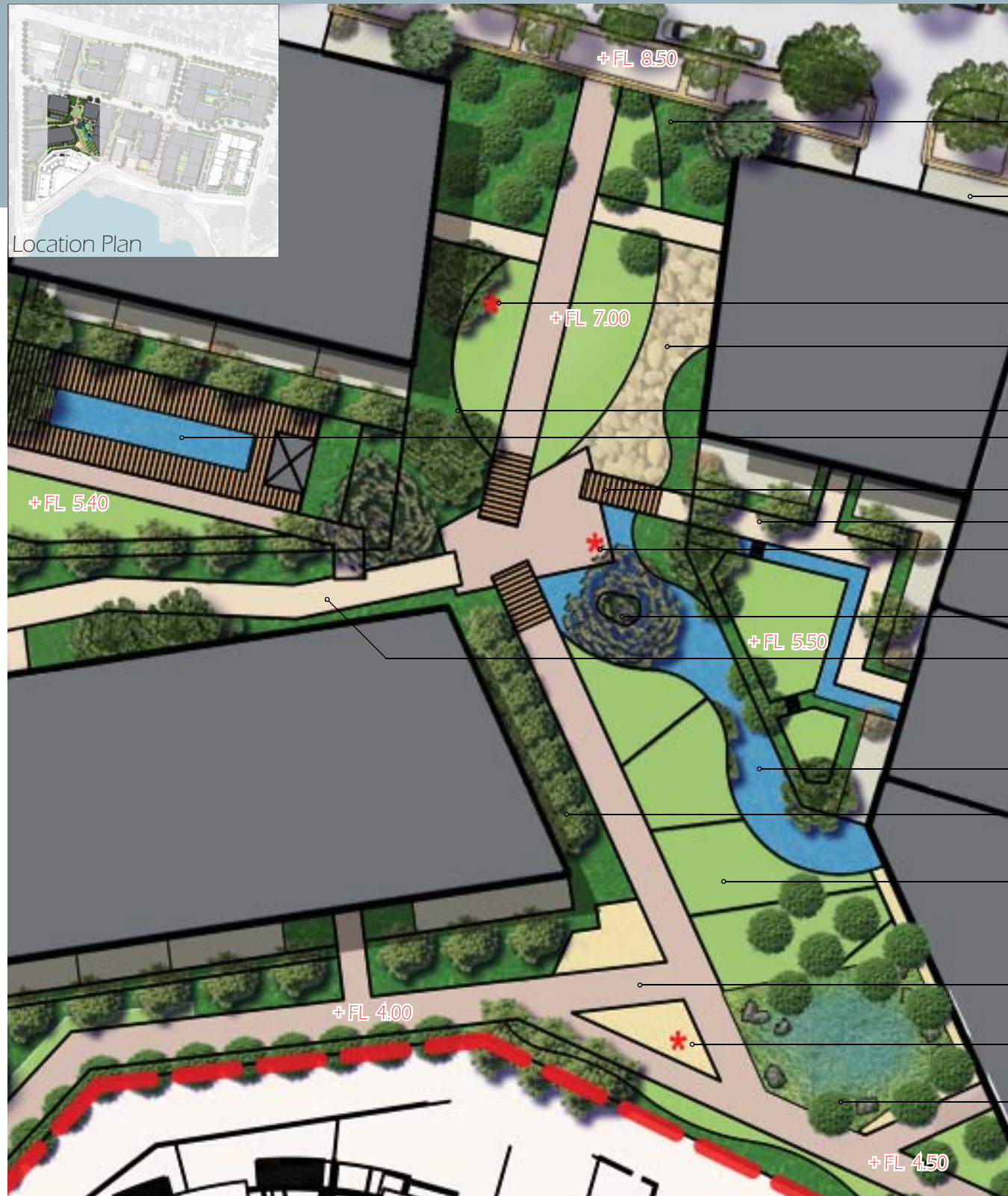
- The provision of an easy, safe and enjoyable pedestrian connection with peaceful places to stop and relax
- Optimise ecological functionality through planting of endemic species
- Incorporate overland flow paths into rain gardens within the parkland
- Combined active and passive recreation spaces
- Provision of contemplative lawns with shade





## lower riparian linear park

## design intent



Entry feature bosque tree-plantings

Private residential courtyard

Open lawn with sculpture

Dry creek/riparian zone

Shade tree planting

Fenced residential landscape with pool and deck

Pedestrian bridge

Residential podium landscape

Sculptural opportunity on feature plaza space

Island tree planting

Public path access from the west

Riparian water body

Low shrub and tree planting

Open tiered lawn as required

3.5m Pedestrian access path

Sculptural opportunity

Orchard style planting interpreting early orchard on the site

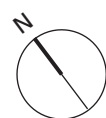
The interpretation of the riparian theme continues to the South. This parkland continues to follow the natural overland flowpath, terminating at the foreshore reserve. More water features and soft plantings are interspersed with a sequence of passive recreation lawns with specimen tree planting for shade. The orange orchard reflects the past uses of this site and creates a desirable area to sit and relax away from the more urban landscapes to the east.

### Principles

- Heritage interpretation of past land use
- Natural creek-like water features and plantings
- Low maintenance softscape & hardscape elements
- Temporary stormwater detention ponds and ephemeral creek beds
- Integrated WSUD basin & water catchment



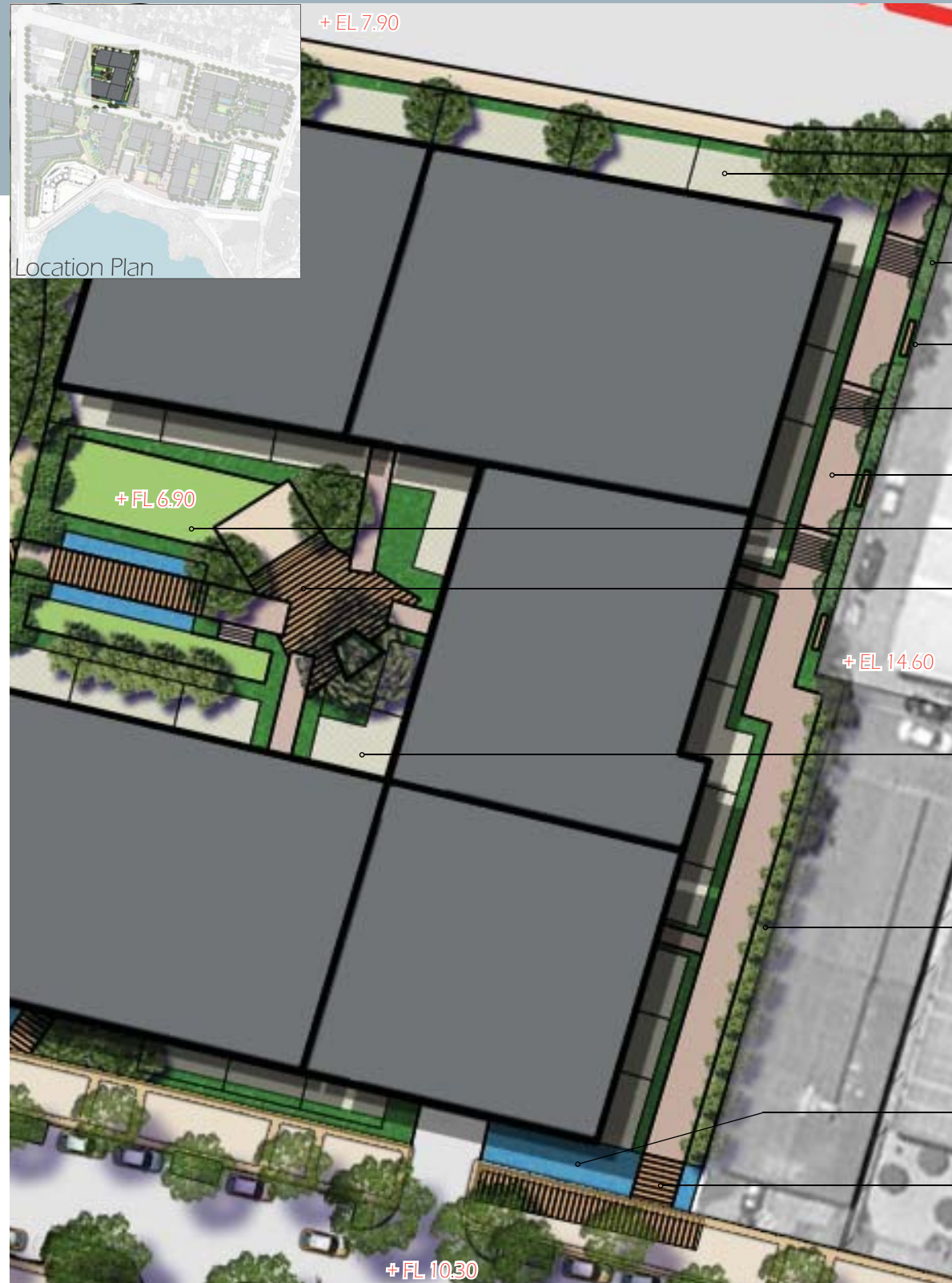
0 10 20 30M  
SCALE 1:500 @ A3







## north west apartments



Private courtyards

Shade trees

Bench Seating

Low shrub buffer planting  
to path edge

Linear 3.5m pedestrain access  
path

Open lawn space

Internal residents courtyard  
with pedestrian bridge and  
gathering deck

Private courtyards with screen  
planting

Buffer planting to existing  
buildings adjacent

Water surrounding  
building edge

Pedestrian bridge

## design intent

This residential landscape is intended to be contemporary in character with clean lines and useful spaces. Reflective water and defined linear vegetation will further enhance the space.

Pedestrians are encouraged to use the main entry or linear parkland corridors through the site. This allows enhanced safety for residents who will have access to both private and public landscapes.

### Principles

- Provides safe landscape amenity for residents while directing visitors to defined access points
- Incorporates tree planting of predominantly native or low water use tree species
- Includes useable spaces and elements that complement the architecture
- Includes water features and or sculptural elements





# south west pedestrian link

# design intent



The through site link to the south maintains clean and simple design character with an emphasis on access and circulation for visitors and residents alike. A small open plaza will act as a gateway to main foreshore plaza area. The cascading water rill which terminates in the open plaza provides visual interest and a connection to the waterfront beyond.

## Principles

- Performs as pedestrain link and gateway to surrounding spaces
- Low maintenance, high quality hardscape surface treatments
- Combined modern alignment / informal garden bed design
- Screen planting to exisiting complex adjacent
- Open lawn area for relaxation and views to waterfront
- Formal water features and or sculptural elements







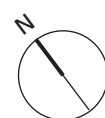
## formal entry avenue



Location Plan



0 10 20 30M  
SCALE 1:500 @ A3



## design intent

The design language for the main formal entry boulevard is based around a clear use of vegetative form and hardscape materials that establish visual identity and help foster a strong sense of place.

### Principles

- Formal tree planting in avenue style
- Tree species to complement entry artwork and scale of street
- Utilise verges where possible for integrated stormwater management
- Incorporate significant streetscape elements such as lighting and signage.
- Respect site lines at entry





# upper level public square

# design intent



Entrance Avenue

Feature paving

Bollards

Sculptural opportunity

Drop off / pick up zone

Formal shade tree planting

Water feature pop jets and interactive play

Steps to lower ground

Private residential courtyard

Cascade water feature

Located at the southern end of the formal entry avenue, the public square will be a focus of identity and include a signature art work at the central roundabout. There will be a modern European feel to the plaza which could incorporate pop jets, signature bollards and seating elements. Views toward the river to the south are integral to the space.

## Principles

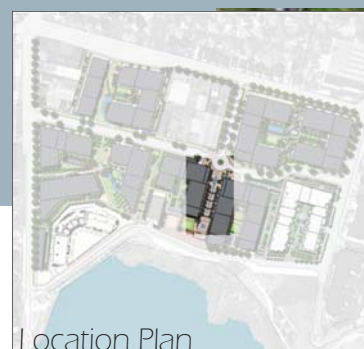
- Protection from Southerly & Westerly winds through tree planting
- Opportunity for interactive childrens water play
- Iconic sculpture on axis
- Signage palette and interpretive boards relating to the view
- Shared zone to ensure slow speeds and pedestrian safety
- High quality European hardscape palette
- Introduction of significant evergreen specimen trees



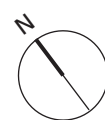




## central spine



0 10 20 30M  
SCALE 1:500 @ A3



## design intent

The central spine links the public square with the central open space and performs a largely transitional function combined with a wide pedestrian linear grand staircase that navigates the changes in level. A narrow water rill would reinforce the pedestrian movement while also visually connecting water to the North & South.

### Principles

- Incorporation of water storage and movement relating directly to the river
- Raised trees in planters create shade and enforce/frame linear nature of space
- Simple design with high quality hardscape
- Integrated lighting / water feature.





## central 3000m<sup>2</sup> recreational reserve detail 1

## design intent



This parkland/plaza is intended to act as the main activity core and place of celebration of the new development. The central plaza is to maximise various level changes through the use of cascading water features, elevated platforms with views, terracing and multi-functional, adaptable spaces that promote social interaction and help to create a strong sense of place and community. The integration with the river and mangroves set the backdrop to what will be a high quality landscape space with a heavy pedestrian focus.

### Principles

- Maximise views to the river and associated vegetative communities
- Combined soft/hard landscape for varied uses
- High quality spaces to encourage interaction and community values
- Attractive, robust, sustainable and low maintenance landscape finishes
- Provide and integrate artwork
- Provide interpretive signage to reflect upon adjoining riverside vegetative community.

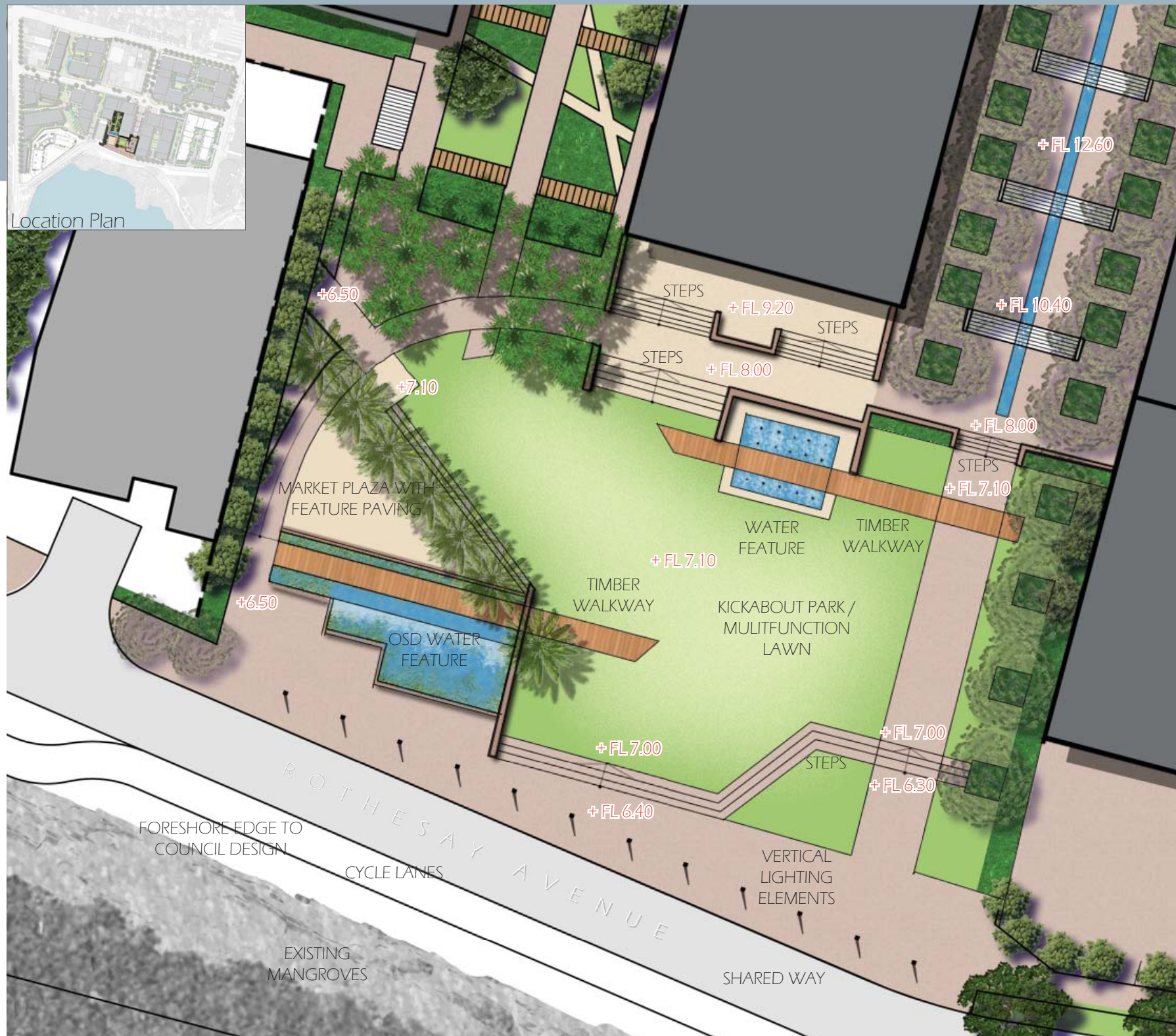


0 10 20 30M  
SCALE 1:500 @ A3

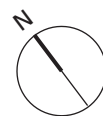




## central 3000m<sup>2</sup> recreational reserve detail 2



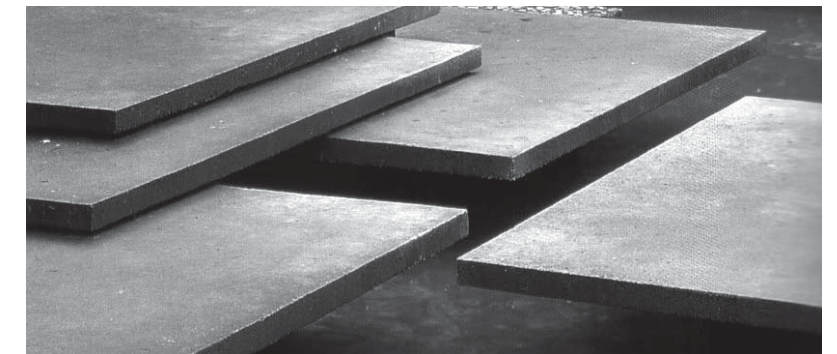
0 5 10 15 20M  
SCALE 1:400 @ A3



## design intent

### Principles

- Provide spaces that bring people together where they can share (views, activities, uses) and interact
- Maximise views to the river and associated vegetative communities
- Multi-functional and adaptable spaces and treatments
- Provide ample seating with a variety of outlooks through benches, incidental edges and turf
- Night time lighting and activation
- Attractive, robust, sustainable and low maintenance landscape finishes
- Provide and integrate artwork
- Provide interpretive signage to reflect upon adjoining riverside vegetative community
- Large size active & passive recreation areas.





## north east apartments

## design intent



Location Plan



Entry gate

Feature paved path

Small pavilion

Specimen trees in raised planted beds with sitting edge

Swimming pool and decking

Central 'floating' pavilion with decking and integrated seating

Open lawn

Layered shrub and ground cover planting

Focal water feature with bubble jets

Private courtyard space

Entry gate with specimen tree planting

Rain garden

This space, secondary pedestrian link between Constitution Road and Hamilton Crescent, is to be a predominantly linear, formal space with a sequence of shaded courtyards for rest and contemplation, shade trees and communal spaces

### Principles

- Split level high quality landscape with raised planter beds
- Incorporate safe, open outdoor seating areas to activate the precinct
- Canopy trees and possible structures that comply with CPTED and provide shade & amenity
- Use of deciduous trees for solar access in winter



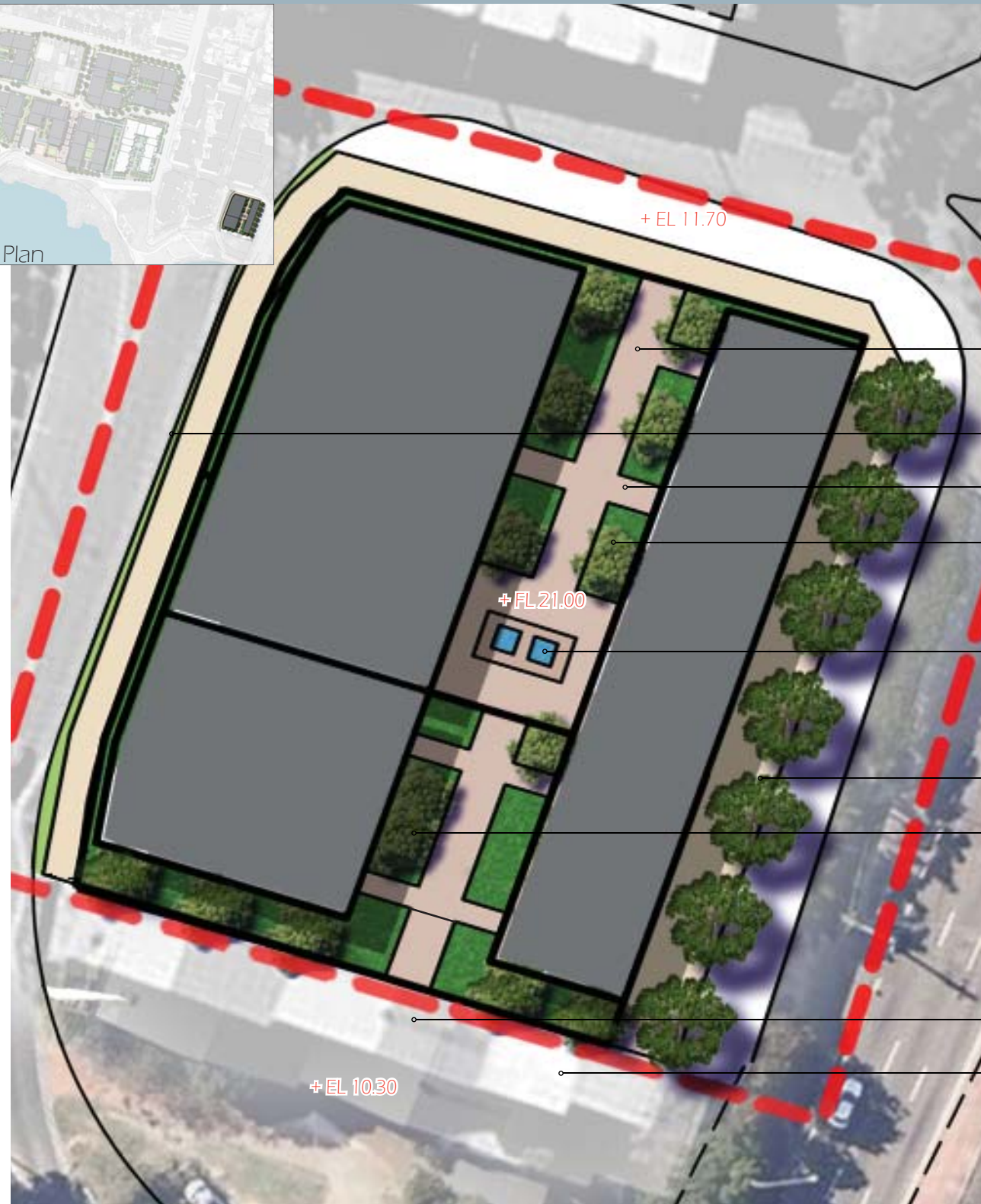
0 10 20 30M  
SCALE 1:500 @ A3







## signature building



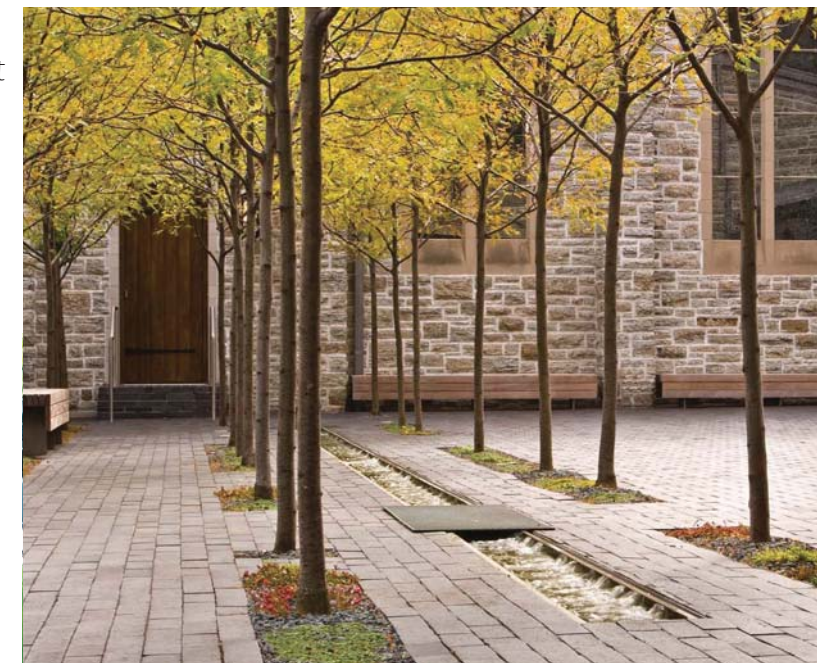
- Linear path
- Street Trees
- Entry points to building
- Feature Trees
- Central formal water feature
- Buffer planting to Church St
- Linear trees outlining path
- Viewing Deck
- Low shrub under-planting

## design intent

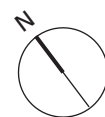
The Signature Building precinct sees a strong linear path and formal tree planting around the perimeter with clear sight lines. The pedestrian link is to be punctuated by formal water features that align with the linear paths. The shade trees and water features are intended to soften the built form and provide soothing acoustics to the space and the surrounding residents.

### Principles

- Clear lineal paths with high quality central open space
- Incorporates safe, open outdoor seating areas to activate the precinct
- Canopy trees and possible structures that comply with CPTED and provide shade & amenity
- Use of deciduous trees for solar access in winter



0 10 20 30M  
SCALE 1:500 @ A3





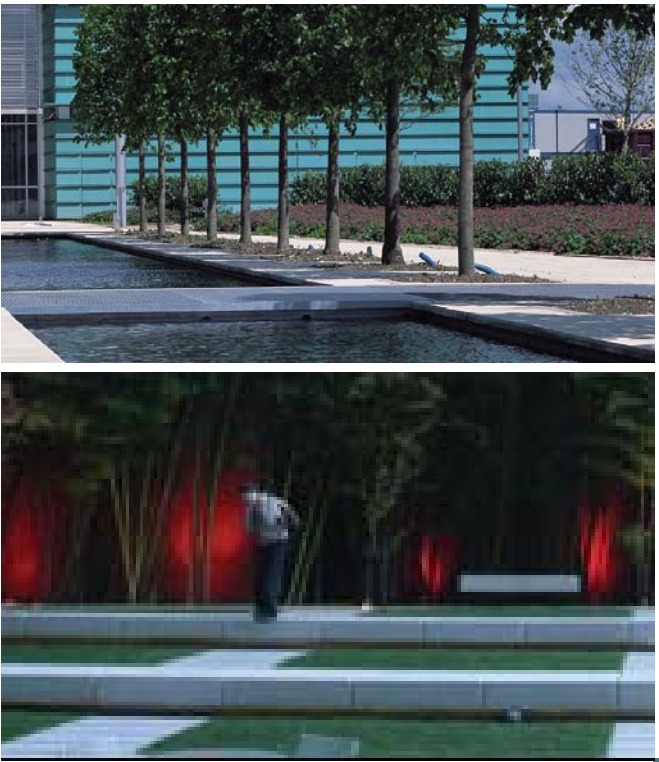
# stage one - landscape masterplan

# design intent

Stage One will be maintained and managed by the body corporate, the space is one of high quality with a design style that is intended to work seamlessly with the architecture. This high quality will be reflected in the choice of hardscape material, furniture palette and the size and condition of the planted material. External spaces will be of similar character, whilst catering for greater usage. Please see Stage One Project Application report for details on individual areas.

## Principles

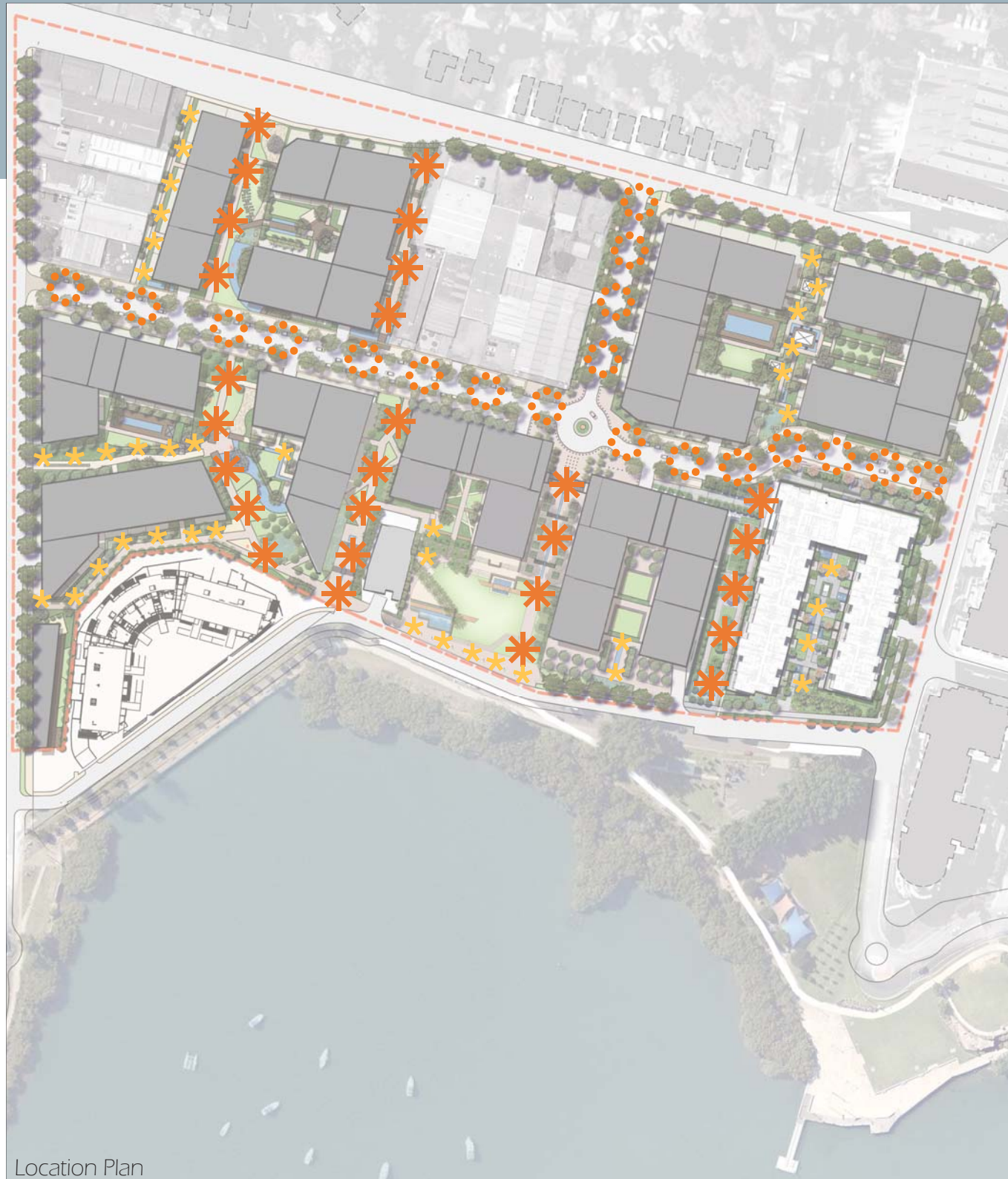
- Turf and paved plazas respond directly to the architectural alignments for a seamless transition between landscape and building
- Structured planting and specimen shade trees frame spaces
- Open lawn platforms provide areas for relaxation
- Furniture elements will match the bold, simple lines of the design and contrast with the textures of the planting palette
- Moving water bodies provide associated relaxation and acoustic benefits
- Existing fig trees are retained to Rothesay Avenue with manicured lawn understorey







## lighting strategy



Location Plan

**Pedestrian & Vehicular Lighting**  
**Street lighting**  
Mounted on 9.6m multifunction poles to Council approval. Finish on poles to match existing poles in Belmore Street. Poles to be provided with 1.5m banner arm, Rexel Optispan Aeroscreen luminaires complete with low loss ballasts and PE cells, and metal halide lamps.

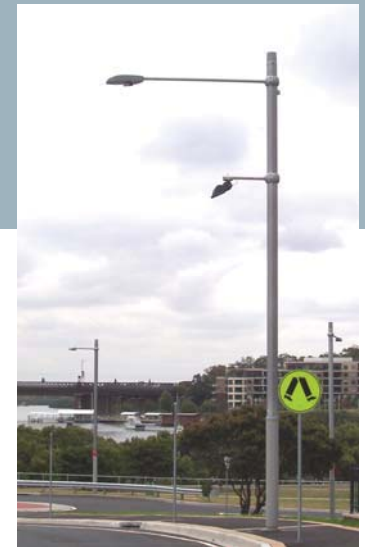
**Pedestrian/park lighting**  
For areas such as shared bikeway/pedestrian pathways and plazas. Mounted on 4.8 m Smartpoles™ or approved equivalent. BEGA-8081 luminaires and metal halide lamps.

**Solar lighting for parks**  
Supplier: Solar G  
Pole: galvanised utility pole  
Light fittings: "Streetwalker" on 1 metre outreach arm  
Lamps: 2x 14W fluorescent (T5 fluorescent technology, 96 lumens per watt).

**General requirements**  
Street and park lighting to be in accordance with AS/NZS 1158 to minimum lighting levels of subcategory V3 (collector roads), V5 (secondary streets) and P2 (cycle and footpath areas). Higher lighting levels where required by the standard (eg.transport interchanges, pedestrian crossings). Weatherproof lockable cubicle to be provided to Energy Australia's requirements to house the switchboard and meter. Connection to Ausgrid network to their requirements. Spare 63mm dia electrical conduit to run between multifunction poles for future use.

Ref: City of Ryde Public Domain R+Technical Manual - 5.2

NOTE: Diagram is a strategy only, and is dependant on future detail design for specific information on products and locations



Multifunction poles at Parsonage St, Meadowbank



Pedestrian light at Meadowbank station plaza



Solar light at Meadowbank

All images from the Public Domain Technical Manual



## public art strategy

## design intent



Ref: Ryde DCP 2011 - 4.1.6 Street furniture & public art



Example of entrance sculptures



Example of central vertical sculpture



Example of reflecting historical site use



Example of lighting sculpture for boardwalk



Existing foreshore sculptures to be extended



The public art strategy applied to the site will aim to trace the rich and diversified history that Meadowbank has enjoyed since settling in 1790. The aim of the public art is to allow users to appreciate how the site has been used over time and transformed into what they see today. This will involve exploring the major uses of the Meadowbank area including its history as a working farm, its connection with water, boating activities and its manufacturing & industrial history.

Public art will also be applied to the site for way finding, marking pivotal points & thresholds, signage and lighting. The public art will not be intrusive to users nor the landscape but rather work in a subtle manner and be integrated into the landscape design. It will also attempt to remain in line with the 2006 Art Strategy developed by Ryde City Council, and wherever possible establish strong connections and links with existing and proposed art that forms part of the strategy.

Preliminary studies have brought to the surface numerous possible artwork opportunities that such as using the form of a boat to inform seating designs, sculptural elements and water features. A lighting sculpture to mark the central point of the development, seen from surrounding areas and riverside is recommended. A sculptural element that will act as a way finding device to guide users through the waterfront mangroves and number of various quirky installations that allude to the former uses of the site such as the planted spanner seen on the left.

Multiple sculptural elements are proposed for the riparian linear parkland as a strategy to engage with users and provide supplementary wayfinding. Elements may interpret subterranean stormwater / water movements and function to integrate with the landscape concept.

Continuation of the row boat pole sculptures / wharf totems along the foreshore reserve should also be considered.





## furniture strategy



Location Plan

**Seats (Seat 1)**  
Urban Seat 11 (aluminium)  
Botton and Gardiner urban furniture  
ph (02) 9667 8100

**Bins (Bin 1)**  
Council's standard double bin.

**Bollards (Bollard 4)**  
1300mm high x 150mm dia  
1.6mm thick 316 stainless steel  
Core drilled to depth of 400mm.  
Colorfen Constructions  
Ph (02) 9545 4284

**Trellis (Trellis 1)**  
Stainless steel uprights 1200mm high at intervals of 1200mm.  
Five tensioned wires at 220mm horizontal intervals.  
Sub-surface mounted trellis within planter bed.  
Concrete footing for each post.

Ref: City of Ryde Public Domain R+Technical Manual - 5.2

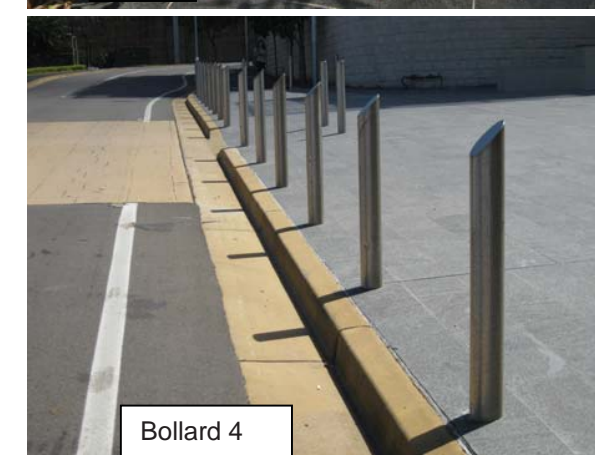
NOTE: Diagram is a strategy only, and is dependant on future detail design for specific information on products and locations



Seat 1



Bin 1



Bollard 4



Trellis 1

All images from the Public Domain Technical Manual 5.2



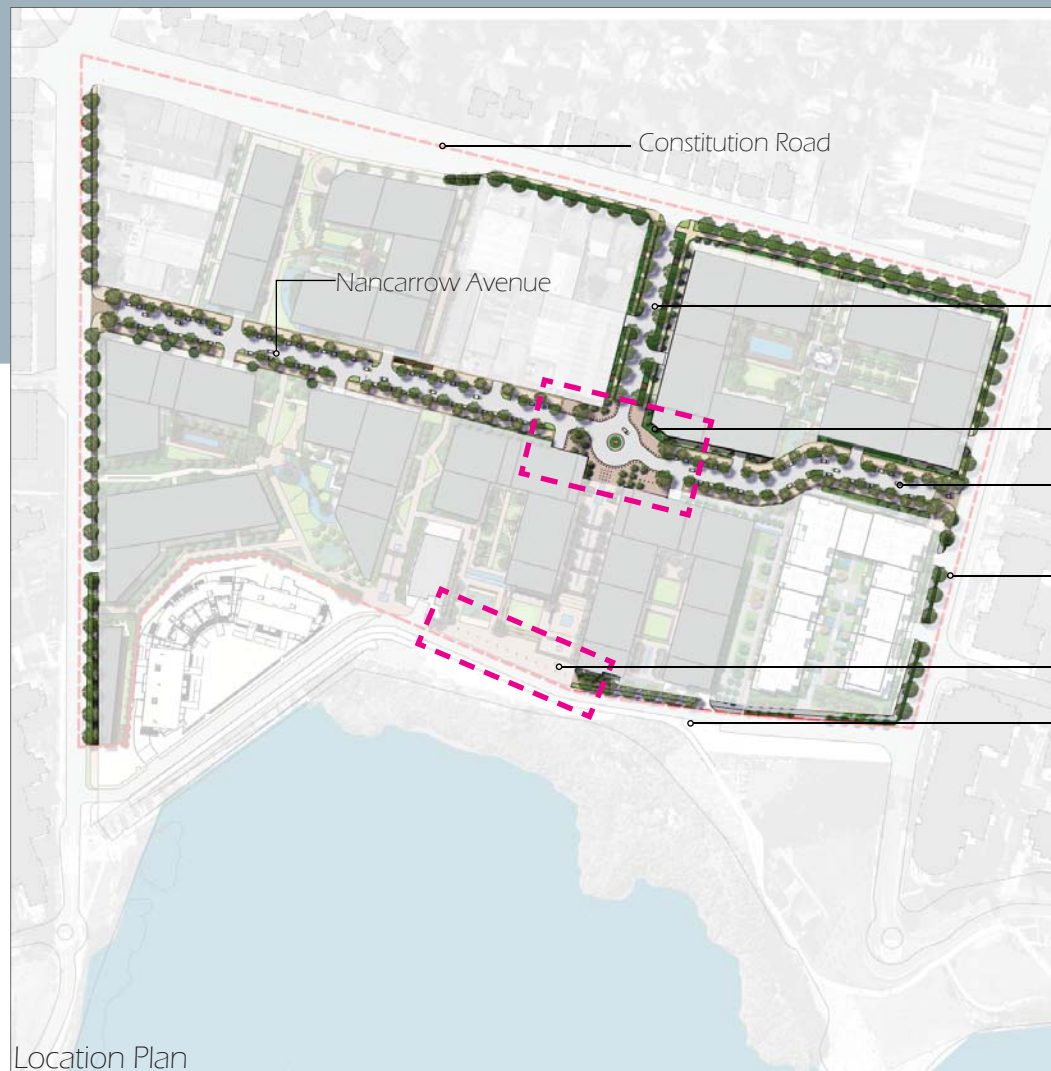


Nearmap view of Holdmark site





## site wide streetscapes



Location Plan



Hamilton Crescent

Proposed shared surface

Hamilton Crescent

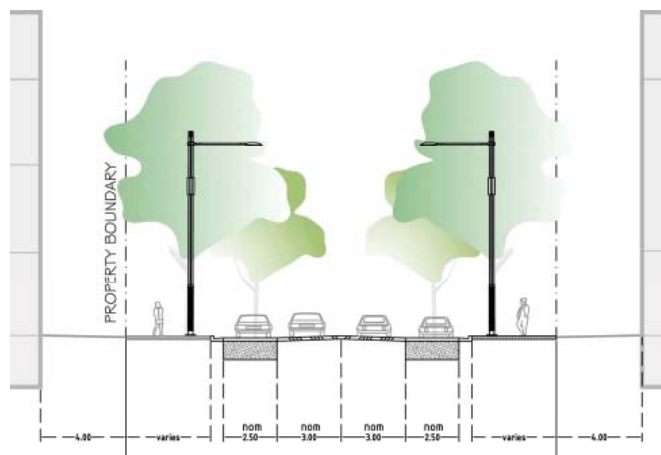
Belmore Road

Proposed shared surface existing allowing for clear connection to opens space

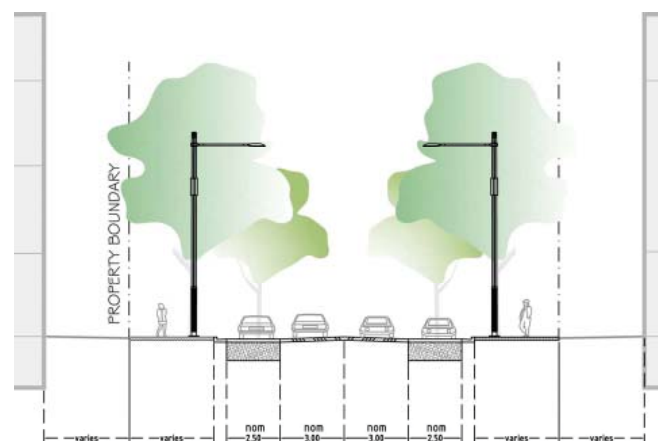
Rothsay Avenue



Example of shared surface



Shepherds Bay - Nancarrow Road Section  
Ryde City Council Guidelines  
Ref - Ryde Public Domain Technical Manual - 5.2



Shepherds Bay - Typical Street Section  
Ryde City Council Guidelines  
Ref - Ryde Public Domain Technical Manual - 5.2

## design intent

The Shepherds Bay Streetscape Character and Tree Species will reflect the character of the site whilst accommodating for the requirements of Council. The functional needs of pedestrians, cyclists and vehicular movements will also be paramount in the design of vehicular carriage ways.

The streetscape character will generally reinforce and enhance the road hierarchy to create subtle but distinctive streetscape precincts. The formal planting of mid to large size trees on Primary Local Roads (Dependant on Council approval) and the introduction of smaller native species on Secondary Local Roads will occur. A combination of both native and hybrid indigenous trees must dominate the selection of street trees to the internal roads.

Streets are to be designed to provide an appropriate level of on street parking with priority given to pedestrians and cyclists to provide a pleasant environment to promote walking and social activity.

Some key points are listed below;

### Aspect and Views

- Strong visual associations with existing vegetation communities both native and cultural.
- Use of Landmark species to clearly identify entry points into the development.
- Strong emphasis to avenue planting with spacings of trees to enable canopies to touch when trees are mature.

### Accessibility

- Continuity of streetscape character and connectivity to local and recreational paths linking the entire site.

### Materials:

- Pathways will predominantly be robust contemporary materials such as exposed aggregate concrete. All driveway cross overs are to be of the same material in order to ensure visual continuity.

### Plantings:

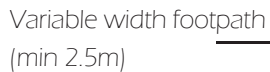
- Maximise landscaping in all streets while tailoring species selection to that of the local and site context.
- Preservation of plantings of culturally significant species to enhance the historic 'sense of place'
- Canopy trees to provide shade and visual amenity.
- Low shrub and groundcover planting using a mix of low maintenance plant species

### Safety:

- All street trees will be carefully selected so that the pedestrian sight lines are well maintained.
- Street lighting and feature lighting will also be carefully designed to meet the safety criteria for pedestrian/cycle and car links.



**typical nancarrow street blowup**



Street tree in rain garden \_\_\_\_\_

Grey granite pavers  
& banding

4m setback



Typical treatment  
Ref: Ryde Public Domain Plan 5.2

## Principles

- Rain gardens with street tree planting, approx 4m x2m to Council specifications.
- Appropriate streetscape tree selection.
- Australian porphyry stone.
- Grey granite pavers & banding.
- Provides 65 on street car park spaces.

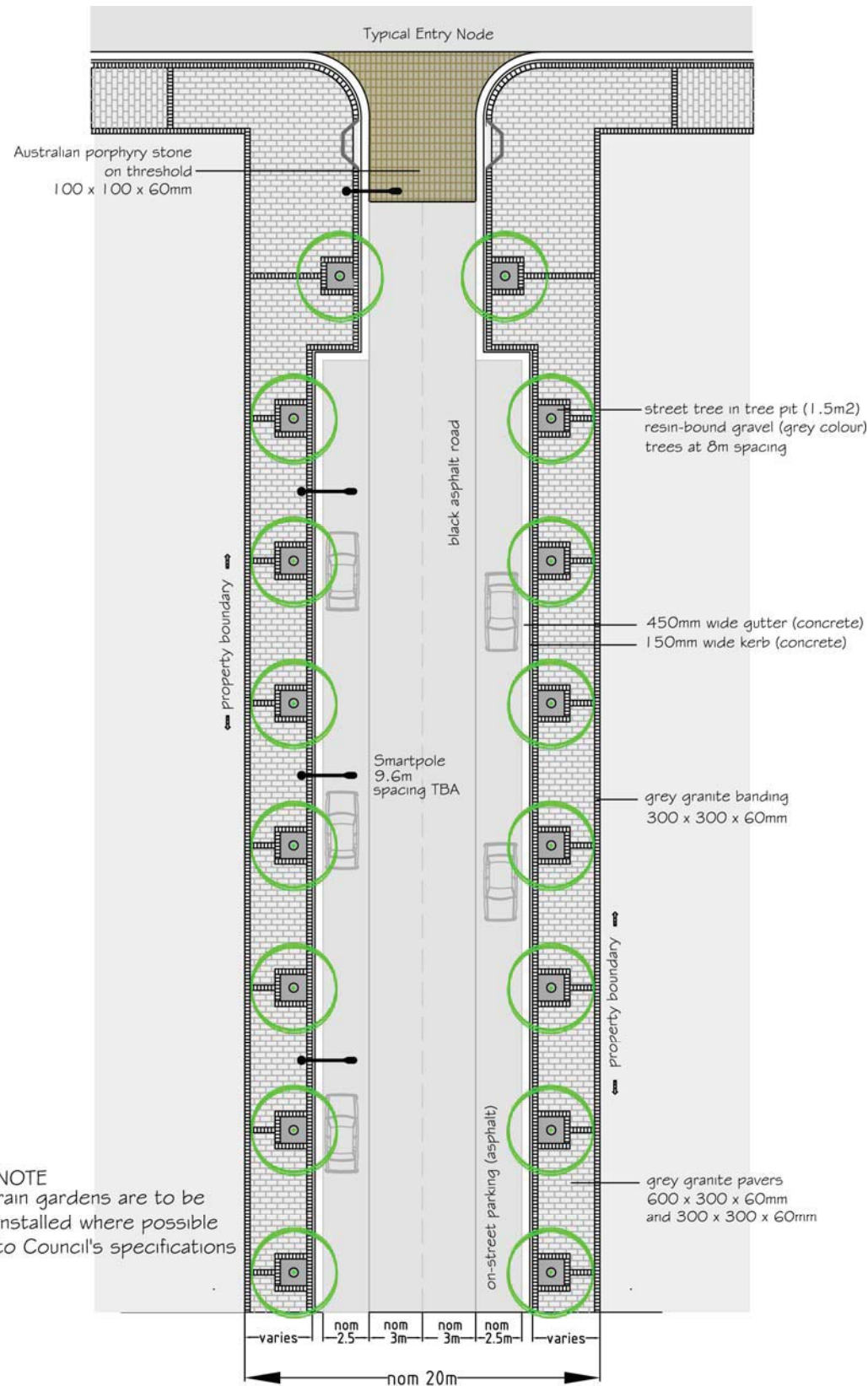






## streetscapes materiality

Typical Street Plan for all other streets in Meadowbank (excluding Nancarrow Road)



NOTE  
rain gardens are to be installed where possible to Council's specifications

Typical Street Treatments  
Ref - Ryde Public Domain Technical Manual - 5.2

### Pavements

#### Materials Palette—

##### Summary

Footpaths: grey granite paving.  
Kerb & gutter: in-situ concrete.  
Carriageway (typical): asphalt.  
Foreshore pedestrian/cycleway: natural concrete.  
Thresholds: Australian porphyry stone.  
Special places: sandstone paving.  
Tree pits: resin-bound gravel.

### Footpaths

Main paver: grey granite 600 x 300 x 60mm & 300 x 300 x 60mm.  
Banding: grey granite 300 x 300 x 60mm.  
Concrete compressive strength  $\leq 25\text{Mpa}$ .

### Thresholds

Australian porphyry stone 100 x 100 x 60mm laid at 30o to kerb.  
Concrete in-situ kerb.

### Special places (low pedestrian traffic)

Sandstone paving 600 x 300 x 100mm.

### Tree pits and permeable paving

Resin-bound gravel (grey colour).

### Pedestrian/cycleways

3m wide natural concrete.



All images from Ryde Public Domain Technical Manual - 5.2



Grey granite paving at Railway Road, Meadowbank.



Natural concrete shared pedestrian/cycleway, Parramatta River foreshore, Meadowbank.

Note sandstone paving provides a setting for artworks (special place).



Australian porphyry stone for thresholds.



Sandstone paving 600 x 300 x 100mm (Ryde Wharf Park).



indicative planting philosophy - streetscapes

Street trees and rain gardens

*Fraxinus griffithii* (Evergreen Ash)

Planted as street trees on  
Railway Road, Meadowbank

Note kerb breaks for stormwater entry.



Rain garden

At the corner of Railway Road  
and Constitution Road, Meadowbank



Rain garden

At Meadowbank station entry, east side.



Street trees throughout the site will be reflective of the Meadowbank street tree master plan (Page 32). The street tree design to the site is intended to enhance strong legible links, providing biodiversity and aesthetic consistency across the site, both in streetscapes and site through links.

All planting will be in accordance with the DCP, Council Public Domain Technical Manual and Council guidelines.

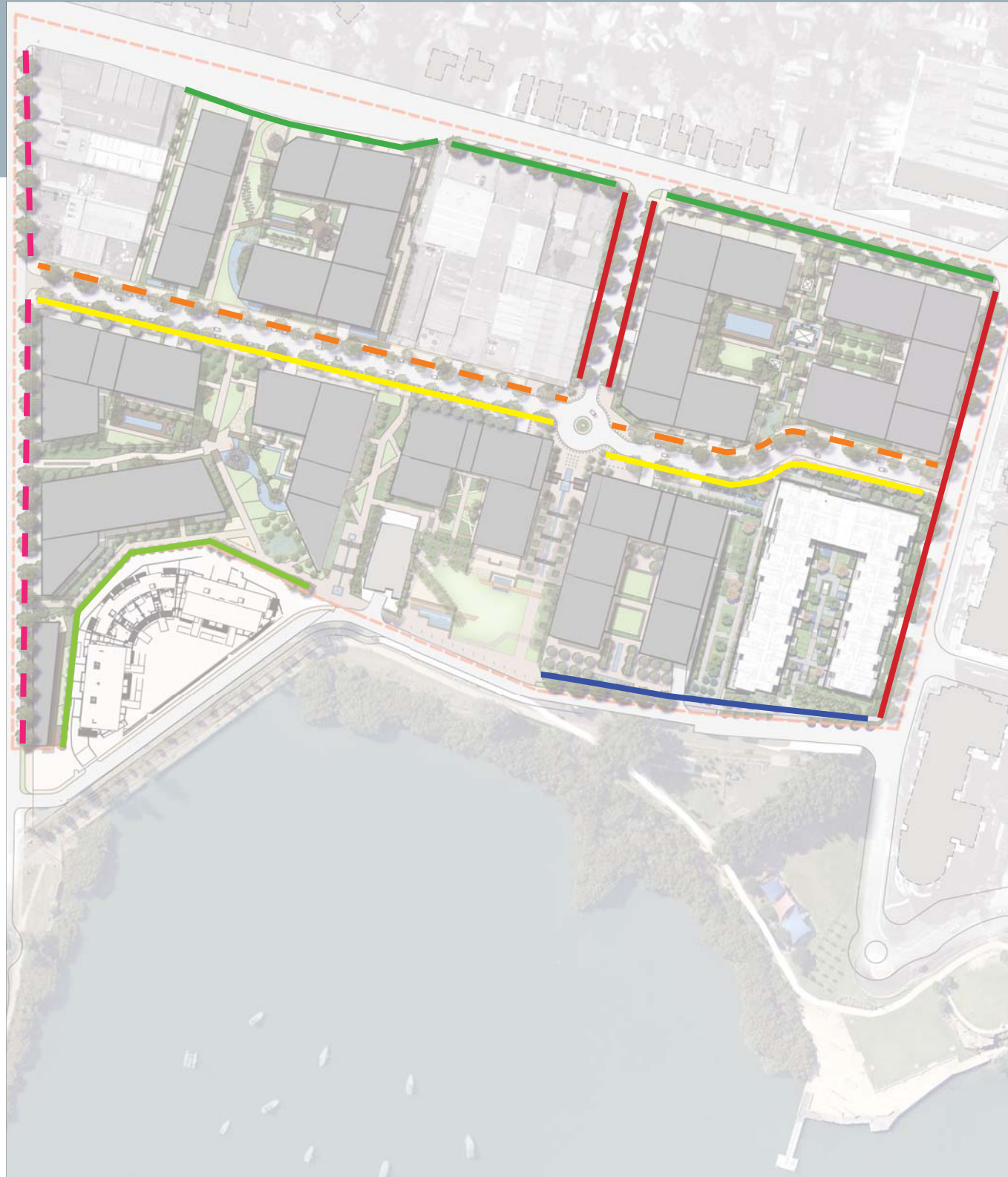
Refer to WSUD document for detail on rain garden.s







## meadowbank street tree master plan



### LEGEND:

- *Corymbia maculata* (Spotted Gum)
- *Angophora costata* (Sydney Red Gum)
- *Cupaniopsis anacardioides* (Tuckeroo)
- *Magnolia grandiflora* ('Little Gem')
- - - *Fraxinus griffithii* (Evergreen Ash)  
*Fraxinus oxycarpa* 'Raywoodi' (Claret Ash)
- *Syncarpia glomulifera* (Turpentine)
- *Melaleuca* sp. (Paperbacks)
- - - *Angophora floribunda* (Rough-barked apple)

The plan shows the intended tree species to be used in the development. Existing street trees will be assessed on an individual basis to retain if possible. The suitability of the species listed below will also be considered at the detailed design stage and discussed with Council.

Note: All existing street trees will be assessed in light of this plan and retained if appropriate.

Ref - Ryde Public Domain Technical Manual - 5.2



# indicative planting schedule - sitewide

# design intent

SYM	BOTANICAL NAME	COMMON NAME	HEIGHT	SPACING	POT SIZE
DECIDUOUS TREES					
	Pistascia chinensis #	Chinese Pistache	12m	As Shown	100L
	Plantus x Hybrida	Chinese Tallowood	12m	As Shown	100L
	Pyrus calleryana 'Chanticleer' #	Manchurian Pear	12m	As Shown	100L
	Sapium serbiferum #	Chinese Tallowood	12m	As Shown	100L
	Ulmus parvifolia #	Chinese Elm	12m	As Shown	100L
EVERGREEN TREES					
	Angophora costata	Smooth Barked Apple	20m	7 - 8m	200L
	Corymbia maculata	Spotted Gum	20m	As Shown	45L
	Cupaniopsis anacardiodes	Tuckeroo	10m	As Shown	75L
	Elaeocarpus reticulatus	Bleuberry Ash	12m	As Shown	75L
	Lophostemon confertus	Brush Box	20m	As Shown	75L
	Tristaniopsis laurina 'Luscious' #	Water Gum	12m	As Shown	75L
	Waterhousia floribunda #	Weeping Lily Pily	8m	As Shown	75L
SHRUBS					
	Acacia parramattensis	Sydney Green Wattle	3-4m	As Shown	25L
	Acacia falcata	Sickle-shaped Acacia	2-3m	As Shown	25L
	Altenanthera dentata	Blood Leaf Irisene	1m	500mm	25L
	Banksia serrata	Dwarf Bottlebrush	1.0m	4m2	5L
	Cordyline sp.	Cordyline	2m	4m2	5L
	Dodenaea triquetra	Hop Bush	2m	2m2	25L
	Dodenaea viscosa 'Purpurea'	Purple Hop Bush	2m	2m2	25L
	Doryanthes excelsa	GyMEA Lily	1.5m	1m2	25L
	Gardenia augusta 'Florida' #	Gardenia	1m	3m2	25L
	Kunzea ambigua	Tick Bush	3m	1m2	25L
	Murraya paniculata #	Orange Jessamine	3m	2m2	150mm
	Philodendron 'Xanadu' #	Xanadu	0.75m	5m2	200mm
	Syzygium sp.	Lilly Pilly	3m	1.0m	25L
	Viburnum odoratissimum #	Sweet Viburnum	6m	500mm	25L
	Westringia fruticosa 'Zena' #	Coastal Rosemary	0.75	500mm	25L
GRASSES & GROUND COVERS					
	Dichonra repens	Kidney Weed	0.2m	5/m²	150mm
	Dianella 'Breeze'	Paroo Lily	0.3m	7/m²	75mm Tube
	Dianella 'Little Jess'	Paroo Lily	0.4m	7/m²	75mm Tube
	Dianella 'Silver Streak' #	Paroo Lily	0.6m	5/m²	150mm
	Hardenbergia 'Purple Spray'	Native Violet	0.8m	3m2	150mm
	Hibbertia scandens	Snake Vine	0.3m	4m2	150mm
	Isolepis nodosa	Club Rush	0.7m	5/m²	75mm Tube
	Juncus usitatus	Common Rush	0.7m	7/m²	75mm Tube
	Liriope 'El Marco' #	Turf Lily	0.3m	5/m²	150mm
	Lomandra hystrix #	Mat Rush	0.7m	7/m²	75mm Tube
	Lomandra longifolia 'Tanika' #	Mat Rush	0.6m	7/m²	75mm Tube
	Poa labillardieri 'Eskdale'	Tussock Grass	0.6m	9/m²	75mm Tube
	Scaevola aemula #	Fairy Fan-flower	0.5m	7/m²	75mm Tube
	Trachelospermum jasminoides #	Star Jasmine	0.6m	5/m²	150m
	Viola hederacea #	Native Violet	0.2m	5/m²	100mm

# - Denotes the plants specified for inteded use in Stage 1 development.

Note: Setbacks: 1. All setbacks to be planted with low native shrubs and exact spaced selection will be discussed with Council. (Ryde DCP 2011 4.2.2 - setbacks 'f').

2. Church street setbacks will be planted with large native trees (Ryde DCP 2011 4.2.2 - setbacks 'b2'+ 'b3') and be spaced 8m apart.

The Planting palette to be used throughout the site has been selected for it's suitability to fulfill the following criteria:

- Enhance the local character of Meadowbank
- Create a new defined precinct
- Remain in line with the City of Ryde's environmental policies
- Soften and visually reduce bulk/scale of built forms
- Provide buffering/screening to residential areas
- Contribute to habitats of the local fauna
- Minimise potable water use in the landscape

A wide selection of trees, both native and exotic, have been selected for the sites streetscapes and landscaped areas. Where possible local natives will be used to remain consistent with the vegetation communities found within the City of Ryde. Specific areas will see exotic species used for accent planting and foliage interest

Shrubs have been chosen not only for their aesthetic attributes but also functionality in terms of providing buffering and screening to residential precincts. Lush foliage and dense growing habits have been favoured.

Grasses and groundcovers have been selected from a predominantly native palette and will be aimed at softening edges and large areas of hardscape.

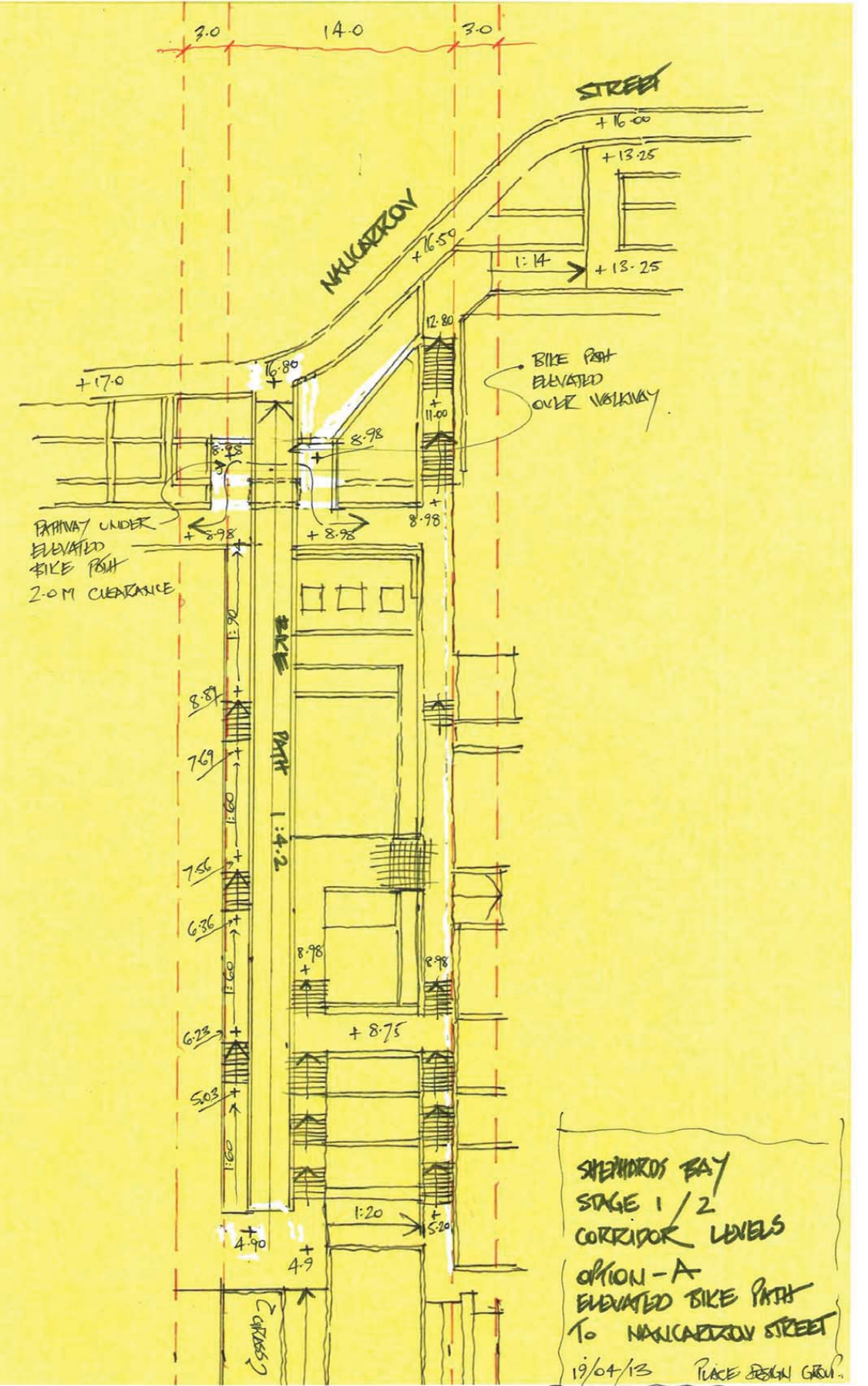
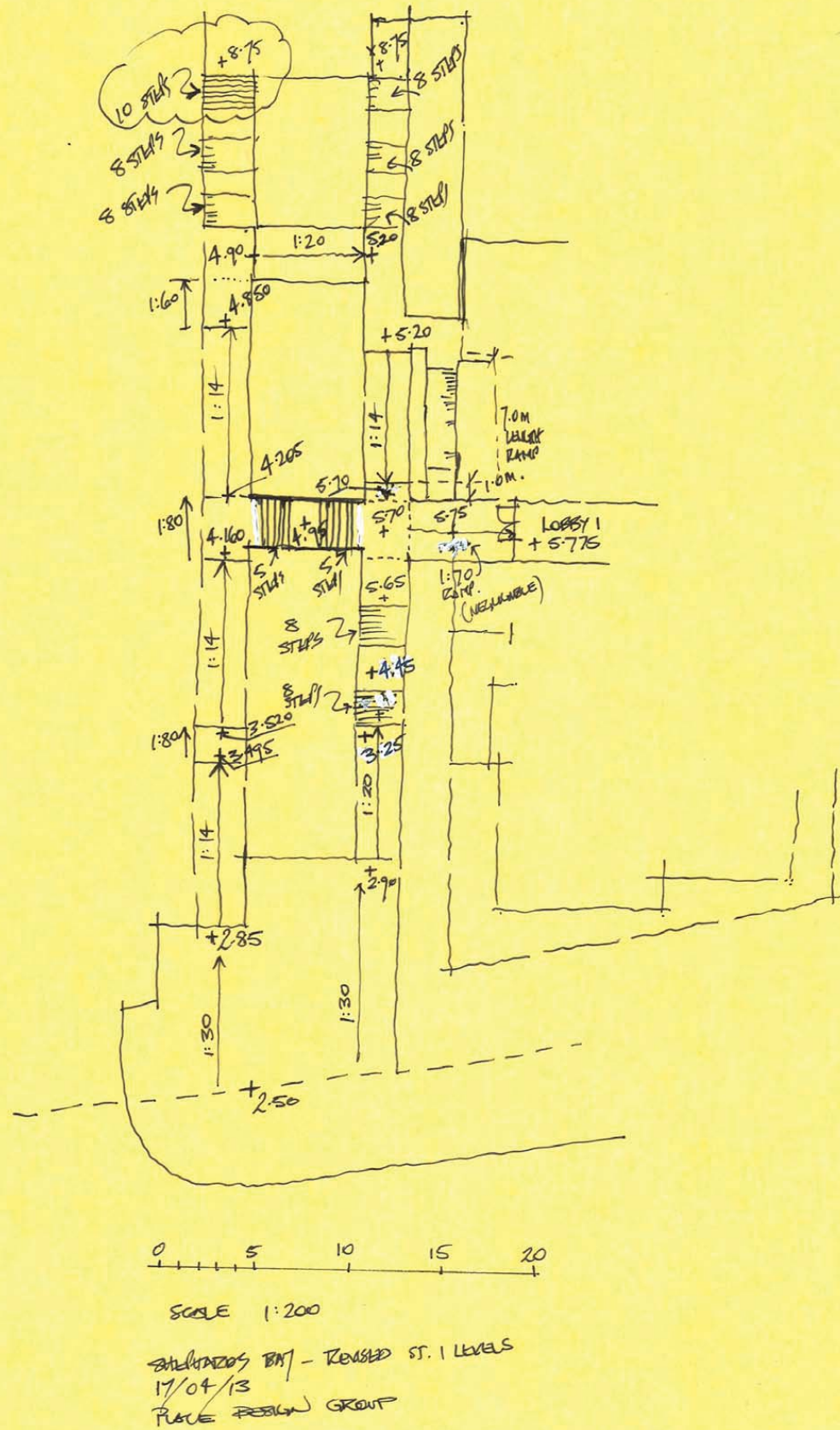




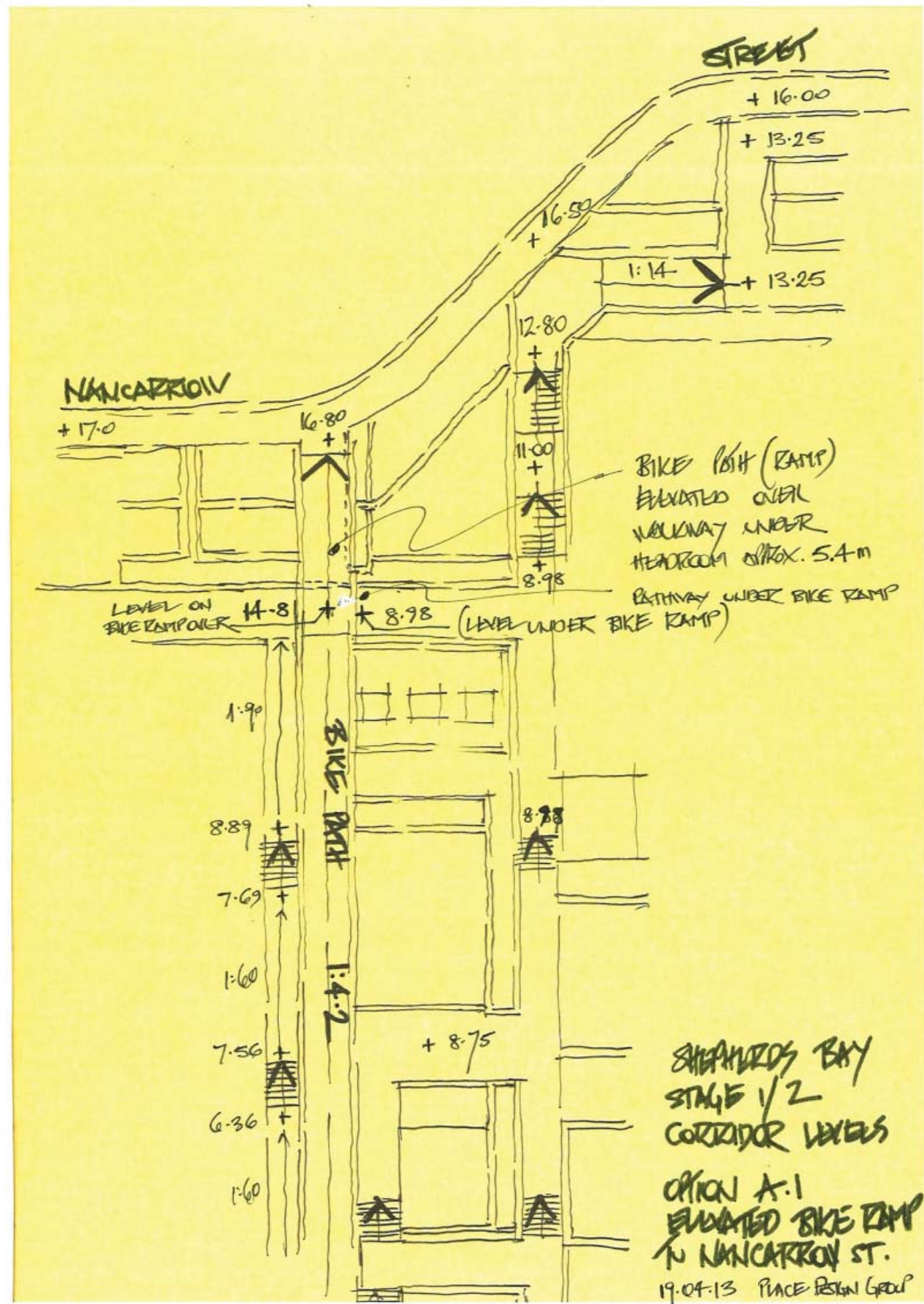
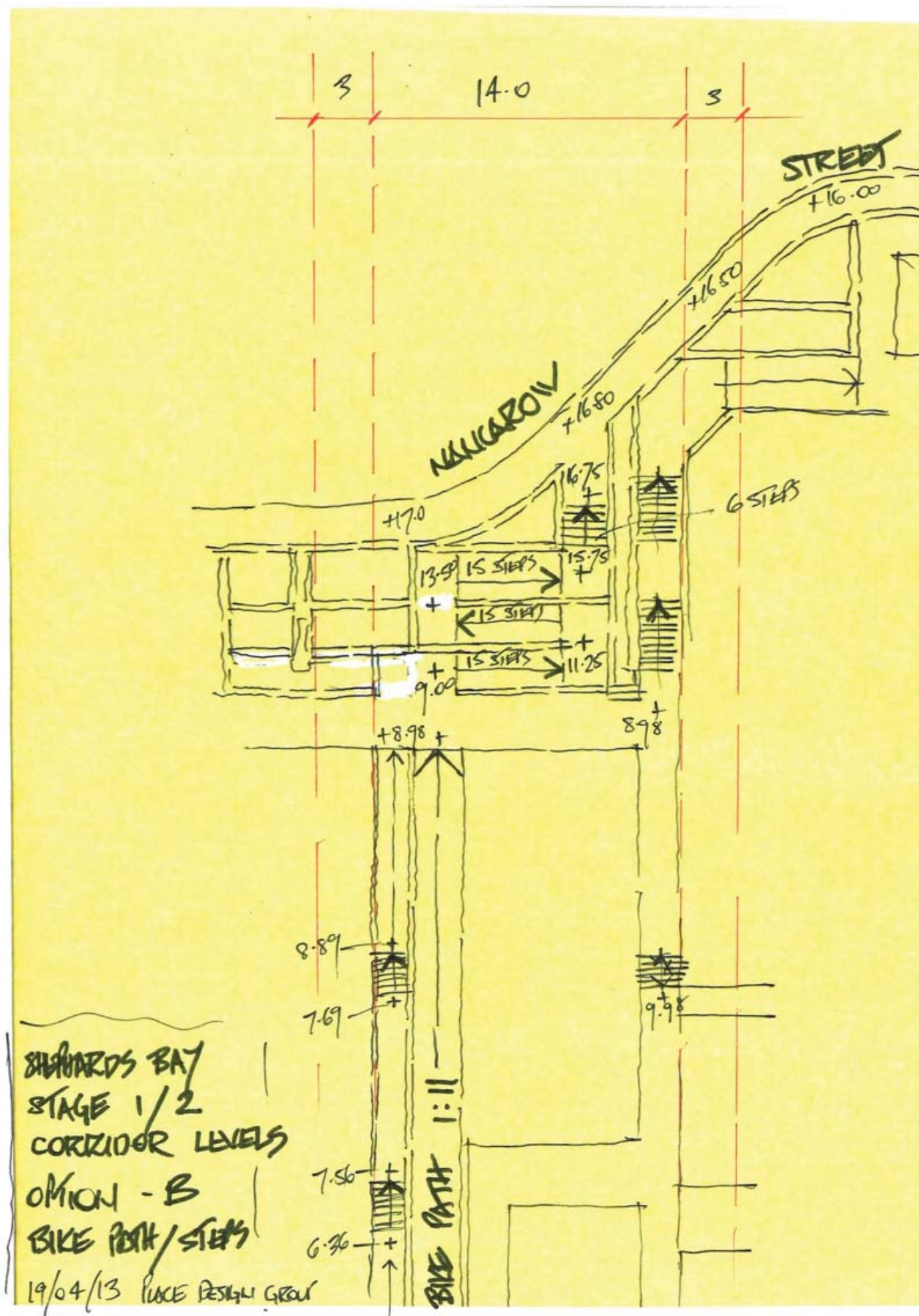


## appendices

Design options for site through link, west of stage 1. (A cycleway has been deemed inappropriate in this location)









pedestrian & cycleway routes

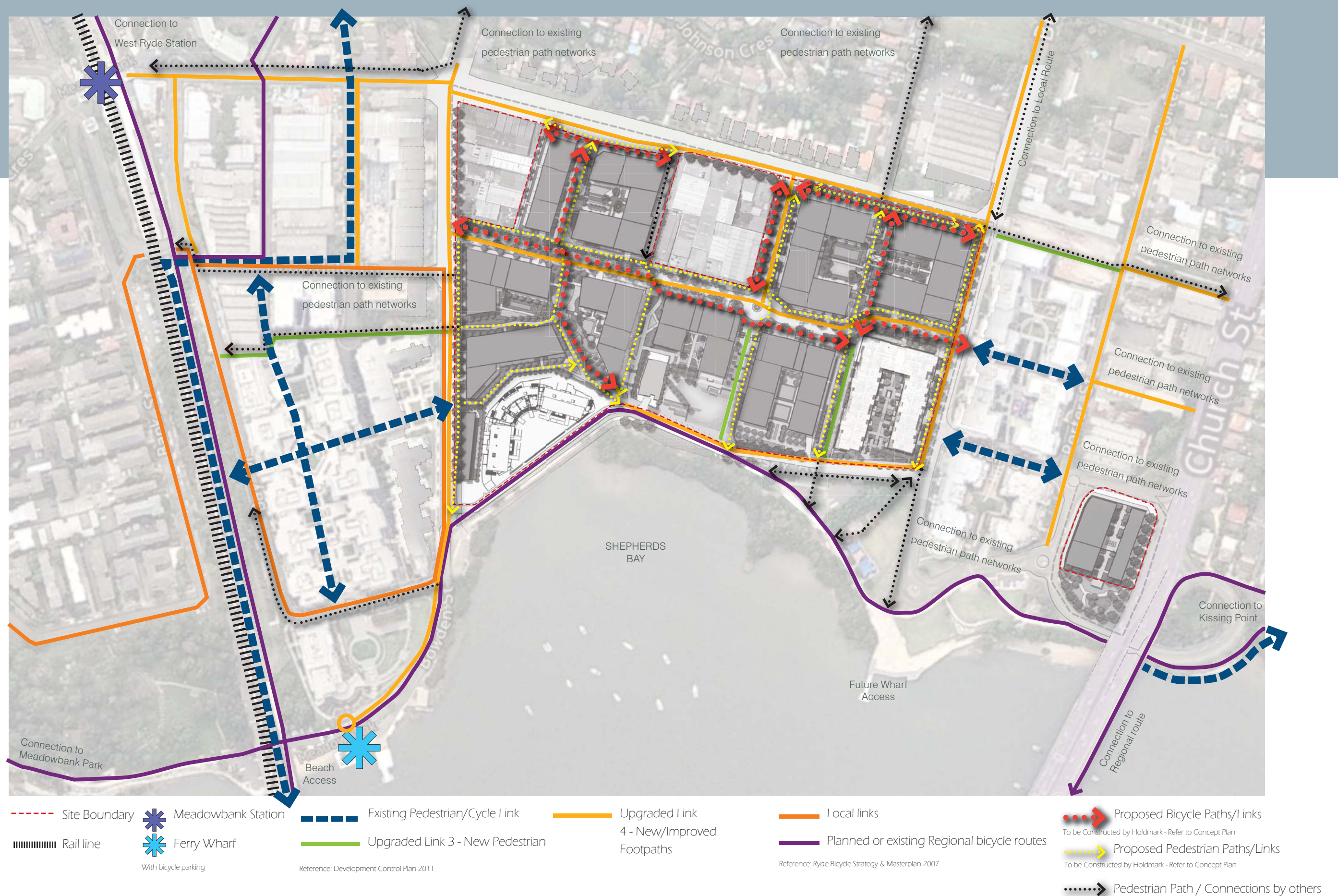
SK03 Rev B Deleted



**pedestrian & cycleway routes**



0 50  
SCALE 1:3000 @ A3





COPY RIGHT © 2013 PLACE DESIGN GROUP LTD. ALL RIGHTS RESERVED