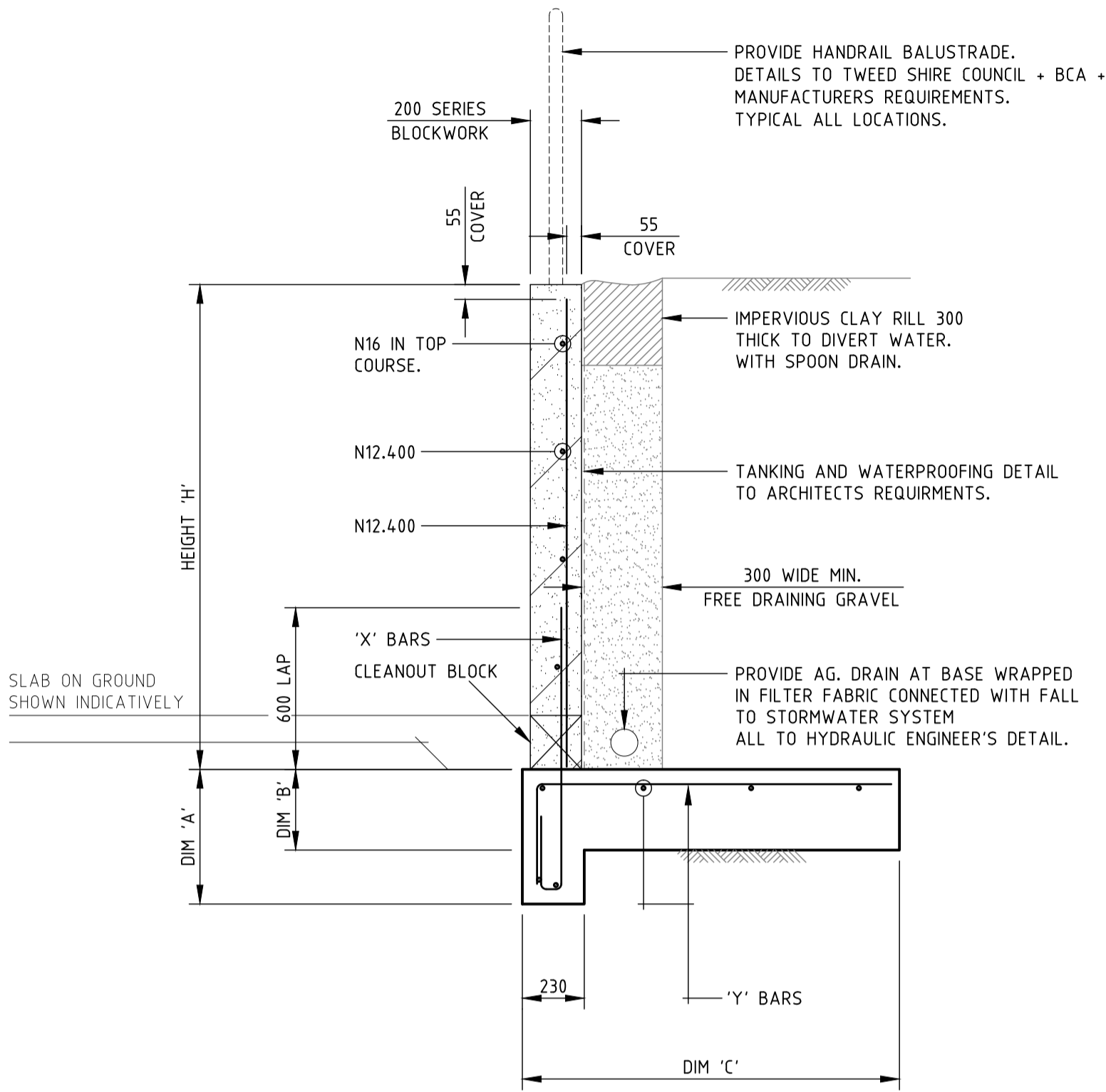


XREF'S:

WALL HEIGHT 'H'	TOE DEPTH 'A'	BASE DEPTH 'B'	BASE WIDTH 'C'	REINFORCEMENT	
				'X' BARS	'Y' BARS
1600 MAX.	550	300	1200	N16-400	N16-400
2000 MAX.	550	300	1600	N20-400	N20-400



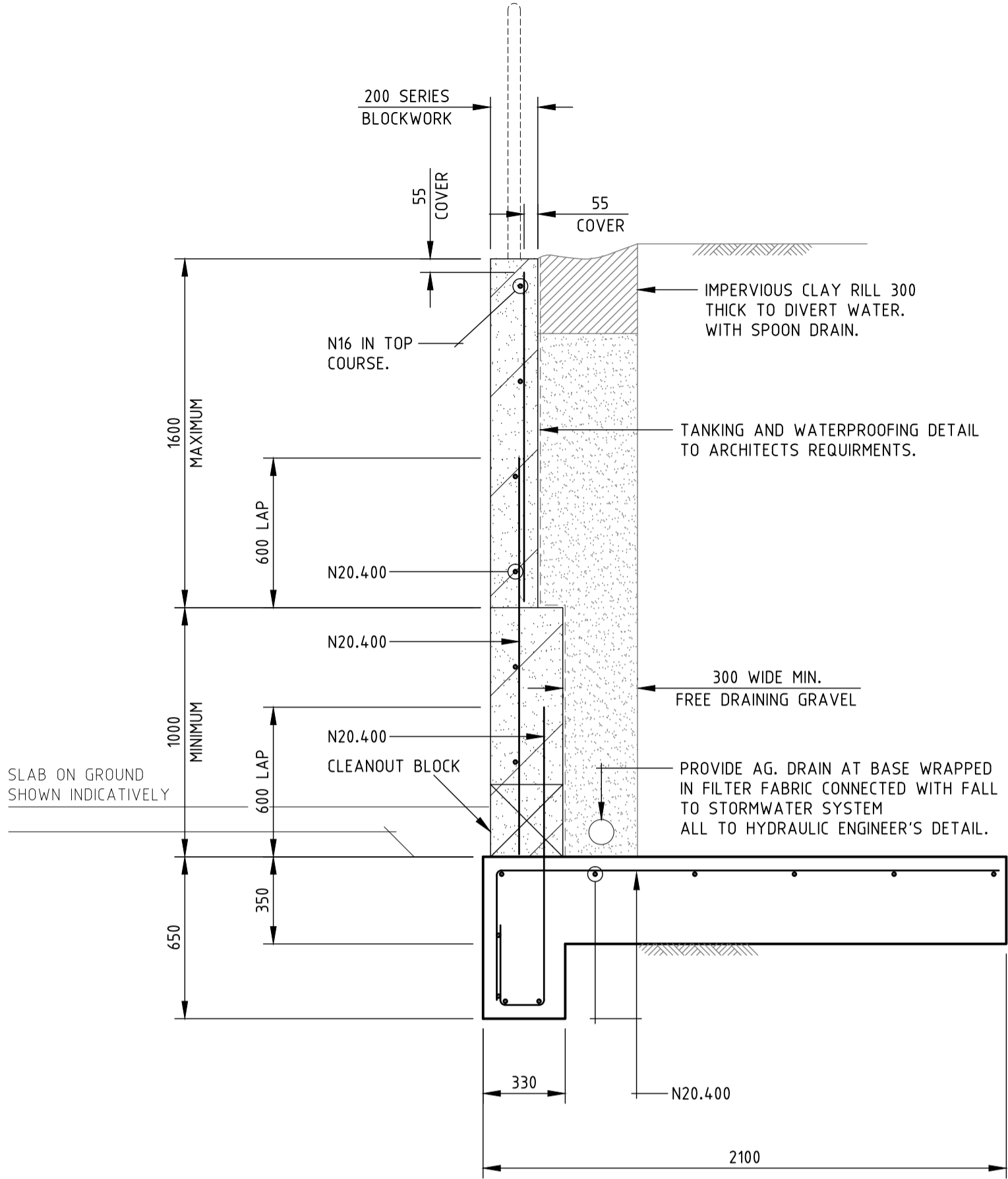
NOTES:

1. CONCRETE STRENGTH  $f'c$   
FOOTINGS = 25 MPa (55 COVER TYP, U.N.O.)  
CORE FILLING = 20 MPa (55 COVER TYP, U.N.O.)
2. BLOCK STRENGTH  $f'uc$  = 15 MPa
3. 100 kPa MIN. ALLOWABLE BEARING CAPACITY, TYPICAL.
4. CONTROL JOINTS TO BE PROVIDED AT 8000 CRS IN BLOCKWORK.

RETAINING WALL - ROAD 6

UP TO 2000 HIGH

FOR GENERAL AND CONSTRUCTION NOTES REFER TO DRAWING No. S01.



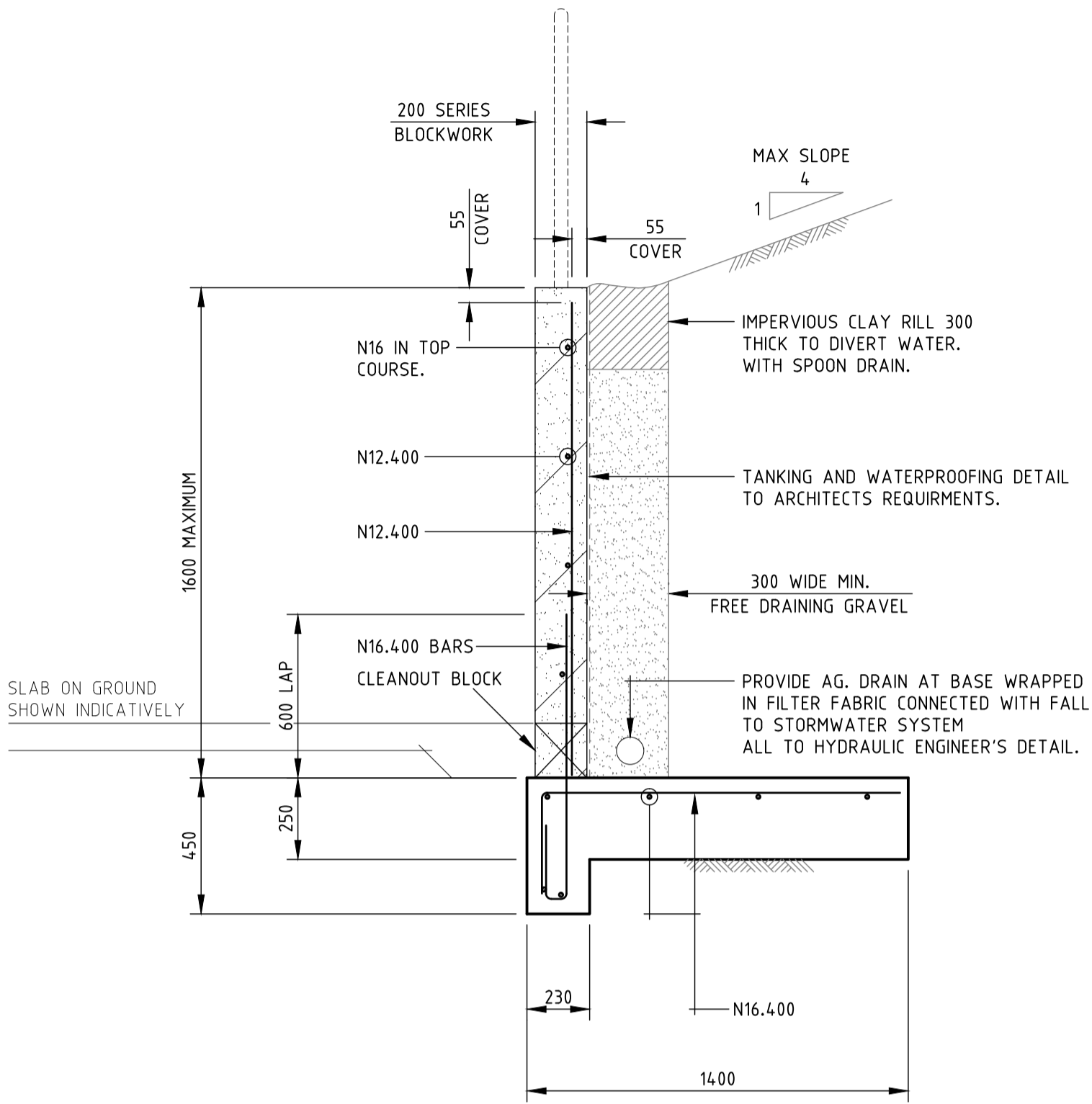
NOTES:

1. CONCRETE STRENGTH  $f'c$   
FOOTINGS = 25 MPa (55 COVER TYP, U.N.O.)  
CORE FILLING = 20 MPa (55 COVER TYP, U.N.O.)
2. BLOCK STRENGTH  $f'uc$  = 15 MPa
3. 100 kPa MIN. ALLOWABLE BEARING CAPACITY, TYPICAL.
4. CONTROL JOINTS TO BE PROVIDED AT 8000 CRS IN BLOCKWORK.

RETAINING WALL - ROAD 6

FROM 2000 TO 2600 HIGH

FOR GENERAL AND CONSTRUCTION NOTES REFER TO DRAWING No. S01.



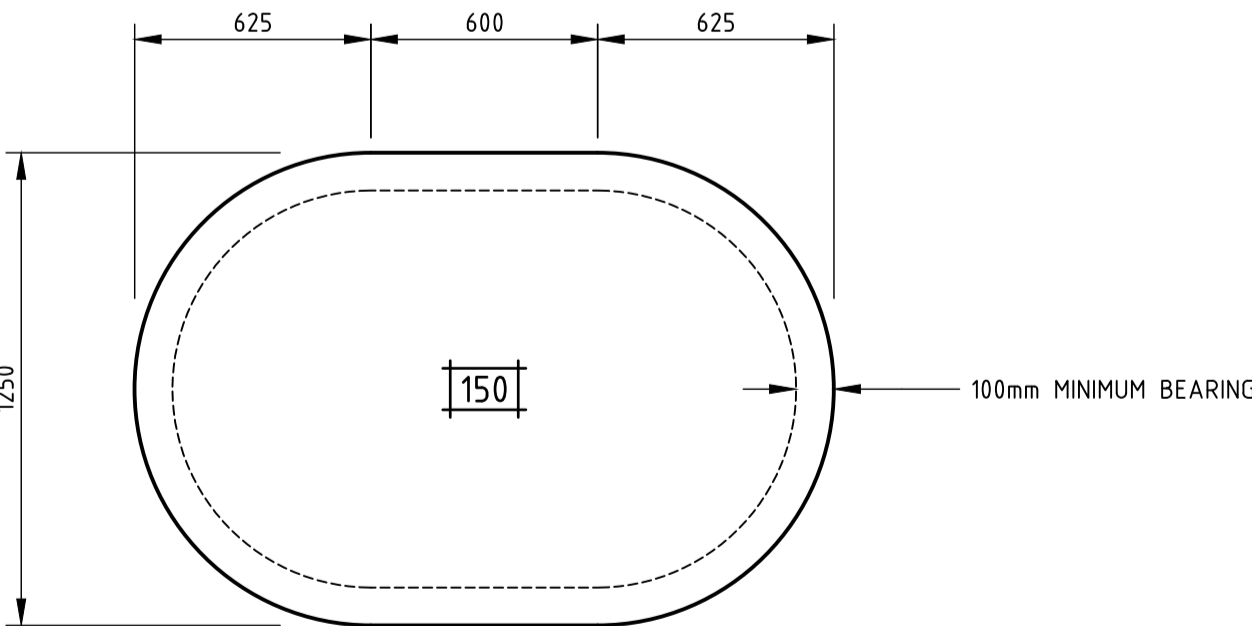
NOTES:

1. CONCRETE STRENGTH  $f'c$   
FOOTINGS = 25 MPa (55 COVER TYP, U.N.O.)  
CORE FILLING = 20 MPa (55 COVER TYP, U.N.O.)
2. BLOCK STRENGTH  $f'uc$  = 15 MPa
3. 100 kPa MIN. ALLOWABLE BEARING CAPACITY, TYPICAL.
4. CONTROL JOINTS TO BE PROVIDED AT 8000 CRS IN BLOCKWORK.

RETAINING WALL - TWEED COAST ROAD

UP TO 1600 HIGH

FOR GENERAL AND CONSTRUCTION NOTES REFER TO DRAWING No. S01.



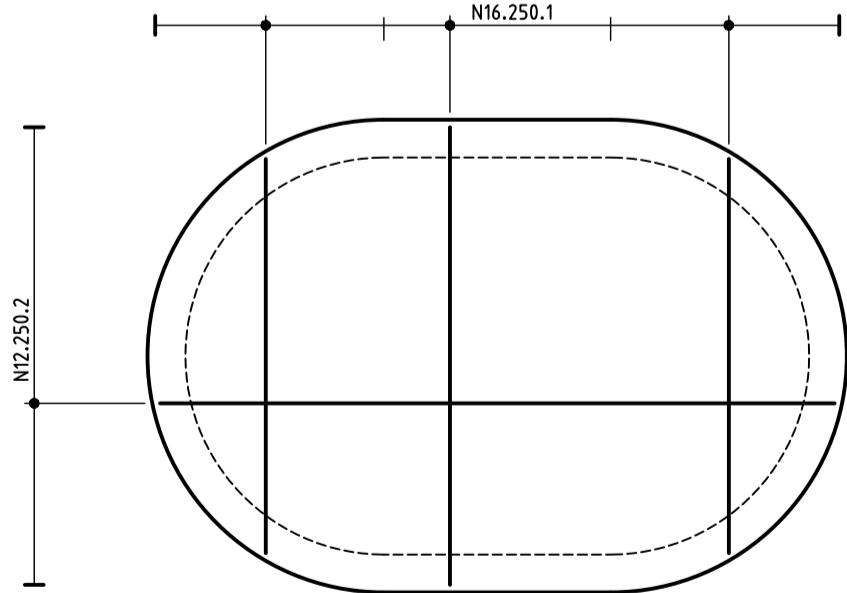
NOTES:

1. CONCRETE STRENGTH  $f'c$  32 MPa
2. CONCRETE COVER 40mm
3. ADDITIONAL REINFORCEMENT TO BE PROVIDED BY PRECAST MANUFACTURER.
4. DIMENSIONS NOTED ARE INDICATIVE ONLY.
5. CONCRETE THICKNESS NOTED ARE MINIMUM.

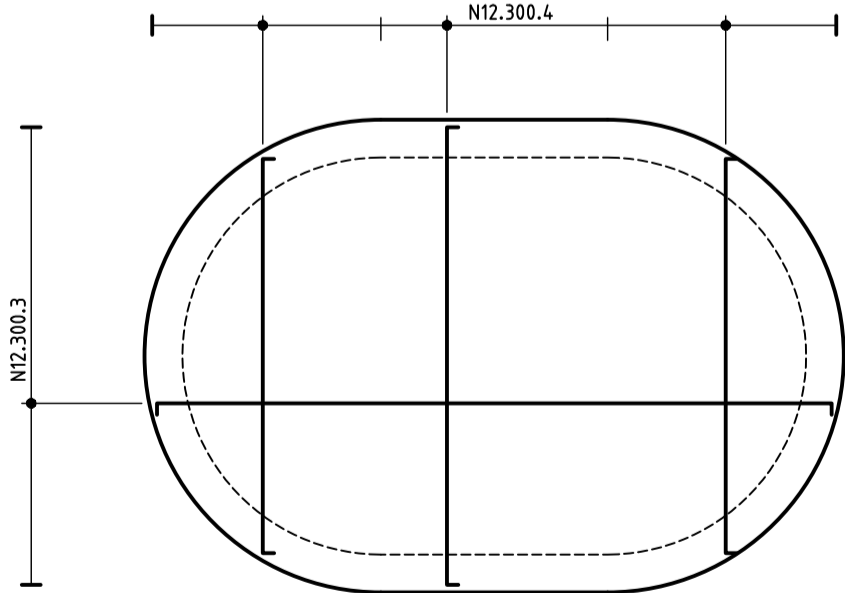
CONCRETE PLAN

TRAFFICABLE MAN HOLE COVER - MH12-1

REFER NEWTON DENNY CHAPELLE CIVIL DRAWINGS



BOTTOM REINFORCEMENT PLAN



TOP REINFORCEMENT PLAN

04	18.04.13	Issued for Approval	KOJ	BT
03	11.03.13	Issued for Building Approval	MTS	BT
02	14.12.12	PRELIMINARY - Issued for Approval	BC	BT
01	13.12.12	PRELIMINARY - Issued for Approval	BC	BT

Rev	Date	Description	By	Chk
-----	------	-------------	----	-----

The concepts and information contained in this document are the copyright of ADG Engineers (Aust) Pty Ltd. Use or copying of the document in whole or in part without the written permission of ADG Engineers (Aust) Pty Ltd constitutes an infringement of copyright. Do not scale drawings. If in doubt, ask!



**Gold Coast Office**  
Suite 201/Level 1, 1 Short Street,  
Southport, Queensland 4215  
PO Box 208, Southport, Queensland 4215  
T +617 5528 1855 F +617 5528 4723  
E info@adgce.com W www.adgce.com  
AUSTRALASIA / ASIA / EUROPE / MIDDLE EAST

Client  
NEWTON DENNY CHAPELLE

Project Name  
CASUARINA BEACH TOWN CENTRE  
ROAD 6 CULDESAC

Title  
ROAD 6 + TWEED COAST ROAD  
RETAINING WALL DETAILS

Discipline STRUCTURAL	Status APPROVAL
Designed By BT	Approved By BT
Project No. 14395	Scale at A1 1:20
Drawing No. S03	Revision 04

