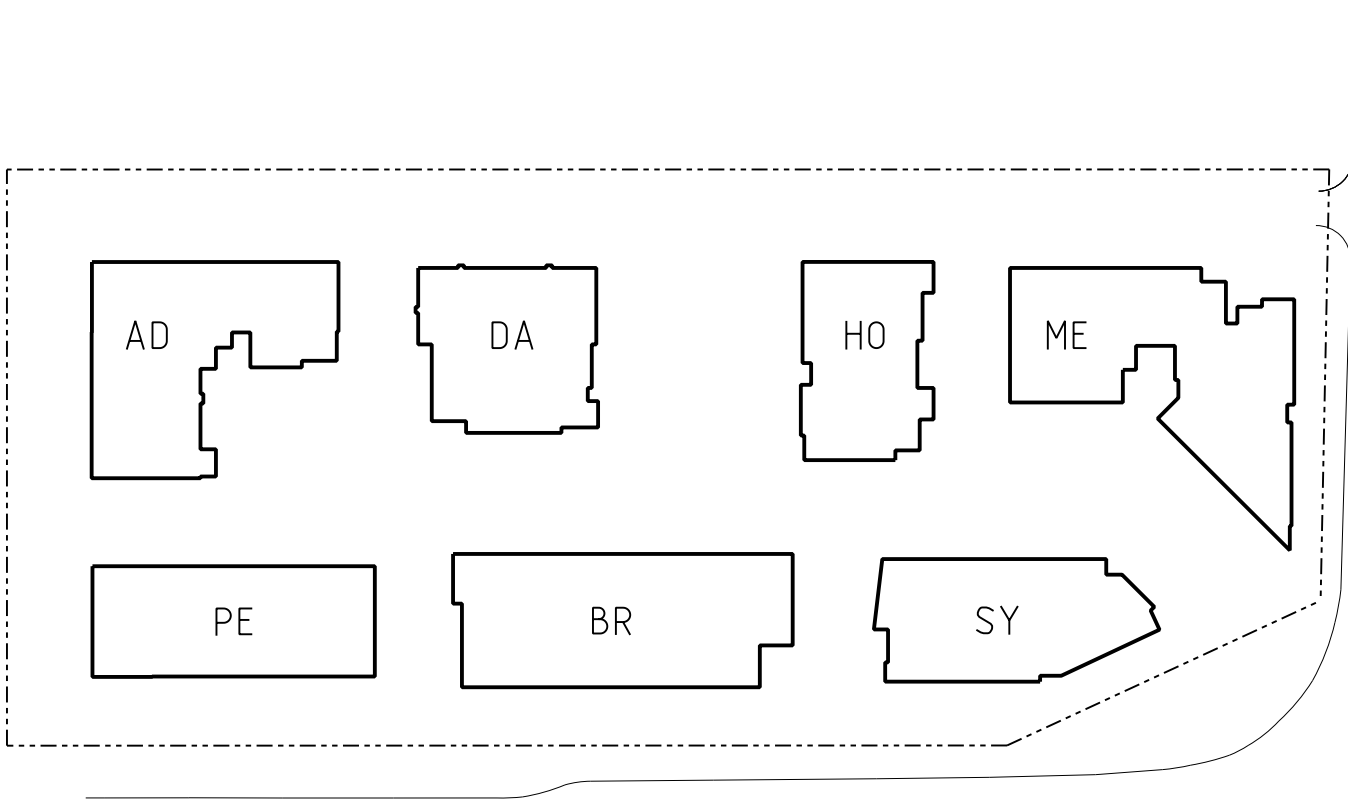




4 VIEW FROM HERRING ROAD LOOKING NORTH WEST
NTS



3 VIEW FROM EPPING ROAD LOOKING EAST
NTS



VIEW 3

VIEW 4

NOTE:
STAGE 2 BUILDINGS, SHOWN GHOSTED,
DO NOT FORM PART OF THIS SUBMISSION

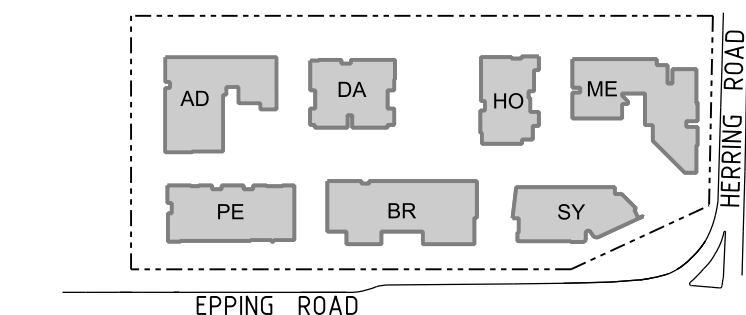
Revisions			Description	Ver	App'd
No	Date				
A	21.01.11		PART 3A SUBMISSION		
B	14.12.11		PREFERRED PROJECT		
C	24.02.12		PREFERRED PROJECT		
D	11.12.12		75W SUBMISSION		
E	18.01.13		75W SUBMISSION		
F	17.06.13		75W SUBMISSION		

Do not scale drawings. Use figured dimensions only. Check & verify levels and dimensions on site prior to the commencement of any work, the preparation of shop drawings or the fabrication of components.

This drawing is the copyright of Allen Jack + Cotter Architects and is protected under the Copyright Act 1968. Do not alter, reproduce or transmit in any form, or by any means without the express permission of Allen Jack + Cotter Architects.

Nominated Architects: Michael Heenan 5264, Peter Ireland 6661

Site Location Plan



Client



STAMFORD
LAND CORPORATION LTD

Architect

AJ+C
ALLEN JACK+COTTER

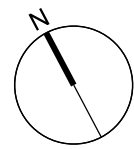
79 Myrtle Street Chippendale NSW 2008 AUSTRALIA
ph +61 2 9311 8222 fx +61 2 9311 8200 ABN 53 003 782 250

Project

MACQUARIE PARK VILLAGE

**110-114 HERRING ROAD
MACQUARIE PARK**

Proj No. **10_030**



Drawing Title

VIEWS SHEET 2

Drawing Status

NOT FOR CONSTRUCTION

Scale

NTS

Drawing No

DA3631

Issue

F