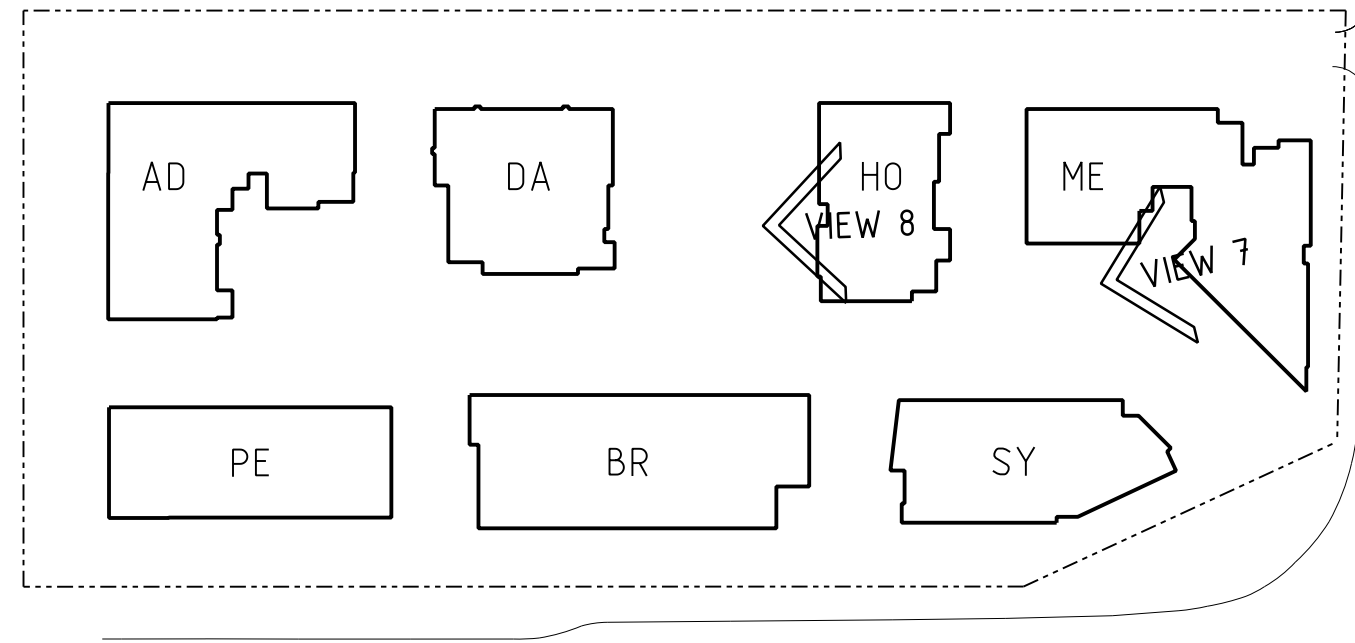




8 VIEW OVER POOL GARDEN LOOKING NORTH WEST  
NTS



8 INTERNAL VIEW LOOKING WEST  
NTS



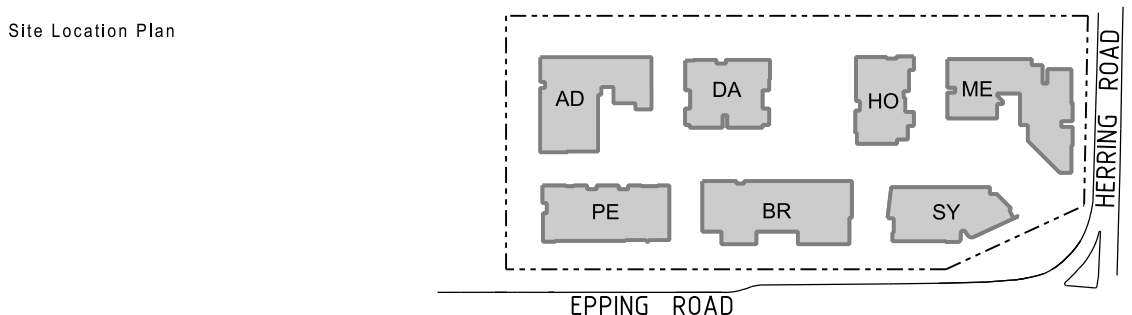
NOTE:  
STAGE 2 BUILDINGS, SHOWN GHOSTED,  
DO NOT FORM PART OF THIS SUBMISSION

Revisions			Ver	App'd
No	Date	Description		
A	21.01.11	PART 3A SUBMISSION		
B	14.12.11	PREFERRED PROJECT		
C	24.02.12	PREFERRED PROJECT		
D	11.12.12	75W SUBMISSION		
E	18.01.13	75W SUBMISSION		
F	17.06.13	75W SUBMISSION		

Do not scale drawings. Use figured dimensions only. Check & verify levels and dimensions on site prior to the commencement of any work, the preparation of shop drawings or the fabrication of components.

This drawing is the copyright of Allen Jack + Cotter Architects and is protected under the Copyright Act 1968. Do not alter, reproduce or transmit in any form, or by any means without the express permission of Allen Jack + Cotter Architects.

Nominated Architects: Michael Heenan 5264, Peter Ireland 6661



Client

**STAMFORD**  
LAND CORPORATION LTD

Architect

**AJ+C**  
ALLEN JACK + COTTER  
79 Myrtle Street Chippendale NSW 2008 AUSTRALIA  
ph +61 2 9311 8222 fx +61 2 9311 8200 ABN 53 003 782 250

Project

**MACQUARIE PARK VILLAGE**  
110-114 HERRING ROAD  
MACQUARIE PARK

Proj No. **10\_030**

Drawing Title	Scale	Drawing No	Issue
<b>VIEWS SHEET 4</b>	<b>NTS</b>	<b>DA3633</b>	<b>F</b>
Drawing Status			
<b>NOT FOR CONSTRUCTION</b>			