

CPV3 - INDICATIVE DESIGN SCHEME UNIT MIX & CAR PARKING ALLOCATIONS

LEVEL	BUILDING	UNIT MIX								TOTAL
		3 Beds	2B + 2b	2B +1b	2B Loft	1B	1B Flexi	1B adapt	2B adapt	
Ground	2B Soho	0	0	0	20	0	0	0	0	
Mezzanine	5	0	2	0	0	0	0	0	0	
Level 1	1	0	5	1	0	1	0	1	0	
	2	0	4	2	0	3	1	0	1	
	3	2	4	0	0	3	0	0	0	
	4	1	8	0	0	0	1	2	2	
	5	0	10	6	0	0	0	0	0	
Level 2	1	0	5	1	0	1	0	1	0	
	2	0	4	2	0	3	1	0	1	
	3	2	4	0	0	3	0	0	0	
	4	1	8	0	0	0	1	2	2	
	5	0	10	6	0	0	0	0	0	
Level 3	1	0	7	1	0	2	0	1	0	
	2	0	4	2	0	3	1	0	1	
	3	2	4	0	0	3	0	0	0	
	4	1	8	0	0	0	1	2	2	
	5	0	10	6	0	0	0	0	0	
Level 4	3	2	4	0	0	3	0	0	0	
	4	1	8	0	0	0	1	2	2	
	5	0	5	6	0	0	0	0	0	
Level 5	4	1	8	0	0	0	1	2	2	
	5	0	5	6	0	0	0	0	0	
TOTAL		13	127	39	20	25	8	13	13	258 Units
Unit mix		5%	49%	15%	8%	10%	3%	5%	5%	100%
Car/ Unit rate		2	1.2	1	1.2	1	1	1.5	1.5	
No of Cars		26	153	39	24	25	8	19	19	313 + 52 Visitor car parking spaces

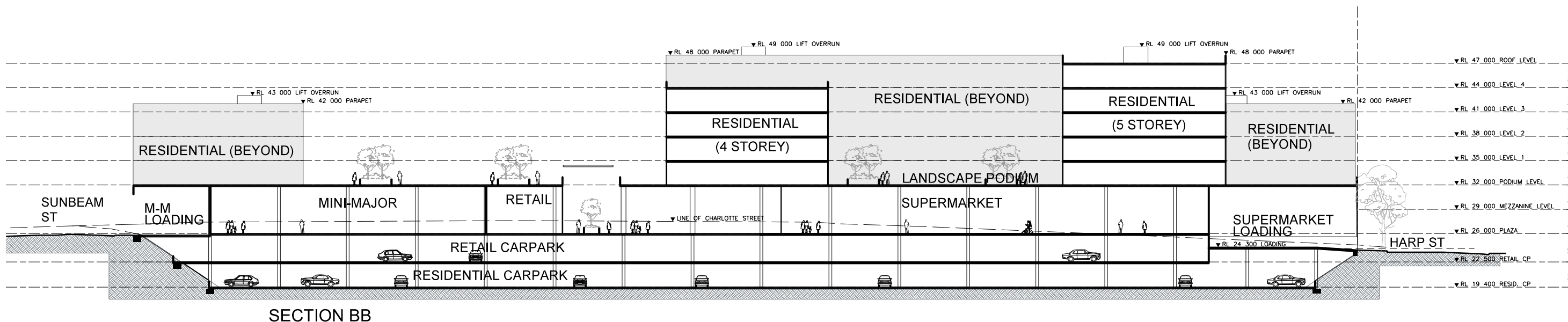
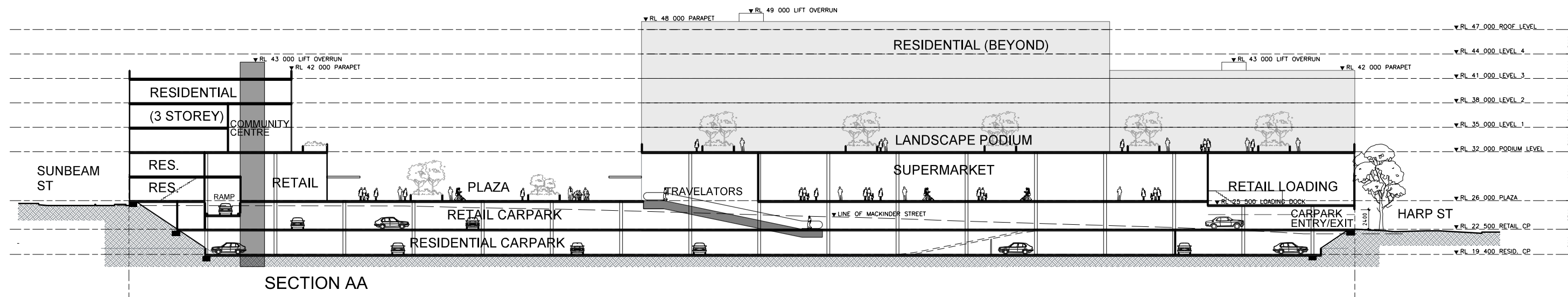
CPV3 - INDICATIVE DESIGN SCHEME CROSS VENTILATION & SOLAR ACCESS PERFORMANCE

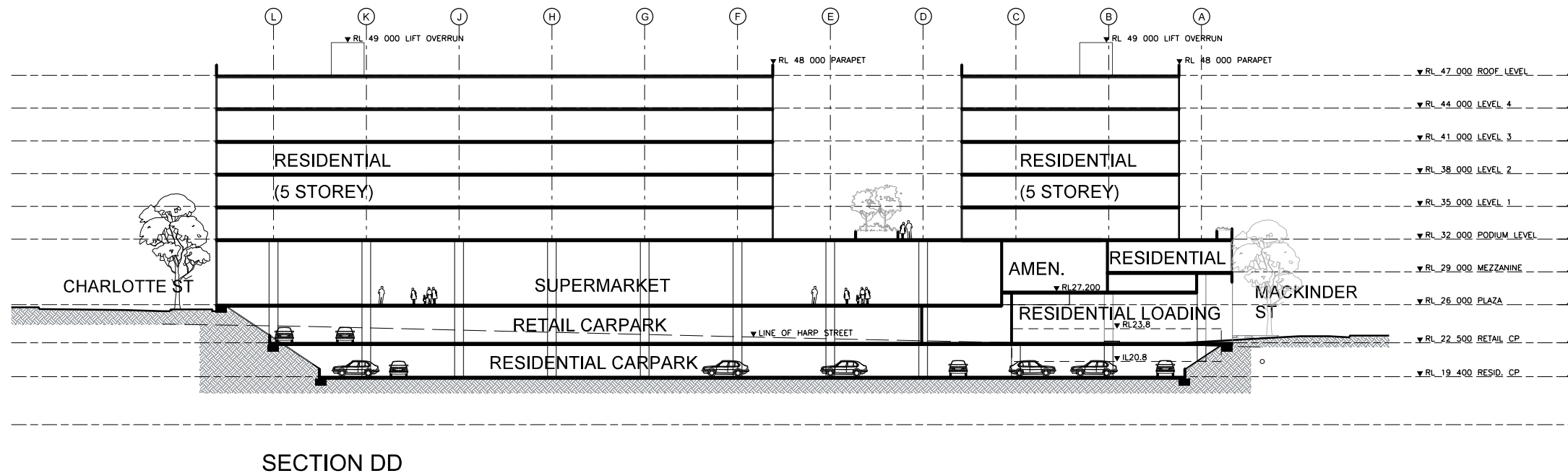
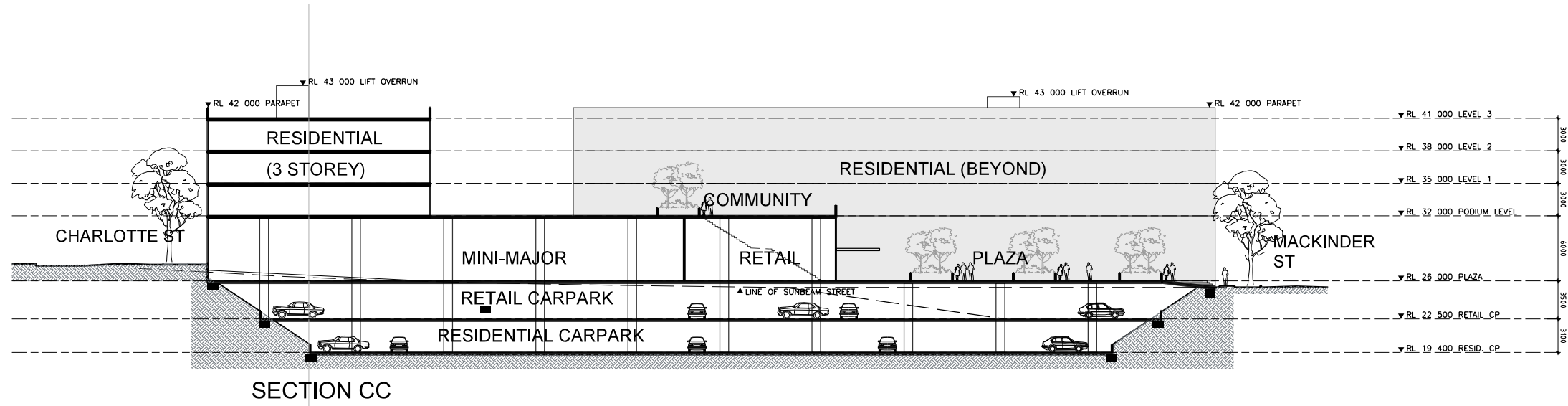
TOTAL NUMBER OF UNITS: 258

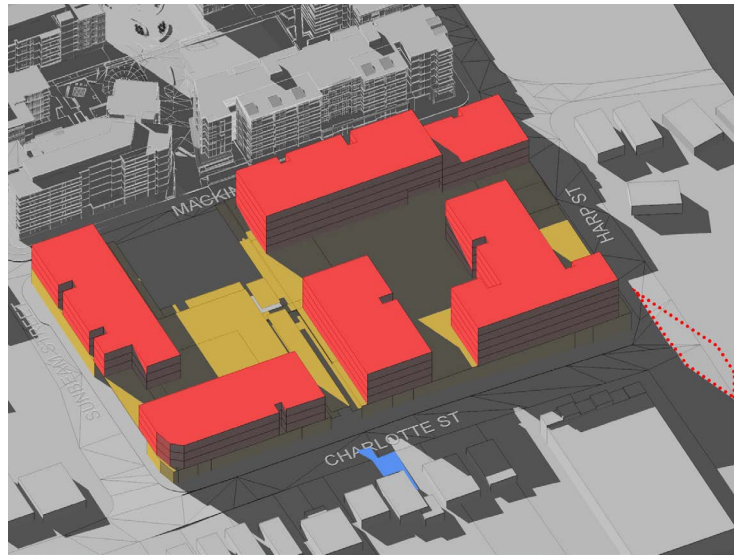
LEVEL	BUILDING NO.	CROSS VENTILATION	SUNLIGHT ACCESS				
			2 Hours	2 Hours with Skylight	2 Hours part outside 3pm	South facing/ single-aspect units	South facing & no cross vent
Ground	Terraces	20	17	0	0	0	0
Mezzanine	5	0	2	0	0	0	0
Level 1	1	7	7	0	0	1	1
	2	5	7	0	4	0	0
	3	6	5	0	1	3	1
	4	7	8	0	3	3	3
	5	10	9	0	7	0	0
Level 2	1	7	7	0	0	1	1
	2	5	7	0	4	0	0
	3	6	5	0	1	3	1
	4	7	8	0	3	3	3
	5	10	9	0	7	0	0
Level 3	1	9	7	4	0	0	0
	2	5	7	4	0	0	0
	3	6	5	0	1	3	1
	4	7	8	0	3	3	3
	5	10	9	0	7	0	0
Level 4	3	6	5	4	0	0	0
	4	7	8	0	3	3	3
	5	7	6	0	5	0	0
Level 5	4	7	8	6	0	0	0
	5	7	6	5	0	0	0
Totals		161	160	23	49	23	17
Percentage		62%	62%	9%	19%	9%	7%

SUMMARY

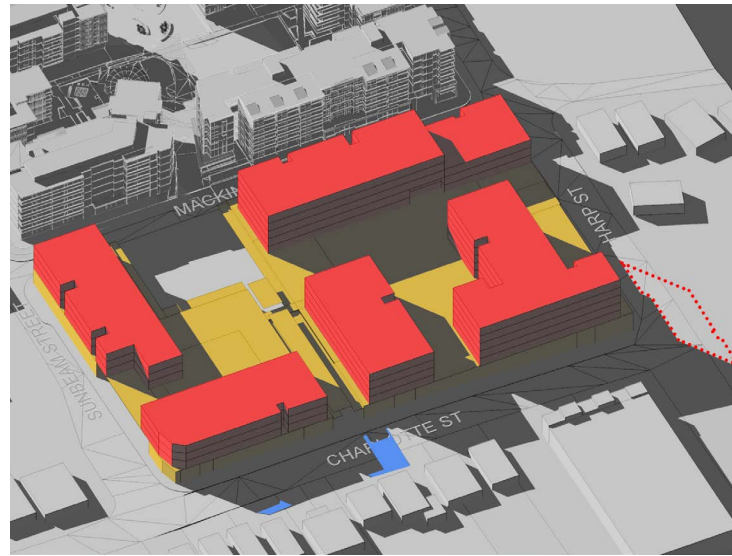
- 62% of Units can be naturally cross ventilated.
- 71% of Units can achieve the minimum 2 hours of direct sunlight between the hours of 9am - 3pm mid winter.
- 9% of Units are south facing/ single aspect, of which;
- 7% will not receive direct sunlight and not have the ability to be cross ventilated.



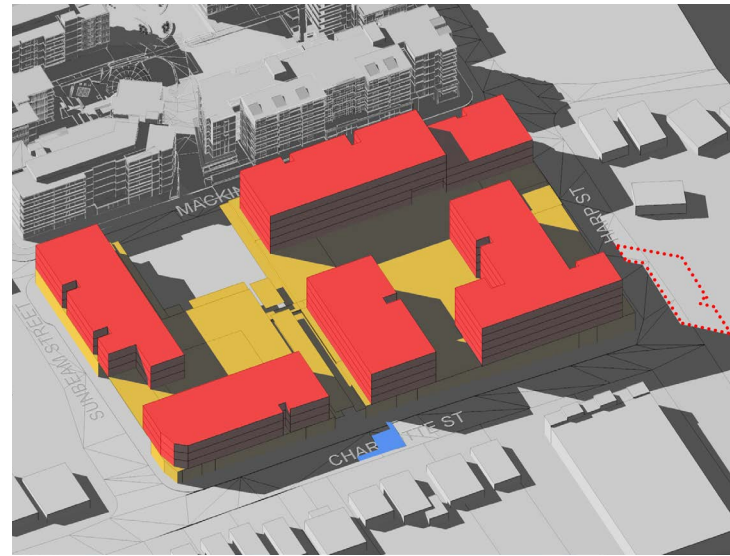




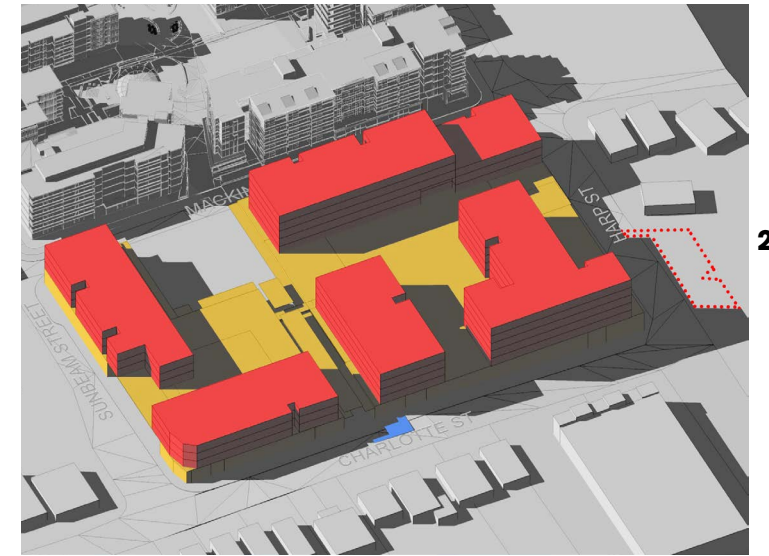
9.00am



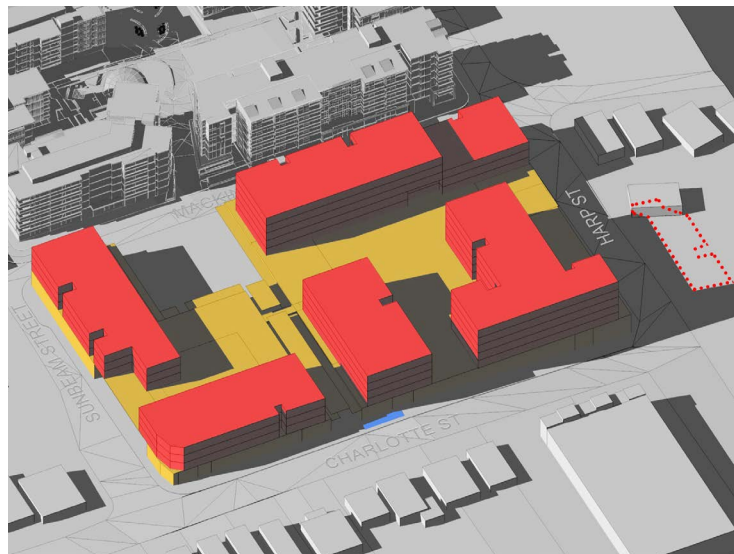
10.00am



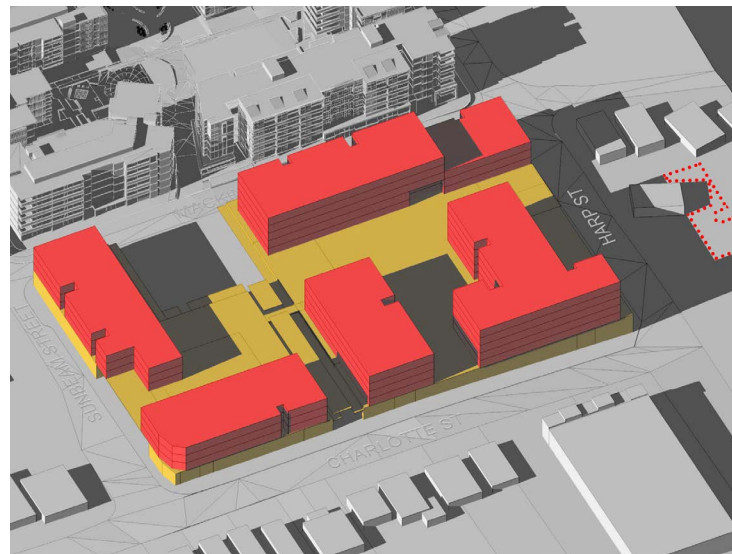
11.00am



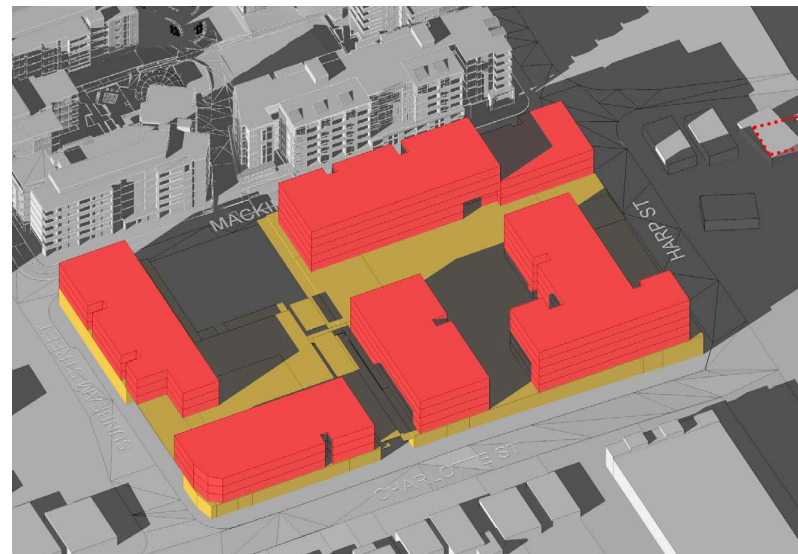
12.00pm



1.00pm



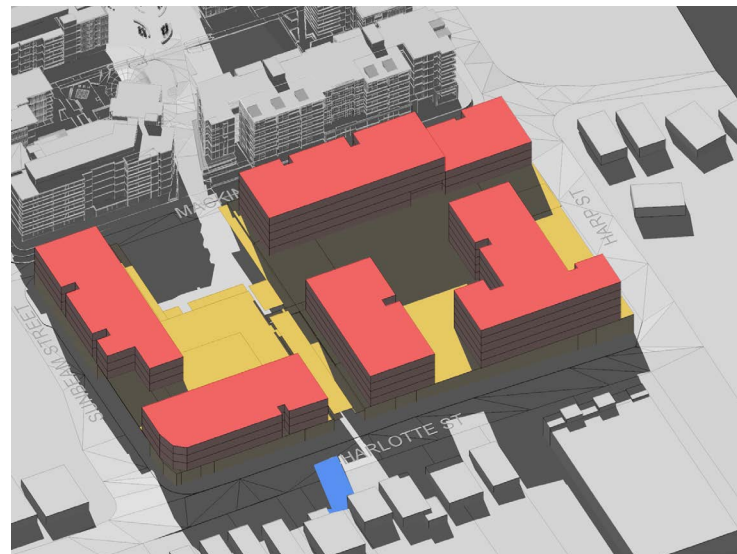
2.00pm



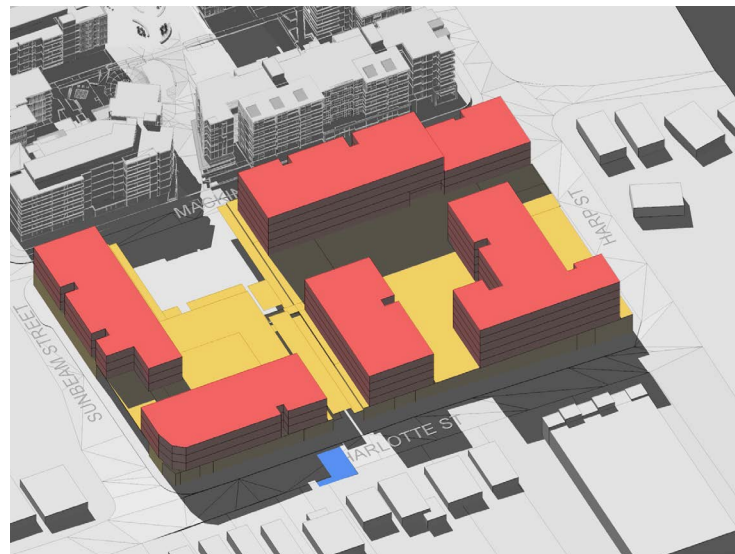
3.00pm

- ADDITIONAL SHADOW GENERATED BY AMENDED PROPOSED INDICATIVE DESIGN SCHEME ENVELOPES
- SHADOW REDUCTION GENERATED BY AMENDED PROPOSED INDICATIVE DESIGN SCHEME ENVELOPES

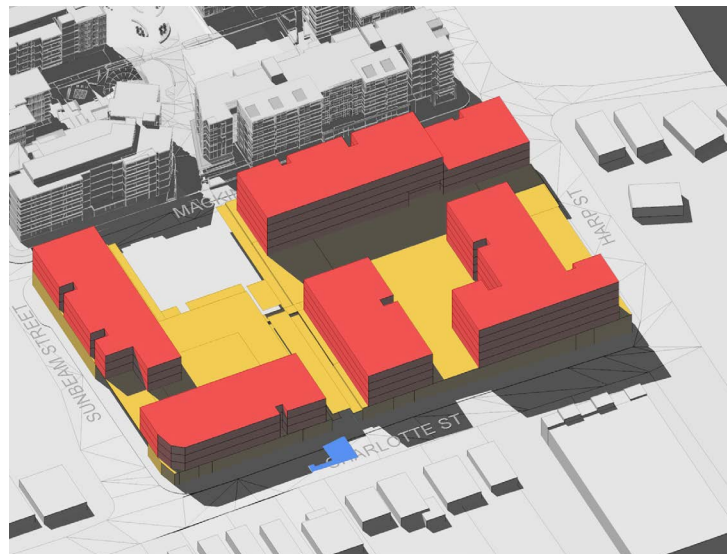
21ST JUNE



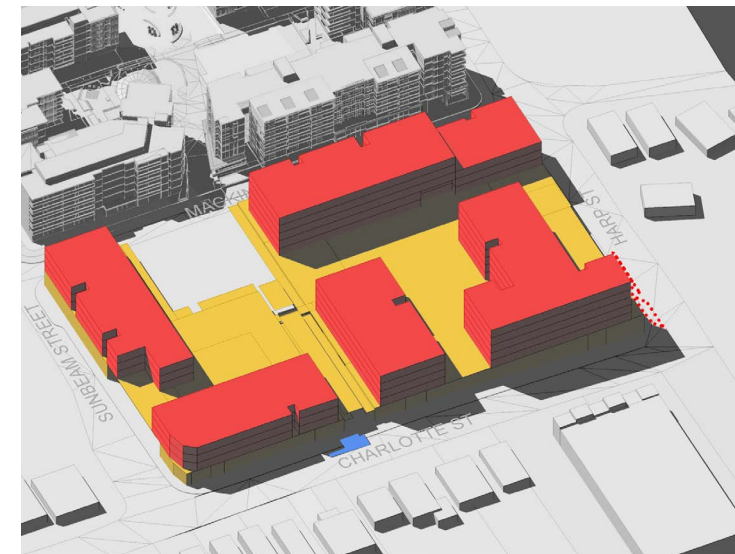
9.00am



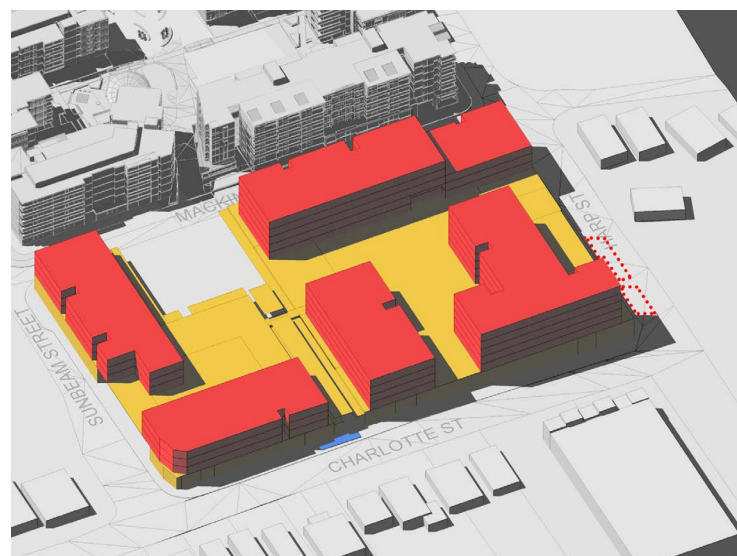
10.00am



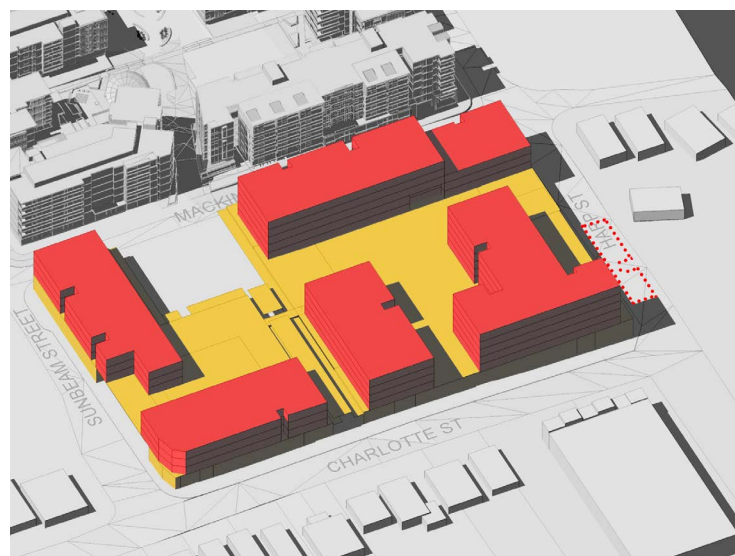
11.00am



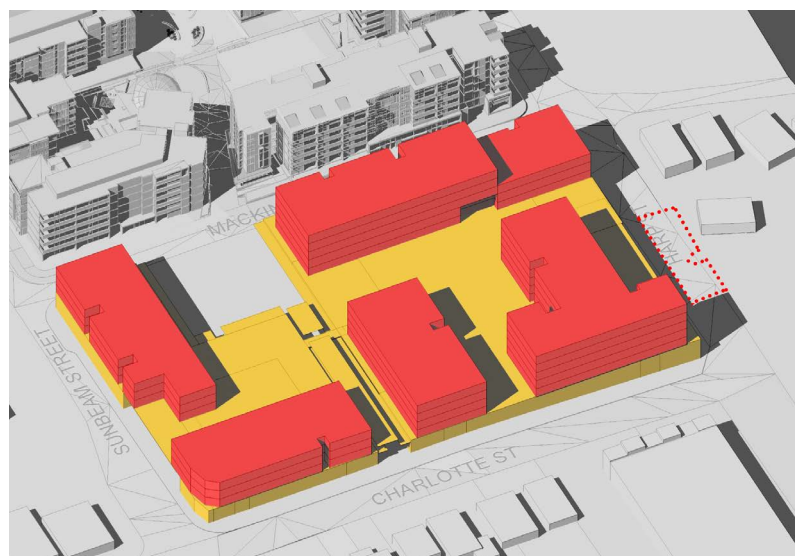
12.00pm



1.00pm



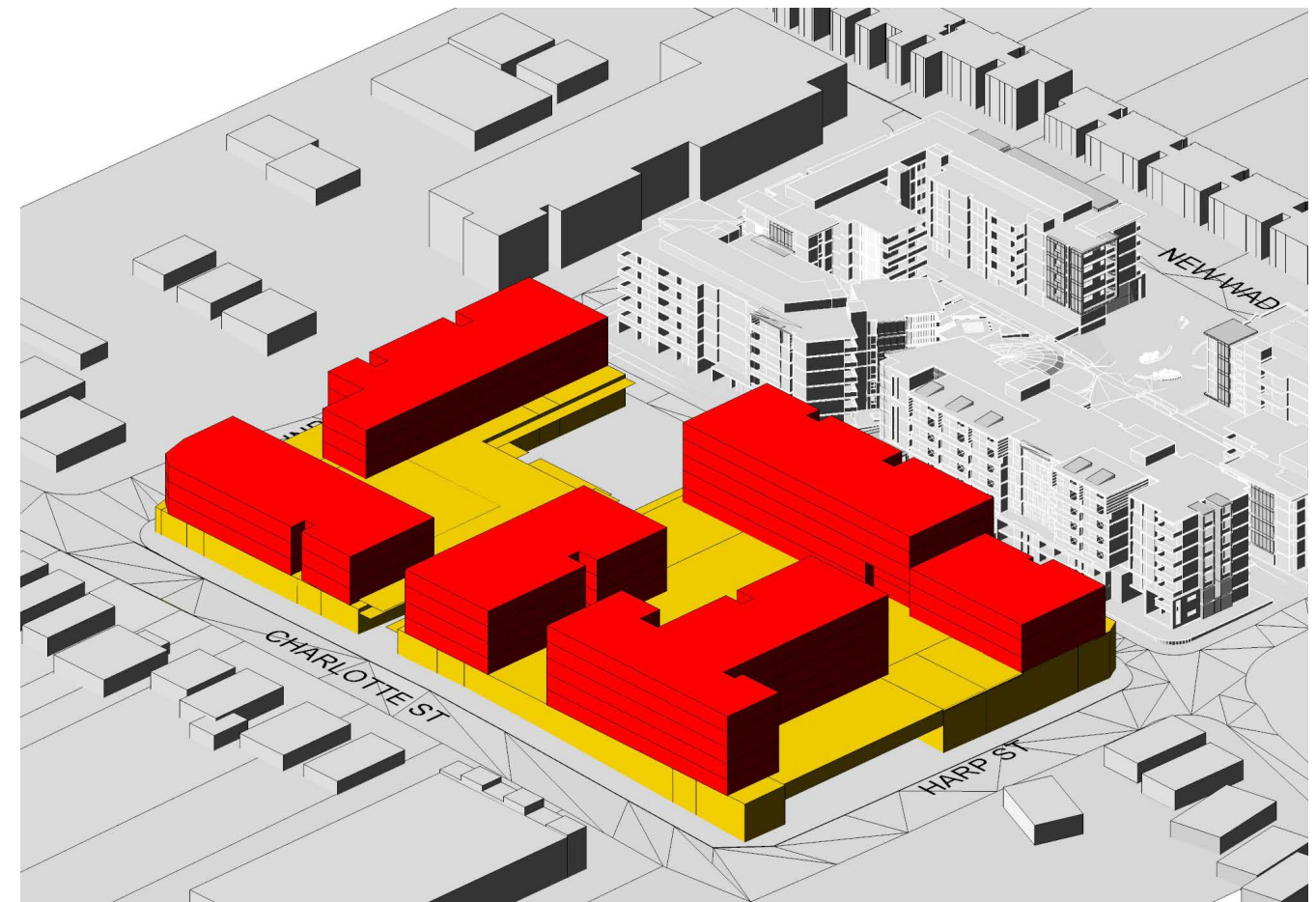
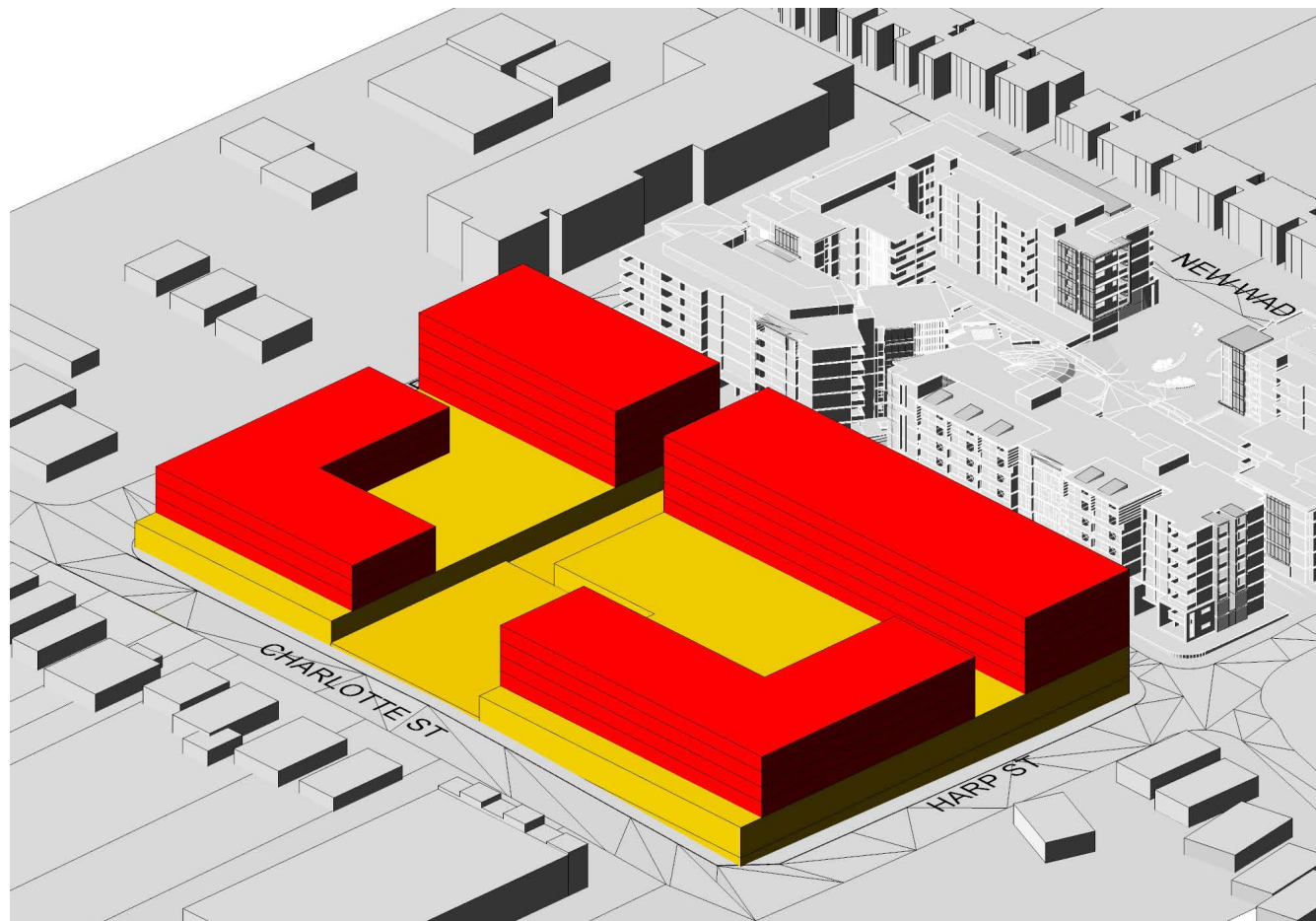
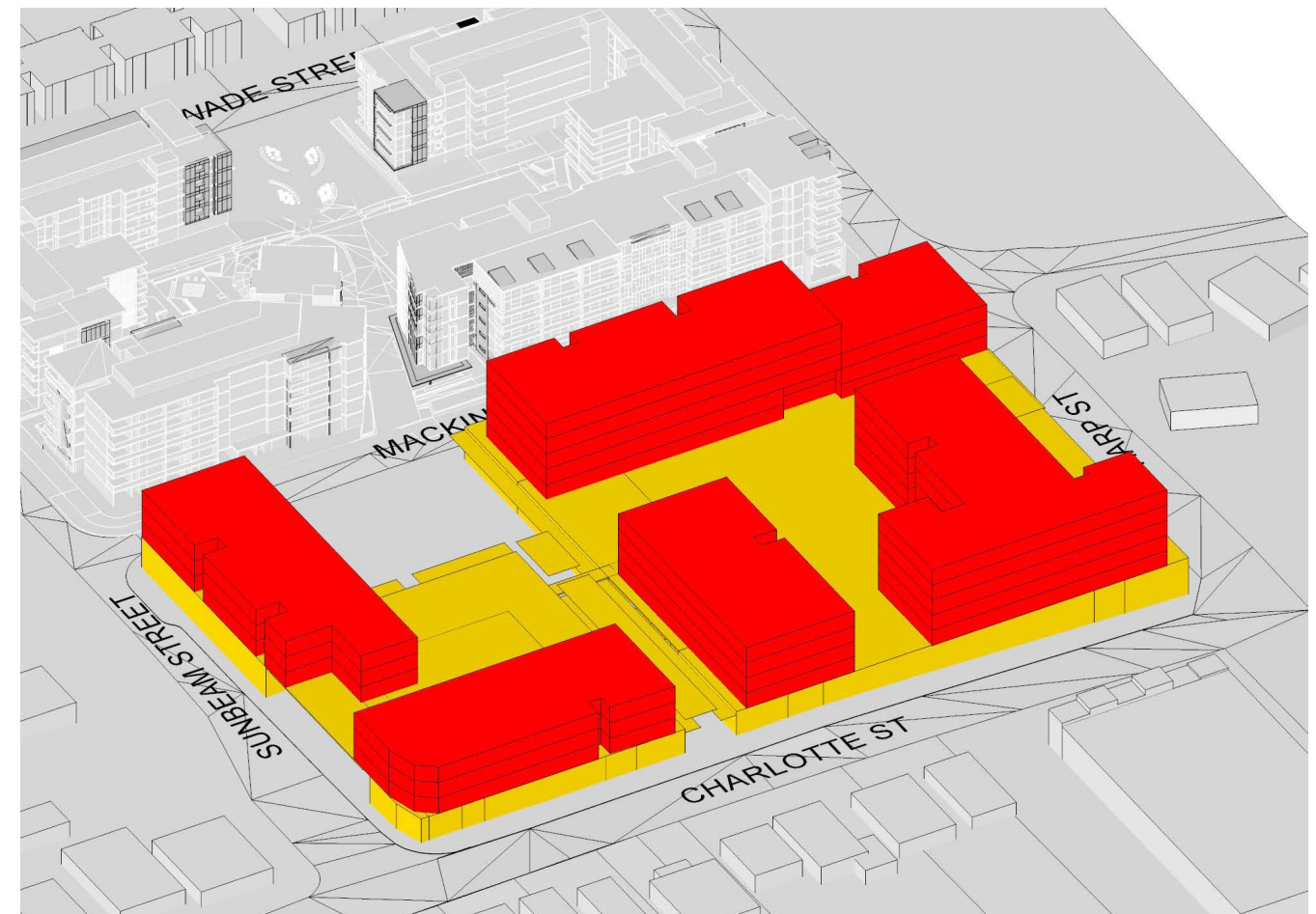
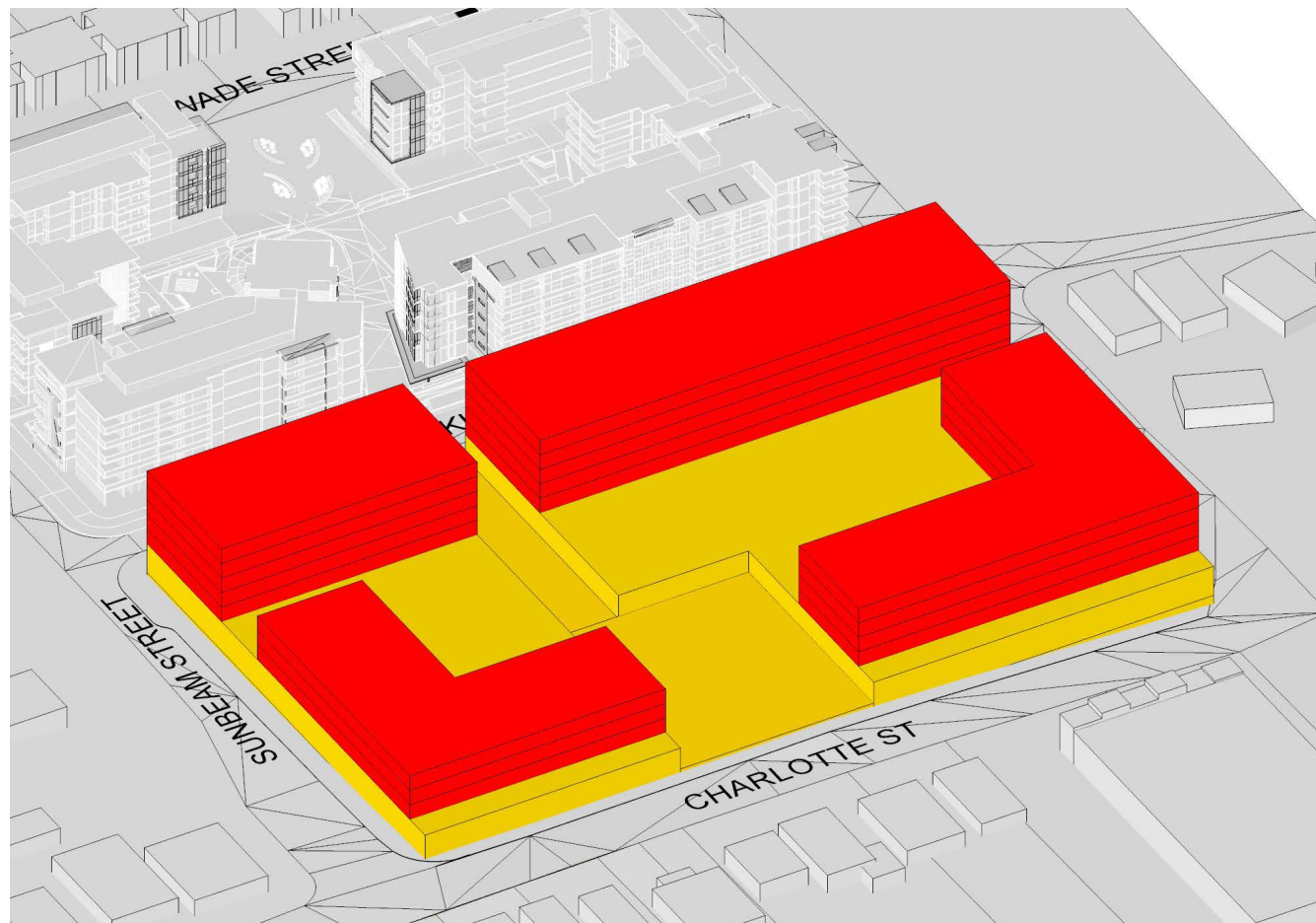
2.00pm



3.00pm

- ADDITIONAL SHADOW GENERATED BY AMENDED PROPOSED INDICATIVE DESIGN SCHEME ENVELOPES
- SHADOW REDUCTION GENERATED BY AMENDED PROPOSED INDICATIVE DESIGN SCHEME ENVELOPES

21ST MARCH/ SEPTEMBER



APPROVED ENVELOPE

PROPOSED ENVELOPE

