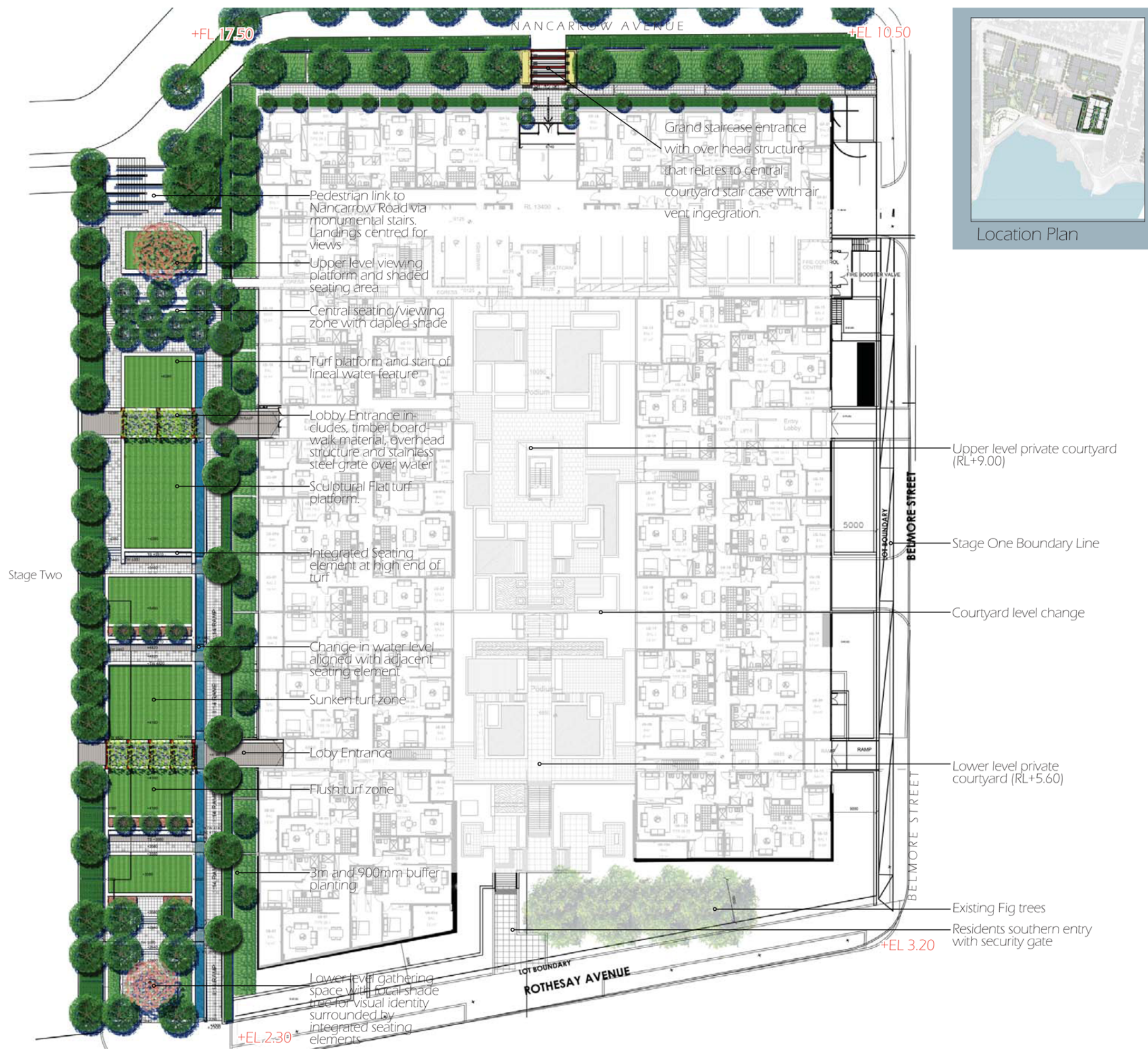


stage one - 75w revised foreshore link



design intent

Stage One will be maintained and managed by the body corporate, the space is one of high quality with a design style that is intended to work seamlessly with the architecture. This high quality will be reflected in the choice of hardscape material, furniture palette and the size and condition of the planted material. External spaces will be of similar character, whilst catering for greater usage. Please see Stage One Project Application report for details on individual areas.



Location Plan

Principles

- Sculptural terraced open lawn layers provide expansive views and achieve an un cluttered feeling within a narrow space.
- Structured planting and specimen shade trees frame spaces
- Open lawn platforms provide areas for relaxation
- Integrated seating elements at level changes provide numerous seating options with views.
- Lineal water body provides visual connection through length of park
- Small cascade of water falls aligned with every ramp landing and lightweight grate for walking over/access
- Monumental visual steps directly link pedestrians from park to Nancarrow Road
- Overhead structures and change in ground materials for entrance lobbies
- Ample shade seating / gathering points at each end

