



In accepting and utilising this document the recipient agrees that SJB Architects (NSW) Pty. Ltd. A/CN 081 094 724 T/A SJB Architects, retain all common law, statutory law and other rights including copyright and intellectual property rights. The recipient agrees not to use this document for any purpose other than its intended use, to waive all claims against SJB Architects resulting from unauthorised changes; or to reuse the document on other projects without the prior written consent of SJB Architects. Under no circumstances shall transfer of this document be deemed a sale. SJB Architects makes no warranties of fitness for any purpose.

The Builder/Contractor shall verify job dimensions prior to any work commencing. Use figured dimensions only. Do not scale drawings.

Nominated Architects Adam Haddow 7188 John Pradel 7004

FOR APPROVAL

Rev.	Date	Revision	By	Chk.
00	19.12.12	Preliminary Issue	ML	AH
01	09.01.13	Consultant Issue	ML	AH
02	11.01.13	Consultant Issue	ML	AH
03	14.01.13	Consultant Issue	ML	AH
04	18.01.13	Consultant Issue	ML	AH
05	24.01.13	Consultant Issue	ML	AH
06	29.01.13	Consultant Issue	ML	AH
07	31.01.13	DA ISSUE	ML	AH
08	09.04.13	DA ISSUE	ML	AH
09	31.05.13	DA ISSUE	ML	AH
10	04.11.13	DA ISSUE	ML	AH

ITEMS/STRUCTURES FOR DEMOLITION

Project
**Allengrove Crescent
North Ryde**

for
Arise Construction

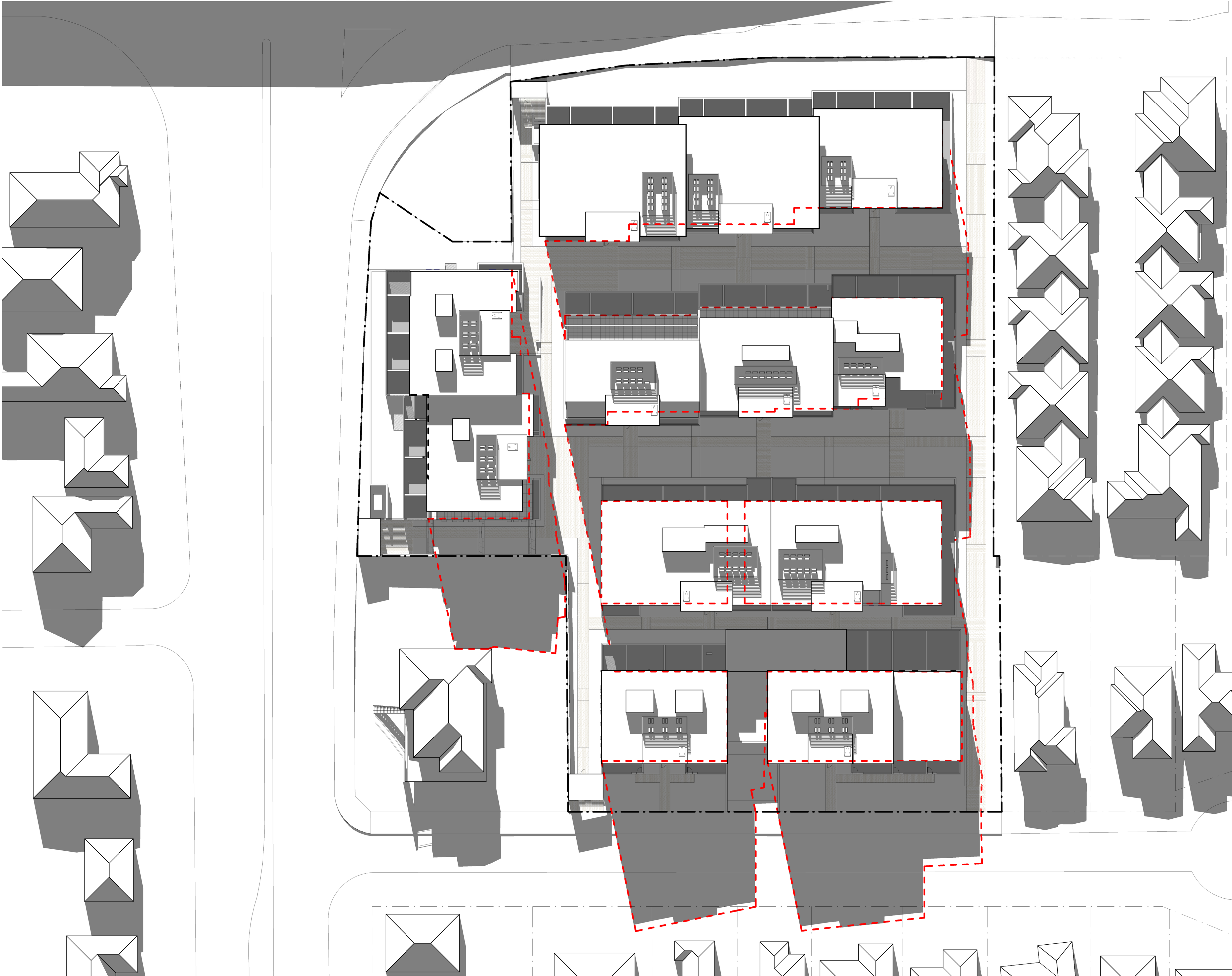
Drawing Name
**PLAN
Demolition**

Date	Scale	Sheet Size
04.11.2013	1:300	@ A1

Reg No.	Drawn	Chk.
	ML	AH

Job No.	Drawing No.	Revision
4907	DA-2501	/ 10

SJB Architects
Level 2
490 Crown Street
Surry Hills NSW
2010 Australia
T 61 2 9380 9911
F 61 2 9380 9922
www.sjb.com.au



In accepting and utilizing this document the recipient agrees that SJB Architecture (NSW) Pty. Ltd. ACN 091 094 724 T/A SJB Architects retain all common law, statutory law and other rights including copyright and intellectual property rights. The recipient agrees not to use this document for any purpose other than its intended use, to waive all claims against SJB Architects resulting from unauthorised changes, or to reuse the document on other projects without the prior written consent of SJB Architects. Under no circumstances shall transfer of the document be deemed a sale. SJB Architects makes no warranties of fitness for any purpose.

The Builder/Contractor shall verify job dimensions prior to any work commencing. Figure dimensions shall take precedence over scaled work.

Nominated Architects Adam Haddow 7188 John Pradel 7004

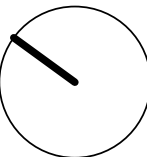
FOR APPROVAL

Rev.	Date	Revision	By	CHK.
1	09.01.2013	Consultant Issue		
2	11.01.2013	Consultant Issue		
3	14.01.2013	Consultant Issue		
4	18.01.2013	Consultant Issue		
5	24.01.2013	Consultant Issue		
6	29.01.2013	Consultant Issue		
7	31.01.2013	DA Issue		
8	03.04.2013	DA Issue		
9	31.05.2013	DA Issue		
10	04.11.2013	DA Issue		

PROPOSED SHADOWS
APPROVED ENVELOPE SHADOWS

Project
Allengrove
1-9 Allengrove
Crescent,
North Ryde
ARISE Construction

Drawing Name
Shadow Diagrams -
June 9am



Date
04.11.2013

Scale
1 : 300

Sheet Size
@ A1

Rep No.
ML

Drawn
JP

Job No.
4907

Drawing No.
DA-3001

Revision
10

In accepting and utilising this document the recipient agrees that SJB Architecture (NSW) Pty. Ltd. ACN 081 094 724 T/A SJB Architects retain all common law, statutory law and other rights including copyright and intellectual property rights. The recipient agrees not to use this document for any purpose other than its intended use, to waive all claims against SJB Architects resulting from unauthorised changes, or to reuse the document on other projects without the prior written consent of SJB Architects. Under no circumstances shall transfer of the document be deemed a sale. SJB Architects makes no warranties of fitness for any purpose.

The Builder/Contractor shall verify job dimensions prior to any work commencing. Figure dimensions shall take precedence over scaled work.

Nominated Architects Adam Haddow 7188 John Pradell 7004

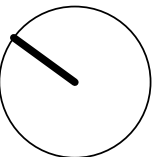
FOR APPROVAL

Rev.	Date	Revision	By	CHK.
1	09.01.2013	Consultant Issue		
2	11.01.2013	Consultant Issue		
3	14.01.2013	Consultant Issue		
4	18.01.2013	Consultant Issue		
5	24.01.2013	Consultant Issue		
6	29.01.2013	Consultant Issue		
7	31.01.2013	DA Issue		
8	03.04.2013	DA Issue		
9	31.05.2013	DA Issue		
10	04.11.2013	DA Issue		

PROPOSED SHADOWS
APPROVED ENVELOPE SHADOWS

Project
Allengrove
1-9 Allengrove
Crescent,
North Ryde
ARISE Construction

Drawing Name
Shadow Diagrams -
June 12pm



Date 04.11.2013 Scale 1 : 300 Sheet Size @ A1

Rep No. Drawn ML CHK. JP

Job No. 4907 Drawing No. DA-3002 Revision 10

In accepting and utilising this document the recipient agrees that SJB Architecture (NSW) Pty. Ltd. ACN 081 094 724 T/A SJB Architects retain all common law, statutory law and other rights including copyright and intellectual property rights. The recipient agrees not to use this document for any purpose other than its intended use, to waive all claims against SJB Architects resulting from unauthorised changes, or to reuse the document on other projects without the prior written consent of SJB Architects. Under no circumstances shall transfer of the document be deemed a sale. SJB Architects makes no warranties of fitness for any purpose.

The Builder/Contractor shall verify job dimensions prior to any work commencing. Figure dimensions shall take precedence over scaled work.

Nominated Architects Adam Haddow 7188 John Pradell 7004

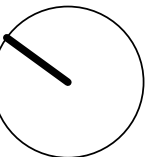
FOR APPROVAL

Rev.	Date	Revision	By	CHK.
1	09.01.2013	Consultant Issue		
2	11.01.2013	Consultant Issue		
3	14.01.2013	Consultant Issue		
4	18.01.2013	Consultant Issue		
5	24.01.2013	Consultant Issue		
6	29.01.2013	Consultant Issue		
7	31.01.2013	DA Issue		
8	03.04.2013	DA Issue		
9	31.05.2013	DA Issue		
10	04.11.2013	DA Issue		

PROPOSED SHADOWS
APPROVED ENVELOPE SHADOWS

Project
Allengrove
1-9 Allengrove
Crescent,
North Ryde
ARISE Construction

Drawing Name
Shadow Diagrams -
June 3pm



Date
04.11.2013

Scale
1 : 300

Sheet Size
@ A1

Rep. No.
ML

Drawn
JP

Job No.
4907

Drawing No.
DA-3003

Revision
10

The Builder/Contractor shall verify job dimensions prior to any work commencing. Use figured dimensions only. Do not scale drawings.

FOR APPROVAL

Rev.	Date	Revision	By	Chk.
00	19.12.12	Preliminary Issue	ML	AH
01	09.01.13	Consultant Issue	ML	AH
02	11.01.13	Consultant Issue	ML	AH
03	14.01.13	Consultant Issue	ML	AH
04	18.01.13	Consultant Issue	ML	AH
05	24.01.13	Consultant Issue	ML	AH
06	29.01.13	Consultant Issue	ML	AH
07	31.01.13	DA ISSUE	ML	AH
08	09.04.13	DA ISSUE	ML	AH
09	31.05.13	DA ISSUE	ML	AH
10	04.11.13	DA ISSUE	ML	AH

[illegible]

The floor plan of the second floor shows a large open-plan living and dining area. On the left, there is a kitchen with a sink, stove, and refrigerator. Adjacent to it is a breakfast nook with a round table and four chairs. The central area features a large sofa, a coffee table, and a fireplace. To the right, there is a dining area with a large table and chairs. A staircase leads up to the third floor. The plan also shows a bathroom, a bedroom, and a storage area.

This architectural floor plan shows a house with a large central hall. At the top left is a kitchen with a sink, stove, and refrigerator. Below it is a dining area with a round table and six chairs. To the right of the dining area is a large circular room, possibly a living area, with a fireplace and a large window. Below the dining area is a living room with a sofa and a coffee table. To the right of the living room is a bathroom with a bathtub, toilet, and sink. Below the living room is a bedroom with a bed and a dresser. To the right of the bedroom is another bedroom with a bed and a dresser. At the bottom left is a small room, possibly a bathroom or a closet. The plan also shows a large entrance area at the bottom with a coat closet and a small table.

The floor plan shows a large central hall with a circular table and chairs. To the left is a kitchen area with a sink, stove, and refrigerator. To the right is a bathroom with a toilet and sink. The plan also includes a staircase and a small storage area.

This architectural floor plan shows a house with a large circular dining area at the top, a rectangular dining table to its left, and a kitchen area below the dining table. The kitchen includes a sink, stove, and refrigerator. There are several bedrooms, each with a bed and a closet. The plan also shows a bathroom, a hallway, and a large living area at the bottom. The overall layout is rectangular with a large circular feature in the upper left.

This architectural floor plan shows a house with a large circular dining area at the top, a rectangular dining table in the middle, a kitchen with a sink and stove, a bathroom with a bathtub, and two bedrooms at the bottom. The plan includes various furniture pieces like chairs, tables, and a sofa, as well as architectural details like doors, windows, and a staircase.

for
Arise Construction

Reg No.	Drawn	Chk.
	ML	AH

Job No.	Drawing No.	Revision
4907	DA-901	/10

SJB Architects

Level 2
490 Crown Street
Surry Hills NSW
2010 Australia
T 61 2 9380 9911
F 61 2 9380 9922
www.sjb.com.au



The Builder/Contractor shall verify job dimensions prior to any work commencing. Use figured dimensions only. Do not scale drawings.

Rev.	Date	Revision	By	Chk.
00	19.12.12	Preliminary Issue	ML	AH
01	09.01.13	Consultant Issue	ML	AH
02	11.01.13	Consultant Issue	ML	AH
03	14.01.13	Consultant Issue	ML	AH
04	18.01.13	Consultant Issue	ML	AH
05	24.01.13	Consultant Issue	ML	AH
06	29.01.13	Consultant Issue	ML	AH
07	31.01.13	DA ISSUE	ML	AH
08	09.04.13	DA ISSUE	ML	AH
09	31.05.13	DA ISSUE	ML	AH
10	04.11.13	DA ISSUE	ML	AH

[illegible]

A detailed floor plan of a house. The layout includes a living room with a large sofa, a coffee table, and a fireplace. The dining room features a round table with four chairs. The kitchen is equipped with a sink, stove, and refrigerator. There are two bedrooms, each with a bed and a dresser. A central hallway connects the rooms, and a bathroom is located near the bedrooms. The plan also shows a front porch and a back yard.

This floor plan shows a large, symmetrical house with a central hall. The hall features a large circular area in the center, flanked by two rectangular areas. The left side of the house includes a large bedroom with a bed and a desk, a bathroom, and a kitchen area. The right side includes a large living area with a fireplace, a dining area with a table and chairs, and a kitchen area. The central hall also contains a large circular table and chairs, and a rectangular table with chairs. The house has a thick exterior wall on the left and a thick exterior wall on the right. The central hall is a large, open space that connects the various rooms.

A floor plan of a house. The layout includes a kitchen at the top with a sink, stove, and refrigerator. A living area is on the left with a sofa and a coffee table. A dining area is at the bottom with a table and chairs. A bathroom is located between the kitchen and the living area. A bedroom is on the right side. A central hallway connects the rooms. The plan shows doors, windows, and furniture placement.

A floor plan of a small office space. On the left, there is a reception desk with a curved front. Behind the desk is a private office containing a desk, a chair, and a filing cabinet. To the right of the reception desk is a meeting area with a round table and four chairs. Further right is a long, narrow reception counter with a grid pattern. The space is divided by a thick wall on the right side.

The floor plan shows a rectangular building layout. At the top is a large rectangular area, likely a hall or common room. Below this is a long, narrow corridor running horizontally. To the left of the corridor is a large rectangular area, possibly a kitchen or dining area, containing a large square table and several chairs. To the right of the corridor is a long, narrow area, possibly a storage room or a small office, containing a desk and a chair. At the bottom of the plan is a large rectangular area, likely a living room or a large office, containing a large square table and several chairs. The plan also shows several smaller rooms, including a bathroom with a toilet and a sink, and a kitchen with a stove and a sink.

for
Arise Construction

Job No.	Drawing No.	Revision
4907	DA-902	/10



The Builder/Contractor shall verify job dimensions prior to any work commencing. Use figured dimensions only. Do not scale drawings.

FOR APPROVAL

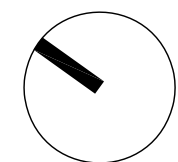
Rev.	Date	Revision	By	Chk.
00	19.12.12	Preliminary Issue	ML	AH
01	09.01.13	Consultant Issue	ML	AH
02	11.01.13	Consultant Issue	ML	AH
03	14.01.13	Consultant Issue	ML	AH
04	18.01.13	Consultant Issue	ML	AH
05	24.01.13	Consultant Issue	ML	AH
06	29.01.13	Consultant Issue	ML	AH
07	31.01.13	DAISSUE	ML	AH
08	09.04.13	DAISSUE	ML	AH
09	31.05.13	DAISSUE	ML	AH
10	04.11.13	DAISSUE	ML	AH

[illegible]

Allengrove Crescent
North Ryde

for
Arise Construction

DETAILS
Apartment Types
Sheet 01



Date	Scale	Sheet Size
04.11.2013	1:100	@ A1

Reg No.	Drawn	Chk.
	ML	AH

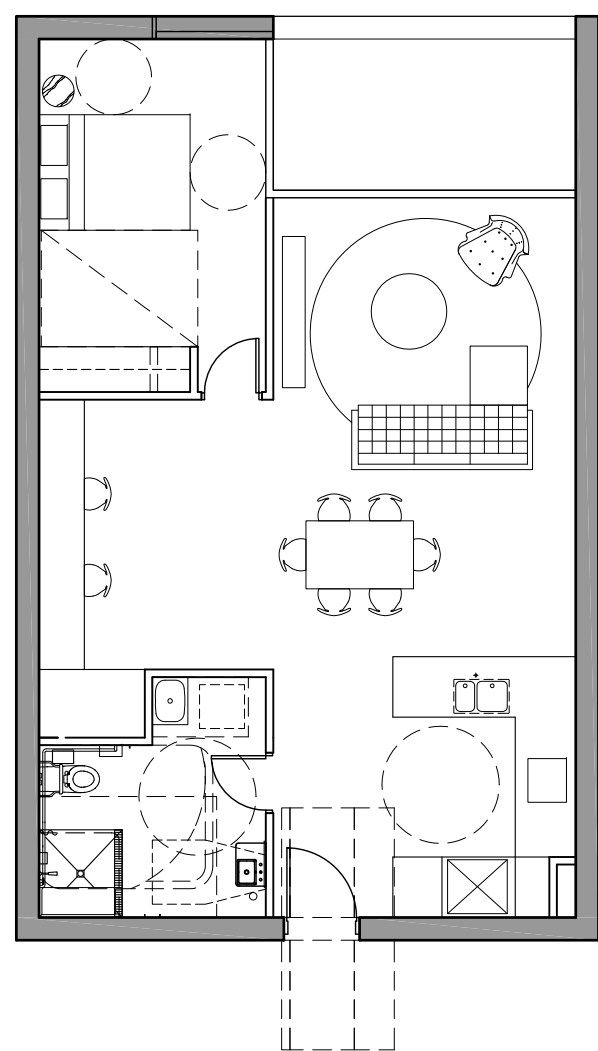
Job No.	Drawing No.	Revision
4907	DA-903	/10

SJB Architects

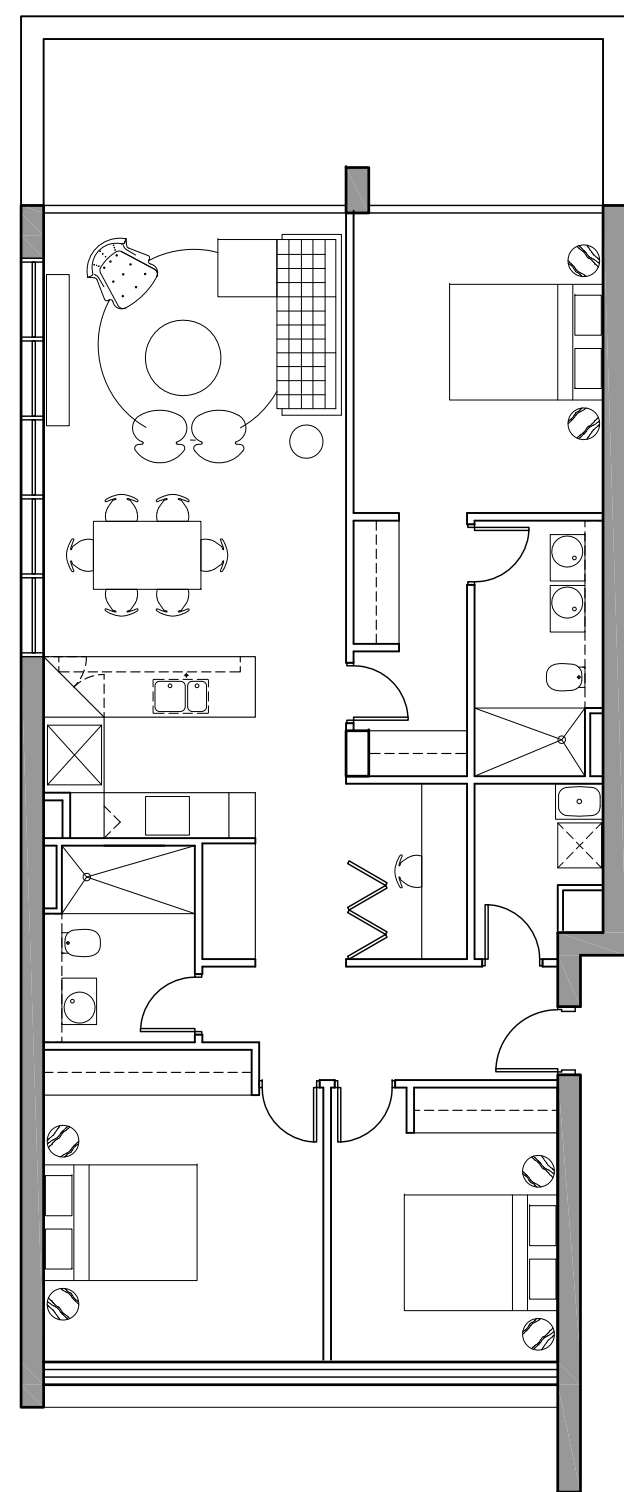
Level 2
490 Crown Street
Surry Hills NSW
2010 Australia
T 61 2 9380 9911
F 61 2 9380 9922
www.sjb.com.au

The logo for SJB Architects features the letters 'SJB' in a large, bold, black, sans-serif font. The letters are closely spaced and have a slightly irregular, hand-drawn quality. The 'S' and 'J' are connected, and the 'B' is also connected to the 'J'. The logo is positioned to the right of the contact information.

TYPE 17
Apartment Plan 1:100



TYPE 18 ADAPTABLE
Apartment Plan 1:100



TYPE 19
Apartment Plan 1:100

