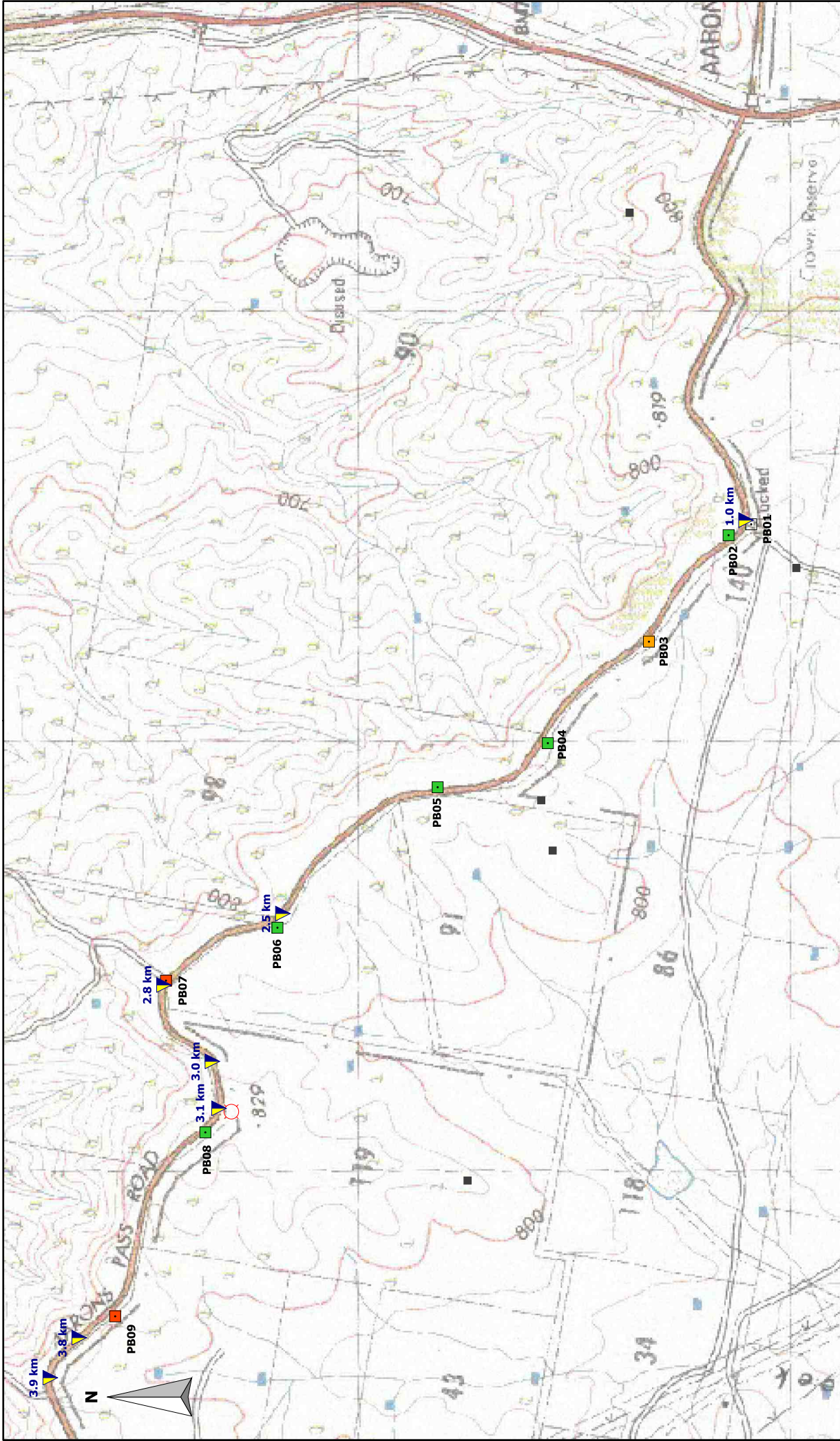


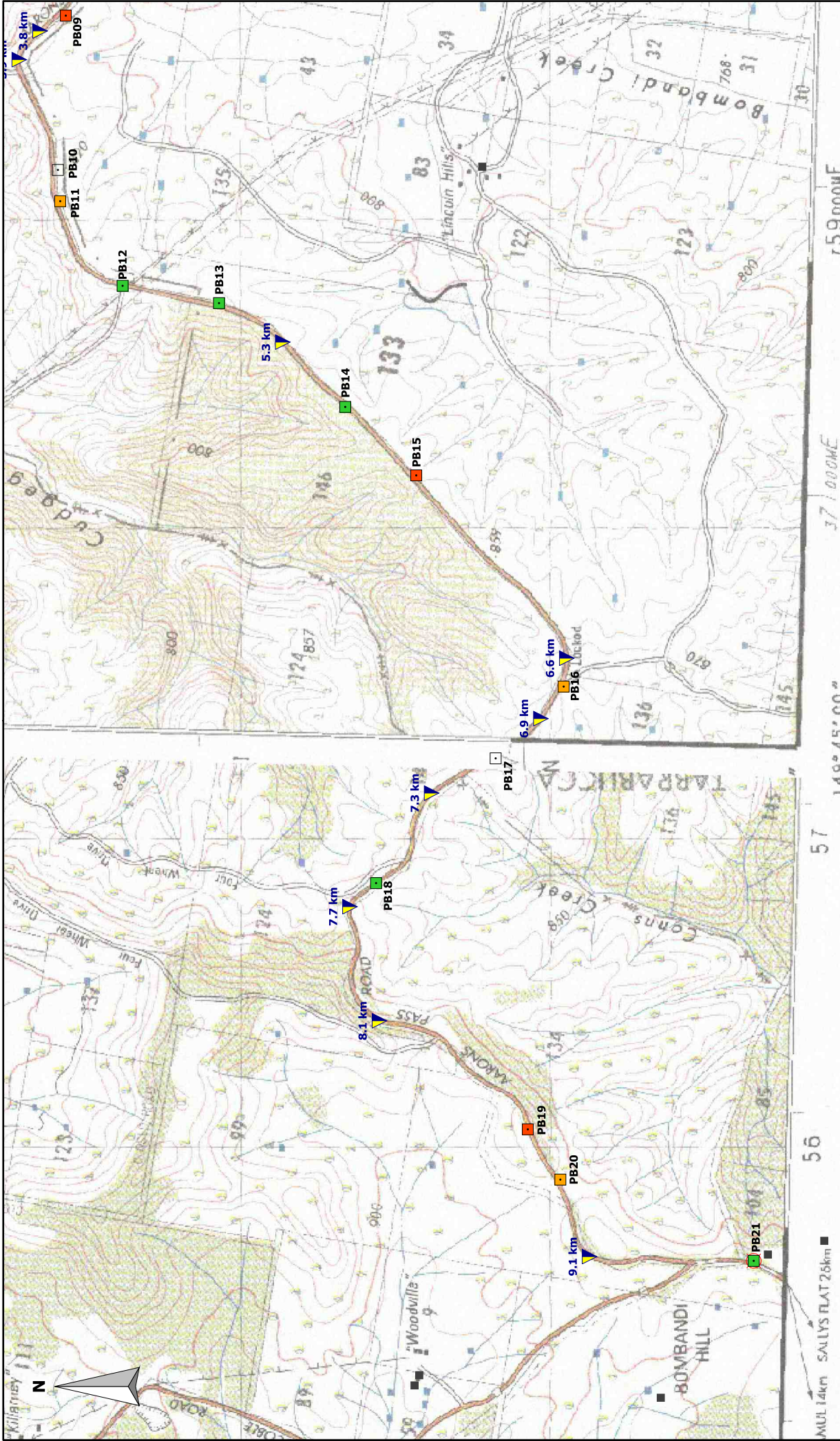
<b>LEGEND</b>  <b>Upgrade Works</b> Road works recommended Potential passing bay Recommend widen road to 6 m Gateway access to residence  <b>Buildings</b> Occupied Unoccupied Unknown  <b>Project Layout</b> Layout Option A - up to 106 Turbines Layout Option B - up to 77 Turbines Layout Option A - Internal Roads Layout Option B - Internal Roads	<b>COMPANY</b> <b>CRUDINE RIDGE WIND FARM PTY LTD</b>
	<b>TITLE</b> <b>FIGURE 1: AARONS PASS ROAD - ROAD UPGRADE AND PASSING BAY WORKS IDENTIFIED FOR OM/OS VEHICLES</b>
<b>DATE</b> 22 JUL 2013	<b>SCALE</b> 1:40000
<b>DRAWN BY</b> S ISHERWOOD	<b>CHECKED BY</b> W STONE
<b>SCALE BAR</b> 0  5 km	<b>DWG NO</b> CRU131
<b>VER</b> 2	<b>REV</b> A
<b>SIZE</b> A4	<b>JOB NO</b> 080401
<b>WIND PROJECT</b> 	<b>SHEET</b> 1 OF 1

Background Imagery derived from GEODATA Topo250K. All other data: WPCWP

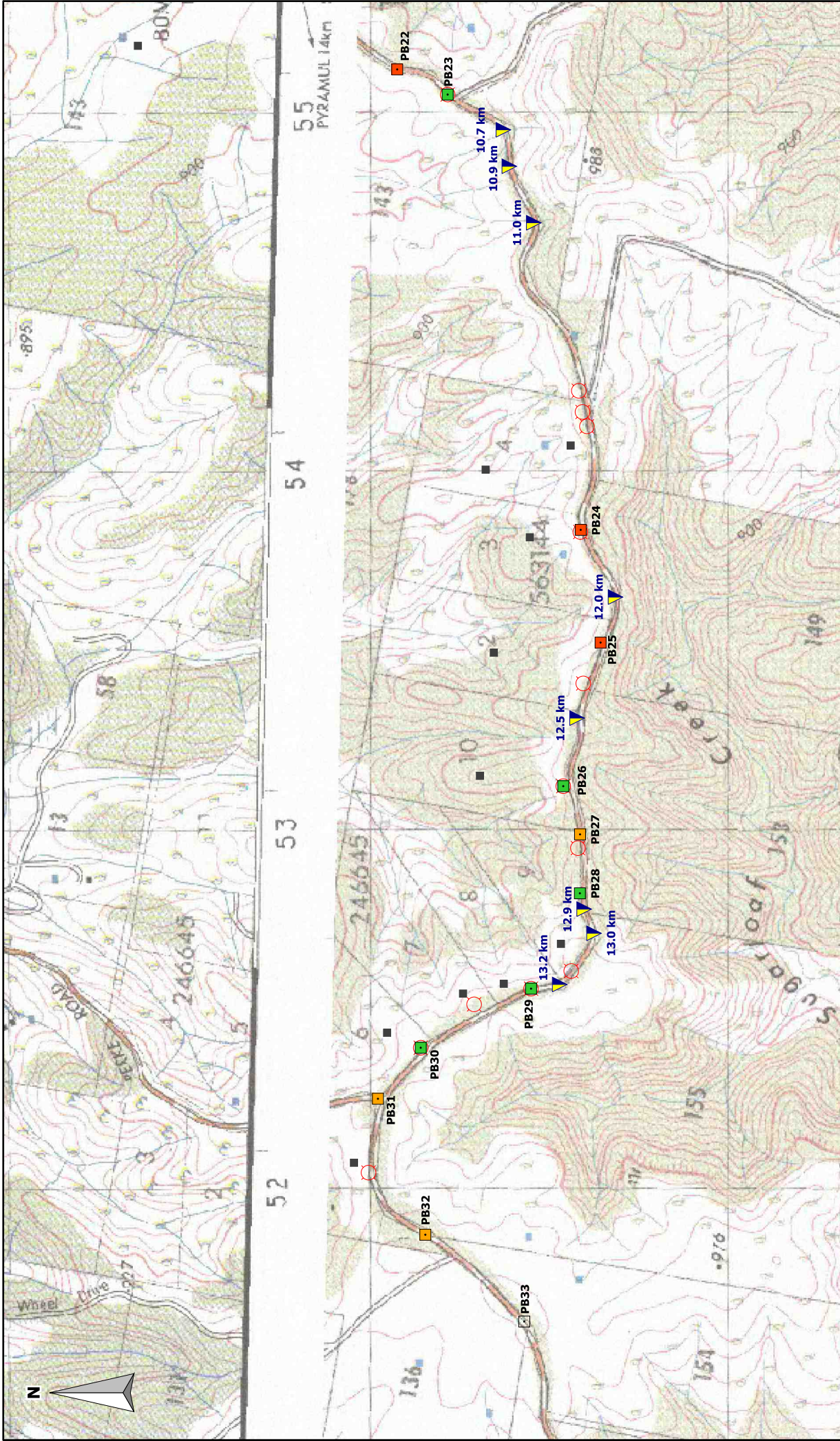


<b>LEGEND</b> <b>Proposed Road Works</b> ▼ Road works recommended ■ Building Gateway access to residence	<b>Potential Passing Bay Options</b> Grade 1: Very good Grade 2: Good Grade 3: Average Removed on detailed assessment	<b>COMPANY</b> <b>CRUDINE RIDGE WIND FARM PTY LTD</b>	
		<b>TITLE</b> <b>FIGURE 2: AARONS PASS ROAD 0 - 5 KM</b> <b>PROPOSED ROAD UPGRADES AND PASSING BAYS</b>	
<b>SCALE BAR</b> 0 1 km		<b>DATE</b> 22 JUL 2013	<b>SCALE</b> 1:12000
Background Imagery: derived from GEODATA Topo250K. All other data: WPCWP		<b>DRAWN BY</b> S ISHERWOOD	<b>CHECKED BY</b> E MOUNSEY
		<b>DWG NO</b> CRU132	<b>REV</b> A
		<b>REV</b> A	<b>JOB NO</b> 080401
		<b>VER</b> 3	<b>SIZE</b> A4
		<b>SHEET</b> 1 OF 1	

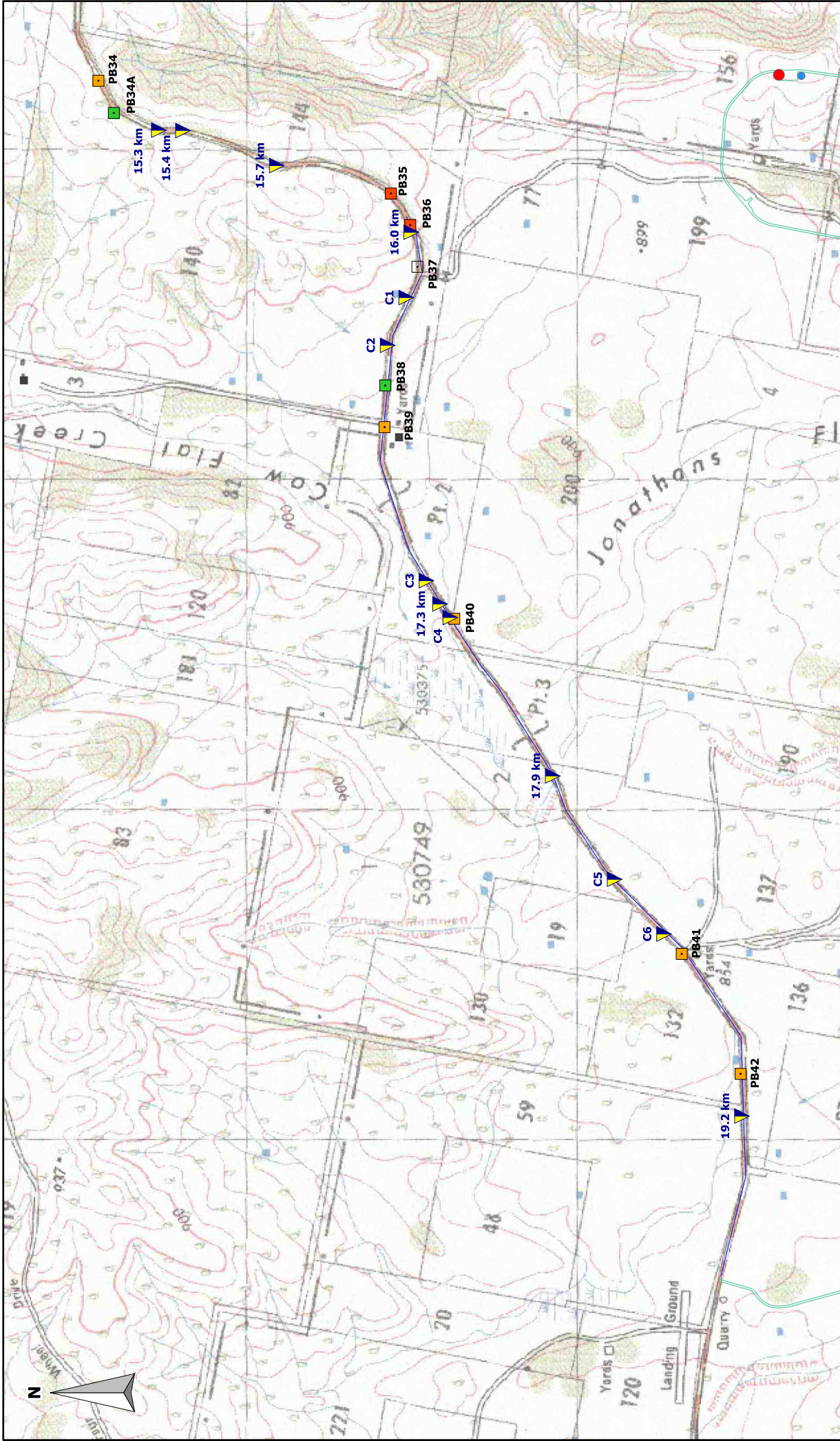




<b>LEGEND</b> <b>Proposed Road Works</b> ▼ Road works recommended ■ Building Gateway access to residence	<b>Potential Passing Bay Options</b> Grade 1: Very good Grade 2: Good Grade 3: Average Removed on detailed assessment	<b>COMPANY</b> <b>CRUDINE RIDGE WIND FARM PTY LTD</b>	
		<b>TITLE</b> <b>FIGURE 3: AARONS PASS ROAD 5 - 10 KM PROPOSED ROAD UPGRADES AND PASSING BAYS</b>	
<b>SCALE BAR</b> 0 1 km <small>Background Imagery derived from GEODATA Topo250K. All other data: WPCWP</small>		<b>DATE</b> 22 JUL 2013	<b>SCALE</b> 1:17000
<b>DRAWN BY</b> S ISHERWOOD		<b>CHECKED BY</b> E MOUNSEY	<b>DWG NO</b> CRU133
		<b>REV</b> A	<b>JOB NO</b> 080401
		<b>VER</b> 3	<b>SIZE</b> A4
		<b>WIND PROJECT</b>	



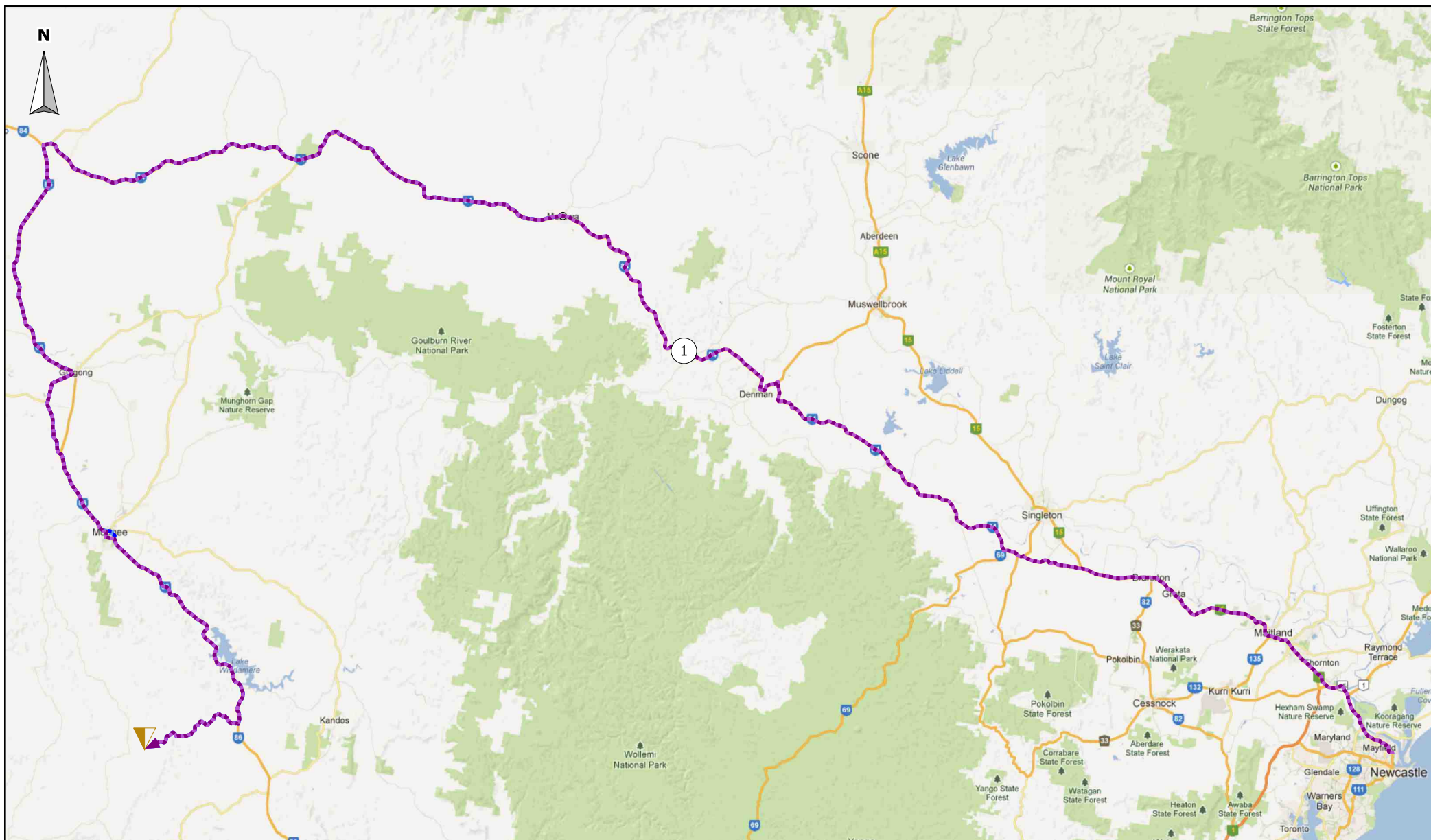
LEGEND	<b>Proposed Road Works</b>	<b>Potential Passing Bay Options</b>	<b>Building</b>
	<ul style="list-style-type: none"> <li>▼ Road works recommended</li> </ul>	<ul style="list-style-type: none"> <li>■ Grade 1: Very good</li> <li>■ Grade 2: Good</li> <li>■ Grade 3: Average</li> <li>□ Removed on detailed assessment</li> </ul>	<ul style="list-style-type: none"> <li>■ Building</li> <li>○ Gateway access to residence</li> </ul>
<p>Background Imagery derived from GEODATA Topo250K. All other data: WPCWP</p> <p>SCALE BAR 0 1 km</p>			
<p>COMPANY <b>CRUDINE RIDGE WIND FARM PTY LTD</b></p>			
<p>TITLE <b>FIGURE 4: AARONS PASS ROAD 10 - 15 KM</b></p> <p><b>PROPOSED ROAD UPGRADES AND PASSING BAYS</b></p>			
DATE	SCALE	DWG NO	REV
22 JUL 2013	1:15000	CRU134	A
DRAWN BY	CHECKED BY	SHEET	JOB NO
S ISHERWOOD	E MOUNSEY	1 OF 1	080401
		SIZE	A4
		VER	3
		CW/P	WIND PROJECT



LEGEND	<b>Proposed Road Works</b> Road works recommended Recommend widen road to 6 m	<b>Potential Passing Bay Options</b> Grade 1: Very good Grade 2: Good Grade 3: Average Removed on detailed assessment	Building Gateway access to residence
	Proposed Road Works Road works recommended Recommend widen road to 6 m	Potential Passing Bay Options Grade 1: Very good Grade 2: Good Grade 3: Average Removed on detailed assessment	Building Gateway access to residence
COMPANY: CRUDINE RIDGE WIND FARM PTY LTD TITLE: FIGURE 5: AARONS PASS ROAD 15 - 20 KM PROPOSED ROAD UPGRADES AND PASSING BAYS			
DATE: 22 JUL 2013 DRAWN BY: S ISHERWOOD		SCALE: 1:16000 CHECKED BY: E MOUNSEY	
SCALE BAR: 0 to 1 km		DWG NO: CRU135 REV: A SHEET: 1 OF 1 JOB NO: 080401 SIZE: A4	





Background Imagery derived from GEODATA Topo250K. All other data: WPCWP




**LEGEND**

**Over-Dimensional Vehicle Route Options**

-  Route Option 1
-  Route Option 2  
(see Figure 6.3 for Route Option 2)

**The Project**

-  Northern Site Access Point

Background imagery: Google Maps; All other data: Google Maps, WPCWP

**COMPANY**

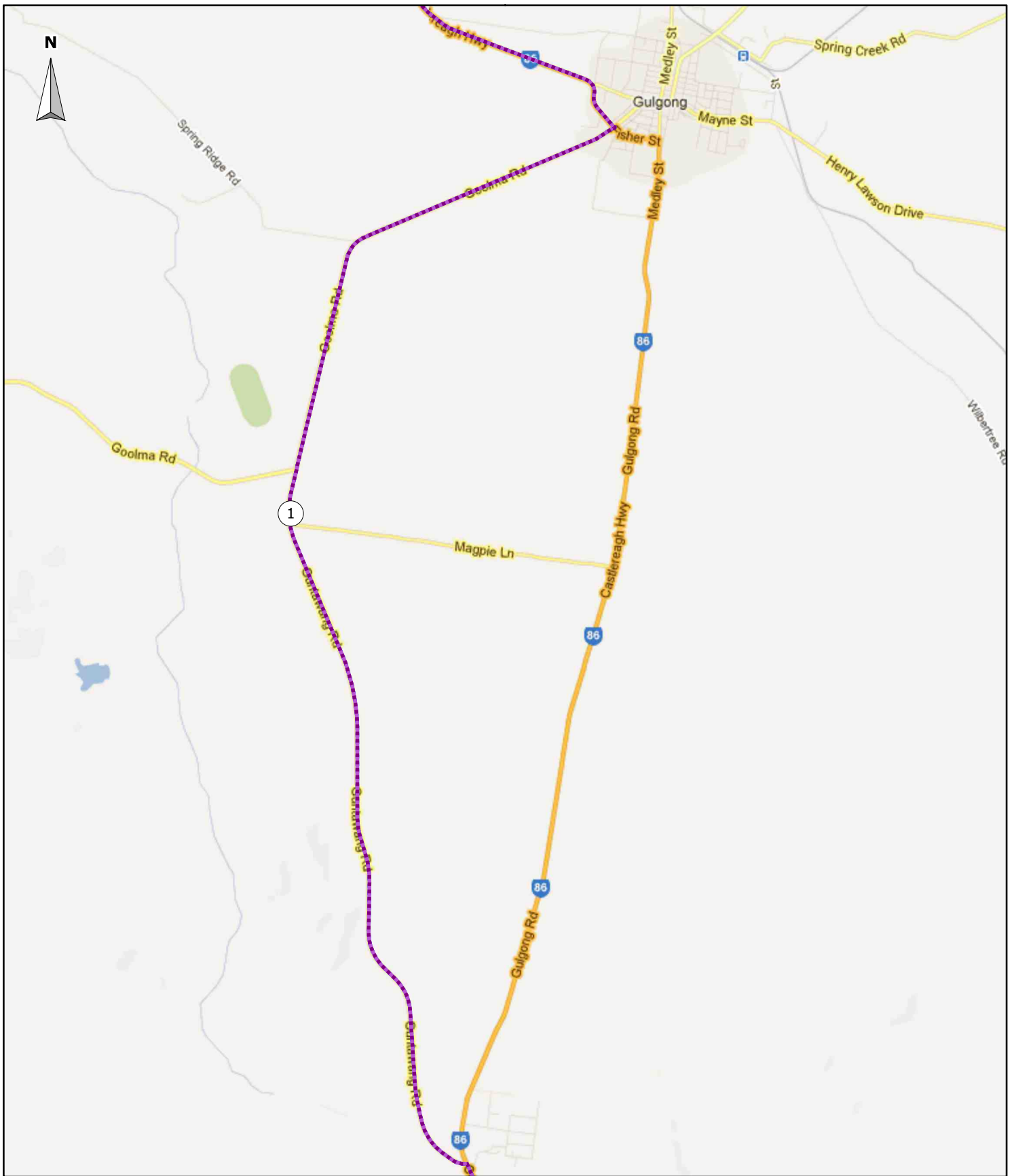
**CRUDINE RIDGE WIND FARM PTY LTD**

**TITLE**


**FIGURE 6.1: PROPOSED OVER-DIMENSIONAL VEHICLE ROUTE OPTIONS FOR PROJECT CONSTRUCTION**

DATE	09 NOV 2013	SCALE	1:820000	DWG NO	FIGURE 6.1	REV	A	VER	1
DRAWN BY	S ISHERWOOD	CHECKED BY	E MOUNSEY	SHEET	1 OF 1	JOB NO	080401	SIZE	A4





LEGEND

**Over-Dimensional Route Options**  
 Route Option 1

COMPANY

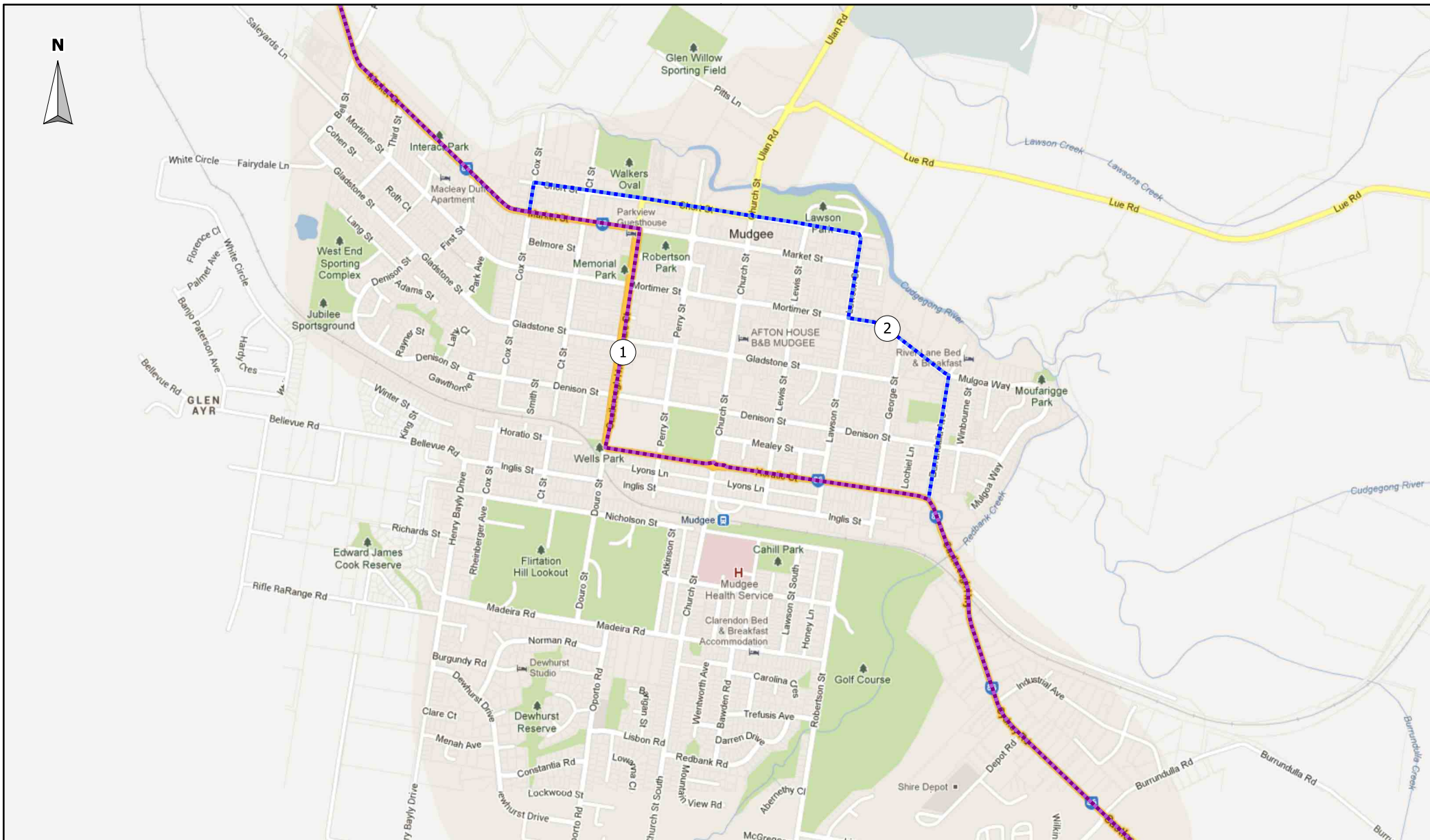
CRUDINE RIDGE WIND FARM PTY LTD

TITLE

FIGURE 6.2: PROPOSED OVER-DIMENSIONAL VEHICLE ROUTE OPTIONS, GULGONG



DATE 09 NOV 2013	SCALE 1:63000	DWG NO FIGURE 6.2	REV A	VER 1
DRAWN BY S ISHERWOOD	CHECKED BY E MOUNSEY	SHEET 1 OF 1	JOB NO 080401	SIZE A4



LEGEND

**Over-Dimensional Route Options**

- Route Option 1
- Route Option 2

COMPANY

**CRUDINE RIDGE WIND FARM PTY LTD**

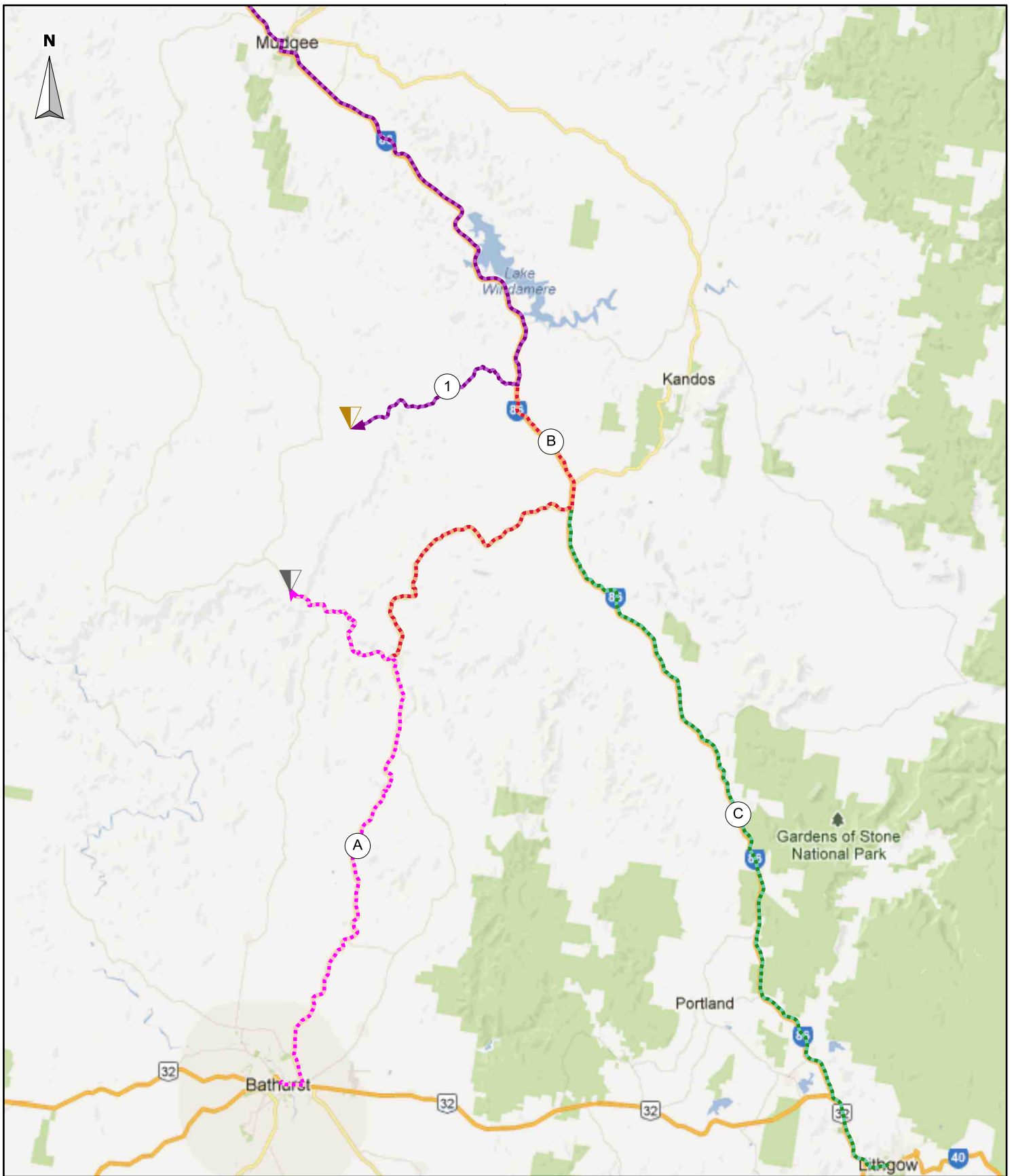


TITLE

**FIGURE 6.3: PROPOSED OVER-DIMENSIONAL VEHICLE ROUTE OPTIONS, MUDGEE**

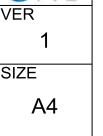
DATE	09 NOV 2013	SCALE	1:16500	DWG NO	FIGURE 6.3	REV	A	VER	1
DRAWN BY	S ISHERWOOD	CHECKED BY	E MOUNSEY	SHEET	1 OF 1	JOB NO	080401	SIZE	A4





LEGEND	
<b>Standard Heavy Vehicle Route Options</b>	
	Route A
	Route B
	Route C
	Route Option 1
<b>The Project</b>	
	Northern Site Access Point
	Southern Site Access Point

COMPANY				
CRUDINE RIDGE WIND FARM PTY LTD				
TITLE				
FIGURE 6.4: PROPOSED STANDARD HEAVY VEHICLE ROUTE OPTIONS FOR PROJECT CONSTRUCTION				
DATE	SCALE	DWG NO	REV	VER
09 NOV 2013	1:450000	FIGURE 6.4	A	1
DRAWN BY	CHECKED BY	SHEET	JOB NO	SIZE
S ISHERWOOD	E MOUNSEY	1 OF 1	080401	A4



Background imagery: Google Maps; All other data: Google Maps, WPCWP